



P1+ Simplified Mirco Projector



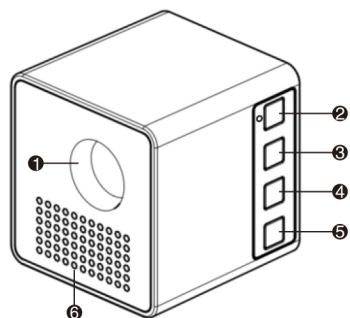
Wi-Fi Ready



Due to continuous improvement, actual product may differ from the manual. Manual is for reference only.



*Pls refer to actual product if any difference between color or appearance.



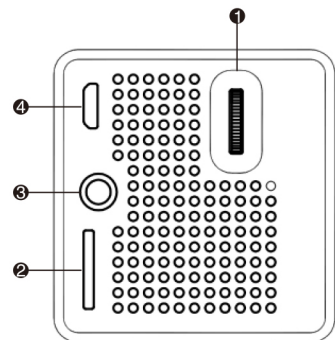
Product Details

1. Lens
2. (Power on /off)
3. (To right/To down)
4. (Okey)
5. (Exit/Esc)
6. Thermovent

1. Please read this manual carefully before using.
2. National standard power cable and power cord with grounding is suggested, so as to ensure stable power supply.
3. No peeking into the lens while projector is working.
4. No cloth, blanket or any other material that could stock ventilation holes should be placed around the projector while it is working.
5. No water-proof function for this projector, no such apparatus as vase or cup should be put around the projector.
6. Projector should be stocked and used at dry and clean condition.
7. Please turn off the projector and cut off the power supply, if it is not used for long time.
8. Please use factory original foam and other shockproof material while transporting.
9. If found projector defected, do not attempt to repair it by yourself. Please contact with your distributor or factory directly.



Remarks:
User Manual should be read carefully if you are using the projector. If any difference between user manual and actual projector. Please subject to the actual projector.



Interfaces

1. Focus Handle
2. TF card
3. Earphone
4. 5V 2A input
(Connect to USB devices through USB transferred cable.)

Note : Pls use standard 5V 2A adaptor,or it will impact projector stability.



Keyboard

- Power on/off
- To right or down to choose
- Confirm
- Exit/Esc

Power on /off

Power on : Use battery or 5V power supply, long press the button of power (for two seconds),when indicator flashing (for 3 seconds), projector is under standby status.

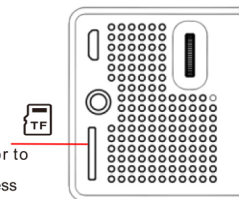
Power off : Long press the button of power (for 2 seconds),Projector is off.



Product Connection

Multimedia Channel (TF card)

- ▶ Preparation: Insert TF card to relevant position as right pic showed.
- Then press button " " on the projector to choose Multimedia icon as below pic to press " " enter into submenu.



*Main Interface



Specifications

Model	P1+	N. W.	93g
Image System	DLP	Lamp	RGB LED
Brightness	30 ansi lumens	Contrast Ratio	800:1
Resolution	640*360	Power Supply	5V-2A
Output	3.5mm earphone	Product Size	46*47*48MM
Lamp Life	20000 Hours	Aspect Ratio	4:3/16:9
Projection Dist.	0.3-4M	System	EZCast OS
PowerConsumption	10W(max)	MaxResolutionSupport	1080P
Pic Size	7-70(Inches)	Input	TF/USB (Connect to USB devices through USB transferred cable.)

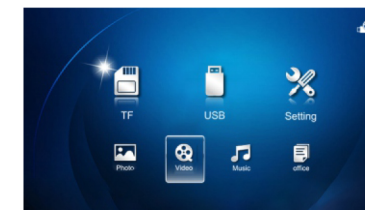
Format Support

Audio: MP3/WMA/OGG/AAC/WAV/ASF

Pic: JPEG/BMP/PNG

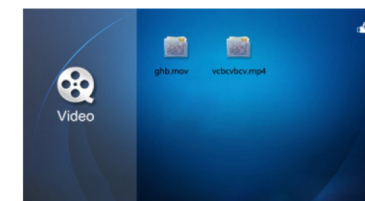
Video: AVI/DIVX/MKV/TS/DAT/VOB/MPG/MPEG/MP4/MOV/RM/RMVB/WMV/MPEG/H264/AVC/DIVX/XVID/VC-1/MPEG2/MPEG4/RV3/RV4/WMV3/AC3/DTS/PCM/AAC/AMR/ADPCM

Txt: Microsoft Office Documents/PDF/TXT



- ▶ Press " " on the projector to choose relevant icon and press " " to enter into submenu as left pic showed.

*Multimedia Boot Screen

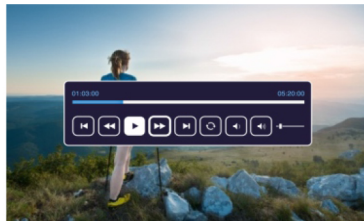


- ▶ Enter into the file you save in the submenu of video. Press button of " " to choose the one you need, press button of " " to display.

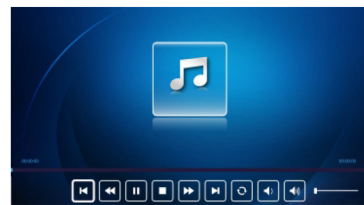
*Video Menu

Multimedia Screen

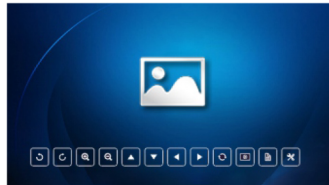
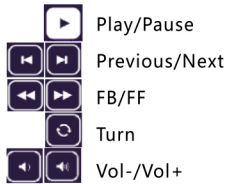
Press button of "OK" to enter into submenu of Multimedia(Video/Music/Photo/Txt).Press button of "OK" to choose relevant function icon. Press"OK" to display. Available setting items are: Video, Music, Photo and Txt. Details as below:



* Video Interface



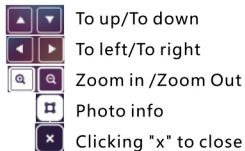
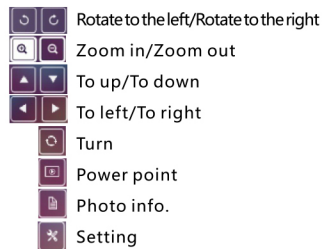
* Music Interface



* Photo Interface



* Text Interface



Wireless Connection

Android/iOS/Windows system connected with the projector



In main interface,press button "▶" to choose wifi(EZCast) function icon, press button of "OK" to enter into submenu as left pic shows.

Open your phone(android/iOS system)wifi,find the name as Uni-Link then put password to connect successfully when enter into Ezcast interface on the projector asleft pic shows.

► iOS device/Android device :

Open wifi on your mobile with android/iOS system to find the name begin with uni-Link(iOS connection as below left pic, android system connection as right pic.),then put password to connect successfully.



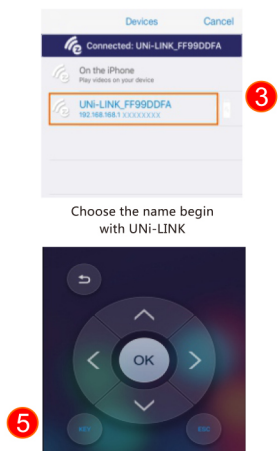
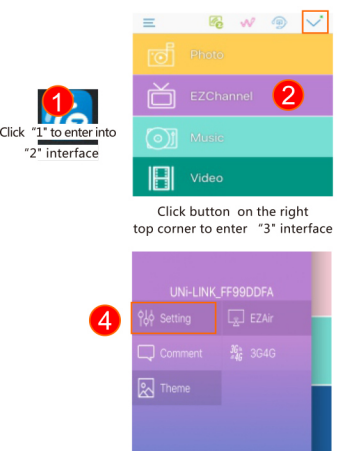
1 iOS



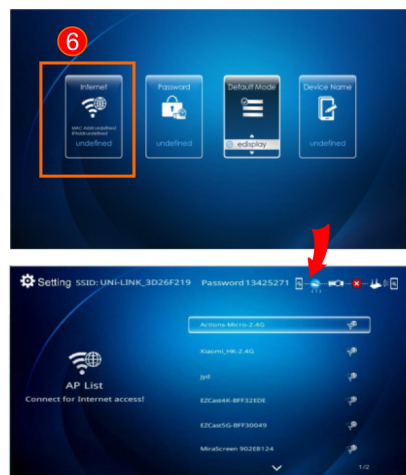
2 Android

Projection by connecting to router

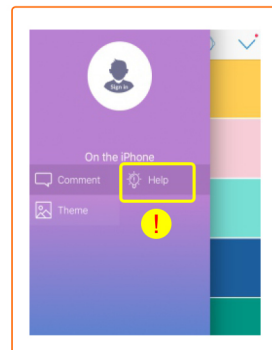
Use Ezcast software when in mobile,laptop or computer system end. Projection by connecting to router can enhance the internet signal.



Router connection interface in projector

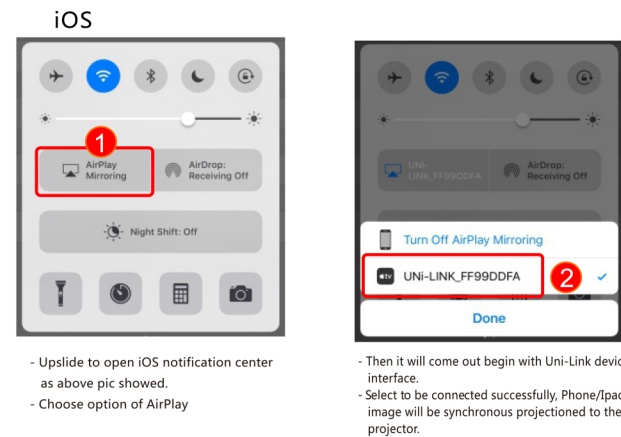


Note :
For function of "help"
just can be used in mobile
wifi connection as below pic.



Choose your router wifi name to connect successfully(Complete SYNC setting)

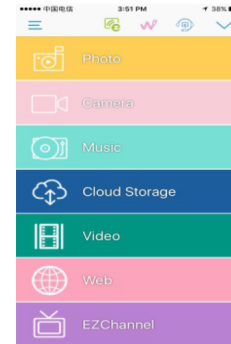
How to use wifi display



- Upside to open iOS notification center as above pic showed.
- Choose option of AirPlay
- Then it will come out begin with Uni-Link device interface.
- Select to be connected successfully. Phone/Ipad image will be synchronous projected to the projector.

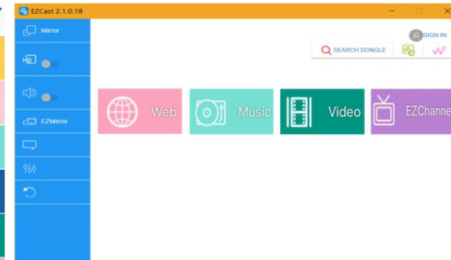
Note : With screen and push of iOS device do not need Ezcast APP.

Android

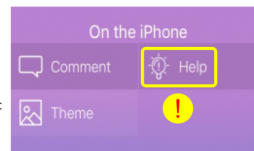


Android and PC end device need use Ezcast app to complete same screen and push function.

PC



Note :
For function of "help"
just can be used in mobile
wifi connection as right pic
showed.



Warning:

This device complies with Part 15 of the FCC Rules. Operation is subject to the following two conditions: (1) this device may not cause harmful interference, and (2) this device must accept any interference received, including interference that may cause undesired operation.

changes or modifications not expressly approved by the party responsible for compliance could void the user's authority to operate the equipment.

NOTE: This equipment has been tested and found to comply with the limits for a Class B digital device, pursuant to Part 15 of the FCC Rules. These limits are designed to provide reasonable protection against harmful interference in a residential installation. This equipment generates, uses and can radiate radio frequency energy and, if not installed and used in accordance with the instructions, may cause harmful interference to radio communications. However, there is no guarantee that interference will not occur in a particular installation. If this equipment does cause harmful interference to radio or television reception, which can be determined by turning the equipment off and on, the user is encouraged to try to correct the interference by one or more of the following measures:

- Reorient or relocate the receiving antenna.
- Increase the separation between the equipment and receiver.
- Connect the equipment into an outlet on a circuit different from that to which the receiver is connected.
- Consult the dealer or an experienced radio/TV technician for help.

NOTE: This device and its antenna(s) must not be co-located or operation in conjunction with any other antenna or transmitter

RF Exposure Statement

To maintain compliance with FCC's RF Exposure guidelines, This equipment should be installed and operated with minimum distance of 20cm the radiator your body. This device and its antenna(s) must not be co-located or operation in conjunction with any other antenna or transmitter