

# Bluetooth Receiver

## User Manual

**Please read this manual carefully before use.**

### Product Description

This Bluetooth receiver is especially designed to car stereos with 3.5mm aux in port, makes you answer calls and enjoy music with ease. The echo and noise reduction technology makes clear call conversation&music steaming wirelessly. Car charger power supply, 5V/3A dual USB port allowing you to high speed charge your smart-phone or pad while enjoying music.

### Packing list

1. Bluetooth receiver 1 pcs
2. Dual USB car charger 1pcs
3. User manual 1pcs

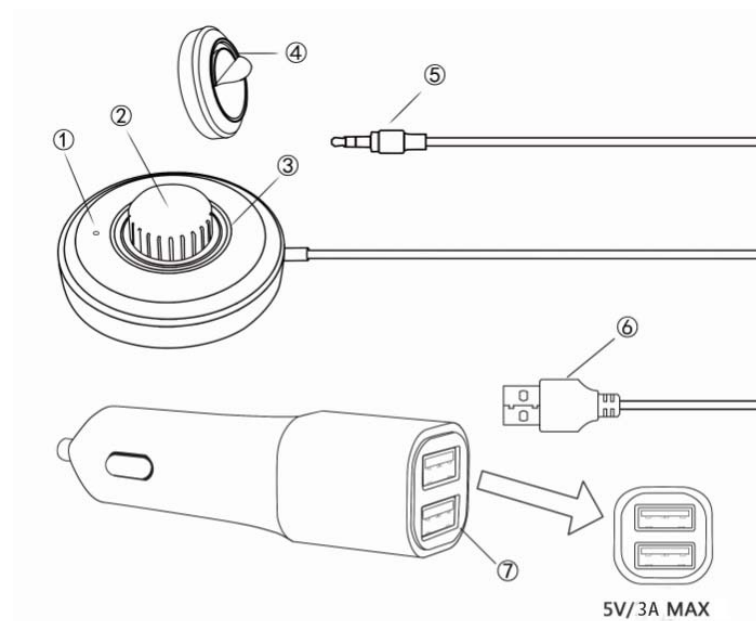
### Specifications

Bluetooth specification: V4.0+EDR

Bluetooth Operating distance: 30 feet

Car charger USB output: 5V/3A Total

### Product Diagram



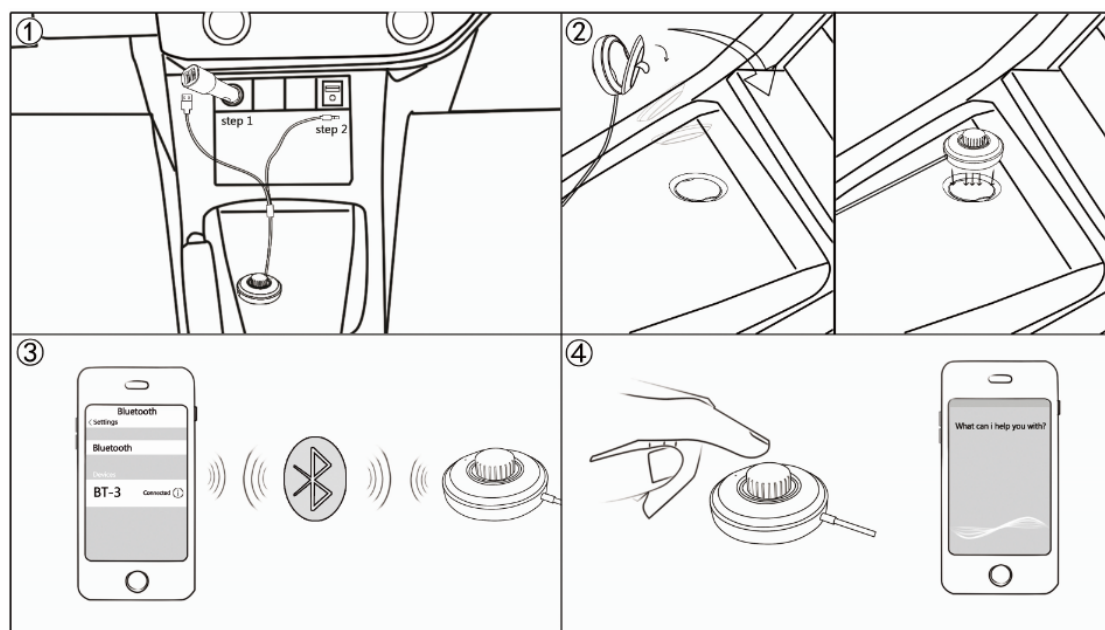
1. Microphone
2. Multi-function button
3. Bluetooth indicator light(blue)
4. Magnetic sticky Pad
5. 3.5 Audio plug
6. USB power connector
7. Dual USB port total 3A (Max) output car charger

## Operating Guide

**Step1:** Insert the car charger to the car cigarette lighter the power indicator lit up and the indicator flashes means it's ready to paired then insert the 3.5 audio plug into car aux in port.

**Step2:** Tear off the gum on the magnet and paste it on car's place which you want, put the Bluetooth receiver on the magnet.

**Step3:** Enable Bluetooth on your smart-phone in the settings ,search "BT-3"and tap on it to start pairing, when successfully paired, the Bluetooth indicator will illuminate blue.



## Play music

- 1.After your smart-phone is paired with the Bluetooth receiver, play your music on your smart-phone.
- 2.You can adjust the volume on your smart-phone.
- 3.Press the Multi-function Button to pause or resume the audio.
- 4.Previous song: turn the Multi-function Button to left.
- 5.Next song: turn the Multi-function Button to right.

## Answer/End a call

- 1.When you make a phone call or answer an incoming one, the Bluetooth receiver will automatically pause the audio.
- 2.Press the Multi-function Button to answer incoming calls, press this button once

again to end the call; your audio will be automatically resumed.

### **Redial the last number**

1. Double press the Multi-function button.

### **Rejecting a call**

1. Long press the Multi-function button reject the incoming call.

### **Enable Siri**

For a better IOS user experience, add the Siri function to this Bluetooth receiver, activate the voice software by long press the Multi-function Button.

### **Remark**

1. It will connect to the last paired device automatically when turned on next time (Turn on the Bluetooth of your smart device first).
2. For the best audio quality, please turn the volume of your smart device into the max level.

### **Troubleshooting**

Once the pairing process is completed, the connection can break for these reasons:

Connection has not been made within a specific time and the device is in sleep mode or powered off. Turn on/off Bluetooth receiver to re-connect. Please try the following:

1. Restart the Bluetooth receiver.
2. Restart and repeat pairing process for both devices.

## **FCC Statement**

This device complies with Part 15 of the FCC rules. Operation is subject to the following two conditions: 1) this device may not cause harmful interference, and 2) this device must accept any interference received, including interference that may cause undesired operation.

Note: This equipment has been tested and found to comply with the limits for a Class B digital device, pursuant to part 15 of the FCC Rules. These limits are designed to provide reasonable protection against harmful interference in a residential installation. This equipment generates uses and can radiate radio frequency energy and, if not installed and used in accordance with the instructions, may cause harmful interference to radio communications. However, there is no guarantee that interference will not occur in particular installation. If this equipment does cause harmful interference to radio or television reception, which can be determined by turning the equipment off and on, the user is encouraged to try to correct the interference by one or more of the following measures:

- Reorient or relocate the receiving antenna.
- Increase the separation between the equipment and receiver.
- Connect the equipment into an outlet on a circuit different from that to which the receiver is connected.
- Consult the dealer or an experienced radio/TV technician for help.

Changes or modifications not expressly approved by the party responsible for compliance could void the user's authority to operate the equipment.

This device is measured RF output power is less than the SAR exclusion threshold value for human head and body. Therefore, SAR test is not necessary.