

onn.

USER GUIDE 23 Mile Walkie Talkie 3 Pack



For product assistance & missing or replacement parts:
WE CAN HELP!
1-888-516-2630
7 DAYS/WEEK 7:00am-9:00pm CST
Find more at Walmart.com

1001927_EN_09/20/2024

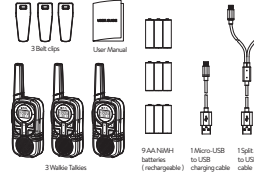
Content & Information

Content & Information	2	Advanced Features	7-8
Features	2	Setting Interference Eliminator Code	7
What's in the Box?	2-4	Call Tone	8
Safety Precautions	4-5	VCOX (Voice Operated Transmission)	8
Getting Started	6	2CH Dual Watch (Dual Channel Monitor)	8
Specifications	8-10	Weather Options	10
Basic Operations	7	Cleaning & Care	10
Adjusting Volume	7	Warranty	11
Changing Channels	7	Specifications	11
Making a Call	7	Troubleshooting / Frequently Asked Questions (FAQ)	11-12

- FEATURES**
- Built-in LED light
 - 22 channels
 - Weather channels
 - Works with AA rechargeable NiMH batteries (included) or standard alkaline batteries
 - Mountain to Valley - Up to 23 miles
 - Open Water - Up to 12 miles
 - Neighborhood - Up to 2 miles

Overview

What's in the Box?



General Frequency Channel
While in Standby mode or when selecting a channel, it shows the current channel (1-22).

Volume Numbers
Adjusting the volume shows the current level (0L - 7L).

VCOX Sensitivity Numbers
When the call tone is adjusted, the "CA" appears.

VCOX
Adjusting the VCOX controls the current level, which ranges from 0 to 3.

2CH Channel Numbers
When adjusting the 2CH, it shows the current channel (1 - 22 or "OFF").

Weather Icon
The indicator that shows when the radio is in Weather Band mode.

VOX Icon
Indicates when VOX mode is active.

2CH Icon
Indicates when 2ch mode is active.

Mute Icon
Indicates the volume of the radio is mute.

DCS/CTCSS Privacy Code Numbers
Change from 0-121.

Time Numbers
Adjusting the call tone shows the current level (0 - 10).

2CH Dual Watch
When the 2CH is adjusted, the "CH" appears.

Battery meter
Shows the current battery level.

Scan Icon
Indicates when SCAN mode is active.

Key Lock Icon
Indicates KEY LOCK mode is on.

Receive Icon
Indicates that the radio is receiving a transmission.

Transmit Icon
Indicates that the radio is transmitting a signal.

Weather Band mode
When the radio is in Weather Band mode, it shows the current channel (1 - 22 or "OFF").

VOX mode
When the radio is in VOX mode, it shows the current level (0 - 10).

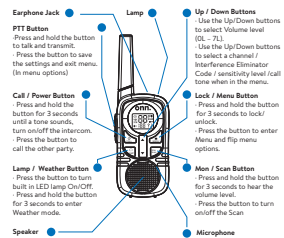
2CH mode
When the radio is in 2CH mode, it shows the current channel (1 - 22 or "OFF").

Mute mode
When the radio is in Mute mode, it shows the current level (0 - 10).

DCS/CTCSS Privacy Code
When the radio is in DCS/CTCSS Privacy Code mode, it shows the current level (0 - 121).

Time mode
When the radio is in Time mode, it shows the current level (0 - 10).

2CH Dual Watch mode
When the radio is in 2CH Dual Watch mode, it shows the current channel (1 - 22 or "OFF").



Safety Precautions

- Follow battery installation instructions carefully to avoid overheating.
 - Do not use in prohibited areas.
 - Keep the device dry and clean.
 - Avoid extreme temperatures.
- RF Exposure and Product Safety Instructions for Portable Two-Way Radios in General Populated and Uncontrolled Environments**
- Compliance with RF Exposure Standards
- Your Two-Way radio complies with the following RF energy exposure standards and guidelines:
- United States Federal Communications Commission (FCC) of Federal Regulations; 47 CFR et seq. & FCC.
 - Institute Electrical and Electronic Engineers (IEEE) C95.1.
- Transmit and Receive Precautions**
- To control your exposure and ensure compliance with general population/

4

uncontrolled environment exposure limits, adhere to following procedure:

- Transmit no more than 50% of time.
- To transmit (talk), press and hold the PTT button. To receive (call), release PTT button.
- Hold radio in a vertical position with microphone (and antenna) at least one inch away from your mouth. Keeping radio at a proper distance is important to ensure compliance.

NOTE

RF exposure decreases with increasing distance from antenna.

Two-Way Operation

- Use only approved supplied or replacement antennas and audio accessories.

NOTE

All controls, adjustments, and switches are specified in the manual or follow up instructions provided by the manufacturer, which can be operated or adjusted without violating FCC rules.

WARNING

Changes or modification to this unit not expressly approved by party responsible for compliance could void user's authority to operate equipment.

FCC SAR Statement

This equipment complies with FCC radiation exposure limits set forth for an uncontrolled environment. End user must follow specific operating instructions for satisfying RF exposure compliance. This transmitter must not be co-located or operated in conjunction with any other antenna or transmitter. Portable device is designed to meet requirements for exposure to radio waves established by Federal Communications Commission (FCC). These requirements set a SAR limit of 1.6 W/kg averaged over one gram of tissue. Highest SAR value reported under this standard during product certification for use when properly worn at a maximum distance of 0 mm from the body, in line of face with minimum distance 20mm.

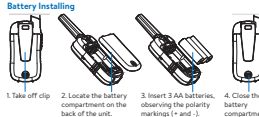
WARNING

- Do not use charger or conductive tools to remove batteries.
- Do not mix old and new batteries and do not mix alkaline, standard (carbon-zinc) or rechargeable (Ni-cad, Ni-mh, etc.) batteries.



5

Getting Started



Note: The device is compatible with rechargeable NiMH batteries.

Low Battery Level

When battery low status, radio will sound (Low Battery Alert) every 10 minutes or after releasing PTT button.

CAUTION
Only charge NiMH batteries.

Charging



NOTE

- It is recommended to power OFF your radio while charging.
- When moving between hot and cold temperatures, do not charge NiMH batteries until battery temperature acclimates (usually about 20 minutes).
- For optimal battery life, remove radio from charger within 16 hours. Do not store radio while connected to charger.

Turning the Device On/Off

- To turn on: Press and hold the Power button for 3 seconds.
- To turn off: Press and hold the Power button for 3 seconds.

Note: FCC ID Label (in battery compartment) is could be easily found by removing battery cover.

6

Basic Operations

Adjusting Volume

- Press the Up/Down buttons to adjust the volume.
- Press the PTT button to confirm.
- Volume ranges from 0 (Mute) to 7 (Loudest).

Changing Channels

- Press the PTT button to confirm.
- Use the Up/Down buttons to select a channel (1-22).

Making a Call

- Press and hold the PTT button to talk.
- Release the PTT button to listen.

Note: Do not hold radios less than 5 feet apart.
Note: Do not cover microphone while talking.

Push-to-Talk Timeout Timer
To prevent accidental transmissions and save battery life, radio will stop transmitting if you press PTT button for 60 seconds continuously.

Advanced Features

Setting DCS/CTCSS Privacy Code

DCS/CTCSS Privacy Code

- Press the PTT button to confirm.
- Use the Up/Down buttons to select a code (0-121).

Note: Disables the code, allowing all signals on the channel.

7

Call Tones

Call Tones

- Press the PTT button to confirm.
- Use the Up/Down buttons to select a tone (1-10).

VOX (Voice-Operated Transmission)

- Press the PTT button to confirm.
- Use the Up/Down buttons to select sensitivity (0-3).

0: OFF
1: Low (noisy environments)
2: Medium (most environments)
3: High (quiet environments)

2CH Dual Watch (Dual Channel Monitor)

- Press the PTT button to confirm.
- Use the Up/Down buttons to select a channel (1-22) or "OFF" to turn off.

Specifications

Automatic Power Save
When the radio is in standby for 5 seconds (when there is no receiving transmission), the radio will switch to power-saving mode. It can receive and transmit in this mode.

Roger Tone
In the power-off state, press and hold the (Power & Up) button at the same time to turn on/off the Roger Tone.

Scanning Channels
Use SCAN mode to search all channels for transmissions or to find unused channels to use. To Start Scanning:
1. Press Scan button, SCAN icon will appear and LCD will scroll through Channel and DCS/CTCSS Privacy code combinations.

8

Warranty

1 YEAR LIMITED WARRANTY
CONSUMER PROTECTION
Warranty Period lasts for 1 year (365 days) from date you purchased product. Your purchase date is printed on receipt you received with product. This limited warranty applies only to hardware components of Device that are not subject to accident, misuse, neglect, fire or damage from other external causes, alteration, repair, or commercial use.

Specifications

Channels:	Battery:	Range:
22	NiMH batteries	Up to 23 miles (ideal conditions), about 2 miles in urban areas
Power Source:	Interference Eliminator Codes:	Speaker:
3 AA batteries	121 Privacy Code/88 DCS codes / 88 DCS codes	12W
Model # W09107		
The following table lists the channels and frequencies that are available in the US.		
Channel	Frequency (MHz)	Frequency (MHz)
1	462.0125	462.0125
2	462.0375	462.0375
3	462.0625	462.0625
4	462.0875	462.0875
5	462.1125	462.1125
6	462.1375	462.1375
7	462.1625	462.1625
8	462.1875	462.1875
9	462.2125	462.2125
10	462.2375	462.2375
11	462.2625	462.2625
12	462.2875	462.2875
13	462.3125	462.3125
14	462.3375	462.3375
15	462.3625	462.3625
16	462.3875	462.3875
17	462.4125	462.4125
18	462.4375	462.4375
19	462.4625	462.4625
20	462.4875	462.4875
21	462.5125	462.5125
22	462.5375	462.5375

Troubleshooting / Frequently Asked Questions (FAQ)

Problem	Cause	Solution/Prevention
Cannot hear incoming transmission	Volume too low/muted Radio not set to correct channel	Ensure volume is above 0 Set radio to same channel as transmission
Transmission is unclear/unintelligible	Receiving signal is weak	Ensure radio is within range for current environment
Transmission is muffled	Micro/Speaker is covered	Ensure microphone/speaker is uncovered when transmitting

11

2. When radio detects a matching channel it connects to transmission.
3. To talk, press PTT button within 5 seconds of transmission.
4. Radio will resume searching 5 seconds after end of any received activity.
5. To stop scanning, press Scan button.

Keyed Tones
When powered off, press and hold the (Call/Power and Down) keys at the same time to turn on/off the keyboard ringtone.

Keyed Lock
Press and hold Menu button until Lock icon appears or disappears on LCD.

Channel Selection	Set CTCSS/DCS Privacy Codes	Set Call Tones	Set Vox	Set Dual Watch
0: OFF 1-3: CTCSS 39-121: DCS	0: OFF 1-3: CTCSS 39-121: DCS	0: OFF 1-10: Call Tones 11-22: Sensitivity	0: OFF 1-3: Sensitivity	0: OFF 1-22: Dual Watch
Tap the menu button four times, when the display channel number display flashes, press the up and down keys to set any of the 1-22 CH	Tap the menu button three times, when the privacy code display location flashes, press the up and down keys to set any of the 0-121 privacy codes. 0 indicates that the privacy code is off. 28 is CTCSS 39-121 is DCS	Tap the menu button three times, when the channel number display is flashing, press the up and down keys to set any of the 0-10 call tones. 0 indicates that the call tone is off and this state prohibits the call.	Tap the menu button five times, when the VCOX is displayed on the left side of the display and the channel number display is flashing, press the up and down buttons to set any of the VCOX 0-3 levels. 0 means VCOX is the most sensitive. Number 3 is the least sensitive.	Press the menu button five times, when the left side of the display shows 2CH, the private code display position shows CH, and the channel number display position flashes, press the up and down buttons to set the dual-frequency monitoring. 0-22 any channel.

9

Q: Are the walkie-talkie batteries rechargeable?
A: The NiMH batteries included in the package are rechargeable. You can charge the device using the rechargeable NiMH battery through the device's charging port.

Q: How far is the actual call distance of the walkie-talkie?
A: The 23-mile range is achievable in ideal conditions without obstacles. In urban or suburban areas, obstacles can reduce the range to about 15-20 miles. When battery capacity is low, the receiving distance will also be affected.

Q: How can we improve the sound quality of the walkie-talkie?
A: The signal is blocked or interfered with by the surrounding environment. Holding the device too close or far from your mouth can affect audio clarity. Obstacles and interference radio waves will affect the receiving sound. Use it in an open area as much as possible.

We'd love to hear from you. scan with your walmart app and let us know what you think.

onn.

Made in Vietnam for Walmart Inc.