

Please read the instruction manual carefully before using the product.

Version:1.0





Printer*1



Type-C Cable*1

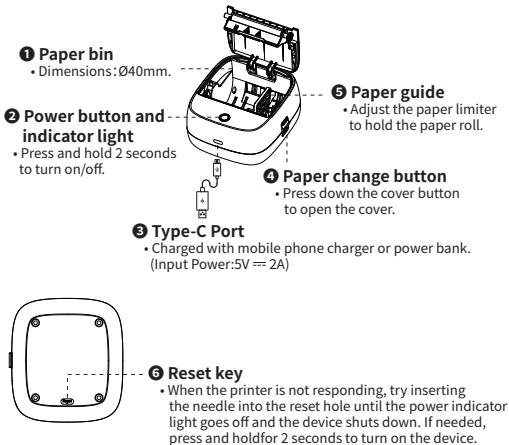


Paper*1
(In printer)

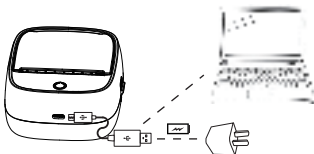


Instruction Manual*1

Name	Portable Wireless Label Printer
Model	B21
Consumable Max Width	57mm(2.24")
Supported Consumable	Recording paper,Recording sticker,Label paper
Resolution	203dpi
Communication Port	Bluetooth
Power Supply	Type-C 5V --- 2A
Product Dimensions	90*98*48.3mm(3.54"*3.86"*1.90")



- Please connect one end of the included USB cable to the device and the other end to a 5V \equiv 2A adapter or computer USB port for charging;
- Charge time: about 3 hours;
- We recommend you to use Mobile phone chargers for charging;
- If not used for a long time, please charge once every 3 months to avoid long-term natural loss of lithium battery can not be charged.



- Working environment: Use at the ambient temperature of 5°C~40°C;
- Caution! This product doesn't contain power adapter. If consumers use a power adapter for power supply, please buy a power adapter that has obtained CE and FCC certification and meets the standard requirements. The output specifications of the adapter shall comply with 5V \equiv 2A.

1
APP
Download

2
Printer
Startup

3
Connected
Printer

4
Installation
Consumables

5
Edit
Print

Method 1:

Search for [AiYin] on Google Play
or App Store.



Method 2:

Scan the following QR code
to download App.



- This product needs to be connected to the printer in the App;
- Due to the requirements of mobile phone system,the Android mobile phone will use the user's geographic location when connecting,so that the user needs to turn on the GPS and confirm the authorization;
- This app only supports phones with Android 7.0 or iOS 11.0 or above systems.

Press and hold the power button of the printer for 2 seconds to turn on the printer.



Button	Operation	Functions
Power button	Hold for 2 seconds	Power on/off
	Press twice	Print diagnostic page and the QR code to connect the printer with smart phone App
	Press once	The label will run out and stay in the gap

Light	Functions
Light steady on	Bluetooth connected
Light flashing slowly	Bluetooth disconnected
Green light on	Normal use status /Full charged
Red light on	Cover opened/No paper/Over-heat
Yellow light on	Low battery, please charge in time
Yellow light flashing quickly	Charging

Auto power off: The printer will automatically power off after 20 minutes without operation. You can set the timer in the App.



❶ Open AiYin App.



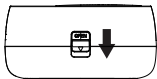
❷ Click to search for printer Bluetooth and connect.

or scan the device connection QR code by printing.

from printer after double clicking the power button.



- When connecting device in the App, please make sure that your printer is turned on and Bluetooth of your mobile phone is turned on;
- Due to the requirements of mobile phone system, the Android mobile phone will use the user's geographic location when connecting, so that the user needs to turn on the GPS and confirm the authorization;
- Please pair Bluetooth in the app, do not pair Bluetooth in the phone settings;
- If you need a PIN code, please enter 0000.

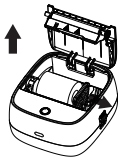


Press down the cover button to open the paper bin cover.



① Open cover.

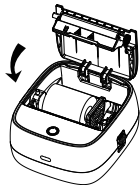
Move the paper guide to the right and load the paper with the print face down into the paper bin.



Move the paper guide to the left to secure the roll.



② Put paper in.



Press the machine to close the cover.
Please make sure to leave 0.1-0.2inches
of label paper on the outside

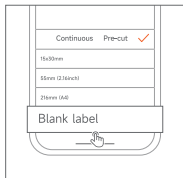


3 Close the cover.

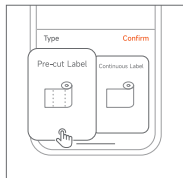
For gap label Press the power
button once, the label will
runout and stay in the gap.



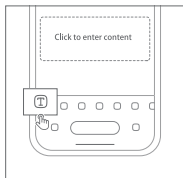
4 Label calibration.



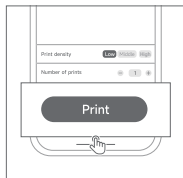
① Open the App and select the correct paper size.



② Select printing method for editing.

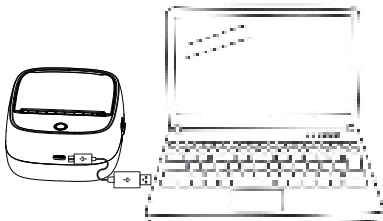


③ Edit printing content.



④ Click the print after editing.

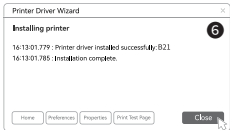
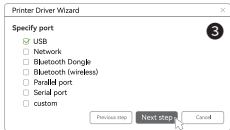
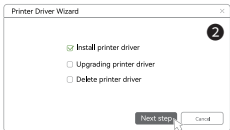
1. Turn on the printer and connect the machine to the computer using the included USB cable.



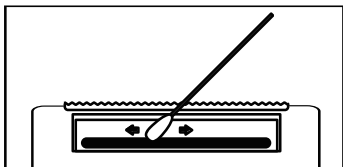
Please turn on the printer before connecting it to the computer.

2. Please go to [http://www.epson.com](#) to download the driver.
(Tip: Download the appropriate driver package according to your computer system)

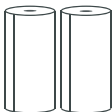
3. Decompress the driver package, double-click it, and install the driver as prompted.



- ❶ Please turn off the printer and open the printer cover and take out the paper.
- ❷ Dip a cotton cloth or cotton swab with medical alcohol, and wipe gently along the center to the periphery of the printer head.
- ❸ After cleaning the printer head, do not use the printer immediately. Please wait for 1 to 2 minutes, and then use the printer after the alcohol has completely evaporated.



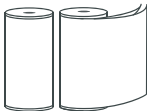
- Please do not directly touch the printing head to avoid damage. Especially, do not directly touch the printing head immediately after printing to avoid overheating and scalding.



Recording paper

Diameter 30mm

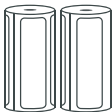
Three-proofing (moisture proofing, salt spray proofing and fungus proofing), free of Bisphenol A



Recording sticker

Diameter 30mm

Three-proofing, free of Bisphenol A



Label paper

Diameter 30mm

Three-proofing, free of Bisphenol A

This device complies with part 15 of the FCC Rules. Operation is subject to the following two conditions:

(1) This device may not cause harmful interference, and
(2) this device must accept any interference received, including interference that may cause undesired operation. Any Changes or modifications not expressly approved by the party responsible for compliance could void the user's authority to operate the equipment. This equipment has been tested and found to comply with the limits for a Class B digital device, pursuant to part 15 of the FCC Rules. These limits are designed to provide reasonable protection against harmful interference in a residential installation. This equipment generates uses and can radiate radio frequency energy and, if not installed and used in accordance with the instructions, may cause harmful interference to radio communications. However, there is no guarantee that interference will not occur in a particular installation. If this equipment does cause harmful interference to radio or television reception, which can be determined by turning the equipment off and on, the user is encouraged to try to correct the interference by one or more of the following measures:

- Reorient or relocate the receiving antenna.
- Increase the separation between the equipment and receiver.
- Connect the equipment into an outlet on a circuit different from that to which the receiver is connected.
- Consult the dealer or an experienced radio/TV technician for help. The device has been evaluated to meet general RF exposure requirement. The device can be used in portable exposure condition without restriction.

IC Caution:

Radio Standards Specification RSS-Gen, issue 5-English:

This device contains licence-exempt transmitter(s)/receiver(s) that comply with Innovation, Science and Economic Development Canada's licence-exempt RSS(s).

Operation is subject to the following two conditions:

This device may not cause interference.

This device must accept any interference, including interference that may cause undesired operation of the device.

RF exposure statement:

The device has been evaluated to meet general RF exposure requirement. The device can be used in portable exposure condition without restriction.

-French:

Cet appareil contient des émetteurs /récepteurs exemptés de licence conformes aux RSS (RSS) d'Innovation, Sciences et Développement économique Canada.

Le fonctionnement est soumis aux deux conditions suivantes:

Cet appareil ne doit pas causer d'interférences.

Cet appareil doit accepter toutes les interférences, y compris celles susceptibles de provoquer un fonctionnement indésirable de l'appareil. Déclaration d'exposition

RF:

L'appareil a été évalué pour répondre aux exigences générales d'exposition aux RF.

L'appareil peut être utilisé dans des conditions d'exposition portable sans restriction.

☐ Return☐ Exchange☐ Repair

User Info	Name: Gender: Phone:
	Address:
Product Info	Purchase date:
	Product order number:
	Product Serial Number:
Requirements of return /replacement /repair	Reason description:
Maintenance records	Failure condition: Maintenance person:
	Handling situation: Delivery date:
	Maintenance ticket number: Delivery date:

Thanks for choosing us!

Customer Support

Please kindly contact us if you have any trouble or question when installing and using.



support@aiyin.com



www.aiyin.com



help.aiyin.com

How can we help you today?

Enter your questions here 

Scan the following QR code to talk with us



at 10am to 10pm EST

Scan or upload this QR code using
the WhatsApp camera to add us

Manufacturer: Xiamen AiYin Technology Co., Ltd.