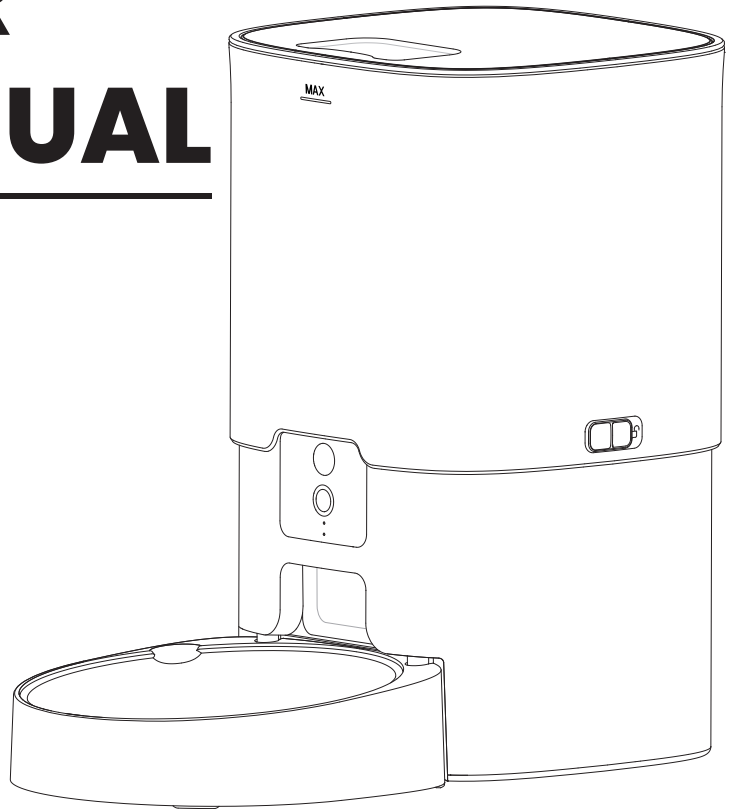


USER MANUAL

Automatic Feeder



Model: P101T03/P101201

IMPORTANT SAFETY INSTRUCTIONS

BEFORE USING THIS PRODUCT READ ALL INSTRUCTIONS
AND WARNINGS IN THIS MANUAL.

WARNING

To reduce the risk of burns, fire, electric shock, or injury to persons:

1. Do not allow children to operate the appliance or play around the product. Keep a close eye on children when they approach the product.
2. Please keep children and pets away from the plastic bags filled with product accessories which pose the risk of suffocation.
3. Do not place the product in water, which may damage its electronic components.
4. Do not place or store the product where it may fall or get pulled into bathtubs or sinks. Do not place the product in puddling or damp places.
5. The product should be placed on a level and smooth surface. To avoid tripping, please always place the product out of the paths people walk. Do not place the product near stairs.
6. The product is for indoor use only.
7. The product is intended for tossing treats and monitoring dogs and cats. Please do not use it beyond its intended purposes. Do not use this appliance for puppies and kittens under 3 months old, and do not use it for pets with physical disabilities that cannot reach the food bowl.
8. For dry food and freeze-dried food only, this appliance can adapt to pet dry food with a particle diameter of 3mm to 15mm. Please do not use it with wet food, cans, liquid treats, or powder.
9. Please check the appliance after installation. If there is water in the battery compartment, do not put the battery in.
10. Please do not place any foreign matters in the treat hopper which could lead to disfunctions or even cause harm to people or the pets.
11. When dispensing food, do not touch the food outlet and the inside of the food barrel.
12. Use only accessories sold by the manufacturer. Using accessories not approved or sold by the manufacturer may result in unsafe situations. Do not disassemble or modify the product by yourself, except for detachable accessories as shown in this user manual.
13. Please do not let your pets chew or swallow any part of the product.
14. The plastic parts of this appliance meet safety standards, but some of the pets could be sensitive to plastic itself. Please stop using the product in case of any sign of allergy from your pet and seek your veterinarian's advice.
15. It is recommended to replace the desiccant once a month. If the desiccant is damaged, please stop using it and replace it. Do not immerse the desiccant in water.
16. Please check the operation of the appliance regularly and clean the grain outlet regularly to ensure that the grain outlet function is normal.
17. Please lift the product with both hands if you need to remove it and keep it upright. Do not lift this appliance by the upper cover, grain bucket, or grain bowl.
18. To prevent pets from knocking over the appliance, it is recommended to place it in the corner of the room or against the wall.
19. If you do not use the appliance for a long time, please remove the battery. When you use it again, please replace it with a new battery.
20. The ambient temperature for operating and charging should be 32 °F to 113 °F.

READ AND SAVE THESE INSTRUCTIONS

Quick Start Guide



System Requirements

Smartphones with iOS 13.0 and above, Android 7.0 and above, and Harmony OS, Bluetooth and location permissions must be enabled.



Download by scanning the QR code on **Android** phones



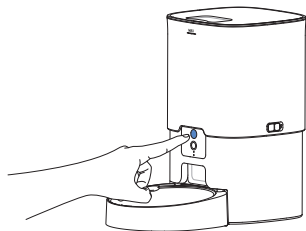
Download by scanning the QR code on **iOS** phones



Two Way for Grain Dispensing

① Dispense Grain Manually

Short press the button to wake up the feeder, then short press the button again to start dispensing food. If you need to stop dispensing food during the dispensing, short press the button twice again.



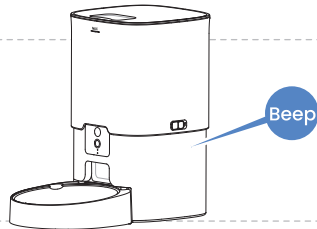
② Dispense Grain Regularly

Please set or modify the feeding schedule on your smartphone after your smartphone is connected to the feeder via WI-FI. Search for "Nexupet" in the smartphone's app store and download and install the APP. Open "Nexupet" on your phone and follow the steps in the app.



Low-battery Reminder

If powered by batteries, when the battery power is low, the feeder will emit a "beep" low-battery reminder sound every 5 minutes. Please replace the batteries with new ones in time to prevent the feeder from stopping working due to battery exhaustion.



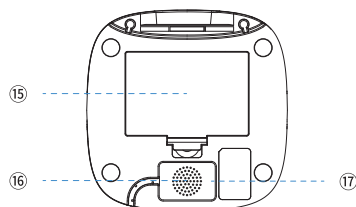
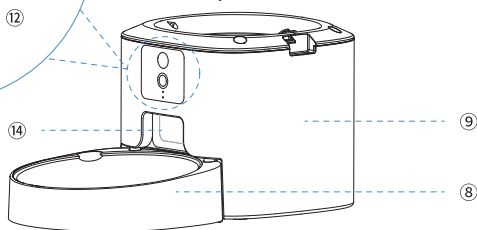
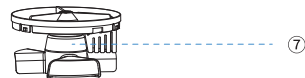
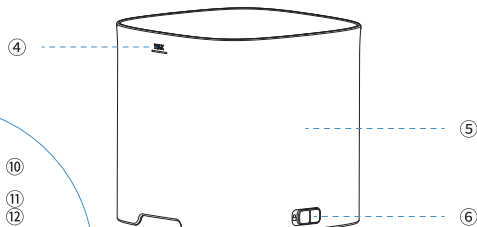
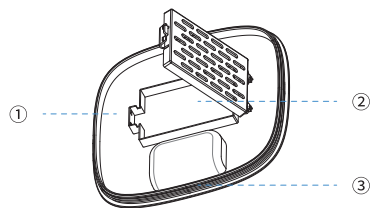
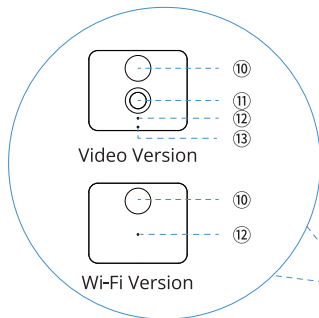
In the Box

Hand washable
at low temperature

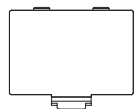
- ① Top cover
- ② Desiccant box
- ③ Sealing strip
- ④ MAX line
- ⑤ Food bucket
- ⑥ Food bucket lock
- ⑦ Grain dispenser
- ⑧ Grain bowl

Not washable

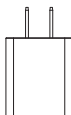
- ⑨ Host
- ⑩ Function key
- ⑪ Camera (Video Version)
- ⑫ Indicator light
- ⑬ Microphone (video Version)
- ⑭ Grain outlet
- ⑮ Battery compartment
- ⑯ Speaker
- ⑰ USB power supply port
- ⑱ Battery cover
- ⑲ Power adapter
- ⑳ USB cable
- ㉑ Desiccant
- ㉒ Quick installation guide



Bottom



⑱



⑲



⑳



㉑



㉒

Preparation Before Installation

Please clean the feeder accessories before first use.

Use neutral detergent and clean water to clean the upper cover, grain bucket, grain dispenser and grain bowl, rinse thoroughly. Use a clean soft cloth to thoroughly dry these accessories before assembling the feeder.

▲ Note: Do not wet the host, USB cable and battery to avoid damage or danger.



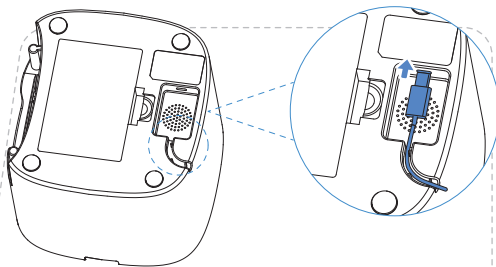
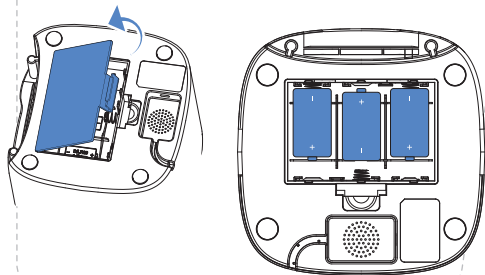
Installation

1. Power Supply Mode

① Battery power supply

Open the battery compartment cover at the bottom of the host and install 3pcs 1# batteries (D battery) according to the polarity direction. The host makes a "beep" sound after the battery is installed and then close the battery cover.

Note: Please remove the battery when not in use for a long time.



② USB cable power supply

Plug the USB cable into the USB-C port at the bottom of the host, fix the USB cable through the wire groove on the edge, and connect the other end of the USB cable to a 5V/1A power adapter.

Note: When using two power supply modes at the same time, the USB cable is the priority power supply mode and the battery is the backup power supply mode.

Guarantee Terms and Conditions

LIMITED 12-MONTH WARRANTY

Your product will be covered for parts and labor for 12 months from the date of purchase, subject to the terms of the warranty.

This warranty does not cover damage resulting from accident, misuse or abuse, lack of reasonable care, the affixing of any attachment not provided with the product or loss of parts or subjecting the product to any but the specified voltage or batteries. NO RESPONSIBILITY IS ASSUMED FOR ANY SPECIAL, INCIDENTAL OR CONSEQUENTIAL DAMAGES.

To read the warranty, please visit <https://www.xxxxxxxx.net>. To obtain warranty service, simply contact xxxxxxxxxx Customer Support for assistance.

FCC STATEMENT

1. This device complies with Part 15 of the FCC Rules. Operation is subject to the following two conditions:

- (1) This device may not cause harmful interference.
- (2) This device must accept any interference received, including interference that may cause undesired operation.

2. Changes or modifications not expressly approved by the party responsible for compliance could void the user's authority to operate the equipment.

Note: This equipment has been tested and found to comply with the limits for a class B digital device, pursuant to Part 15 of the FCC Rules. These limits are designed to provide reasonable protection against harmful interference in a residential installation.

This equipment generates uses and can radiate radio frequency energy and, if not installed and used in accordance with the instructions, may cause harmful interference to radio communications. However, there is no guarantee that interference will not occur in a particular installation. If this equipment does cause harmful interference to radio or television reception, which can be determined by turning the equipment off and on, the user is encouraged to try to correct the interference by one or more of the following measures:

- Reorient or relocate the receiving antenna.
- Increase the separation between the equipment and receiver.
- Connect the equipment into an outlet on a circuit different from that to which the receiver is connected.
- Consult the dealer or an experienced radio/TV technician for help.

The device has been evaluated to meet general RF exposure requirement, This equipment should be installed and operated with a minimum distance of 20 cm between the radiator and your body.

Changes or modifications not expressly approved by the party responsible for compliance could void the user's authority to operate the equipment.

Product Specifications

Product Name	Automatic Feeder		
Model	P101T03/P101201		
Input	USB-C (DC 5V/1A)/3pcs 1# batteries (D battery)		
Dimensions	13" x 7.3" x 12.2"		
Capacity	135 oz		
Weight	4.4 lbs		
Material	Case	Bowl	Food barrel
	ABS	ABS (Food-grade)	ABS (Food-grade)
Operating Ambient Temperature	32 °F to 113 °F		

Feeder Failure Checklist

Don't start	<p>If the feeder does not start when no battery is installed, follow these steps:</p> <ul style="list-style-type: none">• Validate the functionality of the power interface and connect the feeder to another USB power port;• Check the USB-C power cable for any signs of damage. If it is damaged, cease usage and replace the USB-C power cable;• Ensure that it meets the 5V/1A output specifications when utilizing an adapter to connect the USB-C power cable;• Please try to use battery power supply and insert 3pcs new 1# batteries (D battery) and refer "Feeder Installation" section for battery installation. <p>If the feeder does not start when battery is installed, follow these steps:</p> <ul style="list-style-type: none">• Check whether the battery is correctly loaded into the battery bin according to the polarity direction. For the method of installing the battery, see "Installing the Feeder" section;• Check whether the plastic protective film of the battery has been torn off. If not, the battery cannot supply power normally;• Battery may be exhausted, replace 3pcs new 1# battery (D battery).
Stop working	<p>If the feeder does not start when no battery is installed, follow these steps:</p> <ul style="list-style-type: none">• If the feeder stops working, remove and reinsert the USB-C power cable to ensure a secure connection. <p>If the feeder does not start when battery is installed, follow these steps:</p> <ul style="list-style-type: none">• If your feeder emits a low power alert sound every 5 minutes, replace all 3pcs 1# battery (D battery).
Grain Dispensing Problems	<ul style="list-style-type: none">• Check planned grain settings for correct time and portion values (not set as 0);• Try the manual feed mode (press the button twice) to check whether the grain distributor rotates normally;• If the distributor rotates normally in manual feed mode, check whether the feed outlet is stuck and obstructs the feed output;• If the distributor does not rotate in manual feed mode, contact customer service for further technical support.
Food outlet is not closed during non-dispensing time	<ul style="list-style-type: none">• Try the manual feed mode (press the button twice) to check whether the grain distributor rotates normally. If the distributor rotates, it automatically resets and closes the outlet;• If the divider does not turn in manual feed mode, remove and reinstall the divider. For details on how to remove/install the divider, see "Installing the Feeder". After the grain divider is installed, try the manual grain mode again to check whether the grain divider rotates normally.
Can't connect with mobile application	<ul style="list-style-type: none">• Make sure the Bluetooth function of the phone is enabled;• Put the mobile phone as close as possible to the feeder, and the connection distance should be kept within 2m;• Press the button, if the status indicator flashes and the feeder is displayed on the mobile app, you can operate the connection according to the indication in the app;• If the status indicator is blinking and the feeder is still not displayed on the app, or the feeder is displayed but cannot be connected, press and hold the key for 10 seconds to restore the factory Settings and try to connect the app again. If you still cannot connect after attempting the above steps, contact customer service for further technical support.

**Contact customer service if issues persist after attempting previous solutions;
do not disassemble the feeder host for maintenance.**

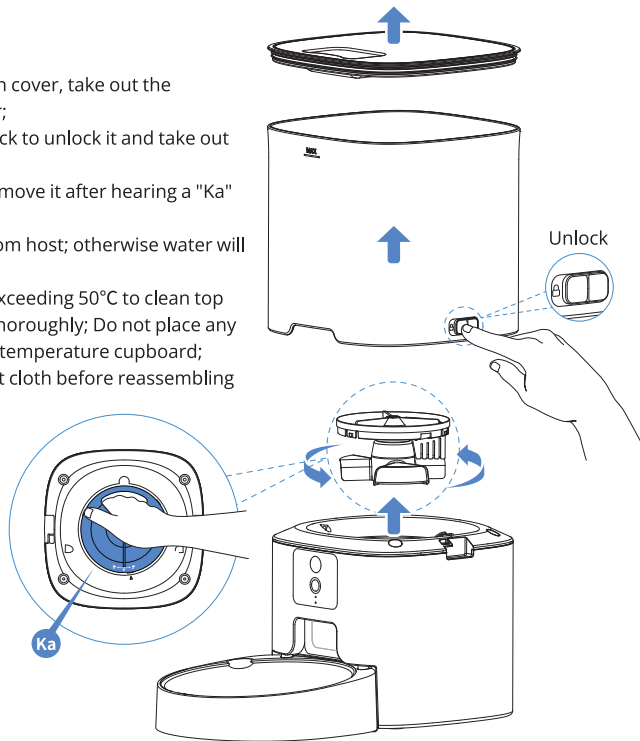
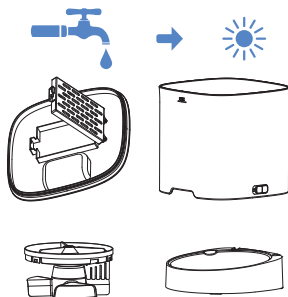
Daily Maintenance and Cleaning

Daily Maintenance

It is recommended to remove the food bucket and the food separator after seven days of continuous operation to clean the food residue and the food separator to ensure the normal operation of the feeder; Please clean the feeder regularly to avoid contamination of grain due to food residue and grease spoilage.

Clean Instructions for Feeder

1. Unplug the feeder;
2. Open the upper cover, open the desiccant bin cover, take out the desiccant, desiccant do not immerse in water;
3. Turn latches on both sides of Food bucket back to unlock it and take out Food bucket upward;
4. Rotate grain distributor counterclockwise, remove it after hearing a "Ka" sound;
5. Please clean it only after separating barrel from host; otherwise water will enter host through axis causing damage;
6. Use neutral detergent and warm water not exceeding 50°C to clean top lid, grain bucket, grain distributor and bowl thoroughly; Do not place any accessories in dishwasher or sterilize at high temperature cupboard;
7. Cleaning all parts thoroughly with a clean soft cloth before reassembling feeder.



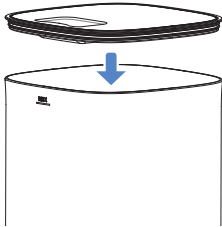
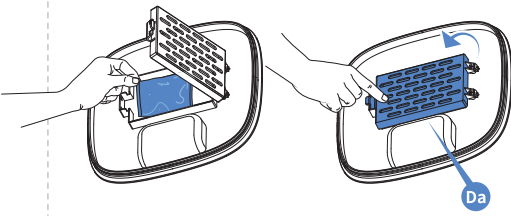
▲ Tips

- 1) Keep host, USB cable and battery away from water to avoid damage or danger;
- 2) Do not place any accessories in dishwasher or sterilize at high temperature cupboard.

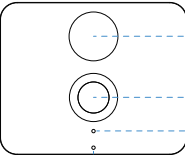
5.Cover Installation

❶ Remove desiccant packet from transparent airtight bag and place it inside desiccant bin within top cover before closing it securely — audible click confirms successful installation.

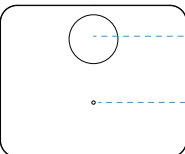
❷ Align top cover with Food bucket, close firmly ensuring sealed fit by pressing down.



Indicators



Video Version



Wi-Fi Version

- Function key
- Camera
- Indicator light
- Microphone

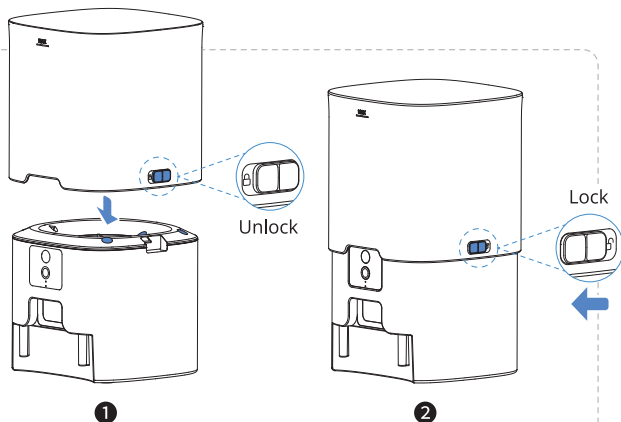
- Function key
- Indicator light

Blue	Blinking blue light	Waiting for network connection.
	Steady blue light	Connect network successfully, working.
Red	Blinking red light	Grain dispensing failure.
	Steady red light	Low food warning.
Yellow	Blinking yellow light	Battery power low.
	Steady yellow light	Network failure.

2. Food Bucket Installation

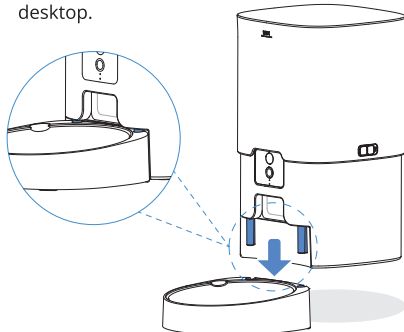
Positioning on top of main engine, aligning bulge of Food bucket with hole on main engine is essential before lowering it down so that Food bucket snugly fits onto main engine; subsequently pull locks on left and right sides forward into [🔒] until hearing a "Da" indicating successful locking and completion of installation.

Note: To remove the locked Food bucket, turn the left and right locks back to the [🔓], and lift up to remove the Food bucket.



3. Food Bowl Installation

Place grain bowl on desktop surface ensuring alignment between convex slot on host and groove on grain bowl; press down firmly for proper contact between host and desktop.



4. Dry Food Filling

Fill grain bucket with dry food without exceeding MAX scale line marked on front wall of grain bucket; recommended particle diameter for pet food ranges from 1/8" - 5/8" .

Tips



Applicable food

Dry, freeze-dried, air-dried or raw blend pet food with a diameter of 1/8"- 5/8".



Inapplicable food

Wet cans, liquid food, drinks or fresh food.

