

PHILIPS

headset

3000 series

TAT3469



user 's manual

Visit the following website to register your product and
get support at www.philips.com/support

1	Important safety instructions	2
	General information on hearing safety	2
2	Open Wireless Earphones Packaging Box	3
	Items Other Devices	3
	Overview of Open Wireless Earphones	3
		4
3	Getting Started	5
	For the first time, pairing headphone with Bluetooth devices and pairing them with another Bluetooth device for battery charging and wearing	5
		6
		6
		7
4	Using Headphones	8
	Connect to Bluetooth device	8
	Power on/off	8
	Manage music and calls	8
	Voice assistant	9
	Charging case LED indicator status	9
5	Reset headphones	10
6	Technical Data	11
7	notice	12
	Declaration of Conformity	12
	Disposal of old products and batteries	12
	Dismantling the integrated battery	12
	Compliant with Electromagnetic Field (EMF) regulations	13
	Environmental Information	13
	Compliance Statement	13
8	trademark	15
9	Frequently Asked Questions and Answers	16

1 Important safety instructions

general information

Hearing safety



danger

• To avoid hearing loss, the time spent using headphones at high volume should be limited, and the volume should be set to a safe level. The louder the volume, the shorter the safe listening time.

Please ensure to follow the following guidelines when using headphones.

• Listen at a reasonable volume within a reasonable time.
After adapting to hearing, be careful not to continuously increase the volume.

Do not turn up the volume too high so that you cannot hear the surrounding sounds.

Be cautious when using or temporarily suspend the use of headphones in potentially dangerous situations.

Excessive sound pressure from headphones can cause hearing loss.

It is recommended not to wear headphones on both ears while driving.

This may be considered illegal in some areas.

- For safety reasons, when driving or in other potentially dangerous environments, you should avoid letting music or phone calls distract your attention.

To avoid damage or malfunction:



warning

- Do not place headphones in high temperature environments.
- Do not drop the earphones.
 - Do not place the headphones in a dripping or splashing environment. (Refer to the IP rating of a specific product)
- Do not immerse the headphones in water.
- Do not charge the earphones when the interface or socket is damp.
- Do not use any cleaning agents containing alcohol, ammonia, benzene, or abrasives to clean products.
- If necessary, please use a soft cloth to clean the product. Use a small amount of water or diluted neutral soapy water to wet the cloth for cleaning.
- Do not place integrated batteries in high-temperature environments such as direct sunlight, open flames, or similar environments.
- Improper battery replacement can pose a risk of explosion. Replace only with batteries of the same type.
- To achieve a specific IP level, the charging port cover must be closed.
- Putting the battery into a fire or hot oven, or mechanically crushing or cutting it, can cause an explosion.
- Placing batteries in extremely high temperature environments can cause explosions or leakage of flammable liquids or gases.
- Placing the battery in an extremely low-pressure environment may result in explosion or leakage of flammable liquids or gases.
- To avoid the risk of fire, the equipment can only be supplied by an external power source, and its output should comply with PS1 (output capacity less than 15W).

Operation and storage temperature and humidity

• Store the product in an environment with a temperature between -20°C (-4°F) and 50°C (122°F) and a maximum relative humidity of 90%.

Operate the product in an environment with a temperature between 0°C (32°F) and 45°C (113°F) and a maximum relative humidity of 90%.

- High or low temperature environments may shorten battery life. Replacing batteries with incorrect models may seriously damage headphones and batteries (such as certain types of lithium batteries)
- Pool).

2 Open Wireless Earphones

Welcome to purchase and use Philips products! To ensure that you charge

To share the support provided by Philips, please visit www.philips.com/support

Using this Philips true wireless earphone, you can:

- Enjoy convenient wireless hands-free calling
- Enjoy and control music wirelessly
- Switch between calls and music

Items inside the packaging box



Philips Open Wireless Earphones

Philips TAT3469



Type-C charging cable (for charging only)



Quick Start Guide



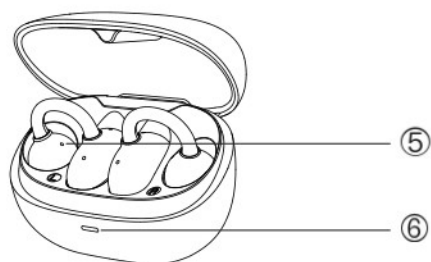
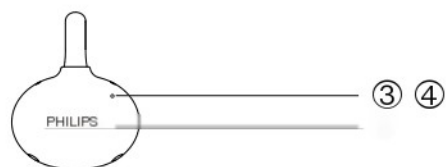
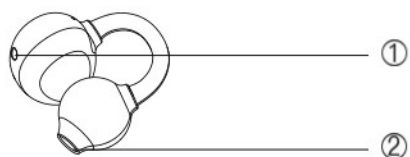
Warranty bill



Safety Manual

Other devices

A phone or device that supports Bluetooth and is compatible with headphones (such as laptops, tablets, Bluetooth adapters, MP3 players, etc.).



- ① Charging contact
- ② Sound hole
- ③ Maikong
- ④ Multi functional buttons (MFT)
- ⑤ Leakage hole
- ⑥ LED indicator light (charging compartment)
- ⑦ USB-C charging interface

3. Beginner's Guide to Use

Battery charging

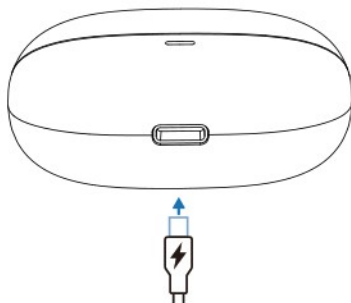
three be careful

• Before using the headphones, please place them in the charging case and charge the battery for 2 hours to ensure optimal battery power and lifespan.

- Only use the original USB-C charging cable to avoid any damage.
- Charge again after ending the call. Connect the earphones to the charger, and the earphones will automatically shut down.
- If headphones are not used for a long time, the rechargeable battery's storage capacity will be insufficient. To avoid such losses, please fully charge the battery at least once every three months.

Charging case

Connect one end of the USB-C charging cable to the charging case and the other end to the power source.

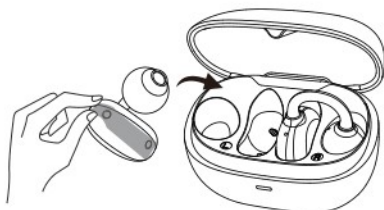


Tips

• The charging case is used as a portable backup battery to charge the earphones. After the charging case is fully charged, it can fully charge the earphones twice.

headset

Put the earphones into the charging case, close the charging case cover, and the earphones start charging.



rice Tips

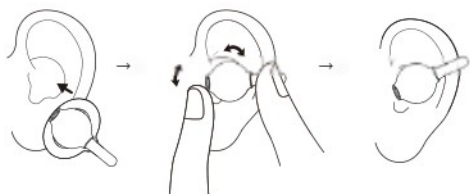
• Usually, it takes 2 hours to fully charge the earphone or charging case through a USB cable.

Wearing method

Insert headphones

Check the left and right orientation of the headphones.

Insert the headphones into your ear and gently twist them until they are firmly attached.



Pairing headphones with Bluetooth devices for the first time

1. Ensure that the earphones are fully charged and the power is turned off.

2. Open the charging case cover and remove the earphones from the charging case:

The earphones are now in pairing mode and can be paired with Bluetooth devices such as mobile phones

3. Turn on the Bluetooth function of the Bluetooth device

Pair the earphones with Bluetooth devices. Please refer to the user manual of the Bluetooth device.



be careful

After turning on, if the earphones cannot find any previously connected Bluetooth devices, please set them to pairing mode (after 1 minute, if the last connected device is unavailable, it will automatically enter pairing mode)

The following example demonstrates how to pair headphones with Bluetooth devices.

1. Turn on the Bluetooth function of the Bluetooth device and select Philips TAT3469

If prompted to enter the headphone password, please enter "0000" (4 zeros). For Bluetooth devices equipped with Bluetooth 3.0 or higher versions, no password is required.



Philips TAT3469

Single earphone (mono mode)

Remove the left or right earphones from the charging case for mono mode. The headphones will automatically turn on.



be careful

· Remove the second earphone from the charging case, and the two earphones will automatically pair.

Pair with another Bluetooth device

If you want to pair another Bluetooth device with the earphones, simply disconnect the currently connected Bluetooth device and pair it with the other device using the usual pairing method.



be careful

· The headphone memory can store up to 4 devices. If more than 4 devices are attempted to pair, the earliest paired device will be replaced by the latest paired device.

4. Use headphones

Connect to Bluetooth device

1. Turn on the Bluetooth function of the Bluetooth device
2. Open the charging case cover and remove the earphones from the charging case.

The earphones will search for the last connected Bluetooth device and automatically reconnect with it. If the last connected device is unavailable, the earphones will search and reconnect to the second last connected device.

rice Tips

· If you first turn on the earphones and then turn on the Bluetooth function of the Bluetooth device, you must go to the Bluetooth menu of the device and manually connect the earphones to the Bluetooth device.

be careful

· In some Bluetooth devices, the earphones may not automatically connect. In this case, you must go to the Bluetooth menu of the device and manually connect the headphones to the Bluetooth device.

Power on/off

task	multiple use key	operation
Turn on headphones		Open the charging case cover, the earphones will automatically turn on
Turn off headphones		Put the earphones back into the charging case, close the lid, and turn off the earphones

Manage music and calls

Music control

task	multiple use key	operation
Play or pause music	Right/left earphones	double-click
Next song	Right earphone	Press three times
Previous song	Left earphone	Press three times
Adjust the volume+	Right earphone	Click or long press again
Adjust the volume-	Left earphone	Click or long press again

call control

task	multiple use key	operation
Pick up the phone	Right/left earphones	single click
Hang up the phone	Right/left earphones	double-click
Reject incoming calls	Right/left earphones	double-click

Voice assistant

task	Button	operation
Trigger voice assistant (Siri/Google)	Long press and hold the right/left earphones for 2 seconds	
Stop voice assistant. Press and hold the right/left earphones for 1 second		

Charging case LED indicator status

When charging	indicator light
Electricity level \leq 30%	Orange LED always on
Electricity 230%	White LED always on
Fully charged	The light is off
When not charged (Open lid, close lid)	indicator light
Low electricity	The orange indicator light is slow Flashing 4 times
Electricity level \leq 30%	Orange LED stays on for 4 seconds
Electricity 230%	White LED stays on for 4 seconds

5 Reset Earphones

If you encounter any pairing or connection issues, you can follow the steps below to reset the headphones to factory settings.

1. Enter the Bluetooth menu of the Bluetooth device and remove Philips TAT3469 from the device list

2. Turn off the Bluetooth function of the Bluetooth device.

3. Remove the earphones from the charging case (ensuring no Bluetooth device is connected).

Simultaneously press and hold the L/R multifunction touch key for 4 seconds to clear all information.

Follow the steps in "Using Earphones – Connecting Earphones to Bluetooth Devices".

Pair the earphones with your Bluetooth device and select Philips TAT3469

6 Technical Data

- Music playback time: 6+12 hours
 - Earphone charging time: 1.5H
 - Charging time of charging compartment: 1.5H
- Both earphones are equipped with 35mAh lithium-ion batteries,
- The charging box contains a 300mAh lithium-ion battery
 - Bluetooth version: 5.4
 - Compatible Bluetooth configuration protocol:
 - HFP (Hands Free Configuration Protocol)
 - A2DP (Advanced Audio Transmission Protocol)
 - AVRCP (Audio Video Remote Control Protocol)
- Supported audio decoding: SBC
- Frequency range: 2.402–2.480GHz
- Transmitter power: <10dBm
- Operating distance: up to 10 meters away
 - Automatically turn off the power
- USB-C type charging port
- Low battery warning: Provided



be careful

· Specifications may change at any time without prior notice.

7 Notice

Declaration of Conformity

MMD Hong Kong Holding Limited hereby declares that this product complies with the basic requirements and other relevant regulations of the RED Directive 2014/53/EU and the UK Radio Equipment Regulation SI2017No1206. You can log in to www.philips.com/support to find the compliance sound

Ming.

Disposal of old products and batteries



The product is designed and manufactured using high-quality materials and components, and can be recycled and reused.



This symbol on the product indicates that it is regulated by European Directive 2012/19/EU.



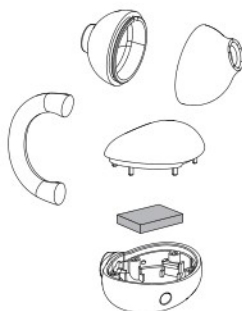
This symbol indicates that this product contains European

The built-in rechargeable battery regulated by Directive 2013/56/EU cannot be disposed of together with ordinary household waste. We strongly recommend that you send the product to the official recycling point or Philips service center for professional personnel to remove the rechargeable battery. Please search for a specialized recycling system locally applicable to electrical and electronic products, as well as rechargeable batteries. Please comply with local regulations and do not dispose of this product and rechargeable batteries together with regular household waste. Properly handling old products and rechargeable batteries will help avoid negative impacts on the environment and human health.

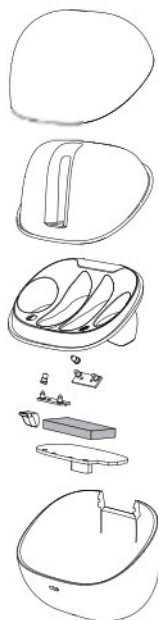
Dismantling the integrated battery

If your country/region does not have a collection/recycling system for electronic products, please remove and recycle batteries before disposing of headphones to protect the environment.

Before removing the battery, ensure that the earphones are disconnected from the charging case.



Before removing the battery, ensure that the charging case is disconnected from the USB charging cable.



Compliant with Electromagnetic Field (EMF) regulations

This product complies with all applicable standards and regulations regarding electromagnetic field exposure.

Environmental Information

All unnecessary packaging has been omitted. We strive to make packaging easy to be divided into three materials: cardboard (box), foam plastic (buffer) and polyethylene (bag, protective foam board). Your system contains recyclable materials (if dismantled by a professional company). Please comply with local regulations regarding the handling of packaging materials, waste batteries, and old equipment.

Compliance Statement

This device complies with Part 15 of the FCC regulations. The operation must comply with the following two conditions:

1. This device will not cause harmful interference.
2. This device must be able to accept any interference received, including interference that may cause the device to malfunction.

FCC rules

This device has been tested and proven to comply with the restrictions on Class B digital devices in Part 15 of the FCC regulations. These restrictions aim to provide reasonable protection against harmful interference in residential facilities. This device generates, uses, and radiates radio frequency energy. If not installed and used according to the instruction manual, it may cause harmful interference to radio communication.

However, there is no guarantee that interference will not occur in a particular installation. If this equipment does cause harmful interference to radio or television reception, which can be determined by turning the equipment off and on, the user is encouraged to try to correct the interference by one or more of the following measures:

- Reorient or relocate the receiving antenna.
- Increase the separation between the equipment and receiver.
- Connect the equipment into an outlet on a circuit different from that to which the receiver is connected.
- Consult the dealer or an experienced radio/TV technician for help.

Readjust or rearrange the receiving antenna

Increase the distance between the device and the receiver

Connect the device to a socket on a circuit different from the one connected to the receiver

Consult with dealers or experienced radio/television technicians for assistance

FCC Radiation Exposure Statement:

The equipment complies with FCC radiation exposure limits for uncontrolled environments.

Its transmitter shall not be placed in the same location or used together with any other antenna or transmitter.

Warning: Without explicit approval from regulatory authorities, users may lose their device operation privileges by making unauthorized changes or modifications to the product.

Canada

The license free transmitter/receiver included in this device complies with the license free RSS standard of the Department of Innovation, Science and Economic Development Canada. The operation must comply with the following two conditions: (1) This device will not cause interference. (2) This device must be able to accept any interference received, including interference that may cause the device to malfunction.

IC Radiation Exposure Statement:

This device complies with Canada's radiation exposure restrictions for uncontrolled environments.

Its transmitter shall not be placed in the same location or used together with any other antenna or transmitter.

CAN ICES-003(B)/NMB-003(B)

FCC Warning:

This equipment has been tested and found to comply with the limits for a Class B digital device, pursuant to part 15 of the FCC Rules. These limits are designed to provide reasonable protection against harmful interference in a residential installation. This equipment generates, uses and can radiate radio frequency energy and, if not installed and used in accordance with the instructions, may cause harmful interference to radio communications. However, there is no guarantee that interference will not occur in a particular installation. If this equipment does cause harmful interference to radio or television reception, which can be determined by turning the equipment off and on, the user is encouraged to try to correct the interference by one or more of the following measures:

- Reorient or relocate the receiving antenna.
- Increase the separation between the equipment and receiver.
- Connect the equipment into an outlet on a circuit different from that to which the receiver is connected.
- Consult the dealer or an experienced radio/TV technician for help.

Caution: Any changes or modifications to this device not explicitly approved by manufacturer could void your authority to operate this equipment.

This device complies with part 15 of the FCC Rules. Operation is subject to the following two conditions:

(1) This device may not cause harmful interference, and (2) this device must accept any interference received, including interference that may cause undesired operation.

This equipment complies with FCC radiation exposure limits set forth for an uncontrolled environment. This equipment should be installed and operated with minimum distance 0cm between the radiator and your body.

8 trademarks

Bluetooth

The Bluetooth text mark and logo are registered trademarks of Bluetooth SIG, Inc., and any use of this mark by MMD Hong Kong Holding Limited is licensed. Other trademarks and product names are the trademarks and product names of their respective owners.

Siri

Siri is a registered trademark of Apple Inc. in the United States and other countries/regions.

Google

Google and Google Play are registered trademarks of Google LLC.

9 Frequently Asked Questions and Answers

The Bluetooth earphones cannot be turned on.

The battery is low. Charge the earphones.

Bluetooth earphones cannot pair with Bluetooth devices. The Bluetooth function is not turned on. Before turning on the headphones, first turn on the Bluetooth device and enable the Bluetooth function on the device.

Unable to pair.

- Put the two earphones into the charging case.

- Ensure that the Bluetooth function of any previously connected

Bluetooth devices has been disabled.

- Go to the Bluetooth device and remove Philips TAT3469 from the Bluetooth list

- Pair the earphones (see page 6 for the first pairing of earphones with Bluetooth devices).

The Bluetooth device cannot find the earphones.

- The headphones may have been connected to a previously paired device. Close the connected device or move it out of the connection range.

- The pairing may have been reset, or the earphones may have been previously paired with another device. Re pair the earphones with the Bluetooth device according to the instructions in the user manual. (See page 6 for pairing headphones with Bluetooth devices for the first time).

The Bluetooth earphones are connected to a phone that supports Bluetooth stereo, but music can only be played through the phone's speakers.

Please refer to the user manual of your mobile phone. Choose to listen to music through headphones.

The sound quality is too poor, you can hear popping sounds.

- The Bluetooth device is out of the connection range. Shorten the distance between headphones and Bluetooth devices, or move away obstacles between the two.

- Charge the earphones.

When mobile phone transmission is slow, or when audio transmission is impossible, the sound quality is very poor.

Ensure that your phone not only supports (mono) HFP, but also A2DP, and is compatible with BT4.0x (or higher version) (see technical data on page 11).



2024 ©MMD Hong Kong Holding Limited. All rights reserved. Specifications may change at any time without prior notice. Philips and the Philips Shield logo are registered trademarks of Koninklijke Philips NV, and their use has been licensed. The product is manufactured and sold by MMD Hong Kong Holding Limited or its subsidiaries, and MMD Hong Kong Holding Limited is the guarantor of this product. All other company and product names may be trademarks of their respective affiliated companies.

