

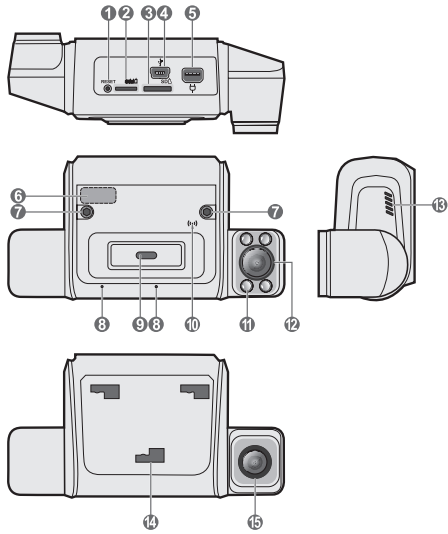
# Installation Guide

## N664 Dashcam

### I. What's in the Box

- Dash cam with front and interior-facing cameras
- Rear mounting plate with adhesive tape
- Top cover
- Cable cap
- Y-cable
- OBD-II cable
- 10-pin to open end cable
- Rear recording camera with cable (selected models only)

### II. Product Overview



- |                             |  |
|-----------------------------|--|
| ① Reset button              | ⑨ Emergency recording indicator/button |
| ② SIM card slot             | ⑩ WIFI/mobile broadband indicator      |
| ③ MicroSD slot              | ⑪ Infrared illuminator (x4)            |
| ④ Rear camera connector     | ⑫ Interior-facing camera               |
| ⑤ Charging/data port        | ⑬ Speaker                              |
| ⑥ NFC sensor                | ⑭ Mounting slot (x3)                   |
| ⑦ Camera locking screw (x2) | ⑮ Front-facing camera                  |
| ⑧ Microphone (x2)           |  |

### III. Device Installation

#### Precautions and notices

- For your own safety, do not operate the controls of the product while driving. Using this product does not exempt the driver from taking full responsibility for his/her driving behaviour, which includes observing all traffic rules and safety regulations.
- Make sure the dash cam is positioned in a way that does not obstruct the driver's view or airbag deployment.
- Make sure that no object is blocking the camera lens and no reflective material appears near the lens. Please keep the lens clean.
- Video quality may be degraded if the vehicle's windscreen is tinted.
- If the car's windscreen is tinted with a reflective coating, its surface may be athermic and impact GPS reception. In this instance, please mount the device in a "clear area".
- The device will automatically calibrate its G-sensor during start-up. Always turn on the device after it is mounted in place to avoid G-sensor malfunction.

### Mounting the dash cam

- The dash cam should be placed near the rear-view mirror to ensure the highest video quality, but never position the device where the driver's field of vision is blocked.
- When adjusting the dash cam's viewing angle, make sure the vehicle is parked on level ground and the camera's view is parallel to the ground. The ground to sky ratio should be approximately 6 to 4.

#### Note:

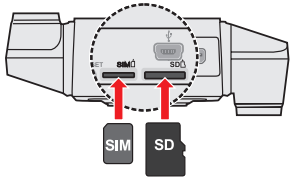
- Cleaning the windscreen with rubbing alcohol before mounting the dash cam is highly recommended.
- The double-sided adhesive tape can be replaced if it is no longer adhering to the windscreen properly.

#### SIM and memory cards

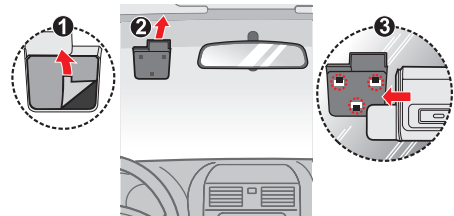
A MicroSD card (up to 256GB in capacity) and a Nano SIM card must be inserted prior to mounting the dash cam on the windscreen.

It is very important to use a MicroSD card specifically designed to be used in dash cameras. It ensures the card will be more reliable and last longer; the wrong type of card has a greater chance of failing, even after a short period of time.

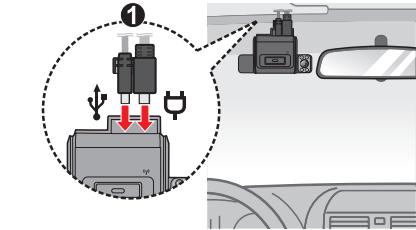
To insert a card, hold each card by the edges and gently insert it into the slot as shown in the illustration. To remove a card, gently push the top edge of the card inwards to release it and pull it out of the slot.



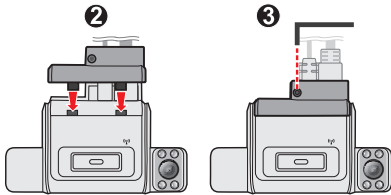
1. Route the Y-cable inside the vehicle, leaving the main connector exposed at where the dash cam is to be installed on the windscreen and the other end going toward the vehicle's OBD-II port.
2. Peel the film off from the back of the rear plate.
3. Affix the rear plate securely onto the windscreen.
4. Attach the dash cam to the rear plate by matching the positions of the three mounting holes on the back of the camera with the hooks on the rear plate. Slide the dash cam to the left to lock it in place.



5. Connect the main connector to the dash cam. If your product includes a rear recording camera, connect the rear camera cable to the mini-USB port as shown.



6. Attach the top cover to the dash cam and tighten the screw with an M2 hex key.

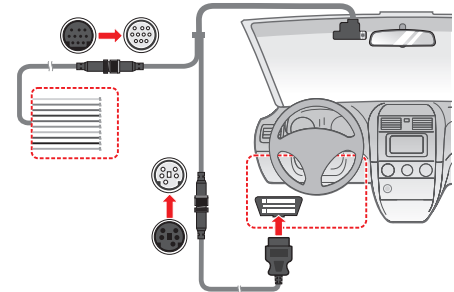


7. Cover exposed cables coming out the dash cam with the cable cap. The rubber cap can be trimmed to desired length with a pair of scissors.

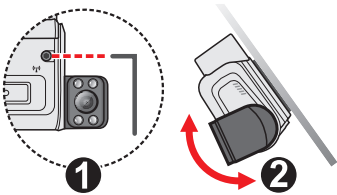
8. Plug the OBD-II connector into the vehicle's OBD-II port and use the following table to connect the colour-coded open wires:

Colour	Connection
Red	Accessory (ACC)
Orange	Reverse
Yellow	Input
Green	RS232 TX Out (to vehicle)
Blue	Speed pulse
Purple	Input
Brown	Input
Grey	Output
Black	Ground
White	RS232 TX In (to dash cam)

The following is a complete connection diagram:



9. Adjust the viewing angle of the front and interior facing cameras by loosening the corresponding locking screw with an M2 hex key. Tighten the locking screws once the viewing angles are set.

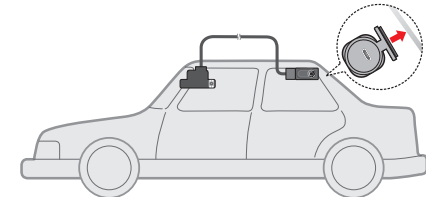


#### Rear recording camera

A rear recording camera is included with selected models. Before installing the rear recording camera, please wipe the surface clean with rubbing alcohol. Select a suitable location for mounting the rear recording camera so that the driver's field of vision is not obscured.

- 
- ① Camera lens
  - ② Mounting base
  - ③ Micro-USB port

One end of the rear camera cable should already be connected to the dash cam (see step No. 5 of the installation instructions). Once the rear camera is mounted in the appropriate location, connect the other end of the cable to the rear camera's micro-USB port.



### IV. LED Indicators

Recording/emergency recording LED:

Behaviour	Indication
Red, always on	Normal recording in progress
Red, blinking slowly	Emergency recording in progress
Red, blinking rapidly	Memory card error

WIFI/mobile broadband LED:

Behaviour	Indication
Cyan	System initializing
Green, always on	WIFI connected
Blue, always on	Mobile broadband connected
Blue, blinking	Mobile broadband disconnected

### V. For more information

#### Caring for your device

- Taking good care of your device will ensure trouble-free operation and reduce the risk of damage.
- Keep your device away from excessive moisture and extreme temperatures.
- Avoid exposing your device to direct sunlight or strong ultraviolet light for extended periods of time.
- Do not place anything on top of your device or drop objects on your device.
- Do not drop your device or subject it to severe shock.
- Do not subject your device to sudden and severe temperature changes. This could cause moisture condensation inside the unit, which could damage your device. In the event of moisture condensation, allow the device to dry out completely before use.
- Never attempt to disassemble, repair or make any modifications to your device. Disassembling, modifying or any attempt to repair could cause damage to your device, may inflict bodily harm or damage to property and will void any warranty.
- Do not store or carry flammable liquids, gases or explosive materials in the same compartment as your device, its parts or accessories.
- To discourage theft do not leave the device and accessories in plain view in an unattended vehicle.
- Overheating may damage the device.

#### About GPS

- GPS (Freq=1575.42MHZ) is operated by the United States government, which is solely responsible for the performance of GPS. Any change to the GPS system can affect the accuracy of all GPS equipment.
- GPS satellite signals cannot pass through solid materials (except glass). When you are inside a tunnel or building, GPS positioning is not available. Signal reception can be affected by situations such as bad weather or dense overhead obstacles (e.g. trees, tunnels, viaducts and tall buildings).
- The GPS positioning data is for reference only.

### Regulatory Information

For regulatory identification purposes, the device is assigned a model number of N664 / Dashcam.

#### Federal Communication Commission Interference Statement

This device complies with Part 15 of the FCC Rules. Operation is subject to the following two conditions: (1) This device may not cause harmful interference, and (2) this device must accept any interference received, including interference that may cause undesired operation.

This equipment has been tested and found to comply with the limits for a Class B digital device, pursuant to Part 15 of the FCC Rules. These limits are designed to provide reasonable protection against harmful interference in a residential installation. This equipment generates, uses and can radiate radio frequency energy and, if not installed and used in accordance with the instructions, may cause harmful interference to radio communications. However, there is no guarantee that interference will not occur in a particular installation. If this equipment does cause harmful interference to radio or television reception, which can be determined by turning the equipment off and on, the user is encouraged to try to correct the interference by one of the following measures:

- Reorient or relocate the receiving antenna.
- Increase the separation between the equipment and receiver.
- Connect the equipment into an outlet on a circuit different from that to which the receiver is connected.
- Consult the dealer or an experienced radio/TV technician for help.

FCC Caution: Any changes or modifications not expressly approved by the party responsible for compliance could void the user's authority to operate this equipment.

This transmitter must not be co-located or operating in conjunction with any other antenna or transmitter.

This device contains licence-exempt transmitter(s)/receiver(s) that comply with Innovation, Science and Economic Development Canada's licence-exempt RSS(s). Operation is subject to the following two conditions: (1) This device may not cause interference. (2) This device must accept any interference, including interference that may cause undesired operation of the device.

L'émetteur/récepteur exempt de licence contenu dans le présent appareil est conforme aux CNR d'Innovation, Sciences et Développement économique Canada applicables aux appareils radio exempts de licence. L'exploitation est autorisée aux deux conditions suivantes : 1) L'appareil ne doit pas produire de brouillage; 2) L'appareil doit accepter tout brouillage radioélectrique subi, même si le brouillage est susceptible d'en compromettre le fonctionnement.

This device has been tested and meets applicable limits for Radio Frequency (RF) exposure. This equipment should be installed and operated with minimum distance 30 cm between the radiator and your body.

USA Contact Information  
Magellan  
279 E Arrow Highway San Dimas, CA 91773 USA  
+1 909-394-5000  
<http://www.magellangps.com>

#### CE



Products with the CE marking comply with Radio Equipment Directive (Directive 2014/53/EU) - issued by the Commission of the European Community.

Compliance with these directives implies conformity to the following European Standards:

- EN 301 489-1 V2.2.3 (2019-11)
- EN 301 489-3 V2.1.1 (2019-03)
- EN 301 489-17 V3.1.1 (2017-02)
- EN 301 489-19 V2.1.1 (2019-04)
- Draft EN 301 489-52 V1.1.0 (2016-11)
- EN 55032:2015+AC:2016, Class B
- EN 55035:2017
- EN 50498:2010
- ISO 7637-2:2004
- EN 300 328 V2.2.2
- EN 300 440 V2.1.1; 2017
- IEC60950-1(ed.2); am1; am2

- IEC62368-1:2014 (EN62368-1:2014/A11:2017)
- The manufacturer cannot be held responsible for modifications made by the User and the consequences thereof, which may alter the conformity of the product with the CE Marking.

#### Declaration of conformity

Hereby, MITAC declares that this N664 is in compliance with the essential requirements and other relevant provisions of Directive 2014/53/EU.

#### Maximum power for each band

- LTE-FDD: B1/ B2/ B3/ B4/ B5/ B7/ B8/ B20/ B28 (25dBm)
- LTE-TDD: B38/ B39/ B40/ B41 (25dBm)
- WCDMA: B1/ B2/ B4/ B5/ B8 (25dBm)
- GSM/EDGE: 850/900/1800/1900MHz (32dBm)

#### About WIFI

- Frequency: 2412 – 2472MHZ
- Max. power = 18dbm

#### About BT

- Max. power = 11dBm

#### WEEE



This product must not be disposed of as normal household waste, in accordance with the EU directive for waste electrical and electronic equipment (WEEE – 2012/19/EU). Instead, it should be disposed of by returning it to the point of sale, or to a municipal recycling collection point.