

此页对折后为封面页

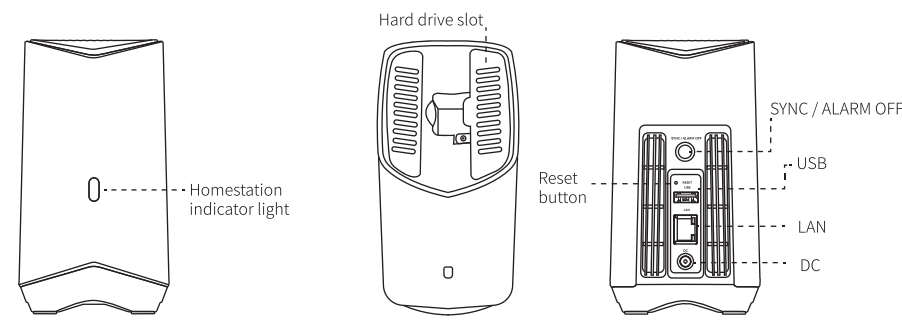
1.Package Including

Baseus Security H1 HomeStation
H1 HomeStation×1 (Model :S1UA00)
Power adapter×1
100M Ethernet cable×1
Metal reset pin×1
Hard drive installation package×1

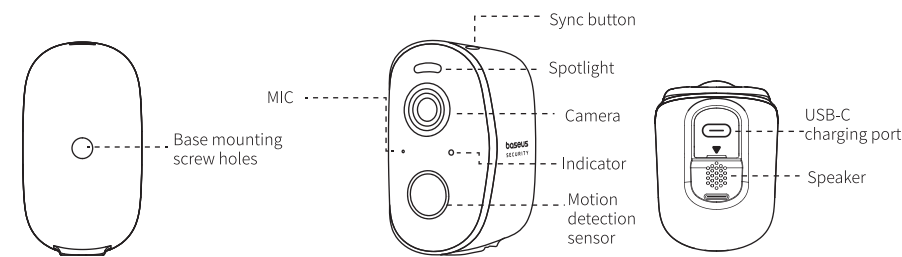
Baseus Security N1 Outdoor Camera
N1 Camera × 2 (Model : S0ST00)
Camera charging cable×1 (USB-A to USB-C)
Camera installation package × 2

2.Product Overview

① H1 HomeStation

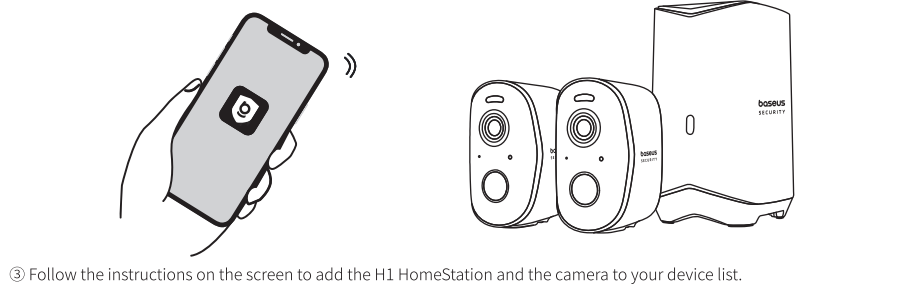
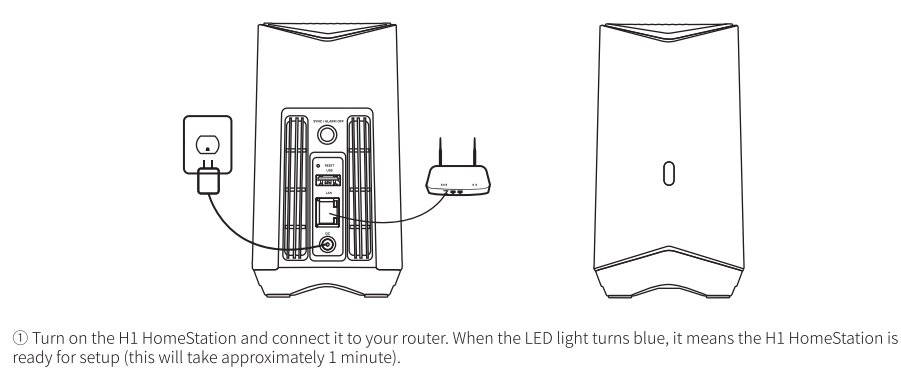


② N1 Camera / N1



01

3.Setup Instructions



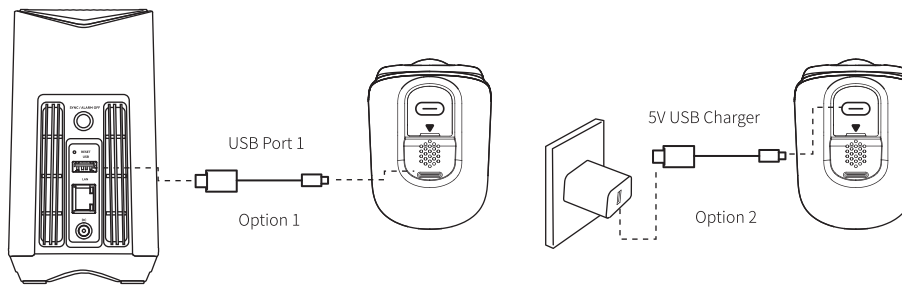
02

4.Camera Charging

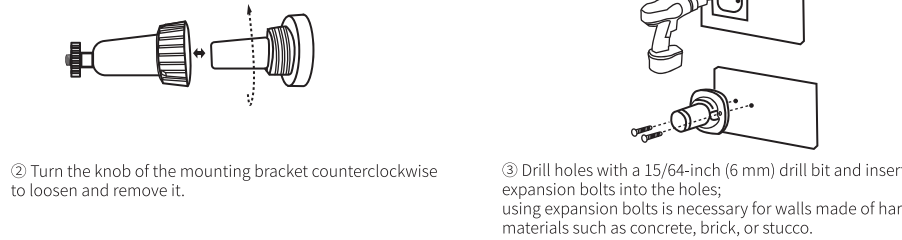
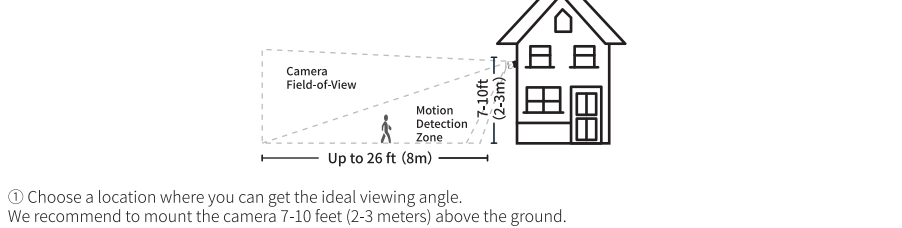
*Please fully charge both cameras before first use. It takes about 5 hours to charge each camera.

Charge Indicator Instructions

- ① Blue light flashes slowly: in charging.
- ② Indicator light goes out: fully charged.



5.Camera Installation



03

6.Expanding Hard Drive (Optional) The H1 HomeStation has 16GB storage built-in, and it supports storage expansion with external hard drives as well.

Prepare your hard drive

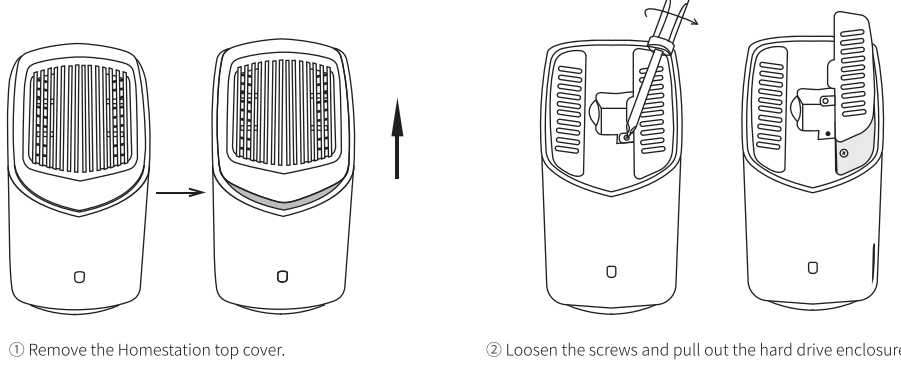
Your hard drive must meet the following requirements:

Type	Mechanical hard drive (HDD) or solid state drive (SSD) with SATA interface.
Size	2.5 inches
Capacity	no limit
Recommending Brands	Western Digital, Seagate, SAMSUNG, Kingston, PNY, Crucial, SanDisk.

*Before adding a hard drive to the H1 HomeStation, please transfer all data on the hard drive to a safe location.

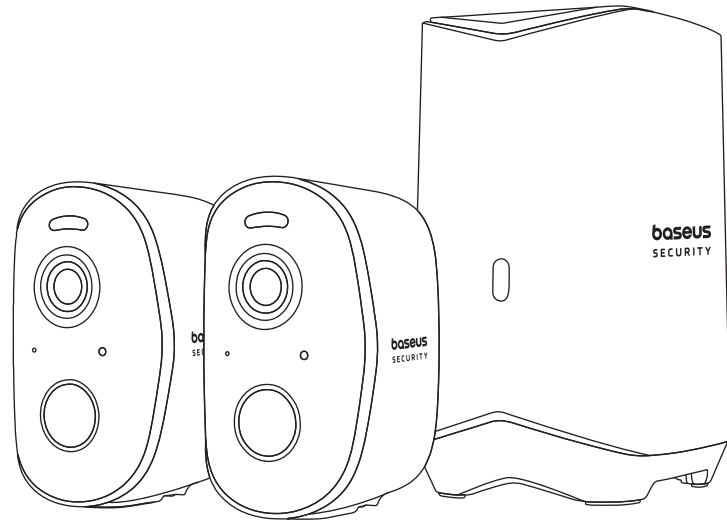
Install your hard drive

*The H1 HomeStation must be turned off when you install or remove the hard drive.



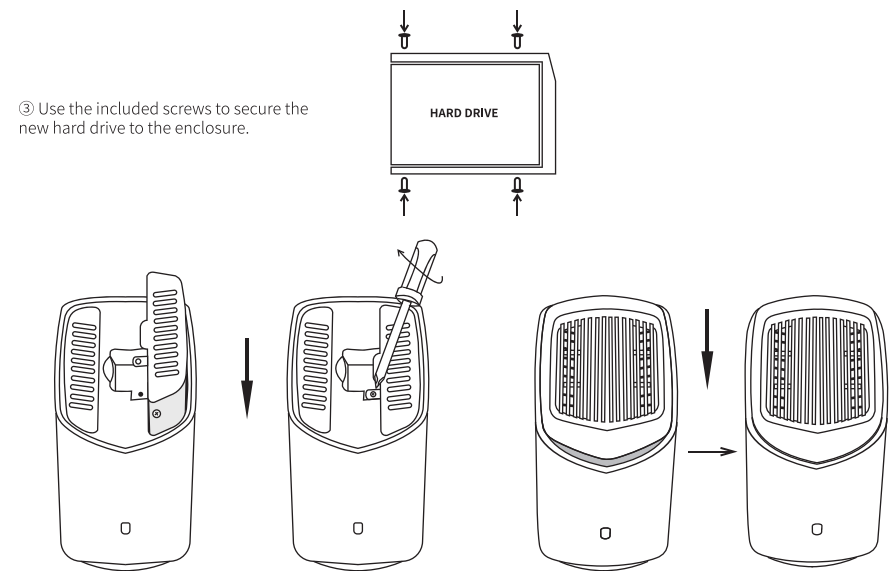
04

baseus
SECURITY



Baseus Security N1 Outdoor Camera

Quick Start Guide



7.Product Specifications

① H1 HomeStation
Input Power: 12V~2A (Max.)
USB-A Output: 5V~2A (Max.)
Ethernet Port: 100Mbps (Max.)

② N1 Camera
Resolution: 2304×1296
Night Vision: color night vision
Input: 5V~2A (Max.)
Waterproof Rating: IP67

The above data are provided by the Baseus Lab; actual use will vary depending on the specific circumstances.

8. Notice

- The device is not a toy.
- Choking Hazard: The product contains (or comes with) small parts, plastic elements, cables and parts that may cause choking

05



This product complies with the radio interference requirements of the European Community.

Declaration of Conformity

Shenzhen Baseus Technology Co., Ltd. Declares that the product is in compliance with Directive 2014/53/eu. The full text of the EU declaration of conformity is available at the following internet address:
<https://eu.baseus.com/pages/euro-compliance>.

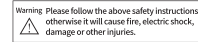
RF exposure notice:

The Maximum Permissible Exposure(MPE)level has been calculated based on a distance of d=20cm between the device and the human body. To maintain compliance with RF exposure requirement, use product that maintain a 20cm distance between the device and human body.
Frequency bands and power are as below:

Model	Function	Operation Frequency	Max. RF Power
S0ST00	Wi-Fi	2412-2472MHz	EIRP 18.07dBm
S1UA00	Wi-Fi	2412-2472MHz	EIRP 17.26dBm

10.Customer Service

Warranty: 24-month limited warranty
United States Tel: +1 (800) 2208056
Customer Service: support@baseusecurity.com



Manufacturer: Shenzhen Baseus Technology Co., Ltd.
Add: 2nd Floor, Building 8, Baseus Intelligence Park, No.2008, Xuegang Rd,
Gangtuo Community, Bantian Street, Longgang District, Shenzhen
Hotline: +1 800 220 8056 Website: <https://www.baseus.com>

PBS173Z-POA0
1100021002
Designed by Baseus
Made in China

hazard. Keep your camera and its accessories out of the reach of samll children. Consult a physician immediately if small parts are swallowed.

- Strangulation Hazard: Children get strangled in cords. Keep cords out of the reach of chldren(more than 3ft/0.9m away).
- The suitable temperature for S0ST00 and accessories is - 20°C to 50°C.(Charging temperature is 0°C to 40°C); The suitable temperature for S1UA00 and accessories is - 10°C to 40°C;
- When charging, please place the device in anenvironment that has a normal roomtemperature and good ventilation.
- Unless specifically indicated that it is safe to do so in the user guide or instruction manual, do not use this device in an environment that exceeds the recommended low or high temperature.
- Unless specifically indicated that it is safe to do so in the user guide or instruction manual, avoid exposing your device to direct sunshine or excessively wet environments.
- For pluggable equipment, the socket-outlet shall be easily accessible.
- Use only the adapter provided by the manufacturer. Using unauthorized adapters may cause danger and violate the authorized use of the device or the warranty article.

CAUTION: RISK OF EXPLOSION IF BATTERY IS REPLACED BY AN INCORRECT TYPE. DISPOSES OF USED BATTERIES ACCORDING TO THE INSTRUCTIONS.

9.Safety

This symbol indicates that this product shall not be treated as household waste. Instead, it shall be handed over to the applicable collection point for the recycling of electrical and electronic equipment. Follow local rules and never dispose of the product with normal household waste.

FCC Statement

This device complies with Part 15 of the FCC Rules.Operation is subject to the following two conditions: (1) this device may not cause harmful interference, and (2) this device must accept any interference received, including interference that may cause undesired operation.

Any Changes or modifications not expressly approved by the party responsible for compliance could void the user's authority to operate the equipment.

This equipment has been tested and found to comply with the limits for a Class B digital device, pursuant to part 15 of the FCC Rules. These limits are designed to provide reasonable protection against harmful interference in a residential installation. This equipment generates, uses and can radiate radio frequency energy and, if not installed and used in accordance with the instructions, may cause harmful interference to radio communications. However, there is no guarantee that interference will not occur in a particular installation. If this equipment does cause harmful interference to radio or television reception, which can be determined by turning the equipment off and on, the user is encouraged to try to correct the interference by one or more of the following measures:
-- Reorient or relocate the receiving antenna.
-- Increase the separation between the equipment and receiver.
-- Connect the equipment into an outlet on a circuit different from that to which the receiver is connected.
-- Consult the dealer or an experienced radio/TV technician for help.

FCC Radio Frequency Exposure Statement

The device has been evaluated to meet general RF exposure requirement. The device can be used in fixed/mobile exposure condition. The min separation distance is 20cm.

The following importer is the responsible party (for FCC matters only)
Company Name: BASEUS TECHNOLOGY (US) INC
Address: 421 S BROOKHURST ST SUITE 1312
ANAHEIM, CA 92804
Telephone: +6-145412699

06