

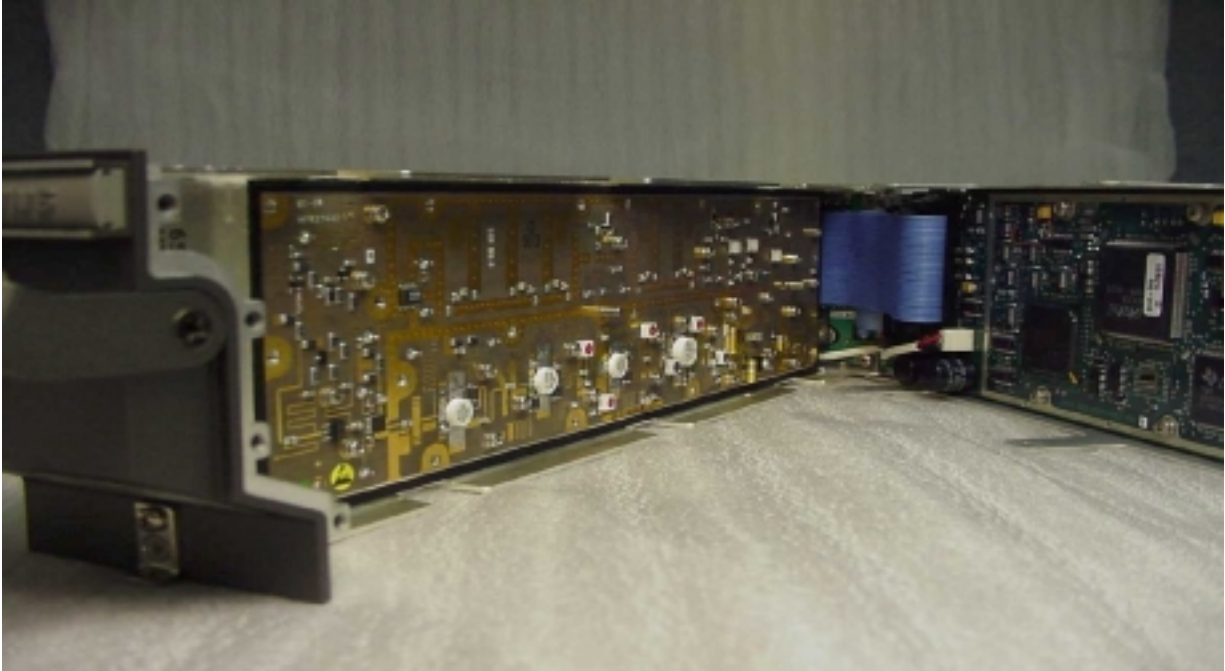
## **Exhibit I-Internal Pictures**



**The DSP/Power Supply side of the DME-4000 with the unit cover removed.**



**The DSP/Power Supply side is opened and the Radio Frequency Transmitter and Receiver shield is exposed.**



**The Transmitter/Receiver shield is removed and the Transmitter/Receiver board is exposed.**



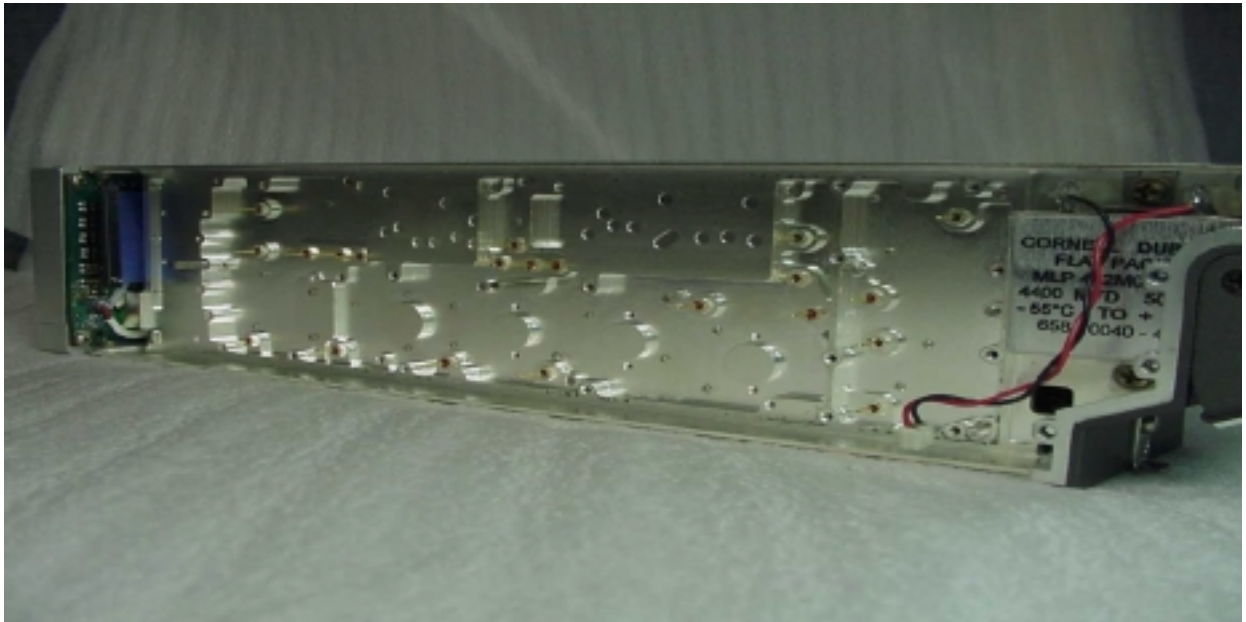
**The DME-4000 Modulator/IF/Synthesizer side of the unit with the unit cover removed and the Modulator/IF/Synthesizer cover exposed. Partial view of the storage capacitor behind the front panel.**



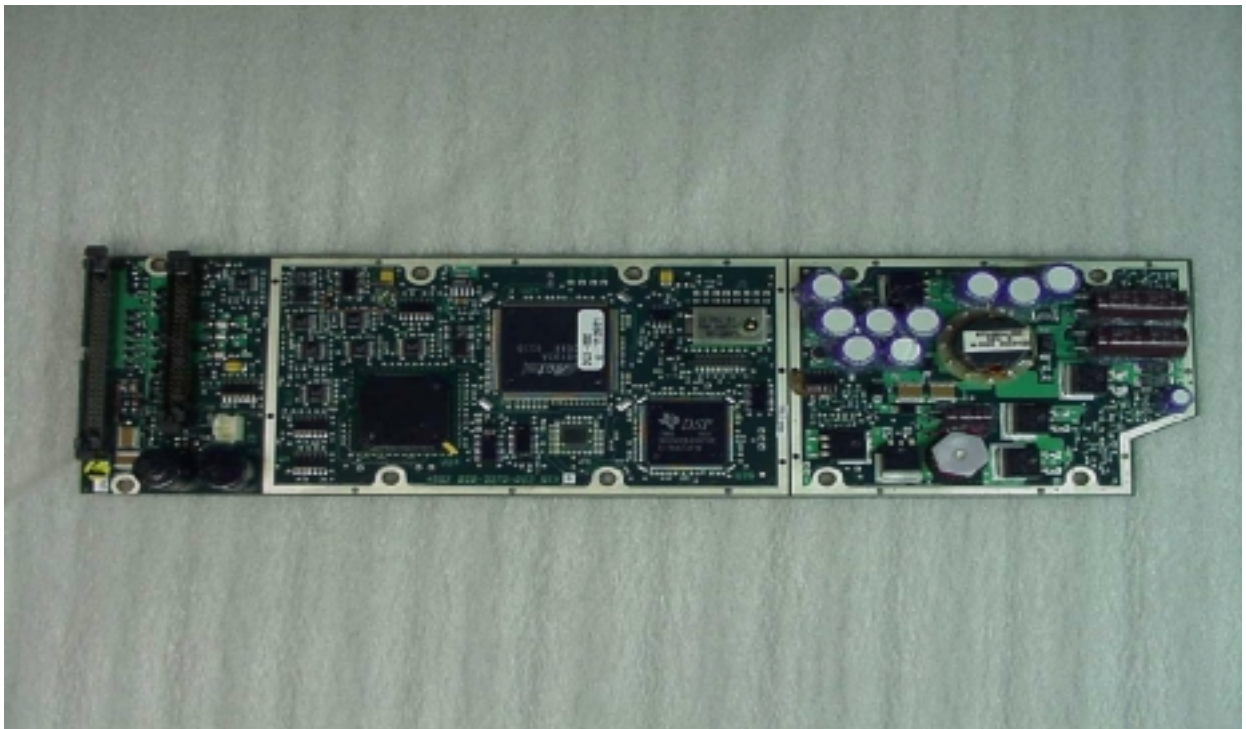
**The DME4000 Modulator/IF/Synthesizer cover removed. The shield and the Modulator section of Modulator/IF/Synthesizer board are exposed. The IF and the Synthesizer section of the board are covered by the shield.**



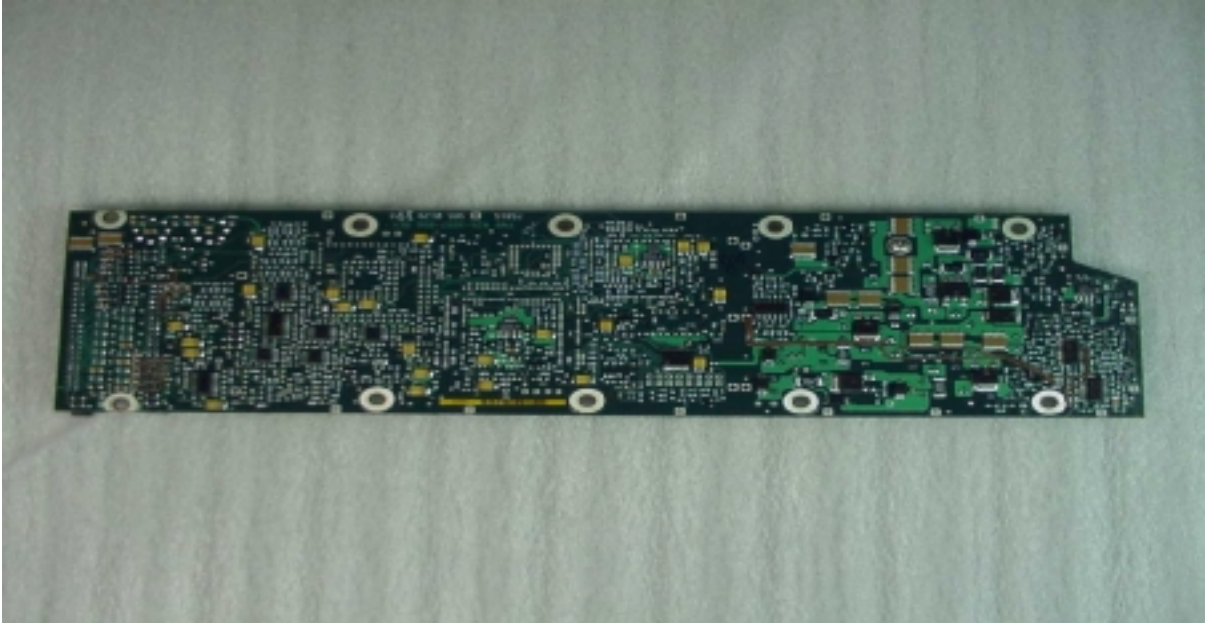
**The DME4000 Modulator/IF/Synthesizer board with the shield removed.**



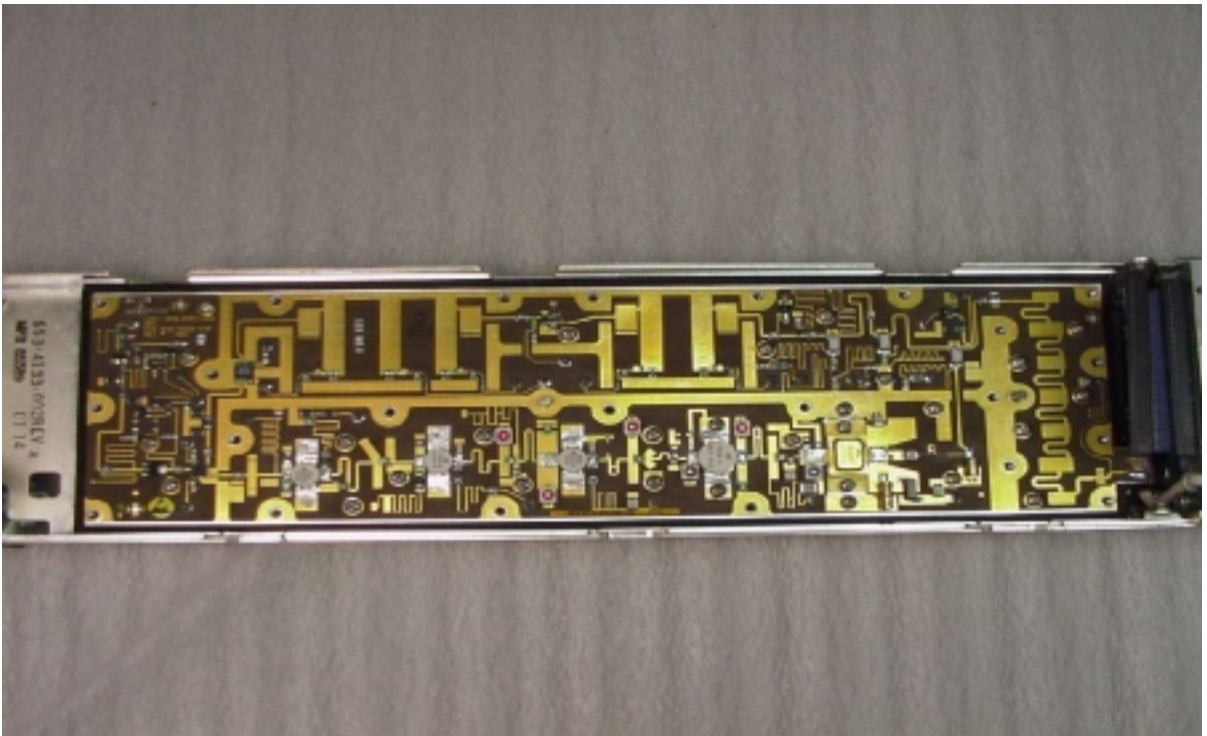
**The chassis side of the Modulator/IF/Synthesizer, both the shield and the cover are removed.**



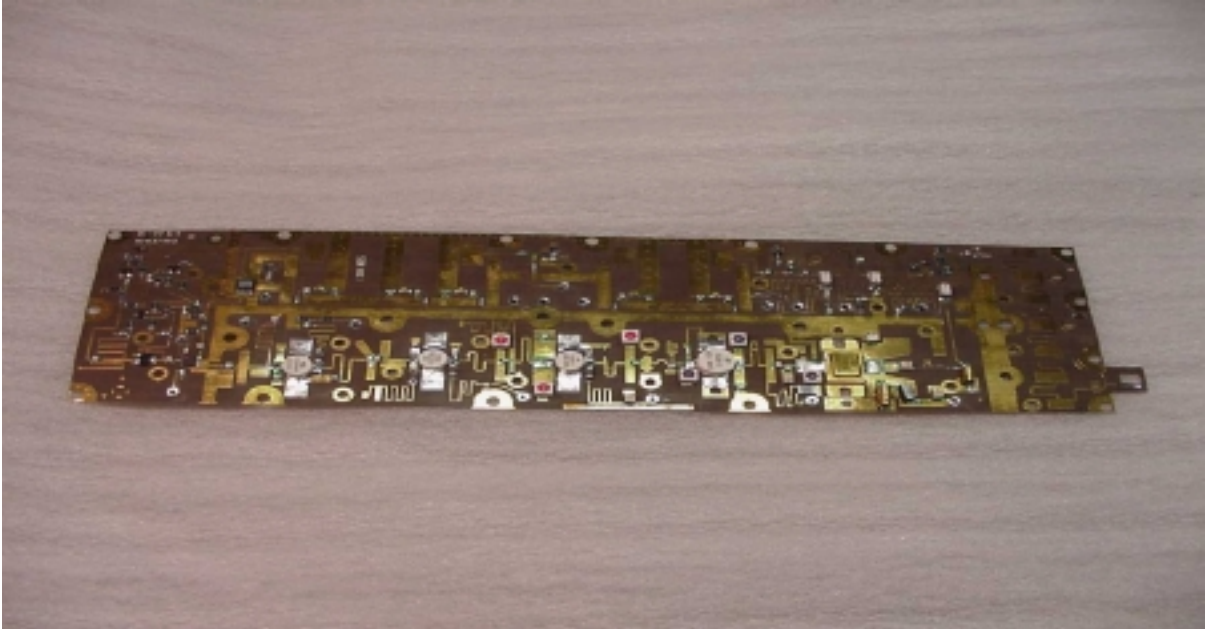
**Top side view of the DSP/Power Supply board.**



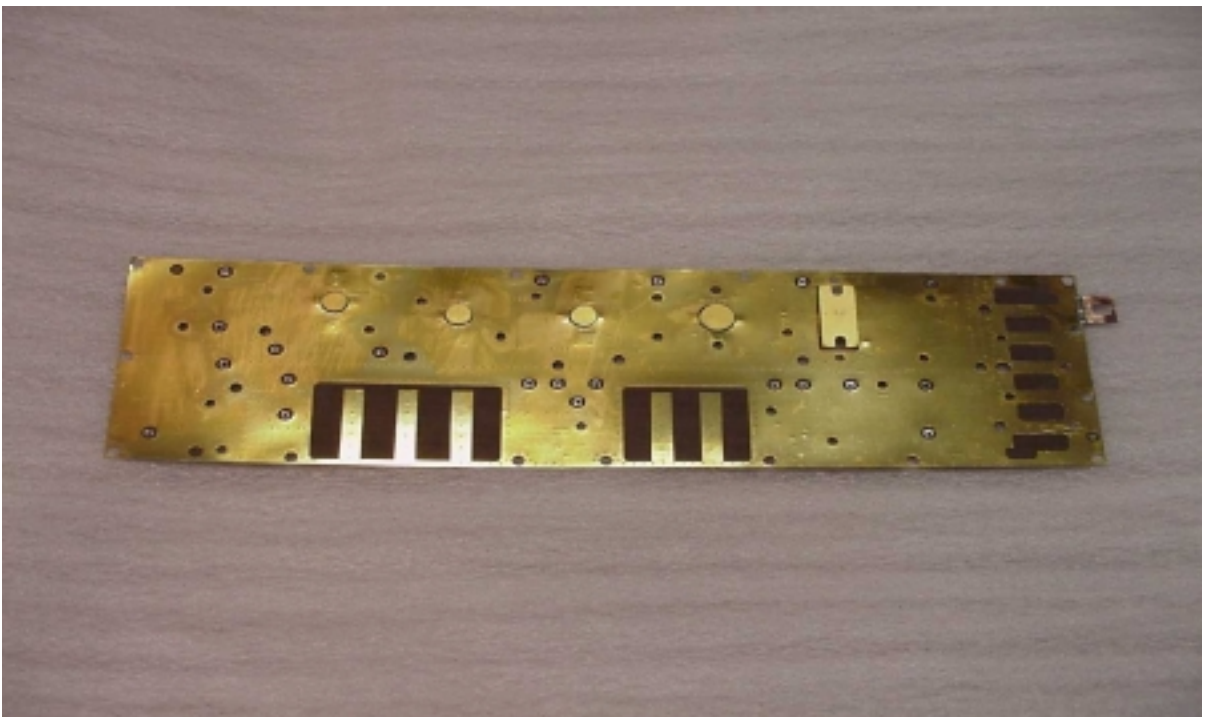
**Bottom side view of the DSP/Power Supply board.**



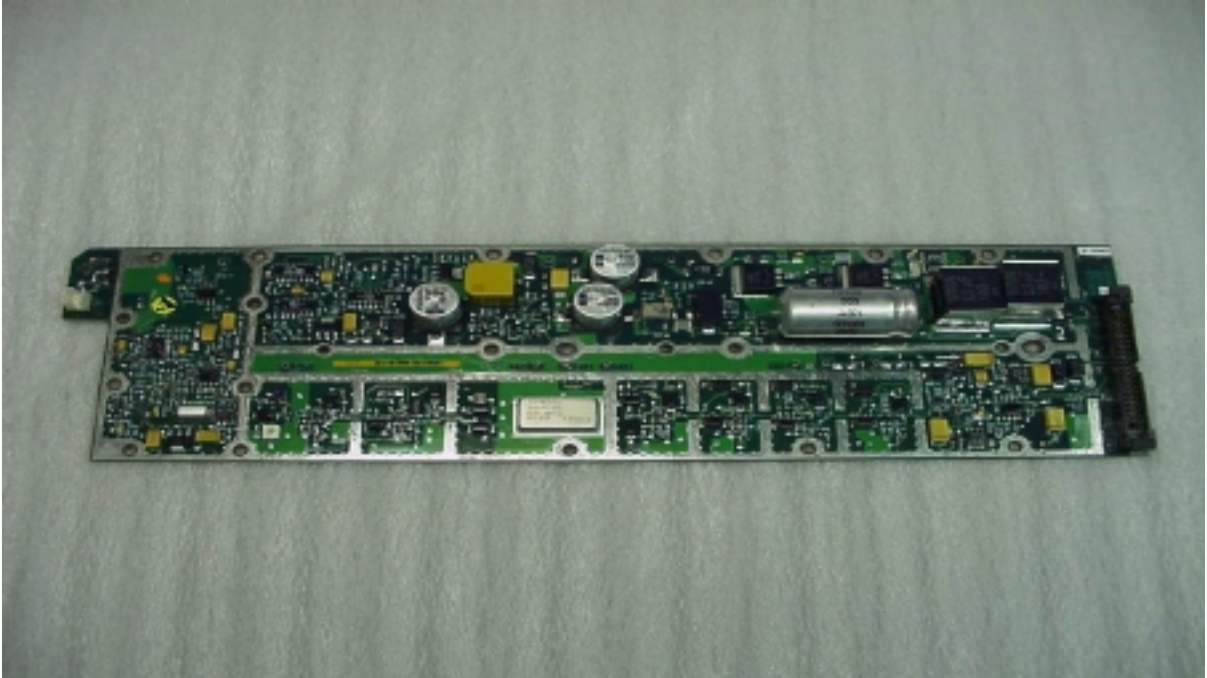
**The top side view of the RF Transmitter/Receiver in the chassis.**



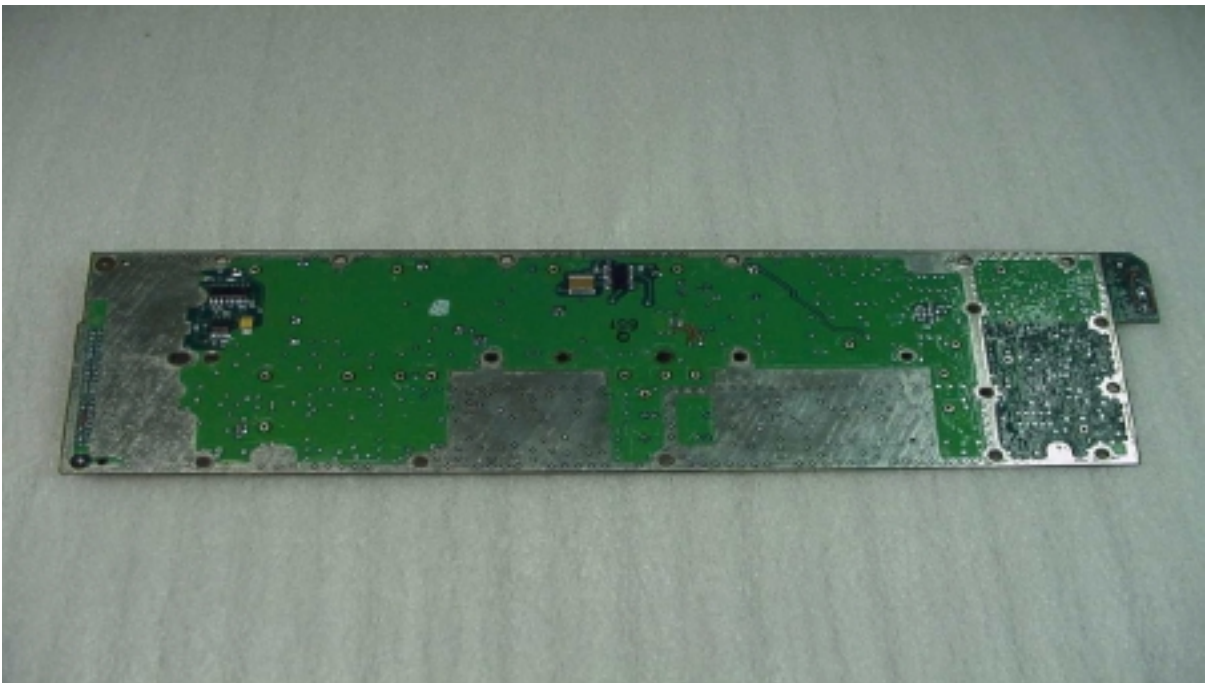
**The top side view of the Transmitter/Receiver board**



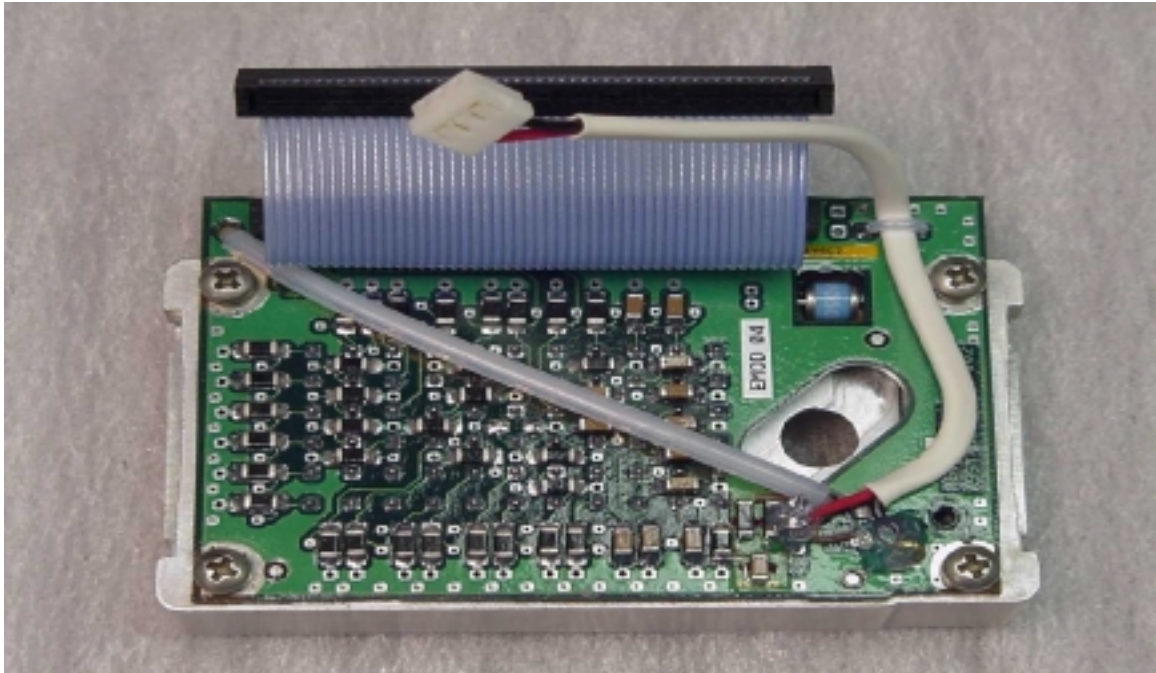
**The bottom side of the RF Transmitter/Receiver board**



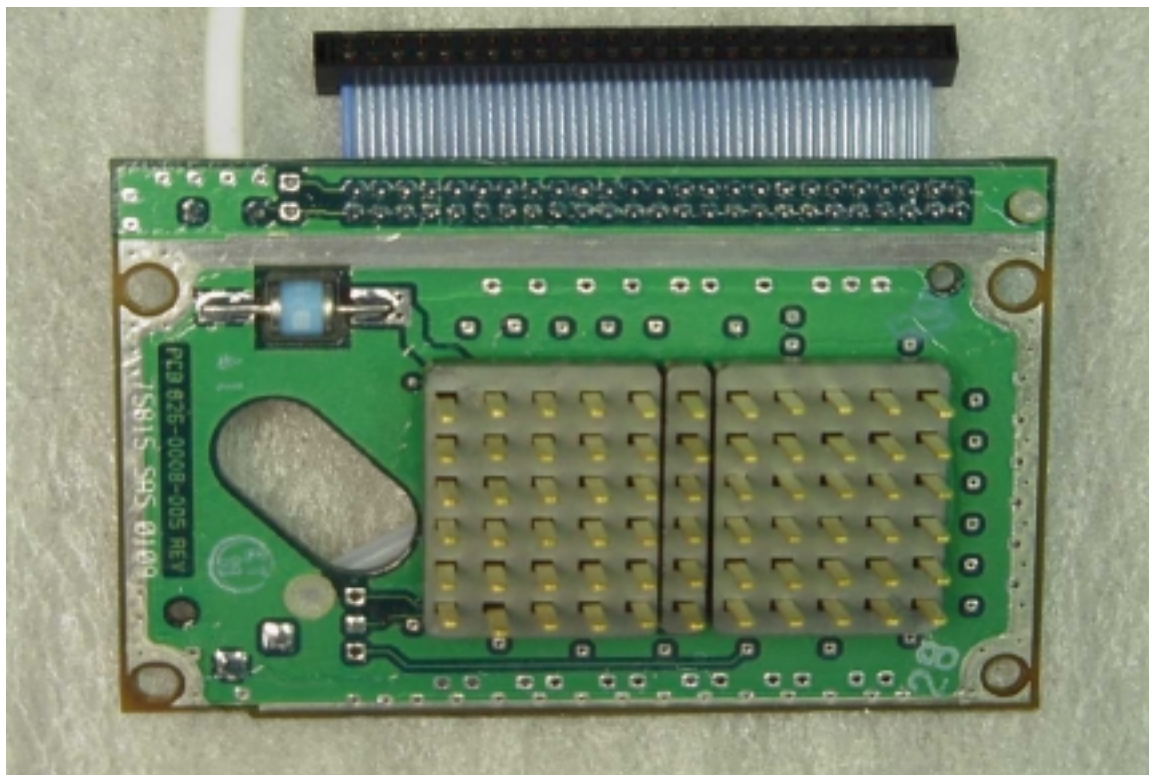
**The top side of the Modulator/IF/Synthesizer board**



**The bottom side of the Modulator/IF/Synthesizer board**



Top view of the rear interconnect



Bottom side view of the rear interconnect