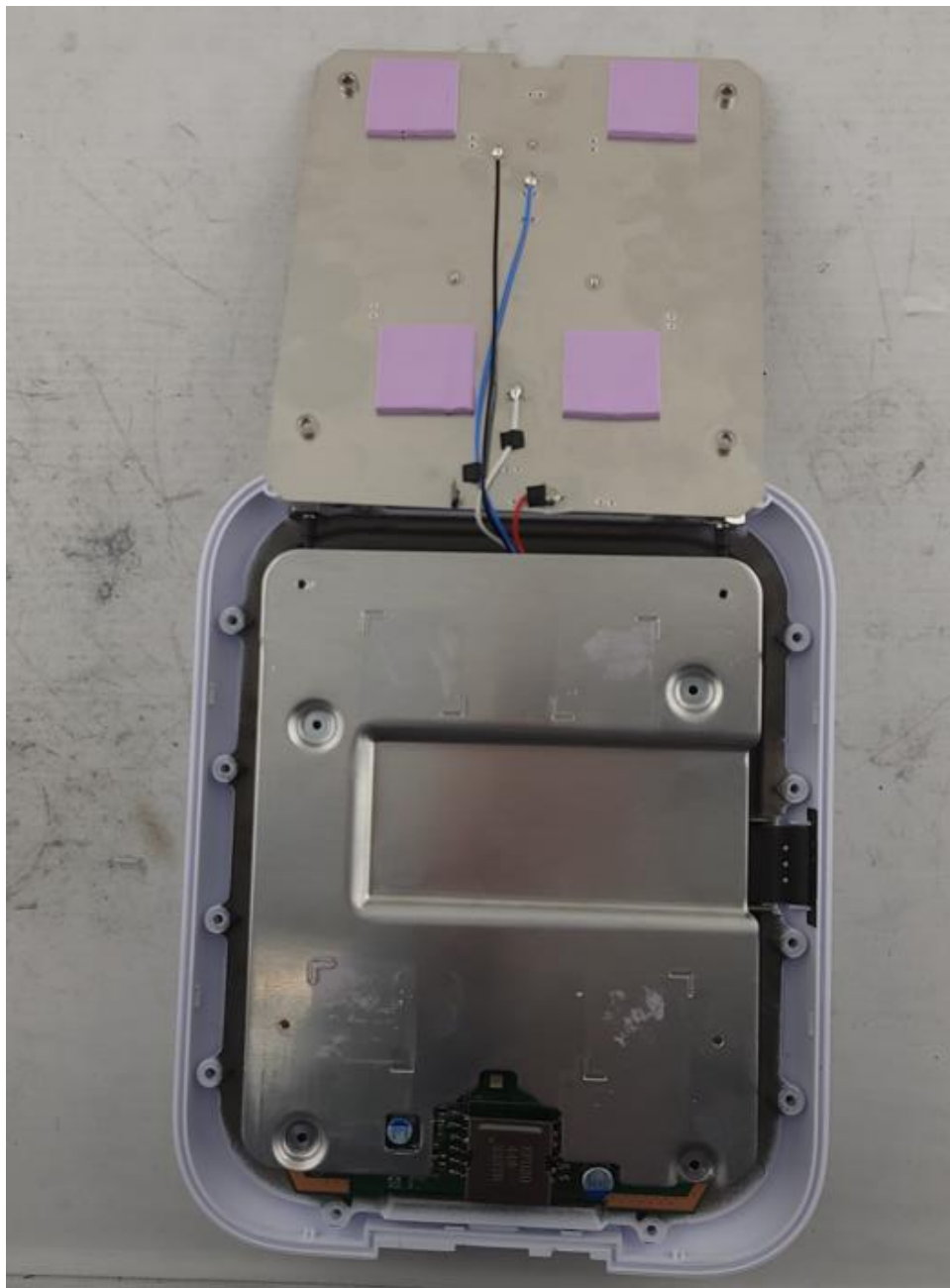
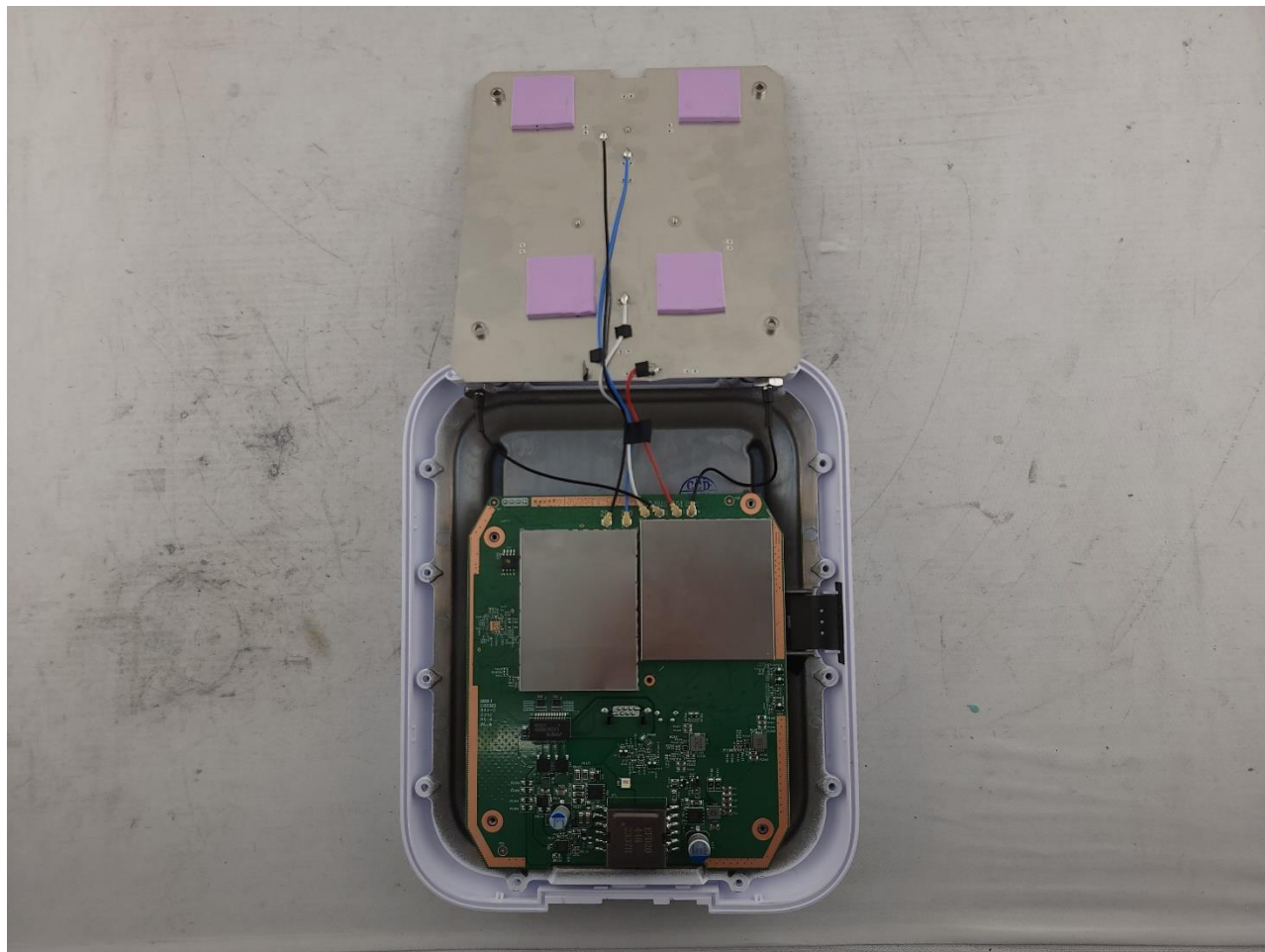


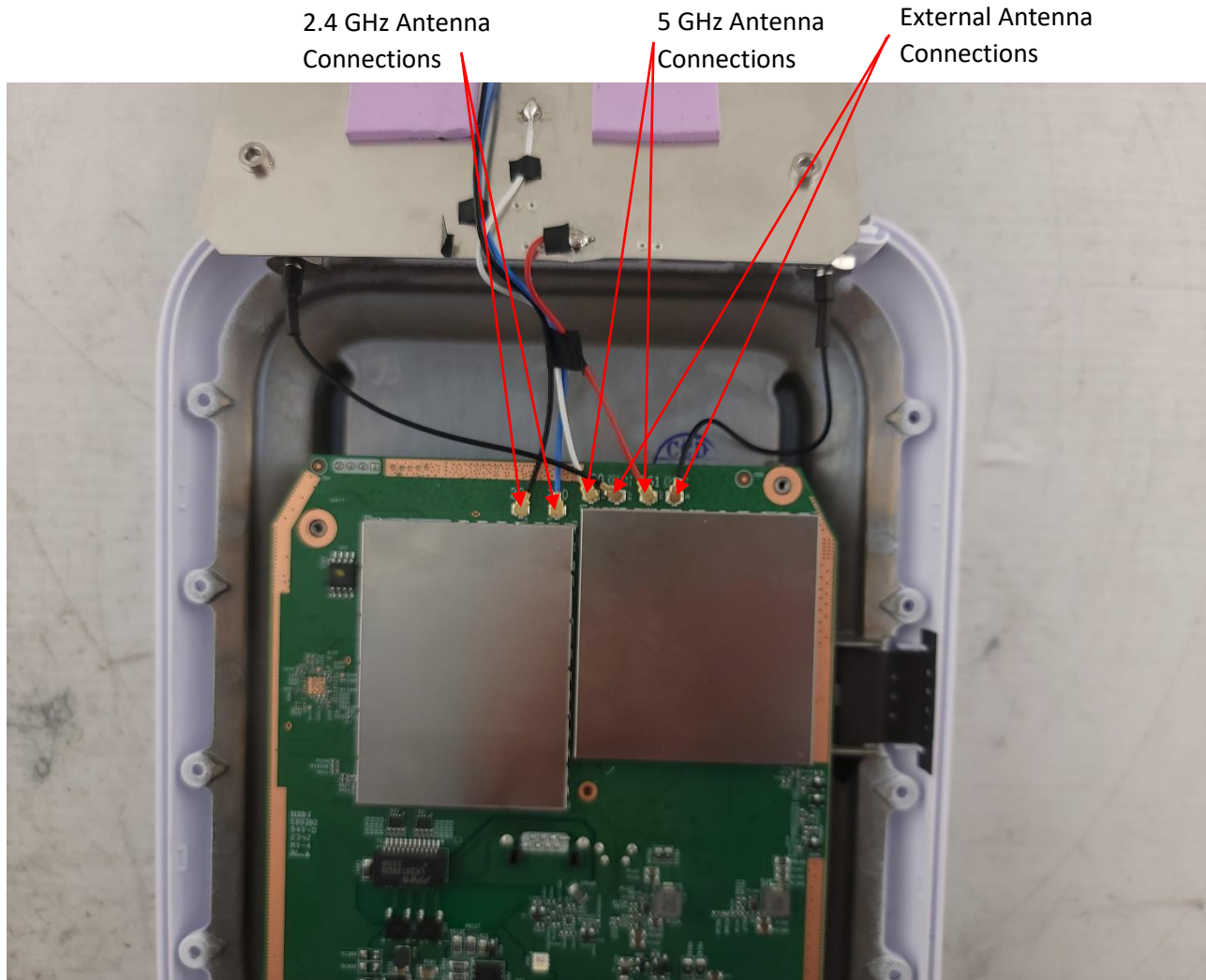
Photograph 1: Internal View Front Cover Off



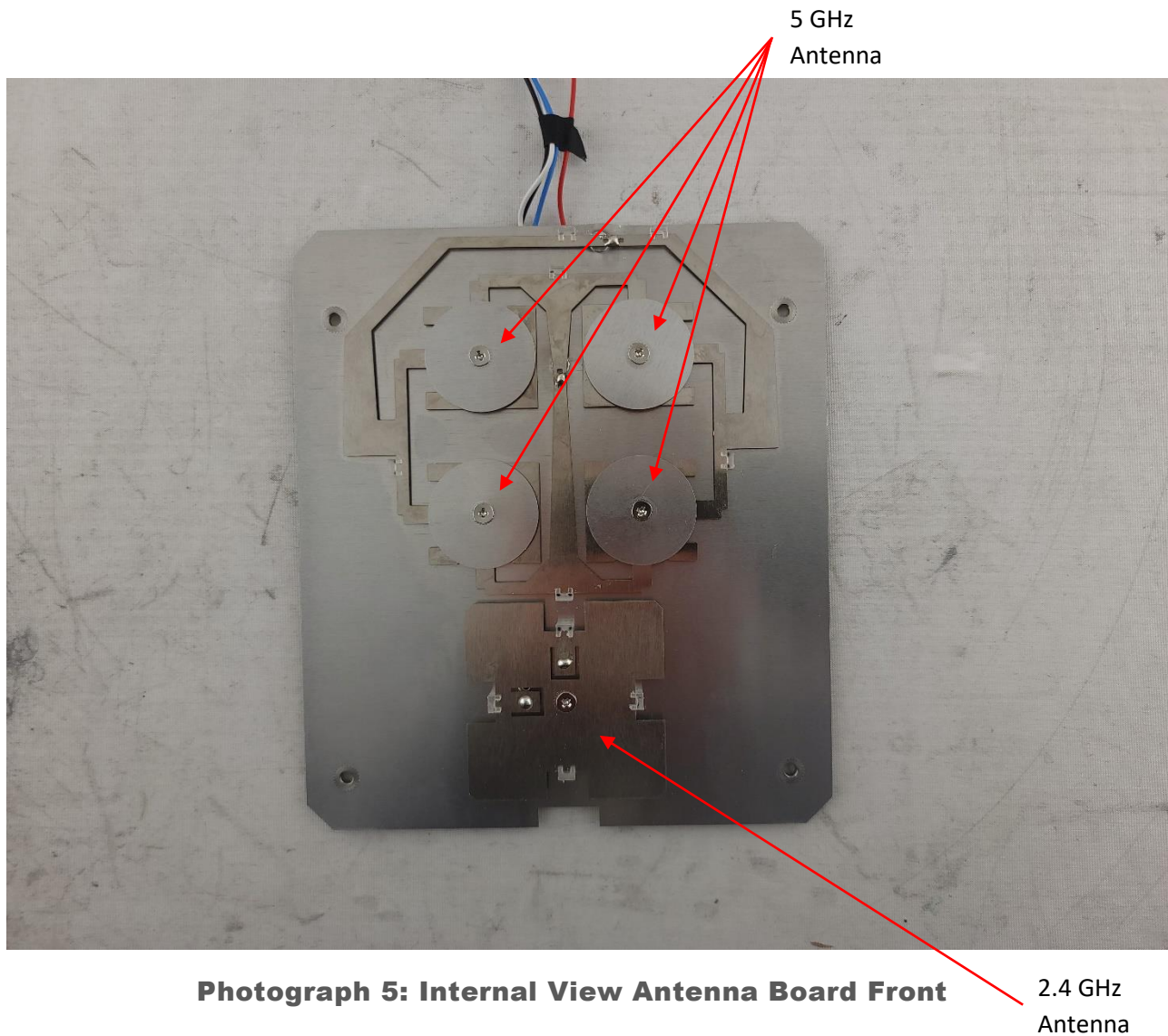
Photograph 2: Internal View Antenna Board Off

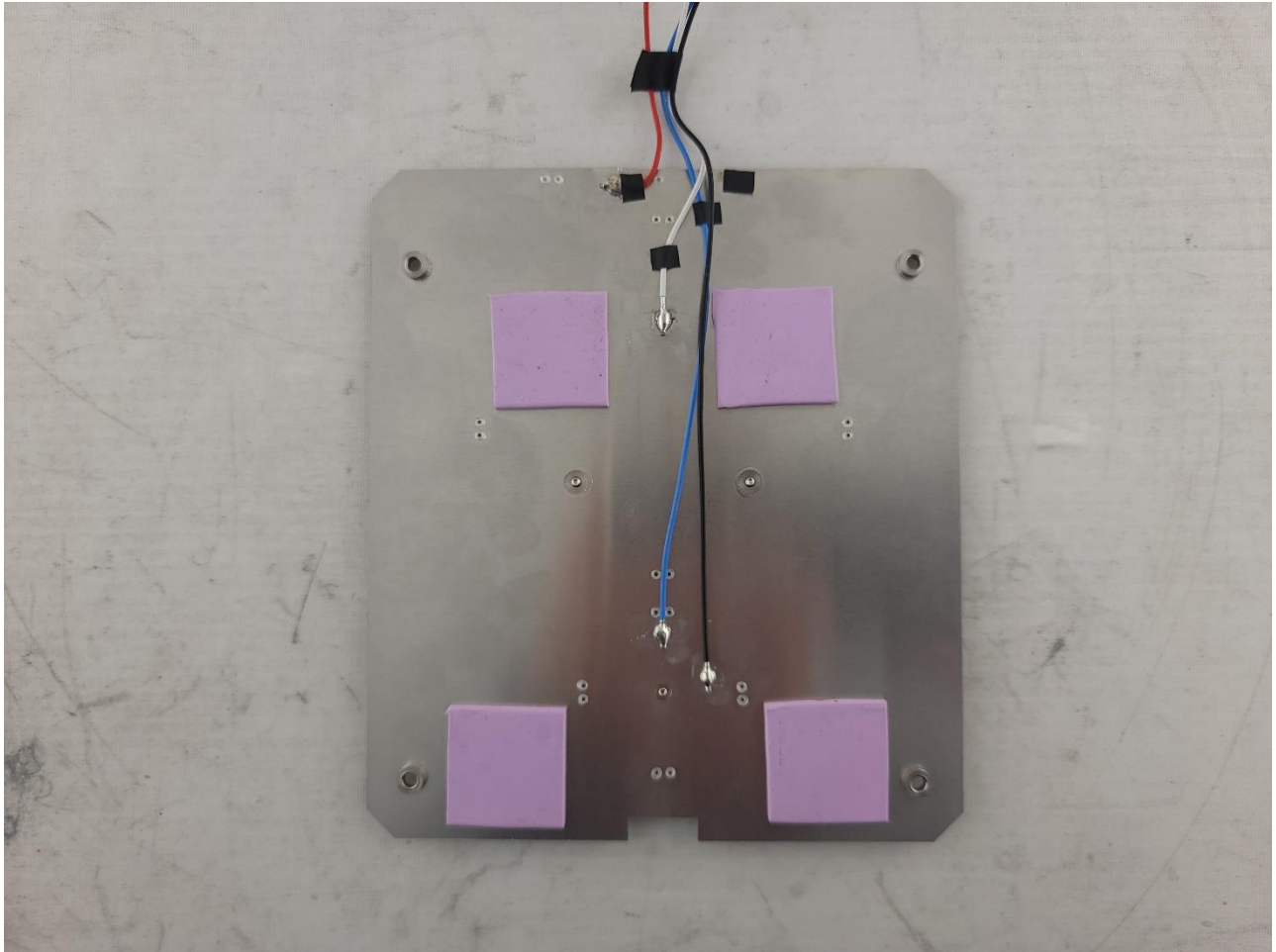


Photograph 3: Internal View Metal Mount And Antenna Board Off

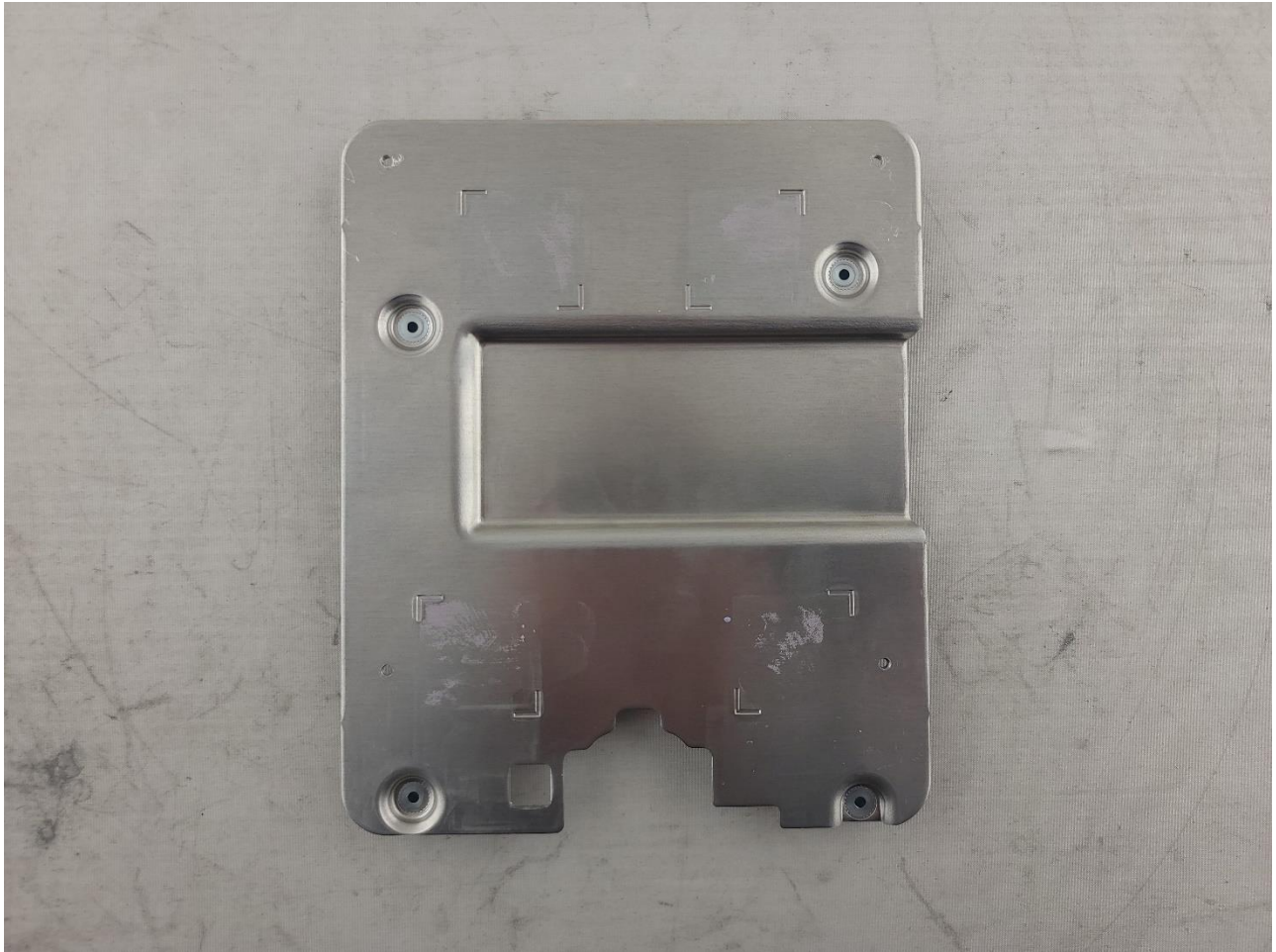


Photograph 4: Internal View Close Up of Antenna Connectors

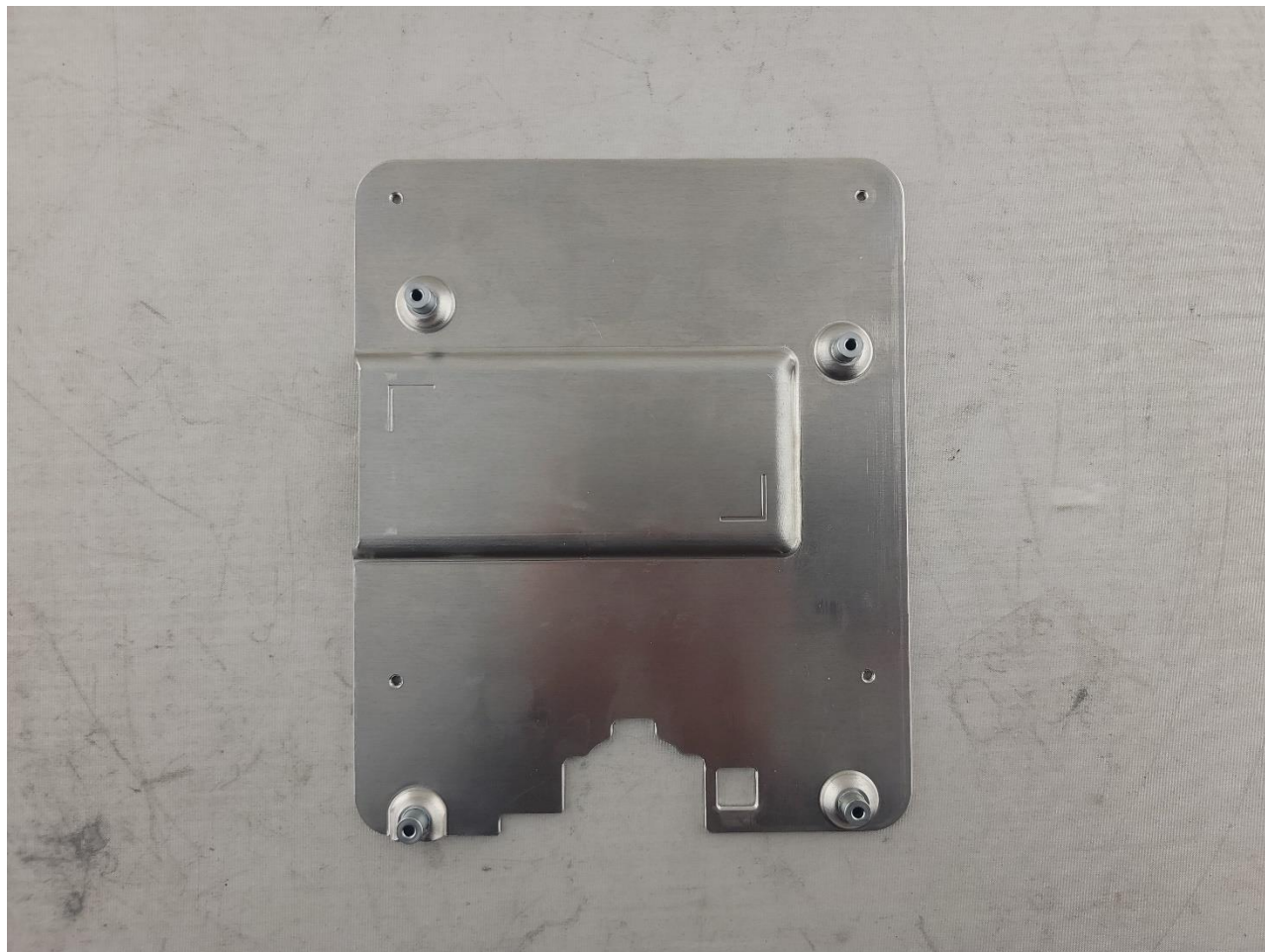




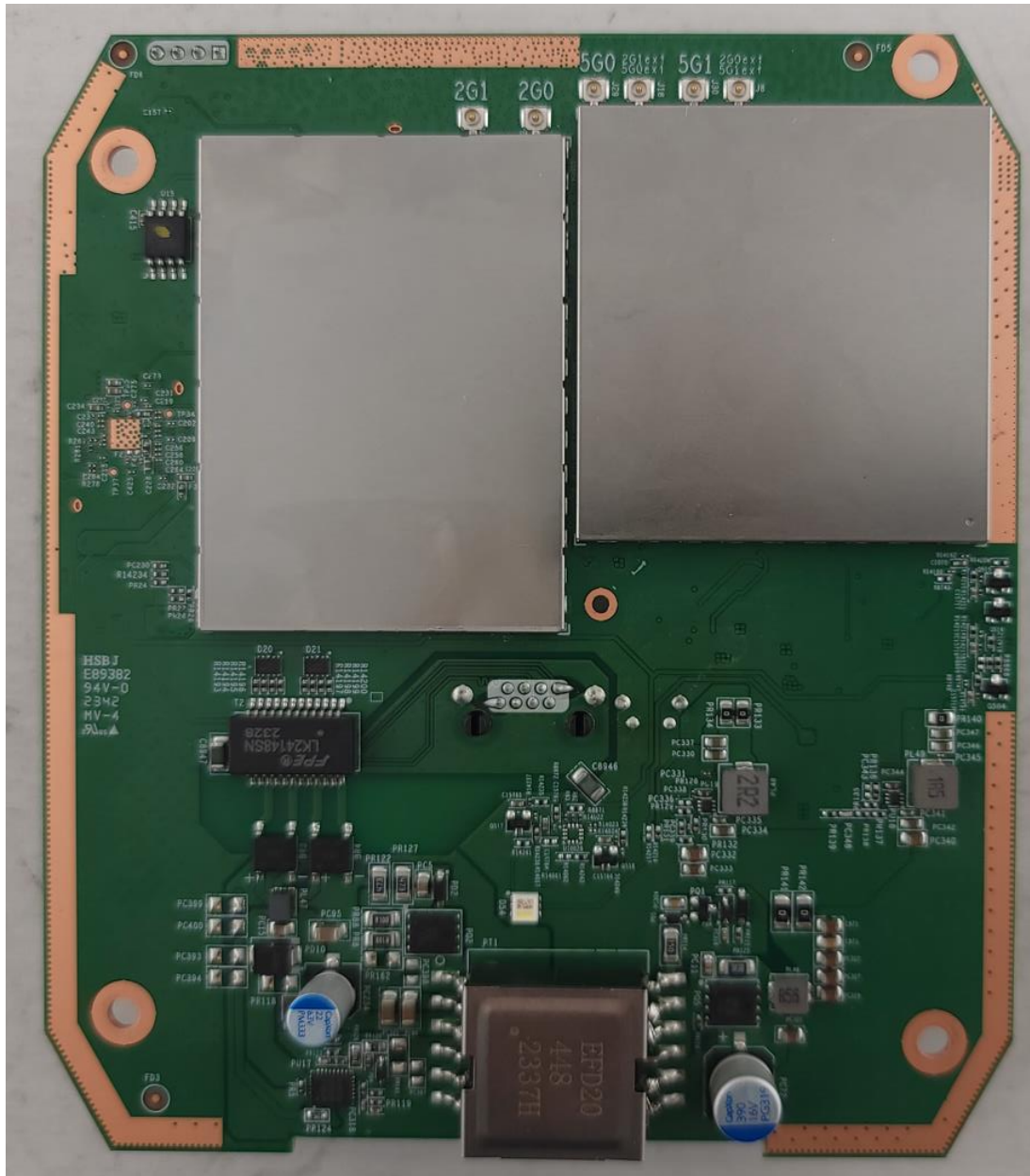
Photograph 6: Internal View Antenna Board Back



Photograph 7: Internal View Metal Antenna Board Mount Front



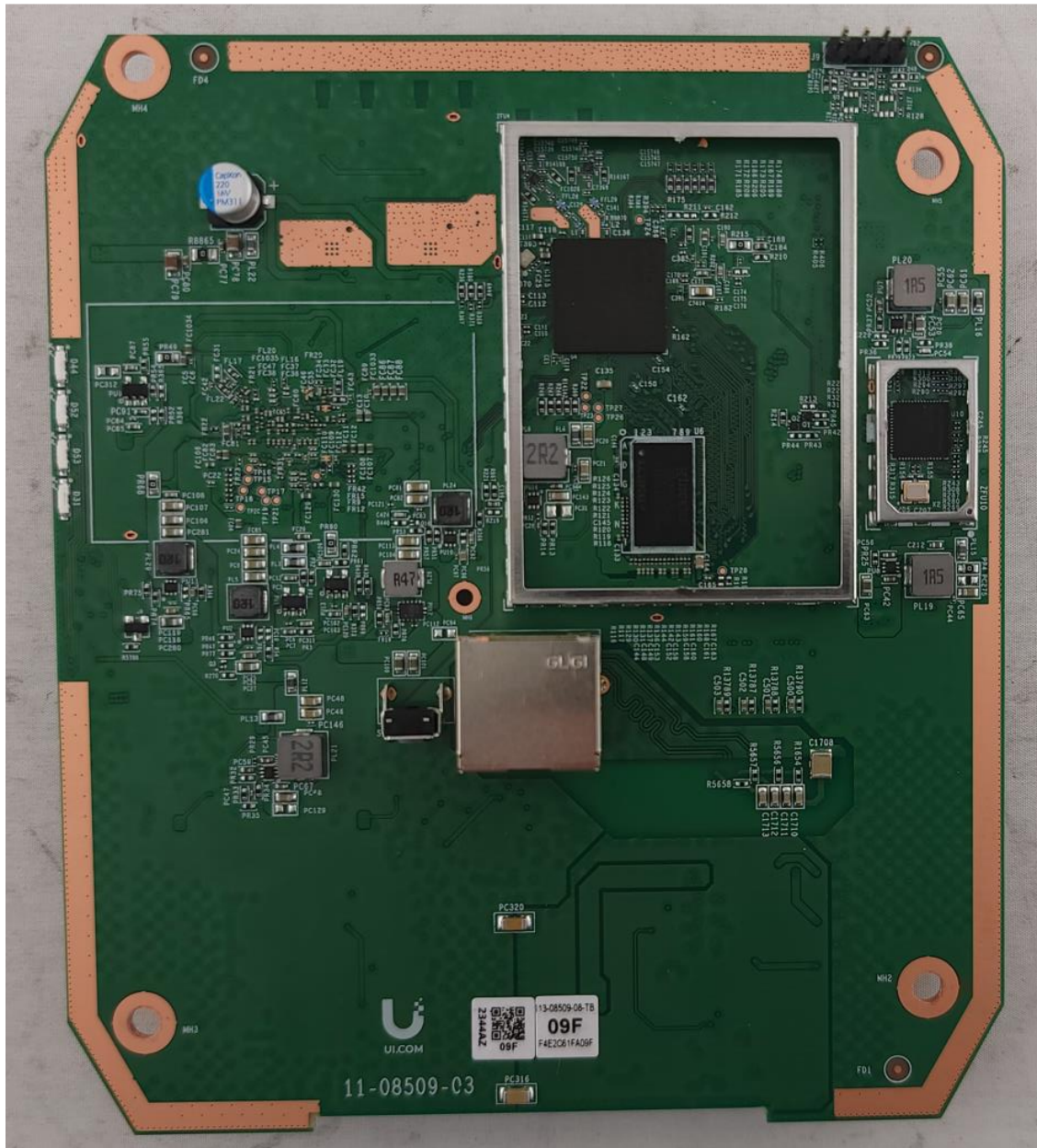
Photograph 8: Internal View Metal Antenna Board Mount Back



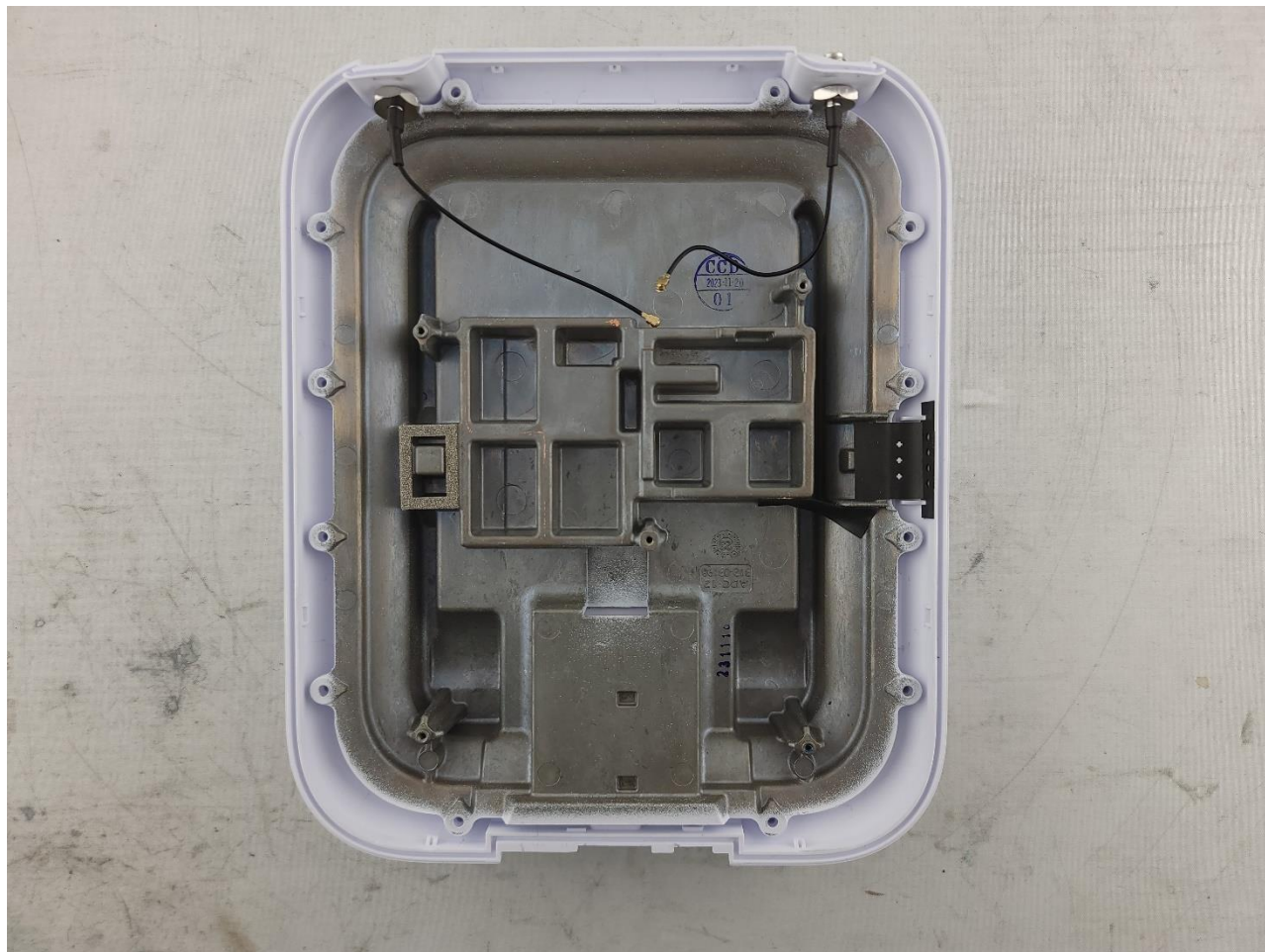
Photograph 9: PCB Front with Cans On







Photograph 12: PCB Back with Cans Off



Photograph 13: Bottom Of DUT all Boards Out