

English

## User Manual

### Specification

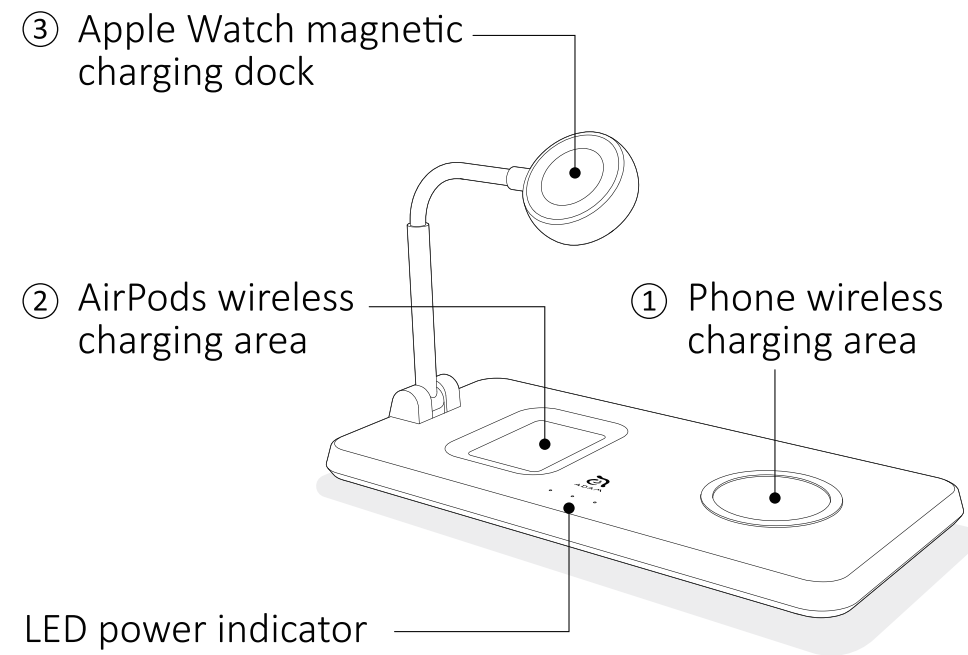
Product Name:  
3-in-1 Wireless Charging Station

- ① Wireless Charger:  
5V==1A, 5V==1.5A, 9V==1.1A, 10W max.
- ② Wireless Charger:  
5V==1A, 5W max.
- ③ Apple Watch Charger:  
5V==400mA, 2W max.

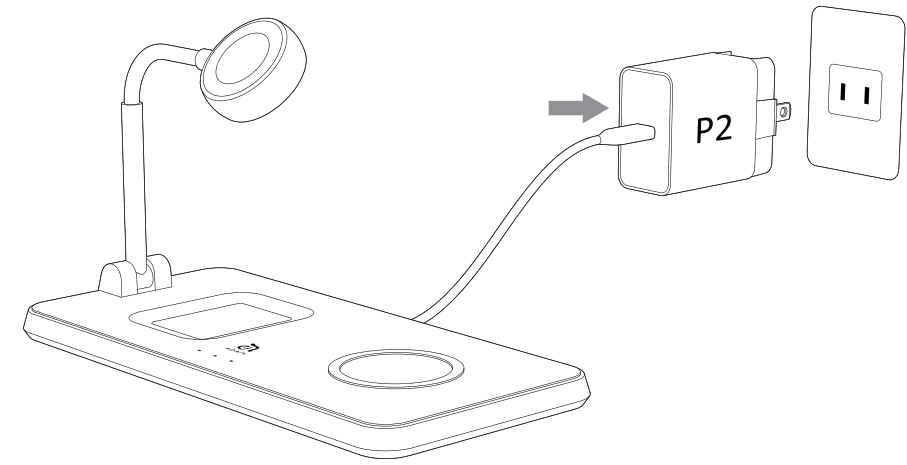
Compatibility:  
Qi Compatible iPhone / Apple Watch  
/ Airpods Wireless Charging Case

Size: 192 x 96 x 22.6 mm    Weight: 271 g  
Warranty: 3 years

### Product Introduction



### Instructions



⚡ W17A has to be used with OMNIA P2  
or PD 24W adapters.

### FCC STATEMENT :

This device complies with Part 15 of the FCC Rules.  
Operation is subject to the following two conditions:  
(1)This device may not cause harmful interference, and  
(2)This device must accept any interference received, including  
interference that may cause undesired operation.  
Warning: Changes or modifications not expressly approved by  
the party responsible for compliance could void the user's  
authority to operate the equipment.

NOTE: This equipment has been tested and found to comply  
with the limits for a Class B digital device, pursuant to Part 15  
of the FCC Rules. These limits are designed to provide  
reasonable protection against harmful interference in a  
residential installation. This equipment generates uses and can  
radiate radio frequency energy and, if not installed and used in  
accordance with the instructions, may cause harmful  
interference to radio communications. However, there is no  
guarantee that interference will not occur in a particular  
installation. If this equipment does cause harmful interference  
to radio or television reception, which can be determined by  
turning the equipment off and on, the user is encouraged to  
try to correct the interference by one or more of the following  
measures:

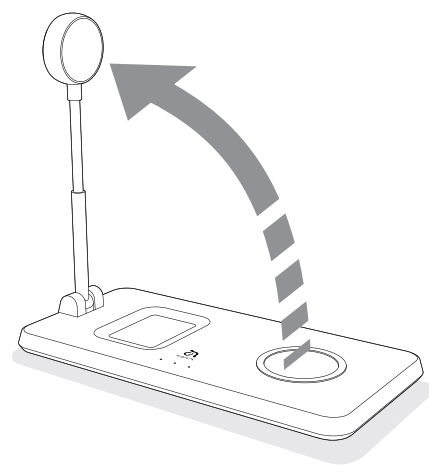
Reorient or relocate the receiving antenna.  
Increase the separation between the equipment and receiver.  
Connect the equipment into an outlet on a circuit different  
from that to which the receiver is connected.  
Consult the dealer or an experienced radio/TV technician for  
help.

### FCC Radiation Exposure Statement:

This equipment complies with FCC radiation exposure limits  
set forth for an uncontrolled environment. This equipment  
should be installed and operated with minimum distance  
20cm between the radiator & your body.

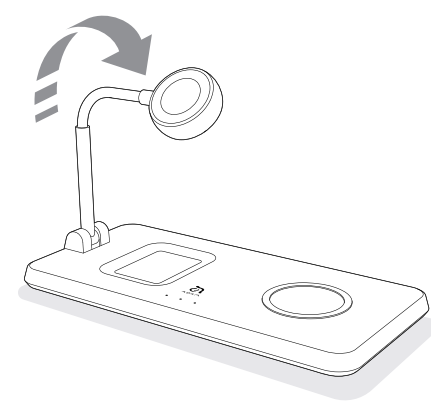
### How to use

Step 1



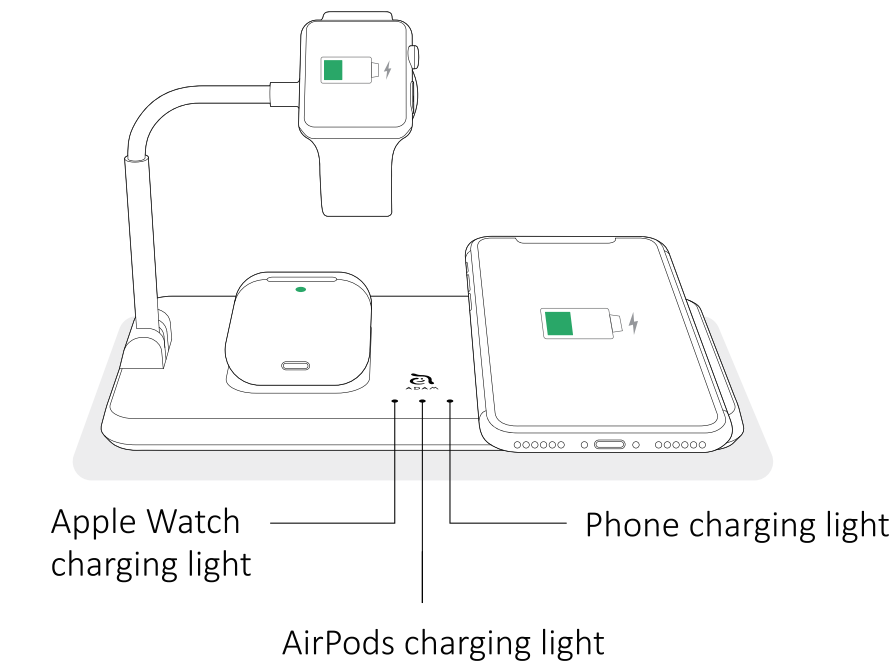
Mount the  
Apple Watch charger

Step 2



Fine-tune the  
adjustable neck

### Charging Light Indicator



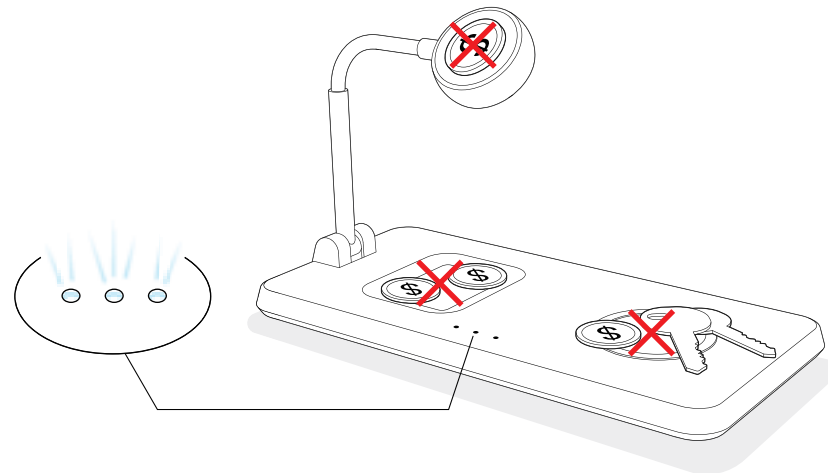
Apple Watch  
charging light

AirPods charging light

Phone charging light

### FOD (Foreign Object Detection)

☀ The light blinks when a metal foreign object are  
detected on the wireless charger.



- ⚠ Do not place any credit card on charging pad  
o prevent damage or demagnetization.
- ⚠ Please remove all metal and magnetic objects  
from the back of your phone prior to charging.

### Caution

- ⚠ To avoid any damage to wireless charger  
please check the output voltage of the  
power source is suitable for the charger
- ⚠ Do not use or store in damp, or high  
temperature environment.
- ⚠ Do not drop or shake.