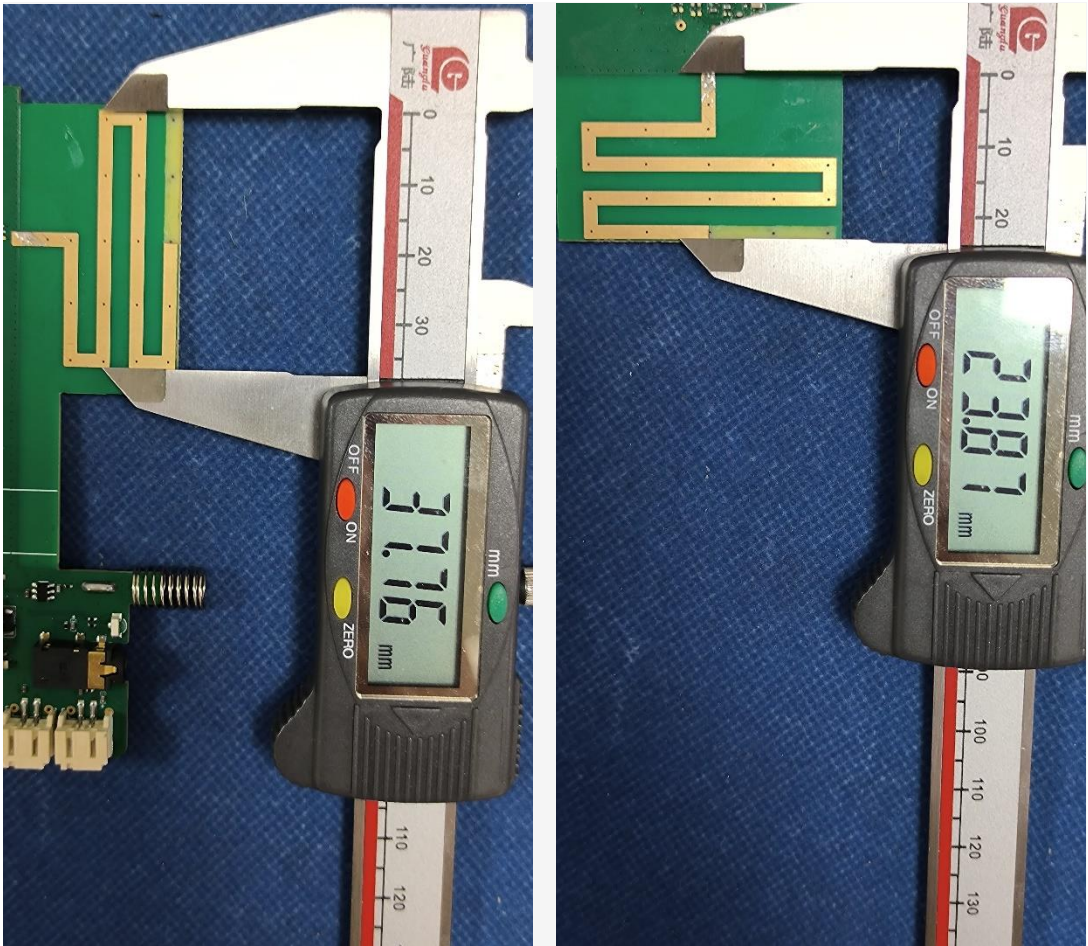


# 1. Antenna Description:

Antenna type	PCB antenna
Model	FB2ULU
Frequency range	919.303MHz-923.303MHz
Manufacturer	UBITECH LIMITED
Address	Unit 12, 7F Block A, Hi-Tech Industrial Centre 5-21 Pak Tin Par Street, Tsuen Wan, NT, Hong Kong, 999077
ANT Peak Gain	3.00 dBi

# 2. Antenna Photo:



### 3. Test Equipment & Conditions

#### 3.1 Test instrument

VSWR is tested using Agilent E5071B connected to a hand mechanism, and the status is free space.

#### 3.2 Test environment and methods

Dark room specifications: ETS-743

TD-SCDMA test equipment: StarPoint SP6010/Agilent 8960

LTE-TDD/FDD-SCDMA test equipment: StarPoint SP8011/CMW500

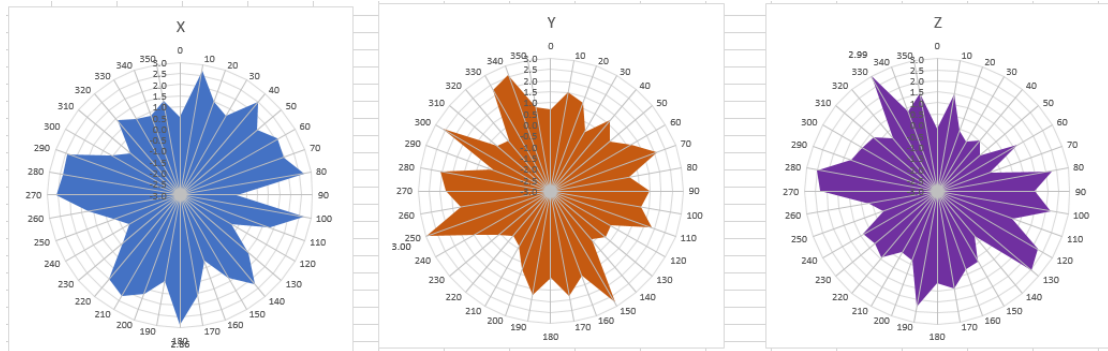
WCDMA/GSM/CDMA test equipment: Agilent 8960

Passive efficiency testing equipment: Agilent Technologies E5071B



## 4 . Antenna Radiation Pattern

915MHz



925MHz

