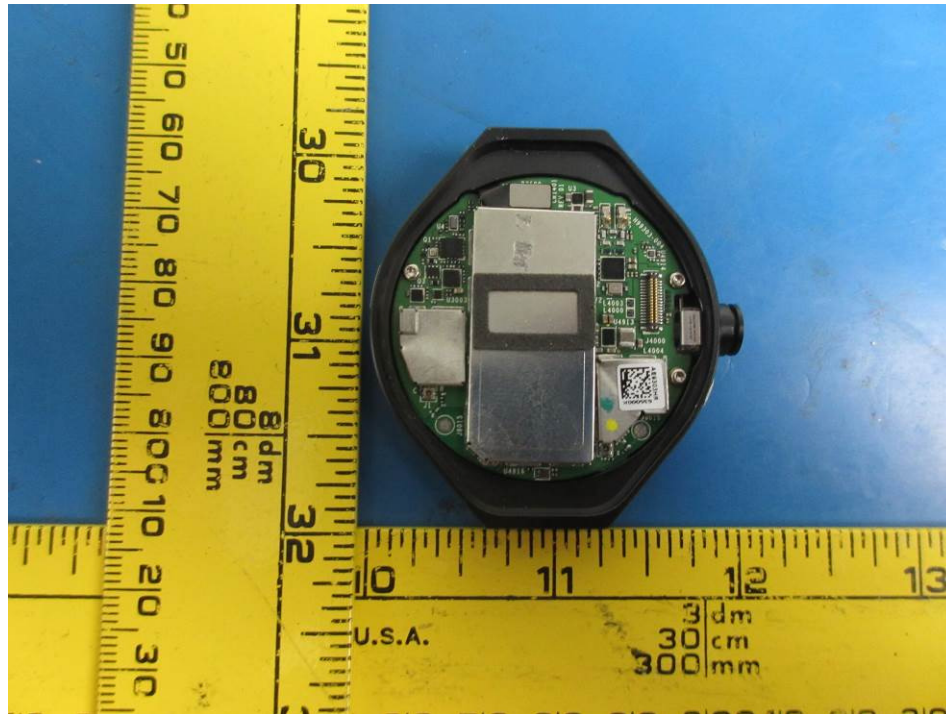
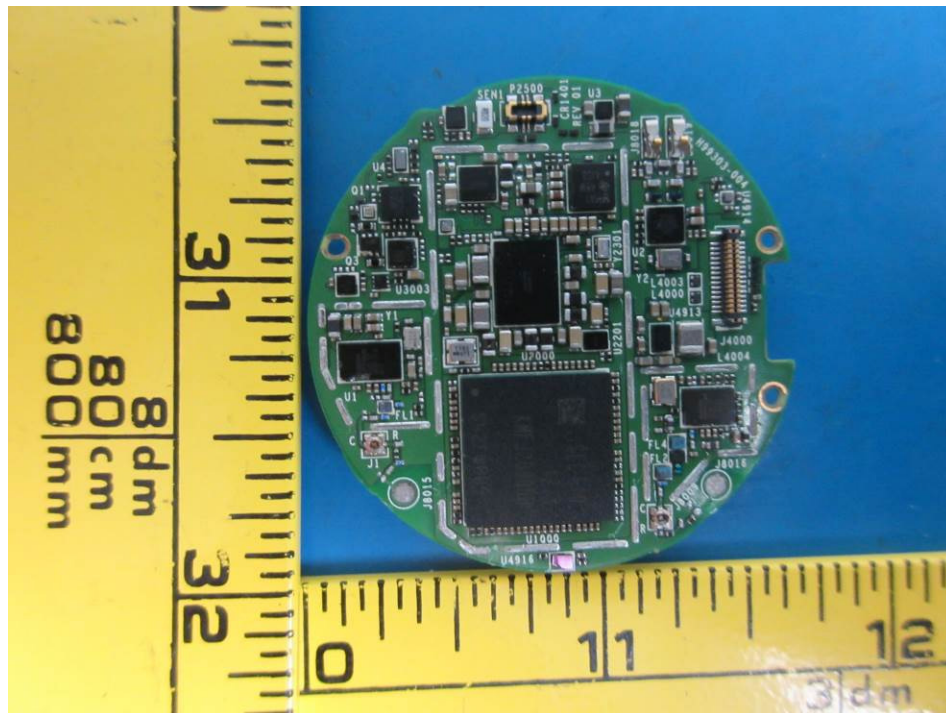


16.7 EUT Open Case View



16.8 EUT Main Board Top View



A photograph of a small, green, oval-shaped electronic component, likely a battery or sensor module, placed on a blue surface. The component has a white label with the text "ATL 1.52W 2.8V+" and a QR code. A yellow ruler is visible on the left side of the component, showing measurements in centimeters and millimeters.

RTL 1.52W
A
02-NW
000C
100
1

3.6V 400mAh

Rechargeable Li-Polymer Battery Pack
 聚合物锂离子充电电池
 执行标准: GB 31241-2014
 额定容量: 400mAh 3.2V 1.52Wh
 充电限制电压/Charge Limit Voltage: 4.35V
 型号/Intel part number: J18405
 Manufacture part number:
 GB-S10-432830-020H
 Production Date: 2016年06月17日
 Manufacturer:
 Dongguan Amperex Technology Limited
 东莞新能源科技有限公司 制造

Li-ion

--- END OF REPORT ---