

Photographs of P7QNPM-7 Mobile Phone

March 2002



Exhibit 4: RF Circuitry

Top View of Printed wire Board, with RF shielding cans removed to show RF Circuitry.

RF Antenna Module, whip extended, showing Printed integral Antenna Circuit.

Photographs of P7QNPM-7 Mobile Phone

March 2002



Exhibit 5: Bottom View of Printed Wire Board with screening can removed to show baseband circuitry.

Photographs of P7QNPM-7 Mobile Phone

March 2002

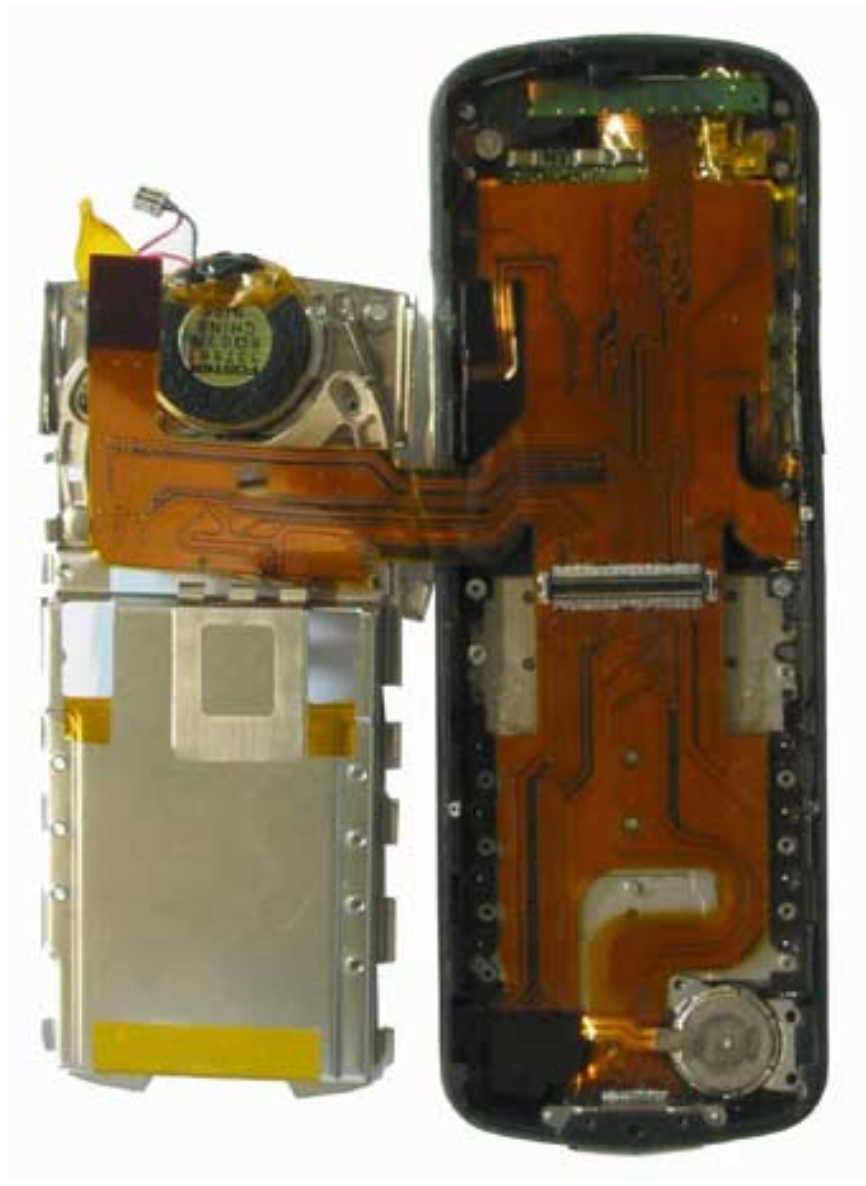


Exhibit 6: Back internal view showing interconnecting printed flexy circuit and peripherals.