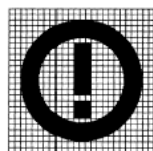
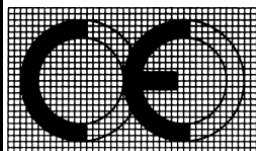


## Austin TF Commercial Sticker and CU Sticker

DATE 日期	DOCUMENT NO. 文件编号	VERSION 版本	REMARK 备注
2021-10-18		1.0	Creation of the document (draft)
2021-01-18		V2.0	增加认证信息

Note: for CE logo, there is mandatory requirement as below:

- The CE conformity marking must consist of the initials “CE” taking the following form, if the CE marking is reduced or enlarged, the proportions given in the above graduated drawing must be respected.
- The CE marking must have a height of at least 5 mm except where this is not possible on account of the apparatus.
- The following picture shows an example of CE marking. The “CE” mark is always required. The other elements, notified body number (“NBnr” replaced by the four-digit identification number of any notified body involved) and class identifier (alert sign), may or may not be present depending on the particular circumstances.
- CE Logo, notified body number (“NBnr”) and class identifier (alert sign) must have same height.

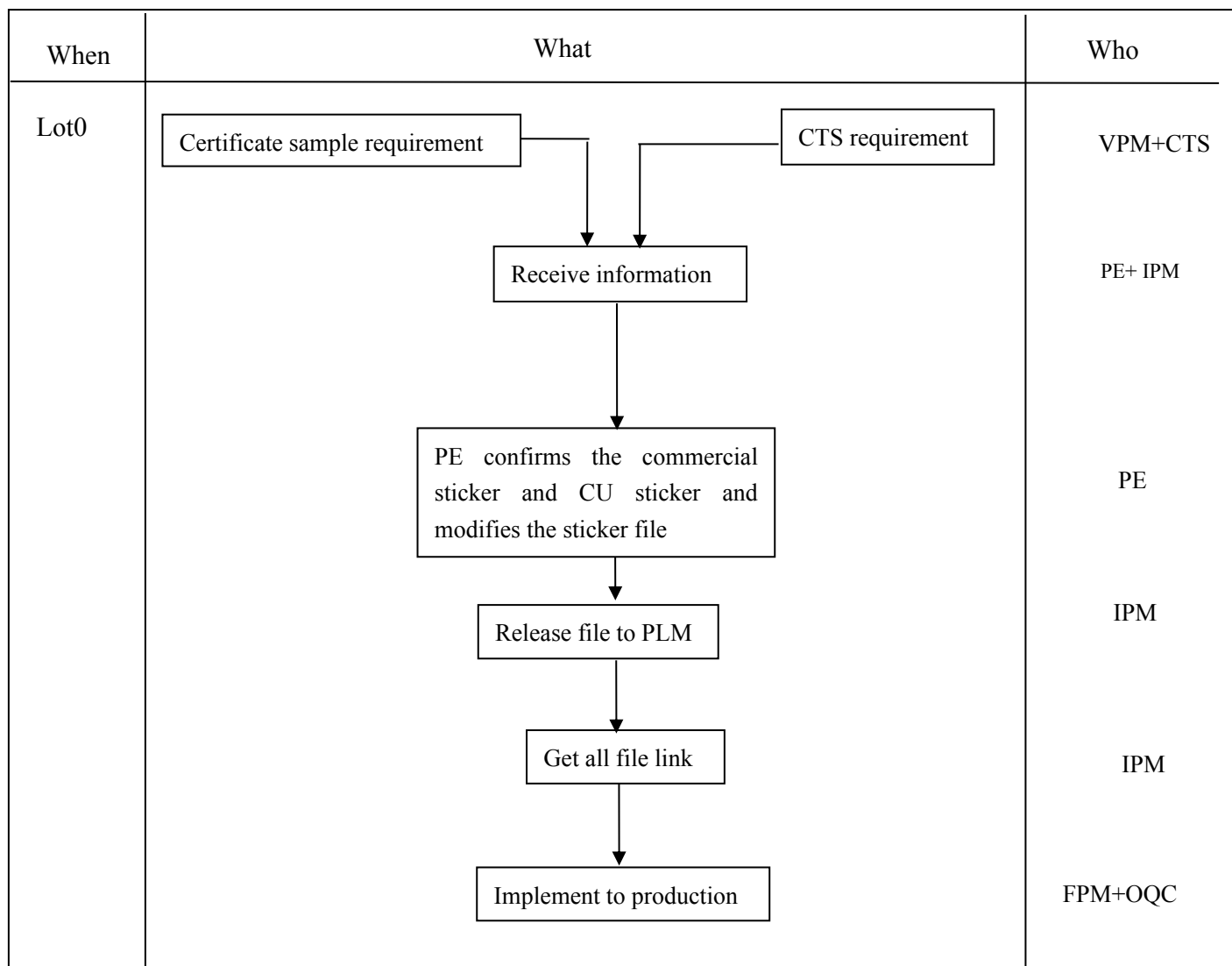


	Written by 拟定	Verified by 审核		Approved by 批准
Function 职位	IPM	IPM Leader	NPI Manager	GIM Director
Name 姓名	XINGMING.SHI	Xingming SHI	Yunfeng XU	Dai XU
Date 日期	2021-10-18			
Signature 签名				

Version 版本	Date 日期	Department Name 部门	Document Name 文件名称	Document Number 文件编号
1.0	2021-10-18	NPI	OTTAWA Commercial Sticker and CU Sticker	

## Procedure Flow Chart

This flow chart define the “commercial sticker and cu sticker” document, and define the flow of “made in” file, “Specific Marking” file and “ Importation information “file to EMS factory.



## 1 Purpose and Application Field

The purpose of this document is to define the commercial sticker and CU stickers modify procedure and define all of information on the commercial sticker and CU sticker for T1 PRO product and implement to production

## 2 Responsibility

### 2.1 CTS

- Release official document contain commercial sticker and cu sticker label information.

### 2.2 IPM

- Get information from CTS ,and confirm the work instruction PE prepared for factory

Version 版本	Data 日期	Department Name 部门	Document Name 文件名称	Document Number 文件编号
1.0	2021-10-18	NPI	OTTAWA Commercial Sticker and CU Sticker	

## 2.3 PE

- Define the format of the commercial sticker and cu sticker and prepare label printing work instruction for production

## 2.4 FPM&amp;OQC

- implement this document to production

## 3 Reference Document

CE&NOM Logo	Model
	Company
	Bluetooth ID
DATAMATRIX	SIMLock <b>SW_VERSION</b> Shortcode PTH Date
	Made in China
	Cu Ref
	IMEI (Barcode&Text)
Manufacturer address	

Signification	Remark
FCC ID	
Logos	
Code name	
CU Ref.	
SIM Lock	Print "E" means Enhanced SIM Lock; Print "N" means Normal SIM Lock or No SIM Lock
IMEI1 TEXT	
DATAMATRIX Code	IMEI No. / INDUS. REF. / PTH(PTM) / <b>SW_VRESION</b> / CU REF.
Company	
Bluetooth DID	
Short code	
IMEI1 Barcode	
Made in	
IMEI2 Text	
PTS	soft' techn. Release
PTM	
Date	

Version 版本	Data 日期	Department Name 部门	Document Name 文件名称	Document Number 文件编号
1.0	2021-10-18	NPI	OTTAWA Commercial Sticker and CU Sticker	

#### 4. COMMERCIAL LABEL MARKING (IMEI/MEID sticker)




4.1 镭雕 IMEI 到 SIM 卡托，位置如下，Laser IMEI on SIM tray, Picture is blow:

#### 4.2 Printing Zone definition

Label information T810S  
料号: CPE000521AC0  
Length=45mm  
Width = 30mm

Brand	Model name	IMEI TAC	Bluetooth Declaration ID	Certification name
Austin TF	T701DL	01605400	D048576	FCC ID: 2ACCJN055 HAC: T3/M4

#### 4.3 IMEI Sticker Sample

T701DL-2ALCUS01-A T701DL-2AKFUS01-A T701DL-2*****_* T701DL-2*****_**	TracFone Wireless, Inc. MODEL: T701DL TF PN: XXXXXXXXXXXXX TCL Communication Ltd. Bluetooth Declaration ID D048576 N XXXX XXXX 01 XXX Made in China FCC ID: 2ACCJN055 HAC: T3/M4 T701DL-2ALCUS01-A IMEI: 016054000000017 	 
-------------------------------------------------------------------------------	-----------------------------------------------------------------------------------------------------------------------------------------------------------------------------------------------------------------------------------------------------------------------------------------------------------------------------------------------	--------------------------------------------------------------------------------------------------------------------------------------------------------------------------------

NOTE: About Made in info, we should print “Made in China” or “MADE IN CHINA” for EU, print “Hecho en China”

Version 版本	Data 日期	Department Name 部门	Document Name 文件名称	Document Number 文件编号
1.0	2021-10-18	NPI	OTTAWA Commercial Sticker and CU Sticker	



or “**HECHO EN CHINA**” for US both on IMEI and CU label. For United States, print “**Made in China**” both on IMEI and CU labels.

## 5. UNIT BOX LABEL MARKING (CU sticker)

### 5.1 Label format

Label Dimension: 60\*20 mm

Blank Label Reference: CPF21RA000C0

T701DL-2ALCUS01-A T701DL-2AKFUS01-A T701DL-2*****_* T701DL-2*****_**	Model:T701DL TF PN: XXXXXXXXXXXXX  IMEI: 016054000000015 	
-------------------------------------------------------------------------------	-------------------------------------------------------------------------------------------------------------------------------------------------------------------------------------------------------------------------------------------	--

## 5. Carton label:

Label Dimension:

Blank Label Reference:

Version 版本	Data 日期	Department Name 部门	Document Name 文件名称	Document Number 文件编号
1.0	2021-10-18	NPI	OTTAWA Commercial Sticker and CU Sticker	