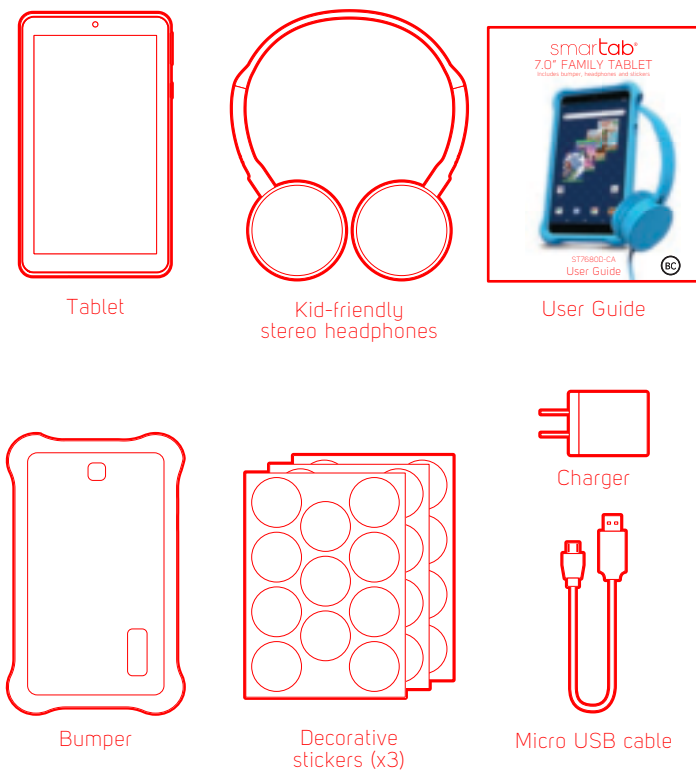


smarttab® 7.0" FAMILY TABLET

Includes bumper, headphones and stickers



In the box



Care & safety precautions

- CHOKING HAZARD - Small parts. Not intended for children under 3 years old.
- Electrically operated device. Adult supervision required.
- During charging, keep your device and charger near room temperature for efficient battery charging.
- New batteries are not fully charged.
- New batteries or batteries stored for a long time may take more time to charge.
- The included charger is intended for indoor use only.
- Service should only be provided by an authorized service provider.
- Never attempt to disassemble, repair or modify the tablet yourself.
- Do not use the tablet in rain or other wet locations.
- Avoid spilling any liquid on the tablet.
- In case the tablet gets wet, unplug all cables and turn off the tablet.
- Do not attempt to dry the tablet with an external heat source.
- Unplug all cables and turn off the tablet before cleaning.
- Use a soft, lint-free cloth to clean the tablet and display.
- Avoid getting moisture in open ports.
- Do not use household cleaners, solvents, alcohol, or abrasives to clean the tablet.
- Routinely check the tablet for proper and safe conditions. If there is any damage, or broken parts, remove the tablet from use.
- If for any reason the screen (display) is fractured or cracked, immediately remove this product from use and contact Customer Support.
- It is rare but possible for seizures to be triggered by light flashes or patterns such as those on computer or TV screens. To reduce exposure to this potential hazard, play/watch in a well-lit room, sit an appropriate distance from the screen and take 10- to 15-minute breaks every hour.
- Cords could be a strangulation hazard.
- Keep out of reach of children under 3 years of age.
- Children pulling on the cord could cause the computer monitor or other equipment to which the device is connected to fall with possibility of property damage, serious injury or death. Adult supervision required during use.
- Long-term exposure to loud sounds, at high volume, may result in permanent hearing loss.
- When using headphones or earbuds, it is recommended that the product is listened to at lower volumes for shorter periods of time. Set the volume while in a quiet environment; turn the volume down if you cannot hear the people speaking near you.
- Limit the listening time to 90 minutes, followed by a quiet period. The louder the volume, the less time required before your hearing may be affected.
- If you experience ringing in your ears or hear muffled speech, stop listening and have your hearing checked.

WARNING: TO REDUCE THE RISK OF FIRE OR ELECTRICAL SHOCK, DO NOT EXPOSE THIS PRODUCT TO RAIN OR MOISTURE.



THE LIGHTNING FLASH WITH ARROWHEAD SYMBOL, WITHIN AN EQUILATERAL TRIANGLE, IS INTENDED TO ALERT THE USER TO THE PRESENCE OF UNINSULATED "DANGEROUS VOLTAGE" WITHIN THE PRODUCT'S ENCLOSURE THAT MAY BE OF SUFFICIENT MAGNITUDE TO CONSTITUTE A RISK OF ELECTRIC SHOCK TO PERSONS.



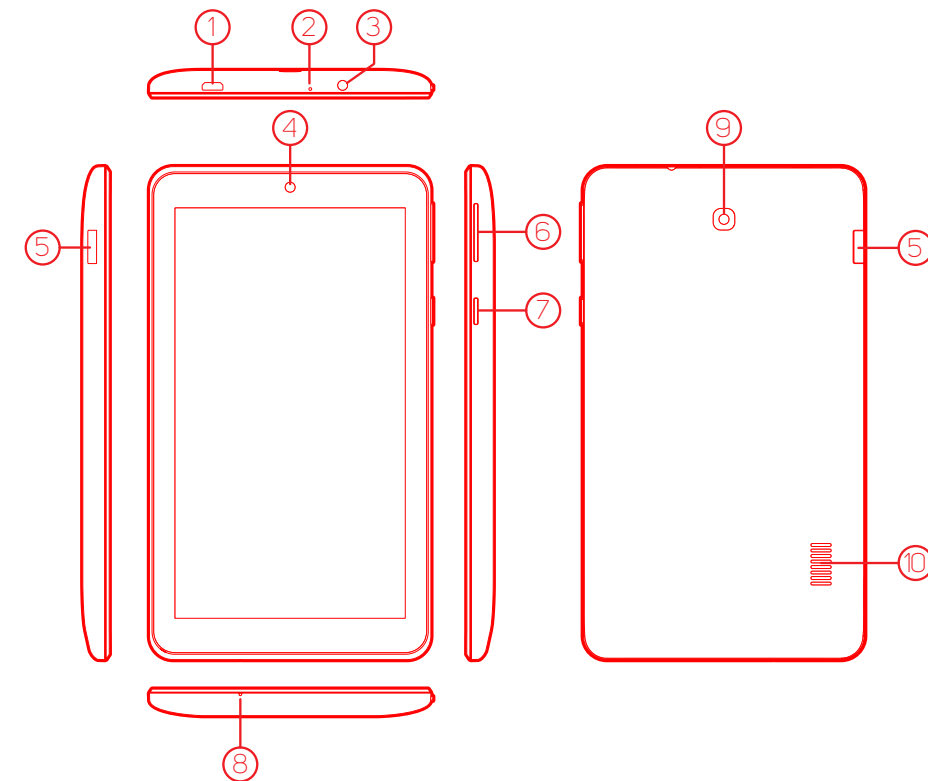
WARNING
RISK OF ELECTRIC SHOCK
DO NOT OPEN

WARNING: TO REDUCE THE RISK OF ELECTRIC SHOCK, DO NOT REMOVE COVER (OR BACK). NO USER SERVICEABLE PARTS INSIDE. REFER SERVICING TO QUALIFIED SERVICE PERSONNEL.



THE EXCLAMATION POINT WITHIN THE EQUILATERAL TRIANGLE IS INTENDED TO ALERT THE USER TO THE PRESENCE OF IMPORTANT OPERATING AND MAINTENANCE (SERVICING) INSTRUCTIONS IN THE LITERATURE ACCOMPANYING THE PRODUCT.

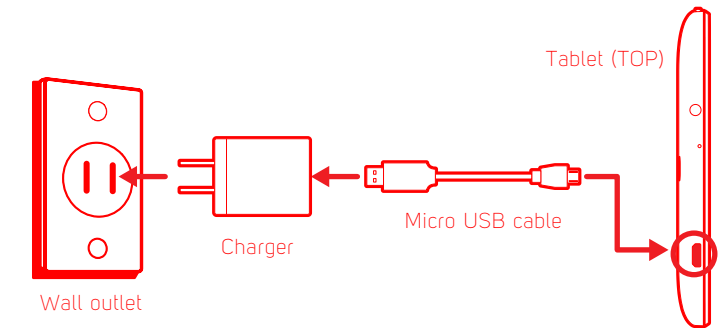
Buttons, ports & hardware



- ① Micro USB port
- ② Reset
- ③ Headphone jack
- ④ Front camera
- ⑤ Micro SD card slot
- ⑥ Volume buttons
- ⑦ Power button
- ⑧ Microphone
- ⑨ Rear camera
- ⑩ Speaker

Charging

Connect the tablet to a wall outlet using the included Micro USB cable and charger as shown below.



- Battery Tips:**
- Turn off Wi-Fi when it's not in use.
 - Lock the tablet (turning the display off) to shorten charging time.
 - To optimize battery time and performance, adjust the "Brightness" and "Screen timeout" options in the Settings panel.
 - It is recommended to keep the brightness level at 50% or under if the tablet is in use while charging.

Power ON / OFF

Turning on the tablet

Press & hold the Power button until the startup screen appears.

Power off the tablet

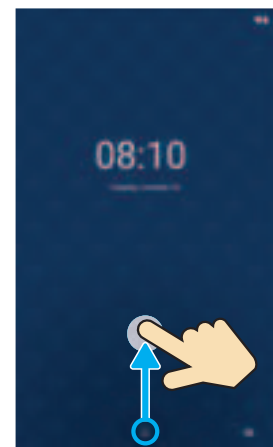
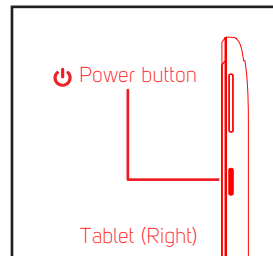
Press & hold the Power button until the "Power off" option appears.

Lock the tablet (standby)

Briefly press the Power button. (Lock the tablet to conserve the battery).

Unlock the tablet

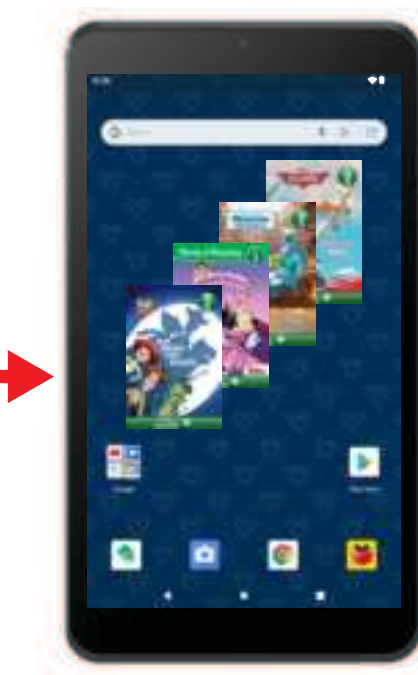
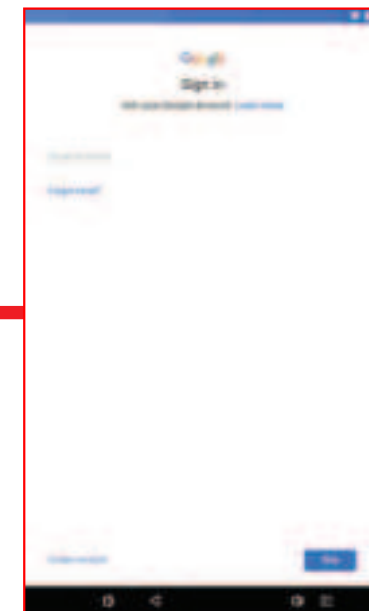
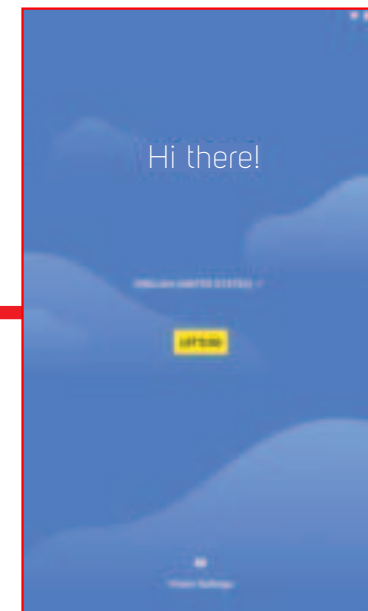
Briefly press the Power button, and slide the Lock icon up.



Lock screen

Turning on

- 1 Press and hold the Power button to get started.
- 2 Follow the initial setup wizard prompts.
- 3 To use the Google™ Play Store, sign into or create a Google Account.
- 4 Set up Google Family Link.



Home screen

- i** If you use Gmail, you already have a Google Account — if not, you can create an account now.

- i**
- View time spent in apps
 - Manage the apps they use
 - Set limits on screen time
 - Lock & locate their device

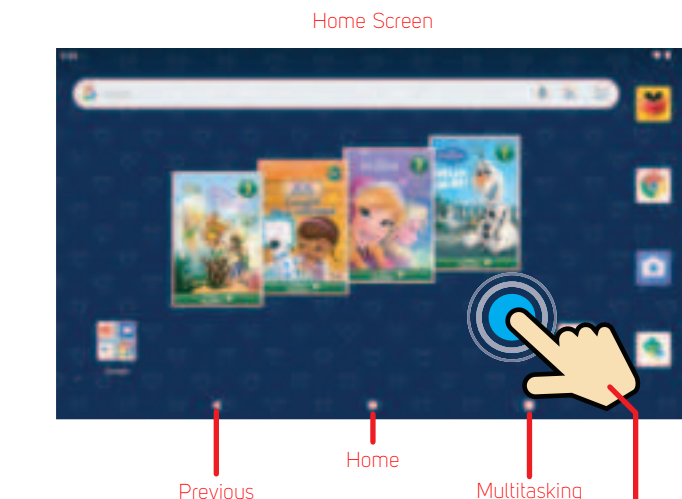
Google Play



Google Play

Google Play is a digital content experience from Google where you can find and enjoy your favorite music, movies, TV shows, books, and Android™ apps and games. It's your entertainment hub: you can access it from the web or from your Android device, and all your content is instantly available across your devices.

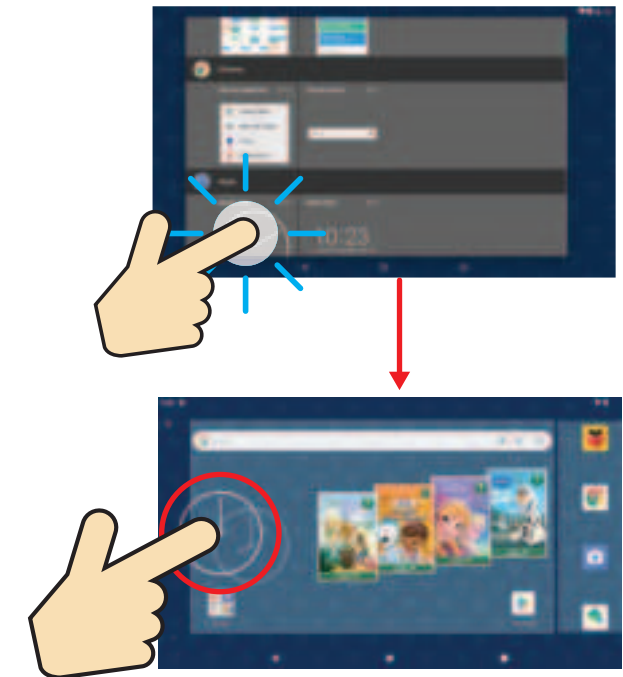
Home Screen



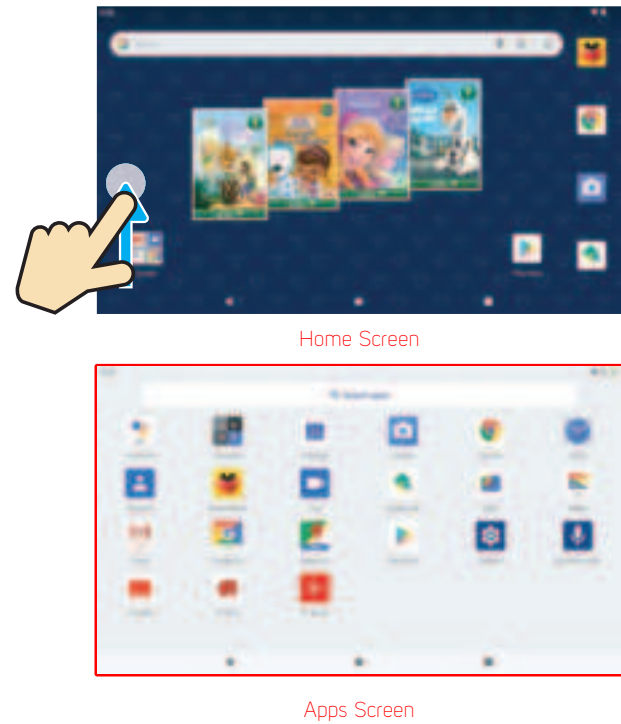
Widgets
To add a widget, press and hold anywhere on the home screen, and select the "Widgets" option.

Home Screen

Press and hold widgets to place them on the home screen as shown below.



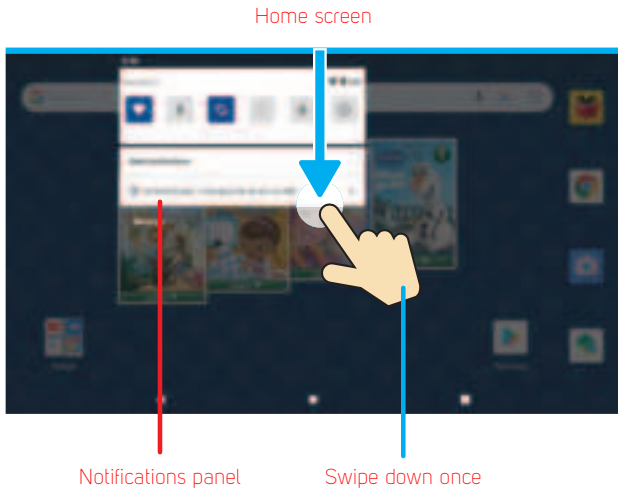
Swipe up the home screen to access the Apps Screen.



Notifications and Quick Settings

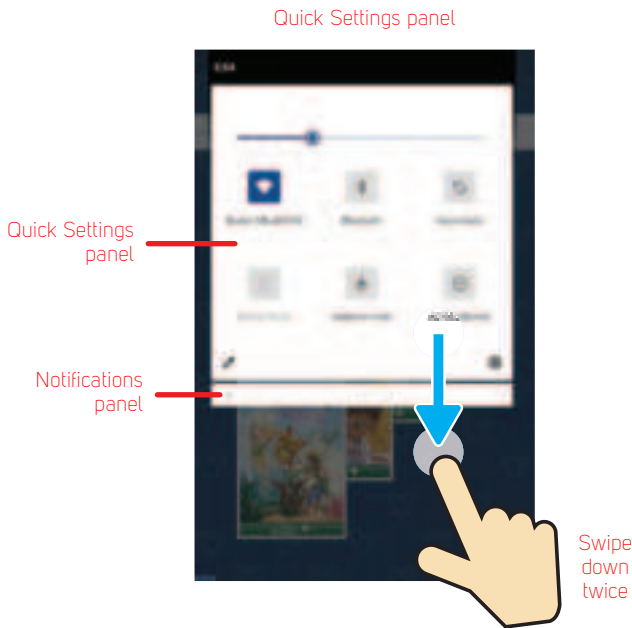
Notifications panel

Swipe down from the top edge of the screen to display the Notifications panel where you can browse and reply to your emails, check software updates, reminders and more.



Quick Settings panel

Swipe down twice from the top edge of the screen to expand and access the Quick Settings panel, where you can easily enable/disable Wi-Fi, Bluetooth, Airplane mode and other settings.

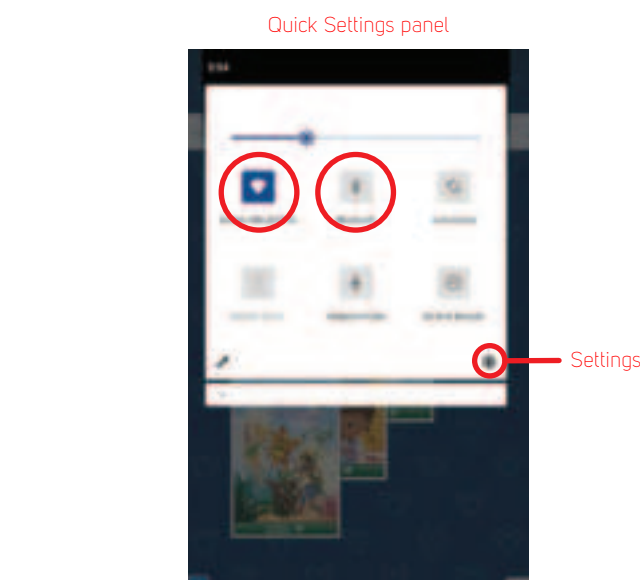


Connecting

Wi-Fi and Bluetooth®

To enable/disable Wi-Fi or Bluetooth®, simply tap the icons on the Quick Settings panel as shown below.

To access more settings options, select the  icon.

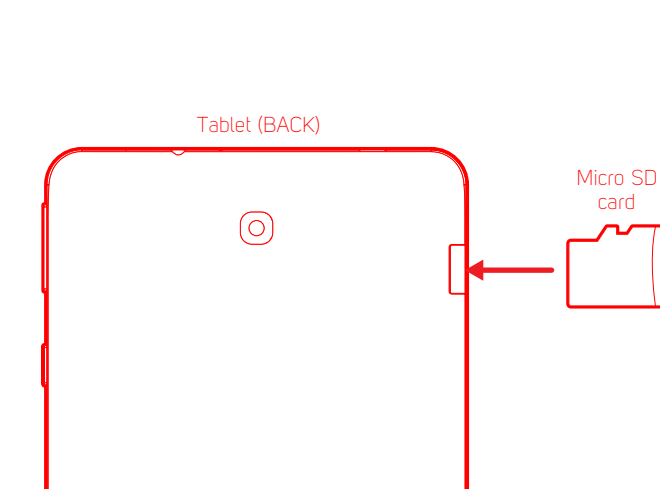


Expanding the storage

Inserting a Micro SD card

To install a Micro SD card into the tablet, carefully insert the card as shown below into the card slot until it clicks and locks into place.

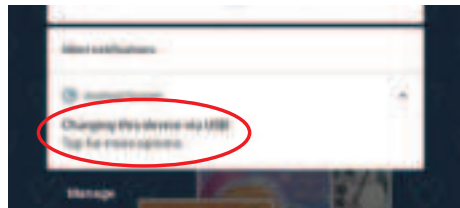
To remove the Micro SD card, gently press it inward to eject.



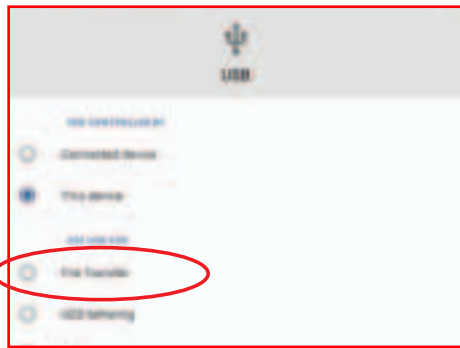
Transferring files

1 Connect the tablet to the computer using the included Micro USB cable as shown below.

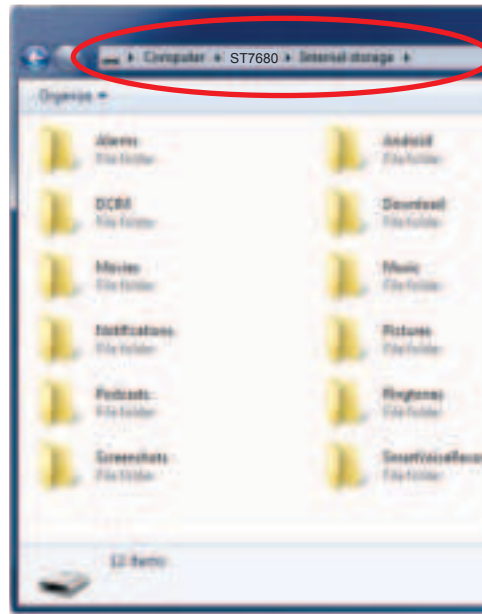
2 Tap the notification on the tablet screen.



3 Select "Transfer files".



4 The internal storage of the tablet will appear on your PC.

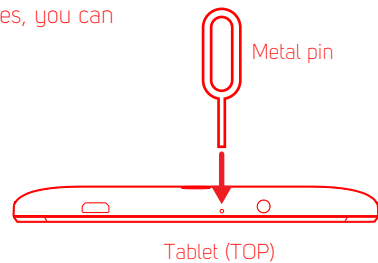


Miscellaneous

Reset

If the tablet malfunctions or freezes, you can use the Reset button to restart it.

To reset the tablet, take a metal pin (such as the end of a paper clip) and gently push the recessed Reset button on the back of the tablet as shown below.



The tablet will restart.

Text-To-Speech

Google Text-to-speech powers applications to read the text on your screen aloud. For example, it can be used by:

- Google Play Books to 'Read Aloud' your favorite book
- Google Translate to speak translations aloud so that you can hear the pronunciation of a word
- TalkBack and accessibility applications for spoken feedback across your device
- ... and many other applications in the Play Store

To use Google Text-to-speech on your Android device, go to Settings>System>Languages & Input>Advanced>Text-to-speech output. Select Google Text-to-speech Engine as your preferred engine.

For more information regarding TTS, please go to: www.southern telecom.com/tts_tabletsupport.html

Regulatory information

To view FCC regulatory information for this tablet, go to Settings > About tablet > FCC certification.

Legal information

FCC Part 15:

This device should be installed and operated with a minimum distance of 15cm between the antenna and all persons. This device has been tested and found to comply with the limits for a Class B digital device, pursuant to Part 15 of the FCC Rules. These limits are designed to provide reasonable protection against harmful interference in a residential installation. This device generates, uses and can radiate radio frequency energy and, if not installed and used in accordance with the instructions, may cause harmful interference to radio communications. However, there is no guarantee that interference will not occur in a particular installation. If this device does cause harmful interference to radio or television reception, which can be determined by turning the device off and on, the user is encouraged to try to correct the interference by one or more of the following measures: -- Reorient or relocate the receiving antenna. -- Increase the separation between the device and receiver. -- Connect the device into an outlet on a circuit different from that to which the receiver is connected. -- Consult the dealer or an experienced radio/TV technician for help

Changes or modifications not expressly approved by the party responsible for compliance could void the user's authority to operate the equipment.

IC WARNING

This device contains licence-exempt transmitter(s)/receiver(s) that comply with Innovation, Science and Economic Development Canada's licence-exempt RSS(s). Operation is subject to the following two conditions: (1) This device must not cause interference. (2) This device must accept any interference, including interference that may cause undesired operation of the device

ADVERTENCIA IC

Cet appareil contient des émetteurs / récepteurs exempts de licence conformes aux RSS (RSS) d'Innovation, Sciences et Développement économique Canada. Le fonctionnement est soumis aux deux conditions suivantes : (1) Cet appareil ne doit pas causer d'interférences. (2) Cet appareil doit accepter toutes les interférences, y compris celles susceptibles de provoquer un fonctionnement indésirable de l'appareil.

Battery Disposal & Recycle

This device contains a Lithium-ion battery. The battery must be recycled or disposed of properly. Contact your local waste management office for information on battery recycling or disposal.

1-800-822-8837



Designed and distributed by Southern Telecom Inc. Brooklyn, NY 11220 © 2020 All Rights Reserved.

© 2020 Disney. All rights reserved.

© 2020 Disney/Pixar. All rights reserved.

SmarTab is a registered trademark of Southern Telecom Inc.

Google, Android, Google Play and other marks are trademarks of Google LLC.

The Bluetooth® word mark and logos are owned by the Bluetooth SIG, Inc.

All other trademarks and trade names are those of their respective owners.

Images simulated and may differ from the actual product.

Limited Warranty

LIMITED WARRANTY

Limited warranty to original consumer

This product (including any accessories included in the original packaging) as supplied and distributed new by an authorized retailer is warranted by Southern Telecom, Inc. To the original consumer purchaser against defects in materials and workmanship (Warranty) as follows:

Product type: tablet

Territory: Canada

Parts warranty: 1 year

Labor warranty: 1 year

To obtain warranty service:

- Email: customersupport@gmdwholesale.com
- Provide proof of the date of purchase within the package (dated bill of sale)
- Prepay all shipping costs to the authorized service center, and remember to insure your return
- Include a return shipping address (no P.O. Boxes) a telephone contact number, and the defective unit within the package
- Describe the defect or reason you are returning the product

Your product will be repaired or replaced, at your option, for the same or similar model of equal value if examination by the service center determines this product is defective. Products received damaged as a result of shipping will require you to file a claim with the carrier.

Warranty service not provided

This warranty does not cover damage resulting from accident, misuse, abuse, improper installation or operation, lack of reasonable care, unauthorized modification including software modifications such as the installation of custom firmwares. This warranty is voided in the event any unauthorized person opens, alters or repairs this product. All products being returned to the authorized service center for repair must be suitably packaged.

NO WARRANTIES, WHETHER EXPRESS OR IMPLIED, INCLUDING, BUT NOT LIMITED TO, ANY IMPLIED WARRANTIES OF MERCHANTABILITY OR FITNESS FOR A PARTICULAR PURPOSE, OTHER THAN THOSE EXPRESSLY DESCRIBED ABOVE SHALL APPLY. DISTRIBUTOR FURTHER DISCLAIMS ALL WARRANTIES AFTER THE EXPRESS WARRANTY PERIOD STATED ABOVE. NO OTHER EXPRESS WARRANTY OR GUARANTY GIVEN BY ANY PERSON, FIRM OR ENTITY WITH RESPECT TO THE PRODUCT SHALL BE BINDING ON DISTRIBUTOR. REPAIR, REPLACEMENT, OR REFUND OF THE ORIGINAL PURCHASE PRICE - AT DISTRIBUTOR'S SOLE DISCRETION - ARE THE EXCLUSIVE REMEDIES OF THE CONSUMER. IN NO EVENT WILL DISTRIBUTOR OR ITS MANUFACTURERS BE LIABLE FOR ANY INCIDENTAL, DIRECT, INDIRECT, SPECIAL, PUNITIVE OR CONSEQUENTIAL DAMAGES (SUCH AS, BUT NOT LIMITED TO, DAMAGES FOR LOSS OF PROFITS, BUSINESS, SAVINGS, DATA OR RECORDS) CAUSED BY THE USE, MISUSE OR INABILITY TO USE THE PRODUCT, EXCEPT AS STATED HEREIN. NO OTHER WARRANTIES SHALL APPLY. NOTWITHSTANDING THE FOREGOING, CONSUMER'S RECOVERY AGAINST DISTRIBUTOR SHALL NOT EXCEED THE PURCHASE PRICE OF THE PRODUCT SOLD BY DISTRIBUTOR. THIS WARRANTY SHALL NOT EXTEND TO ANYONE OTHER THAN THE ORIGINAL CONSUMER WHO PURCHASED THE PRODUCT AND IS NOT TRANSFERABLE.

Some countries, states or provinces do not allow the exclusion or limitation of incidental or consequential damages or allow limitations on warranties, so limitation or exclusions may not apply to you. This warranty gives you specific legal rights, and you may have other rights that vary from state to state or province to province. Contact your authorized retailer to determine if another warranty applies.