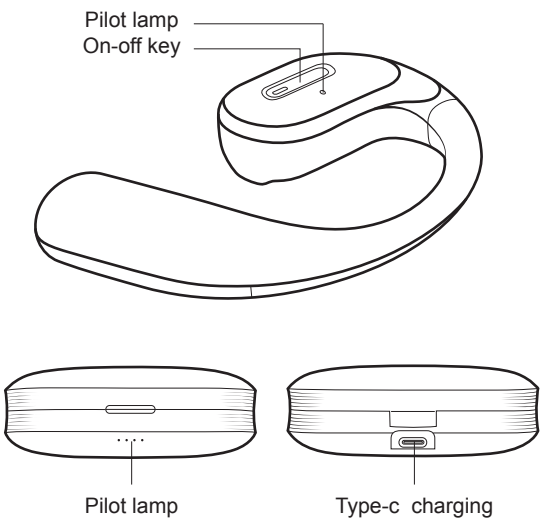


Product specification

The product shall be subject to the physical object, please read the contents of this manual carefully before use.
The Company reserves the right to improve the product and its instructions, subject to change without prior notice.

Product parameter



Model: B14

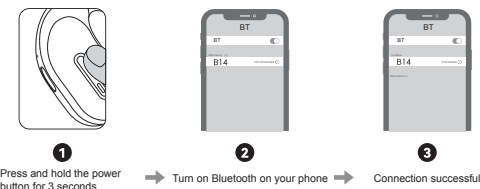
Endurance time: 9H

BT version: 5.4

Charging compartment battery: 500mAh

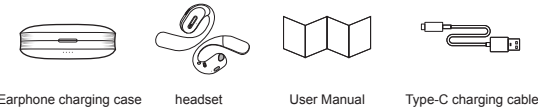
Frequency Response: 20Hz~20KHz

BT connection instructions



1. When the earphones are turned off, long press the power button for 3 seconds to automatically enter pairing mode.
2. Turn on the Bluetooth of the phone, click to search for Bluetooth devices, find "B14", and click to connect.
3. After successful connection, the earphones will sound a voice prompt saying "Connected"

Basic accessories



Key operation guide

Power on	Press and hold the left and right ear buttons for 3 seconds to turn on the device
Shut down	Press and hold the left and right ear buttons for 5 seconds to turn off the device
Music/Game Mode	Three consecutive clicks on the right ear key to switch between music/game modes
Music playback	Double click on either side to open the key
Music pause	Double click on either side to open the key
Previous song	Long press the left ear key for 1.5 seconds
Next song	Long press the right ear key for 1.5 seconds
Volume+	Click on the key on the right ear
Volume-	Click on the left ear switch key
Sound prompt switching	Four clicks on any earphone
Answer the phone	Double click on either side to open the key
Hang up the phone	Double click on either side to open the key
Reject incoming calls	Press and hold the key on either side for 1.5 seconds
Voice wake-up	Three consecutive hits on the left ear to activate the key
Voice off	Press the left ear key again for 3 consecutive times to exit
Restore factory settings	6. Click on the key to restore factory settings
Clear pairing	After 5 consecutive clicks on the left/right earphones, the earphones will shut down (clearing all pairing and connection information)

Tips

1. Dear users, for your better experience with this product, please fully charge it before use.
2. Please use a DC5V charger and a computer to charge the headset. Do not use DC9V, DC12V, DC24V to charge the headset.
3. This product has been idle for a long time, please recharge it within 2 months to ensure good battery performance.
4. After wearing this product, it is recommended to use a dry towel to clean the sweat and water stains on the surface of the product, and leave it for 2 hours to ensure that the charging port is dry before charging the headset to prevent the short circuit of sweat during charging and affecting the service life of this product.
5. Long-term high-volume music may cause discomfort. Please try to use a medium or so volume to avoid listening at high volume for a long time.
6. Do not throw, press the headset or submerge it in water. Stay away from fire, water and high pressure equipment.

CE FCC

Made in China



FCC Statement

Note: This equipment has been tested and found to comply with the limits for a Class B digital device, pursuant to part 15 of the FCC Rules. These limits are designed to provide reasonable protection against harmful interference in a residential installation. This equipment generates, uses and can radiate radio frequency energy and, if not installed and used in accordance with the instructions, may cause harmful interference to radio communications. However, there is no guarantee that interference will not occur in a particular installation. If this equipment does cause harmful interference to radio or television reception, which can be determined by turning the equipment off and on, the user is encouraged to try to correct the interference by one or more of the following measures:
—Reorient or relocate the receiving antenna.
—Increase the separation between the equipment and receiver.
—Connect the equipment into an outlet on a circuit different from that to which the receiver is connected.
—Consult the dealer or an experienced radio/TV technician for help.

This device complies with part 15 of the FCC Rules. Operation is subject to the following two conditions:(1) This device may not cause harmful interference, and (2) this device must accept any interference received, including interference that may cause undesired operation.

Any changes or modifications not expressly approved by the party responsible for compliance could void the user's authority to operate the equipment.

The device has evaluated to meet general RF exposure requirement. The device can be used be in portable exposure without restriction.