

Product Declaration

Date : March 17, 2025

To:

Federal Communications Commission
Authorization and Evaluation Division
7435 Oakland Mills Road
Columbia, MD

Applicant: Hyundai Mobis Co., Ltd.

Product Type: DISPLAY CAR SYSTEM

FCC ID: TQ8-DA351I6MG

We, Hyundai Mobis Co., Ltd., provide the product information.

1. The Difference between Basic Model and Additional Model

Audio AMP	Model Name	Note
Internal AMP	<u>*DA351I6MG(Basic Model)</u> , DA350I6NG, DA351I6NG, DA352I6NG, DA350I6GG, DA351I6GG, DA352I6GG, DA350I6GN, DA350I6GP, DA350I6MG	The distinction in model names is purely for regional management purposes.
External AMP	<u>*DA361I6GG</u> , DA360I6GG, DA360I6GN, DA360I6GP, DA350I6GG, DA351I6GG, DA350I6GN, DA361I6GG, DA360I6GN	The distinction in model names is purely for regional management purposes.

2. The internal and external audio AMPs are changes to the digital part that do not affect RF.

3. The detail difference is indicated on the next page.

If you have any questions regarding the difference, please contact us.

Sincerely,

Signed by:

=====

Company name : HYUNDAI MOBIS CO.,LTD.

Title and name : Representative / SeungHoon, Choe

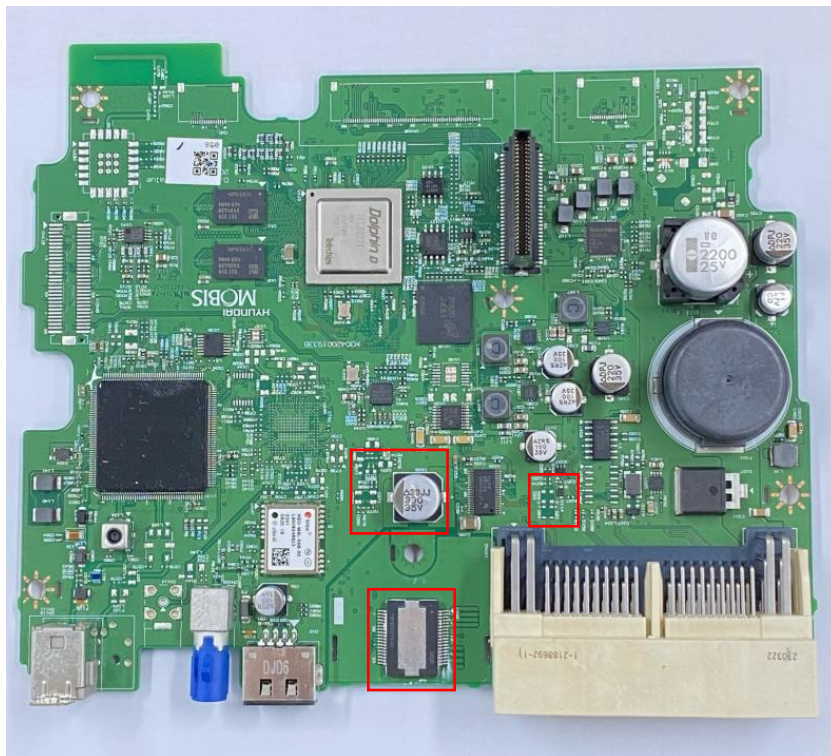
Tel : 82-31-260-0098

Place : South Korea

[Annex I] Difference between internal and external audio AMP.

- The internal and external audio AMPs are changes to the digital part that do not affect RF.

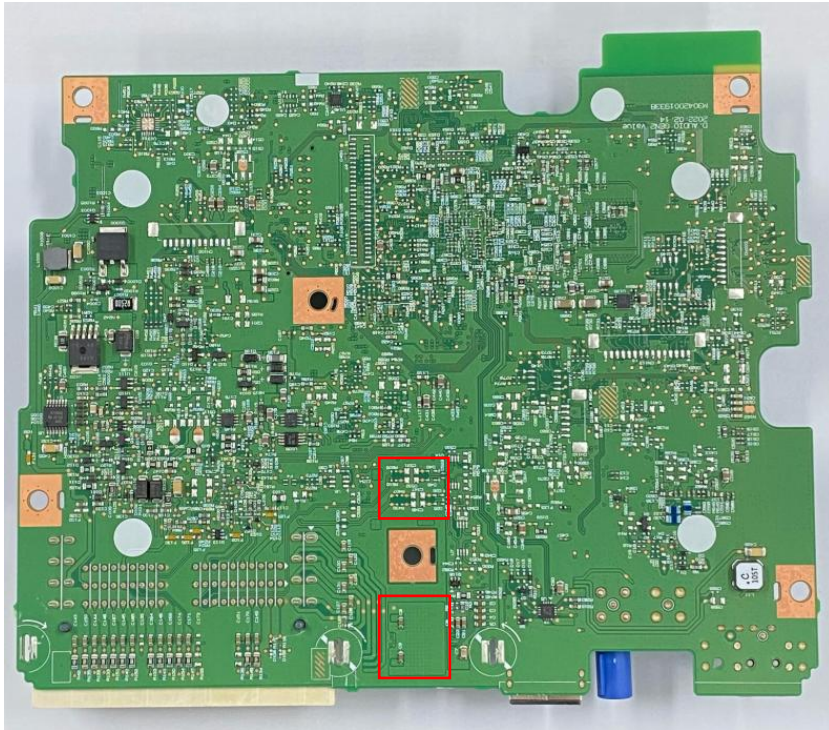
Internal AMP (Front)



External AMP (Front)



Internal AMP (Rear)



External AMP (Rear)

