

# SAR Test Report

Client Name : Winner Wave Limited

Address : Unit 1615 Peninsula Tower, 538 Castle Peak Road, Lai Chi Kok,  
Kowloon, Hong Kong

Product Name : EZC-5601

FCC ID : 2ADFS-EZC-5601

Date : Aug. 04, 2022

**Shenzhen Anbotech Compliance Laboratory Limited**



## Shenzhen Anbotech Compliance Laboratory Limited

Address: 1/F., Building D, Sogood Science and Technology Park, Sanwei Community,  
Hangcheng Street, Bao'an District, Shenzhen, Guangdong, China.

Tel: (86) 755-26066440 Fax: (86) 755-26014772 Email: service@anbotech.com



Hotline  
400-003-0500  
[www.anbotech.com](http://www.anbotech.com)

# Contents

1. Statement of Compliance .....	6
2. General Information.....	7
2.1 Client Information .....	7
2.2 Description of Equipment Under Test (EUT).....	7
2.3 Device Category and SAR Limits .....	8
2.4 Applied Standard .....	8
2.5 Environment of Test Site.....	8
2.6 Test Configuration.....	8
3. Specific Absorption Rate (SAR) .....	9
3.1 Introduction .....	9
3.2 SAR Definition .....	9
4. SAR Measurement System .....	10
4.1 E-Field Probe.....	11
4.2 Data Acquisition Electronics (DAE).....	11
4.3 Robot.....	12
4.4 Measurement Server .....	13
4.5 Phantom .....	13
4.6 Device Holder .....	15
4.7 Data Storage and Evaluation.....	16
5. Test Equipment List.....	18
6. Tissue Simulating Liquids.....	19
7. System Verification Procedures .....	20
8. EUT Testing Position.....	22
8.1 Body Worn Position .....	22
9. Measurement Procedures .....	23
9.1 Spatial Peak SAR Evaluation .....	23
9.2 Power Reference Measurement.....	24
9.3 Area Scan Procedures .....	24
9.4 Zoom Scan Procedures .....	25
9.5 Volume Scan Procedures .....	26
9.6 Power Drift Monitoring .....	26
10. Conducted Power .....	27
11. Antenna Location .....	32
12. SAR Test Results Summary.....	34
13. Simultaneous Transmission Analysis .....	36
13.1 Simultaneous TX SAR Considerations .....	36
13.2 Evaluation of Simultaneous SAR.....	36
14. Measurement Uncertainty .....	38

**Shenzhen Anbotek Compliance Laboratory Limited**

Address: 1/F., Building D, Sogood Science and Technology Park, Sanwei Community, Hangcheng Street, Bao'an District, Shenzhen, Guangdong, China.

Tel: (86) 755-26066440 Fax: (86) 755-26014772 Email: service@anbotek.com



Hotline  
400-003-0500  
www.anbotek.com

Appendix A. EUT Photos and Test Setup Photos.....	39
Appendix B. Plots of SAR System Check .....	40
Appendix C. Plots of SAR Test Data.....	42
Appendix D. DASY System Calibration Certificate.....	48

**Shenzhen Anbotech Compliance Laboratory Limited**

Address: 1/F., Building D, Sogood Science and Technology Park, Sanwei Community,  
Hangcheng Street, Bao'an District, Shenzhen, Guangdong, China.

Tel: (86) 755-26066440 Fax: (86) 755-26014772 Email: service@anbotech.com



Hotline  
400-003-0500  
www.anbotech.com



# TEST REPORT

Applicant : Winner Wave Limited  
Manufacturer : Actions Microelectronics Co., Ltd.  
Product Name : EZC-5601  
Model No. : EZC-5601, RBT-5600  
Trade Mark : EZCast, RedBirdtek  
Rating(s) : DC 5V From PC

**Test Standard(s)** : IEEE 1528:2013; IEC 62209-2:2010; FCC 47 CFR Part 2 (2.1093:2013);  
ANSI/IEEE C95.1:2005; Reference FCC KDBs;

The device described above is tested by Shenzhen Anbotek Compliance Laboratory Limited to determine the maximum emission levels emanating from the device and the severe levels of the device can endure and its performance criterion. The measurement results are contained in this test report and Shenzhen Anbotek Compliance Laboratory Limited is assumed full of responsibility for the accuracy and completeness of these measurements. Also, this report shows that the EUT (Equipment Under Test) is technically compliant with the IEEE 1528:2013, IEC 62209-2:2010, FCC 47 CFR Part 2 (2.1093:2013), ANSI/IEEE C95.1:2005, and Reference FCC KDBs requirements.

This report applies to above tested sample only and shall not be reproduced in part without written approval of Shenzhen Anbotek Compliance Laboratory Limited.

Date of Receipt

Jul. 04, 2022

Date of Test

Jul. 04, 2022~ Aug. 04, 2022

Prepared By

King Kong Jin

(Engineer / Kingkong Jin)

Reviewer

Bibo Zhang

(Supervisor / Bibo Zhang)

Approved & Authorized Signer

Tom Chen

(Manager / Tom Chen)

## Shenzhen Anbotek Compliance Laboratory Limited

Address: 1/F., Building D, Sogood Science and Technology Park, Sanwei Community, Hangcheng Street, Bao'an District, Shenzhen, Guangdong, China.

Tel: (86) 755-26066440 Fax: (86) 755-26014772 Email: service@anbotek.com




Hotline  
400-003-0500  
www.anbotek.com

## Version

Version No.	Date	Description
01	Aug. 04, 2022	Original

### Shenzhen Anbotech Compliance Laboratory Limited

Address: 1/F., Building D, Sogood Science and Technology Park, Sanwei Community,  
Hangcheng Street, Bao'an District, Shenzhen, Guangdong, China.  
Tel: (86) 755-26066440 Fax: (86) 755-26014772 Email: service@anbotech.com

 Hotline  
400-003-0500  
[www.anbotech.com](http://www.anbotech.com)

## 1. Statement of Compliance

The maximum results of Specific Absorption Rate (SAR) found during testing are as follows.

### <Highest SAR Summary>

Frequency Band	Highest Reported 1g-SAR(W/Kg)	SAR Test Limit (W/Kg)
	Body-worn(0mm)	
WIFI 2.4GHz ANT.1	0.333	1.6
WIFI 2.4GHz ANT.2	0.305	
WIFI 5.2GHz ANT.1	0.296	
WIFI 5.2GHz ANT.2	0.357	
WIFI 5.8GHz ANT.1	0.310	
WIFI 5.8GHz ANT.2	0.302	
Max. Simultaneous SAR	0.737	
Test Result	PASS	

This device is in compliance with Specific Absorption Rate (SAR) for general population/uncontrolled exposure limits (1.6 W/kg) specified in KDB 447498 D01 v06, 2015 and ANSI/IEEE C95.1-2005, and had been tested in accordance with the measurement methods and procedures specified in IEEE 1528-2013

### Shenzhen Anbotek Compliance Laboratory Limited

Address: 1/F., Building D, Sogood Science and Technology Park, Sanwei Community, Hangcheng Street, Bao'an District, Shenzhen, Guangdong, China.

Tel: (86) 755-26066440 Fax: (86) 755-26014772 Email: service@anbotek.com



Hotline  
400-003-0500  
www.anbotek.com



## 2. General Information

### 2.1 Client Information

Applicant	:	Winner Wave Limited
Address	:	Unit 1615 Peninsula Tower, 538 Castle Peak Road, Lai Chi Kok, Kowloon, Hong Kong
Manufacturer	:	Actions Microelectronics Co., Ltd.
Address	:	201, No.9 Building, Software Park, KeJiZhongEr Road, GaoXinQu, NanShan, Shenzhen, China

### 2.2 Description of Equipment Under Test (EUT)

Product Name	:	EZC-5601
Model No.	:	EZC-5601, RBT-5600
Trade Mark	:	EZCast, RedBirdtek
Test Power Supply	:	DC 5V From PC
Product Description	Operation Frequency:	5.2GWiFi: 5180MHz~5240MHz 5.8GWiFi: 5745MHz~5850MHz 2.4GWiFi: 2412-2462MHz
	Modulation Type:	OFDM with BPSK/QPSK/16QAM/64QAM/256QAM
	Antenna Type:	Internal Antenna
<b>Remark:</b> 1) For a more detailed features description, please refer to the manufacturer's specifications or the User's Manual.		

#### Shenzhen Anbotech Compliance Laboratory Limited

Address: 1/F., Building D, Sogood Science and Technology Park, Sanwei Community, Hangcheng Street, Bao'an District, Shenzhen, Guangdong, China.

Tel: (86) 755-26066440 Fax: (86) 755-26014772 Email: service@anbotech.com



Hotline  
400-003-0500  
www.anbotech.com

## 2.3 Device Category and SAR Limits

This device belongs to portable device category because its radiating structure is allowed to be used within 20 centimeters of the body of the user. Limit for General Population/Uncontrolled exposure should be applied for this device, it is 1.6 W/kg as averaged over any 1 gram of tissue.

## 2.4 Applied Standard

The Specific Absorption Rate (SAR) testing specification, method, and procedure for this device is in accordance with the following standards:

- FCC 47 CFR Part 2 (2.1093:2013)
- ANSI/IEEE C95.1:2005
- IEEE Std 1528:2013
- KDB 865664 D01 SAR Measurement 100 MHz to 6 GHz v01r04
- KDB 865664 D02 RF Exposure Reporting v01r02
- KDB 447498 D01 General RF Exposure Guidance v06
- KDB248227 D01 802.11 Wi-Fi SAR v02r02
- KDB941225 D01 3G SAR Procedures v03r01
- KDB 941225 D05 SAR for LTE Devices v02r05
- KDB 941225 D06 Hotspot SAR v02r01
- KDB648474 D04 Handset SAR v01r03

## 2.5 Environment of Test Site

Items	Required	Actual
Temperature (°C)	18-25	22~23
Humidity (%RH)	30-70	55~65

## 2.6 Test Configuration

For WIFI SAR testing, engineering testing software installed on the EUT can provide continuous transmitting RF signal.

### Shenzhen Anbotek Compliance Laboratory Limited

Address: 1/F., Building D, Sogood Science and Technology Park, Sanwei Community, Hangcheng Street, Bao'an District, Shenzhen, Guangdong, China.

Tel: (86) 755-26066440 Fax: (86) 755-26014772 Email: service@anbotek.com



Hotline  
400-003-0500  
www.anbotek.com



### 3. Specific Absorption Rate (SAR)

#### 3.1 Introduction

SAR is related to the rate at which energy is absorbed per unit mass in an object exposed to a radio field. The SAR distribution in a biological body is complicated and is usually carried out by experimental techniques or numerical modeling. The standard recommends limits for two tiers of groups, occupational/controlled and general population/uncontrolled, based on a person's awareness and ability to exercise control over his or her exposure. In general, occupational/controlled exposure limits are higher than the limits for general population/uncontrolled.

#### 3.2 SAR Definition

The SAR definition is the time derivative (rate) of the incremental energy (dW) absorbed by (dissipated in) an incremental mass (dm) contained in a volume element (dv) of a given density (ρ). The equation description is as below:

$$\text{SAR} = \frac{d}{dt} \left( \frac{dW}{dm} \right) = \frac{d}{dt} \left( \frac{dW}{\rho dv} \right)$$

SAR is expressed in units of Watts per kilogram (W/kg)

SAR measurement can be either related to the temperature elevation in tissue by

$$\text{SAR} = C \left( \frac{\delta T}{\delta t} \right)$$

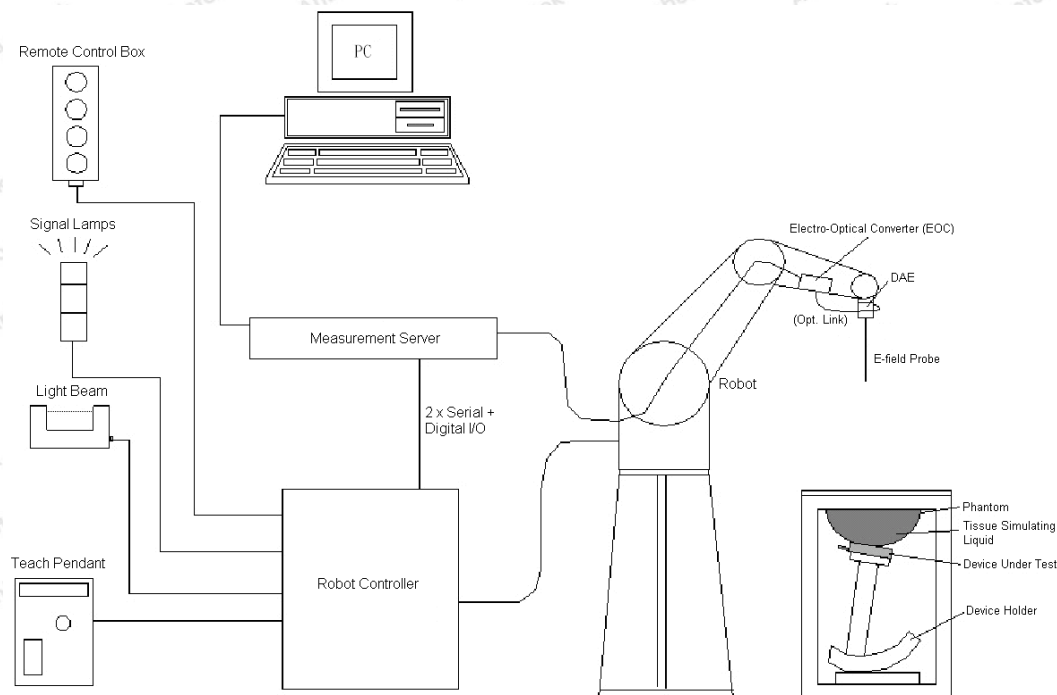
Where: C is the specific heat capacity, δT is the temperature rise and δt is the exposure duration, or related to the electrical field in the tissue by

$$\text{SAR} = \frac{\sigma |E|^2}{\rho}$$

Where: σ is the conductivity of the tissue, ρ is the mass density of the tissue and E is the RMS electrical field strength.

However for evaluating SAR of low power transmitter, electrical field measurement is typically applied.

## 4. SAR Measurement System



### DASY System Configurations

The DASYsystem for performance compliance tests is illustrated above graphically. This system consists of the following items:

- A standard high precision 6-axis robot with controller, a teach pendant and software
- A data acquisition electronic (DAE) attached to the robot arm extension
- A dosimetric probe equipped with an optical surface detector system
- The electro-optical converter (EOC) performs the conversion between optical and electrical signals
- A measurement server performs the time critical tasks such as signal filtering, control of the robot operation and fast movement interrupts.
- A probe alignment unit which improves the accuracy of the probe positioning
- A computer operating Windows XP
- DASY software
- Remote control with teach pendant and additional circuitry for robot safety such as warning lamps, etc.
- The SAM twin phantom
- A device holder
- Tissue simulating liquid

### Shenzhen Anbotek Compliance Laboratory Limited

Address: 1/F., Building D, Sogood Science and Technology Park, Sanwei Community, Hangcheng Street, Bao'an District, Shenzhen, Guangdong, China.

Tel: (86) 755-26066440 Fax: (86) 755-26014772 Email: service@anbotek.com



Hotline  
400-003-0500  
www.anbotek.com

- Dipole for evaluating the proper functioning of the system

components are described in details in the following sub-sections.

#### 4. 1 E-Field Probe

The SAR measurement is conducted with the dosimetric probe (manufactured by SPEAG). The probe is specially designed and calibrated for use in liquid with high permittivity. The dosimetric probe has special calibration in liquid at different frequency. This probe has a built in optical surface detection system to prevent from collision with phantom.

##### ➤ E-Field Probe Specification

###### <EX3DV4 Probe>


<b>Construction</b>	Symmetrical design with triangular core Built-in shielding against static charges PEEK enclosure material (resistant to organic solvents, e.g., DGBE)	
<b>Frequency</b>	10 MHz to 6 GHz; Linearity: $\pm 0.2$ dB	
<b>Directivity</b>	$\pm 0.3$ dB in HSL (rotation around probe axis) $\pm 0.5$ dB in tissue material (rotation normal to probe axis)	
<b>Dynamic Range</b>	10 $\mu$ W/g to 100 mW/g; Linearity: $\pm 0.2$ dB (noise: typically $< 1$ $\mu$ W/g)	
<b>Dimensions</b>	Overall length: 330 mm (Tip: 20 mm) Tip diameter: 2.5 mm (Body: 12 mm) Typical distance from probe tip to dipole centers: 1 mm	

Photo of EX3DV4

##### ➤ E-Field Probe Calibration

Each probe needs to be calibrated according to a dosimetric assessment procedure with accuracy better than  $\pm 10\%$ . The spherical isotropy shall be evaluated and within  $\pm 0.25$  dB. The sensitivity parameters (NormX, NormY, and NormZ), the diode compression parameter (DCP) and the conversion factor (ConvF) of the probe are tested. The calibration data can be referred to appendix C of this report.

#### 4. 2 Data Acquisition Electronics (DAE)

The data acquisition electronics (DAE) consists of a highly sensitive electrometer-grade preamplifier with auto-zeroing, a channel and gain-switching multiplexer, a fast 16 bit AD-converter and a command decoder and control logic unit. Transmission to the measurement server is

#### Shenzhen Anbotek Compliance Laboratory Limited

Address: 1/F., Building D, Sogood Science and Technology Park, Sanwei Community, Hangcheng Street, Bao'an District, Shenzhen, Guangdong, China.

Tel: (86) 755-26066440 Fax: (86) 755-26014772 Email: service@anbotek.com



Hotline  
400-003-0500  
www.anbotek.com



accomplished through an optical downlink for data and status information as well as an optical uplink for commands and the clock.

The input impedance of the DAE is 200MΩ; the inputs are symmetrical and floating. Common mode rejection is above 80dB.



**Photo of DAE**

#### **4. 3 Robot**

The SPEAG DASY system uses the high precision robots (DASY5: TX60XL) type from Stäubli SA (France). For the 6-axis controllersystem, the robot controller version (DASY5: CS8c) from Stäubli is used. The Stäubli robot series have many features that are important for our application:

- High precision (repeatability  $\pm 0.035$  mm)
- High reliability (industrial design)
- Jerk-free straight movements
- Low ELF interference (the closed metallic construction shields against motor control fields)



**Photo of DASY5**

#### **Shenzhen Anbotek Compliance Laboratory Limited**

Address: 1/F., Building D, Sogood Science and Technology Park, Sanwei Community, Hangcheng Street, Bao'an District, Shenzhen, Guangdong, China.

Tel: (86) 755-26066440 Fax: (86) 755-26014772 Email: service@anbotek.com



Hotline

400-003-0500

[www.anbotek.com](http://www.anbotek.com)

4. 4 Measurement Server

The measurement server is based on a PC/104 CPU board with CPU (DASY5: 400 MHz, Intel Celeron), chipdisk (DASY5: 128 MB), RAM (DASY5: 128 MB). The necessary circuits for communication with the DAE electronic box, as well as the 16 bit AD converter system for optical detection and digital I/O interface are contained on the DASY I/O board, which is directly connected to the PC/104 bus of the CPU board.

The measurement server performs all the real-time data evaluation for field measurements and surface detection, controls robot movements and handles safety operations.



Photo of Server for DASY5

4. 5 Phantom

<SAM Twin Phantom>

Shell Thickness	2 ± 0.2 mm; Center ear point: 6 ± 0.2 mm
Filling Volume	Approx. 25 liters
Dimensions	Length: 1000 mm; Width: 500 mm; Height: adjustable feet
Measurement Areas	Left Hand, Right Hand, Flat Phantom



Photo of SAM Phantom

The bottom plate contains three pair of bolts for locking the device holder. The device holder positions are adjusted to the standard measurement positions in the three sections. A white cover is provided to tap the phantom during off-periods to prevent water evaporation and changes in the liquid parameters. On the phantom top, three reference markers are provided to identify the phantom position with respect to the robot.

<ELI4 Phantom>



Shell Thickness	2 ± 0.2 mm (sagging: <1%)	
Filling Volume	Approx. 30 liters	
Dimensions	Major ellipse axis: 600 mm Minor axis: 400 mm	

Photo of ELI4 Phantom

The ELI4 phantom is intended for compliance testing of handheld and body-mounted wireless devices in the frequency range of 30 MHz to 6 GHz. ELI4 is fully compatible with standard and all known tissue simulating liquids.

Shenzhen Anbotech Compliance Laboratory Limited

Address: 1/F., Building D, Sogood Science and Technology Park, Sanwei Community, Hangcheng Street, Bao'an District, Shenzhen, Guangdong, China.  
Tel: (86) 755-26066440    Fax: (86) 755-26014772    Email: service@anbotech.com


Hotline  
400-003-0500  
[www.anbotech.com](http://www.anbotech.com)



#### 4.6 Device Holder

The SAR in the phantom is approximately inversely proportional to the square of the distance between the source and the liquid surface. For a source at 5 mm distance, a positioning uncertainty of  $\pm 0.5\text{mm}$  would produce a SAR uncertainty of  $\pm 20\%$ . Accurate device positioning is therefore crucial for accurate and repeatable measurements. The positions in which the devices must be measured are defined by the standards.

The DASY device holder is designed to cope with different positions given in the standard. It has two scales for the device rotation (with respect to the body axis) and the device inclination (with respect to the line between the ear reference points). The rotation center for both scales is the ear reference point (ERP). Thus the device needs no repositioning when changing the angles.

The DASY device holder is constructed of low-loss POM material having the following dielectric parameters: relative permittivity  $\epsilon = 3$  and loss tangent  $\delta = 0.02$ . The amount of dielectric material has been reduced in the closest vicinity of the device, since measurements have suggested that the influence of the clamp on the test results could thus be lowered.



**Device Holder**

#### Shenzhen Anbotek Compliance Laboratory Limited

Address: 1/F., Building D, Sogood Science and Technology Park, Sanwei Community, Hangcheng Street, Bao'an District, Shenzhen, Guangdong, China.

Tel: (86) 755-26066440 Fax: (86) 755-26014772 Email: service@anbotek.com



Hotline  
400-003-0500  
www.anbotek.com

## 4. 7 Data Storage and Evaluation

### ➤ Data Storage

The DASY software stores the assessed data from the data acquisition electronics as raw data (in microvolt readings from the probe sensors), together with all the necessary software parameters for the data evaluation (probe calibration data, liquid parameters and device frequency and modulation data) in measurement files. The post-processing software evaluates the desired unit and format for output each time the data is visualized or exported. This allows verification of the complete software setup even after the measurement and allows correction of erroneous parameter settings. For example, if a measurement has been performed with an incorrect crest factor parameter in the device setup, the parameter can be corrected afterwards and the data can be reevaluated.

The measured data can be visualized or exported in different units or formats, depending on the selected probe type (e.g., [V/m], [A/m], [mW/g]). Some of these units are not available in certain situations or give meaningless results, e.g., a SAR-output in a non-lose media, will always be zero. Raw data can also be exported to perform the evaluation with other software packages.

### ➤ Data Evaluation

The DASY post-processing software (SEMCAD) automatically executes the following procedures to calculate the field units from the microvolt readings at the probe connector. The parameters used in the evaluation are stored in the configuration modules of the software:

<b>Probe parameters:</b>	- Sensitivity	Norm <sub>i</sub> , a <sub>i0</sub> , a <sub>i1</sub> , a <sub>i2</sub>
	- Conversion factor	ConvF <sub>i</sub>
	- Diode compression point	dcp <sub>i</sub>
<b>Device parameters:</b>	- Frequency	f
	- Crest factor	cf
<b>Media parameters:</b>	- Conductivity	σ
	- Density	ρ

These parameters must be set correctly in the software. They can be found in the component documents or they can be imported into the software from the configuration files issued for the DASY components. In the direct measuring mode of the multi-meter option, the parameters of the actual system setup are used. In the scan visualization and export modes, the parameters stored in the corresponding document files are used.

The first step of the evaluation is a linearization of the filtered input signal to account for the compression characteristics of the detector diode. The compensation depends on the input signal, the diode type and the DC-transmission factor from the diode to the evaluation electronics. If the exciting field is pulsed, the crest factor of the signal must be known to correctly compensate for peak power.

## Shenzhen Anbotek Compliance Laboratory Limited



The formula for each channel can be given as:

$$V_i = U_i + U_i^2 \cdot \frac{cf}{dcp_i}$$

with  $V_i$  = compensated signal of channel i, (i = x, y, z)

$U_i$  = input signal of channel i, (i = x, y, z)

cf = crest factor of exciting field (DASY parameter)

dcp<sub>i</sub> = diode compression point (DASY parameter)

From the compensated input signals, the primary field data for each channel can be evaluated:

$$\text{E-field Probes: } E_i = \sqrt{\frac{V_i}{\text{Norm}_i \cdot \text{ConvF}}}$$

$$\text{H-field Probes: } H_i = \sqrt{V_i} \cdot \frac{a_{i0} + a_{i1}f + a_{i2}f^2}{f}$$

with  $V_i$  = compensated signal of channel i, (i = x, y, z)

Norm<sub>i</sub> = sensor sensitivity of channel i, (i = x, y, z),  $\mu\text{V}/(\text{V/m})^2$  for E-field Probes

ConvF = sensitivity enhancement in solution

$a_{ij}$  = sensor sensitivity factors for H-field probes

f = carrier frequency [GHz]

$E_i$  = electric field strength of channel i in V/m

$H_i$  = magnetic field strength of channel i in A/m

The RSS value of the field components gives the total field strength (Hermitian magnitude):

$$E_{\text{tot}} = \sqrt{E_x^2 + E_y^2 + E_z^2}$$

The primary field data are used to calculate the derived field units.

$$\text{SAR} = E_{\text{tot}}^2 \cdot \frac{\sigma}{\rho \cdot 1000}$$

with SAR = local specific absorption rate in mW/g

$E_{\text{tot}}$  = total field strength in V/m

$\sigma$  = conductivity in [mho/m] or [Siemens/m]

$\rho$  = equivalent tissue density in g/cm<sup>3</sup>

Note that the density is set to 1, to account for actual head tissue density rather than the density of the tissue simulating liquid.



## 5. Test Equipment List

Manufacturer	Name of Equipment	Type/Model	Serial Number	Calibration	
				Last Cal.	Due Date
SPEAG	2450MHz System Validation Kit	D2450V2	910	Jun 15,2021	Jun. 14,2024
SPEAG	5GHz System Validation Kit	D5GHzV2	1160	Oct. 02, 2021	Oct. 01, 2024
SPEAG	Data Acquisition Electronics	DAE4	387	Sept.06,2021	Sept.05,2022
SPEAG	Dosimetric E-Field Probe	EX3DV4	7396	May 06,2022	May 05,2023
Agilent	ENA Series Network Analyzer	E5071C	MY46317418	Oct.22, 2021	Oct.21, 2022
SPEAG	DAK	DAK-3.5	1226	NCR	NCR
SPEAG	ELI Phantom	QDOVA004AA	2058	NCR	NCR
AR	Amplifier	ZHL-42W	QA1118004	NCR	NCR
Agilent	Power Meter	N1914A	MY50001102	NCR	NCR
Agilent	Power Sensor	N8481H	MY51240001	Oct.22, 2021	Oct.21, 2022
R&S	Spectrum Analyzer	N9020A	MY51170037	Oct.22, 2021	Oct.21, 2022
Agilent	Signal Generation	N5182A	MY48180656	Oct.22, 2021	Oct.21, 2022
Worken	Directional Coupler	0110A05601O-10	COM5BNW1A2	Oct.22, 2021	Oct.21, 2022

### Note:

1. The calibration certificate of DASY can be referred to appendix C of this report.
2. The dipole calibration interval can be extended to 3 years with justification. The dipoles are also not physically damaged, or repaired during the interval.
3. The Insertion Loss calibration of Dual Directional Coupler and Attenuator were characterized via the network analyzer and compensated during system check.
4. The dielectric probe kit was calibrated via the network analyzer, with the specified procedure (calibrated in pure water) and calibration kit (standard) short circuit, before the dielectric measurement. The specific procedure and calibration kit are provided by Agilent.
5. In system check we need to monitor the level on the power meter, and adjust the power amplifier level to have precise power level to the dipole; the measured SAR will be normalized to 1W input power according to the ratio of 1W to the input power to the dipole. For system check, the calibration of the power amplifier is deemed not critically required for correct measurement; the power meter is critical and we do have calibration for it

### Shenzhen Anbotek Compliance Laboratory Limited

Address: 1/F., Building D, Sogood Science and Technology Park, Sanwei Community, Hangcheng Street, Bao'an District, Shenzhen, Guangdong, China.

Tel: (86) 755-26066440 Fax: (86) 755-26014772 Email: service@anbotek.com



Hotline  
400-003-0500  
www.anbotek.com

## 6. Tissue Simulating Liquids

For the measurement of the field distribution inside the SAM phantom with DASY, the phantom must be filled with around 25 liters of homogeneous body tissue simulating liquid. For head SAR testing, the liquid height from the ear reference point (ERP) of the phantom to the liquid top surface is larger than 15 cm, which is shown in Fig. 6.1. For body SAR testing, the liquid height from the center of the flat phantom to the liquid top surface is larger than 15 cm, which is shown as followed:



**Photo of Liquid Height for Body SAR**

The following table gives the recipes for tissue simulating liquid.

Frequency (MHz)	Water (%)	Sugar (%)	Cellulose (%)	Salt (%)	Prevento I (%)	DGBE (%)	Conductivity ( $\sigma$ )	Permittivity ( $\epsilon_r$ )
<b>For Body</b>								
2450	68.6	0	0	0	0	31.4	1.95	52.7
5000	78.6	0	10.7	0	10.7	0	6.00	48.2

The following table shows the measuring results for simulating liquid.

Tissue Type	Measured Frequency (MHz)	Target Tissue		Measured Tissue				Liquid Temp.( $^{\circ}$ C )	Test Date
		$\epsilon_r$	$\sigma$	$\epsilon_r$	Dev. (%)	$\sigma$	Dev. (%)		
2450	2450	52.7	1.95	50.68	-3.83	2.00	2.56	22.1	07/24/2022
5000	5200	48.20	6.00	47.22	-2.03	6.06	1	21.8	07/25/2022

### Shenzhen Anbotek Compliance Laboratory Limited

Address: 1/F., Building D, Sogood Science and Technology Park, Sanwei Community, Hangcheng Street, Bao'an District, Shenzhen, Guangdong, China.

Tel: (86) 755-26066440 Fax: (86) 755-26014772 Email: service@anbotek.com



Hotline  
400-003-0500  
www.anbotek.com

## 7. System Verification Procedures

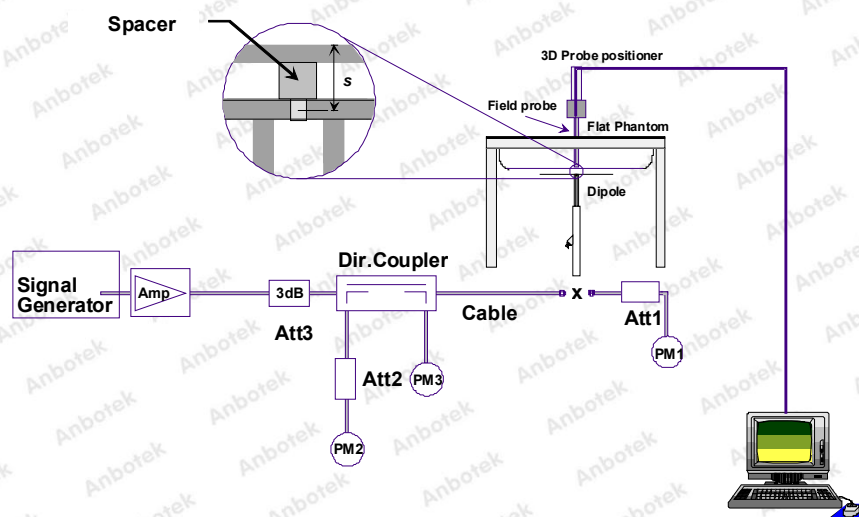
Each DASY system is equipped with one or more system validation kits. These units, together with the predefined measurement procedures within the DASY software, enable the user to conduct the system performance check and system validation. System validation kit includes a dipole, tripod holder to fix it underneath the flat phantom and a corresponding distance holder.

### ➤ Purpose of System Performance check

The system performance check verifies that the system operates within its specifications. System and operator errors can be detected and corrected. It is recommended that the system performance check be performed prior to any usage of the system in order to guarantee reproducible results. The system performance check uses normal SAR measurements in a simplified setup with a well characterized source. This setup was selected to give a high sensitivity to all parameters that might fail or vary over time. The system check does not intend to replace the calibration of the components, but indicates situations where the system uncertainty is exceeded due to drift or failure.

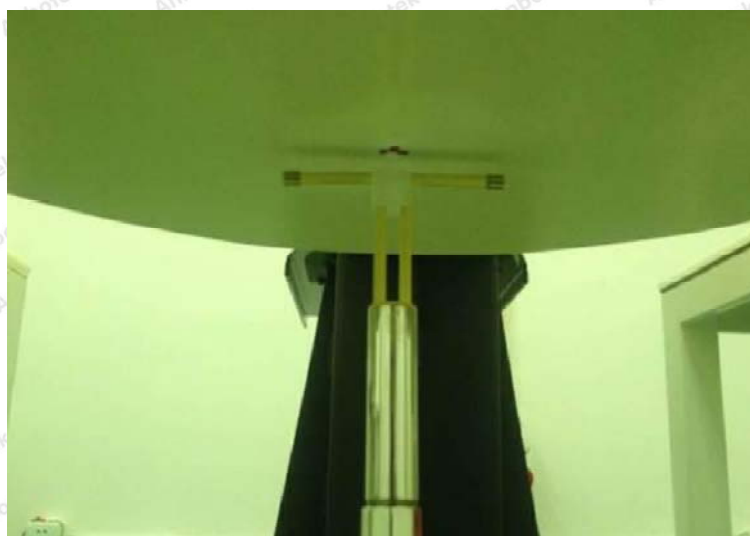
### ➤ System Setup

In the simplified setup for system evaluation, the EUT is replaced by a calibrated dipole and the power source is replaced by a continuous wave that comes from a signal generator. The calibrated dipole must be placed beneath the flat phantom section of the SAM twin phantom with the correct distance holder. The distance holder should touch the phantom surface with a light pressure at the reference marking and be oriented parallel to the long side of the phantom. The equipment setup is shown below:



**System Setup for System Evaluation**





**Photo of Dipole Setup**

### Validation Results

Comparing to the original SAR value provided by SPEAG, the verification data should be within its specification of 10%. The table below shows the target SAR and measured SAR after normalized to 1W input power. It indicates that the system performance check can meet the variation criterion and the plots can be referred to Appendix A of this report.

Frequency (MHz)	Liquid Type	Power fed onto reference dipole (mW)	Targeted SAR (W/kg)	Measured SAR (W/kg)	Normalized SAR (W/kg)	Deviation (%)	Test Date
2450	Head	250	52.4	12.92	51.68	-1.37	2022-07-24
5200	Head	100	80.7	8.45	84.50	4.71	2022-07-25

**Target and Measurement SAR after Normalized**

### Shenzhen Anbotek Compliance Laboratory Limited

Address: 1/F., Building D, Sogood Science and Technology Park, Sanwei Community, Hangcheng Street, Bao'an District, Shenzhen, Guangdong, China.

Tel: (86) 755-26066440 Fax: (86) 755-26014772 Email: service@anbotek.com



Hotline

400-003-0500

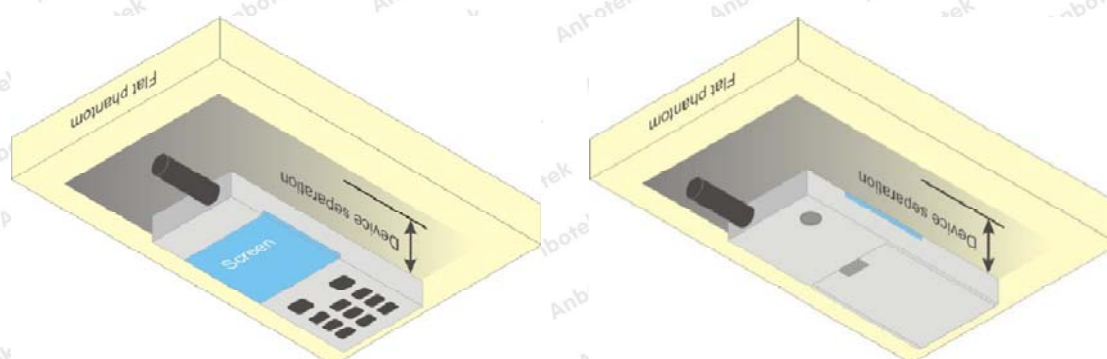
www.anbotek.com

## 8. EUT Testing Position

### 8.1 Body Worn Position

Body-worn operating configurations are tested with the belt-clips and holsters attached to the device and positioned against a flat phantom in a normal use configuration. Per KDB 648474 D04, body-worn accessory exposure is typically related to voice mode operations when handsets are carried in body-worn accessories. The body-worn accessory procedures in FCC KDB 447498 D01 v06, 2015 should be used to test for body-worn accessory SAR compliance, without a headset connected to it. This enables the test results for such configuration to be compatible with that required for hotspot mode when the body-worn accessory test separation distance is greater than or equal to that required for hotspot mode, when applicable. When the reported SAR for body-worn accessory, measured without a headset connected to the handset is  $< 1.2 \text{ W/kg}$ , the highest reported SAR configuration for that wireless mode and frequency band should be repeated for that body-worn accessory with a handset attached to the handset.

Accessories for body-worn operation configurations are divided into two categories: those that do not contain metallic components and those that do contain metallic components. When multiple accessories that do not contain metallic components are supplied with the device, the device is tested with only the accessory that dictates the closest spacing to the body. Then multiple accessories that contain metallic components are tested with the device with each accessory. If multiple accessories share an identical metallic component (i.e. the same metallic belt-clip used with different holsters with no other metallic components) only the accessory that dictates the closest spacing to the body is tested.



**Body Worn Position**



## 9. Measurement Procedures

The measurement procedures are as follows:

- (a) Use base station simulator (if applicable) or engineering software to transmit RF power continuously (continuous Tx) in the middle channel.
- (b) Keep EUT to radiate maximum output power or 100% duty factor (if applicable)
- (c) Measure output power through RF cable and power meter.
- (d) Place the EUT in the positions as setup photos demonstrates.
- (e) Set scan area, grid size and other setting on the DASY software.
- (f) Measure SAR transmitting at the middle channel for all applicable exposure positions.
- (g) Identify the exposure position and device configuration resulting the highest SAR
- (h) Measure SAR at the lowest and highest channels at the worst exposure position and device configuration if applicable.

According to the test standard, the recommended procedure for assessing the peak spatial-average SAR value consists of the following steps:

- (a) Power reference measurement
- (b) Area scan
- (c) Zoom scan
- (d) Power drift measurement

### 9.1 Spatial Peak SAR Evaluation

The procedure for spatial peak SAR evaluation has been implemented according to the test standard. It can be conducted for 1g and 10g, as well as for user-specific masses. The DASY software includes all numerical procedures necessary to evaluate the spatial peak SAR value.

The base for the evaluation is a "cube" measurement. The measured volume must include the 1g and 10g cubes with the highest averaged SAR values. For that purpose, the center of the measured volume is aligned to the interpolated peak SAR value of a previously performed area scan.

The entire evaluation of the spatial peak values is performed within the post-processing engine (SEMCAD). The system always gives the maximum values for the 1g and 10g cubes. The algorithm to find the cube with highest averaged SAR is divided into the following stages:

- (a) Extraction of the measured data (grid and values) from the Zoom Scan
- (b) Calculation of the SAR value at every measurement point based on all stored data (A/D values and measurement parameters)
- (c) Generation of a high-resolution mesh within the measured volume

#### Shenzhen Anbotek Compliance Laboratory Limited

Address: 1/F., Building D, Sogood Science and Technology Park, Sanwei Community, Hangcheng Street, Bao'an District, Shenzhen, Guangdong, China.

Tel: (86) 755-26066440 Fax: (86) 755-26014772 Email: service@anbotek.com



Hotline  
400-003-0500  
www.anbotek.com



- (d) Interpolation of all measured values from the measurement grid to the high-resolution grid
- (e) Extrapolation of the entire 3-D field distribution to the phantom surface over the distance from sensor to surface
- (f) Calculation of the averaged SAR within masses of 1g and 10g

## 9.2 Power Reference Measurement

The Power Reference Measurement and Power Drift Measurements are for monitoring the power drift of the device under test in the batch process. The minimum distance of probe sensors to surface determines the closest measurement point to phantom surface. This distance cannot be smaller than the distance of sensor calibration points to probe tip as defined in the probe properties.

## 9.3 Area Scan Procedures

The area scan is used as a fast scan in two dimensions to find the area of high field values, before doing a fine measurement around the hot spot. The sophisticated interpolation routines implemented in DASY software can find the maximum found in the scanned area, within a range of the global maximum. The range (in dB) is specified in the standards for compliance testing. For example, a 2 dB range is required in IEEE standard 1528 and IEC 62209 standards, whereby 3 dB is a requirement when compliance is assessed in accordance with the ARIB standard (Japan), if only one zoom scan follows the area scan, then only the absolute maximum will be taken as reference. For cases where multiple maximums are detected, the number of zoom scans has to be increased accordingly.

Area scan parameters extracted from FCC KDB 865664 D01 SAR measurement 100 MHz to 6 GHz.

	$\leq 3$ GHz	$> 3$ GHz
Maximum distance from closest measurement point (geometric center of probe sensors) to phantom surface	$5 \pm 1$ mm	$\frac{1}{2} \cdot \delta \cdot \ln(2) \pm 0.5$ mm
Maximum probe angle from probe axis to phantom surface normal at the measurement location	$30^\circ \pm 1^\circ$	$20^\circ \pm 1^\circ$
Maximum area scan spatial resolution: $\Delta x_{\text{Area}}$ , $\Delta y_{\text{Area}}$	$\leq 2$ GHz: $\leq 15$ mm 2 – 3 GHz: $\leq 12$ mm	3 – 4 GHz: $\leq 12$ mm 4 – 6 GHz: $\leq 10$ mm
	When the x or y dimension of the test device, in the measurement plane orientation, is smaller than the above, the measurement resolution must be $\leq$ the corresponding x or y dimension of the test device with at least one measurement point on the test device.	

### Shenzhen Anbotek Compliance Laboratory Limited

Address: 1/F., Building D, Sogood Science and Technology Park, Sanwei Community, Hangcheng Street, Bao'an District, Shenzhen, Guangdong, China.

Tel: (86) 755-26066440 Fax: (86) 755-26014772 Email: service@anbotek.com



Hotline  
400-003-0500  
www.anbotek.com

#### 9.4 Zoom Scan Procedures

Zoom scans are used to assess the peak spatial SAR values within a cubic averaging volume containing 1 gram and 10gram of simulated tissue. The zoom scan measures points (refer to table below) within a cube whose base faces are centered on the maxima found in a preceding area scan job within the same procedure. When the measurement is done, the zoom scan evaluates the averaged SAR for 1 gram and 10 gram and displays these values next to the job's label.

Zoom scan parameters extracted from FCC KDB 865664 D01 SAR measurement 100 MHz to 6 GHz.

			≤ 3 GHz	> 3 GHz
Maximum zoom scan spatial resolution: $\Delta x_{\text{Zoom}}, \Delta y_{\text{Zoom}}$			$\leq 2 \text{ GHz}: \leq 8 \text{ mm}$ $2 - 3 \text{ GHz}: \leq 5 \text{ mm}^*$	$3 - 4 \text{ GHz}: \leq 5 \text{ mm}^*$ $4 - 6 \text{ GHz}: \leq 4 \text{ mm}^*$
Maximum zoom scan spatial resolution, normal to phantom surface	uniform grid: $\Delta z_{\text{Zoom}}(n)$		$\leq 5 \text{ mm}$	$3 - 4 \text{ GHz}: \leq 4 \text{ mm}$ $4 - 5 \text{ GHz}: \leq 3 \text{ mm}$ $5 - 6 \text{ GHz}: \leq 2 \text{ mm}$
	graded grid	$\Delta z_{\text{Zoom}}(1)$ : between 1 <sup>st</sup> two points closest to phantom surface	$\leq 4 \text{ mm}$	$3 - 4 \text{ GHz}: \leq 3 \text{ mm}$ $4 - 5 \text{ GHz}: \leq 2.5 \text{ mm}$ $5 - 6 \text{ GHz}: \leq 2 \text{ mm}$
		$\Delta z_{\text{Zoom}}(n>1)$ : between subsequent points	$\leq 1.5 \cdot \Delta z_{\text{Zoom}}(n-1)$	
Minimum zoom scan volume	x, y, z		$\geq 30 \text{ mm}$	$3 - 4 \text{ GHz}: \geq 28 \text{ mm}$ $4 - 5 \text{ GHz}: \geq 25 \text{ mm}$ $5 - 6 \text{ GHz}: \geq 22 \text{ mm}$
Note: $\delta$ is the penetration depth of a plane-wave at normal incidence to the tissue medium; see draft standard IEEE P1528-2011 for details.				
* When zoom scan is required and the <u>reported</u> SAR from the <i>area scan based 1-g SAR estimation</i> procedures of KDB 447498 is $\leq 1.4 \text{ W/kg}$ , $\leq 8 \text{ mm}$ , $\leq 7 \text{ mm}$ and $\leq 5 \text{ mm}$ zoom scan resolution may be applied, respectively, for 2 GHz to 3 GHz, 3 GHz to 4 GHz and 4 GHz to 6 GHz.				

## 9.5 Volume Scan Procedures

The volume scan is used for assess overlapping SAR distributions for antennas transmitting in different frequency bands. It is equivalent to an oversized zoom scan used in standalone measurements. The measurement volume will be used to enclose all the simultaneous transmitting antennas. For antennas transmitting simultaneously in different frequency bands, the volume scan is measured separately in each frequency band. In order to sum correctly to compute the 1g aggregate SAR, the EUT remain in the same test position for all measurements and all volume scan use the same spatial resolution and grid spacing. When all volume scan were completed, the software, SEMCAD postprocessor can combine and subsequently superpose these measurement data to calculating the multiband SAR.

## 9.6 Power Drift Monitoring

All SAR testing is under the EUT install full charged battery and transmit maximum output power. In DASY measurement software, the power reference measurement and power drift measurement procedures are used for monitoring the power drift of EUT during SAR test. Both these procedures measure the field at a specified reference position before and after the SAR testing. The software will calculate the field difference in dB. If the power drift more than 5%, the SAR will be retested.

### Shenzhen Anbotek Compliance Laboratory Limited

Address: 1/F., Building D, Sogood Science and Technology Park, Sanwei Community, Hangcheng Street, Bao'an District, Shenzhen, Guangdong, China.

Tel: (86) 755-26066440 Fax: (86) 755-26014772 Email: service@anbotek.com



Hotline  
400-003-0500  
www.anbotek.com



## 10. Conducted Power

### <WLAN 2.4GHz Conducted Power>

Test Channel	Frequency	Maximum Peak Conducted Output Power (dBm)		
	(MHz)	Antenna port 1	Antenna port 2	MIMO
CH01	2412	16.76	21.96	/
CH06	2437	22.42	23.02	/
CH11	2462	19.92	22.93	/
CH01	2412	20.83	20.36	/
CH06	2437	21.58	22.03	/
CH11	2462	20.51	21.22	/
CH01	2412	20.34	20.75	23.56
CH06	2437	21.15	21.09	24.13
CH11	2462	21.96	22.14	25.06
CH03	2422	19.41	18.71	22.08
CH06	2437	20.57	20.18	23.39
CH09	2452	21.48	21.95	24.73
CH01	2412	20.05	20.21	23.14
CH06	2437	21.05	21.79	24.45
CH11	2462	22.08	22.39	25.25
CH03	2422	18.97	20.08	22.57
CH06	2437	20.78	21.36	24.09
CH09	2452	21.95	21.92	24.95

### Shenzhen Anbotek Compliance Laboratory Limited

Address: 1/F., Building D, Sogood Science and Technology Park, Sanwei Community, Hangcheng Street, Bao'an District, Shenzhen, Guangdong, China.

Tel: (86) 755-26066440 Fax: (86) 755-26014772 Email: service@anbotek.com



Hotline  
400-003-0500  
www.anbotek.com

## &lt;WIFI 5.2GHz Conducted Power&gt;

Mode	Test channel	Maximum Conducted Output Power (dBm)		
		Antenna port 1	Antenna port 2	MIMO
11a	CH36	9.47	10.37	/
11a	CH40	9.90	9.17	/
11a	CH48	9.85	9.08	/
11n(HT20)	CH36	7.65	9.52	11.70
11n(HT20)	CH40	8.05	9.57	11.89
11n(HT20)	CH48	7.67	9.10	11.45
11n(HT40)	CH38	9.52	9.78	12.66
11n(HT40)	CH46	8.84	9.63	12.26
11ac(HT20)	CH36	9.19	9.78	12.51
11ac(HT20)	CH40	9.24	9.88	12.58
11ac(HT20)	CH48	7.90	9.16	11.59
11ac(HT40)	CH38	9.55	10.27	12.94
11ac(HT40)	CH46	9.44	10.31	12.91
11ac(HT80)	CH42	9.25	10.03	13.04
11ax(HT20)	CH36	8.12	10.21	12.36
11ax(HT20)	CH40	8.28	9.19	11.77
11ax(HT20)	CH48	7.73	8.23	11.00
11ax(HT40)	CH38	8.40	8.44	11.43
11ax(HT40)	CH46	8.13	8.41	11.28
11ax(HT80)	CH42	8.63	9.15	11.91

## Shenzhen Anbotek Compliance Laboratory Limited

Address: 1/F., Building D, Sogood Science and Technology Park, Sanwei Community, Hangcheng Street, Bao'an District, Shenzhen, Guangdong, China.

Tel: (86) 755-26066440 Fax: (86) 755-26014772 Email: service@anbotek.com



Hotline  
400-003-0500  
www.anbotek.com

## &lt;WIFI 5.8GHz Conducted Power&gt;

Configuration Band IV (5725 - 5850 MHz )				
Mode	Test channel	Maximum Conducted Output Power (dBm)		
		Antenna port 1	Antenna port 2	MIMO
11a	CH149	10.20	11.31	/
11a	CH157	10.95	11.42	/
11a	CH165	11.26	11.69	/
11n(HT20)	CH149	10.20	11.32	13.81
11n(HT20)	CH157	10.95	11.03	14.41
11n(HT20)	CH165	11.00	11.16	14.63
11n(HT40)	CH151	10.95	11.67	14.90
11n(HT40)	CH159	11.03	11.53	14.85
11ac(HT20)	CH149	10.33	11.54	13.99
11ac(HT20)	CH157	10.00	11.14	13.62
11ac(HT20)	CH165	10.73	11.38	14.30
11ac(HT40)	CH151	10.78	11.03	13.92
11ac(HT40)	CH159	11.00	11.27	14.37
11ac(HT80)	CH155	10.52	11.36	14.12
11ax(HT20)	CH149	10.37	11.51	13.99
11ax(HT20)	CH157	10.86	11.54	14.22
11ax(HT20)	CH165	10.55	11.20	13.90
11ax(HT40)	CH151	11.21	11.38	14.31
11ax(HT40)	CH159	11.14	10.98	14.21
11ax(HT80)	CH155	11.04	11.43	14.60

## Shenzhen Anbotek Compliance Laboratory Limited

Address: 1/F., Building D, Sogood Science and Technology Park, Sanwei Community, Hangcheng Street, Bao'an District, Shenzhen, Guangdong, China.

Tel: (86) 755-26066440 Fax: (86) 755-26014772 Email: service@anbotek.com



Hotline  
400-003-0500  
www.anbotek.com



**Note:**

1. Per KDB 447498 D01, the 1-g SAR test exclusion thresholds for 100 MHz to 6 GHz at *test separation distances*  $\leq 50$  mm are determined by:

$$[(\text{max. power of channel, including tune-up tolerance, mW}) / (\text{min. test separation distance, mm})] \cdot [\sqrt{f(\text{GHz})}] \leq 3.0$$

for 1-g SAR, where

$f(\text{GHz})$  is the RF channel transmit frequency in GHz

Power and distance are rounded to the nearest mW and mm before calculation

The result is rounded to one decimal place for comparison

Mode	Frequency (GHz)	Maximum Conducted Output Power	Max. Tune-up Power (dBm)	Max. Power (mW)	Test distance (mm)	Result	exclusion thresholds for 1-g SAR
802.11b ANT.1	2437	22.42	22	158.49	5	49.48	3.0
802.11b ANT.2	2437	23.02	23	199.53	5	62.3	3.0
802.11a ANT.1	5200	9.90	9	7.94	5	3.62	3.0
802.11a ANT.2	5180	10.37	10	10.00	5	4.55	3.0
802.11a ANT.1	5825	11.26	11	12.59	5	6.08	3.0
802.11a ANT.2	5825	11.69	17	50.12	5	24.19	3.0

Base on the result of note1, RF exposure evaluation of 2.4GWIFI (ANT.1,ANT.2), 5.2G/5.8WIFI (ANT.1,ANT.2) mode is required.

3. Per KDB 248227 D01, choose the highest output power channel to test SAR and determine further SAR exclusion.

4. Per KDB 248227 D01, In the 2.4 GHz band, separate SAR procedures are applied to DSSS and OFDM configurations to simplify DSSS test requirements. SAR is not required for the following 2.4 GHz OFDM conditions:

1) When KDB Publication 447498 SAR test exclusion applies to the OFDM configuration.

2) When the highest reported SAR for DSSS is adjusted by the ratio of OFDM to DSSS specified maximum output power and the adjusted SAR is  $\leq 1.2$  W/kg.

DSSS SAR value\* (OFDM power/DSSS power) .

2.4GWIFI ANT.1:  $0.333 \text{ W/kg} * (161.44 \text{ mW}/174.58 \text{ mW}) = 0.308 \text{ W/kg}$

2.4GWIFI ANT.2:  $0.305 \text{ W/kg} * (173.38 \text{ mW}/200.45 \text{ mW}) = 0.261 \text{ W/kg}$

5.2GWIFI ANT.1:  $0.296 \text{ W/kg} * (9.02 \text{ mW}/9.77 \text{ mW}) = 0.273 \text{ W/kg}$

### Shenzhen Anbotek Compliance Laboratory Limited

Address: 1/F., Building D, Sogood Science and Technology Park, Sanwei Community, Hangcheng Street, Bao'an District, Shenzhen, Guangdong, China.

Tel: (86) 755-26066440 Fax: (86) 755-26014772 Email: service@anbotek.com



Hotline  
400-003-0500  
www.anbotek.com

5.2GWIFI ANT.2:  $0.357 \text{ W/kg} \times (10.74 \text{ mW}/10.89 \text{ mW}) = 0.352 \text{ W/kg}$

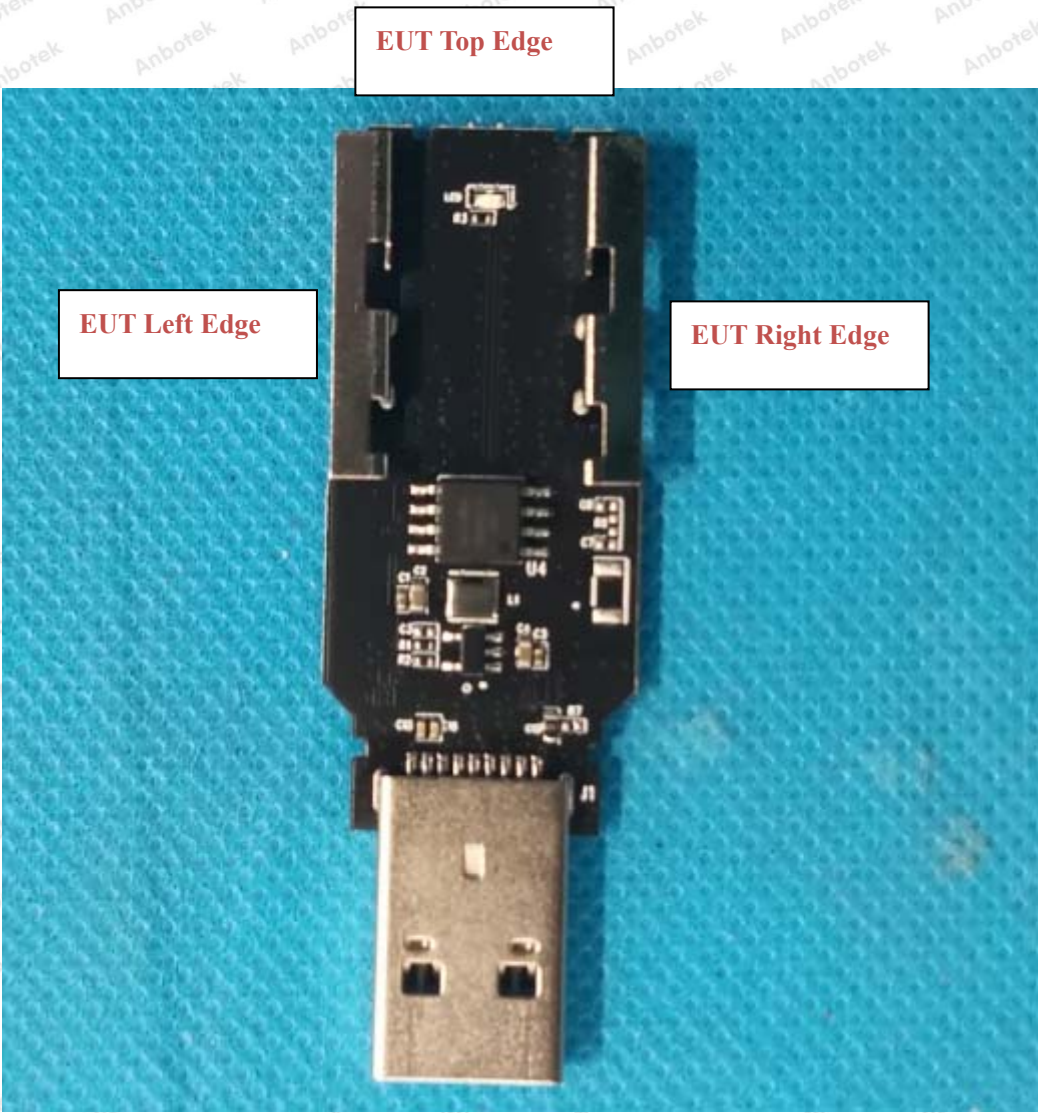
5.8GWIFI ANT.1:  $0.310 \text{ W/kg} \times (13.21 \text{ mW}/13.37 \text{ mW}) = 0.306 \text{ W/kg}$

5.8GWIFI ANT.2:  $0.302 \text{ W/kg} \times (14.69 \text{ mW}/14.76 \text{ mW}) = 0.301 \text{ W/kg}$

All the results  $\leq 1.2 \text{ W/kg}$ , so the ratio of OFDM is not required RF exposure evaluation.



# 11. Antenna Location



EUT Bottom Edge

EUT BACK VIEW

Distance of The Antenna to the EUT surface and edge						
Antennas	Front	Back	Top Side	Bottom Side	Left Side	Right Side
WLAN1	<25mm	<25mm	>25mm	<25mm	<25mm	<25mm
WLAN2	<25mm	<25mm	>25mm	<25mm	<25mm	<25mm

**Shenzhen Anbotek Compliance Laboratory Limited**

Address: 1/F., Building D, Sogood Science and Technology Park, Sanwei Community, Hangcheng Street, Bao'an District, Shenzhen, Guangdong, China.  
Tel: (86) 755-26066440    Fax: (86) 755-26014772    Email: service@anbotek.com

 Hotline  
400-003-0500  
www.anbotek.com



Positions for SAR tests; Hotspot mode						
Antennas	Front	Back	Top Side	Bottom Side	Left Side	Right Side
WLAN1	Yes	Yes	No	Yes	Yes	Yes
WLAN2	Yes	Yes	No	Yes	Yes	Yes

**General Note:** Referring to KDB 941225 D06, When the overall device length and width are  $\geq 9\text{cm} \times 5\text{cm}$ , the test distance is 10mm, SAR must be measured for all sides and surfaces with a transmitting antenna located with 25mm from that surface or edge.

#### Shenzhen Anbotek Compliance Laboratory Limited

Address: 1/F., Building D, Sogood Science and Technology Park, Sanwei Community, Hangcheng Street, Bao'an District, Shenzhen, Guangdong, China.

Tel: (86) 755-26066440 Fax: (86) 755-26014772 Email: service@anbotek.com



Hotline  
400-003-0500  
www.anbotek.com

## 12. SAR Test Results Summary

General Note:

- Per KDB 447498 D01 v06, 2015, the reported SAR is the measured SAR value adjusted for maximum tune-up tolerance.

*Scaling Factor = tune-up limit power (mW) / EUT RF power (mW), where tune-up limit is the maximum rated power among all production units.*

*Reported SAR(W/kg)= Measured SAR(W/kg)\* Scaling Factor*

- Per KDB 447498 D01 v06, 2015, for each exposure position, if the highest output channel reported SAR≤0.8W/kg, other channels SAR testing are not necessary
- Per KDB865664 D01, for each frequency band, repeated SAR measurement is required only when the measured SAR is ≥0.8W/Kg; if the deviation among the repeated measurement is ≤20%,and the measured SAR <1.45W/Kg, only one repeated measurement is required.
- When the user enables the personal Wireless router functions for the handsets, actual operationsinclude simultaneous transmission of both the Wi-Fi transmitting frequency and thus cannot beevaluated for SAR under actual use conditions. The “Portable Hotspot” feature on the handset was NOT activated, to ensure the SAR measurements were evaluated for a single transmissionfrequency RF signal.

Plot No.	Band	Mode	Test Position	Gap (cm)	Freq. (MHz)	Average Power (dBm)	Tune-Up Limit (dBm)	Scaling Factor	Power Drift (dB)	Measured SAR <sub>1g</sub> (W/kg)	Reported SAR <sub>1g</sub> (W/kg)
	WIFI 2.4GHz ANT.1	b	Front	0	2437	22.42	23	1.259	0.10	0.273	0.344
#1	WIFI 2.4GHz ANT.1	b	Back	0	2437	22.42	23	1.259	0.08	0.333	<b>0.419</b>
	WIFI 2.4GHz ANT.1	b	Left Side	0	2437	22.42	23	1.259	0.05	0.261	0.329
	WIFI 2.4GHz ANT.1	b	Right Side	0	2437	22.42	23	1.259	0.05	0.263	0.331
	WIFI 2.4GHz ANT.1	b	Top Side	0	2437	22.42	23	1.259	0.06	0.041	0.052
	WIFI 2.4GHz ANT.2	b	Front	0	2437	23.02	24	1.042	0.10	0.214	0.223
#2	WIFI 2.4GHz ANT.2	b	Back	0	2437	23.02	24	1.042	0.09	0.305	<b>0.318</b>
	WIFI 2.4GHz ANT.2	b	Right Side	0	2437	23.02	24	1.042	0.06	0.202	0.210
	WIFI 2.4GHz ANT.2	b	Left Side	0	2437	23.02	24	1.042	0.07	0.215	0.212
	WIFI 2.4GHz ANT.2	b	Top Side	0	2437	23.02	24	1.042	0.05	0.194	0.202
	WIFI 5.2GHz ANT.1	a	Front	0	5200	9.90	10	1.01	-0.08	0.163	0.165

### Shenzhen Anbotek Compliance Laboratory Limited

Address: 1/F., Building D, Sogood Science and Technology Park, Sanwei Community, Hangcheng Street, Bao'an District, Shenzhen, Guangdong, China.

Tel:(86) 755-26066440 Fax: (86) 755-26014772 Email: service@anbotek.com



Hotline  
400-003-0500  
www.anbotek.com

#3	WIFI 5.2GHz ANT.1	a	Back	0	5200	9.90	10	1.01	-0.04	0.296	<b>0.299</b>
	WIFI 5.2GHz ANT.1	a	Left Side	0	5200	9.90	10	1.01	0.05	0.148	0.149
	WIFI 5.2GHz ANT.1	a	Right Side	0	5200	9.90	10	1.01	0.04	0.123	0.124
	WIFI 5.2GHz ANT.1	a	Top Side	0	5200	9.90	10	1.01	0.03	0.132	0.133
	WIFI 5.2GHz ANT.2	a	Front	0	5150	10.37	11	1.061	0.11	0.289	0.307
#4	WIFI 5.2GHz ANT.2	a	Back	0	5150	10.37	11	1.061	-0.01	0.357	<b>0.379</b>
	WIFI 5.2GHz ANT.2	a	Right Side	0	5150	10.37	11	1.061	-0.15	0.277	0.294
	WIFI 5.2GHz ANT.2	a	Left Side	0	5150	10.37	11	1.061	0.14	0.205	0.218
	WIFI 5.2GHz ANT.2	a	Top Side	0	5150	10.37	11	1.061	0.12	0.238	0.253
	WIFI 5.8GHz ANT.1	a	Front	0	5825	11.26	12	1.066	0.88	0.234	0.249
#5	WIFI 5.8GHz ANT.1	a	Back	0	5825	11.26	12	1.066	0.12	0.310	<b>0.330</b>
	WIFI 5.8GHz ANT.1	a	Left Side	0	5825	11.26	12	1.066	0.10	0.229	0.244
	WIFI 5.8GHz ANT.1	a	Right Side	0	5825	11.26	12	1.066	0.06	0.216	0.230
	WIFI 5.8GHz ANT.1	a	Top Side	0	5825	11.26	12	1.066	0.04	0.206	0.220
	WIFI 5.8GHz ANT.2	a	Front	0	5825	11.69	12	1.026	0.06	0.243	0.249
#6	WIFI 5.8GHz ANT.2	a	Back	0	5825	11.69	12	1.026	0.10	0.302	<b>0.310</b>
	WIFI 5.8GHz ANT.2	a	Right Side	0	5825	11.69	12	1.026	0.05	0.228	0.234
	WIFI 5.8GHz ANT.2	a	Left Side	0	5825	11.69	12	1.026	0.07	0.291	0.299
	WIFI 5.8GHz ANT.2	a	Top Side	0	5825	11.69	12	1.026	0.15	0.231	0.237

## Shenzhen Anbotek Compliance Laboratory Limited

Address: 1/F., Building D, Sogood Science and Technology Park, Sanwei Community, Hangcheng Street, Bao'an District, Shenzhen, Guangdong, China.

Tel: (86) 755-26066440 Fax: (86) 755-26014772 Email: service@anbotek.com



Hotline

400-003-0500

www.anbotek.com



## 13. Simultaneous Transmission Analysis

### 13.1 Simultaneous TX SAR Considerations

No.	Applicable Simultaneous Transmission
1.	WIFI 2.4GHz ANT.1+ WIFI 2.4GHz ANT.2
2.	WIFI 5.2GHz ANT.1+ WIFI 5.2GHz ANT.2
3.	WIFI 5.8GHz ANT.1+ WIFI 5.8GHz ANT.2

**Note:**

1. WIFI 2.4GHz and 5GHz share the same antenna, and cannot transmit simultaneously.
2. Bluetooth stand-alone SAR tests are not required and are considered zero in the SAR summation.
3. Multi-band transmission analysis for Body SAR is performed following EN62209-2 procedure.

### 13.2 Evaluation of Simultaneous SAR

Test Position	2.4g WiFi ANT.1 SAR <sub>10-g</sub> (W/Kg)	2.4g WiFi ANT.2 SAR <sub>10-g</sub> (W/Kg)	MAX. ΣSAR <sub>10-g</sub> (W/Kg)	SAR <sub>10-g</sub> Limit (W/Kg)	Simut. Meas. Required
Front	0.344	0.223	0.567	2.0	N/A
Back	<b>0.419</b>	<b>0.318</b>	<b>0.737</b>	2.0	N/A
Left Side	0.329	0.210	0.539	2.0	N/A
Right Side	0.331	0.212	0.543	2.0	N/A
Top Side	0.052	0.202	0.254	2.0	N/A

Test Position	5.2g WiFi ANT.1 SAR <sub>10-g</sub> (W/Kg)	5.2g WiFi ANT.2 SAR <sub>10-g</sub> (W/Kg)	MAX. ΣSAR <sub>10-g</sub> (W/Kg)	SAR <sub>10-g</sub> Limit (W/Kg)	Simut. Meas. Required
Front	0.165	0.307	0.472	2.0	N/A
Back	<b>0.299</b>	<b>0.379</b>	<b>0.678</b>	2.0	N/A
Left Side	0.149	0.294	0.443	2.0	N/A
Right Side	0.124	0.218	0.342	2.0	N/A
Top Side	0.133	0.253	0.386	2.0	N/A

#### Shenzhen Anbotek Compliance Laboratory Limited

Address: 1/F., Building D, Sogood Science and Technology Park, Sanwei Community, Hangcheng Street, Bao'an District, Shenzhen, Guangdong, China.

Tel: (86) 755-26066440 Fax: (86) 755-26014772 Email: service@anbotek.com



Hotline  
400-003-0500  
www.anbotek.com

Test Position	5.8g WiFi ANT.1 SAR <sub>10-g</sub> (W/Kg)	5.8g WiFi ANT.2 SAR <sub>10-g</sub> (W/Kg)	MAX. ΣSAR <sub>10-g</sub> (W/Kg)	SAR <sub>10-g</sub> Limit (W/Kg)	Simut. Meas. Required
Front	0.249	0.249	0.498	2.0	N/A
Back	<b>0.330</b>	<b>0.310</b>	<b>0.64</b>	2.0	N/A
Left Side	0.244	0.234	0.478	2.0	N/A
Right Side	0.230	0.299	0.529	2.0	N/A
Top Side	0.220	0.237	0.457	2.0	N/A

**Note:**

If 10g-SAR scalar summation <2.0W/kg, simultaneous SAR measurement is not necessary.

**Shenzhen Anbotek Compliance Laboratory Limited**

Address: 1/F., Building D, Sogood Science and Technology Park, Sanwei Community, Hangcheng Street, Bao'an District, Shenzhen, Guangdong, China.

Tel: (86) 755-26066440 Fax: (86) 755-26014772 Email: service@anbotek.com



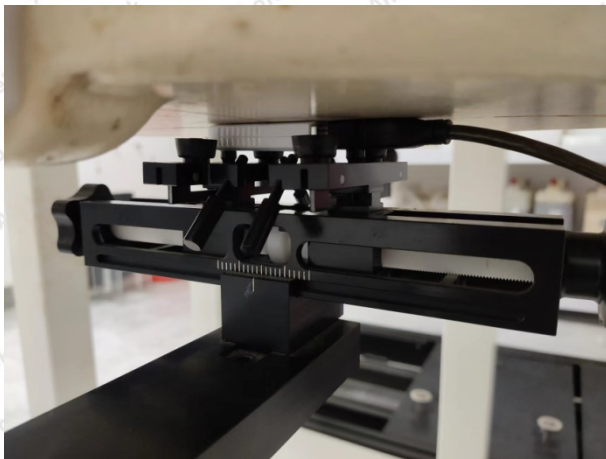
Hotline  
400-003-0500  
www.anbotek.com

## 14. Measurement Uncertainty

PerKDB865664D01 SAR Measurement 100MHz to 6GHz, when the highest measured 1-gSAR within a frequency band is  $<1.5\text{W/Kg}$ , the extensive SAR measurement uncertainty analysis is described in IEC 62209-2:2010 is not required in SAR reports submitted for equipment approval.



## Appendix A. EUT Photos and Test Setup Photos



**Body Front(0mm)**



**Body Back(0mm)**



**Body Left (0mm)**



**Body Right (0mm)**



**Body Top (0mm)**

### **Shenzhen Anbotek Compliance Laboratory Limited**

Address: 1/F., Building D, Sogood Science and Technology Park, Sanwei Community, Hangcheng Street, Bao'an District, Shenzhen, Guangdong, China.

Tel: (86) 755-26066440 Fax: (86) 755-26014772 Email: [service@anbotek.com](mailto:service@anbotek.com)



Hotline  
400-003-0500  
[www.anbotek.com](http://www.anbotek.com)

## Appendix B. Plots of SAR System Check

### 2450MHz Head System Check

**DUT: Dipole 2450 MHz; Type: D2450V2; Serial: D2450V2 - SN:910**

Communication System: UID 0, CW; Frequency: 2450 MHz; Duty Cycle: 1:1

Medium parameters used:  $f = 2450$  MHz;  $\sigma = 1.86$  S/m;  $\epsilon_r = 39.05$ ;  $\rho = 1000$  kg/m<sup>3</sup>

Phantom section: Flat Section

DASY5 Configuration:

- Probe: EX3DV4 – SN7396; ConvF(7.57, 7.57, 7.57); Calibrated: 05.06.2022;
- Sensor-Surface: 2mm (Mechanical Surface Detection)
- Electronics: DAE4 Sn387; Calibrated: 09.06.2021
- Phantom: SAM; Type: QD000P40CD; Serial: TP:1670
- Measurement SW: DASY52, Version 52.8 (2); SEMCAD X Version 14.6.10 (7164)

**Configuration/Pin=250mW/Area Scan (81x81x1):** Interpolated grid:  $dx=1.200$  mm,  $dy=1.200$  mm

Maximum value of SAR (interpolated) = 20.1 W/kg

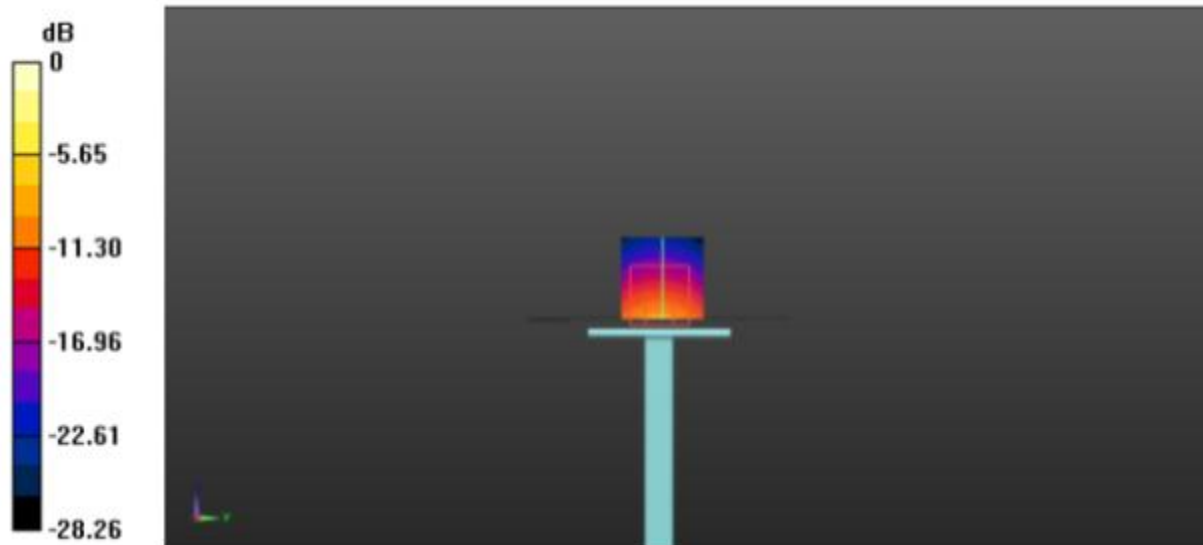
**Configuration/Pin=250mW/Zoom Scan (7x7x7)/Cube 0:** Measurement grid:  $dx=5$ mm,  $dy=5$ mm,  $dz=5$ mm

Reference Value = 87.352 V/m; Power Drift = 0.03 dB

Peak SAR (extrapolated) = 26.4 W/kg

**SAR(1 g) = 12.92 W/kg; SAR(10 g) = 6.14 W/kg**

Maximum value of SAR (measured) = 19.6 W/kg



### Shenzhen Anbotek Compliance Laboratory Limited

Address: 1/F., Building D, Sogood Science and Technology Park, Sanwei Community, Hangcheng Street, Bao'an District, Shenzhen, Guangdong, China.

Tel: (86) 755-26066440 Fax: (86) 755-26014772 Email: service@anbotek.com



Hotline  
400-003-0500  
www.anbotek.com



Report No.: 18220WC20166901

Page 41 of 89

5200MHzHeadSystemCheckDate:07/25/2022

DUT:Dipole5GHz;Type:D5GHzV2;Serial:D5GHzV2-SN:1160

CommunicationSystem:UID0,CW;Frequency:5200MHz;DutyCycle:1:1

Mediumparametersused: $f=5200\text{MHz}$ ;  $\sigma=4.713\text{S/m}$ ;  $\epsilon_r=36.118$ ;  $\rho=1000\text{kg/m}^3$ 

Phantomsection:FlatSection

DASY5Configuration:

- Probe:EX3DV4-SN7396;ConvF(4.93,4.93,4.93);Calibrated: 05,06.2022;
- Sensor-Surface:2mm(MechanicalSurfaceDetection)
- Electronics:DAE4Sn387;Calibrated:09.06.2021
- Phantom:SAM;Type:QD000P40CD;Serial:TP:1670
- MeasurementSW:DASY52,Version52.8(2);SEMCADXVersion14.6.10(7164)

**Configuration/Pin=100mW/ZoomScan(7x7x7)/Cube0:**Measurementgrid:dx=4mm,dy=4mm,dz=1.4mm

ReferenceValue=58.388V/m;PowerDrift=-0.01dB

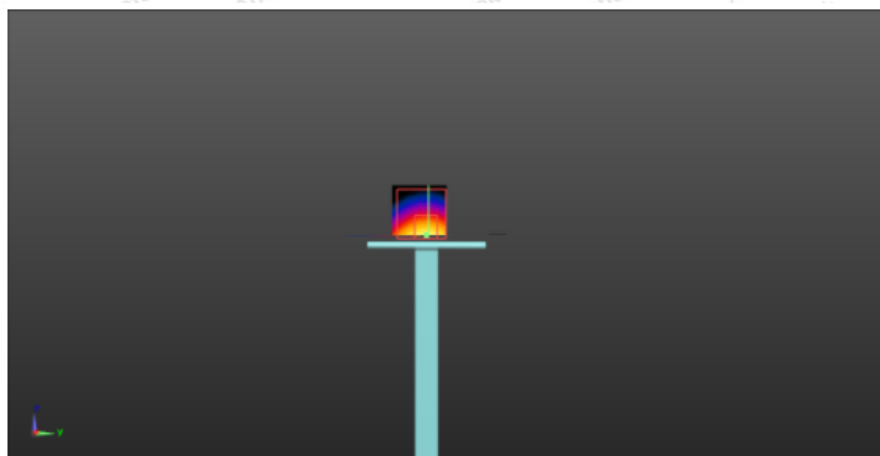
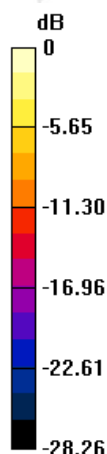
PeakSAR(extrapolated)=33.7W/kg

**SAR(1g)=8.45W/kg;SAR(10g)=2.32W/kg**

MaximumvalueofSAR(measured)=20.9W/kg

**Configuration/Pin=100mW/AreaScan(71x71x1):**Interpolatedgrid:dx=1.000mm,dy=1.000mm

MaximumvalueofSAR(interpolated)=20.2W/kg



0 dB = 20.2 W/kg = 13.05 dBW/kg

**Shenzhen Anbotek Compliance Laboratory Limited**

Address: 1/F., Building D, Sogood Science and Technology Park, Sanwei Community, Hangcheng Street, Bao'an District, Shenzhen, Guangdong, China.

Tel: (86) 755-26066440 Fax: (86) 755-26014772 Email: service@anbotek.com

Hotline  
400-003-0500  
www.anbotek.com



## Appendix C. Plots of SAR Test Data

#1

Date:2022-07-24

### WIFI 2.4G ANT.1\_802.11b\_Body Back\_Ch06

Communication System: UID 0, wifi (fcc) (0); Frequency: 2437 MHz; Duty Cycle: 1:1

Medium parameters used (interpolated):  $f = 2437$  MHz;  $\sigma = 1.86$  S/m;  $\epsilon_r = 39.05$ ;  $\rho = 1000$  kg/m<sup>3</sup>

Phantom section: Flat Section

DASY5 Configuration:

- Probe: EX3DV4 - SN7396; ConvF(7.53, 7.53, 7.53); Calibrated: 05.06.2021;
- Sensor-Surface: 4mm (Mechanical Surface Detection)
- Electronics: DAE4 Sn387; Calibrated: 09.06.2021
- Phantom: SAM 1; Type: SAM;
- Measurement SW: DASY52, Version 52.8 (2); SEMCAD X Version 14.6.10 (7164)

**Configuration/BACK/Area Scan (33x17x1):** Measurement grid: dx=10mm, dy=10mm

Maximum value of SAR (measured) = 0.366 W/kg

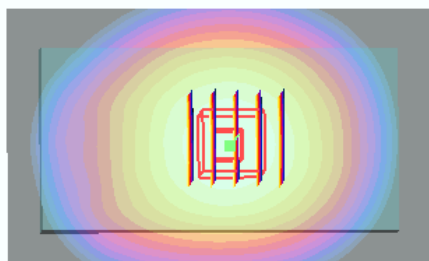
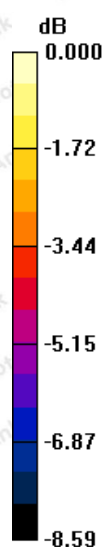
**Configuration/BACK/Zoom Scan (7x7x7)/Cube 0:** Measurement grid: dx=5mm, dy=5mm, dz=5mm

Reference Value = 9.104 V/m; Power Drift = 0.08 dB

Peak SAR (extrapolated) = 0.374 W/kg

**SAR(1 g) = 0.333 W/kg; SAR(10 g) = 0.171 W/kg**

Maximum value of SAR (measured) = 0.356 W/kg



### Shenzhen Anbotek Compliance Laboratory Limited

Address: 1/F., Building D, Sogood Science and Technology Park, Sanwei Community, Hangcheng Street, Bao'an District, Shenzhen, Guangdong, China.

Tel: (86) 755-26066440 Fax: (86) 755-26014772 Email: service@anbotek.com

Hotline  
400-003-0500  
www.anbotek.com

Report No.: 18220WC20166901

Page 43 of 89

#2

Date:2022-07-24

**WIFI 2.4G ANT.2 \_802.11b\_Body Back \_Ch6**

Communication System: UID 0, wifi (fcc) (0); Frequency: 2437 MHz;Duty Cycle: 1:1

Medium parameters used (interpolated):  $f = 2437$  MHz;  $\sigma = 1.86$  S/m;  $\epsilon_r = 39.05$ ;  $\rho = 1000$  kg/m<sup>3</sup>

Phantom section: Flat Section

DASY5 Configuration:

- Probe: EX3DV4 - SN7396; ConvF(7.53, 7.53, 7.53); Calibrated: 05.06.2021;
- Sensor-Surface: 4mm (Mechanical Surface Detection)
- Electronics: DAE4 Sn387; Calibrated: 09.06.2021
- Phantom: SAM I; Type: SAM;
- Measurement SW: DASY52, Version 52.8 (2); SEMCAD X Version 14.6.10 (7164)

**Configuration/BACK/Area Scan (33x17x1):** Measurement grid: dx=10mm, dy=10mm

Maximum value of SAR (measured) = 0.354 W/kg

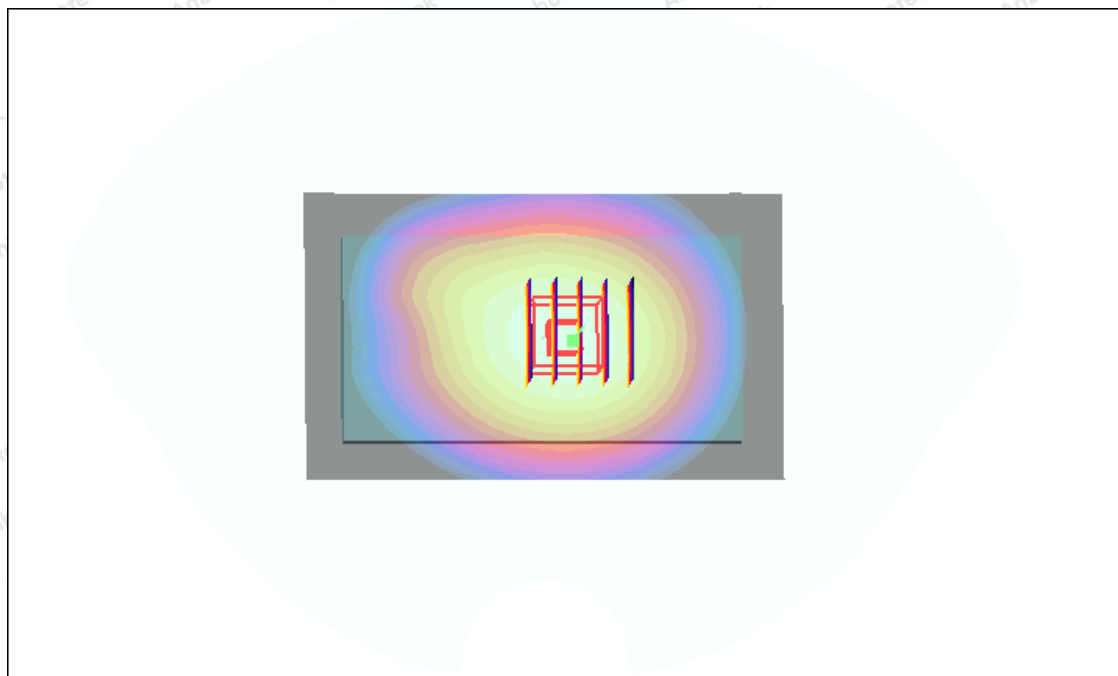
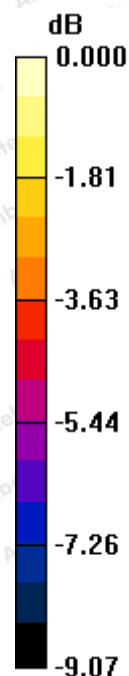
**Configuration/BACK/Zoom Scan (7x7x7)/Cube 0:** Measurement grid: dx=5mm, dy=5mm, dz=5mm

Reference Value = 13.4 V/m; Power Drift =-0.09 dB

Peak SAR (extrapolated) = 0.312 W/kg

**SAR(1 g) = 0.305 W/kg; SAR(10 g) = 0.167 W/kg**

Maximum value of SAR (measured) = 0.333 W/kg

**Shenzhen Anbotek Compliance Laboratory Limited**

Address: 1/F., Building D, Sogood Science and Technology Park, Sanwei Community, Hangcheng Street, Bao'an District, Shenzhen, Guangdong, China.

Tel:(86) 755-26066440 Fax: (86) 755-26014772 Email: service@anbotek.com

Hotline  
400-003-0500  
www.anbotek.com

**WIFI 5.2G ANT 1\_802.11a\_Body BACK \_5200**

Communication System: UID 0, 802.11a (0); Frequency: 5200 MHz; Duty Cycle: 1:1

Medium parameters used:  $f = 5200$  MHz;  $\sigma = 5.243$  S/m;  $\epsilon_r = 47.681$ ;  $\rho = 1000$  kg/m<sup>3</sup>

Phantom section: Flat Section

DASY5 Configuration:

- Probe: EX3DV4—SN7396; ConvF(4.93,4.93,4.93); Calibrated: 05,06.2022;
- Sensor-Surface: 2mm(Mechanical Surface Detection)
- Electronics: DAE4Sn387; Calibrated: 09.06.2021
- Phantom: SAM; Type: QD000P40CD; Serial: TP:1670
- Measurement SW: DASY52, Version 52.8(2); SEMCADX Version 14.6.10(7164)

**BODY/BACK/Area Scan (8x12x1):** Measurement grid: dx=15mm, dy=15mm

Maximum value of SAR (measured) = 0.405 W/kg

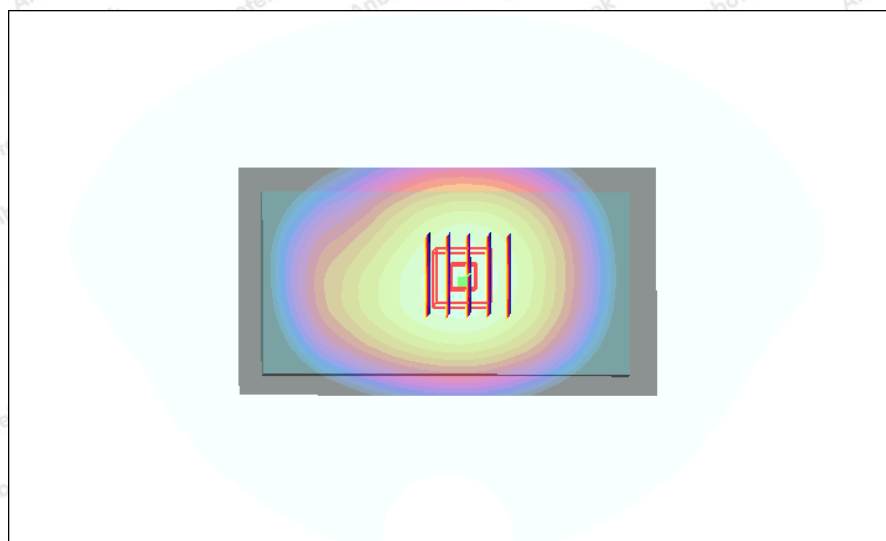
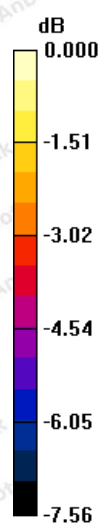
**BODY/BACK/Zoom Scan (5x5x7)/Cube 0:** Measurement grid: dx=8mm, dy=8mm, dz=5mm

Reference Value = 5.420 V/m; Power Drift = 0.01 dB

Peak SAR (extrapolated) = 0.501 W/kg

**SAR(1 g) = 0.296 W/kg; SAR(10 g) = 0.177 W/kg**

Maximum value of SAR (measured) = 0.392 W/kg

**Shenzhen Anbotek Compliance Laboratory Limited**

Address: 1/F., Building D, Sogood Science and Technology Park, Sanwei Community, Hangcheng Street, Bao'an District, Shenzhen, Guangdong, China.

Tel: (86) 755-26066440 Fax: (86) 755-26014772 Email: service@anbotek.com



Hotline  
400-003-0500  
www.anbotek.com



#4

Date:07/25/2022

**WIFI 5.2G ANT 2\_802.11a\_Body BACK \_5200**

Communication System: UID 0, 802.11a (0); Frequency: 5200 MHz;Duty Cycle: 1:1  
Medium parameters used:  $f = 5200$  MHz;  $\sigma = 5.243$  S/m;  $\epsilon_r = 47.681$ ;  $\rho = 1000$  kg/m<sup>3</sup>  
Phantom section: Flat Section

**DASY5Configuration:**

- Probe:EX3DV4–SN7396;ConvF(4.93,4.93,4.93);Calibrated: 05,06.2022;
- Sensor-Surface:2mm(MechanicalSurfaceDetection)
- Electronics:DAE4Sn387;Calibrated:09.06.2021
- Phantom:SAM;Type:QD000P40CD;Serial:TP:1670
- MeasurementSW:DASY52,Version52.8(2);SEMCADXVersion14.6.10(7164)

**BODY/BACK/Area Scan (8x12x1):** Measurement grid: dx=15mm, dy=15mm

Maximum value of SAR (measured) = 0.442 W/kg

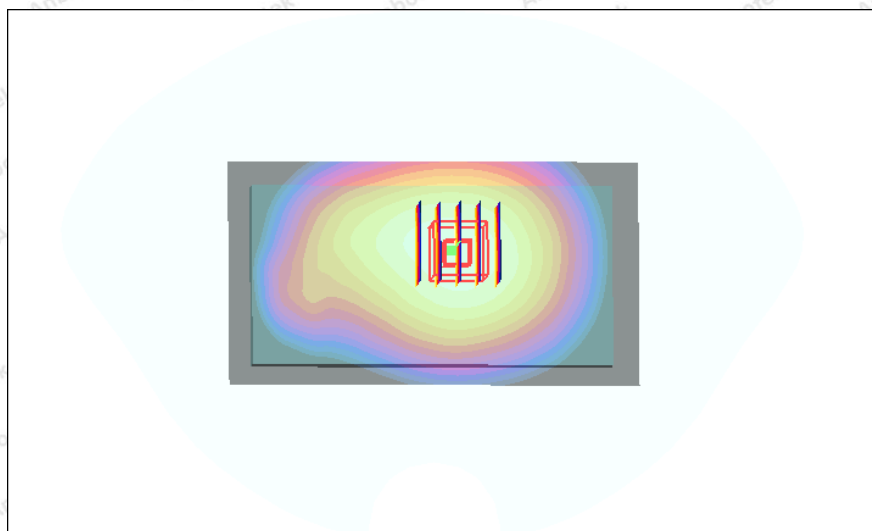
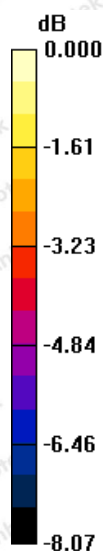
**BODY/BACK/Zoom Scan (5x5x7)/Cube 0:** Measurement grid: dx=8mm, dy=8mm, dz=5mm

Reference Value = 7.45 V/m; Power Drift = 0.01 dB

Peak SAR (extrapolated) = 0.502 W/kg

**SAR(1 g) = 0.357 W/kg; SAR(10 g) = 0.222 W/kg**

Maximum value of SAR (measured) = 0.378 W/kg

**Shenzhen Anbotek Compliance Laboratory Limited**

Address: 1/F., Building D, Sogood Science and Technology Park, Sanwei Community, Hangcheng Street, Bao'an District, Shenzhen, Guangdong, China.

Tel:(86) 755-26066440 Fax: (86) 755-26014772 Email: service@anbotek.com



Hotline  
400-003-0500  
www.anbotek.com

#5

Date:07/25/2022

**WIFI 5.8G ANT1\_802.11a\_Body BACK \_5785**

Communication System: UID 0, 802.11a (0); Frequency: 5785 MHz;Duty Cycle: 1:1  
Medium parameters used:  $f = 5785 \text{ MHz}$ ;  $\sigma = 5.243 \text{ S/m}$ ;  $\epsilon_r = 47.681$ ;  $\rho = 1000 \text{ kg/m}^3$   
Phantom section: Flat Section

**DASY5Configuration:**

- Probe:EX3DV4-SN7396;ConvF(4.93,4.93,4.93);Calibrated: 05,06.2022;
- Sensor-Surface:2mm(Mechanical Surface Detection)
- Electronics:DAE4Sn387;Calibrated:09.06.2021
- Phantom:SAM;Type:QD000P40CD;Serial:TP:1670
- MeasurementSW:DASY52,Version52.8(2);SEMCADXVersion14.6.10(7164)

**BODY/BACK/Area Scan (8x12x1):** Measurement grid: dx=15mm, dy=15mm

Maximum value of SAR (measured) = 0.547 W/kg

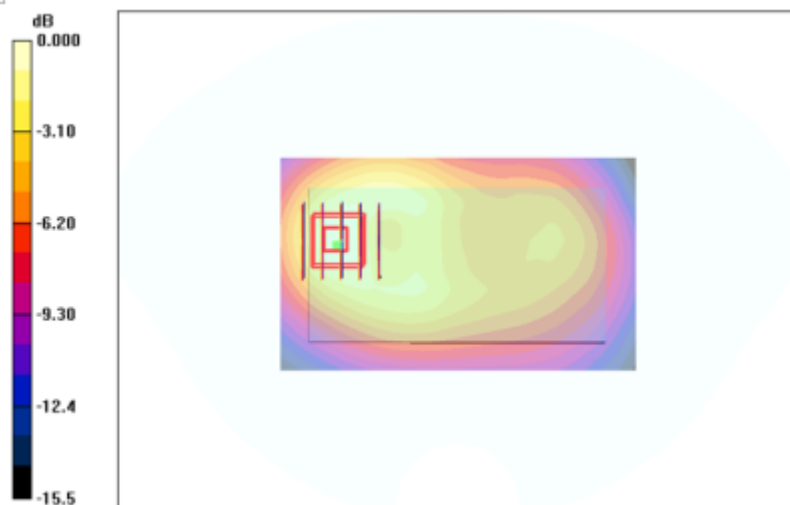
**BODY/BACK/Zoom Scan (5x5x7)/Cube 0:** Measurement grid: dx=8mm, dy=8mm, dz=5mm

Reference Value =10.54 V/m; Power Drift = -0.12 dB

Peak SAR (extrapolated) = 0.623 W/kg

**SAR(1 g) = 0.310 W/kg; SAR(10 g) = 0.160W/kg**

Maximum value of SAR (measured) = 0.426 W/kg

**Shenzhen Anbotek Compliance Laboratory Limited**

Address: 1/F., Building D, Sogood Science and Technology Park, Sanwei Community, Hangcheng Street, Bao'an District, Shenzhen, Guangdong, China.

Tel:(86) 755-26066440 Fax: (86) 755-26014772 Email: service@anbotek.com



Hotline  
400-003-0500  
www.anbotek.com

#6

Date:07/25/2022

**WIFI 5.8G ANT2\_802.11a\_Body BACK \_5785**

Communication System: UID 0, 802.11a (0); Frequency: 5785 MHz;Duty Cycle: 1:1  
Medium parameters used:  $f = 5785 \text{ MHz}$ ;  $\sigma = 5.243 \text{ S/m}$ ;  $\epsilon_r = 47.681$ ;  $\rho = 1000 \text{ kg/m}^3$   
Phantom section: Flat Section

**DASY5Configuration:**

- Probe:EX3DV4-SN7396;ConvF(4.93,4.93,4.93);Calibrated: 05,06.2022;
- Sensor-Surface:2mm(Mechanical Surface Detection)
- Electronics:DAE4Sn387;Calibrated:09.06.2021
- Phantom:SAM;Type:QD000P40CD;Serial:TP:1670
- MeasurementSW:DASY52,Version52.8(2);SEMCADXVersion14.6.10(7164)

**BODY/BACK/Area Scan (8x12x1):** Measurement grid: dx=15mm, dy=15mm

Maximum value of SAR (measured) = 0.446 W/kg

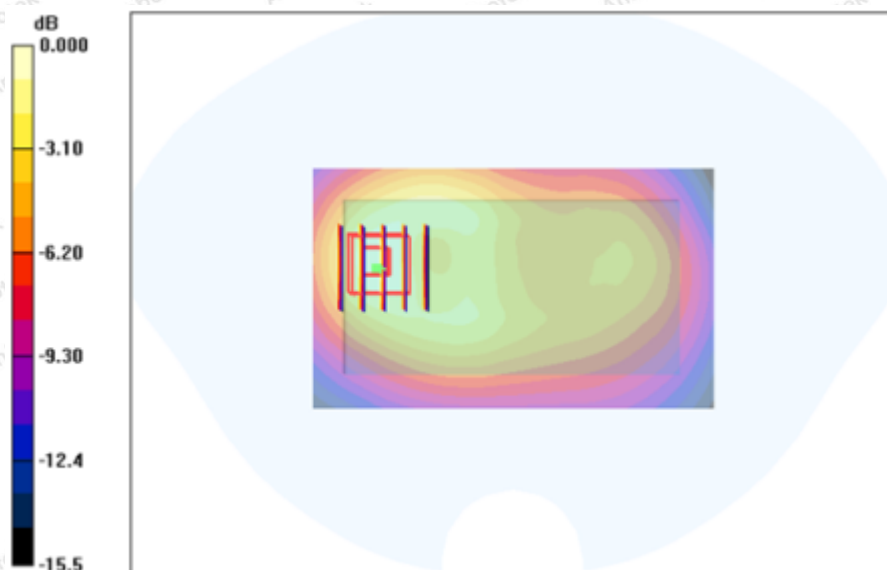
**BODY/BACK/Zoom Scan (5x5x7)/Cube 0:** Measurement grid: dx=8mm, dy=8mm, dz=5mm

Reference Value = 15.24 V/m; Power Drift = 0.10 dB

Peak SAR (extrapolated) = 0.422 W/kg

**SAR(1 g) = 0.302 W/kg; SAR(10 g) = 0.156 W/kg**

Maximum value of SAR (measured) = 0.369 W/kg

**Shenzhen Anbotek Compliance Laboratory Limited**

Address: 1/F., Building D, Sogood Science and Technology Park, Sanwei Community, Hangcheng Street, Bao'an District, Shenzhen, Guangdong, China.

Tel:(86) 755-26066440 Fax: (86) 755-26014772 Email: service@anbotek.com



Hotline  
400-003-0500  
www.anbotek.com



## Appendix D. DASY System Calibration Certificate

### Shenzhen Anbotech Compliance Laboratory Limited

Address: 1/F., Building D, Sogood Science and Technology Park, Sanwei Community,  
Hangcheng Street, Bao'an District, Shenzhen, Guangdong, China.

Tel: (86) 755-26066440 Fax: (86) 755-26014772 Email: service@anbotech.com



Hotline  
400-003-0500  
[www.anbotech.com](http://www.anbotech.com)



In Collaboration with  
**s p e a g**  
CALIBRATION LABORATORY



中国认可  
国际互认  
校准  
CALIBRATION  
CNAS L0570

Add: No.51 Xueyuan Road, Haidian District, Beijing, 100191, China  
Tel: +86-10-62304633-2218 Fax: +86-10-62304633-2209  
E-mail: cttl@chinattl.com Http://www.chinattl.cn

Client

Anbotek (Auden)

Certificate No: Z21-98671

**CALIBRATION CERTIFICATE**

Object EX3DV4 - SN:7396

Calibration Procedure(s) FF-Z12-006-08  
Calibration Procedures for Dosimetric E-field Probes

Calibration date: May 06, 2021

This calibration Certificate documents the traceability to national standards, which realize the physical units of measurements(SI). The measurements and the uncertainties with confidence probability are given on the following pages and are part of the certificate.

All calibrations have been conducted in the closed laboratory facility: environment temperature(22±3)°C and humidity<70%.

Calibration Equipment used (M&amp;TE critical for calibration)

Primary Standards	ID #	Cal Date(Calibrated by, Certificate No.)	Scheduled Calibration
Power Meter NRP2	101919	20-Jun-20 (CTTL, No.J20X07447)	Jun-21
Power sensor NRP-Z91	101547	20-Jun-20 (CTTL, No.J20X07447)	Jun-21
Power sensor NRP-Z91	101548	20-Jun-20 (CTTL, No.J20X07447)	Jun-21
Reference10dBAttenuator	18N50W-10dB	13-Mar-21 (CTTL, No.J21X01547)	Mar-22
Reference20dBAttenuator	18N50W-20dB	13-Mar-21 (CTTL, No.J21X01548)	Mar-22
Reference Probe EX3DV4	SN 7433	26-Sep-20 (SPEAG, No.EX3-7433_Sep20)	Sep-21
DAE4	SN 549	13-Dec-20 (SPEAG, No.DAE4-549_Dec20)	Dec -21
Secondary Standards	ID #	Cal Date(Calibrated by, Certificate No.)	Scheduled Calibration
SignalGeneratorMG3700A	6201052605	27-Jun-20 (CTTL, No.J20X04776)	Jun-21
Network Analyzer E5071C	MY46110673	13-Jan-21 (CTTL, No.J21X00285)	Jan -22

	Name	Function	Signature
Calibrated by:	Yu Zongying	SAR Test Engineer	
Reviewed by:	Lin Hao	SAR Test Engineer	
Approved by:	Qi Dianyuan	SAR Project Leader	

Issued: May 06, 2021

This calibration certificate shall not be reproduced except in full without written approval of the laboratory.

Certificate No: Z21-98671

Page 1 of 11

**Shenzhen Anbotek Compliance Laboratory Limited**

Address: 1/F., Building D, Sogood Science and Technology Park, Sanwei Community, Hangcheng Street, Bao'an District, Shenzhen, Guangdong, China.

Tel: (86) 755-26066440 Fax: (86) 755-26014772 Email: service@anbotek.com



Hotline  
400-003-0500  
www.anbotek.com





In Collaboration with

**s p e a k**  
**CALIBRATION LABORATORY**

Add: No.51 Xueyuan Road, Haidian District, Beijing, 100191, China

Tel: +86-10-62304633-2218

Fax: +86-10-62304633-2209

E-mail: cttl@chinattl.com

Http://www.chinattl.cn

**Glossary:**

TSL	tissue simulating liquid
NORM <sub>x,y,z</sub>	sensitivity in free space
ConvF	sensitivity in TSL / NORM <sub>x,y,z</sub>
DCP	diode compression point
CF	crest factor (1/duty_cycle) of the RF signal
A,B,C,D	modulation dependent linearization parameters
Polarization $\Phi$	$\Phi$ rotation around probe axis
Polarization $\theta$	$\theta$ rotation around an axis that is in the plane normal to probe axis (at measurement center), i $\theta=0$ is normal to probe axis

Connector Angle information used in DASY system to align probe sensor X to the robot coordinate system

**Calibration is Performed According to the Following Standards:**

- IEEE Std 1528-2013, "IEEE Recommended Practice for Determining the Peak Spatial-Averaged Specific Absorption Rate (SAR) in the Human Head from Wireless Communications Devices: Measurement Techniques", June 2013
- IEC 62209-1, "Procedure to measure the Specific Absorption Rate (SAR) for hand-held devices used in close proximity to the ear (frequency range of 300MHz to 3GHz)", February 2005
- IEC 62209-2, "Procedure to determine the Specific Absorption Rate (SAR) for wireless communication devices used in close proximity to the human body (frequency range of 30 MHz to 6 GHz)", March 2010
- KDB 865664, "SAR Measurement Requirements for 100 MHz to 6 GHz"

**Methods Applied and Interpretation of Parameters:**

- NORM<sub>x,y,z</sub>:** Assessed for E-field polarization  $\theta=0$  ( $f \leq 900\text{MHz}$  in TEM-cell;  $f > 1800\text{MHz}$ : waveguide). NORM<sub>x,y,z</sub> are only intermediate values, i.e., the uncertainties of NORM<sub>x,y,z</sub> does not effect the  $E^2$ -field uncertainty inside TSL (see below ConvF).
- NORM( $f$ )<sub>x,y,z</sub> = NORM<sub>x,y,z</sub> \* frequency\_response** (see Frequency Response Chart). This linearization is implemented in DASY4 software versions later than 4.2. The uncertainty of the frequency response is included in the stated uncertainty of ConvF.
- DCPx,y,z:** DCP are numerical linearization parameters assessed based on the data of power sweep (no uncertainty required). DCP does not depend on frequency nor media.
- PAR:** PAR is the Peak to Average Ratio that is not calibrated but determined based on the signal characteristics.
- A<sub>x,y,z</sub>; B<sub>x,y,z</sub>; C<sub>x,y,z</sub>; VR<sub>x,y,z</sub>:** A,B,C are numerical linearization parameters assessed based on the data of power sweep for specific modulation signal. The parameters do not depend on frequency nor media. VR is the maximum calibration range expressed in RMS voltage across the diode.
- ConvF and Boundary Effect Parameters:** Assessed in flat phantom using E-field (or Temperature Transfer Standard for  $f \leq 800\text{MHz}$ ) and inside waveguide using analytical field distributions based on power measurements for  $f > 800\text{MHz}$ . The same setups are used for assessment of the parameters applied for boundary compensation (alpha, depth) of which typical uncertainty valued are given. These parameters are used in DASY4 software to improve probe accuracy close to the boundary. The sensitivity in TSL corresponds to NORM<sub>x,y,z</sub> \* ConvF whereby the uncertainty corresponds to that given for ConvF. A frequency dependent ConvF is used in DASY version 4.4 and higher which allows extending the validity from  $\pm 50\text{MHz}$  to  $\pm 100\text{MHz}$ .
- Spherical isotropy (3D deviation from isotropy):** in a field of low gradients realized using a flat phantom exposed by a patch antenna.
- Sensor Offset:** The sensor offset corresponds to the offset of virtual measurement center from the probe tip (on probe axis). No tolerance required.
- Connector Angle:** The angle is assessed using the information gained by determining the NORM<sub>x</sub> (no uncertainty required).

**Shenzhen Anbotek Compliance Laboratory Limited**

Address: 1/F., Building D, Sogood Science and Technology Park, Sanwei Community, Hangcheng Street, Bao'an District, Shenzhen, Guangdong, China.

Tel: (86) 755-26066440 Fax: (86) 755-26014772 Email: service@anbotek.com

Hotline  
400-003-0500  
www.anbotek.com





In Collaboration with

**s p e a g**  
CALIBRATION LABORATORY

Add: No.51 Xueyuan Road, Haidian District, Beijing, 100191, China  
Tel: +86-10-62304633-2218 Fax: +86-10-62304633-2209  
E-mail: [cttl@chinattl.com](mailto:cttl@chinattl.com) [Http://www.chinattl.cn](http://www.chinattl.cn)

# Probe EX3DV4

## SN: 7396

Calibrated: May 06, 2021

Calibrated for DASY/EASY Systems

(Note: non-compatible with DASY2 system!)

Certificate No: Z21-98671

Page 3 of 11

### Shenzhen Anbotek Compliance Laboratory Limited

Address: 1/F., Building D, Sogood Science and Technology Park, Sanwei Community, Hangcheng Street, Bao'an District, Shenzhen, Guangdong, China.

Tel: (86) 755-26066440 Fax: (86) 755-26014772 Email: [service@anbotek.com](mailto:service@anbotek.com)



Hotline  
400-003-0500  
[www.anbotek.com](http://www.anbotek.com)



In Collaboration with

**s p e a g**  
**CALIBRATION LABORATORY**

Add: No.51 Xueyuan Road, Haidian District, Beijing, 100191, China

Tel: +86-10-62304633-2218

Fax: +86-10-62304633-2209

E-mail: cttl@chinattl.com

Http://www.chinattl.cn

## DASY/EASY – Parameters of Probe: EX3DV4 – SN: 7396

### Basic Calibration Parameters

	Sensor X	Sensor Y	Sensor Z	Unc (k=2)
Norm( $\mu\text{V}/(\text{V}/\text{m})^2$ ) <sup>A</sup>	0.54	0.53	0.50	±10.0%
DCP(mV) <sup>B</sup>	97.8	104.5	102.5	

### Modulation Calibration Parameters

UID	Communication System Name		A dB	B dB $\sqrt{\mu\text{V}}$	C	D dB	VR mV	Unc <sup>E</sup> (k=2)
0	CW	X	0.0	0.0	1.0	0.00	199.9	±2.4%
		Y	0.0	0.0	1.0		203.3	
		Z	0.0	0.0	1.0		195.0	

The reported uncertainty of measurement is stated as the standard uncertainty of Measurement multiplied by the coverage factor k=2, which for a normal distribution Corresponds to a coverage probability of approximately 95%.

<sup>A</sup> The uncertainties of Norm X, Y, Z do not affect the E<sup>2</sup>-field uncertainty inside TSL (see Page 5 and Page 6).

<sup>B</sup> Numerical linearization parameter: uncertainty not required.

<sup>E</sup> Uncertainty is determined using the max. deviation from linear response applying rectangular distribution and is expressed for the square of the field value.

