

Bowers & Wilkins PI3 Manual

1. Carton Contents

Please ensure the following items are included in carton:

PI3 Headphones
Storage Case
USB-C Charging Cable
Ear Tips
Ear Stabilizers
Literature Pack

2. Getting to Know Your Earphones

2.1 Switch Earphones On/Off

Switching On

The Power Button is located on the left. Press & hold the Power Button for 2 seconds, an audible cue will be presented & the earphone indicator will light in a color (green, amber, red) displaying the current charge level.

Switching Off

Press & hold the Power Button for 2 seconds, an audible cue will be presented & the earphones power down when the indicator is no longer lit.

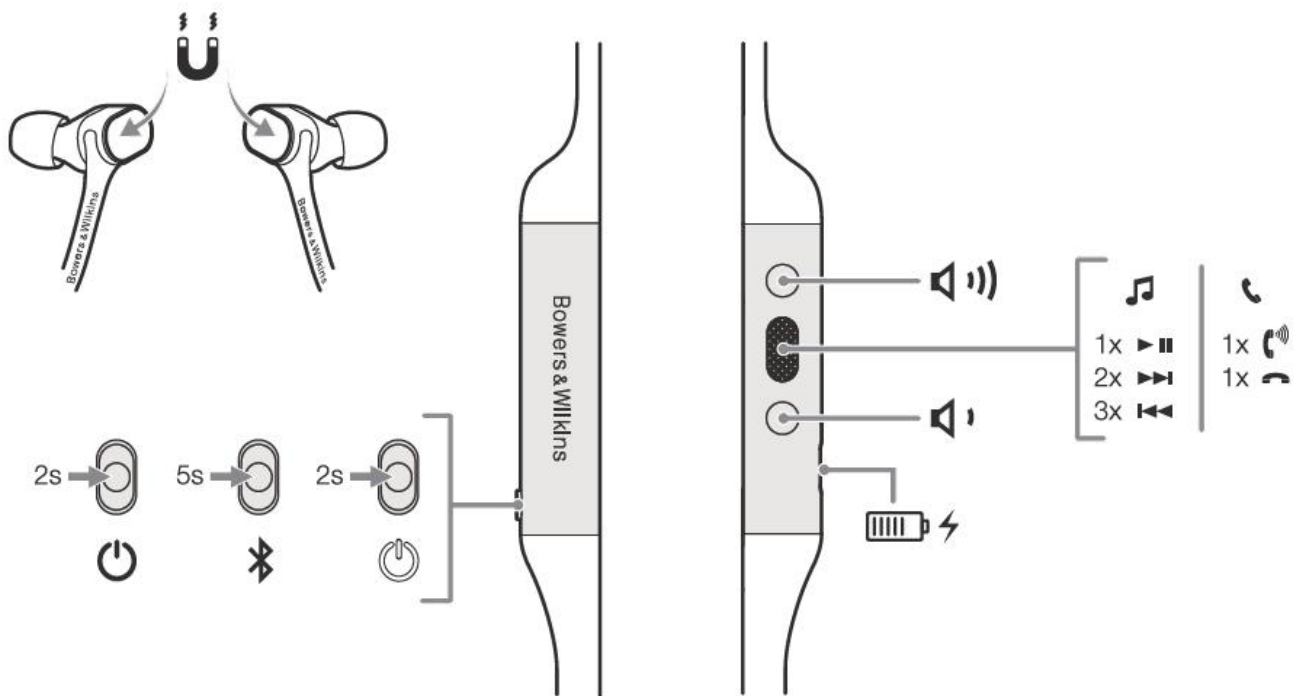
2.2 Earphone Controls

The following buttons on the right control unit are used for media playback:

Function	Action
Play or pause	Press the Multi-function button once
Play to next track	Press the Multi-function button twice in quick succession
Play previous track	Press the Multi-function button three times in quick succession
Increase Volume	Press the Volume Up button
Lower Volume	Press the Volume Down button

The following buttons on the right control unit are used for phone call functionality:

Function	Action
Answer or end call	Press the Multi-function button once
Answer an incoming call	When incoming call occurs, press the Multi-function button once
Decline an incoming	When incoming call occurs, hold the Multi-function for 2 seconds
Switch between two calls	With two calls active, press the Multi-function button twice
Merge two calls	With two calls active, hold the Multi-function button for 1 second
Toggle Mute	While on a call, press the Multi-function button three times



3. Battery Charging

Your Bowers & Wilkins earphones ships with the battery partially charged & may be used immediately. For best practice we recommend to fully charge the earphones before first use. Please allow up to 3 hours for full charge. The earphones can be used while charging.

To charge:

1. Please use the supplied USB charging cable and connect the USB plug to a USB wall charger or a powered computer USB socket.
2. Then connect the USB-C end to the earphones USB-C socket

***Note:** During charging, the earphone indicator will blink green. When fully charged, the indicator will remain illuminated.*

3.1 Status Indicator

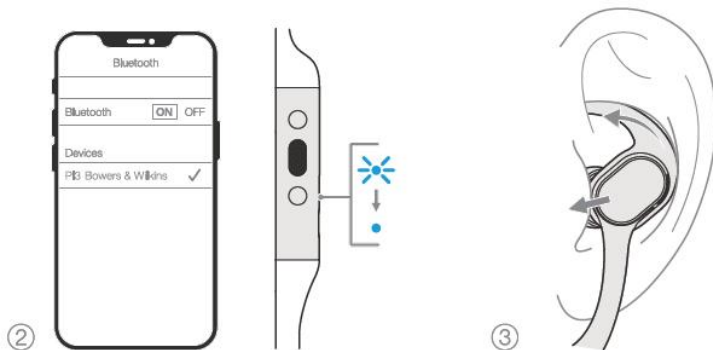
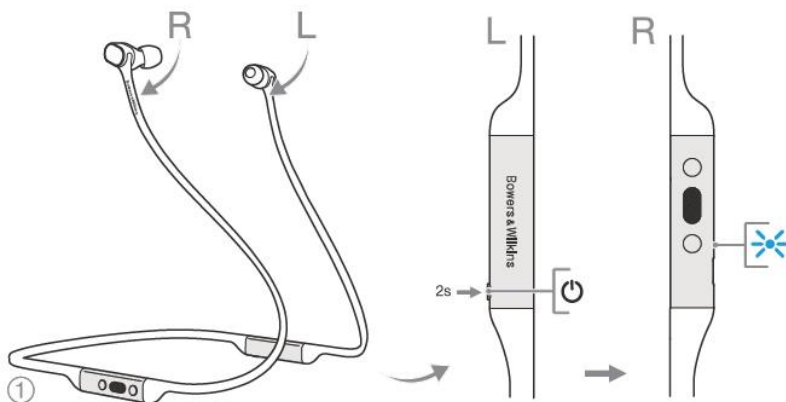
The status indicator is located on the right control unit next to the USB-C socket.

Illumination	Indication
White (after power on)	Battery charge > 50%
Amber (after power on)	Battery charge > 30%
Red (after power on)	Battery charge < 10%
Red flashing (after power on)	Battery charge insufficient for earphone operation
Blue & Red blinking	Pairing Mode Enabled
Blue (2 sec solid)	Pairing successful
Flash Blue	Incoming call
Green blinking	Rapid charging
Green solid	Battery charge full, trickle charging
White flash (every 4 sec)	Sleep mode, battery charge > 50%
Amber flash (every 4 sec)	Sleep mode, battery charge > 30%
Red flash (every 4 sec)	Sleep mode, battery charge < 10%

4. Wearing Your Earphones

Wearing your earphone correctly will help ensure the best possible experience. The ear pieces on the PI3 are designed to seal when inserted into the ear canal. The ear pieces are also designed be used with the stabilizer fins and must be installed prior to use. Both ear tips & stabilizer fins comes in three sizes (Small Medium, Large).

1. Hold the earphone by the left and right control unit, the USB-C & LED should be visible on the right hand side.
2. Hang the earphones around your neck comfortably, the ear pieces should be at equal length
3. Identify the left and right ear piece by finding the identification legends located on either side of ear pieces.
4. Place the earphones in your ear so that the tips sit comfortably at the opening of the ear canal.
5. Ensure the stabilizer fins are nestled comfortably in the concha. Try another size if they do not fit. Different sized ear tips & stabilizer fins can be used to ensure the best possible fit.



***Note:** Out of the box, the Medium size ear tip & stabilizer fin come installed on the earphones. To change out stabilizer fin, the ear tips must first be removed.*

4.1 Stowing the Earpiece

When not being worn in the ear, the PI3 earpieces can be magnetically clipped together convenient & easy stowing.

Note: Take special care when wearing your earphones, hair or accessories trapped between your ears and the ear pieces may interfere with proximity sensing.

5. Bluetooth Connectivity

5.1 Pairing

Your Bowers & Wilkins PI3 earphones are designed to stream music wirelessly from Bluetooth audio devices, such as smartphones, tablets, or computers. To do so, the earphones & device must first be paired.

1. The first time you switch on your earphones, Bluetooth pairing mode will be enabled, the indicator will blink blue.
2. If pairing mode is not enabled, please hold the power button for 5 seconds, let go when the indicator blinks blue & red, an audible cue will also be presented.
3. Ensure the Bluetooth feature is enabled on the device, your Bowers & Wilkins earphones will appear in the discovery list, select it to start pairing.
4. The indicator will blink blue & red while pairing is in progress and will change to continuous blue & an audible cue presented when successfully paired.

Your headphones can remember up to eight paired Bluetooth Devices. Repeat the above steps to pair more devices.

***Note:** Your earphones will automatically exit Bluetooth pairing mode if no device is paired within 5 minutes. If pairing fails, the indicator will rapid flash blue, please try pairing again*

5.2 Switching Between Two Connected Devices

Your earphones can connect up to two devices at the same time. However, you can only play audio or take calls from one device at a time.

To switch between two devices:

1. Pause audio on the first device, or use the earphone's play/pause button.
2. Play audio from the second device and the earphone will switch over.

When streaming audio, receiving a call on the second device will automatically pause playback and the call will be routed automatically to your earphones. Ending the call will automatically resume playback from the first device.

6. Earphone Reset

Your earphones can be reset to factory settings. When powered on, simultaneously hold down the Power Button, Volume Up, Volume Down for 10 seconds until the indicator light turns off, let go when the indicator lights up again.

8. Caring For Your Earphones

Your earphones can be cleaned by a damp cloth and gently dabbing until clean. Do not use cleaning detergents, rubbing alcohol, or chemical cleaners/polish, doing so may damage your earphones.

9. Specifications

Technical Features	Bluetooth 5.0 with AptX-Adaptive technology Custom Dual Driver & Quad Amp technology Magnetic Clipping Earpiece USB-C charging
Bluetooth Codec	AptX-Adaptive AptX-Class AptX-HD AAC SBC
Bluetooth Profiles	A2DP v1.3.1 AVRCP v1.6.1 HFP v1.7.1 HSP v1.2 BLE GATT (Generic Attribute Profile)
Frequency Band	Tx mode: 2402MHz to 2480MHZ, ISM Band, Rx mode: 2402MHz to 2480MHz, ISM Band
RF output power	5.0 dBm
Drive Units	9.2mm Dynamic, Custom Balanced Armature
Frequency Range	10Hz to 20kHz
Input Impedance	-
Distortion (THD)	<0.3% (1kHz/10mW)
Battery Life	12 hrs Bluetooth
Charging	15 minute charge = 2 hrs Bluetooth
Inputs	Bluetooth, USB-C Audio
Boxed Accessories	20cm USB-A to USB-C cable, Storage Case
Weight	32 grams

10. Service / Support

If you need help troubleshooting a specific problem, or simply have a question you would like answered, please initially consult the Headphone support section of the Bowers & Wilkins website: www.bowerswilkins.com.