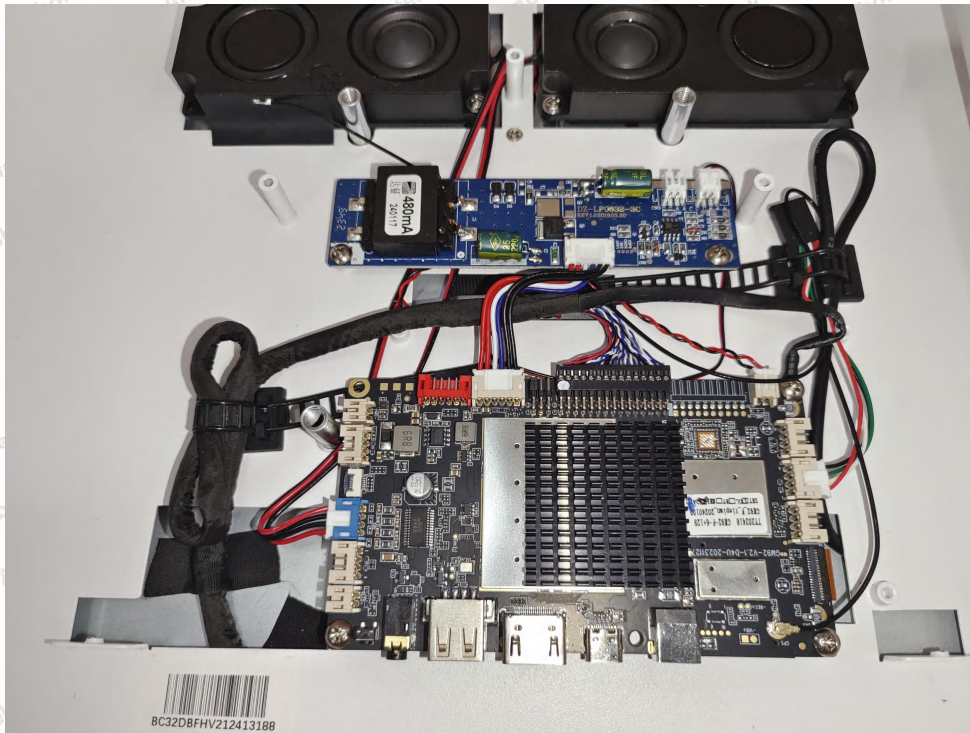
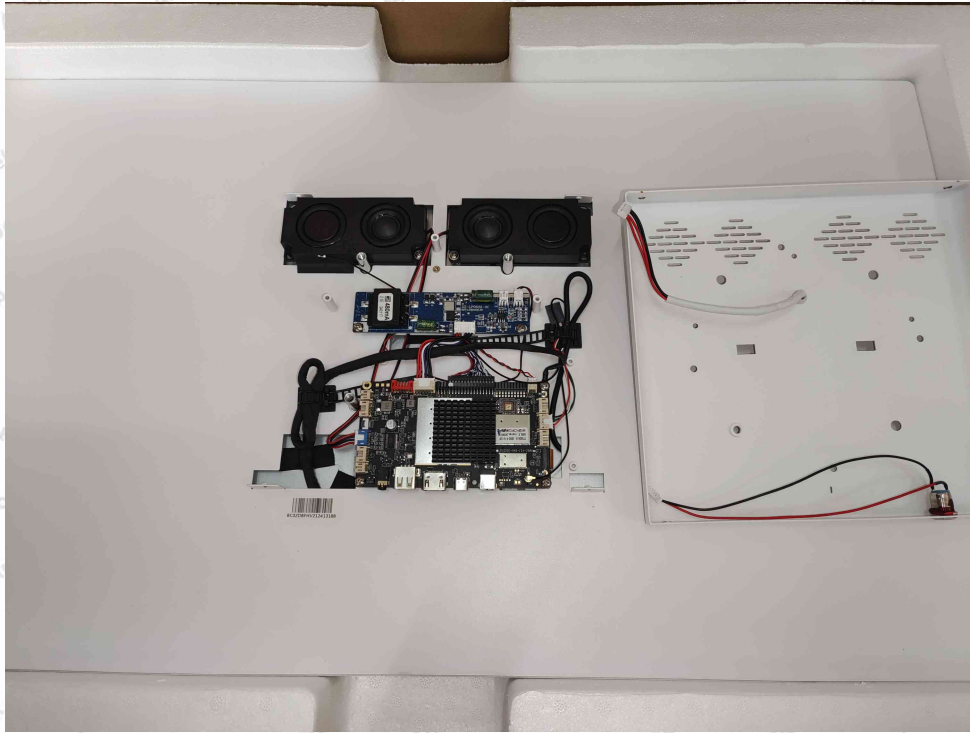
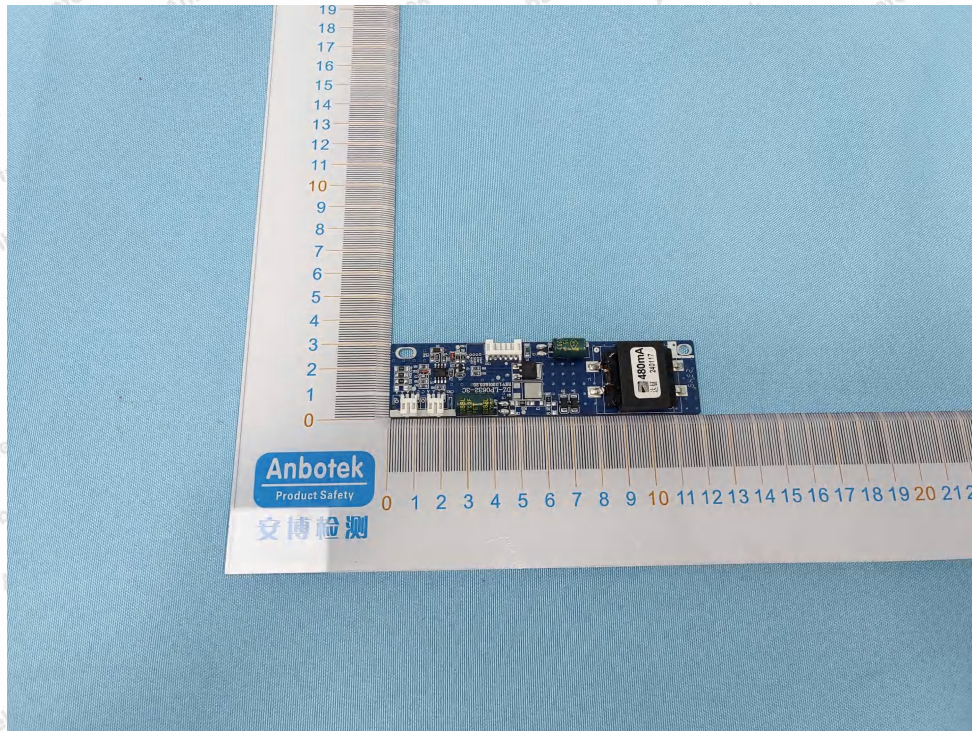
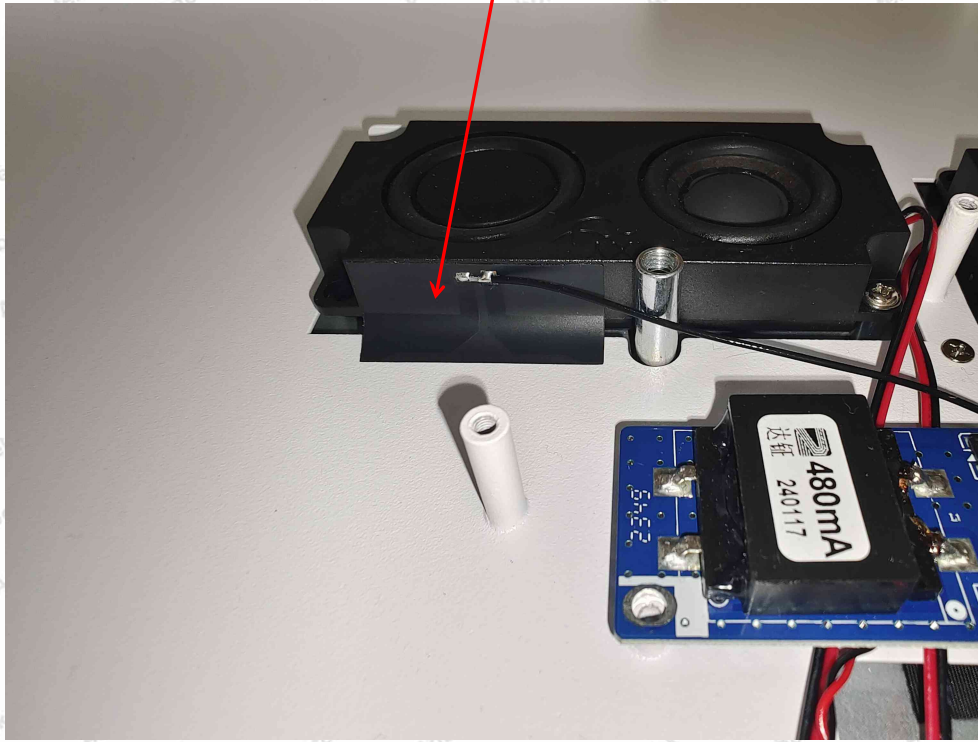
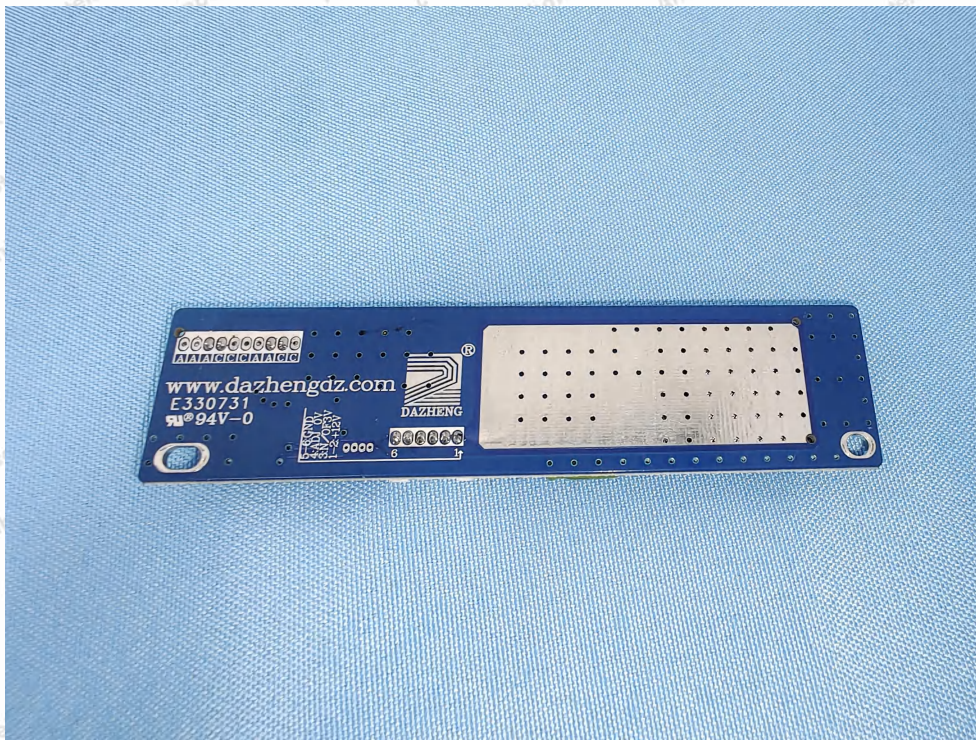
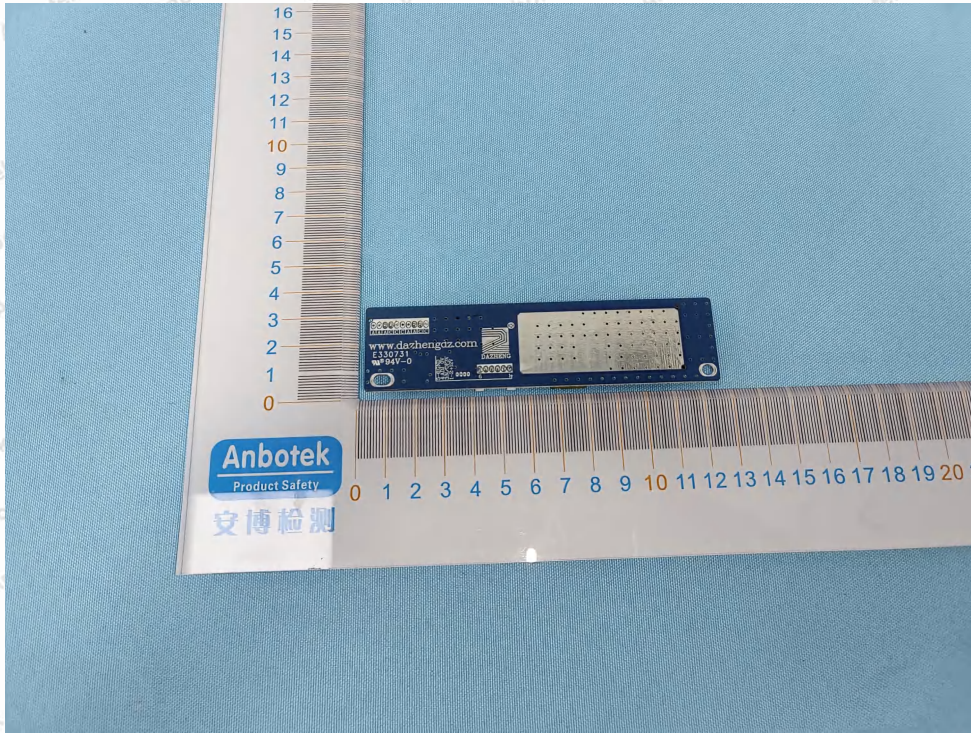


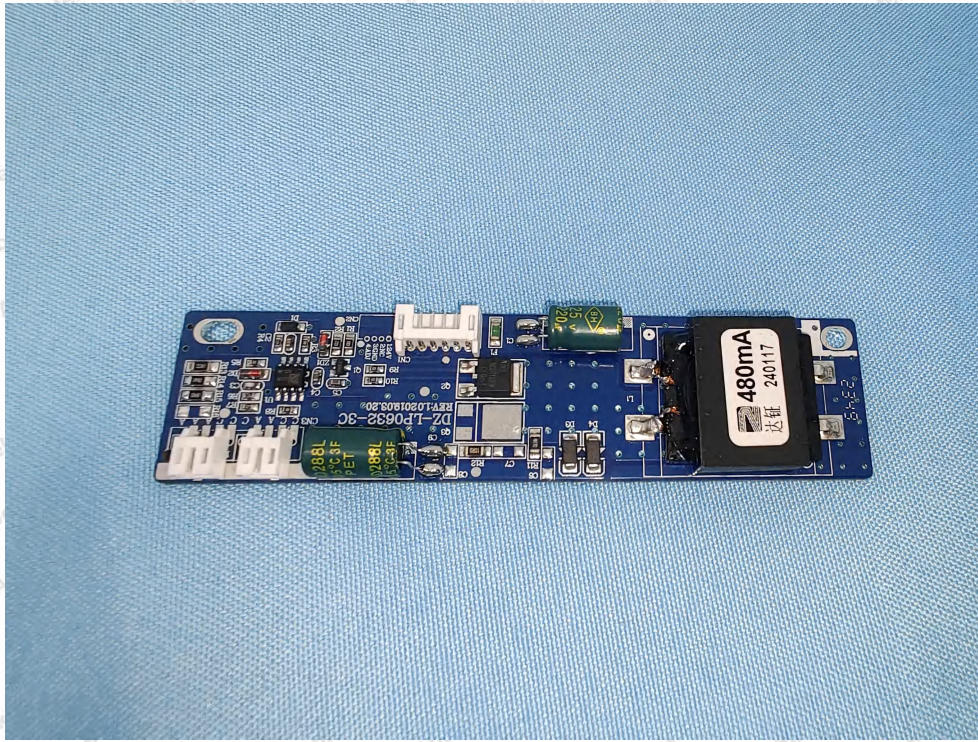
Appendix III -- Internal Photograph

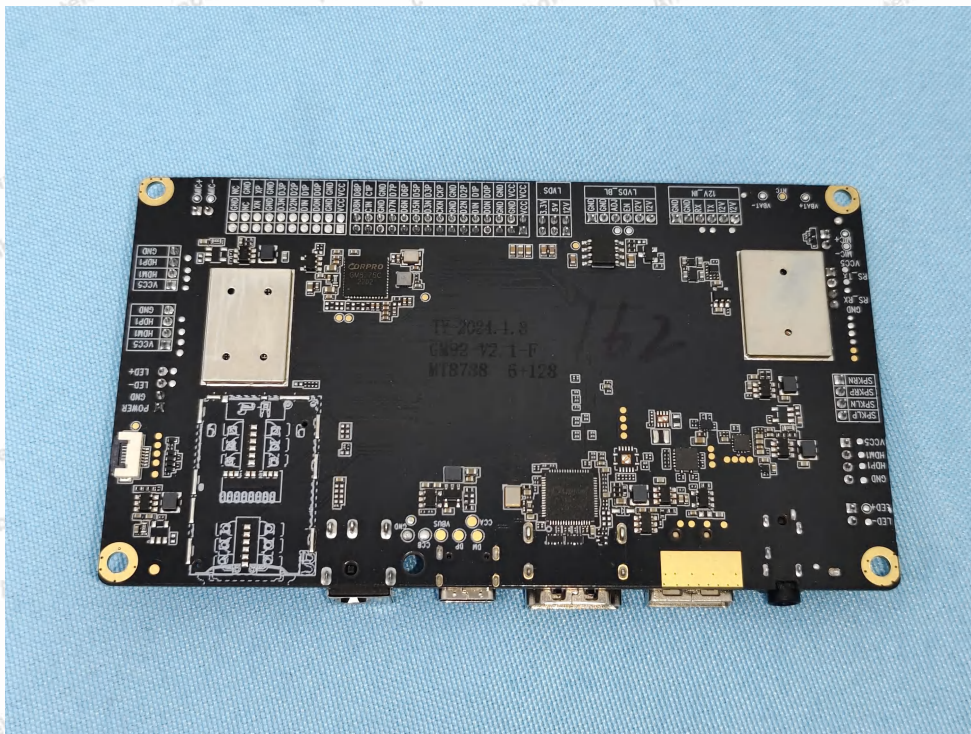
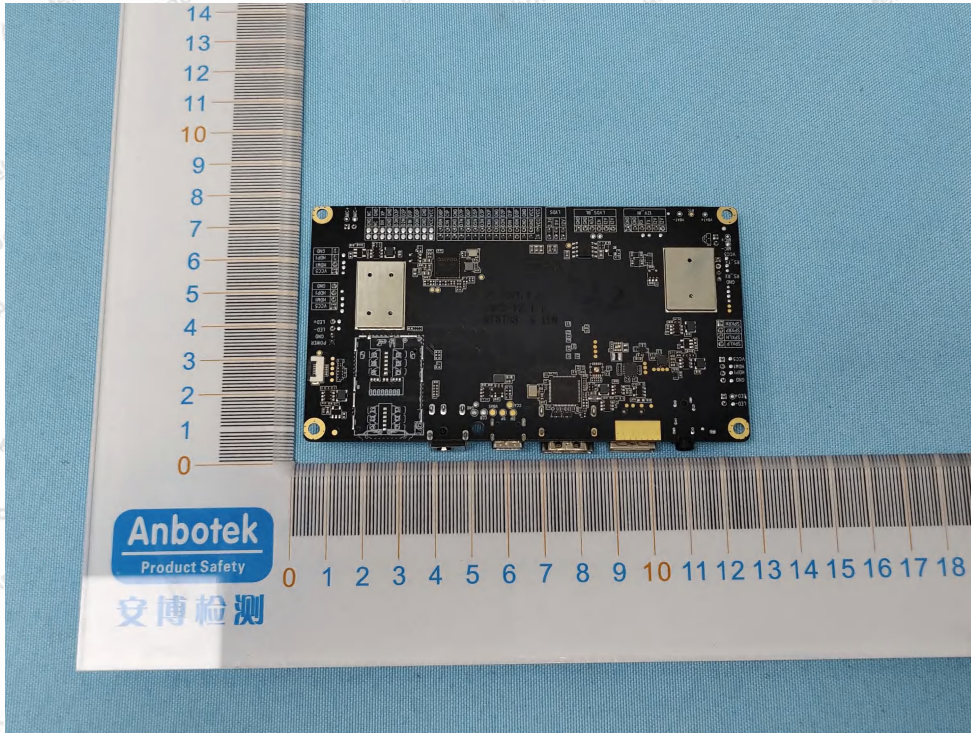


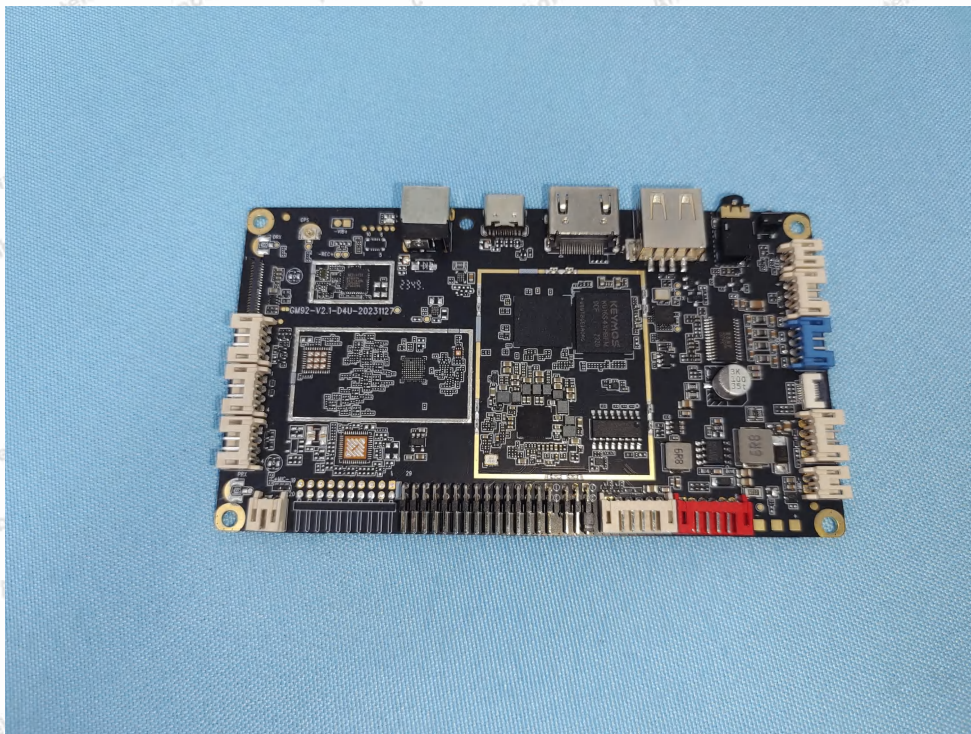
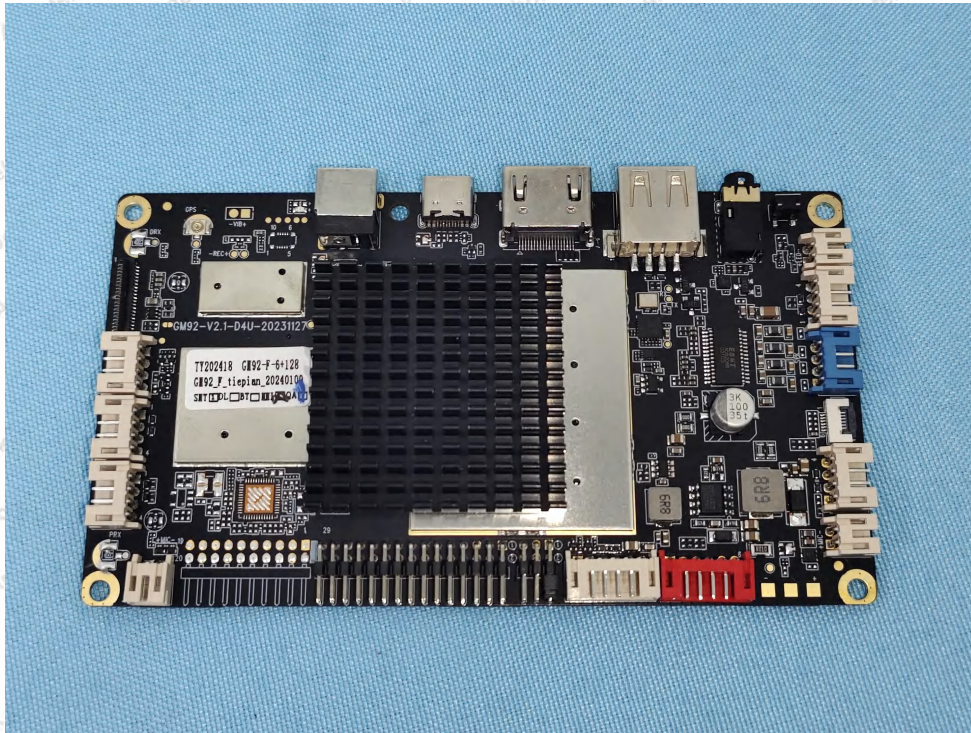
ANT

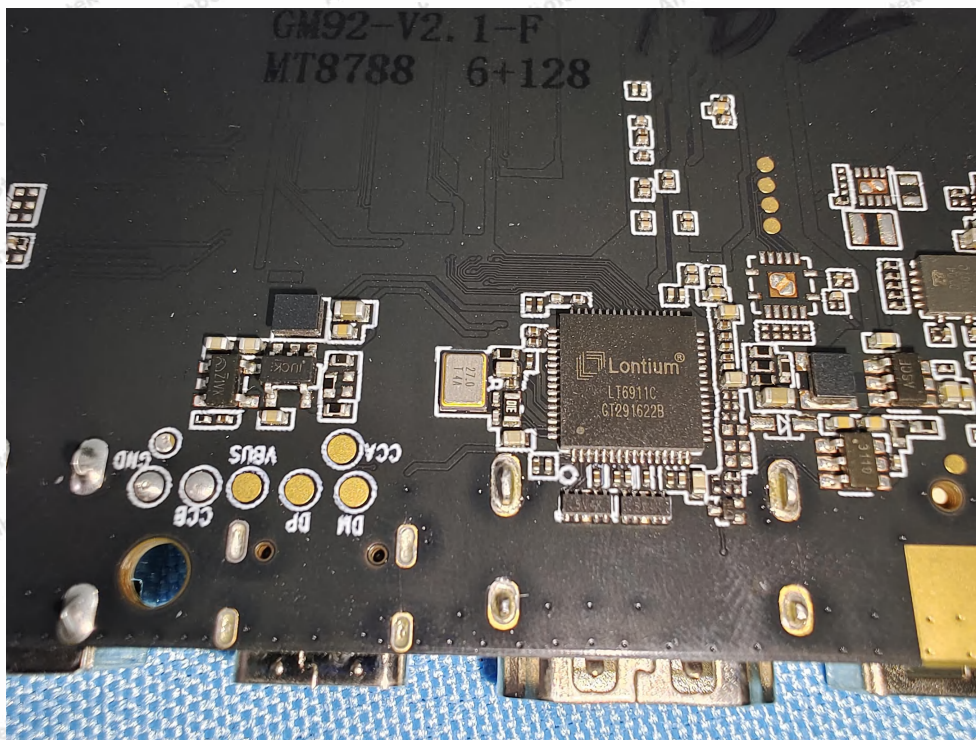
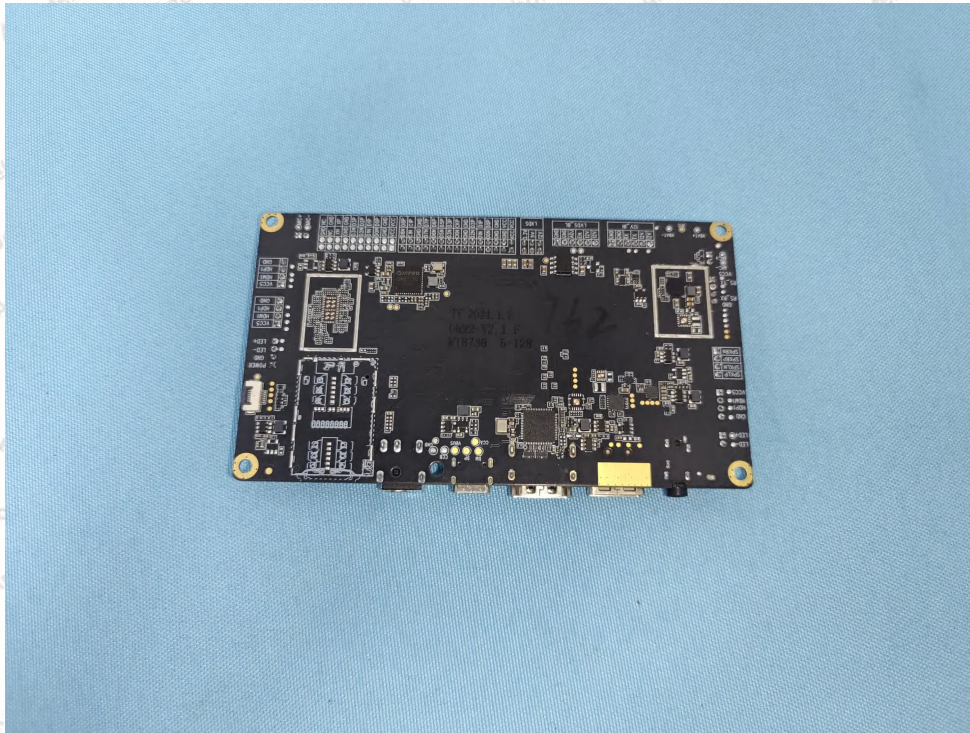


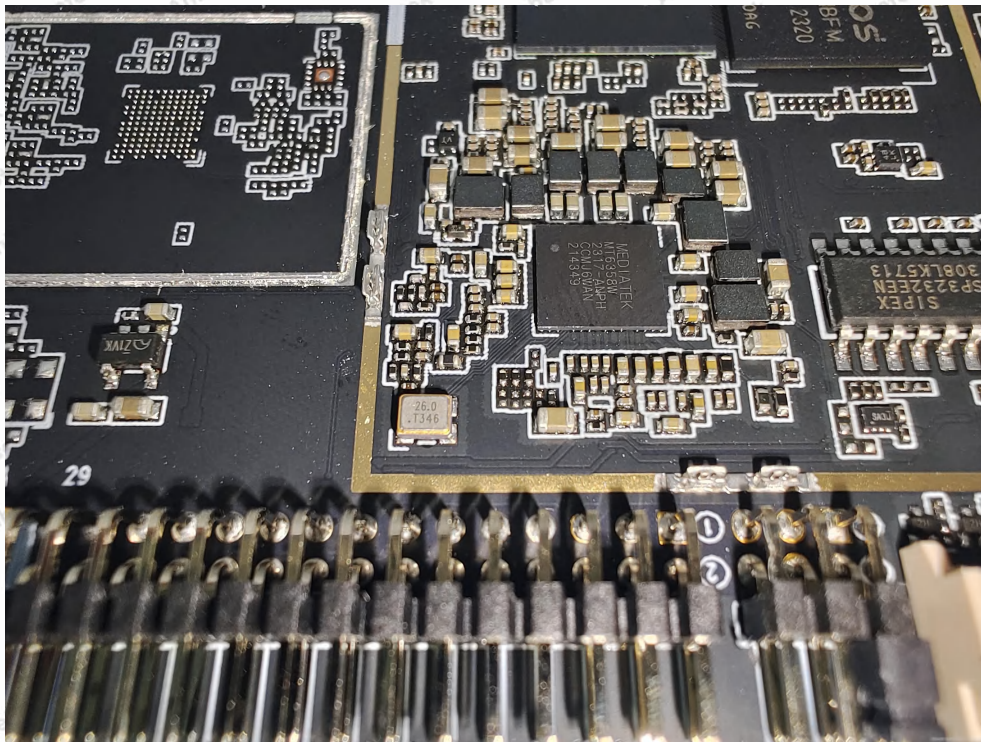
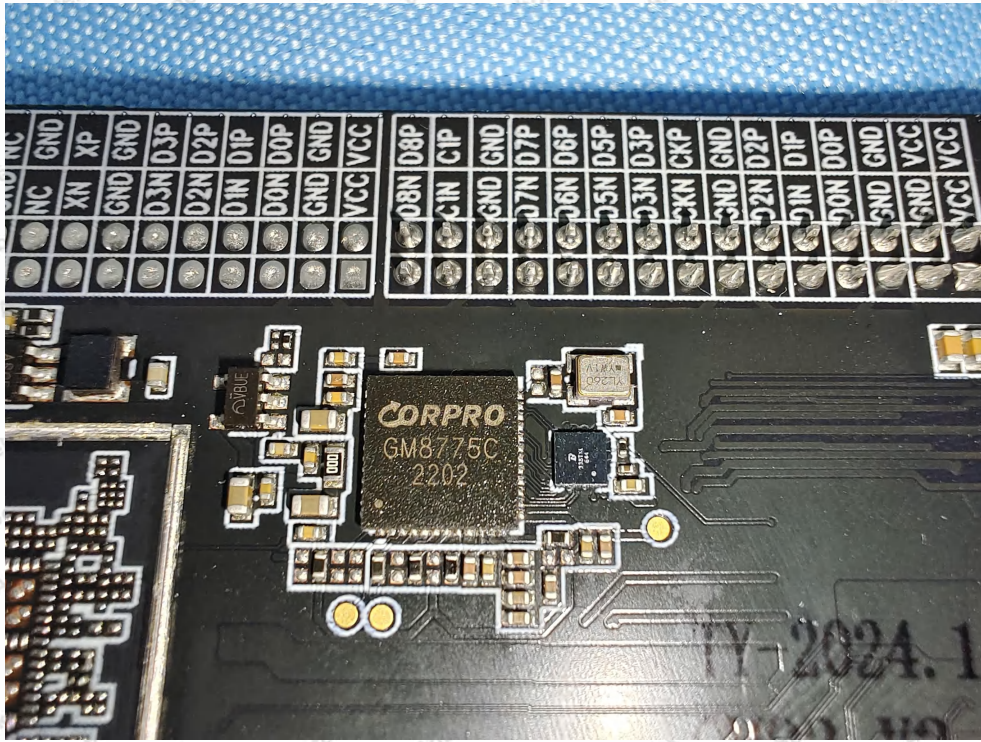


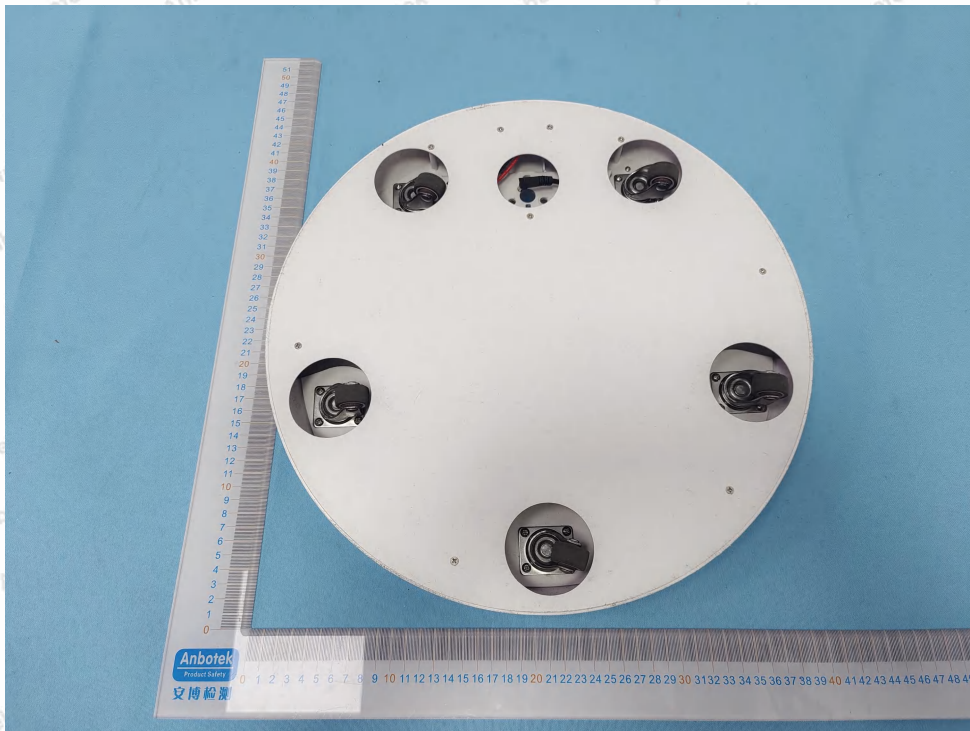
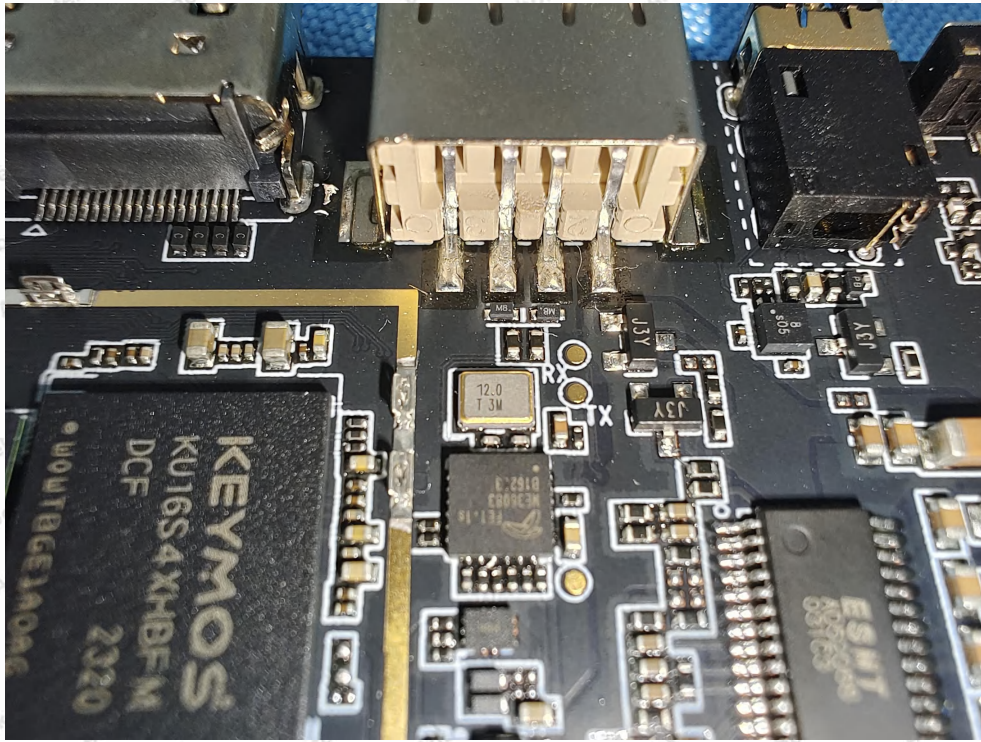


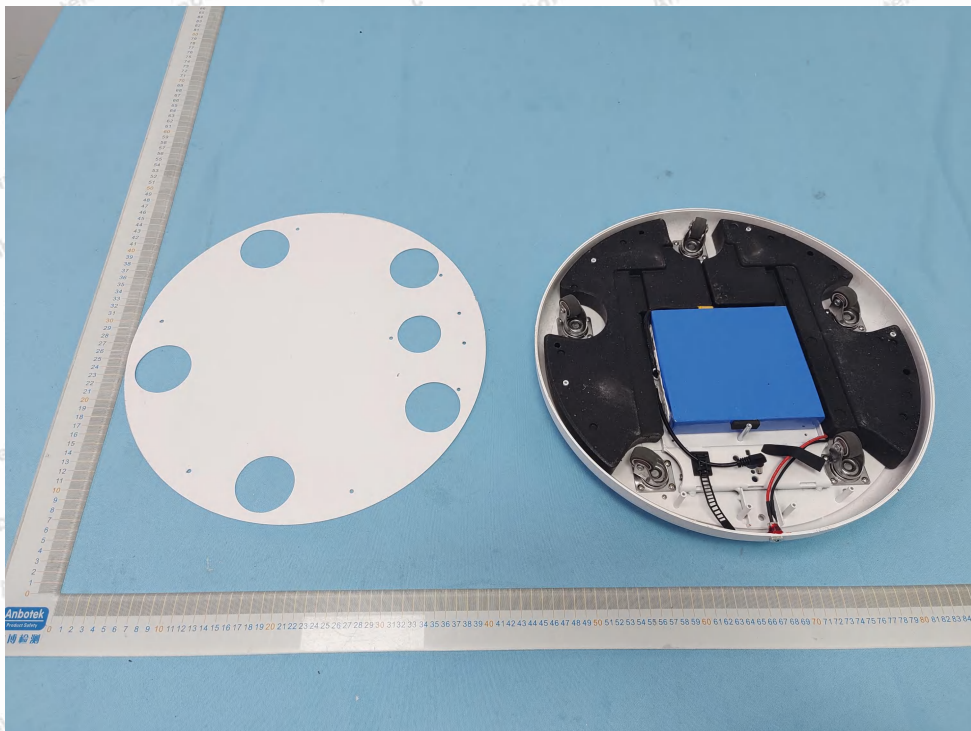


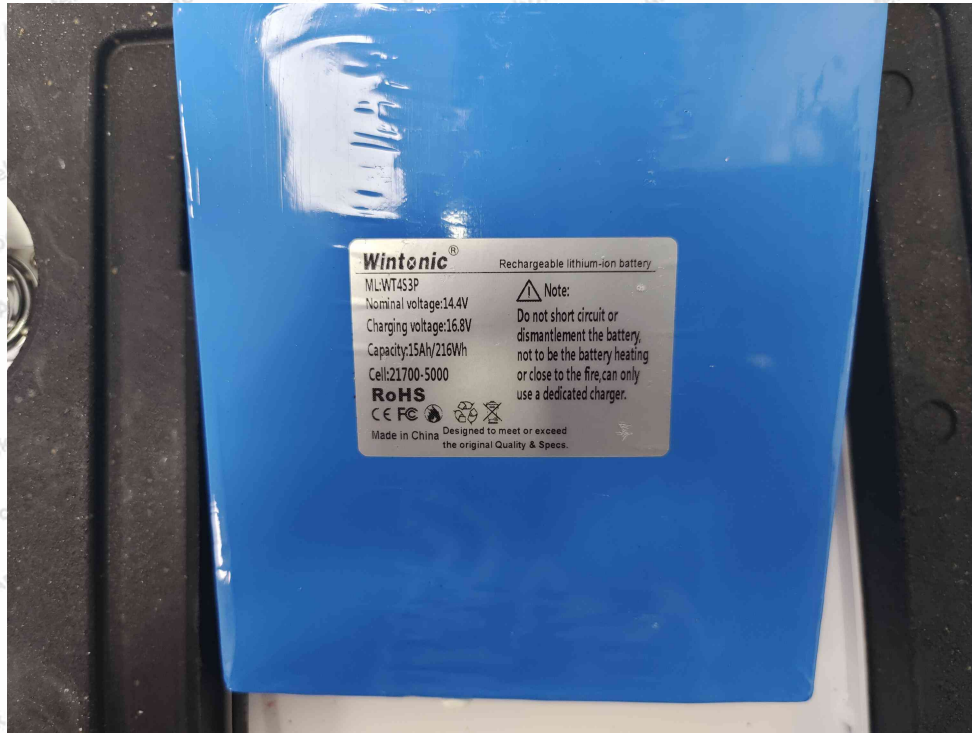












Wintonic® Rechargeable lithium-ion battery
ML:WT453P
Nominal voltage:14.4V
Charging voltage:16.8V
Capacity:15Ah/216Wh
Cell:21700-5000
RoHS
CE FC
Made in China
Designed to meet or exceed
the original Quality & Specs.

Note:
Do not short circuit or
dismantle the battery,
not to be the battery heating
or close to the fire, can only
use a dedicated charger.

