

## 6.7 Host Printer Test Setup Photos



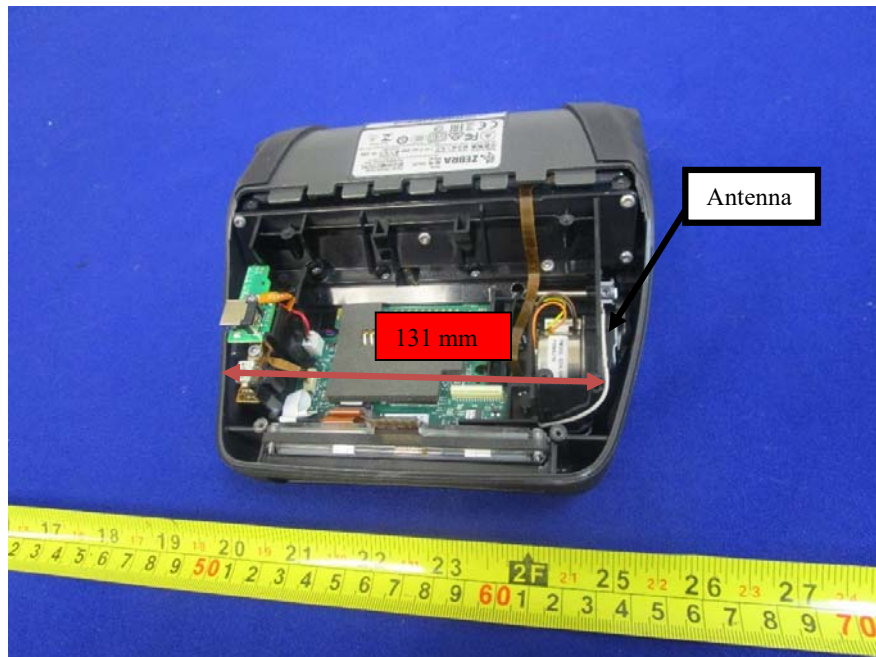
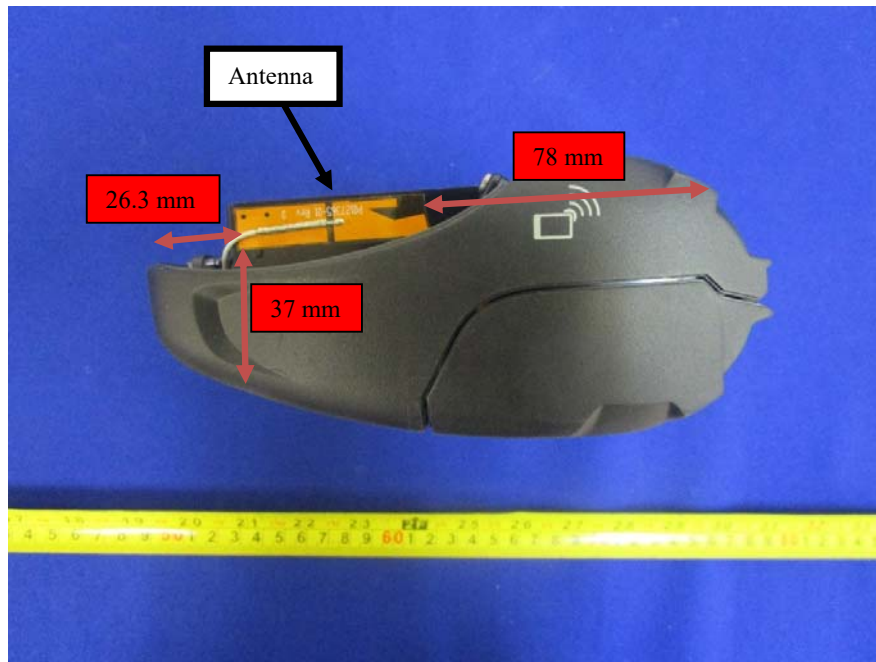
Bottom Touch



Left Side with 5mm distance from the phantom

## 6.8 Antenna Location

### Radio & Antenna Location



**Remark:**

SAR is not required because the distance from the antenna to the edge is > 25 mm as per KDB 941225 D06 Hotspot Mode SAR. So top, rear, right and front sides are not required.

**EUT Test Position for SAR**



Test Position-1 (Bottom Side with 0mm distance)



Test Position-2 (Left Side with 5mm distance)

**6.9 Host Printer Accessories analysis**



Regular battery installed



Extended battery installed

The extended battery has larger capacity. The printer is to be used with the bottom side against human body, the use of extended battery will increase the separation of printer bottom side to human body, thus decreasing the SAR value. The SAR testing in current report was performed with regular battery to represent the worst case.