

Notes:

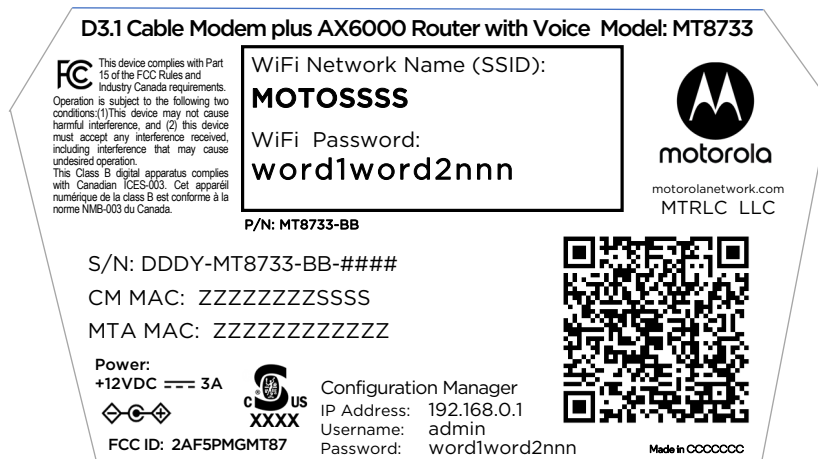
- 1) Material : Black Text on White Polyester or equivalent with Permanent adhesive
- 2) All dimensions are in mm
- 3) The serial number will be of the Format DDDY-MT8733-BB-#### where:
 DDD = the Julian date of the day manufacture. Example January 1 is 001, Feb 1 is 032, December 31 = 365. Tolerance = +/- 3 days
 Y = the significant digit of the Year of manufacture. Example 2010 = 0, 2011=1, 2017=7.
 MT8733= the exact Model Number of the Product, printed as shown.
 BB = country of origin (location of manufacture), 10=China, 30=Vietnam, 40=Taiwan
 #### = a sequential number from 0001 to 9999 that indicates the number of the unit produced of that type, on that day.
- 4) Printing and material must meet UL Rub Test requirements
- 5) SSID to be MOTOSSSS where SSSS is the last 4 digits of the CM MAC.
- 5a) MTA MAC address shall be CM MAC + 1
- 6) The password "word1word2nnn" (in two locations that match) is constructed as a randomly chosen word from the "ZoomWiFiWords.xlsx" file's adjective column (word1), a randomly chosen word from the noun column (word2), and a randomly selected 3-digit number "nnn" that cannot contain a 0 or a 1 (must use only digits 2,3,4,5,6,7,8,9). For example, "plasticbarn352".
- 7) XXXX is to be the 4-letter Factory ID for the product as specified by Bureau Veritas (pending)
- 8) CCCCCC is to be the Country of Origin, use "China" for product manufactured in China, or use "Vietnam" for product manufactured in Vietnam.
- 9) The Part Number (P/N) shall be of the form MT8733-BB, where
 BB=country of origin (location of manufacture), 10=China, 30=Vietnam, 40=Taiwan
- 10) All fonts, sizes, styles, spacing, alignment, positioning, locations, logos and line thicknesses are to be exactly as shown and as embedded in this document, except for the outside border line which is shown for reference only, and is not to be printed.
- 11) Add QR code image in location as shown by example below, size 25mmx25mm. QR code content to be as follows:

WIFI:T:WPA2;S:MOTOSSSS;P:word1word2nnn;;DEVICE:M:MMMMMMMMSSSS;S:DDY-MT8733-BB-####;T:MT8733;;

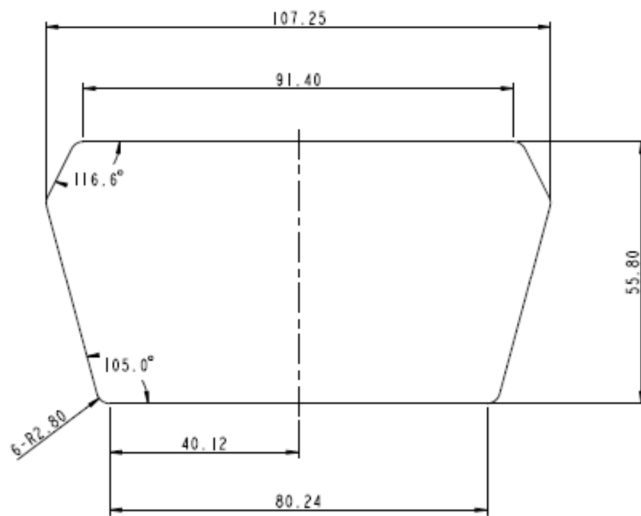
Where above text in **red** is static, always included exactly as shown.

The above text in **blue** is variable and shall be as described in the above notes 3, 5, 6 and 9.

- 12) A clear, high-resolution image of a printed sample of the label must be provided for approval
- 13) see label dimensions on page 2



PROPRIETARY AND CONFIDENTIAL THE INFORMATION CONTAINED IN THIS DRAWING IS THE SOLE PROPERTY OF Zoom Telephonics, Inc. ANY REPRODUCTION IN PART OR AS A WHOLE WITHOUT THE WRITTEN PERMISSION OF Zoom Telephonics, Inc IS PROHIBITED.			UNLESS OTHERWISE SPECIFIED:	NAME	DATE	Zoom Telephonics Inc 225 Franklin Street, Boston MA 02110 USA		
			DIMENSIONS ARE IN MM	DRAWN		TITLE: Compliance Label, MT8733 Production Version		
			TOLERANCES:	CHECKED				
			FRACTIONAL +/-	ENG APPR.				
			ANGULAR:	MFG APPR.				
			MACH +/- BEND +/-	Q.A.				
			TWO PLACE DECIMAL +/-	COMMENTS:		SIZE	DWG. NO.	REV
			THREE PLACE DECIMAL +/-			A	36461-1	C1
			INTERPRET GEOMETRIC TOLERANCING PER:			SCALE	WEIGHT:	SHEET 1 OF 1
			MATERIAL:			1:1		
	NEXT ASSY	USED ON	FINISH:					
	APPLICATION		DO NOT SCALE DRAWING					



SIZE A	DWG. NO. 36461-1	REV C1
SCALE 1:1	WEIGHT:	SHEET 2 OF 2

Notes:

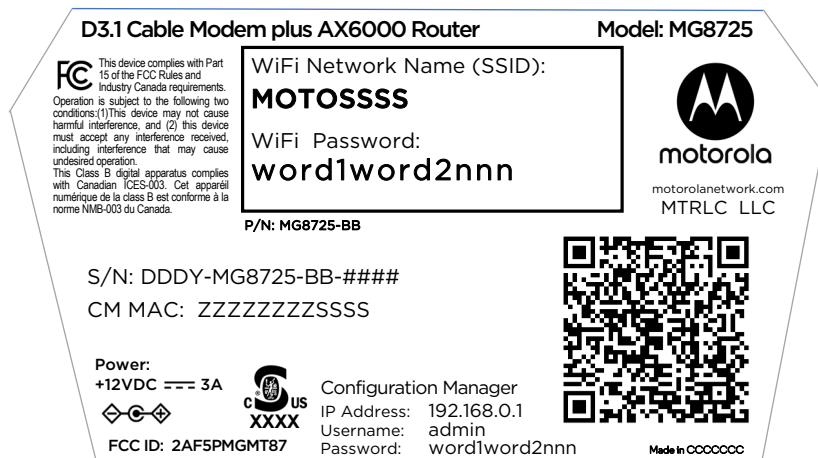
- 1) Material : Black Text on White Polyester or equivalent with Permanent adhesive
- 2) All dimensions are in mm
- 3) The serial number will be of the Format DDDY-MG8725-BB-#### where:
 DDD = the Julian date of the day manufacture. Example January 1 is 001, Feb 1 is 032, December 31 = 365. Tolerance = +/- 3 days
 Y= the significant digit of the Year of manufacture. Example 2010 = 0, 2011=1, 2017=7.
 MG8725= the exact Model Number of the Product, printed as shown.
 BB = country of origin (location of manufacture), 10=China, 30=Vietnam, 40=Taiwan
 #### = a sequential number from 0001 to 9999 that indicates the number of the unit produced of that type, on that day.
- 4) Printing and material must meet UL Rub Test requirements
- 5) SSID to be MOTOSSSS where SSSS is the last 4 digits of the CM MAC.
- 6) The password "word1word2nnn" (in two locations that match) is constructed as a randomly chosen word from the "ZoomWiFiWords.xlsx" file's adjective column (word1), a randomly chosen word from the noun column (word2), and a randomly selected 3-digit number "nnn" that cannot contain a 0 or a 1 (must use only digits 2,3,4,5,6,7,8,9). For example, "plasticbarn352".
- 7) XXXX is to be the 4-letter Factory ID for the product as specified by Bureau Veritas (pending)
- 8) CCCCCC is to be the Country of Origin, use "China" for product manufactured in China, or use "Vietnam" for product manufactured in Vietnam.
- 9) The Part Number (P/N) shall be of the form MG8725-BB, where
 BB=country of origin (location of manufacture), 10=China, 30=Vietnam, 40=Taiwan
- 10) All fonts, sizes, styles, spacing, alignment, positioning, locations, logos and line thicknesses are to be exactly as shown and as embedded in this document, except for the outside border line which is shown for reference only, and is not to be printed.
- 11) Add QR code image in location as shown by example below, size 25mmx25mm. QR code content to be as follows:

WIFI:T:WPA2;S:MOTOSSSS;P:word1word2nnn;;DEVICE:M:MMMMMMMMSSSS;S:DDDY-MG8725-BB-####;T:MG8725;;

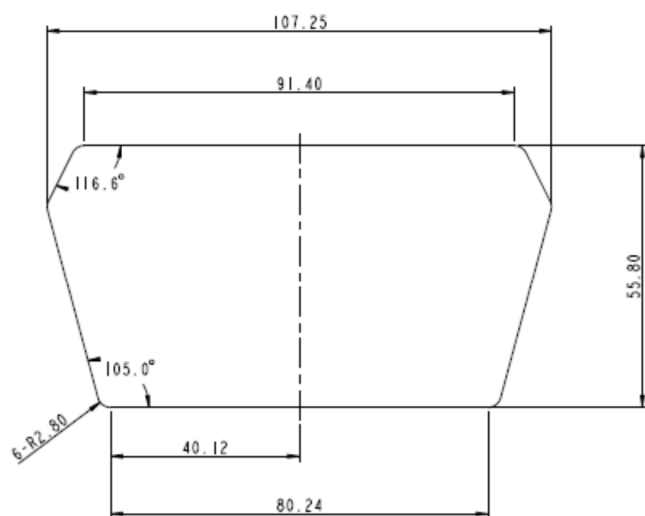
Where above text in **red** is static, always included exactly as shown.

The above text in **blue** is variable and shall be as described in the above notes 3, 5, 6 and 9.

- 12) A clear, high-resolution image of a printed sample of the label must be provided for approval
- 13) see label dimensions on page 2



PROPRIETARY AND CONFIDENTIAL THE INFORMATION CONTAINED IN THIS DRAWING IS THE SOLE PROPERTY OF Zoom Telephonics, Inc. ANY REPRODUCTION IN PART OR AS A WHOLE WITHOUT THE WRITTEN PERMISSION OF Zoom Telephonics, Inc IS PROHIBITED.			UNLESS OTHERWISE SPECIFIED:	NAME	DATE	Zoom Telephonics Inc 225 Franklin Street, Boston MA 02110 USA		
			DIMENSIONS ARE IN MM	DRAWN		TITLE: Compliance Label, MG8725 Production Version		
			TOLERANCES: FRACTIONAL +/-	CHECKED				
			ANGULAR: MACH +/- BEND +/- TWO PLACE DECIMAL +/-	ENG APPR.				
			THREE PLACE DECIMAL +/-	MFG APPR.				
			INTERPRET GEOMETRIC TOLERANCING PER:	Q.A.				
			MATERIAL:	COMMENTS:		SIZE	DWG. NO.	REV
	NEXT ASSY	USED ON	FINISH:			A	36462-1	A
	APPLICATION		DO NOT SCALE DRAWING			SCALE 1:1	WEIGHT:	SHEET 1 OF 1



SIZE A	DWG. NO. 36462-1	REV A
SCALE 1:1	WEIGHT:	SHEET 2 OF 2

