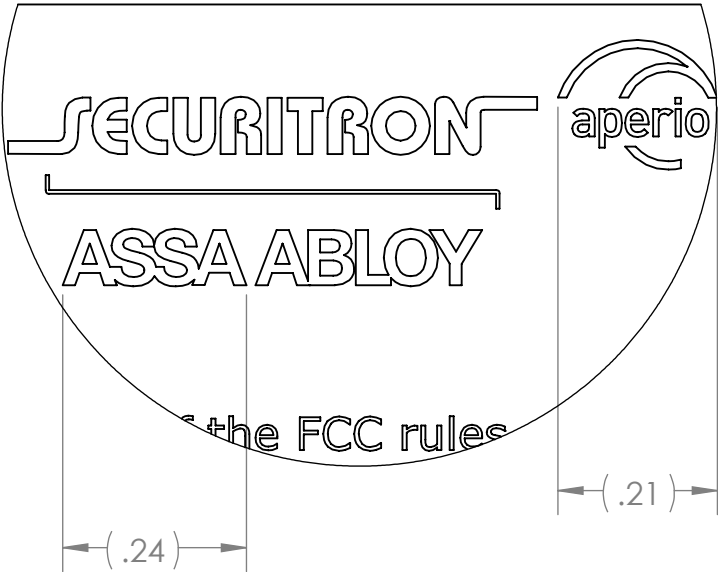
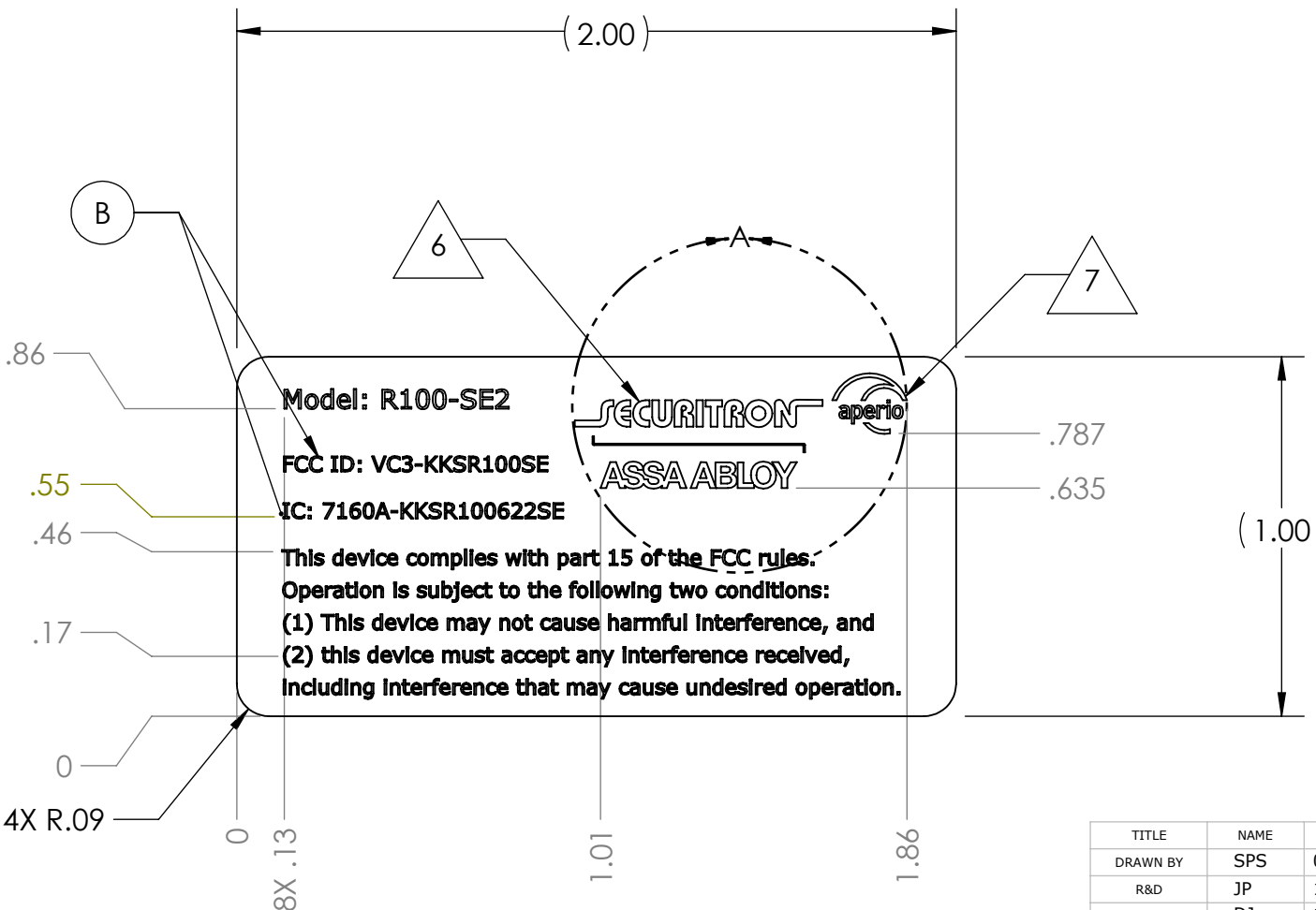


NOTES: UNLESS OTHERWISE SPECIFIED.

- COMPONENTS AND OR PARTS TO COMPLY WITH EU DIRECTIVE 2011/65/EC (RoHS).
- MATERIAL: COATED PAPER WITH PERMANENT LATEX ADHESIVE.  
USE LABEL P/N: 3000021.006 OR HES APPROVED EQUIVALENT.
- WHITE LABEL WITH BLACK LETTERING.
- FINISH: PRINTED IN DENSE BLACK INK. TEXT SHALL BE SHARP AND LEGIBLE.
- FONT: ARIAL  
FONT HEIGHT: 4 POINT MINIMUM  
ALIGNMENT: LEFT JUSTIFIED
- SECURITRON LOGO DEFINED BY DRAWING 49-00052.
- APERIO LOGO DEFINED BY DRAWING 4000505.002.
- PARTS SHALL BE CLEAN AND FREE OF FOREIGN MATERIAL.
- PARTS SHALL BE PACKAGED TO PREVENT DAMAGE RESULTING FROM SHIPPING, STORAGE, AND HANDLING.



DETAIL A  
SCALE 4 : 1  
SIZE RELATIONSHIP SHALL  
BE MAINTAINED



THIS DOCUMENT IS THE CONFIDENTIAL PROPERTY OF HES, INC. AND IS LOANED SUBJECT TO RETURN UPON DEMAND. TITLE TO THIS DOCUMENT IS NEVER TO BE SOLD OR TRANSFERRED FOR ANY REASON. THIS DOCUMENT IS TO BE USED ONLY PURSUANT TO WRITTEN LICENSE OR WRITTEN INSTRUCTIONS OF HES, INC. ALL RIGHTS TO DESIGN AND INVENTIONS ARE RESERVED BY HES, INC. POSSESSION OF THE DOCUMENT IS ACCEPTED SUBJECT TO THE FOREGOING. © HES, INC. 2015

UNLESS OTHERWISE SPECIFIED  
DIMENSIONS ARE IN INCHES  
TOLERANCES ARE:  
FRACTIONAL ±1/32  
ANGLES ±1°  
.XX ±.01  
.XXX ±.005

DO NOT SCALE DRAWING  
INTERPRET PER ASME Y14.5M-2009

REVISIONS						
ZONE	REV.	CR#	DESCRIPTION	REV BY	APPROVED	DATE
	A	502-13	PRODUCTION RELEASE	JB	CR BOARD	1/3/2014
	B	130-15		SPS	CR BOARD	5/14/2015

TITLE	NAME	DATE
DRAWN BY	SPS	09/25/13
R&D	JP	12/06/13
MFG ENGR	DJ	12/06/13
QA	RC	12/06/13



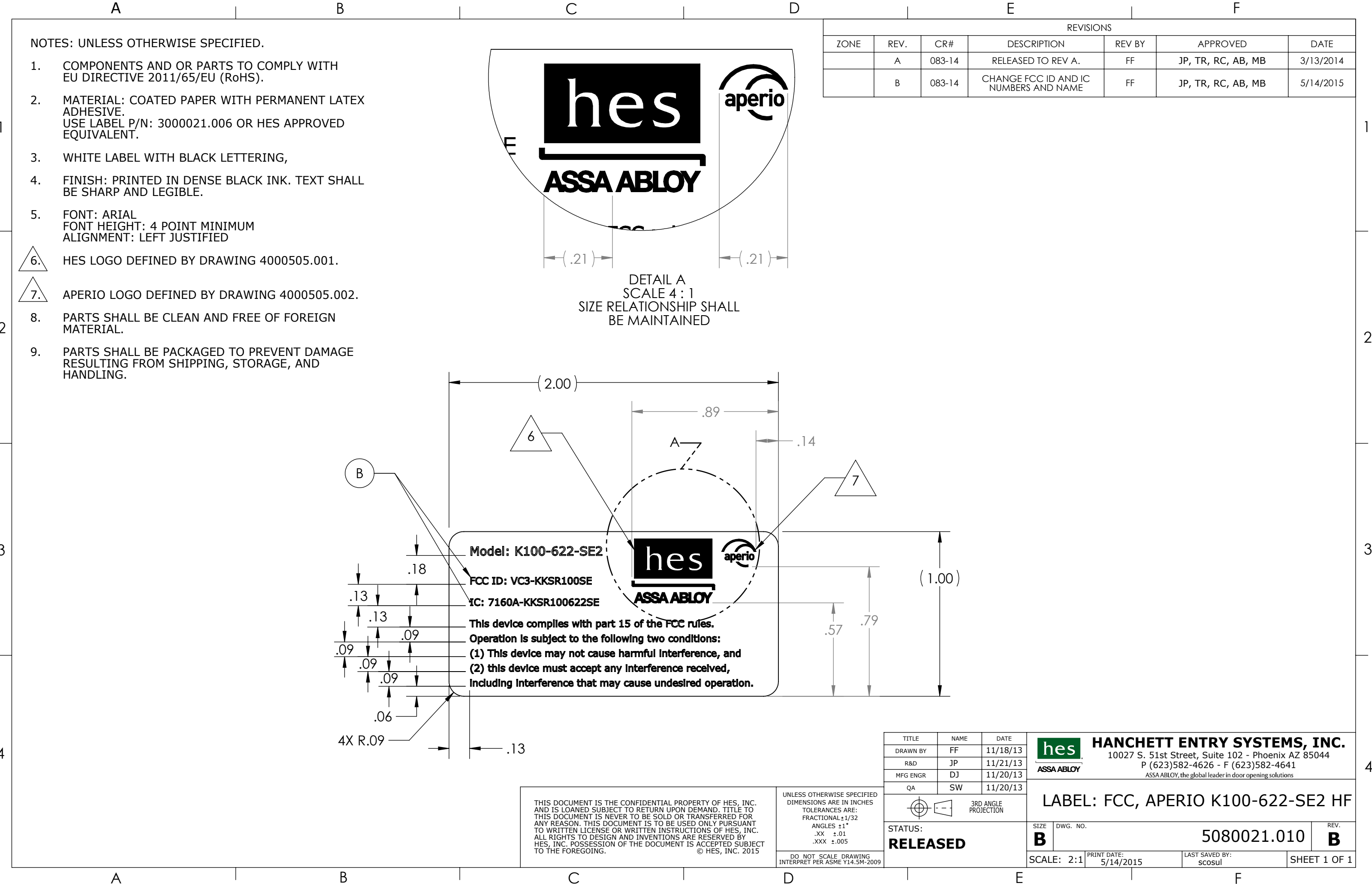
STATUS:  
**RELEASED**

**HANCHETT ENTRY SYSTEMS, INC.**  
10027 S. 51st Street, Suite 102 - Phoenix AZ 85044  
P (623)582-4626 - F (623)582-4641  
ASSA ABLOY, the global leader in door opening solutions





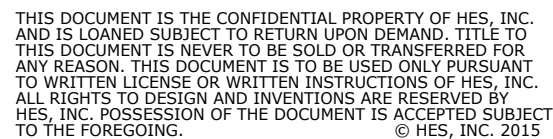
LABEL: FCC, APERIO, R100-SE2, HF						
SIZE <b>B</b>	DWG. NO. <b>5080021.007</b>	REV. <b>B</b>				
SCALE: 2:1		PRINT DATE: 5/28/2015	LAST SAVED BY: danVand		SHEET 1 OF 1	

FAMILY NAME:



FAMILY NAME:

1. COMPONENTS AND OR PARTS TO COMPLY WITH EU DIRECTIVE 2011/65/EC (RoHS).
2. MATERIAL: COATED PAPER WITH PERMANENT LATEX ADHESIVE.  
USE LABEL P/N: 3000021.005 OR HES APPROVED EQUIVALENT.
3. WHITE LABEL WITH BLACK LETTERING,
4. FINISH: PRINTED IN DENSE BLACK INK. TEXT SHALL BE SHARP AND LEGIBLE.
5. FONT: ARIAL  
FONT HEIGHT: 4 POINT MINIMUM  
ALIGNMENT: LEFT JUSTIFIED
6.  HES LOGO DEFINED BY DRAWING 4000505.001.
7.  APERIO LOGO DEFINED BY DRAWING 4000505.002.
8. PARTS SHALL BE CLEAN AND FREE OF FOREIGN MATERIAL.
9. PARTS SHALL BE PACKAGED TO PREVENT DAMAGE RESULTING FROM SHIPPING, STORAGE, AND HANDLING.



UNLESS OTHERWISE SPECIFIED  
DIMENSIONS ARE IN INCHES  
TOLERANCES ARE:  
FRACTIONAL  $\pm 1/32$   
ANGLES  $\pm 1^\circ$   
.XX  $\pm .01$   
.XXX  $\pm .005$

TITLE	NAME	DATE
DRAWN BY	DS	11/20/13
R&D	JTP	10/28/13
MFG ENGR	DM	11/20/13
QA	SW	11/20/13

3RD ANGLE PROJECTION

STATUS:  
**RELEASED**

**hes** **HANCHETT ENTRY SYSTEMS, INC.**  
 10027 S. 51st Street, Suite 102 - Phoenix AZ 85044  
 P (623)582-4626 - F (623)582-4641  
 ASSA ABLOY, the global leader in door opening solutions

LABEL: FCC, APERIO KS100-640-SE2

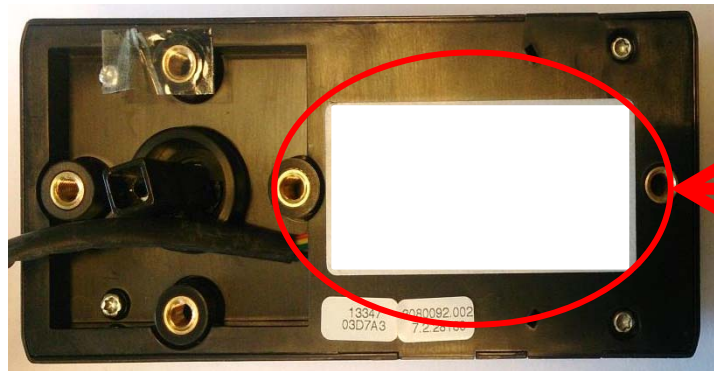
SIZE	DWG. NO.	REV.
<b>B</b>	5080021.009	<b>B</b>

SCALE: 2:1	PRINT DATE: 5/27/2015	LAST SAVED BY: SCOSUL	SHEET 1 OF 1
------------	--------------------------	--------------------------	--------------

REVISIONS						
ZONE	REV.	CR#	DESCRIPTION	REV BY	APPROVED	DATE
	A	147-14	RELEASE TO REV A	DS	DJ, SW, JTP	5/5/2014
	B	130-15		SPS	CR BOARD	5/14/2015

FCC label

FCC ID: VC3-KKSR100SE



FCC label

K100-622-SE2 FCC label position



FCC label

KS100-640-SE2 FCC label position



FCC label

R100-SE2 FCC label position