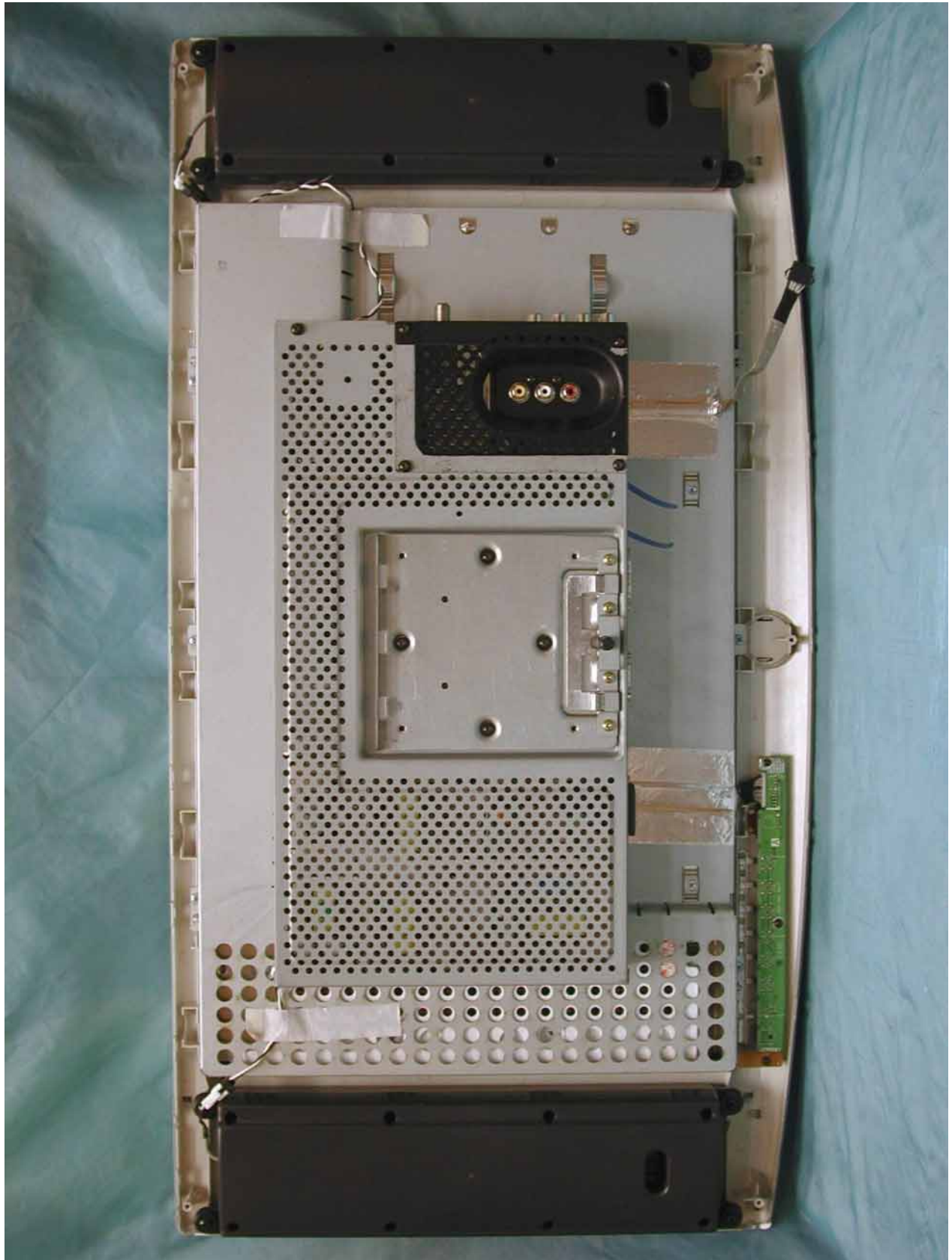


Assembly w/o Back Cover



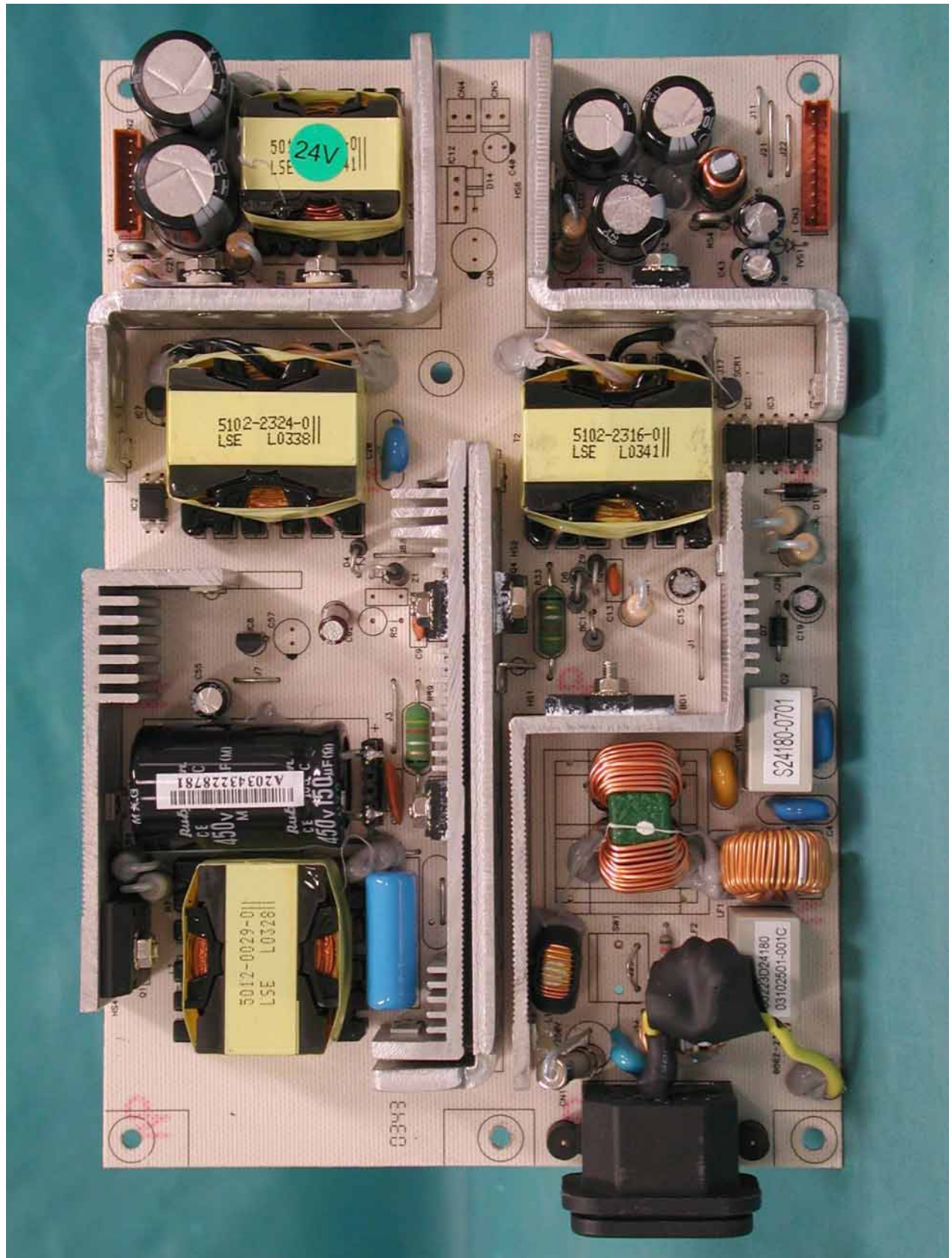
Shielding Cover



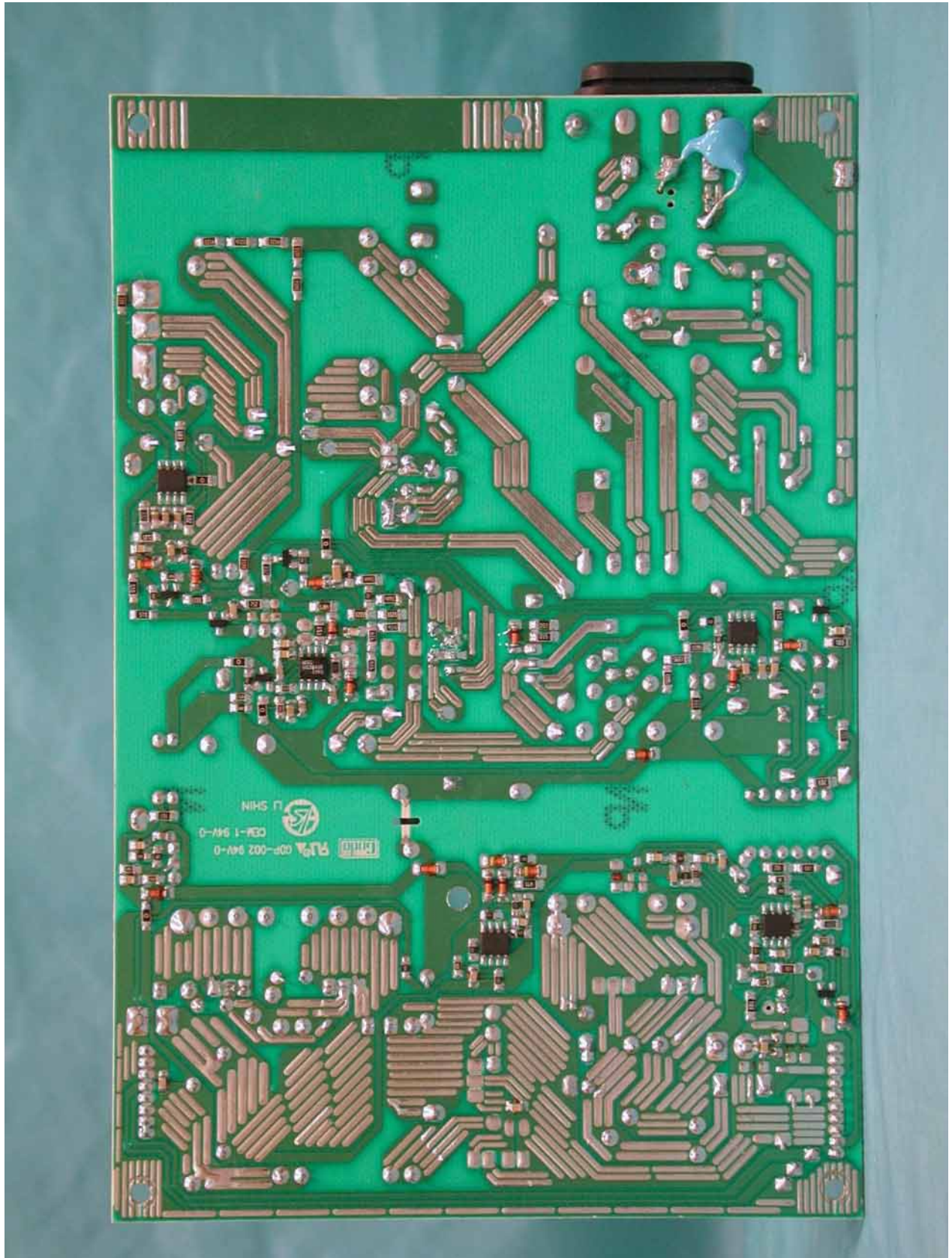
Assembly w/o Shielding Cover



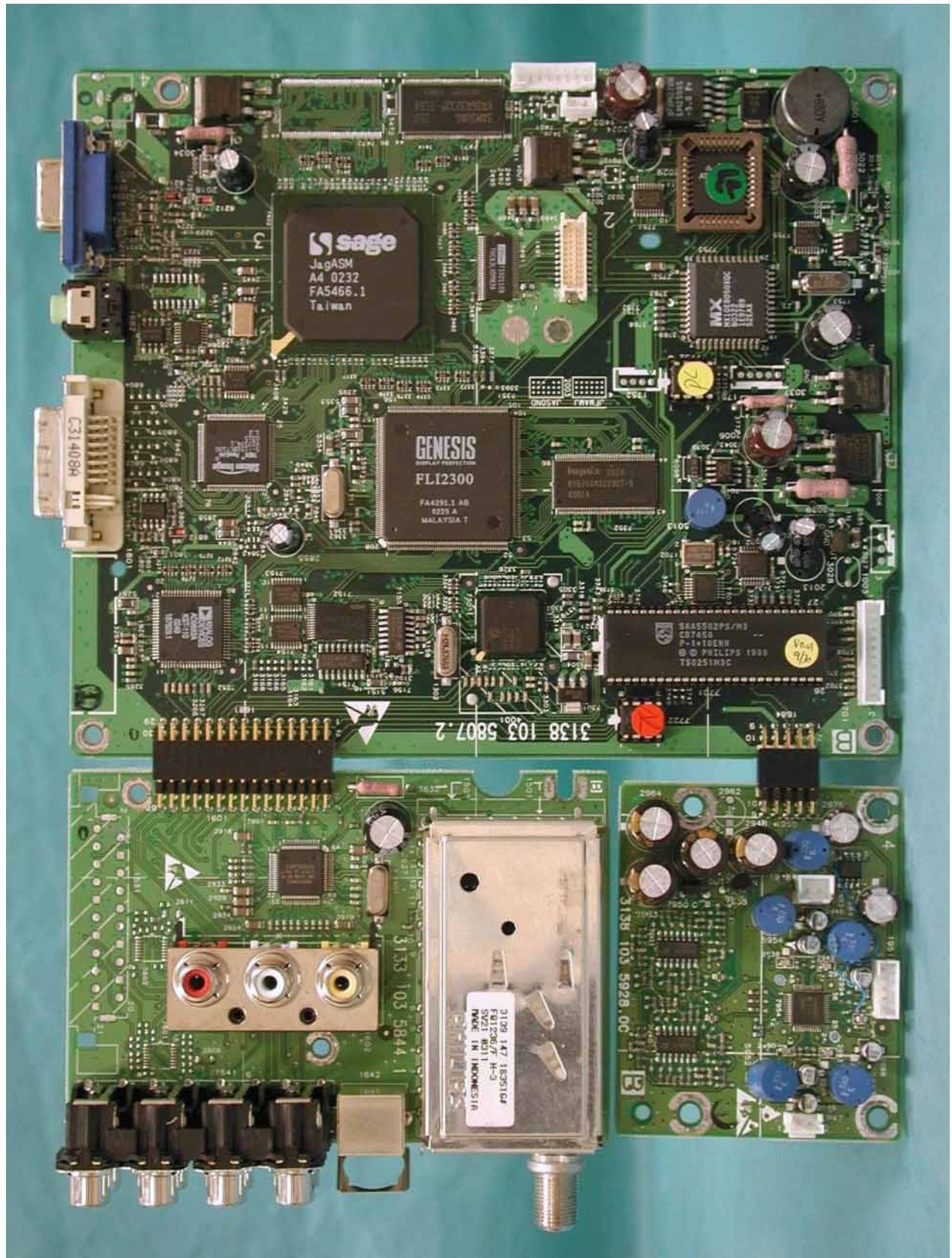
PCB Layout



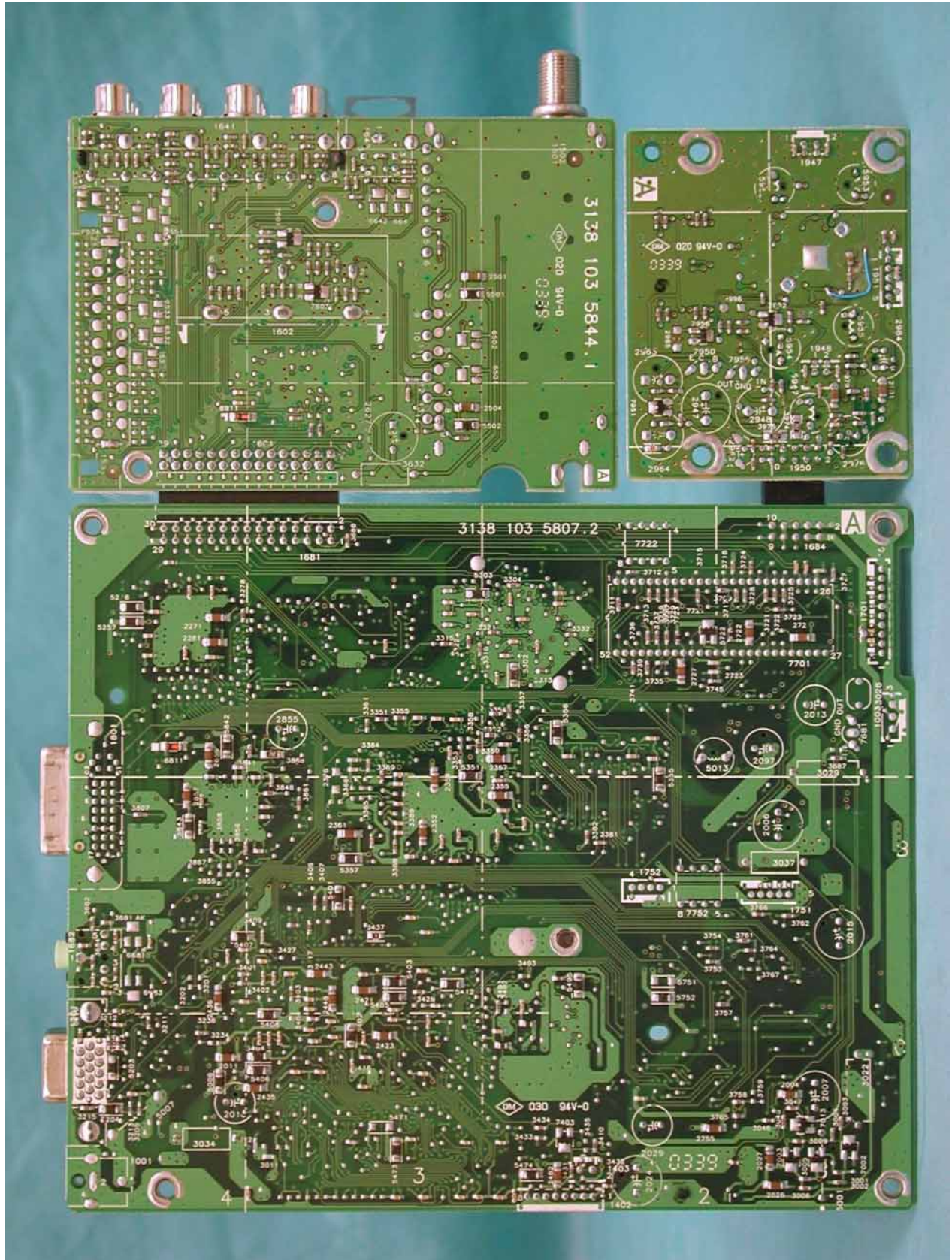
PCB Layout



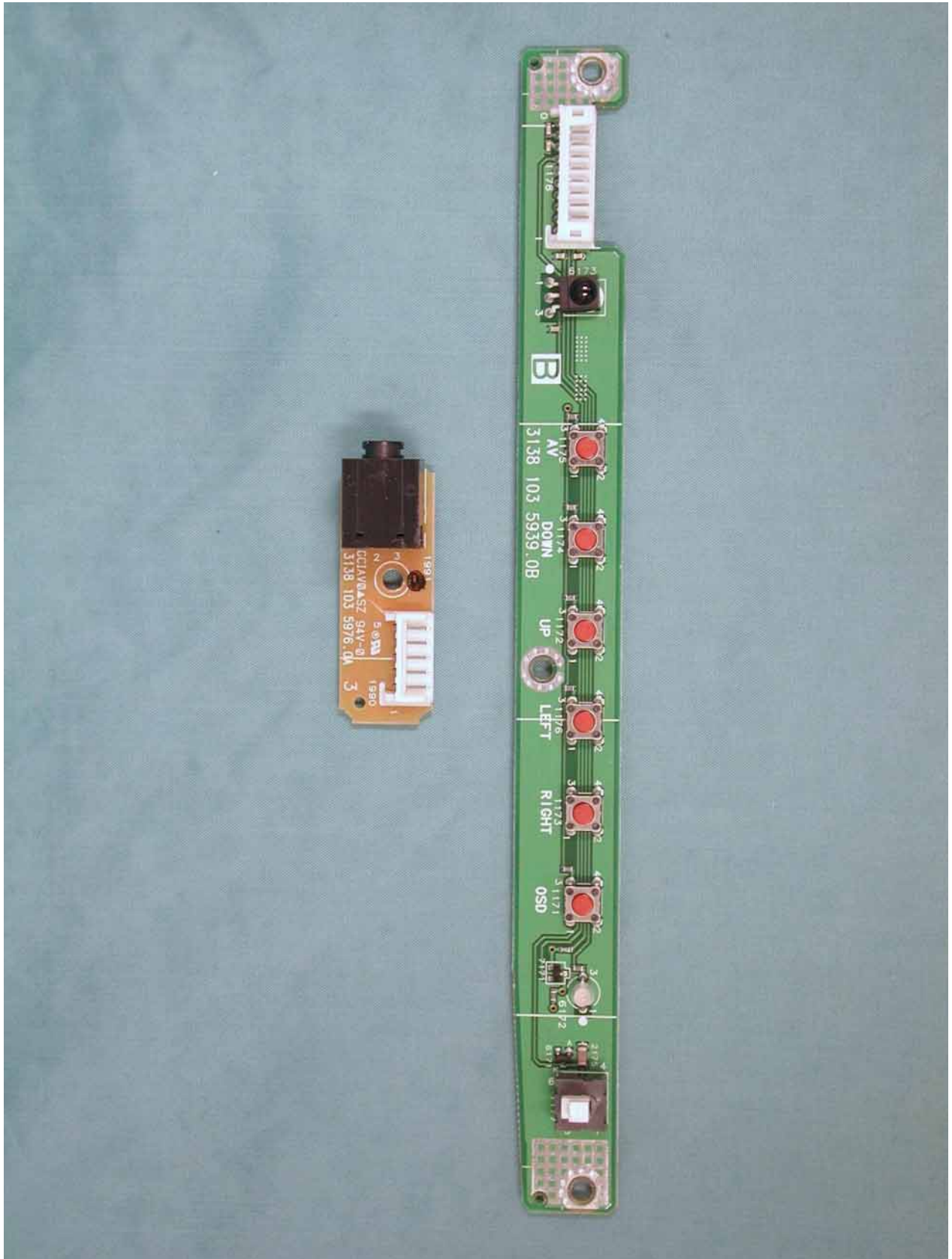
PCB Layout



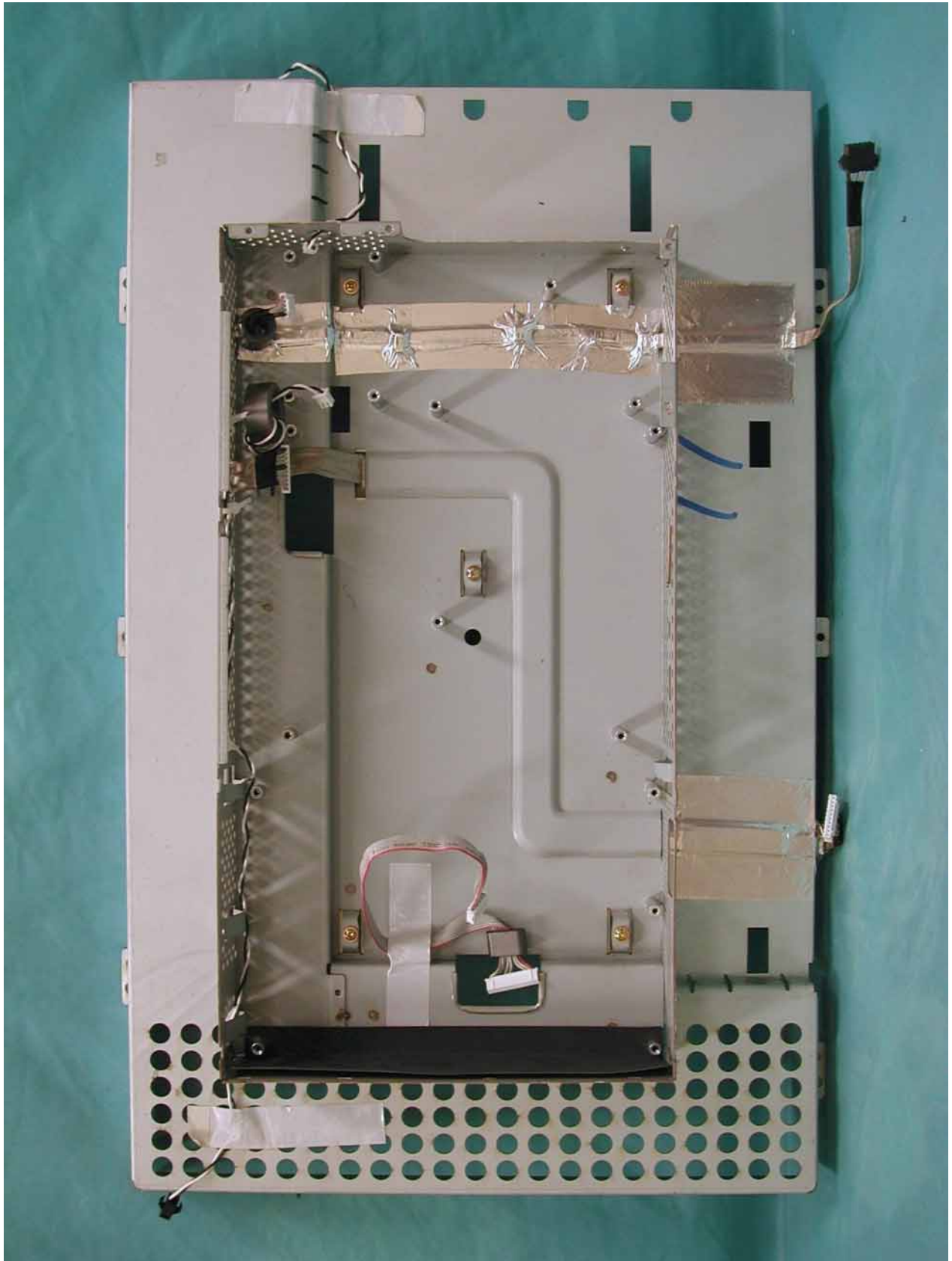
PCB Layout



PCB Layout



Plate



The image shows the back of a silver laptop chassis. At the bottom, there is a white plastic keyboard cover with a grid of circular ventilation holes. Above this, the main body of the chassis is silver metal. A hinge mechanism is visible on the left side. Several screws and mounting points are distributed across the surface. Two white labels with barcodes are attached to the top right. A small red 'CAUTION' sticker is located near the bottom right corner. The entire unit is placed on a green textured surface.

Power Cord and I/F Cables

