

System Performance Check-2450MHz

Communication System: UID 0, CW (0); Communication System Band: D2450 (2450.0 MHz);

Frequency: 2450 MHz;

Medium parameters used: $f = 2450$ MHz; $\sigma = 1.84$ S/m; $\epsilon_r = 40.89$; $\rho = 1000$ kg/m³

Phantom section: Flat Section

DASY Configuration:

- Probe: EX3DV4 - SN7383; ConvF(7.75, 7.75, 7.75); Calibrated: 2020/11/30;
- Sensor-Surface: 1.4mm (Mechanical Surface Detection), $z = -9.0, 31.0$
- Electronics: DAE3 Sn427; Calibrated: 2021/4/9
- Phantom: ELI v5.0; Type: QDOVA002AA; Serial: 1235
- DASY52 52.8.8(1222); SEMCAD X 14.6.10(7331)

Configuration/Body/Area Scan (6x8x1): Measurement grid: $dx=12$ mm, $dy=12$ mm

Maximum value of SAR (measured) = 7.33 W/kg

Configuration/Body/Zoom Scan (5x5x5mm, graded), dist=1.4mm (7x7x5)/Cube 0:

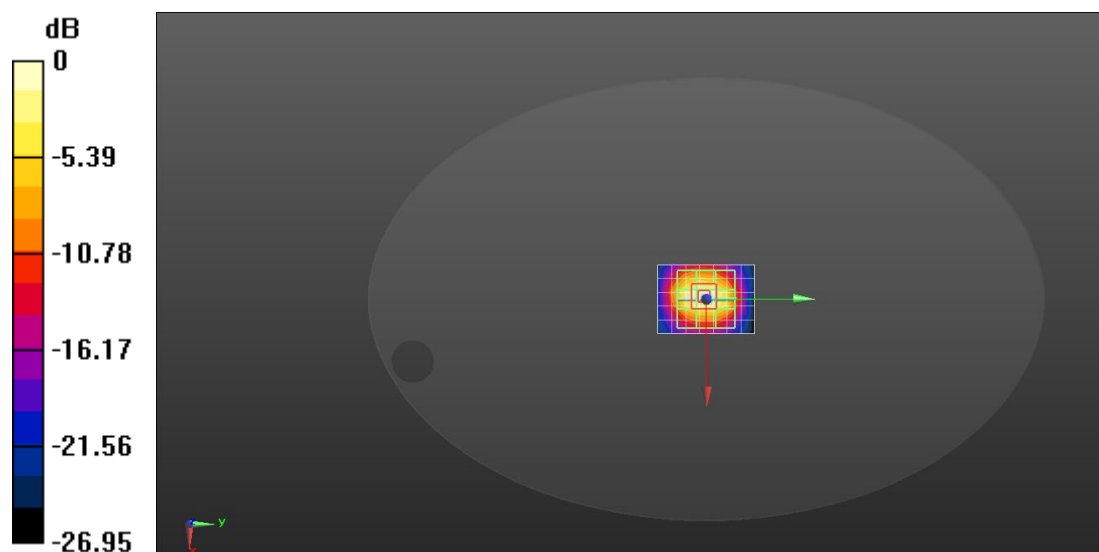
Measurement grid: $dx=5$ mm, $dy=5$ mm, $dz=5$ mm

Reference Value = 58.69 V/m; Power Drift = 0.03 dB

Peak SAR (extrapolated) = 10.5 W/kg

SAR(1 g) = 5 W/kg; SAR(10 g) = 2.35 W/kg

Maximum value of SAR (measured) = 8.39 W/kg



0 dB = 7.33 W/kg = 8.65 dBW/kg

System Performance Check-2450MHz

Communication System: UID 0, CW (0); Communication System Band: D2450 (2450.0 MHz);

Frequency: 2450 MHz;

Medium parameters used: $f = 2450$ MHz; $\sigma = 1.82$ S/m; $\epsilon_r = 40.42$; $\rho = 1000$ kg/m³

Phantom section: Flat Section

DASY Configuration:

- Probe: EX3DV4 - SN7383; ConvF(7.75, 7.75, 7.75); Calibrated: 2020/11/30;
- Sensor-Surface: 1.4mm (Mechanical Surface Detection), $z = -9.0, 31.0$
- Electronics: DAE3 Sn427; Calibrated: 2021/4/9
- Phantom: ELI v5.0; Type: QDOVA002AA; Serial: 1235
- DASY52 52.8.8(1222); SEMCAD X 14.6.10(7331)

Configuration/Body/Area Scan (6x8x1): Measurement grid: $dx=12$ mm, $dy=12$ mm

Maximum value of SAR (measured) = 7.10 W/kg

Configuration/Body/Zoom Scan (5x5x5mm, graded), dist=1.4mm (7x7x5)/Cube 0:

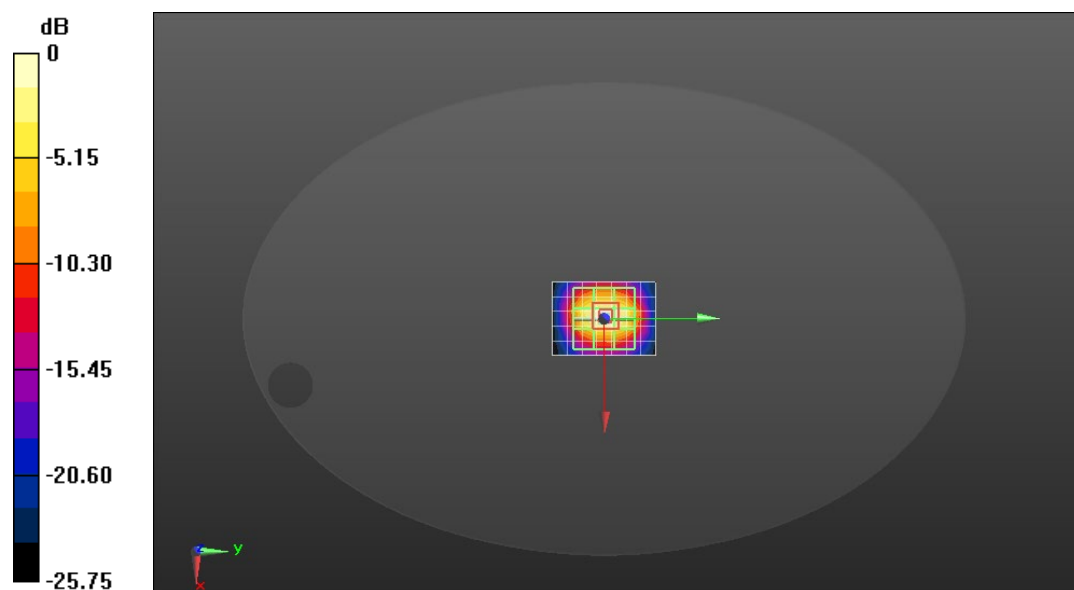
Measurement grid: $dx=5$ mm, $dy=5$ mm, $dz=5$ mm

Reference Value = 59.41 V/m; Power Drift = -0.09 dB

Peak SAR (extrapolated) = 10.5 W/kg

SAR(1 g) = 4.98 W/kg; SAR(10 g) = 2.33 W/kg

Maximum value of SAR (measured) = 8.44 W/kg



0 dB = 7.10 W/kg = 8.51 dBW/kg