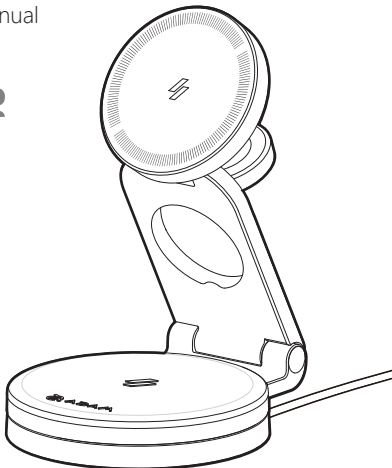


# Mag 360

Qi2 3-in-1 Foldable Travel Charging Station

ENGLISH

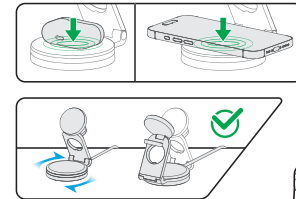
User Manual



## Specification

- Qi2 3-in-1 Foldable Travel Charging Station  
Model Name: Mag 360  
Input | USB-C Female: 5V=3A / 9V=3A / 12V=3A / 15V=3A  
Output | Qi2 Charger: 5V/5W, 12V/15W  
Wireless Charging Base: 5V/5W, 9V/10W, 9V/15W  
Apple Watch Charger: 5V/2.5W  
Size: 101 x 87 x 34.8 mm (folded)  
Weight: 336 g  
3-Year Limited Warranty  
Made in China

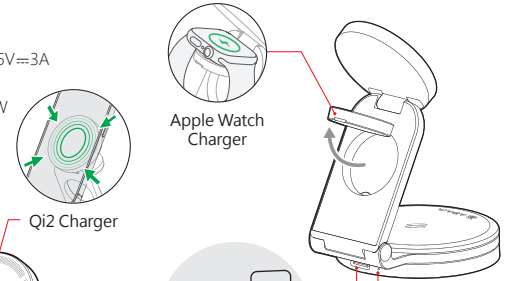
### 360° Magnetic Charging Base



\*The 360° rotating base allows easy viewing angle adjustment without the cable or outlet limitations.

**Caution:**  
To avoid any damage to wireless charger, please check the output voltage of the power source is suitable for the charger.

## Product Introduction



Apple Watch Charger

Qi2 Charger

Light Indicator

### USB-C Port

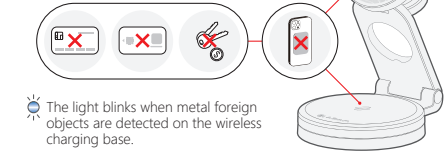
- \*A PD 30W charger or above is required to charge a smartphone, AirPods, and an Apple Watch simultaneously.
- \*A PD 45W charger or above is required to charge two smartphones and an Apple Watch simultaneously.

## Light Mode

- Plug in the Power Supply
  - Blue light turns on for 3's then turns off
- Standby
  - No signal
- Device Charging / Full
  - White light turns on (charging base only)
- FOD (Foreign Object Detection)
  - Blue light flashes (charging base only)

## Attention

**Caution 1:**  
Please avoid placing any credit cards, smart cards or metal objects on the charging area to prevent damage or demagnetization.



The light blinks when metal foreign objects are detected on the wireless charging base.

**Caution 2:**  
In order to achieve the best charging efficiency and heat dissipation effect, please use it in a Z-shaped stand when charging.



## Protective Function

- Multiple Circuit Protection
- Over-Voltage Protection
- Over-Heat Protection
- Over-Current Protection
- Short-Circuit Protection
- Flame Retardant Protection

## FCC Statement :

This device complies with Part 15 of the FCC Rules. Operation is subject to the following two conditions:  
(1) This device may not cause harmful interference, and (2) this device must accept any interference received, including interference that may cause undesired operation.

Warning: Changes or modifications not expressly approved by the party responsible for compliance could void the user's authority to operate the equipment.

Note: This equipment has been tested and found to comply with the limits for a Class B digital device, pursuant to Part 15 of the FCC Rules. These limits are designed to provide reasonable protection against harmful interference in a residential installation.

This equipment generates, uses, and can radiate radio frequency energy and, if not installed and used in accordance with the instructions, may cause harmful interference to radio communications. However, there is no guarantee that interference will not occur in a particular installation. If this equipment does cause harmful interference to radio or television reception, which can be determined by turning the equipment off and on, the user is encouraged to try to correct the interference by one or more of the following measures:

- (1) Reorient or relocate the receiving antenna.
- (2) Increase the separation between the equipment and receiver.
- (3) Connect the equipment into an outlet on a circuit different from that to which the receiver is connected.
- (4) Consult the dealer or an experienced radio / TV technician for help.

## FCC Radiation Exposure Statement:

This equipment complies with FCC radiation exposure limits set forth for an uncontrolled environment. This equipment should be installed and operated with minimum distance 20cm between the radiator & your body.



ADAM elements International Co., Ltd.  
www.adamelements.com  
support@adamelements.com  
+886-2-2738-9900

FCC ID: 2ABY9MAG-360    CCAB24LP1450T2

