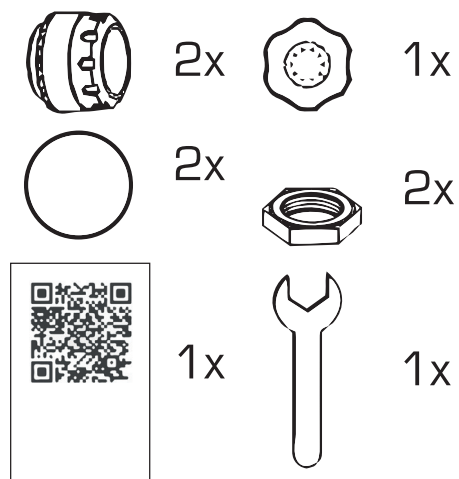


PRODUCT MANUAL

RV Tire Pressure Monitor

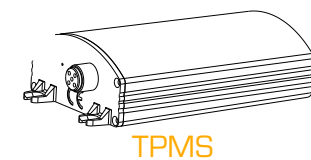
BMPRO TPMS

Including

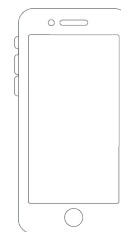


Needed

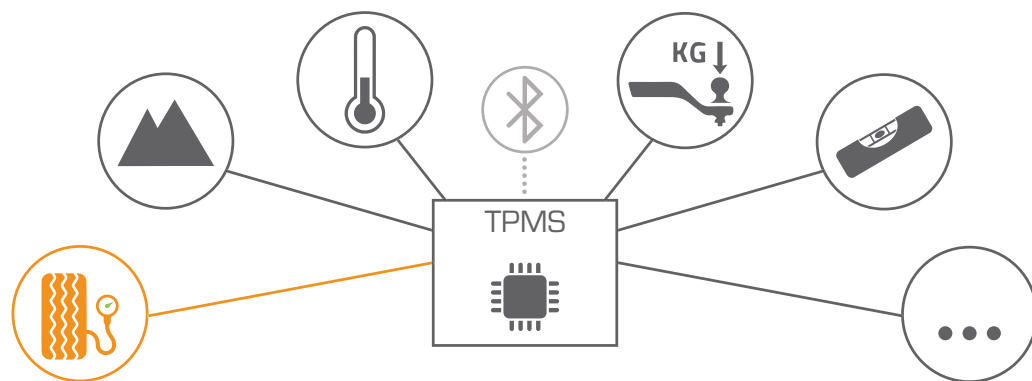
1.



Web link



Congratulations on the purchase of your TPMS! You need this to get up and running.



BMPRO - AUSTRALIA

19 Henderson Rd, Knoxfield
VIC 3180

BMPRO - USA

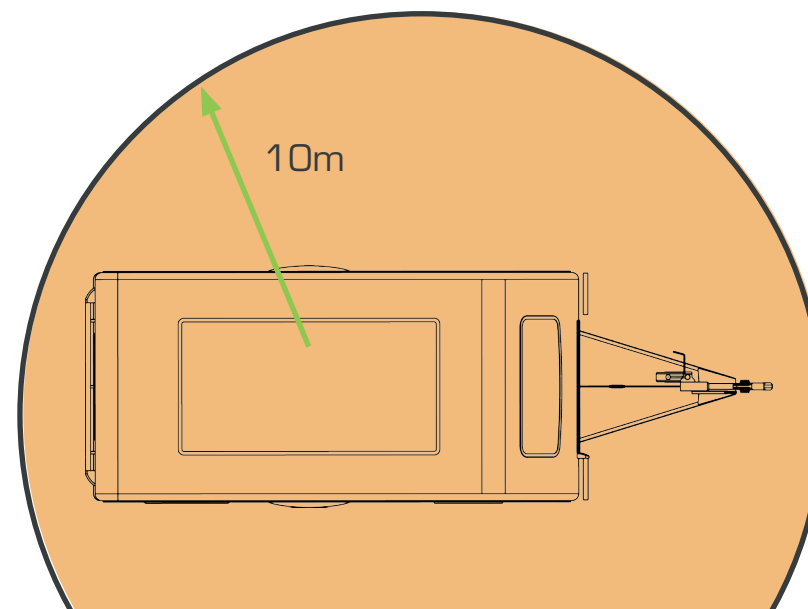
821 E. Windsor Ave, Unit 1
Elkhart, IN 46514

www.teambmpro.com.au

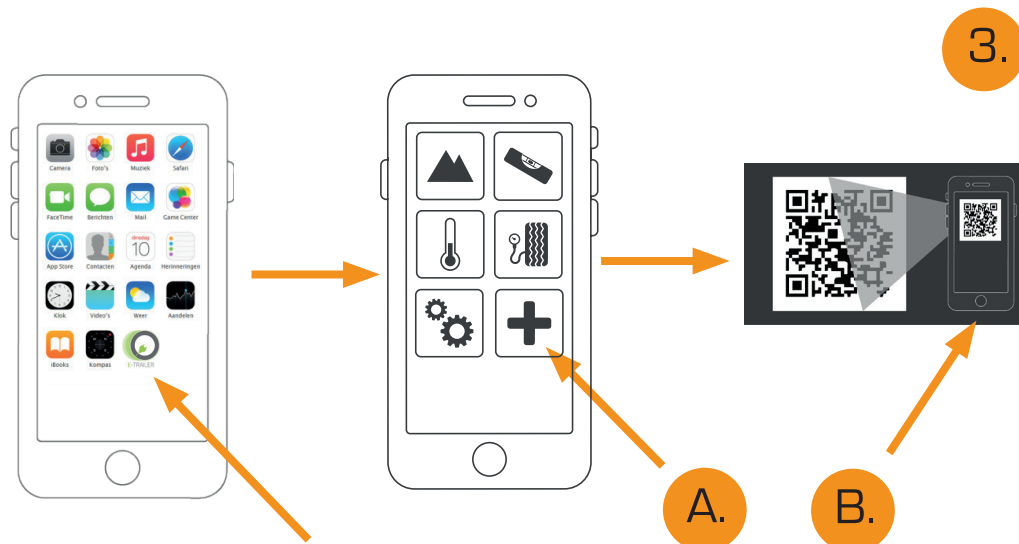
Voltage	3V
Type of battery	CR 1632
Duration of battery	2 year
Weight	10 gram
Maximum pressure	8 bar



2.



Before you start, ensure your smartphone is within range of TPMS



Press **+** in the main menu of the app (A), scan the unique QR Code (B) and follow the instructions in the app
N.B. Internet connection is required



Screw anti-theft nut

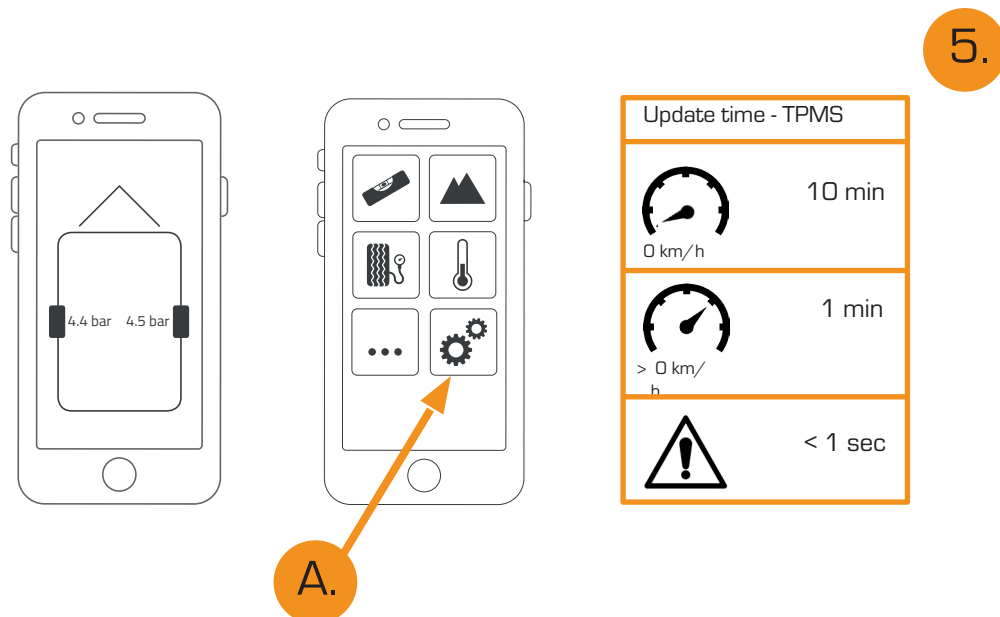
Tighten sensor


Screw anti-theft nut
anticlockwise to fix sensor

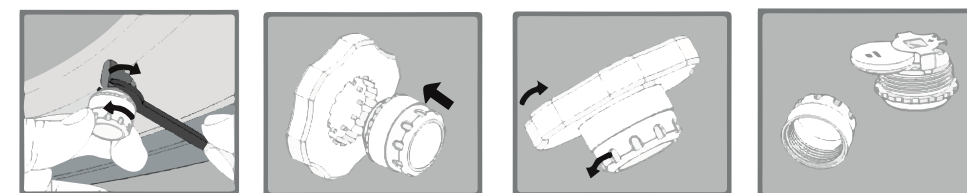
Tighten anti-theft nut
with the wrench



Please note: Only turn the E-pressure valve cap on the tyre when the app asks you to do so!



Go to Settings  in the app and set (A), for example, your ideal tyre pressure.



Remove sensor

Place sensor into
special wrench

Open sensor

Replace CR1632 battery

Replace the battery only with type CR1632.

FCC ID: 2ASJH-TPMS
IC : 24777-TPMS
CAN ICES-3 B / NMB-3B
HVIN: TPMS

This device complies with part 15 of the FCC Rules and with Innovation, Science and Economic Development Canada's license-exempt RSS standards.
Operation is subject to the following two conditions:

(1) This device may not cause harmful interference, and
(2) this device must accept any interference received, including interference that may cause undesired operation.

L'émetteur/récepteur exempt de licence contenu dans le présent appareil est conforme aux CNR d'Innovation, Sciences et Développement économique Canada applicables aux appareils radio exempts de licence.

L'exploitation est autorisée aux deux conditions suivantes :

(1) L'appareil ne doit pas produire de brouillage;
(2) L'appareil doit accepter tout brouillage radioélectrique subi, même si le brouillage est susceptible d'en compromettre le fonctionnement.

7.

This equipment has been tested and found to comply with the limits for a Class B digital device, pursuant to part 15 of the FCC Rules. These limits are designed to provide reasonable protection against harmful interference in a residential installation. This equipment generates, uses and can radiate radio frequency energy and, if not installed and used in accordance with the instructions, may cause harmful interference to radio communications. However, there is no guarantee that interference will not occur in a particular installation. If this equipment does cause harmful interference to radio or television reception, which can be determined by turning the equipment off and on, the user is encouraged to try to correct the interference by one or more of the following measures:

- Reorient or relocate the receiving antenna.
- Increase the separation between the equipment and receiver.
- Connect the equipment into an outlet on a circuit different from that to which the receiver is connected.
- Consult the dealer or an experienced radio/TV technician for help.

Any changes or modifications to this unit not expressly approved by the party responsible for compliance could void the user's authority to operate the equipment.

RF exposure statement

This equipment complies with the FCC RF radiation exposure limits set forth for an uncontrolled environment. This equipment should be installed and operated with a minimum distance of 20cm between the radiator and any part of your body.

This equipment meets the exemption from the routine evaluation limits in section 2.5 of RSS-102. It should be installed and operated with a minimum distance of 20cm between the radiator and any part of your body.

8.