

DLO | TransPod[®] for iPod shuffle

Quick Start	4
Using Your DLO TransPod for iPod shuffle	6
About FM Transmitters and the TransPod for iPod shuffle	6
Setting Up Your TransPod for iPod shuffle	6
Finding Empty Radio Frequencies	7
Tuning Your TransPod for iPod shuffle	8
Setting Preset Stations on your TransPod for iPod shuffle	8
Getting the Best Sound Quality with Your TransPod for iPod shuffle	9
Using the TransPod for iPod shuffle with a Cassette Adapter or Direct Input	10
Using Other MP3 Players or Devices with the TransPod for iPod shuffle	10
Tips and Troubleshooting	11
Tech Specs	14
Optional Accessories	15
Service and Support	16

Thanks for buying the DLO TransPod for iPod shuffle. We'll get you up and running in 4 easy steps. For more detailed instructions, check out [Using Your DLO TransPod for iPod shuffle](#) [pg 6].

1. Tune your car's FM radio to 88.5.

This is the default broadcast frequency for the TransPod. If 88.5 is not an empty frequency in your area (i.e. there is music or talk already on that station), please see [Finding an Empty Frequency](#) [pg 7].

2. Plug your DLO TransPod for iPod shuffle into your auto's power outlet.

This is the cigarette outlet or the 12v power outlet in any automobile.

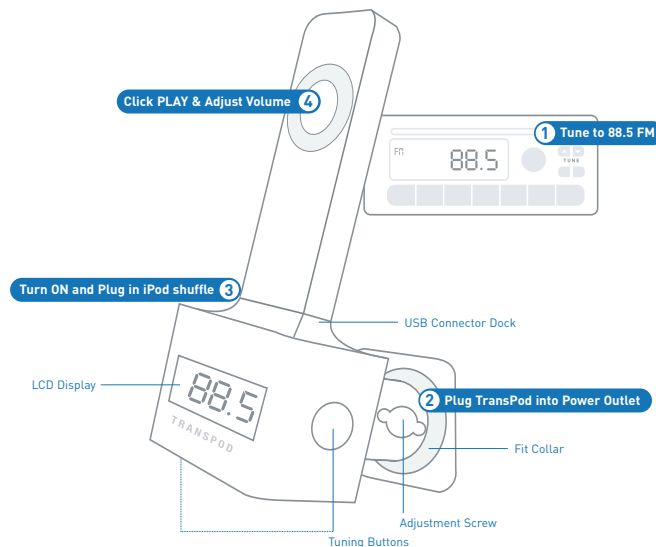
3. Turn on your iPod shuffle and plug it into the DLO TransPod for iPod shuffle.

The shuffle will fit securely into the USB port on the top of the TransPod for iPod shuffle. For more installation and iPod shuffle positioning options check out [Optional Accessories](#) [pg 15].

4. Click play and carefully adjust the volume on your iPod shuffle.

IMPORTANT: The TransPod for iPod shuffle is very sensitive to the volume setting on your iPod shuffle. Adjust the iPod shuffle volume up or down until the sound is clear without distortion, then leave it alone.

You should then use your car stereo's volume to control your music's overall volume. For more info on optimizing the sound quality of the DLO TransPod for iPod shuffle, please read [Getting the Best Sounds Quality with your TransPod for iPod shuffle](#) [pg 9].



About the TransPod for iPod shuffle FM Transmitter

The TransPod for iPod shuffle is basically a mini radio station that broadcasts your iPod's music to the FM radio in your car. It also charges the battery in your shuffle while positioning it for easy access in your car. The TransPod for iPod shuffle has two tuning buttons on either side so you can tune to any frequency from 87.9 to 107.9. It comes with four preset stations, so you can set it to the frequencies you use most.

Setting up your DLO TransPod for iPod shuffle

1. Turn on your car stereo and set it to FM radio mode.
2. Plug your TransPod for iPod shuffle into your car's cigarette lighter or 12v power outlet and slip the fit collar onto the autocharger. Adjust the fit collar if necessary.
3. If you want to change the angle of your TransPod for iPod shuffle, loosen the adjustment screw and tilt the TransPod for iPod shuffle to the best position for easy viewing and access.
NOTE: It may help to remove the TransPod for iPod shuffle when you do this. Pull it out, adjust and plug back in.
4. Find an FM frequency with no signal or radio station. For more help with this, read the [Finding Empty Radio Frequencies](#) [pg 7].
5. Match the FM frequency with the empty FM station on your stereo, using the tuning buttons on the TransPod for iPod shuffle (right button-up, left button down). You should hear most of the static go away when you do this. Now your radio has found the TransPod for iPod shuffle's signal.

6. Slide the switch on the back of your iPod shuffle to **ON** and plug it into the TransPod for iPod shuffle's USB connector dock.

NOTE: You can turn the shuffle on after you plug it into the TransPod - it is just easier to access the **ON/OFF** switch before.

7. Hit play on your iPod shuffle and adjust your iPod's volume until the sound is as clear as possible without being distorted. This volume level is very important to the overall sound quality of the TransPod for iPod shuffle and may change with different types of music.

NOTE: The iPod shuffle's volume setting is not memorized - it changes each time you turn the shuffle on and off - so you may adjust the shuffle's volume each time you listen in the car with the TransPod for iPod shuffle. For more information on volume settings, read the [Getting the Best Sound Quality with your DLO TransPod for iPod shuffle](#) [pg 9] section.

8. To control the overall volume of your music while using the TransPod for iPod shuffle, use the [car stereo's volume control](#), not the iPod shuffle's.

Finding Empty Radio Frequencies

If you live in a big city with a lot of FM radio stations, finding an "empty" FM frequency can be tricky. Here are some tips for finding an empty station:

- Be sure to search the entire spectrum of FM frequencies, from 87.9 to 107.9. Don't just look to the low end of the dial. There are often empty FM stations in the 100's that will work great.
- When using scan on your car stereo, if your tuner stops on 101 and then jumps to 103, look in the 102 frequencies for empty stations.
- Try scanning to a strong station, then backing down two frequencies - for

example 103.5 to 103.1. You can often find empty frequencies this way. If that frequency is taken, try scanning to the next station and try again.

- Save a preset station on your radio when you find a frequency that works well in your area. Then set these presets on your TransPod for iPod shuffle for different driving areas (ie. CH01 for home, CH02 for your commute, etc). To learn how to set your presets on your TransPod for iPod shuffle read [Setting Preset Stations on your TransPod for iPod shuffle](#) [pg 8].

[Tuning Your DLO TransPod for iPod shuffle](#)

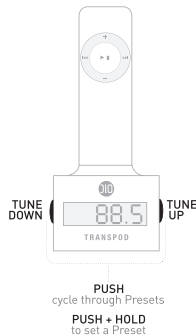
To tune your TransPod for iPod shuffle, use the tuning buttons on either side of the unit – right for tuning up, left for tuning down.

The DLO TransPod for iPod shuffle has 4 preset stations. The default frequencies for these presets are 87.9, 94.9, 100.9, and 107.9. To cycle through these presets, press both tuning buttons at the same time.

[Setting Preset Stations on your TransPod for iPod shuffle](#)

To set your own preset stations follow these simple steps:

1. Tune the TransPod for iPod shuffle to the station you'd like to set.
2. Press and hold both tuning buttons simultaneously for 3 seconds. The display on the TransPod for iPod shuffle will flash the preset channel you just set, e.g., CH01.
3. To add a second preset, cycle to another preset number by pressing the tuning buttons at the same time and repeat step 2. **NOTE:** Your new preset will override whatever preset was last saved on for that channel.



4. Repeat steps 1 and 2 for preset channels 3 and 4 (if available) to set all 4 TransPod for iPod shuffle presets.

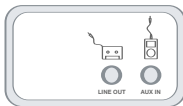
[Getting the best sound quality with your DLO TransPod for iPod shuffle](#)

- Make sure the frequency you've tuned to is empty and not near a strong station. A good place to start is channel 88.5, which is the default frequency on the TransPod for iPod shuffle and is often open.
- The TransPod for iPod shuffle will tune to any radio frequency, from 87.9 to 107.9, so try the entire spectrum until you find an unoccupied channel. To learn more see [Finding Empty Radio Frequencies](#) [pg 7].
- Recorded music has many different styles and levels. The volume on the shuffle may need to be adjusted for these different types of music to achieve the best sound quality possible.
- Once you've set the volume level on your shuffle for the best performance, use the car stereo's volume control to adjust the overall volume level of your music.
- The iPod shuffle's volume setting is not memorized - it changes each time you turn the shuffle on and off, so you may have to adjust the shuffle's volume each time you use the TransPod for iPod shuffle in your car.

Using the DLO TransPod for iPod shuffle with a Cassette Adapter or a Direct Input in Your Car

The TransPod for iPod shuffle can be connected to your car stereo with a cassette adapter or a mini plug cable for cars with auxiliary input jacks.

The output for these applications is located on the bottom of the TransPod for iPod shuffle. Just plug your cassette adapter or mini cable into the **LINE OUT** jack on the bottom of the TransPod for iPod shuffle and connect your cassette adapter or mini plug directly into your car stereo.



Using other MP3 Players or Devices with the DLO TransPod for iPod shuffle

The TransPod for iPod shuffle will even transmit the music from other devices like other iPods, MP3 players, portable DVDs, etc. It will even charge USB chargeable devices like cell phones (with the right USB cable). To do this, just plug your MP3 player, DVD player, laptop, CD player or other audio device into the TransPod for iPod shuffle using a standard male-to-male mini cable (not included). The TransPod for iPod shuffle will broadcast the device using its high-quality FM transmitter.

Just like when used with the iPod shuffle, the TransPod for iPod shuffle is very sensitive to the volume setting of the audio device. To get the best sound from your TransPod for iPod shuffle, you need to adjust the volume level of your device until there is no distortion, only clear sound. Then control the overall volume of your music with your car stereo's volume and not the device.

IMPORTANT: When using the TransPod for iPod shuffle with another device, be sure to remove the shuffle from the USB dock.

I can't find an empty FM frequency in my area.

Be sure to look in the 100's, not just left of the dial in the 80's or 90's.

Try scanning to a strong station, then back down two frequencies - for example 103.5 to 103.1. If that frequency is taken, try scanning to the next strong station and repeat. For more tips and helpful information read the **Finding Empty Radio Frequencies** section [pg 7].

My music is playing but there seems to be a lot of static in the sound.

First, check that you have a clear frequency. Unplug the TransPod for iPod shuffle to see if there might be a radio station interfering. If so, find another clearer station. Next, make sure your shuffle has just the right amount of volume going to the TransPod for iPod shuffle.

My radio will only scan to occupied FM stations.

Many car radios default to **SCAN** mode for tuning, so they automatically tune to a radio station. Most of these radios can be switched to manual tuning (consult your car or stereo manual on how to do this).

You can also "find" your TransPod for iPod shuffle by tuning to its selected frequency. Your scan function will most likely automatically find the TransPod for iPod shuffle.

My music sounds overdriven and distorted.

TransPod for iPod shuffle is very sensitive to the shuffle's volume input. Turn the volume up on your shuffle until it sounds clear with no distortion, but do not turn it up past this level. Use the car stereo's volume control to set the overall listening volume. Also, be sure that the FM station you're using is still unoccupied as you drive through different areas, FM signals can intrude on an unused frequency.

If I leave the DLO TransPod for iPod shuffle plugged into my car's power outlet, will it drain my car battery?

Probably not. But it's always a good idea to unplug anything when leaving your car for a long period of time.

Will the DLO TransPod for iPod shuffle charge my other USB devices like my cell phone?

Yes, it will. The TransPod for iPod shuffle will charge any USB chargeable device like MP3 players, cell phones, DVD players, laptops and others. Simply use the USB charger cable for your device and connect it to the TransPod. You can even still use the TransPod to broadcast music if you wish to the aux input on the bottom.

Can I use the DLO TransPod for iPod shuffle with other iPods or devices?

Yes. Just plug them into the TransPod for iPod shuffle's input jack on the bottom of the unit using a standard male-to-male mini plug. The TransPod for iPod shuffle will broadcast MP3 players, portable DVD players, laptops, CD players or any other audio device with a standard output jack.

Because of where my cigarette adapter is located, the iPod shuffle is hard to access when it's connected to the TransPod.

For power outlets that are located in out-of-the-way places, the DLO USB Docking Cable for TransPod is a great solution. It offers you a 48" USB cable so you can position the iPod shuffle anywhere you want. It even comes with a Velcro dashboard mount to secure the shuffle in a super-handly place for access to its controls while connected to the TransPod. For more information about the DLO TransPod Docking Cable for iPod shuffle, please see **Optional Accessories** [pg 15].

There's a knob or gearshift in the way of my shuffle when it's plugged into the TransPod, is there anything I can do?

When you have a gearshift, emergency brake or dashboard control knob hindering your iPod shuffle from fitting into the TransPod, you can use the DLO Flexible Dock for TransPod to get connected. The DLO Flexible Dock for TransPod is a 7 inch Gooseneck USB extension that allows you to bend and twist your iPod shuffle to any position while it's connected to the TransPod. For more info about the DLO Flexible Dock for TransPod, please see **Optional Accessories** [pg 15].

FM TRANSMITTER

Modulation: FM Stereo

RF Output Frequency Range: 87.9 - 107.9 MHz

Default Preset Frequencies (MHz): 87.9, 94.9, 100.9, and 107.9

Frequency Adjustment: 0.1 MHz per step

Frequency Response: 5Hz ~ 20KHz

Transmitter Power: 1.5 Watts

Transmitter Range: Up to 30 feet (9M)

POWER

USB Output: 200mA @ 5VDC (for charging external devices)

Input Voltage: 12 - 16 VDC

Input Current: <300mA @ DC12V~16V

CONNECTORS

Aux Input Jack: 3.5mm Stereo Mini jack

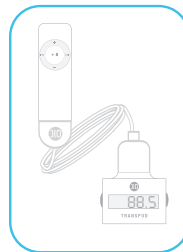
Direct Output: 3.5mm Stereo Mini jack

TEMPERATURE

Storage Temperature: -40° to 105° F (-40° to 40° C)

Operating Temperature: -10° to 70° F (-23° to 21° C)

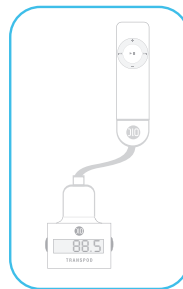
DLO provides you with great optional accessories to extend the reach and flexibility of your DLO TransPod for iPod shuffle. The DLO USB Docking Cable for TransPod and the DLO Flexible Dock for TransPod are both available for purchase at <http://www.dlodirect.com>.



DLO | USB Docking Cable for TransPod

4-FOOT USB DOCKING CABLE FOR IPOD SHUFFLE

- Connects the iPod shuffle to the DLO TransPod in cars with out-of-the-way power outlets
- Velcro dashboard mounting option positions the shuffle for easy control - right next to your steering wheel
- 48" USB docking cable reaches from your iPod shuffle to your TransPod in any car



DLO | Flexible Dock for TransPod

7-INCH GOOSENECK CABLE FOR IPOD SHUFFLE

- Adjusts the iPod shuffle to any position while connected to your TransPod
- Allows the shuffle to get around barriers like gearshifts, control knobs or emergency brakes
- Prominently displays your iPod shuffle for easy access

For even more information and tips, please visit our website at www.dlodirect.com and click **Support**.

Thanks for buying the
TransPod for iPod Shuffle.
Enjoy the ride.



FCC Caution

1. The device complies with Part 15 of the FCC rules. Operation is subject to the following two conditions:
 - (1) This device may not cause harmful interference.
 - (2) This device must accept any interference received, including interference that may cause undesired operation.
2. **Changes or modifications to this unit not expressly approved by the party responsible for compliance could void the user authority to operate the equipment.**