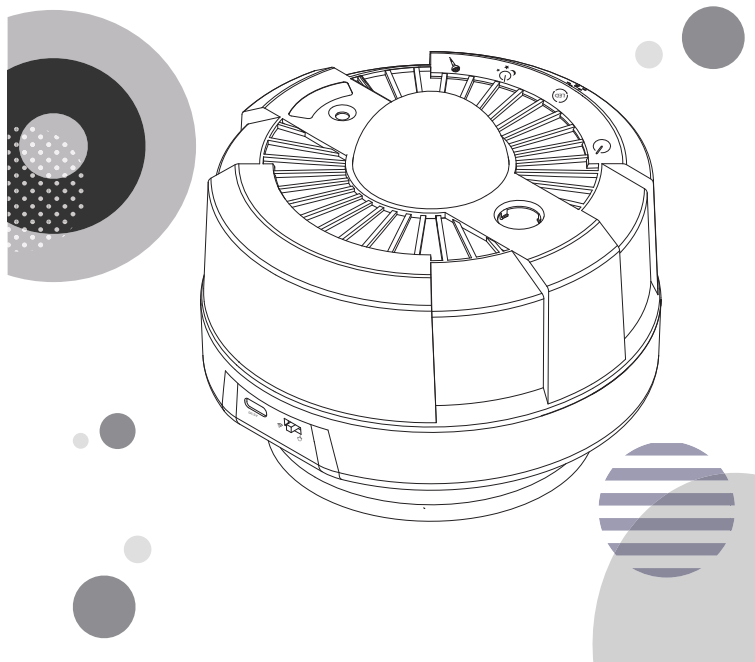
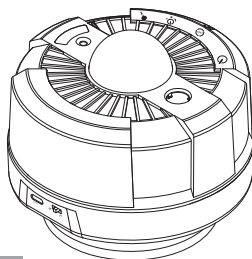


3-in-1 Sky Moon Light (Wi-Fi) User Manual





Important Notices

It's important to take safety precautions to reduce the risk of fire, electric shock or injury when using electrical devices.

These precautions include, but are not limited to:

Caution - Use only as directed.

Read all instructions before use.

For indoor use only. It is not waterproof, please avoid outdoor use in rainy days and damage caused by water.

If the appliance is damaged, please contact the dealer immediately for repair. Never attempt to assemble and disassemble the appliance in any way.

Do not disassemble the product by yourself. Otherwise, the company shall not be liable for any damage caused thereby.

With laser, moon and water ripple projection effects, this product projects beautiful lights on the ceiling or wall, including twinkling stars, fixed moon, and colorful water ripples.

Avoid direct eye exposure to the laser beam. Keep it away from the children.

For a better romantic and relaxed atmosphere, press the touch button with your thumb. Touch the button for more than 5 seconds and wait for 10 seconds before the next operation.

It only supports 2.4GHz Wi-Fi, not 5GHz.

Before Use

Open the package and check whether all necessary accessories are included. You will get:

Sky moon light USB cable Power adapter User manual

Product Features

1. Two control modes are available. (Slide to switch the mode):

a. Manual mode: You can switch different functions by touching the button. In this mode, the product will automatically shut down after running for 4 hours by default.

b. Wi-Fi mode: Function switch controlled by mobile APP or smart voice.

2. APP functions

a. Color module: You can switch the water ripple color, brightness level, color saturation;

b. Scenario module: It provides multiple scenarios. You can adjust brightness level, and select favorite water ripple color, static, flashing or breathing mode according to you needs.

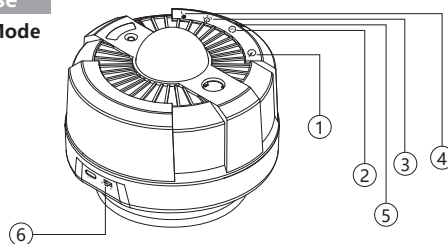
c. Timer module: Set up auto shutdown time.

3. Smart control: Use smart speakers, such as Amazon Echo, Google Assistant, to control the product - ON/OFF, color switch, brightness adjustment, etc.

4. Voice control mode: The light flashes according to the external sound or the change of music rhythm.

How to Use

1. Manual Mode



① First button: Main Switch

Circulate

Touch switch to Power On

- (1) The water ripple effect is on, and cycles through different color lights (the order is blue light - red light - green light - red blue - green blue - red green)
- (2) Laser: Breathing light effect
- (3) Moon: It will turn off automatically every four hours. Press the button again to turn it on.
Press again: Turn off the sky moon light

② Second button: Control ocean wave light (When product power on)

Circulate

Single press: Turn off the water ripple projection effect

Press again: Blue light

Press again: Red light

Press again: Green light

Press again: Red and blue lights

Press again: Green and blue lights

Press again: Red and green lights

Press again: It cycles through different color lights (the order is blue light - red light - green light - red blue - green blue - red green)

- ③ **Third button:** Control laser light and moon pattern (When product power on)

Circulate

The moon and laser projection effects are on simultaneously under the initial state.

Single press: Turn off the moon pattern and keep the laser light on

Press again: Turn off the laser light and keep the moon pattern on

Press again: Turn the laser light and moon pattern off

Press again: Turn the laser light and moon pattern on

- ④ **Forth button:** Voice control switch (In the power-on state, the voice control is turned off unless you press the button to enable this function)

Circulate

Single press: Turn on the voice control mode

Press again: Turn off the voice control mode

- ⑤ **Voice control mode:** When the voice control mode is enabled, the light is off. When there is a sound, the light flashes. (Tips: To achieve the best results, the sound must feature a strong sense of music rhythm, and the sound source must keep to the projection light within 1 meter)

- ⑥ **Two control modes :** a. manual mode; b. Wi-Fi mode (Slide to switch the mode)

2.Wi-Fi Mode

A. Wi-Fi mode setting: (1) Check if the Wi-Fi on your phone is enabled, otherwise, the product cannot connect to the phone; (2) Turn on the location information of the phone, otherwise, it cannot display the name of the Wi-Fi connected; (3) Connect the phone to a 2.4 GHz network. Other frequencies are not supported.

1. Download the APP: You can directly scan the following QR codes
(Note: The functions of the following APPs are the same. Take "Smart Life" as an example)



Smart Life



Tuya Smart

2. Search "Smart Life" through Google Play (for Android); Search "Smart Life" in APP Store (for iOS) and download the corresponding APP;

3. Sign up and log in to the APP

1) Run the "Smart Life" APP

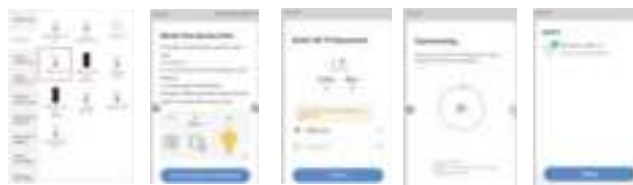
2) Log in with your username and password. For the first time use, you must sign up for a new account.

4. Configuration

1) Connect the product to the power supply, and it will turn on automatically, slide to Wi-Fi mode;

2) Connect to the Wi-Fi network: Turn on the product, and then turn it off / on 3 times according to the following steps: OFF - ON - OFF - ON - OFF - ON until the indicator light flashes quickly. Note: The switching interval should not exceed 10 seconds.

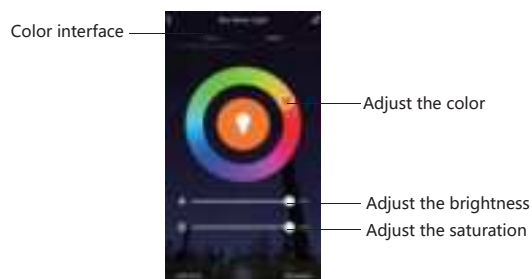
B. Open the "Smart Life" APP, tap "Add Device", select Lighting - Lighting (Wi-Fi) and enter the password (if applicable), and tap "Next" (Note: Connect the phone to the 2.4GHz network. 5GHz Wi-Fi network is not supported.)



C. Go on the configuration process. After connecting, it will pop up a message "Device added successfully," which means that the 3-in-1 Sky Moon Light has been connected.

APP Functions

1. Tap on the Sky Moon Light icon to enter the APP interface, and tap the "Power Switch" to turn on or off the light.
2. In the color interface, you can adjust the color, brightness and saturation.



3. Timer: Add schedule or set a timer for the light to turn on and off.



4. Scenario mode: It provides multiple scenarios. You can tap the color icon to select your favorite water ripple color, brightness and saturation. Besides, there are 3 color changing methods for you to choose from - static, jumping or breathing. In the jumping and breathing mode, you can customize the speed of color change.



Connect to Amazon Alexa:

- (1) Search "Smart Life" through Google Play (for Android); Search "Smart Life" in APP Store (for iOS) and download the corresponding APP;
- (2) Open the APP and create a new account or log in (if you have already signed up);
- (3) Open "Smart Life" and connect it;
- (4) You can rename the device by using the "Smart Life" APP. For example, if you rename the 3-in-1 Sky Moon Light to "Livingroom Light," Echo will get the same name after connecting the device in Step 9;
- (5) Download "Amazon Alexa" APP from Amazon Market, Google Play or iOS App Store, and connect Echo to "Alexa" APP;
- (6) Search "Smart Life" in the Alexa Skills;
- (7) Tap to open "Smart Life," and then enter your username, password and region on the link page;
- (8) Authorize Alexa to log in to the "Smart Life" account you have signed up, and say to Echo: "Alexa, search the device, please." After completion, Echo will say: "search completed;"
- (9) All settings are completed. Try talking to Echo and control your device with voice.

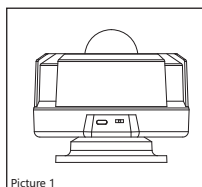
Here are the voice commands that Smart Life has:

Alexa, turn on Sky Moon Light
Alexa, turn off Sky Moon Light
Alexa, set Sky Moon Light to 20 percent
Alexa, brighten/increase Sky Moon Light
Alexa, dim/decrease Sky Moon Light
Alexa, set Sky Moon Light to green

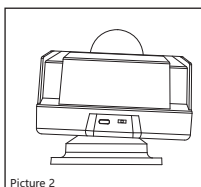
Troubleshooting Tips for Network Connection

1. Verify the Wi-Fi password by the following methods:
Open the list of wireless networks displayed on the phone, tap the Wi-Fi name to forget this network. Reconnect it and enter the password to see if the connection is successful. If not, please enter the correct Wi-Fi password.
2. The in-home Wi-Fi name cannot be displayed when connecting. Please check if the "location information" is enabled on the phone;
3. Check if the phone is connected to the 2.4GHz wireless network;
4. The Wi-Fi name should not contain Chinese, spaces and special characters;
5. The Wi-Fi password cannot be empty, with up to 58 characters. Do not use any special characters;
6. When connecting to Wi-Fi, keep the product as close to the router as possible. A distance of about 5 meters is recommended.

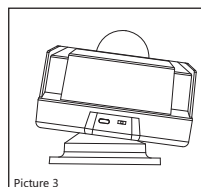
Direction and Placement



Picture 1



Picture 2



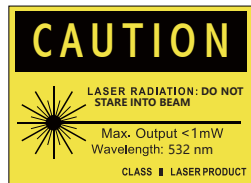
Picture 3

Specifications

Host Material	ABS
Input Rated Voltage	5VDC
Maximum Power	7.5W
Maximum Working Current	1.5A
Projection Light Source	LED light bead source
Projector Light Source Wavelength	Red light beads (620-625nm), green light beads (520-525nm), blue light beads (460-465nm), white light beads (color temperature 1500-15000k)
Projection Distance	2-10M/6.56-32.80ft
Projection Area	The projection area is 40 square meters at a distance of 5M and 60 square meters at a distance of 8M
Motor	Start voltage is 3 V , with 1-4 r/min
Input Power	100-240V AC 50/60HZ 1.5A (when used with a power supply transformer)
Operating Temperature	-20~50°C/-4~122°F
Storage Temperature	-20~60°C/-4~140°F
Product Model	SKE-YQ-Y07
Laser Level	Class 2 (Class II)
Laser Power	< 1mW
Use and Maintenance	Indoor use, maintenance-free

FOR SAFETY' S SAKE:

- **Not suitable for use in play by children**
- May not be suitable for people who have photo sensitive epilepsy
AVOID DIRECT EYE EXPOSURE
- [Class 2] LASER RADIATION - DO NOT STARE INTO BEAM - CLASS 2 LASER PRODUCT
- Do not damage the insulation of cable.
- Do not secure the wiring of the product with staples or nails
- Do not close doors or windows on the product as this may damage the wiring insulation.
- Do not lay the cable under carpet or where it can be damaged.
- Ensure that cables are fully unwound and sited where they will not become damaged or present a tripping hazard.
- Do not connect this product to the mains supply while it is in the packaging.
- Do not allow any plastic part to come into contact with heat or flame.
- Ensure table top transformers are positioned on flat, stable, heat resistant surfaces.
- Unplug the product when leaving the house, when retiring for the night or if left unattended
- Do not overload wall sockets. Use different sockets around the house to plug in multiple lights to balance the load.
- Please retain this information for future reference.



The light colour of this product is outside the limits as defined in ErP Regulations and therefore only suitable for decorative purposes.

Complies with safety requirements of IEC 60825-1: 2014

FCC Warning:

Any Changes or modifications not expressly approved by the party responsible for compliance could void the user's authority to operate the equipment.

Note: This equipment has been tested and found to comply with the limits for a Class B digital device, pursuant to part 15 of the FCC Rules. These limits are designed to provide reasonable protection against harmful interference in a residential installation. This equipment generates uses and can radiate radio frequency energy and, if not installed and used in accordance with the instructions, may cause harmful interference to radio communications. However, there is no guarantee that interference will not occur in a particular installation. If this equipment does cause harmful interference to radio or television reception, which can be determined by turning the equipment off and on, the user is encouraged to try to correct the interference by one or more of the following measures:

- Reorient or relocate the receiving antenna.
- Increase the separation between the equipment and receiver.
- Connect the equipment into an outlet on a circuit different from that to which the receiver is connected.
- Consult the dealer or an experienced radio/TV technician for help.

This device complies with part 15 of the FCC Rules. Operation is subject to the following two conditions: (1) This device may not cause harmful interference, and (2) this device must accept any interference received, including interference that may cause undesired operation.

"This equipment complies with RF radiation exposure limits set forth for an uncontrolled environment.

This equipment should be installed and operated with a minimum distance of 20 centimeters between the radiator and your body."