

HAN AP321 and AP321e  
Installation Guide

Summary of Installation Steps

- WLAN Planning. Usually, a comprehensive site survey is required before installation, such as installation location, brackets, cables, power source, etc.
- Unpack the AP box and check all contents
- Install the AP bracket on ceiling or wall
- Installing the AP
- Connecting required cables
- Power connection
- Verifying post-installation connectivity
- AP provisioning

Access points are radio transmission devices and are subject to governmental regulation. Network administrators who are responsible for the configuration and operation of access points must comply with local broadcast regulations. Specifically, access point must use channel assignments appropriate to the location where the access point will be deployed.

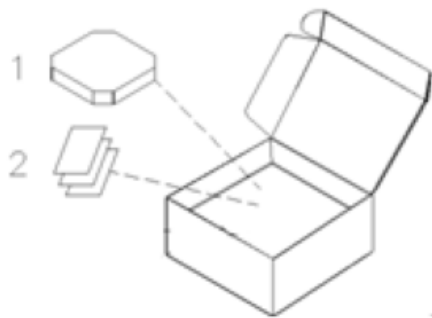
Package Contents

| Item | Name   | Qty | Unit |
|------|--|-----|------|
| 1    | Access Point                                 | 1   | Pcs  |
| 2    | Quick Start Guide                            | 1   | Pcs  |
|      | Installation Guide                           | 1   | Pcs  |
|      | Regulatory Compliance and Safety Information | 1   | Pcs  |
|      | User Guide Info Card                         | 1   | Pcs  |

◆ Optional Accessories (To be ordered separately)

| Item | Name         | Description   |
|------|--------------|---|
| 1    | OAW-AP-MNT-B | Indoor mounting kit, Type B1(9/16") and B2(15/16") for T shaped ceiling rail.                                     |
| 2    | OAW-AP-MNT-C | Indoor mounting kit, Type C1(Open Silhouette) and C2 (Flanged Interlude), for other shaped ceiling rail mounting. |
| 3    | OAW-AP-MNT-W | Indoor mounting kit, Type W wall and ceiling mounting with screws.  |

Figure1: Product Packing



Inform your HAN sales representative of incorrect, missing, or damaged parts. If possible, retain the carton, including the original packing materials. Use these materials to repack and return the unit to the supplier if needed. Additional mounting kits for use with the AP321 series access points are sold separately. Contact your ALE sales representative for details.

Hardware Overview

The following sections outline the hardware components of the AP321 and AP321e Series access point.

Figure 2: AP321 Front View

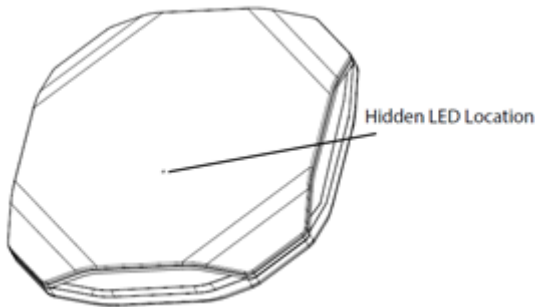


Figure 3: AP321e Front View

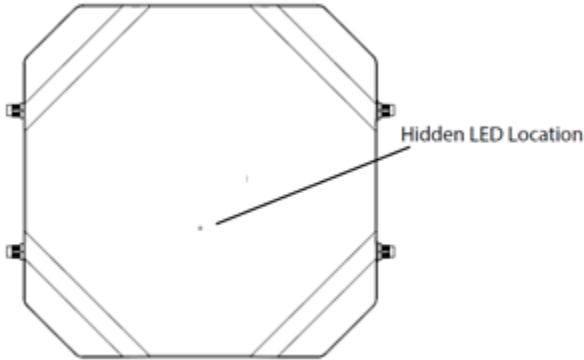


Figure 4: AP321e Include Antennas Front View

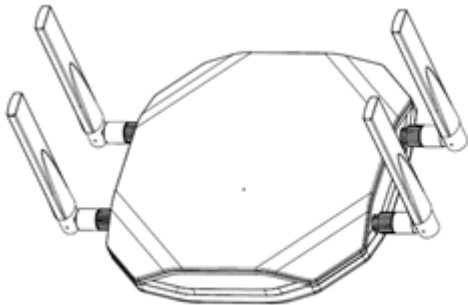
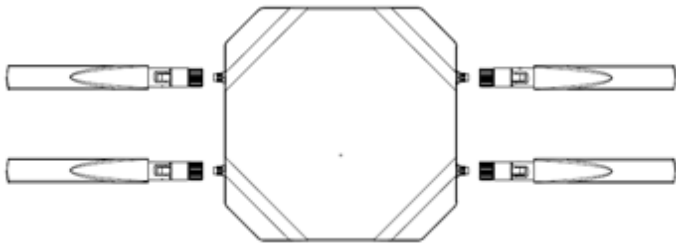


Figure 5: Install the external antenna on AP321e.

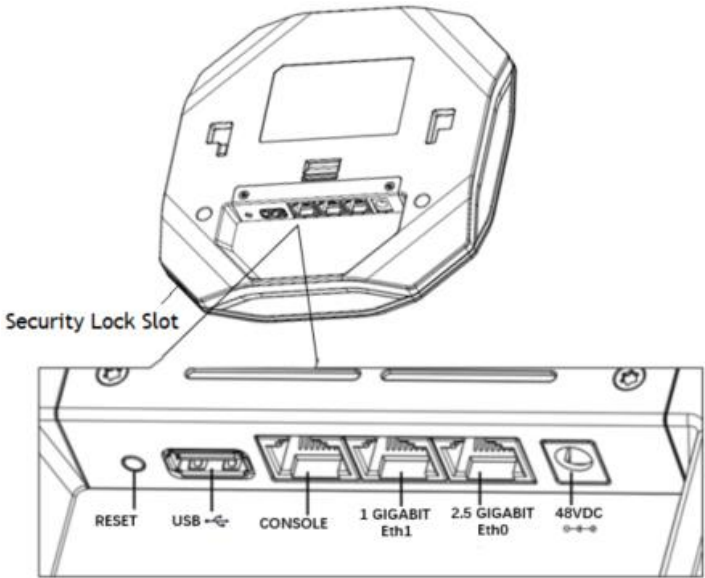


◆ The external antennas is sold separately.

LED

The AP321 and AP321e access point is equipped with hidden LED display that indicates different status with different color. For the details of the LED status, please refer to the Quick Start Guide.

Figure 6: AP321 and AP321e Back View



◆ AP321 and AP321e Connections

Table 1

External Interfaces

| Item Name          | Specifications  |
|--------------------|---|
| DC Power Socket    | The AP has a single 48V DC power jack socket to support powering through an AC-to-DC power adapter, If PoE is not available, an optional AC-DC adapter kit (sold separately) can be used to power the AP. |
| 2.5 Gigabit Eth0   | 1x 100/1000/2.5GBASE-T autosensing (RJ-45) port, Power over Eth0 (PoE)  |
| 1 Gigabit Eth1     | 1x 10/100/1000BASE-T autosensing (RJ-45) port, Power over Eth1 (PoE)  |
| Console            | The console port is an RJ-45 female connector and can be used to connect to a terminal for direct local management.<br><b>Note:</b> Currently for use by Service & Support only.                          |
| USB                | USB 2.0 host interface (Type A, output current 0.5A )   |
| Reset              | Factory reset. Press reset button for 5s, AP LEDs will quickly flashing for 3s, then AP will restart and restore factory configurations.  |
| Security Lock Slot | The AP is equipped with a security lock slot for additional security.   |

Table 2

Ethernet Port Pinout

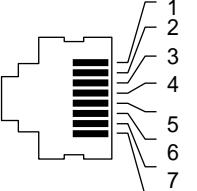
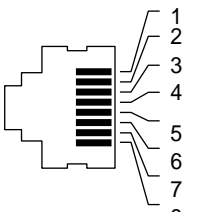
| Connector   | Pin | Signal Name | PoE  |
|---|-----|-------------|------|
|  | 1   | RJ45_DA+    | PoE- |
|   | 2   | RJ45_DA-    | PoE- |
|   | 3   | RJ45_DB+    | PoE+ |
|   | 4   | RJ45_DC+    | PoE+ |
|   | 5   | RJ45_DC-    | PoE+ |
|   | 6   | RJ45_DB-    | PoE+ |
|   | 7   | RJ45_DD+    | PoE- |
|   | 8   | RJ45_DD-    | PoE- |

Table 3

Console Port Pinout

| Connector  | Pin | Signal Name | Function |
|--|-----|-------------|----------|
|  | 3   | TXD         | Transmit |
|  | 4   | GND         | Ground   |
|  | 5   | GND         | Ground   |
|  | 6   | RXD         | Receive  |
|  | 7   |             |          |
|  | 8   |             |          |
| Pins not listed are not connected.   |     |             |          |

- ◇ Note: The serial console port allows you to connect the AP to a serial terminal or a laptop for direct local management. This port is an RJ-45 female connector with the pinouts described in Table 3. Currently for use by Service & Support only.

Power

The OAW-AP1320 series access point supports direct DC power adapter (48V DC nominal, sold separately) and Power over Ethernet (PoE). The DC power connector port is located on the back of the device, as shown in Figure 6. The PoE allows the Ethernet port to draw power from an IEEE 802.3at compliant source.

*OmniAccess Stella AP supports the power adapter provided by ALE ONLY.*

Before You Begin

Refer to the sections below before beginning the installation process.

Pre-installation Checklist

Before installing your OAW-AP1320 Stellar access point, be sure that you have the following items:

- 8-conductor, CAT5 or better UTP cable of required length.
- One of the following power sources:
  - IEEE 802.3at compliant Power over Ethernet (PoE) source (PoE switch or PoE injector), best with 2.5GbE PoE port.
  - AC-DC adapter (sold separately). output voltage DC 48V, output current ≥0.5A
- A terminal or a notebook

Identifying Specific Installation Locations

You can mount the OmniAccess Stellar AP on a ceiling rail or on a wall. You should first determine the location of the installation. The installation position is located at the center of the required coverage area and should be free from obstructions or obvious sources of interference.

- Minimize the number of obstructions (such as walls) between the AP and user terminals.
- Electronic equipment or devices (such as microwave ovens) which may produce radio frequency noise should be away from the installation position of the AP.

*It is strictly prohibited to install around stagnant water, water seepage, leakage or condensation. Avoid cable condensation or water seepage along the cables connecting to the AP.*

AP Installation

Refer to mounting kits installation Guide.

Verifying Post-Installation Connectivity

The LED on the AP can be used at this point to verify that the AP is receiving power and initializing successfully.