

# **WE009US GPS tracker User Manual**

## **WE009 User Manual**



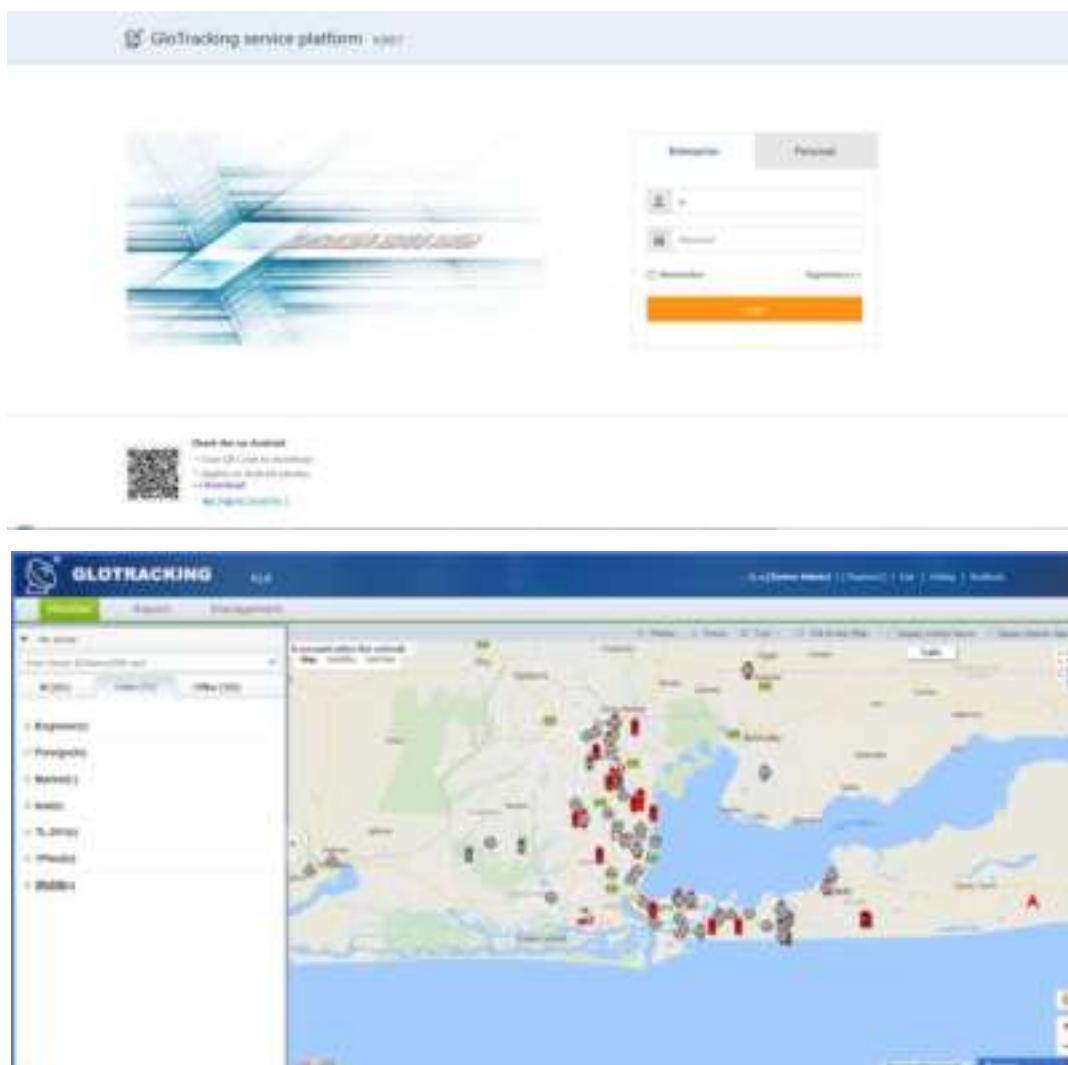


## Contents

1.	Introduction .....	1
2.	New Contents .....	2
3.	Main Features .....	2
4.	Applications .....	2
5.	Specification .....	3
6.	Start Operation .....	3
7.	Get location .....	5
8.	Continuous Auto-track function .....	5
9.	Low battery Alarm .....	5
10.	Set the local time .....	6
11.	GSM Setting .....	6
12.	Check tracker's parameters .....	6
13.	Displaying location on Google map .....	6
14.	GPS tracking platform .....	7
15.	Cautions.....	7
16.	commands lists .....	8

## 1. Introduction

The GPS tracking system is an integrated GPS/LTE /WIFI device that achieves real-time location tracking and anti - theft function. The positioning system can automatically obtain the longitude and latitude coordinate data of person, pet, vehicles and various information collected by the device. This data is transmitted to the monitoring platform through the built-in LTE M1&NB module and is compatible with various monitoring software. Users can positioning and monitor remote targets with a free Google earth map.





## 2. New Contents

- 2.1 Smaller size: As small as a car remote control. (82 x 35 x 22mm)
- 2.2 Longer battery life (standby time is more than 150h)
- 2.3 Position accuracy combines the GPS info and GSM base station info.

## 3. Main Features

Tracker	Software
Setting device by computer	Tracking on PC or Mobile
Real-time tracking	Based on Google map
Playback historical tracking	Support more than 10000 users
Intelligent save power mode	Easy to manage
SOS alert/Fall down/Geo-fence alarm	Online navigation
Speeding alarm/Low battery alarm	Real-time tracking function
Single position report	Set the continuous locating function
Platform operation Management	Playback historical tracking
Accept ODM and OEM	SOS alert
	Speeding alarm
	Geo-fence alarm
	Distance measurement

## 4. Applications

- ✓ Protect the Child/Elderly/Disabled/Pet
- ✓ Personal Management
- ✓ Car Rental/Car Team Management
- ✓ Tracking System for Express/Carriers/Logistics



## 5. Specification

Content	Specs
Support network	2G(GPRS/EGPRS),4G
Support Bands	Europe:B1/B3/B5/B8/B20 America:B2/B4/B12 2G:850/1900 Mhz
Dimensions	82 x 35 x 22mm
Weight	54.2 g
Waterproof Level	IP68
Colour	white/black
GPS Sensitivity	Cold start: -148dBm; Warm start: -163dBm; Hot start: -165dBm
GPS Accuracy	≤10m
GPS Start time	Cold start: 36s; warm start: 22s; hot start: 1s
Battery Capacity	1250 mAh ,3.8V
SIM card type	Nano SIM
Firmware Upgrade Mode	OTA/USB
Charging time	2-3Hours
Operating Temperature	-20°C to +65°C
Working Humidity	5% -- 95%

## 6. Start Operation

You must fully charge the battery before using the device for the first three times. Please charge 8-12 hours continuously when charging. The device will

be able to standby for more than 150 hours after full charge. The charging time of the battery in normal use is 3-4 hours.

Please note, the device should only be charged with chargers supplied by Toplovo. It is important that you keep your GPS tracker charged daily to ensure it is ready for use when you need it.

The following is the device structure diagram:



Tracker:

1 Indicator lights (green, red, white)

2 Switch button

3 magnet

4 Charging contact

5 Buzzer



Standing outside, and hold the device where it has a clear and unobstructed view of the sky. Switch the device on/off, press and hold the middle 'On/Off' button, it will show the red led, make a bip sound and short vibration.

## 7. Get location

Get instant position by sending command **“:123456F#”** to the unit. It will reply its position.

## 8. Continuous Auto-track function

Send **“:123456M0/M1, XXXS/M/H#”** to the unit, the tracker will reply the location information to the server according to the timer parameters. 'XXX' is interval time and must be three digits, 030S means 30S. 'S' is Second, 'M' is Minute, 'H' is Hour. 'H' should be  $\leq 90$ , 'S, M' should be  $< 255$

**E.g.** send **“123456M1,030S”** to the tracker means every 30 seconds it will send back a position coordinate to the number A5. Send **“123456M0,030S”** to the tracker means stop the continuous tracking.

## 9. Low battery Alarm

Send **“:123456N0/N1,battery#”** to tracer to set the Low-battery alert function.

N0 means turn off the Low-battery Alarm function

N1 means turn on the Low-battery Alarm function

**Note:** battery is the Low-battery percentage, It should be  $< 45$  and 2 digits.

**E.g.** Send **“123456N1,30”** to turn on low battery alarm. Low battery value is 30%.



## 10. Set the local time

Send “:123456L±XX:YY#” to the tracer to set the local time zone.

**Note:** L must be capital, ‘+’ means east, ‘-’ means west. ‘XX’ is hour, ‘YY’ is minute . Beijing time zone is +08:00, Angeles time zone is ‘-08:00’. YY should be 00, 15, 30, and 45. For example: send “:123456L+05:30#” to set the east 5:30

## 11. GSM Setting

Send “:123456B#” to get the IMEI number of the unit. ‘B’ must be capital.

**Note:** Before you execute the following GPRS connection, please submit the IMEI # to the manufacturer to register the IMEI #.

Send “:123456CAPN,IP:Port#” to set the APN, IP and port.

**Note:** C must be capital. Please get APN from your local GSM operators. IP&Port is the server IP and Port you want to connect to.

**E.g.** send “:123456CCMNET,255.255.255.255:10001#”.

CMNET is the APN of China Mobile, ‘255.255.255.255 and 10001’ is an example IP and Port.

## 12. Check tracker’s parameters

Send command :123456G# to check the parameters. The respond is as follow:

**(Note, Please contact US)**

## 13. Displaying location on Google map

Go to <http://maps.google.com> and type in the latitude and longitude like this:

**22.7640801N,114.3975566E**, click search button, then you can see the position.

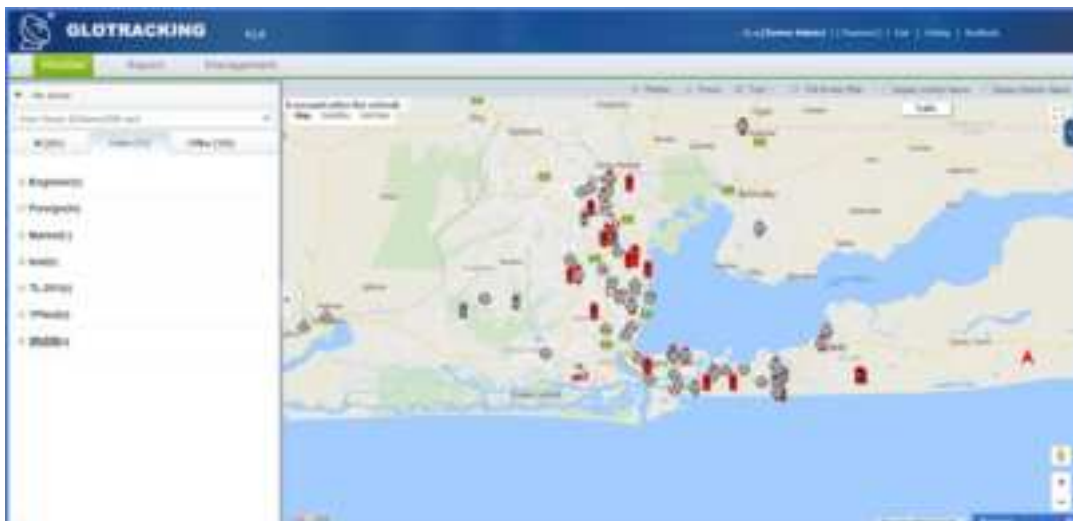


## 14. GPS tracking platform



Platform address: [www.glotracking.com](http://www.glotracking.com)

You can login our platform or download Android App



The platform is based on Google map, whose function is very powerful. Users can select functions according to their needs.

## 15. Cautions

1. Keep the unit dry. Any liquid, i.e. rain, moisture, may destroy or damage the inside circuitry.
2. Don't put the unit in overheated or overcooled places.
3. Handle carefully. Don't vibrate or shake it violently.



4. Clear the unit with a piece of dry cloth. Don't clean in chemicals, detergent.
5. Don't paint the unit, this may cause some foreign materials left in between the parts.
6. Please don't disassemble or refit the unit. The system should be installed by technical personnel.
7. Please use the battery and charger provided by manufacturer. Using other batteries and chargers will cause unwanted situation.
8. This product should be used in the normal condition of GPS signal and GSM signal. If not, it will result in the inability to locate (GPS) or locate data that cannot be transmitted (GSM).
9. The product has positioning tracking and monitoring functions, the user must use it within the legal limit. If the user illegally use it (such as Invasion of privacy ) that lead to damage of others' rights and interests , the consequences are the user's responsibility .
10. This product is to obtain position information through the satellite, the location data drift, it is normal phenomenon. For it is limited by the satellite positioning transmission characteristic.
11. In case of any damage to the product, you should promptly contact the dealer for repair. Maintenance matters shall be carried out by professional technicians designated by the original manufacturer.

## 16. commands lists

Instruction format: password+ commend+ (parameter)+ ,(parameter)		
Definition	cmd Content	Description
Get position manually	:123456F#	It will reply the latitude and longitude information to the server.



<b>Set continuous tracking</b>	<b>:123456Mx,yyyz#</b>	x=1 means on, x=0 means off yyy means time interval. If z=S/M it should be <=255. if z=H, it should be <=090. It must be three numbers, 030S means 30S, Z means time unit, z=S means second, z=M means minute, z=H means hour Note: 020S<yyyz<090H.
<b>e.g.</b>	<b>:123456M1,030S#</b>	The tracker will reply the position according to the time interval you set (30 seconds). If the tracker has connected to server it will send to the server by LTE Cat.M1/NB network.
<b>Sample of setting the time zone</b>	<b>123456Lxyy</b>	x=+ means east x=- means west yy means the time zone, must be 2 numbers
<b>e.g.</b>	<b>123456L+08</b>	set the east 8 zone
<b>Set the low battery alarm</b>	<b>123456Nx,yy#</b>	x=1 means on, x=0 means off yy means battery lower then yy% then send the alarm. It must be <45. it must be 2 numbers.
<b>e.g.</b>	<b>123456N1,40#</b>	The tracker will send a low battery alarm if the battery is lower then 40%
<b>Modify the password</b>	<b>123456H456789#</b>	SMS commend: the old +H+ the new one The default factory password for the device is: 123456 456789 is the new password, new password must be 6 numbers
<b>Set the APN, IP and port</b>	<b>123456C\$\$\$\$,IP:Port#</b>	\$\$\$\$ is the APN, you can get the APN from your local GSM provider.
<b>e.g.</b>	<b>123456CCMNET, 119.122.101.91:7289#</b>	CMNET is the APN of China mobile.
<b>Get the IMEI number</b>	<b>123456B#</b>	The device will reply to the authorization number IMEI
<b>Restart the device</b>	<b>RESET!1#</b>	Restart the device

(Note, more cmd, please contact US)



### **FCC Statement**

This equipment has been tested and found to comply with the limits for a Class B digital device, pursuant to Part 15 of the FCC Rules. These limits are designed to provide reasonable protection against harmful interference in a residential installation. This equipment generates uses and can radiate radio frequency energy and, if not installed and used in accordance with the instructions, may cause harmful interference to radio communications. However, there is no guarantee that interference will not occur in a particular installation. If this equipment does cause harmful interference to radio or television reception, which can be determined by turning the equipment off and on, the user is encouraged to try to correct the interference by one or more of the following measures:

- Reorient or relocate the receiving antenna.
- Increase the separation between the equipment and receiver.
- Connect the equipment into an outlet on a circuit different from that to which the receiver is connected.
- Consult the dealer or an experienced radio/TV technician for help.

This device complies with part 15 of the FCC Rules. Operation is subject to the following two conditions: (1) This device may not cause harmful interference, and (2) this device must accept any interference received, including interference that may cause undesired operation.

Changes or modifications not expressly approved by the party responsible for compliance could void the user's authority to operate the equipment.

SAR compliance for body-worn operation is based on a separation distance of 0 mm between the unit and the human body. Carry this device at least 0 mm away from your body to ensure RF exposure level compliant or lower to the reported level. To support body-worn operation, choose the belt clips or holsters, which do not contain metallic components, to maintain a separation of 10 mm between this device and your body.

RF exposure compliance with any body-worn accessory, which contains metal, was not tested and certified, and use such body-worn accessory should be avoided.