

Wireless gaming controller G5PRO

operation instructions

security information

Before using and operating the equipment, please read and follow the following precautions to ensure normal equipment performance and avoid dangerous or illegal situations.

1. Please use this device within the temperature range of 0C~35 ℃, and store the device and its accessories within the temperature range of -10 ℃~+40 ℃. When the ambient temperature is too high or too low, it may cause equipment malfunction.
2. This device and its accessories may contain some small parts. Please keep the device and its accessories out of reach of children. Children may unintentionally damage this device and its accessories, or swallow small parts that can cause suffocation or other hazards.
3. Please avoid the equipment and its accessories from being exposed to rain or moisture, as this may result in a fire or electric shock hazard.
4. Please keep the device and its battery away from sources of ignition, high temperatures, and direct sunlight. Do not throw batteries into fire, do not disassemble, drop, squeeze, or modify batteries, do not insert or puncture batteries with foreign objects, do not immerse batteries in water or other liquids, and avoid external heavy blows and pressure to prevent battery leakage, overheating, ignition, or explosion.
5. Do not replace the battery on your own, as this may damage the battery, causing it to overheat, catch fire, and cause personal injury.
6. Do not disassemble or modify equipment (including replacing built-in batteries) and accessories without authorization, otherwise the equipment and accessories will not be covered by our company's warranty.
7. Please dispose of this equipment, batteries, and other accessories according to local regulations and do not dispose of them as household waste. Improper disposal of batteries may lead to battery explosion.

1. Packaging and accessories instructions

GamePad*1、Charging data cable*1、instructions*1

2. Key Layout View



3. Connection Information Table

Wired Connection Mode Information Table:


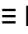

Connected Device	SWITCH	Android Smart TV	Windows computer
mode	SWITCH	DINPUT	XINPUT
Wired	USB 2.0/3.0	USB 2.0/3.0	USB 2.0/3.0
pilot lamp	Automatic assign LED	LED1、4	LED2
vibrate	√	No vibration	√
TURBO	√	√	√
key-press programmable method	√	√	√
notes	Six axis somatosensory, screenshot		The default mode for powering on is X-Input mode, and LED2 is on; Long press and hold the (A+B+Home) key for 1 second to switch to the D-Input/Switch mode, and cycle through the three modes. Mode power-off not saved

Wireless Connection Mode Information Table:

device	SWITCH	Android devices	computer(Windows)	iOS	
mode	SWITCH	DINPUT	XINPUT	XINPUT	
Switch position	Switch	Android	PC/ios	PC/ios	
pilot lamp	LED3	LED4	LED2	LED2	
Pairing method	Move the back mode gear of the handle, press and hold the LOGO button for about 3 seconds, and the channel LED light will flash quickly. After successful connection, the corresponding LED light will remain on for 3 seconds, and then return to the battery level display				
Reconnection	Short press the logo button on the handle for about 1 second, and the channel LED light will slowly flash. After successful reconnection, the corresponding LED light will remain on for 3 seconds, and then return to the battery level display				
Device Name	Pro Controller	MACHENIKE G5Pro	XboxWireless Controller	XboxWireless Controller	
vibrate	√		√		
TURBO	√	√	√		

4、Key specifications:

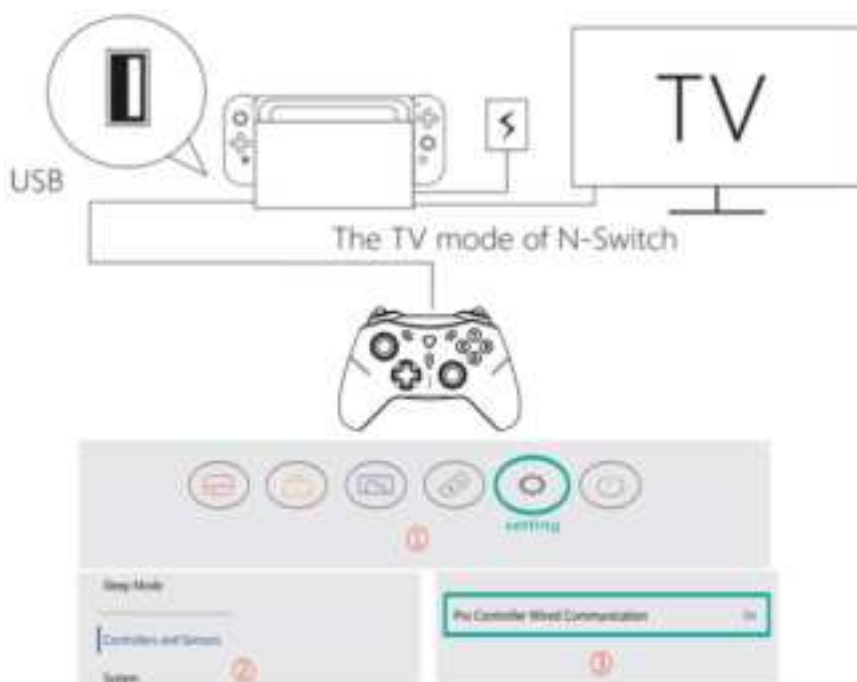
- 1、LOGO(HOME)key*1: Short press to connect back and return to the main interface; Long press for 3-4 seconds to pair. Shutdown (long press for 5-8 seconds)。
- 2、Direction keys*1: Up, Down, Left, Right。Cross key multi-directional operation。
- 3、Function control keys*4: A、B、Y、X。
- 4、Left and Right Rockers*2: Left and right rocker design。A brand new Hall electromagnetic induction 3D joystick that can be operated in all directions。
- 5、Left and right shoulder keys*2: LB、RB: Using a touch switch for quick response performance。

- 6、Left and right trigger keys*2: LT、RT: Using Hall electromagnetic induction linear trigger for better experience performance。
- 7、 key*1: There are different button functions in different gaming devices。
- 8、 key (Start/Menu Keys) *1: There are different button functions in different gaming devices。
- 9、 key (FN key) *1。The combination keys achieve different functions, as described below。
- 10、Logo Key indicator light, slow flashing when reconnecting, fast flashing when pairing。

6、Controller connection to host devices

Wired Switch Host

- 1) Turn on the communication function of the Pro wired handle in the system settings of the Switch host。
- 2) Place the Switch host into the base and secure it, connecting the host base to the display device。
- 3) When the handle is turned off, it is connected to the USB port on the side of the host base through a USB data cable. The handle automatically connects to the Switch host. After successful connection, the corresponding LED light on the handle remains on, and it can be used as a Switch wired handle。



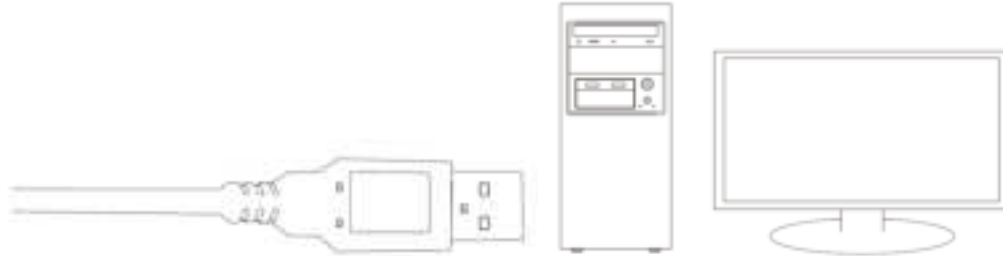
Wireless Bluetooth Connection Switch Host:

- 1) First time connecting to the host: In the main menu interface of the switch host, touch and click on "Handle" ->"Change Grip" to enter the host pairing mode interface;
- 2) In the off state of the handle, first pull the switch on the back to the Switch position, press and hold the menu button of the handle for about 3 seconds, until the LED3 indicator light of the handle quickly flashes and enters the search state. After successful pairing, the LED3 indicator light of the handle remains on for 3 seconds, and then return to the battery indicator. Press the menu button to return to the main interface for operation.



Wired connection to Windows system computer

- 1) The handle is connected to the USB port of the computer through a USB data cable, and the handle automatically connects to the PC. The LED2 channel light on the handle flashes three times, and then the LED2 remains on. The handle supports the Xinput mode.
- 2) Dinput mode: Connect the handle to the USB port of the computer through a USB data cable, and then press and hold the A+B+HOME key for about 1 second to switch to Dinput mode. The Dinput mode will be automatically recognized, and LED4 on the handle will flash 3 times, then LED4 will remain on, indicating that the handle supports Dinput mode.



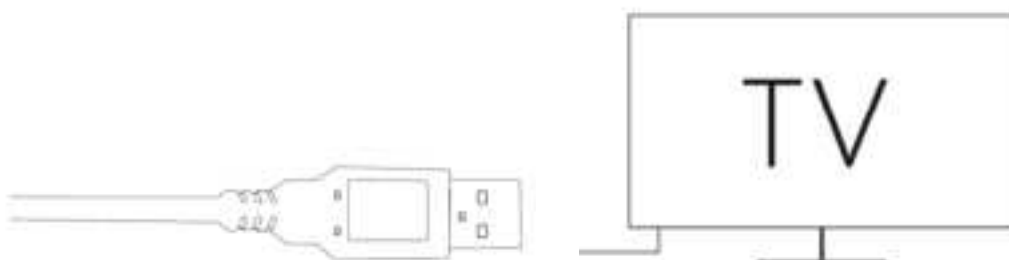
Handle Bluetooth wireless connection to PC devices (using Win10 with Bluetooth as an example)

- 1) When the handle is turned off, turn the switch on the back of the handle to the PC/iOS position, and then press and hold the handle menu button for about 3 seconds until the LED2 indicator light on the handle quickly flashes, entering the pairing state.
- 2) On the Windows system computer, open Settings - Bluetooth and other devices - Add Bluetooth devices - Enter search mode.
- 3) Click on 'Xbox Wireless Controller' in the Bluetooth device search. After successful pairing, the LED2 light on the handle remains on for 3 seconds, and then returns the battery indicator, indicating that the Bluetooth device has been successfully added;
- 4) When the handle is not in use, the Bluetooth receiver can be unplugged or the handle can be turned off; The handle has Bluetooth memory function. When next used, the handle can be awakened by briefly pressing the menu key for 1 second and automatically connected back to the paired Windows system computer.



Handle wired connection to Android TV device:

When the handle is turned off, it is connected to the USB port of the Android device through the TYPE-C data cable. The handle is automatically connected to the Android handle, and after successful connection, the LED 2 light on the handle remains on. Supports HID standard mode for Android TV devices.



Wireless Bluetooth connection to Android devices:

When the handle is turned off, turn the switch on the back to the Android position, press and hold the menu button for 3 seconds to directly enter pairing mode, and the LED2 light on the handle flashes quickly. When opening Bluetooth search on Android devices and searching for a Bluetooth device named "MACHENIKE G5Pro", click on pairing. After successful pairing, the LED 2 light on the handle remains on. The handle enters Android HID standard mode. Note that touch screen gaming operations are not supported. (Hold down the menu key while reconnecting)



Wireless Bluetooth connection to IOS devices:

When the handle is turned off, turn the switch on the back to the PC/iOS position and press and hold the Home button for 3 seconds to directly enter pairing mode. When pairing, LED2 flashes quickly. At the same time, when Bluetooth search is turned on in the Apple device and a Bluetooth device named "Xbox Wireless Controller" is found, click "Pair". After successful pairing, LED2 will continue to light up for 2 seconds to return the battery indicator.

Note: The handle enters iOS standard mode. Only MFI game operations are supported.



7、Expand functionality

1) Lighting management

Single light color switching: Built in 4 light colors - press and hold FN and then click the HOME button to switch the light color configuration, and save the configuration after power outage.

Configuration 1: Ice blue light with color. When switching modes, the LED1 light remains on for 3 seconds before returning to the battery indicator.

Configuration 2: Red light with color. When switching mode 2, the LED2 light remains on for 3 seconds before returning to the battery indicator.

Configuration 3: Yellow light with color. When switching mode three, the LED3 light remains on for 3 seconds before returning to the battery indicator.

Configuration 4: Green light with color. When switching mode 4, the LED 4 light remains on for 3 seconds before returning to the battery indicator.

Note: The brightness level of this decorative strip is adjusted synchronously with the global light brightness. When

the FN+HOME keys are combined, the HOME key function will not be displayed。

Simultaneously press the (FN) key and the right cross key to adjust the lighting mode (colorful streamer changing/monochrome constantly bright/monochrome breathing/colorful changing/monochrome running horse/monochrome bidirectional running horse/off); Press (FN) and the left cross key simultaneously to dim the light and cycle through the adjustment. The percentage of different light effects is 0%. 50%. 75%. 100%. Adjusting with memory function。

2) Description of the power indicator light on the handle:

LED light indication: LED light indicates from bottom to top: battery level display: 1 * LED 4 is on, indicating 0-25%. 3.4-3.59V. Two LED 3.4 lights are 26-50%, 3.6-3.89V; The three LED2.3.4 lamps are 51-75% and 3.8-3.99V respectively; Four LED lights are 76-100% and 4.0-4.2V respectively

- 1) Search for pairing indicator light: The corresponding mode channel indicator light LED flashes quickly, indicating that the handle is in pairing state
- 2) Connection indicator light: The HOME key and battery indicator light are constantly on, indicating that the connection between the handle and the host is normal
- 3) Low voltage indication: The battery voltage of the handle is too low, and LED4 flashes quickly, indicating that the handle is in a low power state; When the battery voltage of the handle is below 3.6V, a low voltage alarm will be issued and the indicator light will quickly flash. When the voltage is below 3.4V, the handle will automatically close and cannot be opened;
- 4) Charging indicator light: When charging to 0-25%, only LED4 light flashes; When charging to 26-50%, LED4 remains on and LED3 flashes; When charging to 51-75%, LED3.4 remains on and the LED2 indicator light flashes; When charging to 76-99%, the first three grille lights remain on and the LED1 light flashes; After being fully charged, the four LED lights remain on for one minute, and then the four lights go out.

3) Vibration intensity adjustment (Valid on PC and Switch hosts)

1. Vibration intensity adjustment: Pressing both the FN and cross keys simultaneously enhances the vibration; Pressing both the FN and cross keys simultaneously reduces the vibration。
2. There will be an indicator light and a vibration prompt during adjustment。
3. There are 5 gears in total, 0. Close. 1. The weakest. 2. Weak strength. 3. Moderate strength. 4. The strongest vibration. Default 3 medium gear。
4. When adjusting, there will be corresponding indicator lights flashing. Flashing for 3 times. Vibration adjustment with memory function。。

4) Serial function key setting (TURBO) :

Support setting TURBO buttons: A, B, X, Y. There are three speeds that can be set - manual combo, automatic combo, and cancel combo.

Manual TURBO: First press and hold the button that needs to be set, and the first time press the FN button, this button will activate the semi-automatic continuous sending function;



Automatic TURBO: Press the FN key and this key for the second time to enable the fully automatic continuous sending function. Press this key alone to pause; Press the FN key+this key for the third time to cancel the continuous sending function of this key。

5) Macro Definition Programming Key Operation Settings:

1. Enable macro function key recording: When the handle is connected, press the FN+M1/M2 combination key. For example, if the FN+M1 key is pressed, the customization mode of the M1 key will be activated, and the backlight of the decorative light bar will continue to flash.
2. Then press the buttons that need to be set in sequence, supporting 14 keys<A, B, X, Y, up, down, left and right, LB, LB, RT, RT, L3, R3 keys>After the setting is completed, short press the M1 key, and the decorative light bar of the handle will stop flashing and return to the previous mode, indicating that the setting is complete. (For example, press and hold the FN+M1 keys, then press the A, B, X, and Y keys in sequence. After setting, briefly press the M1 key to save and exit. At this time, the function of pressing the M1 key is to send out the A, B, X, and Y keys in sequence.)
3. Clear current macro definition operation: When the handle is working, press FN+M1 at the same time to continuously flash the decorative light with backlight on the handle. Then, press the M1 key again to stop flashing the decorative light with backlight on the handle. This will clear the current custom function.
4. After the power is turned off and restarted, the handle will remember the last operation of the macro programming key. Save the


last settings。

6) Handle sensor calibration:

Calibration of the gyroscope axis function of the handle: Press the left  key, Home key, and A key simultaneously for 3 seconds, and the channel lights 1.2/3.4 will flash alternately. Then press the right  key, and wait for the channel indicator light to turn off to complete calibration. Note that during calibration, the handle cannot be moved。

7) Rocker and trigger calibration method:

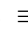
Left and right joystick+left and right trigger calibration operation:

1、Press the  key, Home key, and B key simultaneously in the shutdown state for 3 seconds to start calibration.

During calibration, the channel indicator light 1.4/2.3 flashes alternately。

2、Rocker calibration: Slowly fill the left and right rockers, complete more than three turns。

3、Trigger calibration: Press the LT key and RT key to the bottom three times each。

4、Finally, press the  SELECT key once to complete the calibration and automatically shut down the machine。

8: Product parameters

project	Reference specifications
input parameter	5V/500mA
Battery capacity	3.7V/600mAh
Working current	<100mA
Standby current	<30uA
Vibration current	80-180mA
Charging current	50-500mA
charging time	2-4H
endurance	5-8H
Product size	155*106*60mm

This device complies with part 15 of the FCC Rules. Operation is subject to the following two conditions: (1) This device may not cause harmful interference, and (2) this device must accept any interference received, including interference that may cause undesired operation.

Any Changes or modifications not expressly approved by the party responsible for compliance could void the user's authority to operate the equipment.

Note: This equipment has been tested and found to comply with the limits for a Class B digital device, pursuant to part 15 of the FCC Rules. These limits are designed to provide reasonable protection against harmful interference in a residential installation. This equipment generates uses and can radiate radio frequency energy and, if not installed and used in accordance with the instructions, may cause harmful interference to radio communications. However, there is no guarantee that interference will not occur in a particular installation. If this equipment does cause harmful interference to radio or television reception, which can be determined by turning the equipment off and on, the user is encouraged to try to correct the interference by one or more of the following measures:

- Reorient or relocate the receiving antenna.
- Increase the separation between the equipment and receiver.
- Connect the equipment into an outlet on a circuit different from that to which the receiver is connected.
- Consult the dealer or an experienced radio/TV technician for help.

RF warning for Portable device: The device has been evaluated to meet general RF exposure requirement. The device can be used in portable exposure condition without restriction.