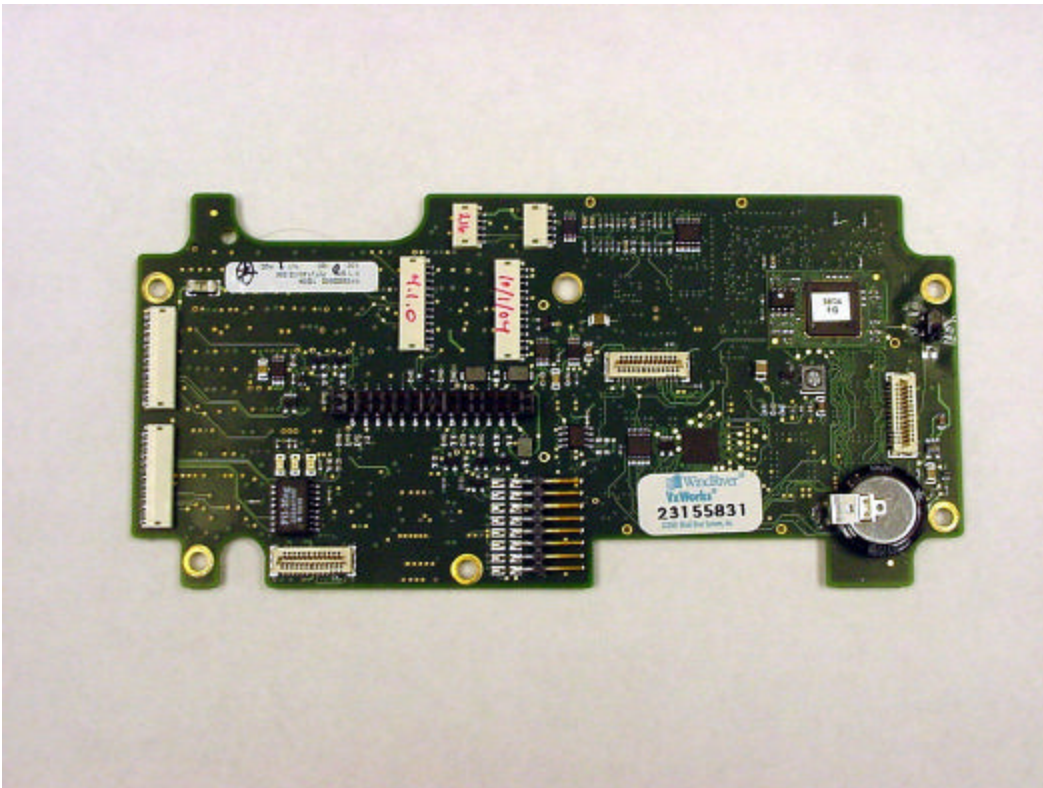
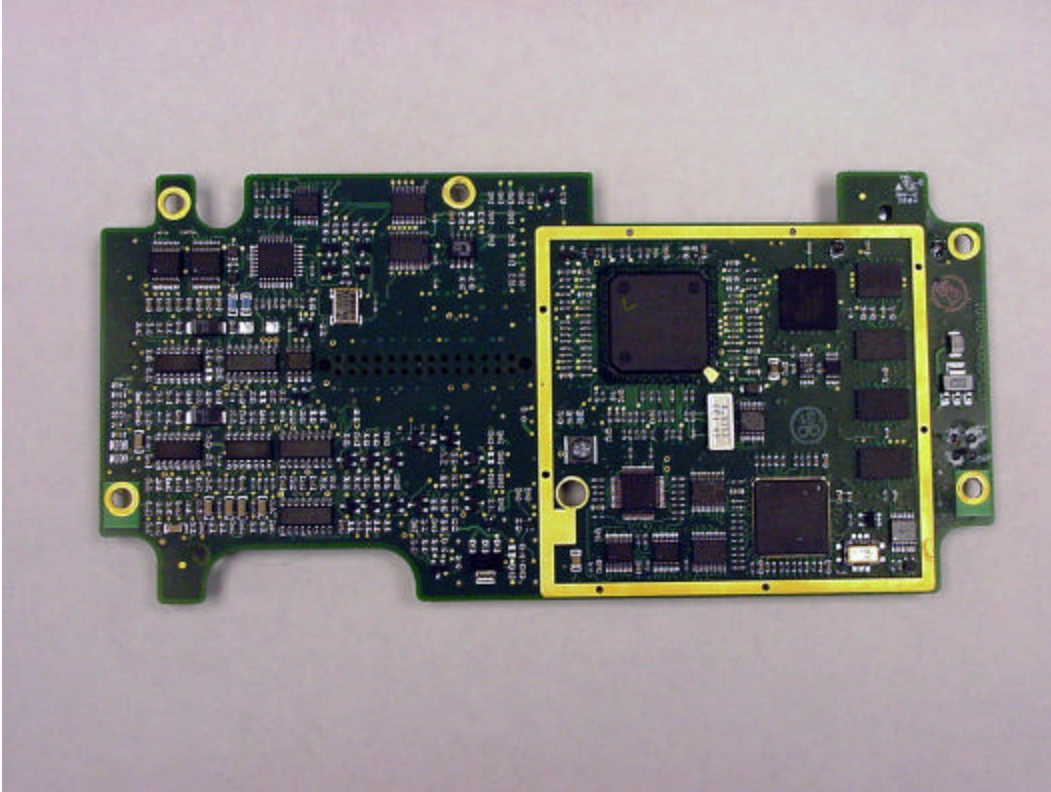


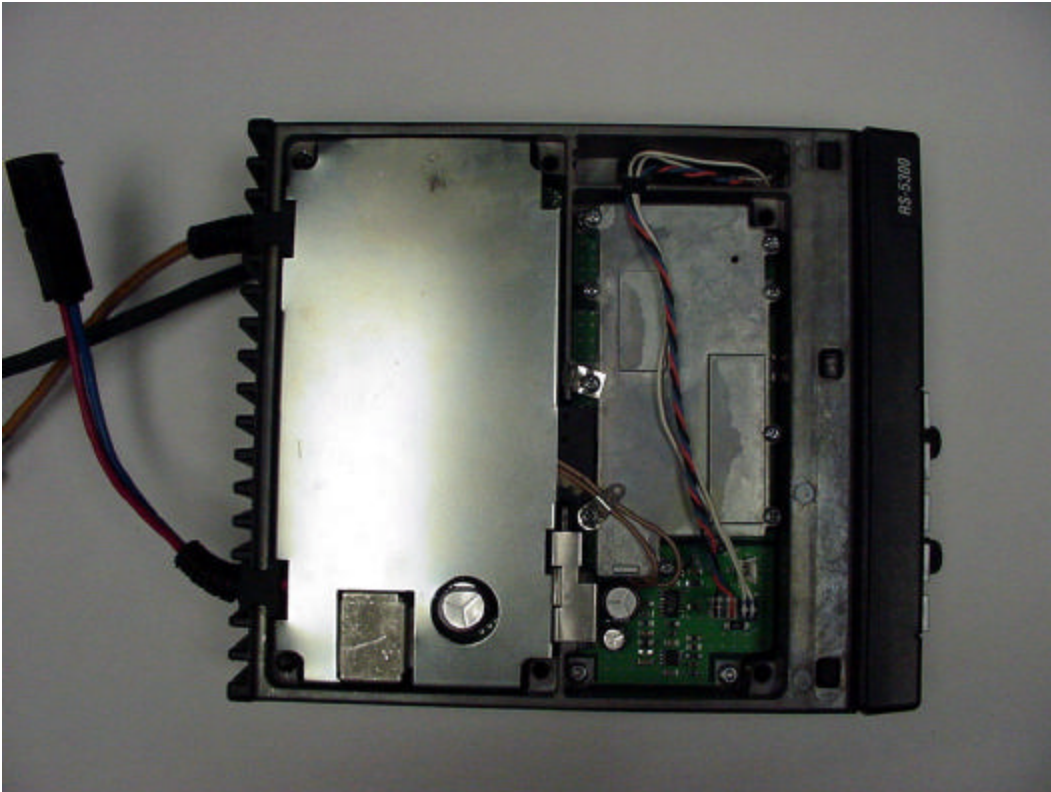
Radio bottom with cover removed showing logic board



Logic board top

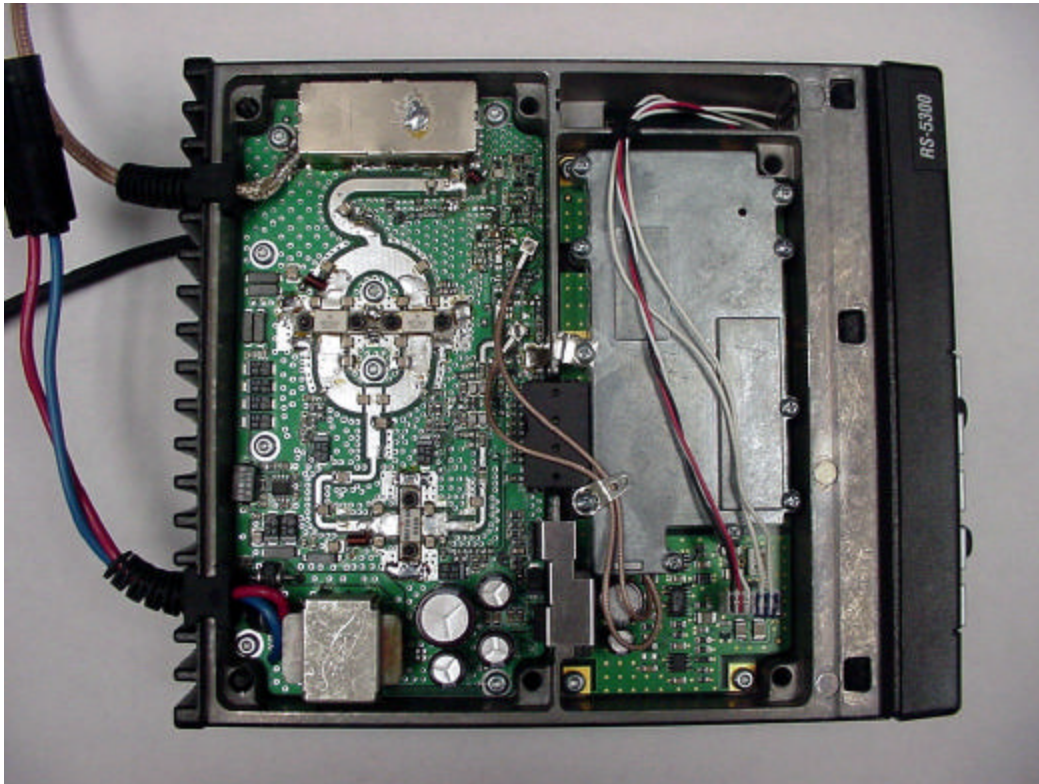


Logic board bottom

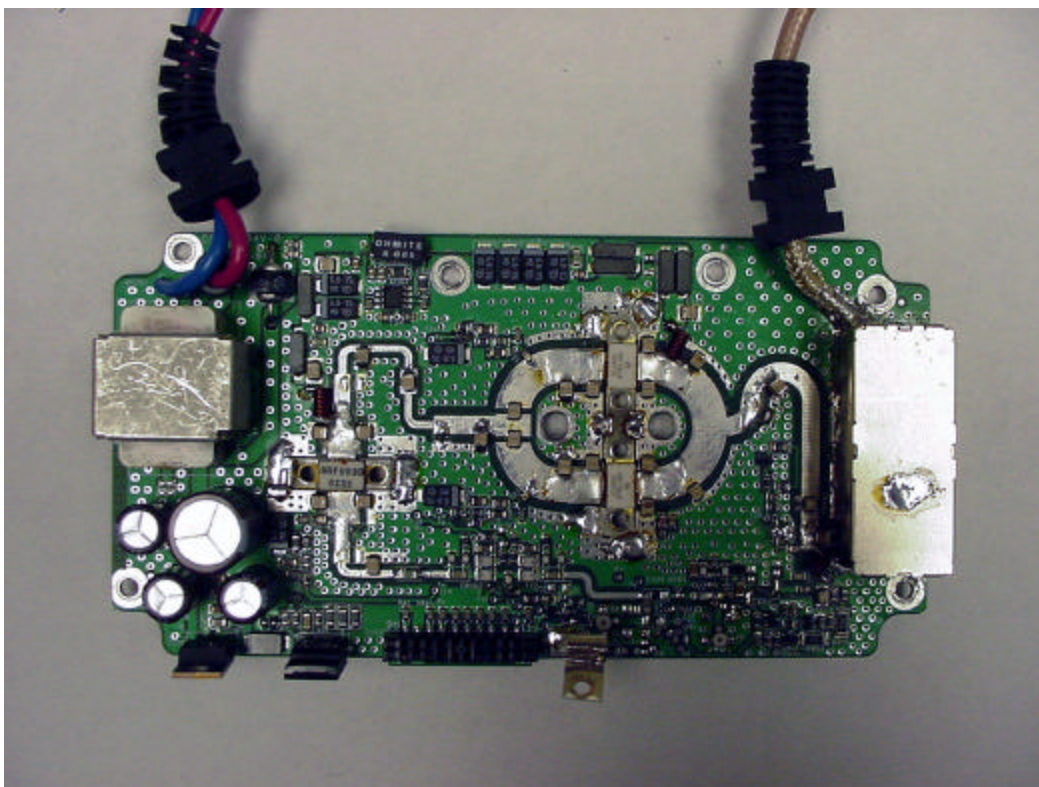


Radio top view with cover removed showing shields

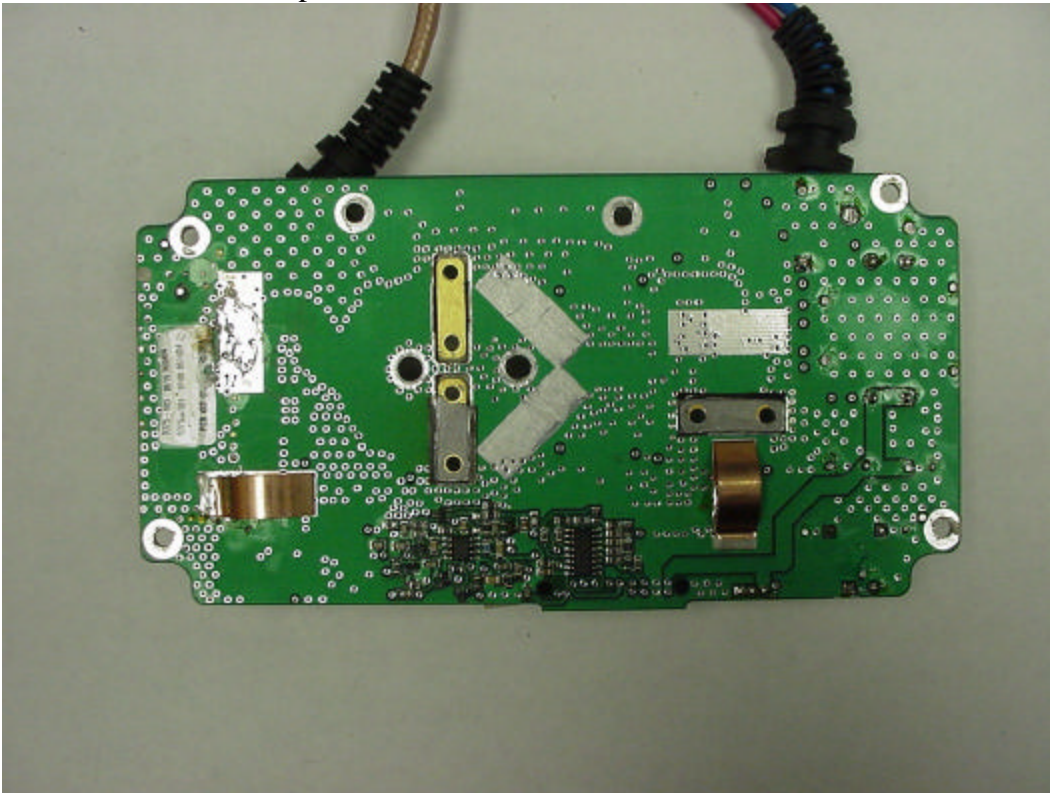




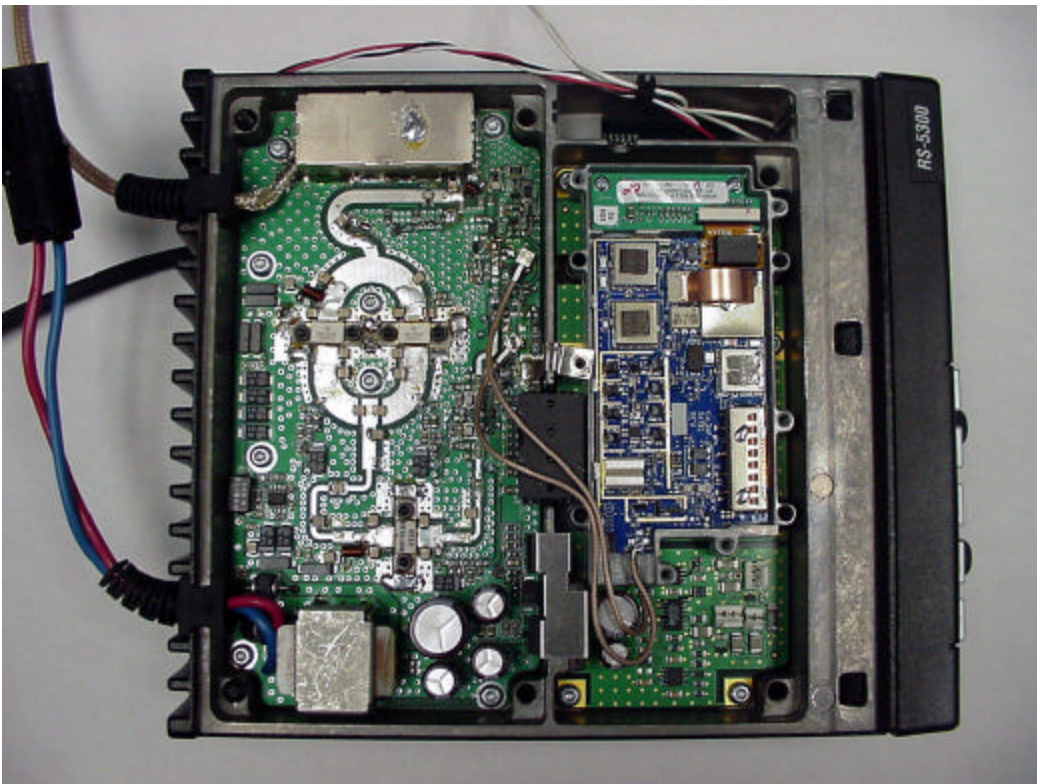
Radio top view with PA shield removed



Transmitter PA board top

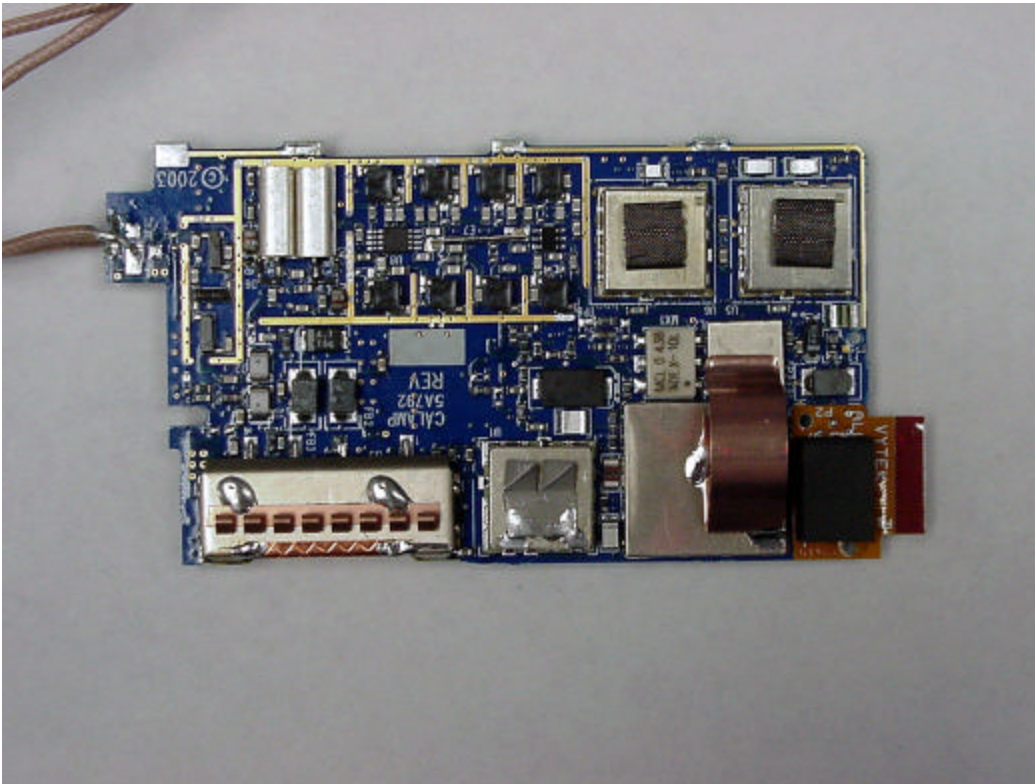


Transmitter PA board bottom

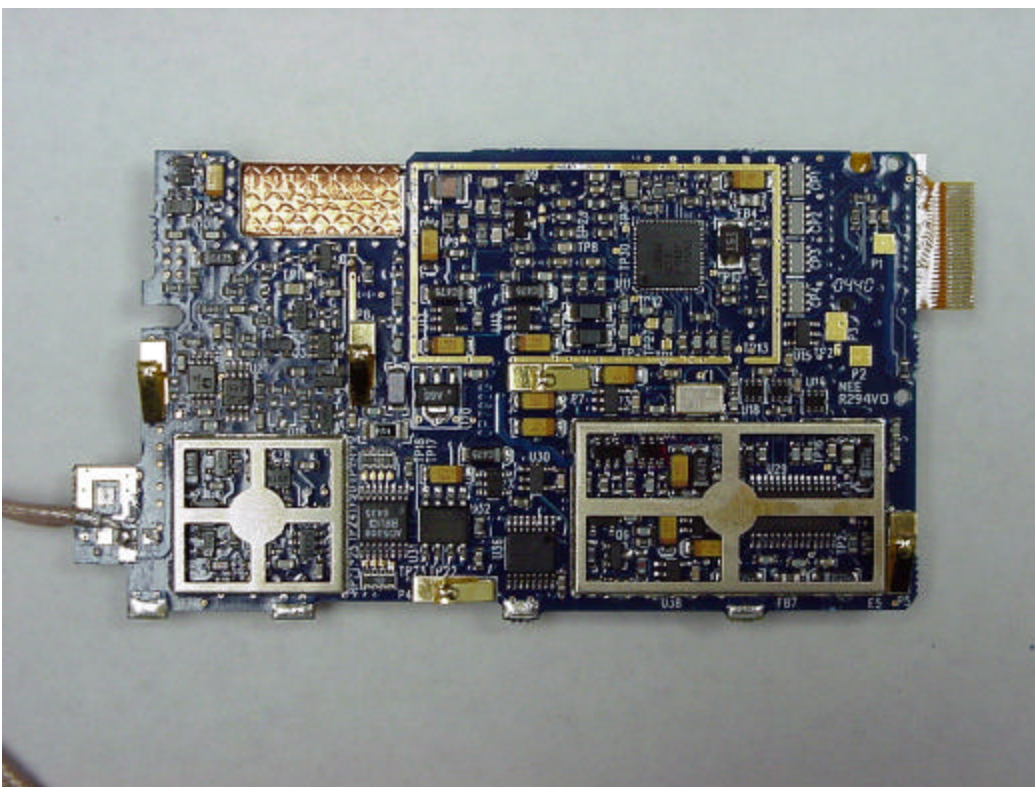


Radio top view with RF module cover removed

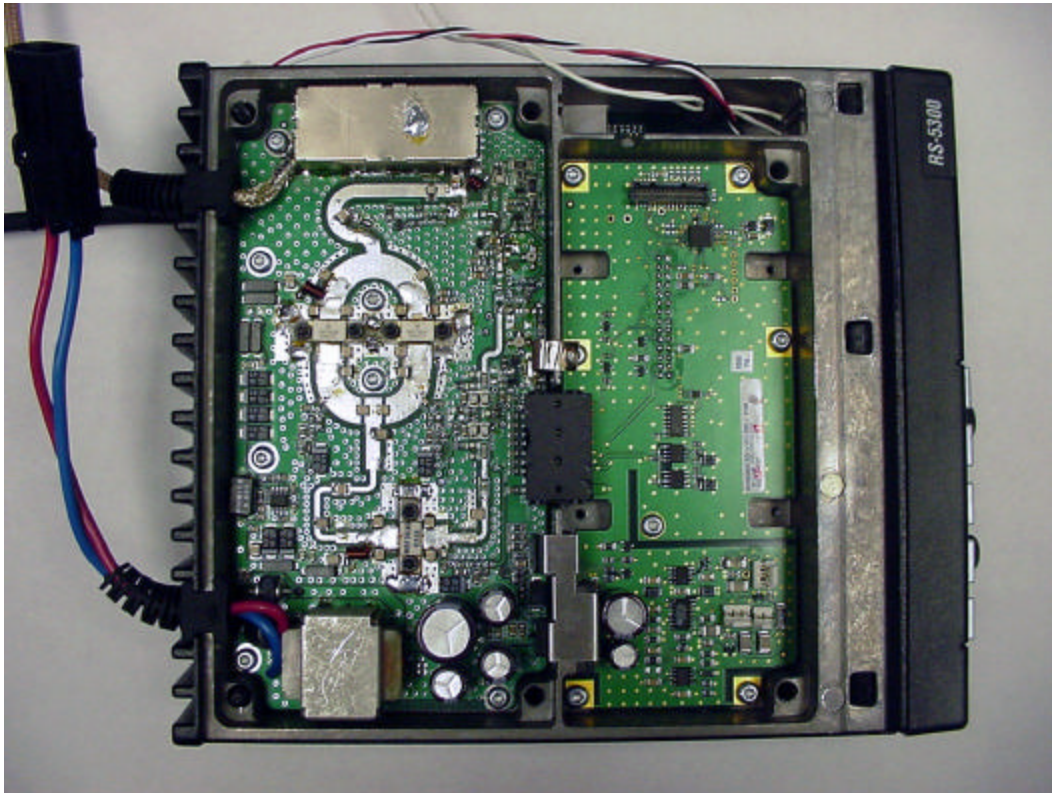




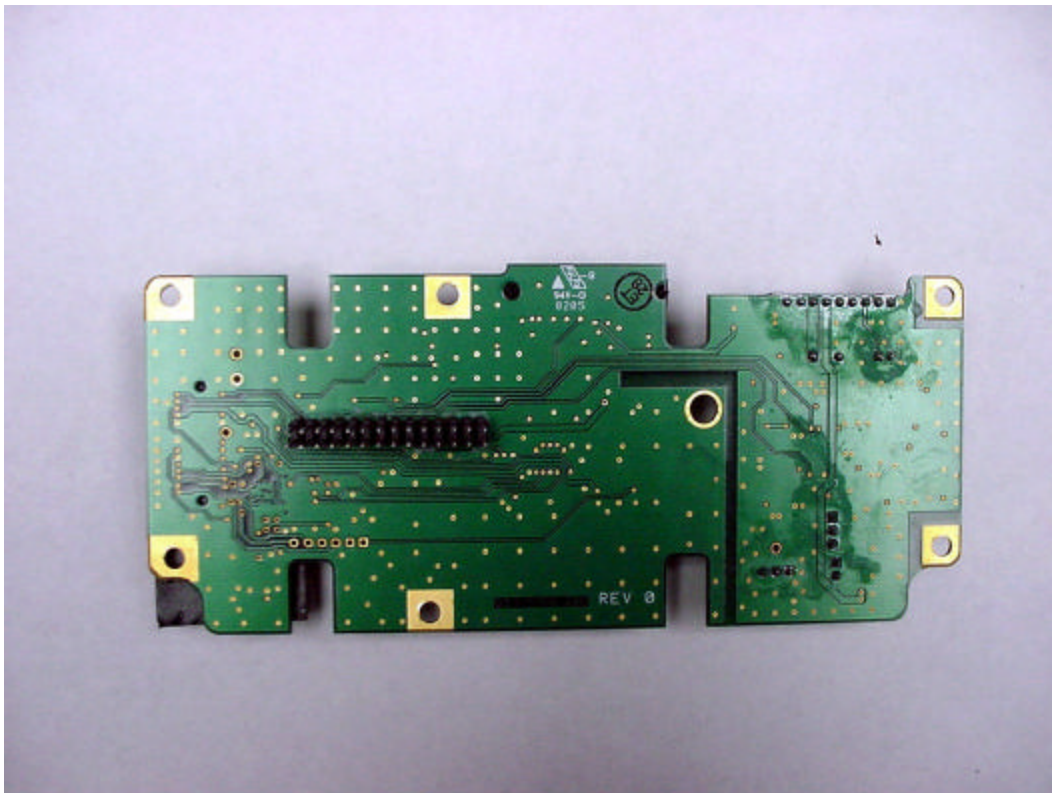
RF module top with shields removed



RF module bottom with shields removed



Radio top with RF module removed showing interconnect board top



Interconnect board bottom