

10168-CAE	LTE-FDD (SC-FDMA, 50% RB, 1.4 MHz, 64-QAM)	X	4.49	76.44	22.00	3.01	150.0	± 9.6 %
		Y	4.31	74.34	20.75		150.0	
		Z	4.29	76.38	21.59		150.0	
10169-CAD	LTE-FDD (SC-FDMA, 1 RB, 20 MHz, QPSK)	X	2.59	68.04	18.76	3.01	150.0	± 9.6 %
		Y	2.62	67.42	18.09		150.0	
		Z	2.53	67.98	18.27		150.0	
10170-CAD	LTE-FDD (SC-FDMA, 1 RB, 20 MHz, 16-QAM)	X	3.49	74.23	21.37	3.01	150.0	± 9.6 %
		Y	3.41	72.75	20.32		150.0	
		Z	3.58	75.13	21.26		150.0	
10171-AAD	LTE-FDD (SC-FDMA, 1 RB, 20 MHz, 64-QAM)	X	2.78	69.29	18.02	3.01	150.0	± 9.6 %
		Y	2.80	68.69	17.44		150.0	
		Z	2.71	69.37	17.54		150.0	
10172-CAD	LTE-TDD (SC-FDMA, 1 RB, 20 MHz, QPSK)	X	5.88	87.05	27.69	6.02	65.0	± 9.6 %
		Y	5.30	83.58	25.79		65.0	
		Z	3.26	76.76	23.19		65.0	
10173-CAD	LTE-TDD (SC-FDMA, 1 RB, 20 MHz, 16-QAM)	X	13.70	99.60	29.81	6.02	65.0	± 9.6 %
		Y	8.94	90.25	26.22		65.0	
		Z	7.04	88.51	25.48		65.0	
10174-CAD	LTE-TDD (SC-FDMA, 1 RB, 20 MHz, 64-QAM)	X	8.59	90.19	26.23	6.02	65.0	± 9.6 %
		Y	7.13	85.48	24.05		65.0	
		Z	3.88	78.05	21.26		65.0	
10175-CAE	LTE-FDD (SC-FDMA, 1 RB, 10 MHz, QPSK)	X	2.56	67.69	18.48	3.01	150.0	± 9.6 %
		Y	2.59	67.13	17.84		150.0	
		Z	2.49	67.60	17.97		150.0	
10176-CAE	LTE-FDD (SC-FDMA, 1 RB, 10 MHz, 16-QAM)	X	3.50	74.26	21.39	3.01	150.0	± 9.6 %
		Y	3.41	72.77	20.34		150.0	
		Z	3.59	75.16	21.28		150.0	
10177-CAG	LTE-FDD (SC-FDMA, 1 RB, 5 MHz, QPSK)	X	2.58	67.83	18.56	3.01	150.0	± 9.6 %
		Y	2.61	67.26	17.92		150.0	
		Z	2.51	67.74	18.05		150.0	
10178-CAE	LTE-FDD (SC-FDMA, 1 RB, 5 MHz, 16-QAM)	X	3.47	74.07	21.28	3.01	150.0	± 9.6 %
		Y	3.39	72.61	20.24		150.0	
		Z	3.55	74.95	21.17		150.0	
10179-CAE	LTE-FDD (SC-FDMA, 1 RB, 10 MHz, 64-QAM)	X	3.09	71.56	19.53	3.01	150.0	± 9.6 %
		Y	3.06	70.57	18.74		150.0	
		Z	3.07	71.92	19.18		150.0	
10180-CAE	LTE-FDD (SC-FDMA, 1 RB, 5 MHz, 64-QAM)	X	2.77	69.24	17.98	3.01	150.0	± 9.6 %
		Y	2.80	68.64	17.41		150.0	
		Z	2.71	69.32	17.51		150.0	
10181-CAD	LTE-FDD (SC-FDMA, 1 RB, 15 MHz, QPSK)	X	2.57	67.81	18.56	3.01	150.0	± 9.6 %
		Y	2.61	67.24	17.92		150.0	
		Z	2.50	67.72	18.05		150.0	
10182-CAD	LTE-FDD (SC-FDMA, 1 RB, 15 MHz, 16-QAM)	X	3.47	74.04	21.27	3.01	150.0	± 9.6 %
		Y	3.38	72.59	20.23		150.0	
		Z	3.55	74.92	21.15		150.0	
10183-AAC	LTE-FDD (SC-FDMA, 1 RB, 15 MHz, 64-QAM)	X	2.77	69.22	17.97	3.01	150.0	± 9.6 %
		Y	2.79	68.62	17.39		150.0	
		Z	2.70	69.30	17.49		150.0	

10184-CAD	LTE-FDD (SC-FDMA, 1 RB, 3 MHz, QPSK)	X	2.58	67.85	18.58	3.01	150.0	± 9.6 %
		Y	2.61	67.28	17.94		150.0	
		Z	2.51	67.77	18.07		150.0	
10185-CAD	LTE-FDD (SC-FDMA, 1 RB, 3 MHz, 16-QAM)	X	3.48	74.12	21.31	3.01	150.0	± 9.6 %
		Y	3.40	72.66	20.27		150.0	
		Z	3.57	75.02	21.20		150.0	
10186-AAD	LTE-FDD (SC-FDMA, 1 RB, 3 MHz, 64-QAM)	X	2.78	69.28	18.01	3.01	150.0	± 9.6 %
		Y	2.80	68.68	17.43		150.0	
		Z	2.72	69.36	17.53		150.0	
10187-CAE	LTE-FDD (SC-FDMA, 1 RB, 1.4 MHz, QPSK)	X	2.59	67.95	18.68	3.01	150.0	± 9.6 %
		Y	2.63	67.36	18.02		150.0	
		Z	2.53	67.88	18.18		150.0	
10188-CAE	LTE-FDD (SC-FDMA, 1 RB, 1.4 MHz, 16-QAM)	X	3.60	74.88	21.75	3.01	150.0	± 9.6 %
		Y	3.49	73.27	20.64		150.0	
		Z	3.72	75.91	21.69		150.0	
10189-AAE	LTE-FDD (SC-FDMA, 1 RB, 1.4 MHz, 64-QAM)	X	2.84	69.72	18.31	3.01	150.0	± 9.6 %
		Y	2.86	69.05	17.69		150.0	
		Z	2.78	69.83	17.84		150.0	
10193-CAB	IEEE 802.11n (HT Greenfield, 6.5 Mbps, BPSK)	X	4.24	66.83	16.19	0.00	150.0	± 9.6 %
		Y	4.33	66.71	16.05		150.0	
		Z	4.17	67.21	16.12		150.0	
10194-CAB	IEEE 802.11n (HT Greenfield, 39 Mbps, 16-QAM)	X	4.38	67.05	16.33	0.00	150.0	± 9.6 %
		Y	4.48	66.96	16.18		150.0	
		Z	4.29	67.37	16.25		150.0	
10195-CAB	IEEE 802.11n (HT Greenfield, 65 Mbps, 64-QAM)	X	4.41	67.06	16.34	0.00	150.0	± 9.6 %
		Y	4.51	66.98	16.20		150.0	
		Z	4.31	67.35	16.24		150.0	
10196-CAB	IEEE 802.11n (HT Mixed, 6.5 Mbps, BPSK)	X	4.22	66.81	16.17	0.00	150.0	± 9.6 %
		Y	4.32	66.72	16.04		150.0	
		Z	4.14	67.17	16.09		150.0	
10197-CAB	IEEE 802.11n (HT Mixed, 39 Mbps, 16-QAM)	X	4.38	67.05	16.33	0.00	150.0	± 9.6 %
		Y	4.48	66.96	16.19		150.0	
		Z	4.29	67.37	16.25		150.0	
10198-CAB	IEEE 802.11n (HT Mixed, 65 Mbps, 64-QAM)	X	4.40	67.05	16.34	0.00	150.0	± 9.6 %
		Y	4.51	66.98	16.20		150.0	
		Z	4.30	67.34	16.24		150.0	
10219-CAB	IEEE 802.11n (HT Mixed, 7.2 Mbps, BPSK)	X	4.18	66.86	16.15	0.00	150.0	± 9.6 %
		Y	4.27	66.75	16.01		150.0	
		Z	4.10	67.24	16.08		150.0	
10220-CAB	IEEE 802.11n (HT Mixed, 43.3 Mbps, 16-QAM)	X	4.38	67.01	16.32	0.00	150.0	± 9.6 %
		Y	4.48	66.92	16.17		150.0	
		Z	4.28	67.32	16.23		150.0	
10221-CAB	IEEE 802.11n (HT Mixed, 72.2 Mbps, 64-QAM)	X	4.42	67.00	16.33	0.00	150.0	± 9.6 %
		Y	4.52	66.92	16.19		150.0	
		Z	4.32	67.30	16.23		150.0	
10222-CAB	IEEE 802.11n (HT Mixed, 15 Mbps, BPSK)	X	4.81	67.05	16.49	0.00	150.0	± 9.6 %
		Y	4.89	67.00	16.32		150.0	
		Z	4.70	67.21	16.35		150.0	

10223-CAB	IEEE 802.11n (HT Mixed, 90 Mbps, 16-QAM)	X	5.06	67.21	16.57	0.00	150.0	± 9.6 %
		Y	5.16	67.20	16.44		150.0	
		Z	4.91	67.28	16.38		150.0	
10224-CAB	IEEE 802.11n (HT Mixed, 150 Mbps, 64-QAM)	X	4.85	67.17	16.47	0.00	150.0	± 9.6 %
		Y	4.93	67.12	16.31		150.0	
		Z	4.74	67.36	16.35		150.0	
10225-CAB	UMTS-FDD (HSPA+)	X	2.51	66.34	14.80	0.00	150.0	± 9.6 %
		Y	2.61	66.13	14.83		150.0	
		Z	2.46	66.75	14.59		150.0	
10226-CAA	LTE-TDD (SC-FDMA, 1 RB, 1.4 MHz, 16-QAM)	X	15.41	101.95	30.62	6.02	65.0	± 9.6 %
		Y	9.61	91.66	26.78		65.0	
		Z	7.80	90.47	26.24		65.0	
10227-CAA	LTE-TDD (SC-FDMA, 1 RB, 1.4 MHz, 64-QAM)	X	15.19	100.12	29.36	6.02	65.0	± 9.6 %
		Y	9.40	90.05	25.60		65.0	
		Z	7.35	88.27	24.80		65.0	
10228-CAA	LTE-TDD (SC-FDMA, 1 RB, 1.4 MHz, QPSK)	X	7.70	93.10	29.94	6.02	65.0	± 9.6 %
		Y	6.07	86.55	26.97		65.0	
		Z	4.20	82.08	25.39		65.0	
10229-CAB	LTE-TDD (SC-FDMA, 1 RB, 3 MHz, 16-QAM)	X	13.82	99.74	29.86	6.02	65.0	± 9.6 %
		Y	9.01	90.36	26.26		65.0	
		Z	7.11	88.67	25.54		65.0	
10230-CAB	LTE-TDD (SC-FDMA, 1 RB, 3 MHz, 64-QAM)	X	13.48	97.89	28.61	6.02	65.0	± 9.6 %
		Y	8.74	88.75	25.10		65.0	
		Z	6.65	86.51	24.13		65.0	
10231-CAB	LTE-TDD (SC-FDMA, 1 RB, 3 MHz, QPSK)	X	7.23	91.68	29.37	6.02	65.0	± 9.6 %
		Y	5.81	85.62	26.55		65.0	
		Z	4.00	81.04	24.89		65.0	
10232-CAD	LTE-TDD (SC-FDMA, 1 RB, 5 MHz, 16-QAM)	X	13.79	99.72	29.85	6.02	65.0	± 9.6 %
		Y	8.99	90.35	26.26		65.0	
		Z	7.09	88.64	25.54		65.0	
10233-CAD	LTE-TDD (SC-FDMA, 1 RB, 5 MHz, 64-QAM)	X	13.43	97.83	28.60	6.02	65.0	± 9.6 %
		Y	8.72	88.71	25.09		65.0	
		Z	6.62	86.46	24.12		65.0	
10234-CAD	LTE-TDD (SC-FDMA, 1 RB, 5 MHz, QPSK)	X	6.91	90.59	28.86	6.02	65.0	± 9.6 %
		Y	5.61	84.84	26.14		65.0	
		Z	3.86	80.24	24.45		65.0	
10235-CAD	LTE-TDD (SC-FDMA, 1 RB, 10 MHz, 16-QAM)	X	13.83	99.78	29.87	6.02	65.0	± 9.6 %
		Y	9.00	90.38	26.27		65.0	
		Z	7.09	88.66	25.55		65.0	
10236-CAD	LTE-TDD (SC-FDMA, 1 RB, 10 MHz, 64-QAM)	X	13.62	98.04	28.65	6.02	65.0	± 9.6 %
		Y	8.81	88.86	25.13		65.0	
		Z	6.70	86.60	24.16		65.0	
10237-CAD	LTE-TDD (SC-FDMA, 1 RB, 10 MHz, QPSK)	X	7.24	91.74	29.39	6.02	65.0	± 9.6 %
		Y	5.81	85.65	26.56		65.0	
		Z	3.99	81.03	24.90		65.0	
10238-CAD	LTE-TDD (SC-FDMA, 1 RB, 15 MHz, 16-QAM)	X	13.76	99.70	29.84	6.02	65.0	± 9.6 %
		Y	8.97	90.32	26.25		65.0	
		Z	7.07	88.61	25.52		65.0	

10239-CAD	LTE-TDD (SC-FDMA, 1 RB, 15 MHz, 64-QAM)	X	13.37	97.78	28.58	6.02	65.0	± 9.6 %
		Y	8.69	88.67	25.08		65.0	
		Z	6.59	86.40	24.10		65.0	
10240-CAD	LTE-TDD (SC-FDMA, 1 RB, 15 MHz, QPSK)	X	7.22	91.71	29.38	6.02	65.0	± 9.6 %
		Y	5.80	85.63	26.55		65.0	
		Z	3.99	81.03	24.89		65.0	
10241-CAA	LTE-TDD (SC-FDMA, 50% RB, 1.4 MHz, 16-QAM)	X	7.92	83.31	26.43	6.98	65.0	± 9.6 %
		Y	7.39	80.86	25.11		65.0	
		Z	6.39	80.34	24.81		65.0	
10242-CAA	LTE-TDD (SC-FDMA, 50% RB, 1.4 MHz, 64-QAM)	X	7.05	80.89	25.37	6.98	65.0	± 9.6 %
		Y	6.86	79.38	24.43		65.0	
		Z	5.31	76.70	23.25		65.0	
10243-CAA	LTE-TDD (SC-FDMA, 50% RB, 1.4 MHz, QPSK)	X	5.61	76.83	24.61	6.98	65.0	± 9.6 %
		Y	5.60	75.93	23.88		65.0	
		Z	4.41	73.05	22.53		65.0	
10244-CAB	LTE-TDD (SC-FDMA, 50% RB, 3 MHz, 16-QAM)	X	4.02	70.41	14.69	3.98	65.0	± 9.6 %
		Y	4.13	70.49	14.93		65.0	
		Z	2.49	65.11	11.00		65.0	
10245-CAB	LTE-TDD (SC-FDMA, 50% RB, 3 MHz, 64-QAM)	X	3.85	69.59	14.25	3.98	65.0	± 9.6 %
		Y	4.01	69.84	14.58		65.0	
		Z	2.45	64.72	10.74		65.0	
10246-CAB	LTE-TDD (SC-FDMA, 50% RB, 3 MHz, QPSK)	X	4.04	73.92	16.51	3.98	65.0	± 9.6 %
		Y	4.21	74.30	17.06		65.0	
		Z	2.46	68.40	13.32		65.0	
10247-CAD	LTE-TDD (SC-FDMA, 50% RB, 5 MHz, 16-QAM)	X	4.12	71.43	16.28	3.98	65.0	± 9.6 %
		Y	4.26	71.62	16.65		65.0	
		Z	3.07	68.30	14.10		65.0	
10248-CAD	LTE-TDD (SC-FDMA, 50% RB, 5 MHz, 64-QAM)	X	3.99	70.52	15.86	3.98	65.0	± 9.6 %
		Y	4.18	70.90	16.31		65.0	
		Z	2.99	67.51	13.71		65.0	
10249-CAD	LTE-TDD (SC-FDMA, 50% RB, 5 MHz, QPSK)	X	7.21	83.53	21.70	3.98	65.0	± 9.6 %
		Y	6.04	80.32	20.70		65.0	
		Z	4.60	77.74	18.93		65.0	
10250-CAD	LTE-TDD (SC-FDMA, 50% RB, 10 MHz, 16-QAM)	X	5.73	77.13	21.21	3.98	65.0	± 9.6 %
		Y	5.49	75.70	20.56		65.0	
		Z	4.71	74.90	19.83		65.0	
10251-CAD	LTE-TDD (SC-FDMA, 50% RB, 10 MHz, 64-QAM)	X	5.08	73.68	19.28	3.98	65.0	± 9.6 %
		Y	5.08	73.10	19.02		65.0	
		Z	4.15	71.43	17.80		65.0	
10252-CAD	LTE-TDD (SC-FDMA, 50% RB, 10 MHz, QPSK)	X	7.72	84.95	23.95	3.98	65.0	± 9.6 %
		Y	6.57	81.27	22.47		65.0	
		Z	5.73	81.18	22.23		65.0	
10253-CAD	LTE-TDD (SC-FDMA, 50% RB, 15 MHz, 16-QAM)	X	5.25	73.10	19.66	3.98	65.0	± 9.6 %
		Y	5.27	72.57	19.33		65.0	
		Z	4.44	71.27	18.45		65.0	
10254-CAD	LTE-TDD (SC-FDMA, 50% RB, 15 MHz, 64-QAM)	X	5.65	74.31	20.52	3.98	65.0	± 9.6 %
		Y	5.63	73.63	20.11		65.0	
		Z	4.81	72.54	19.36		65.0	

10255-CAD	LTE-TDD (SC-FDMA, 50% RB, 15 MHz, QPSK)	X	6.41	79.52	22.36	3.98	65.0	± 9.6 %
		Y	6.03	77.61	21.41		65.0	
		Z	5.18	77.05	21.09		65.0	
10256-CAA	LTE-TDD (SC-FDMA, 100% RB, 1.4 MHz, 16-QAM)	X	2.62	64.77	10.66	3.98	65.0	± 9.6 %
		Y	2.89	65.71	11.45		65.0	
		Z	1.74	61.55	7.76		65.0	
10257-CAA	LTE-TDD (SC-FDMA, 100% RB, 1.4 MHz, 64-QAM)	X	2.56	64.22	10.26	3.98	65.0	± 9.6 %
		Y	2.83	65.16	11.06		65.0	
		Z	1.73	61.29	7.50		65.0	
10258-CAA	LTE-TDD (SC-FDMA, 100% RB, 1.4 MHz, QPSK)	X	2.33	65.98	11.67	3.98	65.0	± 9.6 %
		Y	2.74	67.85	13.09		65.0	
		Z	1.55	62.66	9.04		65.0	
10259-CAB	LTE-TDD (SC-FDMA, 100% RB, 3 MHz, 16-QAM)	X	4.78	73.82	18.19	3.98	65.0	± 9.6 %
		Y	4.76	73.30	18.14		65.0	
		Z	3.71	70.96	16.29		65.0	
10260-CAB	LTE-TDD (SC-FDMA, 100% RB, 3 MHz, 64-QAM)	X	4.75	73.36	17.98	3.98	65.0	± 9.6 %
		Y	4.77	72.96	17.98		65.0	
		Z	3.71	70.59	16.10		65.0	
10261-CAB	LTE-TDD (SC-FDMA, 100% RB, 3 MHz, QPSK)	X	7.00	83.14	22.24	3.98	65.0	± 9.6 %
		Y	5.96	79.88	21.10		65.0	
		Z	4.89	78.58	20.00		65.0	
10262-CAD	LTE-TDD (SC-FDMA, 100% RB, 5 MHz, 16-QAM)	X	5.70	77.00	21.13	3.98	65.0	± 9.6 %
		Y	5.47	75.60	20.50		65.0	
		Z	4.68	74.76	19.75		65.0	
10263-CAD	LTE-TDD (SC-FDMA, 100% RB, 5 MHz, 64-QAM)	X	5.08	73.66	19.27	3.98	65.0	± 9.6 %
		Y	5.07	73.07	19.02		65.0	
		Z	4.15	71.42	17.80		65.0	
10264-CAD	LTE-TDD (SC-FDMA, 100% RB, 5 MHz, QPSK)	X	7.58	84.58	23.79	3.98	65.0	± 9.6 %
		Y	6.49	81.02	22.35		65.0	
		Z	5.63	80.83	22.06		65.0	
10265-CAD	LTE-TDD (SC-FDMA, 100% RB, 10 MHz, 16-QAM)	X	5.33	73.50	19.98	3.98	65.0	± 9.6 %
		Y	5.34	72.96	19.60		65.0	
		Z	4.49	71.58	18.78		65.0	
10266-CAD	LTE-TDD (SC-FDMA, 100% RB, 10 MHz, 64-QAM)	X	5.80	74.91	20.98	3.98	65.0	± 9.6 %
		Y	5.76	74.17	20.50		65.0	
		Z	4.93	73.11	19.87		65.0	
10267-CAD	LTE-TDD (SC-FDMA, 100% RB, 10 MHz, QPSK)	X	6.75	80.22	22.51	3.98	65.0	± 9.6 %
		Y	6.31	78.24	21.51		65.0	
		Z	5.45	77.78	21.30		65.0	
10268-CAD	LTE-TDD (SC-FDMA, 100% RB, 15 MHz, 16-QAM)	X	5.93	73.37	20.49	3.98	65.0	± 9.6 %
		Y	5.99	73.01	20.12		65.0	
		Z	5.16	71.83	19.50		65.0	
10269-CAD	LTE-TDD (SC-FDMA, 100% RB, 15 MHz, 64-QAM)	X	5.93	72.96	20.33	3.98	65.0	± 9.6 %
		Y	5.99	72.64	20.00		65.0	
		Z	5.19	71.51	19.38		65.0	
10270-CAD	LTE-TDD (SC-FDMA, 100% RB, 15 MHz, QPSK)	X	6.27	76.42	21.20	3.98	65.0	± 9.6 %
		Y	6.15	75.42	20.55		65.0	
		Z	5.37	74.84	20.32		65.0	

10274-CAB	UMTS-FDD (HSUPA, Subtest 5, 3GPP Rel8.10)	X	2.38	67.09	14.90	0.00	150.0	± 9.6 %
		Y	2.44	66.67	14.85		150.0	
		Z	2.34	67.57	14.77		150.0	
10275-CAB	UMTS-FDD (HSUPA, Subtest 5, 3GPP Rel8.4)	X	1.49	69.19	15.59	0.00	150.0	± 9.6 %
		Y	1.48	67.68	15.09		150.0	
		Z	1.49	69.77	15.72		150.0	
10277-CAA	PHS (QPSK)	X	2.09	60.92	6.52	9.03	50.0	± 9.6 %
		Y	1.99	60.88	6.43		50.0	
		Z	1.56	59.12	4.50		50.0	
10278-CAA	PHS (QPSK, BW 884MHz, Rolloff 0.5)	X	3.33	66.21	11.58	9.03	50.0	± 9.6 %
		Y	3.45	67.40	12.36		50.0	
		Z	2.52	63.38	9.00		50.0	
10279-CAA	PHS (QPSK, BW 884MHz, Rolloff 0.38)	X	3.39	66.39	11.72	9.03	50.0	± 9.6 %
		Y	3.53	67.62	12.52		50.0	
		Z	2.56	63.50	9.12		50.0	
10290-AAB	CDMA2000, RC1, SO55, Full Rate	X	0.61	61.53	7.60	0.00	150.0	± 9.6 %
		Y	0.95	65.07	10.75		150.0	
		Z	0.49	60.68	6.68		150.0	
10291-AAB	CDMA2000, RC3, SO55, Full Rate	X	0.35	60.00	6.15	0.00	150.0	± 9.6 %
		Y	0.58	63.25	9.58		150.0	
		Z	0.32	60.00	5.83		150.0	
10292-AAB	CDMA2000, RC3, SO32, Full Rate	X	0.39	61.31	7.18	0.00	150.0	± 9.6 %
		Y	0.79	67.34	11.99		150.0	
		Z	0.36	61.33	6.91		150.0	
10293-AAB	CDMA2000, RC3, SO3, Full Rate	X	0.70	66.46	10.24	0.00	150.0	± 9.6 %
		Y	1.84	77.49	16.58		150.0	
		Z	0.96	69.80	11.25		150.0	
10295-AAB	CDMA2000, RC1, SO3, 1/8th Rate 25 fr.	X	24.25	96.58	25.60	9.03	50.0	± 9.6 %
		Y	13.21	88.89	23.79		50.0	
		Z	17.74	90.30	22.44		50.0	
10297-AAC	LTE-FDD (SC-FDMA, 50% RB, 20 MHz, QPSK)	X	2.54	70.33	16.91	0.00	150.0	± 9.6 %
		Y	2.52	69.32	16.40		150.0	
		Z	2.48	70.69	17.00		150.0	
10298-AAC	LTE-FDD (SC-FDMA, 50% RB, 3 MHz, QPSK)	X	0.87	62.84	9.39	0.00	150.0	± 9.6 %
		Y	1.14	64.99	11.49		150.0	
		Z	0.74	62.03	8.44		150.0	
10299-AAC	LTE-FDD (SC-FDMA, 50% RB, 3 MHz, 16-QAM)	X	1.31	62.98	9.06	0.00	150.0	± 9.6 %
		Y	1.60	64.50	10.42		150.0	
		Z	0.95	60.67	6.76		150.0	
10300-AAC	LTE-FDD (SC-FDMA, 50% RB, 3 MHz, 64-QAM)	X	1.06	60.58	7.00	0.00	150.0	± 9.6 %
		Y	1.28	61.71	8.21		150.0	
		Z	0.80	59.16	5.20		150.0	
10301-AAA	IEEE 802.16e WiMAX (29:18, 5ms, 10MHz, QPSK, PUSC)	X	4.72	67.05	17.86	4.17	50.0	± 9.6 %
		Y	4.49	65.52	17.15		50.0	
		Z	4.22	65.84	16.97		50.0	
10302-AAA	IEEE 802.16e WiMAX (29:18, 5ms, 10MHz, QPSK, PUSC, 3 CTRL symbols)	X	5.04	66.76	18.08	4.96	50.0	± 9.6 %
		Y	5.00	66.22	17.91		50.0	
		Z	4.64	66.13	17.51		50.0	

10303-AAA	IEEE 802.16e WiMAX (31:15, 5ms, 10MHz, 64QAM, PUSC)	X	4.99	67.71	18.65	4.96	50.0	± 9.6 %
		Y	4.76	65.90	17.73		50.0	
		Z	4.52	66.56	17.75		50.0	
10304-AAA	IEEE 802.16e WiMAX (29:18, 5ms, 10MHz, 64QAM, PUSC)	X	4.61	66.36	17.42	4.17	50.0	± 9.6 %
		Y	4.57	65.80	17.25		50.0	
		Z	4.26	65.88	16.92		50.0	
10305-AAA	IEEE 802.16e WiMAX (31:15, 10ms, 10MHz, 64QAM, PUSC, 15 symbols)	X	5.19	72.10	20.50	6.02	35.0	± 9.6 %
		Y	4.47	68.84	19.43		35.0	
		Z	4.13	68.52	18.41		35.0	
10306-AAA	IEEE 802.16e WiMAX (29:18, 10ms, 10MHz, 64QAM, PUSC, 18 symbols)	X	5.03	69.52	19.81	6.02	35.0	± 9.6 %
		Y	4.66	67.41	19.03		35.0	
		Z	4.34	67.36	18.35		35.0	
10307-AAA	IEEE 802.16e WiMAX (29:18, 10ms, 10MHz, QPSK, PUSC, 18 symbols)	X	4.97	69.79	19.79	6.02	35.0	± 9.6 %
		Y	4.56	67.54	18.97		35.0	
		Z	4.24	67.41	18.25		35.0	
10308-AAA	IEEE 802.16e WiMAX (29:18, 10ms, 10MHz, 16QAM, PUSC)	X	5.00	70.20	20.02	6.02	35.0	± 9.6 %
		Y	4.56	67.81	19.14		35.0	
		Z	4.23	67.67	18.42		35.0	
10309-AAA	IEEE 802.16e WiMAX (29:18, 10ms, 10MHz, 16QAM, AMC 2x3, 18 symbols)	X	5.04	69.58	19.90	6.02	35.0	± 9.6 %
		Y	4.68	67.50	19.12		35.0	
		Z	4.34	67.37	18.43		35.0	
10310-AAA	IEEE 802.16e WiMAX (29:18, 10ms, 10MHz, QPSK, AMC 2x3, 18 symbols)	X	5.02	69.73	19.86	6.02	35.0	± 9.6 %
		Y	4.62	67.52	19.04		35.0	
		Z	4.31	67.48	18.38		35.0	
10311-AAC	LTE-FDD (SC-FDMA, 100% RB, 15 MHz, QPSK)	X	2.89	69.32	16.51	0.00	150.0	± 9.6 %
		Y	2.88	68.58	16.07		150.0	
		Z	2.84	69.69	16.60		150.0	
10313-AAA	iDEN 1:3	X	3.64	73.80	16.25	6.99	70.0	± 9.6 %
		Y	3.53	73.47	16.27		70.0	
		Z	2.54	70.98	14.85		70.0	
10314-AAA	iDEN 1:6	X	11.36	92.32	25.29	10.00	30.0	± 9.6 %
		Y	6.23	84.01	23.01		30.0	
		Z	14.41	96.78	26.22		30.0	
10315-AAB	IEEE 802.11b WiFi 2.4 GHz (DSSS, 1 Mbps, 96pc duty cycle)	X	0.98	64.50	15.61	0.17	150.0	± 9.6 %
		Y	1.03	63.67	14.93		150.0	
		Z	0.98	64.65	15.49		150.0	
10316-AAB	IEEE 802.11g WiFi 2.4 GHz (ERP-OFDM, 6 Mbps, 96pc duty cycle)	X	4.29	66.82	16.34	0.17	150.0	± 9.6 %
		Y	4.37	66.68	16.16		150.0	
		Z	4.17	67.03	16.16		150.0	
10317-AAB	IEEE 802.11a WiFi 5 GHz (OFDM, 6 Mbps, 96pc duty cycle)	X	4.29	66.82	16.34	0.17	150.0	± 9.6 %
		Y	4.37	66.68	16.16		150.0	
		Z	4.17	67.03	16.16		150.0	
10400-AAC	IEEE 802.11ac WiFi (20MHz, 64-QAM, 99pc duty cycle)	X	4.33	67.02	16.29	0.00	150.0	± 9.6 %
		Y	4.44	66.95	16.15		150.0	
		Z	4.21	67.24	16.15		150.0	
10401-AAC	IEEE 802.11ac WiFi (40MHz, 64-QAM, 99pc duty cycle)	X	4.99	66.73	16.28	0.00	150.0	± 9.6 %
		Y	5.10	66.79	16.18		150.0	
		Z	4.87	66.89	16.13		150.0	

10402-AAC	IEEE 802.11ac WiFi (80MHz, 64-QAM, 99pc duty cycle)	X	5.36	67.33	16.49	0.00	150.0	± 9.6 %
		Y	5.44	67.34	16.35		150.0	
		Z	5.26	67.52	16.37		150.0	
10403-AAB	CDMA2000 (1xEV-DO, Rev. 0)	X	0.61	61.53	7.60	0.00	115.0	± 9.6 %
		Y	0.95	65.07	10.75		115.0	
		Z	0.49	60.68	6.68		115.0	
10404-AAB	CDMA2000 (1xEV-DO, Rev. A)	X	0.61	61.53	7.60	0.00	115.0	± 9.6 %
		Y	0.95	65.07	10.75		115.0	
		Z	0.49	60.68	6.68		115.0	
10406-AAB	CDMA2000, RC3, SO32, SCH0, Full Rate	X	100.00	120.88	29.11	0.00	100.0	± 9.6 %
		Y	100.00	119.48	28.73		100.0	
		Z	100.00	111.63	24.58		100.0	
10410-AAC	LTE-TDD (SC-FDMA, 1 RB, 10 MHz, QPSK, UL Subframe=2,3,4,7,8,9)	X	100.00	127.51	32.08	3.23	80.0	± 9.6 %
		Y	31.82	108.36	26.95		80.0	
		Z	62.35	116.51	27.82		80.0	
10415-AAA	IEEE 802.11b WiFi 2.4 GHz (DSSS, 1 Mbps, 99pc duty cycle)	X	0.90	63.50	14.92	0.00	150.0	± 9.6 %
		Y	0.97	62.93	14.41		150.0	
		Z	0.93	63.99	15.00		150.0	
10416-AAA	IEEE 802.11g WiFi 2.4 GHz (ERP-OFDM, 6 Mbps, 99pc duty cycle)	X	4.23	66.80	16.26	0.00	150.0	± 9.6 %
		Y	4.33	66.70	16.12		150.0	
		Z	4.15	67.12	16.17		150.0	
10417-AAA	IEEE 802.11a/h WiFi 5 GHz (OFDM, 6 Mbps, 99pc duty cycle)	X	4.23	66.80	16.26	0.00	150.0	± 9.6 %
		Y	4.33	66.70	16.12		150.0	
		Z	4.15	67.12	16.17		150.0	
10418-AAA	IEEE 802.11g WiFi 2.4 GHz (DSSS-OFDM, 6 Mbps, 99pc duty cycle, Long preamble)	X	4.23	67.03	16.33	0.00	150.0	± 9.6 %
		Y	4.32	66.91	16.17		150.0	
		Z	4.14	67.37	16.26		150.0	
10419-AAA	IEEE 802.11g WiFi 2.4 GHz (DSSS-OFDM, 6 Mbps, 99pc duty cycle, Short preamble)	X	4.24	66.95	16.31	0.00	150.0	± 9.6 %
		Y	4.34	66.84	16.16		150.0	
		Z	4.16	67.28	16.23		150.0	
10422-AAA	IEEE 802.11n (HT Greenfield, 7.2 Mbps, BPSK)	X	4.35	66.91	16.32	0.00	150.0	± 9.6 %
		Y	4.45	66.82	16.17		150.0	
		Z	4.26	67.23	16.23		150.0	
10423-AAA	IEEE 802.11n (HT Greenfield, 43.3 Mbps, 16-QAM)	X	4.47	67.16	16.40	0.00	150.0	± 9.6 %
		Y	4.57	67.08	16.26		150.0	
		Z	4.36	67.46	16.30		150.0	
10424-AAA	IEEE 802.11n (HT Greenfield, 72.2 Mbps, 64-QAM)	X	4.40	67.11	16.38	0.00	150.0	± 9.6 %
		Y	4.50	67.03	16.24		150.0	
		Z	4.30	67.40	16.28		150.0	
10425-AAA	IEEE 802.11n (HT Greenfield, 15 Mbps, BPSK)	X	5.04	67.26	16.58	0.00	150.0	± 9.6 %
		Y	5.13	67.22	16.42		150.0	
		Z	4.89	67.32	16.38		150.0	
10426-AAA	IEEE 802.11n (HT Greenfield, 90 Mbps, 16-QAM)	X	5.08	67.43	16.66	0.00	150.0	± 9.6 %
		Y	5.14	67.30	16.46		150.0	
		Z	4.92	67.46	16.45		150.0	

10427-AAA	IEEE 802.11n (HT Greenfield, 150 Mbps, 64-QAM)	X	5.02	67.13	16.51	0.00	150.0	± 9.6 %
		Y	5.11	67.10	16.36		150.0	
		Z	4.90	67.29	16.36		150.0	
10430-AAB	LTE-FDD (OFDMA, 5 MHz, E-TM 3.1)	X	4.47	74.13	19.05	0.00	150.0	± 9.6 %
		Y	4.27	72.47	18.45		150.0	
		Z	5.08	77.10	19.89		150.0	
10431-AAB	LTE-FDD (OFDMA, 10 MHz, E-TM 3.1)	X	3.84	67.47	16.10	0.00	150.0	± 9.6 %
		Y	3.94	67.28	15.99		150.0	
		Z	3.74	67.83	15.98		150.0	
10432-AAB	LTE-FDD (OFDMA, 15 MHz, E-TM 3.1)	X	4.16	67.25	16.30	0.00	150.0	± 9.6 %
		Y	4.27	67.12	16.16		150.0	
		Z	4.06	67.58	16.20		150.0	
10433-AAB	LTE-FDD (OFDMA, 20 MHz, E-TM 3.1)	X	4.42	67.15	16.40	0.00	150.0	± 9.6 %
		Y	4.52	67.06	16.26		150.0	
		Z	4.32	67.45	16.31		150.0	
10434-AAA	W-CDMA (BS Test Model 1, 64 DPCH)	X	4.64	75.00	18.70	0.00	150.0	± 9.6 %
		Y	4.40	73.39	18.26		150.0	
		Z	5.41	78.17	19.50		150.0	
10435-AAC	LTE-TDD (SC-FDMA, 1 RB, 20 MHz, QPSK, UL Subframe=2,3,4,7,8,9)	X	100.00	127.19	31.93	3.23	80.0	± 9.6 %
		Y	27.78	106.36	26.40		80.0	
		Z	42.85	111.62	26.64		80.0	
10447-AAB	LTE-FDD (OFDMA, 5 MHz, E-TM 3.1, Clipping 44%)	X	3.04	67.08	14.65	0.00	150.0	± 9.6 %
		Y	3.18	67.05	14.85		150.0	
		Z	2.91	67.25	14.30		150.0	
10448-AAB	LTE-FDD (OFDMA, 10 MHz, E-TM 3.1, Clipping 44%)	X	3.71	67.27	15.98	0.00	150.0	± 9.6 %
		Y	3.81	67.07	15.86		150.0	
		Z	3.62	67.65	15.87		150.0	
10449-AAB	LTE-FDD (OFDMA, 15 MHz, E-TM 3.1, Clipping 44%)	X	4.01	67.09	16.21	0.00	150.0	± 9.6 %
		Y	4.11	66.95	16.06		150.0	
		Z	3.92	67.43	16.12		150.0	
10450-AAB	LTE-FDD (OFDMA, 20 MHz, E-TM 3.1, Clipping 44%)	X	4.22	66.93	16.26	0.00	150.0	± 9.6 %
		Y	4.32	66.84	16.11		150.0	
		Z	4.14	67.24	16.18		150.0	
10451-AAA	W-CDMA (BS Test Model 1, 64 DPCH, Clipping 44%)	X	2.79	66.50	13.63	0.00	150.0	± 9.6 %
		Y	2.98	66.79	14.09		150.0	
		Z	2.59	66.31	13.04		150.0	
10456-AAA	IEEE 802.11ac WiFi (160MHz, 64-QAM, 99pc duty cycle)	X	6.00	67.78	16.73	0.00	150.0	± 9.6 %
		Y	6.04	67.74	16.57		150.0	
		Z	6.02	68.38	16.82		150.0	
10457-AAA	UMTS-FDD (DC-HSDPA)	X	3.60	65.57	16.01	0.00	150.0	± 9.6 %
		Y	3.68	65.45	15.84		150.0	
		Z	3.57	66.00	15.95		150.0	
10458-AAA	CDMA2000 (1xEV-DO, Rev. B, 2 carriers)	X	2.28	64.00	11.72	0.00	150.0	± 9.6 %
		Y	2.41	64.11	12.28		150.0	
		Z	1.90	62.62	10.39		150.0	
10459-AAA	CDMA2000 (1xEV-DO, Rev. B, 3 carriers)	X	4.90	70.07	18.22	0.00	150.0	± 9.6 %
		Y	4.93	69.48	18.09		150.0	
		Z	5.05	71.41	18.27		150.0	

10460-AAA	UMTS-FDD (WCDMA, AMR)	X	0.94	72.42	17.37	0.00	150.0	± 9.6 %
		Y	0.82	67.88	15.60		150.0	
		Z	0.96	72.94	17.69		150.0	
10461-AAA	LTE-TDD (SC-FDMA, 1 RB, 1.4 MHz, QPSK, UL Subframe=2,3,4,7,8,9)	X	100.00	133.76	34.95	3.29	80.0	± 9.6 %
		Y	22.54	106.56	27.45		80.0	
		Z	100.00	126.80	31.21		80.0	
10462-AAA	LTE-TDD (SC-FDMA, 1 RB, 1.4 MHz, 16-QAM, UL Subframe=2,3,4,7,8,9)	X	1.53	66.28	11.09	3.23	80.0	± 9.6 %
		Y	0.98	61.72	9.01		80.0	
		Z	0.66	60.00	6.84		80.0	
10463-AAA	LTE-TDD (SC-FDMA, 1 RB, 1.4 MHz, 64-QAM, UL Subframe=2,3,4,7,8,9)	X	0.79	60.00	7.60	3.23	80.0	± 9.6 %
		Y	0.83	60.00	7.56		80.0	
		Z	0.36	55.81	3.91		80.0	
10464-AAA	LTE-TDD (SC-FDMA, 1 RB, 3 MHz, QPSK, UL Subframe=2,3,4,7,8,9)	X	100.00	130.06	33.08	3.23	80.0	± 9.6 %
		Y	13.20	97.62	24.36		80.0	
		Z	92.51	120.86	28.60		80.0	
10465-AAA	LTE-TDD (SC-FDMA, 1 RB, 3 MHz, 16-QAM, UL Subframe=2,3,4,7,8,9)	X	1.21	64.05	10.09	3.23	80.0	± 9.6 %
		Y	0.92	61.09	8.63		80.0	
		Z	0.66	60.00	6.77		80.0	
10466-AAA	LTE-TDD (SC-FDMA, 1 RB, 3 MHz, 64-QAM, UL Subframe=2,3,4,7,8,9)	X	0.79	60.00	7.55	3.23	80.0	± 9.6 %
		Y	0.83	60.00	7.52		80.0	
		Z	0.35	55.73	3.83		80.0	
10467-AAC	LTE-TDD (SC-FDMA, 1 RB, 5 MHz, QPSK, UL Subframe=2,3,4,7,8,9)	X	100.00	130.58	33.30	3.23	80.0	± 9.6 %
		Y	16.52	100.70	25.21		80.0	
		Z	100.00	122.35	29.03		80.0	
10468-AAC	LTE-TDD (SC-FDMA, 1 RB, 5 MHz, 16-QAM, UL Subframe=2,3,4,7,8,9)	X	1.29	64.72	10.40	3.23	80.0	± 9.6 %
		Y	0.94	61.28	8.75		80.0	
		Z	0.66	60.00	6.80		80.0	
10469-AAC	LTE-TDD (SC-FDMA, 1 RB, 5 MHz, 64-QAM, UL Subframe=2,3,4,7,8,9)	X	0.79	60.00	7.55	3.23	80.0	± 9.6 %
		Y	0.83	60.00	7.52		80.0	
		Z	0.35	55.73	3.83		80.0	
10470-AAC	LTE-TDD (SC-FDMA, 1 RB, 10 MHz, QPSK, UL Subframe=2,3,4,7,8,9)	X	100.00	130.62	33.31	3.23	80.0	± 9.6 %
		Y	16.78	100.92	25.26		80.0	
		Z	100.00	122.35	29.02		80.0	
10471-AAC	LTE-TDD (SC-FDMA, 1 RB, 10 MHz, 16-QAM, UL Subframe=2,3,4,7,8,9)	X	1.27	64.59	10.33	3.23	80.0	± 9.6 %
		Y	0.93	61.24	8.72		80.0	
		Z	0.66	60.00	6.79		80.0	
10472-AAC	LTE-TDD (SC-FDMA, 1 RB, 10 MHz, 64-QAM, UL Subframe=2,3,4,7,8,9)	X	0.79	60.00	7.53	3.23	80.0	± 9.6 %
		Y	0.83	60.00	7.50		80.0	
		Z	0.35	55.70	3.80		80.0	
10473-AAC	LTE-TDD (SC-FDMA, 1 RB, 15 MHz, QPSK, UL Subframe=2,3,4,7,8,9)	X	100.00	130.57	33.29	3.23	80.0	± 9.6 %
		Y	16.58	100.74	25.21		80.0	
		Z	100.00	122.30	29.00		80.0	
10474-AAC	LTE-TDD (SC-FDMA, 1 RB, 15 MHz, 16-QAM, UL Subframe=2,3,4,7,8,9)	X	1.26	64.53	10.31	3.23	80.0	± 9.6 %
		Y	0.93	61.22	8.71		80.0	
		Z	0.66	60.00	6.78		80.0	
10475-AAC	LTE-TDD (SC-FDMA, 1 RB, 15 MHz, 64-QAM, UL Subframe=2,3,4,7,8,9)	X	0.79	60.00	7.54	3.23	80.0	± 9.6 %
		Y	0.83	60.00	7.50		80.0	
		Z	0.35	55.70	3.80		80.0	

10477-AAC	LTE-TDD (SC-FDMA, 1 RB, 20 MHz, 16-QAM, UL Subframe=2,3,4,7,8,9)	X	1.20	64.02	10.06	3.23	80.0	± 9.6 %
		Y	0.91	61.06	8.60		80.0	
		Z	0.66	60.00	6.75		80.0	
10478-AAC	LTE-TDD (SC-FDMA, 1 RB, 20 MHz, 64-QAM, UL Subframe=2,3,4,7,8,9)	X	0.79	60.00	7.52	3.23	80.0	± 9.6 %
		Y	0.83	60.00	7.49		80.0	
		Z	0.35	55.68	3.77		80.0	
10479-AAA	LTE-TDD (SC-FDMA, 50% RB, 1.4 MHz, QPSK, UL Subframe=2,3,4,7,8,9)	X	100.00	126.79	33.21	3.23	80.0	± 9.6 %
		Y	10.38	91.55	23.92		80.0	
		Z	100.00	123.17	30.88		80.0	
10480-AAA	LTE-TDD (SC-FDMA, 50% RB, 1.4 MHz, 16-QAM, UL Subframe=2,3,4,7,8,9)	X	100.00	111.12	25.93	3.23	80.0	± 9.6 %
		Y	4.86	75.90	16.60		80.0	
		Z	2.50	69.40	12.93		80.0	
10481-AAA	LTE-TDD (SC-FDMA, 50% RB, 1.4 MHz, 64-QAM, UL Subframe=2,3,4,7,8,9)	X	17.33	89.29	19.94	3.23	80.0	± 9.6 %
		Y	3.20	70.44	14.16		80.0	
		Z	1.42	63.47	9.98		80.0	
10482-AAA	LTE-TDD (SC-FDMA, 50% RB, 3 MHz, QPSK, UL Subframe=2,3,4,7,8,9)	X	2.01	67.85	13.24	2.23	80.0	± 9.6 %
		Y	2.00	67.46	13.68		80.0	
		Z	1.08	62.21	9.90		80.0	
10483-AAA	LTE-TDD (SC-FDMA, 50% RB, 3 MHz, 16-QAM, UL Subframe=2,3,4,7,8,9)	X	2.20	65.59	11.72	2.23	80.0	± 9.6 %
		Y	2.17	65.07	11.85		80.0	
		Z	1.15	60.00	7.79		80.0	
10484-AAA	LTE-TDD (SC-FDMA, 50% RB, 3 MHz, 64-QAM, UL Subframe=2,3,4,7,8,9)	X	2.02	64.43	11.18	2.23	80.0	± 9.6 %
		Y	2.09	64.36	11.51		80.0	
		Z	1.17	60.00	7.77		80.0	
10485-AAC	LTE-TDD (SC-FDMA, 50% RB, 5 MHz, QPSK, UL Subframe=2,3,4,7,8,9)	X	4.53	79.22	19.45	2.23	80.0	± 9.6 %
		Y	2.84	72.10	17.06		80.0	
		Z	2.60	72.67	16.45		80.0	
10486-AAC	LTE-TDD (SC-FDMA, 50% RB, 5 MHz, 16-QAM, UL Subframe=2,3,4,7,8,9)	X	2.56	67.74	14.01	2.23	80.0	± 9.6 %
		Y	2.53	67.08	14.11		80.0	
		Z	1.74	64.04	11.62		80.0	
10487-AAC	LTE-TDD (SC-FDMA, 50% RB, 5 MHz, 64-QAM, UL Subframe=2,3,4,7,8,9)	X	2.49	67.00	13.65	2.23	80.0	± 9.6 %
		Y	2.51	66.63	13.88		80.0	
		Z	1.72	63.54	11.33		80.0	
10488-AAC	LTE-TDD (SC-FDMA, 50% RB, 10 MHz, QPSK, UL Subframe=2,3,4,7,8,9)	X	4.03	76.67	20.22	2.23	80.0	± 9.6 %
		Y	3.18	71.86	18.18		80.0	
		Z	2.98	73.13	18.53		80.0	
10489-AAC	LTE-TDD (SC-FDMA, 50% RB, 10 MHz, 16-QAM, UL Subframe=2,3,4,7,8,9)	X	3.48	70.97	17.69	2.23	80.0	± 9.6 %
		Y	3.17	68.69	16.67		80.0	
		Z	2.92	69.30	16.55		80.0	
10490-AAC	LTE-TDD (SC-FDMA, 50% RB, 10 MHz, 64-QAM, UL Subframe=2,3,4,7,8,9)	X	3.52	70.58	17.52	2.23	80.0	± 9.6 %
		Y	3.25	68.52	16.59		80.0	
		Z	2.96	68.98	16.39		80.0	
10491-AAC	LTE-TDD (SC-FDMA, 50% RB, 15 MHz, QPSK, UL Subframe=2,3,4,7,8,9)	X	3.82	73.14	19.18	2.23	80.0	± 9.6 %
		Y	3.42	70.39	17.81		80.0	
		Z	3.09	70.86	17.98		80.0	
10492-AAC	LTE-TDD (SC-FDMA, 50% RB, 15 MHz, 16-QAM, UL Subframe=2,3,4,7,8,9)	X	3.66	69.39	17.61	2.23	80.0	± 9.6 %
		Y	3.51	67.96	16.83		80.0	
		Z	3.20	68.22	16.75		80.0	

10493-AAC	LTE-TDD (SC-FDMA, 50% RB, 15 MHz, 64-QAM, UL Subframe=2,3,4,7,8,9)	X	3.70	69.16	17.50	2.23	80.0	± 9.6 %
		Y	3.57	67.83	16.77		80.0	
		Z	3.24	68.04	16.65		80.0	
10494-AAC	LTE-TDD (SC-FDMA, 50% RB, 20 MHz, QPSK, UL Subframe=2,3,4,7,8,9)	X	4.24	74.94	19.81	2.23	80.0	± 9.6 %
		Y	3.67	71.70	18.26		80.0	
		Z	3.36	72.30	18.54		80.0	
10495-AAC	LTE-TDD (SC-FDMA, 50% RB, 20 MHz, 16-QAM, UL Subframe=2,3,4,7,8,9)	X	3.69	69.69	17.88	2.23	80.0	± 9.6 %
		Y	3.54	68.22	17.04		80.0	
		Z	3.22	68.45	17.03		80.0	
10496-AAC	LTE-TDD (SC-FDMA, 50% RB, 20 MHz, 64-QAM, UL Subframe=2,3,4,7,8,9)	X	3.75	69.34	17.76	2.23	80.0	± 9.6 %
		Y	3.62	68.01	16.98		80.0	
		Z	3.30	68.22	16.94		80.0	
10497-AAA	LTE-TDD (SC-FDMA, 100% RB, 1.4 MHz, QPSK, UL Subframe=2,3,4,7,8,9)	X	0.96	60.00	7.89	2.23	80.0	± 9.6 %
		Y	1.15	61.18	9.30		80.0	
		Z	0.83	60.00	6.90		80.0	
10498-AAA	LTE-TDD (SC-FDMA, 100% RB, 1.4 MHz, 16-QAM, UL Subframe=2,3,4,7,8,9)	X	1.15	60.00	6.67	2.23	80.0	± 9.6 %
		Y	1.20	60.00	7.47		80.0	
		Z	1.06	60.00	5.55		80.0	
10499-AAA	LTE-TDD (SC-FDMA, 100% RB, 1.4 MHz, 64-QAM, UL Subframe=2,3,4,7,8,9)	X	1.17	60.00	6.51	2.23	80.0	± 9.6 %
		Y	1.22	60.00	7.31		80.0	
		Z	1.10	60.00	5.36		80.0	
10500-AAA	LTE-TDD (SC-FDMA, 100% RB, 3 MHz, QPSK, UL Subframe=2,3,4,7,8,9)	X	4.27	78.15	19.77	2.23	80.0	± 9.6 %
		Y	2.97	71.96	17.50		80.0	
		Z	2.82	73.28	17.46		80.0	
10501-AAA	LTE-TDD (SC-FDMA, 100% RB, 3 MHz, 16-QAM, UL Subframe=2,3,4,7,8,9)	X	3.13	69.97	15.82	2.23	80.0	± 9.6 %
		Y	2.87	68.14	15.28		80.0	
		Z	2.33	67.02	13.92		80.0	
10502-AAA	LTE-TDD (SC-FDMA, 100% RB, 3 MHz, 64-QAM, UL Subframe=2,3,4,7,8,9)	X	3.10	69.46	15.52	2.23	80.0	± 9.6 %
		Y	2.89	67.91	15.09		80.0	
		Z	2.32	66.58	13.62		80.0	
10503-AAC	LTE-TDD (SC-FDMA, 100% RB, 5 MHz, QPSK, UL Subframe=2,3,4,7,8,9)	X	3.94	76.31	20.06	2.23	80.0	± 9.6 %
		Y	3.14	71.64	18.07		80.0	
		Z	2.92	72.80	18.38		80.0	
10504-AAC	LTE-TDD (SC-FDMA, 100% RB, 5 MHz, 16-QAM, UL Subframe=2,3,4,7,8,9)	X	3.45	70.79	17.60	2.23	80.0	± 9.6 %
		Y	3.15	68.57	16.60		80.0	
		Z	2.89	69.12	16.44		80.0	
10505-AAC	LTE-TDD (SC-FDMA, 100% RB, 5 MHz, 64-QAM, UL Subframe=2,3,4,7,8,9)	X	3.49	70.43	17.43	2.23	80.0	± 9.6 %
		Y	3.23	68.41	16.53		80.0	
		Z	2.93	68.82	16.30		80.0	
10506-AAC	LTE-TDD (SC-FDMA, 100% RB, 10 MHz, QPSK, UL Subframe=2,3,4,7,8,9)	X	4.19	74.72	19.70	2.23	80.0	± 9.6 %
		Y	3.64	71.54	18.18		80.0	
		Z	3.32	72.09	18.43		80.0	
10507-AAC	LTE-TDD (SC-FDMA, 100% RB, 10 MHz, 16-QAM, UL Subframe=2,3,4,7,8,9)	X	3.67	69.60	17.83	2.23	80.0	± 9.6 %
		Y	3.52	68.16	17.00		80.0	
		Z	3.21	68.36	16.97		80.0	

10508-AAC	LTE-TDD (SC-FDMA, 100% RB, 10 MHz, 64-QAM, UL Subframe=2,3,4,7,8,9)	X	3.73	69.24	17.70	2.23	80.0	± 9.6 %
		Y	3.60	67.93	16.93		80.0	
		Z	3.28	68.12	16.88		80.0	
10509-AAC	LTE-TDD (SC-FDMA, 100% RB, 15 MHz, QPSK, UL Subframe=2,3,4,7,8,9)	X	4.33	72.38	18.83	2.23	80.0	± 9.6 %
		Y	4.02	70.46	17.77		80.0	
		Z	3.67	70.70	17.93		80.0	
10510-AAC	LTE-TDD (SC-FDMA, 100% RB, 15 MHz, 16-QAM, UL Subframe=2,3,4,7,8,9)	X	4.06	68.76	17.68	2.23	80.0	± 9.6 %
		Y	3.99	67.84	17.05		80.0	
		Z	3.63	67.77	16.97		80.0	
10511-AAC	LTE-TDD (SC-FDMA, 100% RB, 15 MHz, 64-QAM, UL Subframe=2,3,4,7,8,9)	X	4.12	68.51	17.60	2.23	80.0	± 9.6 %
		Y	4.06	67.66	17.00		80.0	
		Z	3.70	67.61	16.92		80.0	
10512-AAC	LTE-TDD (SC-FDMA, 100% RB, 20 MHz, QPSK, UL Subframe=2,3,4,7,8,9)	X	4.60	74.13	19.39	2.23	80.0	± 9.6 %
		Y	4.14	71.72	18.16		80.0	
		Z	3.79	72.01	18.34		80.0	
10513-AAC	LTE-TDD (SC-FDMA, 100% RB, 20 MHz, 16-QAM, UL Subframe=2,3,4,7,8,9)	X	3.97	68.97	17.79	2.23	80.0	± 9.6 %
		Y	3.88	67.99	17.12		80.0	
		Z	3.53	67.87	17.05		80.0	
10514-AAC	LTE-TDD (SC-FDMA, 100% RB, 20 MHz, 64-QAM, UL Subframe=2,3,4,7,8,9)	X	3.99	68.53	17.64	2.23	80.0	± 9.6 %
		Y	3.92	67.65	17.02		80.0	
		Z	3.57	67.54	16.93		80.0	
10515-AAA	IEEE 802.11b WiFi 2.4 GHz (DSSS, 2 Mbps, 99pc duty cycle)	X	0.86	63.76	15.01	0.00	150.0	± 9.6 %
		Y	0.93	63.09	14.45		150.0	
		Z	0.89	64.24	15.10		150.0	
10516-AAA	IEEE 802.11b WiFi 2.4 GHz (DSSS, 5.5 Mbps, 99pc duty cycle)	X	1.36	87.46	22.75	0.00	150.0	± 9.6 %
		Y	0.54	69.72	16.60		150.0	
		Z	0.87	81.18	21.47		150.0	
10517-AAA	IEEE 802.11b WiFi 2.4 GHz (DSSS, 11 Mbps, 99pc duty cycle)	X	0.73	66.61	16.01	0.00	150.0	± 9.6 %
		Y	0.76	64.78	14.94		150.0	
		Z	0.75	66.85	16.09		150.0	
10518-AAA	IEEE 802.11a/h WiFi 5 GHz (OFDM, 9 Mbps, 99pc duty cycle)	X	4.22	66.92	16.26	0.00	150.0	± 9.6 %
		Y	4.32	66.81	16.11		150.0	
		Z	4.14	67.26	16.18		150.0	
10519-AAA	IEEE 802.11a/h WiFi 5 GHz (OFDM, 12 Mbps, 99pc duty cycle)	X	4.36	67.07	16.34	0.00	150.0	± 9.6 %
		Y	4.47	66.97	16.20		150.0	
		Z	4.26	67.39	16.25		150.0	
10520-AAA	IEEE 802.11a/h WiFi 5 GHz (OFDM, 18 Mbps, 99pc duty cycle)	X	4.22	67.01	16.26	0.00	150.0	± 9.6 %
		Y	4.32	66.91	16.11		150.0	
		Z	4.13	67.32	16.17		150.0	
10521-AAA	IEEE 802.11a/h WiFi 5 GHz (OFDM, 24 Mbps, 99pc duty cycle)	X	4.15	66.96	16.24	0.00	150.0	± 9.6 %
		Y	4.26	66.88	16.09		150.0	
		Z	4.06	67.26	16.14		150.0	
10522-AAA	IEEE 802.11a/h WiFi 5 GHz (OFDM, 36 Mbps, 99pc duty cycle)	X	4.20	67.07	16.32	0.00	150.0	± 9.6 %
		Y	4.31	66.99	16.18		150.0	
		Z	4.08	67.30	16.18		150.0	

10523-AAA	IEEE 802.11a/h WiFi 5 GHz (OFDM, 48 Mbps, 99pc duty cycle)	X	4.14	67.14	16.28	0.00	150.0	± 9.6 %
		Y	4.23	67.00	16.11		150.0	
		Z	4.06	67.51	16.23		150.0	
10524-AAA	IEEE 802.11a/h WiFi 5 GHz (OFDM, 54 Mbps, 99pc duty cycle)	X	4.15	67.07	16.34	0.00	150.0	± 9.6 %
		Y	4.26	66.95	16.18		150.0	
		Z	4.06	67.37	16.24		150.0	
10525-AAA	IEEE 802.11ac WiFi (20MHz, MCS0, 99pc duty cycle)	X	4.20	66.19	15.97	0.00	150.0	± 9.6 %
		Y	4.29	66.07	15.81		150.0	
		Z	4.13	66.56	15.92		150.0	
10526-AAA	IEEE 802.11ac WiFi (20MHz, MCS1, 99pc duty cycle)	X	4.31	66.45	16.08	0.00	150.0	± 9.6 %
		Y	4.41	66.35	15.92		150.0	
		Z	4.22	66.77	16.00		150.0	
10527-AAA	IEEE 802.11ac WiFi (20MHz, MCS2, 99pc duty cycle)	X	4.25	66.43	16.02	0.00	150.0	± 9.6 %
		Y	4.34	66.31	15.86		150.0	
		Z	4.16	66.77	15.96		150.0	
10528-AAA	IEEE 802.11ac WiFi (20MHz, MCS3, 99pc duty cycle)	X	4.26	66.44	16.06	0.00	150.0	± 9.6 %
		Y	4.36	66.33	15.89		150.0	
		Z	4.17	66.77	15.98		150.0	
10529-AAA	IEEE 802.11ac WiFi (20MHz, MCS4, 99pc duty cycle)	X	4.26	66.44	16.06	0.00	150.0	± 9.6 %
		Y	4.36	66.33	15.89		150.0	
		Z	4.17	66.77	15.98		150.0	
10531-AAA	IEEE 802.11ac WiFi (20MHz, MCS6, 99pc duty cycle)	X	4.22	66.45	16.02	0.00	150.0	± 9.6 %
		Y	4.32	66.35	15.87		150.0	
		Z	4.12	66.75	15.94		150.0	
10532-AAA	IEEE 802.11ac WiFi (20MHz, MCS7, 99pc duty cycle)	X	4.11	66.31	15.96	0.00	150.0	± 9.6 %
		Y	4.21	66.22	15.80		150.0	
		Z	4.02	66.64	15.89		150.0	
10533-AAA	IEEE 802.11ac WiFi (20MHz, MCS8, 99pc duty cycle)	X	4.27	66.54	16.06	0.00	150.0	± 9.6 %
		Y	4.36	66.41	15.90		150.0	
		Z	4.17	66.88	15.99		150.0	
10534-AAA	IEEE 802.11ac WiFi (40MHz, MCS0, 99pc duty cycle)	X	4.83	66.36	16.12	0.00	150.0	± 9.6 %
		Y	4.92	66.33	15.96		150.0	
		Z	4.73	66.59	16.01		150.0	
10535-AAA	IEEE 802.11ac WiFi (40MHz, MCS1, 99pc duty cycle)	X	4.87	66.48	16.17	0.00	150.0	± 9.6 %
		Y	4.96	66.46	16.02		150.0	
		Z	4.75	66.66	16.05		150.0	
10536-AAA	IEEE 802.11ac WiFi (40MHz, MCS2, 99pc duty cycle)	X	4.76	66.48	16.15	0.00	150.0	± 9.6 %
		Y	4.85	66.46	16.00		150.0	
		Z	4.66	66.70	16.05		150.0	
10537-AAA	IEEE 802.11ac WiFi (40MHz, MCS3, 99pc duty cycle)	X	4.84	66.54	16.18	0.00	150.0	± 9.6 %
		Y	4.91	66.45	16.00		150.0	
		Z	4.73	66.74	16.07		150.0	
10538-AAA	IEEE 802.11ac WiFi (40MHz, MCS4, 99pc duty cycle)	X	4.89	66.44	16.17	0.00	150.0	± 9.6 %
		Y	4.98	66.41	16.02		150.0	
		Z	4.77	66.62	16.04		150.0	
10540-AAA	IEEE 802.11ac WiFi (40MHz, MCS6, 99pc duty cycle)	X	4.82	66.39	16.17	0.00	150.0	± 9.6 %
		Y	4.91	66.37	16.02		150.0	
		Z	4.71	66.59	16.05		150.0	

10541-AAA	IEEE 802.11ac WiFi (40MHz, MCS7, 99pc duty cycle)	X	4.81	66.32	16.11	0.00	150.0	± 9.6 %
		Y	4.89	66.29	15.96		150.0	
		Z	4.71	66.57	16.02		150.0	
10542-AAA	IEEE 802.11ac WiFi (40MHz, MCS8, 99pc duty cycle)	X	4.96	66.42	16.18	0.00	150.0	± 9.6 %
		Y	5.05	66.39	16.03		150.0	
		Z	4.85	66.63	16.06		150.0	
10543-AAA	IEEE 802.11ac WiFi (40MHz, MCS9, 99pc duty cycle)	X	5.05	66.57	16.28	0.00	150.0	± 9.6 %
		Y	5.12	66.46	16.09		150.0	
		Z	4.92	66.71	16.13		150.0	
10544-AAA	IEEE 802.11ac WiFi (80MHz, MCS0, 99pc duty cycle)	X	5.19	66.38	16.08	0.00	150.0	± 9.6 %
		Y	5.26	66.41	15.96		150.0	
		Z	5.09	66.58	15.97		150.0	
10545-AAA	IEEE 802.11ac WiFi (80MHz, MCS1, 99pc duty cycle)	X	5.38	66.91	16.31	0.00	150.0	± 9.6 %
		Y	5.43	66.83	16.13		150.0	
		Z	5.23	66.94	16.11		150.0	
10546-AAA	IEEE 802.11ac WiFi (80MHz, MCS2, 99pc duty cycle)	X	5.22	66.50	16.11	0.00	150.0	± 9.6 %
		Y	5.29	66.53	15.99		150.0	
		Z	5.11	66.68	15.99		150.0	
10547-AAA	IEEE 802.11ac WiFi (80MHz, MCS3, 99pc duty cycle)	X	5.33	66.73	16.22	0.00	150.0	± 9.6 %
		Y	5.37	66.64	16.03		150.0	
		Z	5.21	66.86	16.08		150.0	
10548-AAA	IEEE 802.11ac WiFi (80MHz, MCS4, 99pc duty cycle)	X	5.45	67.31	16.49	0.00	150.0	± 9.6 %
		Y	5.51	67.24	16.31		150.0	
		Z	5.25	67.19	16.22		150.0	
10550-AAA	IEEE 802.11ac WiFi (80MHz, MCS6, 99pc duty cycle)	X	5.32	66.85	16.30	0.00	150.0	± 9.6 %
		Y	5.35	66.71	16.09		150.0	
		Z	5.18	66.94	16.14		150.0	
10551-AAA	IEEE 802.11ac WiFi (80MHz, MCS7, 99pc duty cycle)	X	5.20	66.44	16.06	0.00	150.0	± 9.6 %
		Y	5.29	66.50	15.95		150.0	
		Z	5.09	66.62	15.94		150.0	
10552-AAA	IEEE 802.11ac WiFi (80MHz, MCS8, 99pc duty cycle)	X	5.19	66.51	16.09	0.00	150.0	± 9.6 %
		Y	5.27	66.53	15.96		150.0	
		Z	5.10	66.75	16.00		150.0	
10553-AAA	IEEE 802.11ac WiFi (80MHz, MCS9, 99pc duty cycle)	X	5.24	66.43	16.08	0.00	150.0	± 9.6 %
		Y	5.33	66.48	15.97		150.0	
		Z	5.14	66.64	15.98		150.0	
10554-AAB	IEEE 802.11ac WiFi (160MHz, MCS0, 99pc duty cycle)	X	5.62	66.70	16.16	0.00	150.0	± 9.6 %
		Y	5.68	66.74	16.03		150.0	
		Z	5.52	66.86	16.02		150.0	
10555-AAB	IEEE 802.11ac WiFi (160MHz, MCS1, 99pc duty cycle)	X	5.71	66.93	16.26	0.00	150.0	± 9.6 %
		Y	5.77	66.97	16.13		150.0	
		Z	5.58	67.01	16.08		150.0	
10556-AAB	IEEE 802.11ac WiFi (160MHz, MCS2, 99pc duty cycle)	X	5.77	67.11	16.34	0.00	150.0	± 9.6 %
		Y	5.81	67.07	16.17		150.0	
		Z	5.62	67.15	16.14		150.0	
10557-AAB	IEEE 802.11ac WiFi (160MHz, MCS3, 99pc duty cycle)	X	5.70	66.90	16.25	0.00	150.0	± 9.6 %
		Y	5.77	66.95	16.13		150.0	
		Z	5.59	67.04	16.11		150.0	

10558-AAB	IEEE 802.11ac WiFi (160MHz, MCS4, 99pc duty cycle)	X	5.69	66.90	16.26	0.00	150.0	± 9.6 %
		Y	5.78	67.01	16.18		150.0	
		Z	5.56	67.00	16.10		150.0	
10560-AAB	IEEE 802.11ac WiFi (160MHz, MCS6, 99pc duty cycle)	X	5.72	66.86	16.28	0.00	150.0	± 9.6 %
		Y	5.80	66.93	16.18		150.0	
		Z	5.60	66.99	16.14		150.0	
10561-AAB	IEEE 802.11ac WiFi (160MHz, MCS7, 99pc duty cycle)	X	5.66	66.87	16.32	0.00	150.0	± 9.6 %
		Y	5.73	66.92	16.20		150.0	
		Z	5.53	66.96	16.15		150.0	
10562-AAB	IEEE 802.11ac WiFi (160MHz, MCS8, 99pc duty cycle)	X	5.70	66.99	16.38	0.00	150.0	± 9.6 %
		Y	5.78	67.08	16.28		150.0	
		Z	5.57	67.08	16.21		150.0	
10563-AAB	IEEE 802.11ac WiFi (160MHz, MCS9, 99pc duty cycle)	X	5.83	67.06	16.38	0.00	150.0	± 9.6 %
		Y	5.88	67.05	16.23		150.0	
		Z	5.69	67.13	16.21		150.0	
10564-AAA	IEEE 802.11g WiFi 2.4 GHz (DSSS-OFDM, 9 Mbps, 99pc duty cycle)	X	4.54	66.89	16.37	0.46	150.0	± 9.6 %
		Y	4.63	66.82	16.23		150.0	
		Z	4.43	67.15	16.24		150.0	
10565-AAA	IEEE 802.11g WiFi 2.4 GHz (DSSS-OFDM, 12 Mbps, 99pc duty cycle)	X	4.73	67.33	16.71	0.46	150.0	± 9.6 %
		Y	4.83	67.24	16.56		150.0	
		Z	4.62	67.61	16.60		150.0	
10566-AAA	IEEE 802.11g WiFi 2.4 GHz (DSSS-OFDM, 18 Mbps, 99pc duty cycle)	X	4.57	67.12	16.50	0.46	150.0	± 9.6 %
		Y	4.67	67.04	16.35		150.0	
		Z	4.45	67.36	16.36		150.0	
10567-AAA	IEEE 802.11g WiFi 2.4 GHz (DSSS-OFDM, 24 Mbps, 99pc duty cycle)	X	4.61	67.61	16.94	0.46	150.0	± 9.6 %
		Y	4.71	67.49	16.76		150.0	
		Z	4.52	67.92	16.85		150.0	
10568-AAA	IEEE 802.11g WiFi 2.4 GHz (DSSS-OFDM, 36 Mbps, 99pc duty cycle)	X	4.44	66.77	16.18	0.46	150.0	± 9.6 %
		Y	4.56	66.75	16.07		150.0	
		Z	4.30	66.87	15.96		150.0	
10569-AAA	IEEE 802.11g WiFi 2.4 GHz (DSSS-OFDM, 48 Mbps, 99pc duty cycle)	X	4.62	67.93	17.13	0.46	150.0	± 9.6 %
		Y	4.70	67.74	16.91		150.0	
		Z	4.54	68.30	17.08		150.0	
10570-AAA	IEEE 802.11g WiFi 2.4 GHz (DSSS-OFDM, 54 Mbps, 99pc duty cycle)	X	4.60	67.62	16.96	0.46	150.0	± 9.6 %
		Y	4.69	67.48	16.77		150.0	
		Z	4.49	67.91	16.87		150.0	
10571-AAA	IEEE 802.11b WiFi 2.4 GHz (DSSS, 1 Mbps, 90pc duty cycle)	X	1.06	65.12	15.94	0.46	130.0	± 9.6 %
		Y	1.10	64.13	15.18		130.0	
		Z	1.03	64.76	15.54		130.0	
10572-AAA	IEEE 802.11b WiFi 2.4 GHz (DSSS, 2 Mbps, 90pc duty cycle)	X	1.08	65.91	16.43	0.46	130.0	± 9.6 %
		Y	1.12	64.69	15.54		130.0	
		Z	1.04	65.49	16.01		130.0	
10573-AAA	IEEE 802.11b WiFi 2.4 GHz (DSSS, 5.5 Mbps, 90pc duty cycle)	X	100.00	148.16	38.24	0.46	130.0	± 9.6 %
		Y	1.56	82.04	21.65		130.0	
		Z	5.25	106.01	29.47		130.0	
10574-AAA	IEEE 802.11b WiFi 2.4 GHz (DSSS, 11 Mbps, 90pc duty cycle)	X	1.42	75.83	21.21	0.46	130.0	± 9.6 %
		Y	1.20	70.29	18.45		130.0	
		Z	1.26	74.01	20.40		130.0	

10575-AAA	IEEE 802.11g WiFi 2.4 GHz (DSSS-OFDM, 6 Mbps, 90pc duty cycle)	X	4.33	66.73	16.43	0.46	130.0	± 9.6 %
		Y	4.42	66.59	16.25		130.0	
		Z	4.21	66.91	16.24		130.0	
10576-AAA	IEEE 802.11g WiFi 2.4 GHz (DSSS-OFDM, 9 Mbps, 90pc duty cycle)	X	4.37	66.97	16.54	0.46	130.0	± 9.6 %
		Y	4.45	66.81	16.35		130.0	
		Z	4.25	67.19	16.37		130.0	
10577-AAA	IEEE 802.11g WiFi 2.4 GHz (DSSS-OFDM, 12 Mbps, 90pc duty cycle)	X	4.52	67.20	16.69	0.46	130.0	± 9.6 %
		Y	4.61	67.05	16.50		130.0	
		Z	4.39	67.40	16.51		130.0	
10578-AAA	IEEE 802.11g WiFi 2.4 GHz (DSSS-OFDM, 18 Mbps, 90pc duty cycle)	X	4.44	67.39	16.83	0.46	130.0	± 9.6 %
		Y	4.52	67.21	16.62		130.0	
		Z	4.32	67.63	16.68		130.0	
10579-AAA	IEEE 802.11g WiFi 2.4 GHz (DSSS-OFDM, 24 Mbps, 90pc duty cycle)	X	4.17	66.41	15.97	0.46	130.0	± 9.6 %
		Y	4.27	66.33	15.82		130.0	
		Z	4.03	66.48	15.71		130.0	
10580-AAA	IEEE 802.11g WiFi 2.4 GHz (DSSS-OFDM, 36 Mbps, 90pc duty cycle)	X	4.20	66.45	15.97	0.46	130.0	± 9.6 %
		Y	4.30	66.37	15.83		130.0	
		Z	4.03	66.43	15.66		130.0	
10581-AAA	IEEE 802.11g WiFi 2.4 GHz (DSSS-OFDM, 48 Mbps, 90pc duty cycle)	X	4.36	67.52	16.83	0.46	130.0	± 9.6 %
		Y	4.43	67.28	16.58		130.0	
		Z	4.25	67.77	16.69		130.0	
10582-AAA	IEEE 802.11g WiFi 2.4 GHz (DSSS-OFDM, 54 Mbps, 90pc duty cycle)	X	4.09	66.15	15.71	0.46	130.0	± 9.6 %
		Y	4.19	66.07	15.58		130.0	
		Z	3.93	66.16	15.43		130.0	
10583-AAA	IEEE 802.11a/h WiFi 5 GHz (OFDM, 6 Mbps, 90pc duty cycle)	X	4.33	66.73	16.43	0.46	130.0	± 9.6 %
		Y	4.42	66.59	16.25		130.0	
		Z	4.21	66.91	16.24		130.0	
10584-AAA	IEEE 802.11a/h WiFi 5 GHz (OFDM, 9 Mbps, 90pc duty cycle)	X	4.37	66.97	16.54	0.46	130.0	± 9.6 %
		Y	4.45	66.81	16.35		130.0	
		Z	4.25	67.19	16.37		130.0	
10585-AAA	IEEE 802.11a/h WiFi 5 GHz (OFDM, 12 Mbps, 90pc duty cycle)	X	4.52	67.20	16.69	0.46	130.0	± 9.6 %
		Y	4.61	67.05	16.50		130.0	
		Z	4.39	67.40	16.51		130.0	
10586-AAA	IEEE 802.11a/h WiFi 5 GHz (OFDM, 18 Mbps, 90pc duty cycle)	X	4.44	67.39	16.83	0.46	130.0	± 9.6 %
		Y	4.52	67.21	16.62		130.0	
		Z	4.32	67.63	16.68		130.0	
10587-AAA	IEEE 802.11a/h WiFi 5 GHz (OFDM, 24 Mbps, 90pc duty cycle)	X	4.17	66.41	15.97	0.46	130.0	± 9.6 %
		Y	4.27	66.33	15.82		130.0	
		Z	4.03	66.48	15.71		130.0	
10588-AAA	IEEE 802.11a/h WiFi 5 GHz (OFDM, 36 Mbps, 90pc duty cycle)	X	4.20	66.45	15.97	0.46	130.0	± 9.6 %
		Y	4.30	66.37	15.83		130.0	
		Z	4.03	66.43	15.66		130.0	
10589-AAA	IEEE 802.11a/h WiFi 5 GHz (OFDM, 48 Mbps, 90pc duty cycle)	X	4.36	67.52	16.83	0.46	130.0	± 9.6 %
		Y	4.43	67.28	16.58		130.0	
		Z	4.25	67.77	16.69		130.0	
10590-AAA	IEEE 802.11a/h WiFi 5 GHz (OFDM, 54 Mbps, 90pc duty cycle)	X	4.09	66.15	15.71	0.46	130.0	± 9.6 %
		Y	4.19	66.07	15.58		130.0	
		Z	3.93	66.16	15.43		130.0	

10591-AAA	IEEE 802.11n (HT Mixed, 20MHz, MCS0, 90pc duty cycle)	X	4.49	66.83	16.58	0.46	130.0	± 9.6 %
		Y	4.58	66.69	16.39		130.0	
		Z	4.38	67.05	16.41		130.0	
10592-AAA	IEEE 802.11n (HT Mixed, 20MHz, MCS1, 90pc duty cycle)	X	4.60	67.11	16.70	0.46	130.0	± 9.6 %
		Y	4.70	66.98	16.51		130.0	
		Z	4.47	67.30	16.52		130.0	
10593-AAA	IEEE 802.11n (HT Mixed, 20MHz, MCS2, 90pc duty cycle)	X	4.52	66.97	16.54	0.46	130.0	± 9.6 %
		Y	4.61	66.85	16.36		130.0	
		Z	4.39	67.15	16.35		130.0	
10594-AAA	IEEE 802.11n (HT Mixed, 20MHz, MCS3, 90pc duty cycle)	X	4.58	67.18	16.73	0.46	130.0	± 9.6 %
		Y	4.67	67.04	16.54		130.0	
		Z	4.45	67.37	16.56		130.0	
10595-AAA	IEEE 802.11n (HT Mixed, 20MHz, MCS4, 90pc duty cycle)	X	4.54	67.16	16.64	0.46	130.0	± 9.6 %
		Y	4.63	67.01	16.44		130.0	
		Z	4.41	67.33	16.45		130.0	
10596-AAA	IEEE 802.11n (HT Mixed, 20MHz, MCS5, 90pc duty cycle)	X	4.47	67.10	16.62	0.46	130.0	± 9.6 %
		Y	4.56	66.97	16.43		130.0	
		Z	4.33	67.23	16.41		130.0	
10597-AAA	IEEE 802.11n (HT Mixed, 20MHz, MCS6, 90pc duty cycle)	X	4.42	66.95	16.45	0.46	130.0	± 9.6 %
		Y	4.51	66.83	16.28		130.0	
		Z	4.29	67.09	16.24		130.0	
10598-AAA	IEEE 802.11n (HT Mixed, 20MHz, MCS7, 90pc duty cycle)	X	4.43	67.26	16.77	0.46	130.0	± 9.6 %
		Y	4.51	67.10	16.57		130.0	
		Z	4.32	67.48	16.62		130.0	
10599-AAA	IEEE 802.11n (HT Mixed, 40MHz, MCS0, 90pc duty cycle)	X	5.20	67.31	16.86	0.46	130.0	± 9.6 %
		Y	5.25	67.14	16.63		130.0	
		Z	5.07	67.41	16.66		130.0	
10600-AAA	IEEE 802.11n (HT Mixed, 40MHz, MCS1, 90pc duty cycle)	X	5.32	67.75	17.05	0.46	130.0	± 9.6 %
		Y	5.35	67.47	16.76		130.0	
		Z	5.09	67.50	16.68		130.0	
10601-AAA	IEEE 802.11n (HT Mixed, 40MHz, MCS2, 90pc duty cycle)	X	5.22	67.51	16.96	0.46	130.0	± 9.6 %
		Y	5.25	67.27	16.68		130.0	
		Z	5.07	67.56	16.73		130.0	
10602-AAA	IEEE 802.11n (HT Mixed, 40MHz, MCS3, 90pc duty cycle)	X	5.29	67.46	16.84	0.46	130.0	± 9.6 %
		Y	5.35	67.29	16.61		130.0	
		Z	5.08	67.29	16.50		130.0	
10603-AAA	IEEE 802.11n (HT Mixed, 40MHz, MCS4, 90pc duty cycle)	X	5.35	67.74	17.13	0.46	130.0	± 9.6 %
		Y	5.42	67.61	16.91		130.0	
		Z	5.13	67.56	16.79		130.0	
10604-AAA	IEEE 802.11n (HT Mixed, 40MHz, MCS5, 90pc duty cycle)	X	5.20	67.21	16.84	0.46	130.0	± 9.6 %
		Y	5.30	67.25	16.71		130.0	
		Z	5.02	67.15	16.55		130.0	
10605-AAA	IEEE 802.11n (HT Mixed, 40MHz, MCS6, 90pc duty cycle)	X	5.28	67.48	16.97	0.46	130.0	± 9.6 %
		Y	5.34	67.34	16.74		130.0	
		Z	5.07	67.33	16.64		130.0	
10606-AAA	IEEE 802.11n (HT Mixed, 40MHz, MCS7, 90pc duty cycle)	X	5.08	66.97	16.56	0.46	130.0	± 9.6 %
		Y	5.12	66.78	16.32		130.0	
		Z	4.92	66.93	16.28		130.0	

10607-AAA	IEEE 802.11ac WiFi (20MHz, MCS0, 90pc duty cycle)	X	4.35	66.22	16.25	0.46	130.0	± 9.6 %
		Y	4.42	66.04	16.04		130.0	
		Z	4.24	66.46	16.10		130.0	
10608-AAA	IEEE 802.11ac WiFi (20MHz, MCS1, 90pc duty cycle)	X	4.48	66.53	16.39	0.46	130.0	± 9.6 %
		Y	4.56	66.36	16.18		130.0	
		Z	4.35	66.73	16.22		130.0	
10609-AAA	IEEE 802.11ac WiFi (20MHz, MCS2, 90pc duty cycle)	X	4.38	66.34	16.19	0.46	130.0	± 9.6 %
		Y	4.46	66.19	15.99		130.0	
		Z	4.25	66.53	16.02		130.0	
10610-AAA	IEEE 802.11ac WiFi (20MHz, MCS3, 90pc duty cycle)	X	4.43	66.55	16.39	0.46	130.0	± 9.6 %
		Y	4.51	66.37	16.17		130.0	
		Z	4.31	66.77	16.23		130.0	
10611-AAA	IEEE 802.11ac WiFi (20MHz, MCS4, 90pc duty cycle)	X	4.34	66.31	16.21	0.46	130.0	± 9.6 %
		Y	4.42	66.16	16.01		130.0	
		Z	4.21	66.50	16.03		130.0	
10612-AAA	IEEE 802.11ac WiFi (20MHz, MCS5, 90pc duty cycle)	X	4.32	66.43	16.24	0.46	130.0	± 9.6 %
		Y	4.41	66.27	16.04		130.0	
		Z	4.18	66.54	16.03		130.0	
10613-AAA	IEEE 802.11ac WiFi (20MHz, MCS6, 90pc duty cycle)	X	4.31	66.21	16.06	0.46	130.0	± 9.6 %
		Y	4.40	66.08	15.88		130.0	
		Z	4.17	66.33	15.85		130.0	
10614-AAA	IEEE 802.11ac WiFi (20MHz, MCS7, 90pc duty cycle)	X	4.30	66.52	16.37	0.46	130.0	± 9.6 %
		Y	4.38	66.35	16.16		130.0	
		Z	4.18	66.74	16.22		130.0	
10615-AAA	IEEE 802.11ac WiFi (20MHz, MCS8, 90pc duty cycle)	X	4.32	66.10	15.94	0.46	130.0	± 9.6 %
		Y	4.41	65.96	15.76		130.0	
		Z	4.18	66.24	15.73		130.0	
10616-AAA	IEEE 802.11ac WiFi (40MHz, MCS0, 90pc duty cycle)	X	4.99	66.43	16.42	0.46	130.0	± 9.6 %
		Y	5.06	66.34	16.22		130.0	
		Z	4.86	66.54	16.23		130.0	
10617-AAA	IEEE 802.11ac WiFi (40MHz, MCS1, 90pc duty cycle)	X	5.03	66.54	16.45	0.46	130.0	± 9.6 %
		Y	5.10	66.46	16.25		130.0	
		Z	4.87	66.58	16.22		130.0	
10618-AAA	IEEE 802.11ac WiFi (40MHz, MCS2, 90pc duty cycle)	X	4.94	66.60	16.49	0.46	130.0	± 9.6 %
		Y	5.02	66.54	16.31		130.0	
		Z	4.80	66.71	16.31		130.0	
10619-AAA	IEEE 802.11ac WiFi (40MHz, MCS3, 90pc duty cycle)	X	4.99	66.52	16.38	0.46	130.0	± 9.6 %
		Y	5.03	66.34	16.14		130.0	
		Z	4.83	66.55	16.15		130.0	
10620-AAA	IEEE 802.11ac WiFi (40MHz, MCS4, 90pc duty cycle)	X	5.03	66.43	16.38	0.46	130.0	± 9.6 %
		Y	5.10	66.34	16.19		130.0	
		Z	4.87	66.44	16.14		130.0	
10621-AAA	IEEE 802.11ac WiFi (40MHz, MCS5, 90pc duty cycle)	X	5.04	66.55	16.58	0.46	130.0	± 9.6 %
		Y	5.11	66.48	16.39		130.0	
		Z	4.92	66.71	16.42		130.0	
10622-AAA	IEEE 802.11ac WiFi (40MHz, MCS6, 90pc duty cycle)	X	5.03	66.66	16.63	0.46	130.0	± 9.6 %
		Y	5.10	66.57	16.42		130.0	
		Z	4.89	66.76	16.44		130.0	

10623-AAA	IEEE 802.11ac WiFi (40MHz, MCS7, 90pc duty cycle)	X	4.92	66.17	16.23	0.46	130.0	± 9.6 %
		Y	4.99	66.10	16.04		130.0	
		Z	4.79	66.29	16.04		130.0	
10624-AAA	IEEE 802.11ac WiFi (40MHz, MCS8, 90pc duty cycle)	X	5.11	66.45	16.44	0.46	130.0	± 9.6 %
		Y	5.19	66.37	16.25		130.0	
		Z	4.97	66.53	16.23		130.0	
10625-AAA	IEEE 802.11ac WiFi (40MHz, MCS9, 90pc duty cycle)	X	5.22	66.67	16.62	0.46	130.0	± 9.6 %
		Y	5.28	66.51	16.38		130.0	
		Z	5.06	66.71	16.39		130.0	
10626-AAA	IEEE 802.11ac WiFi (80MHz, MCS0, 90pc duty cycle)	X	5.33	66.38	16.34	0.46	130.0	± 9.6 %
		Y	5.39	66.36	16.17		130.0	
		Z	5.21	66.49	16.15		130.0	
10627-AAA	IEEE 802.11ac WiFi (80MHz, MCS1, 90pc duty cycle)	X	5.59	67.13	16.68	0.46	130.0	± 9.6 %
		Y	5.61	66.95	16.43		130.0	
		Z	5.40	67.02	16.39		130.0	
10628-AAA	IEEE 802.11ac WiFi (80MHz, MCS2, 90pc duty cycle)	X	5.32	66.34	16.21	0.46	130.0	± 9.6 %
		Y	5.38	66.33	16.05		130.0	
		Z	5.18	66.39	16.00		130.0	
10629-AAA	IEEE 802.11ac WiFi (80MHz, MCS3, 90pc duty cycle)	X	5.47	66.71	16.39	0.46	130.0	± 9.6 %
		Y	5.48	66.50	16.13		130.0	
		Z	5.31	66.69	16.14		130.0	
10630-AAA	IEEE 802.11ac WiFi (80MHz, MCS4, 90pc duty cycle)	X	5.68	67.55	16.82	0.46	130.0	± 9.6 %
		Y	5.71	67.40	16.59		130.0	
		Z	5.39	67.16	16.39		130.0	
10631-AAA	IEEE 802.11ac WiFi (80MHz, MCS5, 90pc duty cycle)	X	5.64	67.57	17.04	0.46	130.0	± 9.6 %
		Y	5.70	67.49	16.83		130.0	
		Z	5.46	67.53	16.79		130.0	
10632-AAA	IEEE 802.11ac WiFi (80MHz, MCS6, 90pc duty cycle)	X	5.63	67.44	16.99	0.46	130.0	± 9.6 %
		Y	5.62	67.15	16.68		130.0	
		Z	5.46	67.43	16.75		130.0	
10633-AAA	IEEE 802.11ac WiFi (80MHz, MCS7, 90pc duty cycle)	X	5.33	66.40	16.29	0.46	130.0	± 9.6 %
		Y	5.42	66.45	16.15		130.0	
		Z	5.20	66.49	16.10		130.0	
10634-AAA	IEEE 802.11ac WiFi (80MHz, MCS8, 90pc duty cycle)	X	5.37	66.64	16.46	0.46	130.0	± 9.6 %
		Y	5.44	66.63	16.29		130.0	
		Z	5.25	66.79	16.30		130.0	
10635-AAA	IEEE 802.11ac WiFi (80MHz, MCS9, 90pc duty cycle)	X	5.21	65.78	15.73	0.46	130.0	± 9.6 %
		Y	5.29	65.83	15.61		130.0	
		Z	5.07	65.82	15.50		130.0	
10636-AAB	IEEE 802.11ac WiFi (160MHz, MCS0, 90pc duty cycle)	X	5.77	66.72	16.42	0.46	130.0	± 9.6 %
		Y	5.82	66.71	16.25		130.0	
		Z	5.64	66.78	16.21		130.0	
10637-AAB	IEEE 802.11ac WiFi (160MHz, MCS1, 90pc duty cycle)	X	5.90	67.05	16.57	0.46	130.0	± 9.6 %
		Y	5.94	67.01	16.39		130.0	
		Z	5.72	66.99	16.30		130.0	
10638-AAB	IEEE 802.11ac WiFi (160MHz, MCS2, 90pc duty cycle)	X	5.93	67.14	16.59	0.46	130.0	± 9.6 %
		Y	5.96	67.07	16.40		130.0	
		Z	5.77	67.13	16.35		130.0	

10639-AAB	IEEE 802.11ac WiFi (160MHz, MCS3, 90pc duty cycle)	X	5.87	66.96	16.54	0.46	130.0	± 9.6 %
		Y	5.92	66.95	16.38		130.0	
		Z	5.72	67.01	16.33		130.0	
10640-AAB	IEEE 802.11ac WiFi (160MHz, MCS4, 90pc duty cycle)	X	5.80	66.76	16.38	0.46	130.0	± 9.6 %
		Y	5.88	66.84	16.27		130.0	
		Z	5.64	66.74	16.13		130.0	
10641-AAB	IEEE 802.11ac WiFi (160MHz, MCS5, 90pc duty cycle)	X	5.94	66.98	16.51	0.46	130.0	± 9.6 %
		Y	5.97	66.91	16.32		130.0	
		Z	5.75	66.87	16.22		130.0	
10642-AAB	IEEE 802.11ac WiFi (160MHz, MCS6, 90pc duty cycle)	X	5.94	67.12	16.76	0.46	130.0	± 9.6 %
		Y	6.00	67.14	16.61		130.0	
		Z	5.80	67.17	16.56		130.0	
10643-AAB	IEEE 802.11ac WiFi (160MHz, MCS7, 90pc duty cycle)	X	5.79	66.79	16.48	0.46	130.0	± 9.6 %
		Y	5.85	66.80	16.33		130.0	
		Z	5.62	66.75	16.21		130.0	
10644-AAB	IEEE 802.11ac WiFi (160MHz, MCS8, 90pc duty cycle)	X	5.83	66.94	16.57	0.46	130.0	± 9.6 %
		Y	5.90	67.00	16.44		130.0	
		Z	5.67	66.93	16.32		130.0	
10645-AAB	IEEE 802.11ac WiFi (160MHz, MCS9, 90pc duty cycle)	X	5.99	67.10	16.62	0.46	130.0	± 9.6 %
		Y	6.03	67.04	16.43		130.0	
		Z	5.79	66.98	16.32		130.0	
10646-AAD	LTE-TDD (SC-FDMA, 1 RB, 5 MHz, QPSK, UL Subframe=2,7)	X	10.99	100.29	34.81	9.30	60.0	± 9.6 %
		Y	9.88	96.69	33.11		60.0	
		Z	5.76	86.83	29.52		60.0	
10647-AAC	LTE-TDD (SC-FDMA, 1 RB, 20 MHz, QPSK, UL Subframe=2,7)	X	9.57	97.81	34.14	9.30	60.0	± 9.6 %
		Y	8.70	94.40	32.46		60.0	
		Z	5.05	84.45	28.75		60.0	
10648-AAA	CDMA2000 (1x Advanced)	X	0.33	60.00	5.57	0.00	150.0	± 9.6 %
		Y	0.47	61.19	7.86		150.0	
		Z	0.30	60.00	5.23		150.0	
10652-AAB	LTE-TDD (OFDMA, 5 MHz, E-TM 3.1, Clipping 44%)	X	3.46	67.89	16.64	2.23	80.0	± 9.6 %
		Y	3.39	66.82	16.12		80.0	
		Z	3.15	67.36	16.00		80.0	
10653-AAB	LTE-TDD (OFDMA, 10 MHz, E-TM 3.1, Clipping 44%)	X	3.92	66.65	16.80	2.23	80.0	± 9.6 %
		Y	3.92	66.10	16.41		80.0	
		Z	3.65	66.30	16.32		80.0	
10654-AAB	LTE-TDD (OFDMA, 15 MHz, E-TM 3.1, Clipping 44%)	X	3.93	66.16	16.82	2.23	80.0	± 9.6 %
		Y	3.94	65.72	16.45		80.0	
		Z	3.68	65.81	16.36		80.0	
10655-AAB	LTE-TDD (OFDMA, 20 MHz, E-TM 3.1, Clipping 44%)	X	4.00	66.00	16.84	2.23	80.0	± 9.6 %
		Y	4.01	65.63	16.48		80.0	
		Z	3.76	65.63	16.38		80.0	

^E Uncertainty is determined using the max. deviation from linear response applying rectangular distribution and is expressed for the square of the field value.

Appendix E – Dipole Calibration Data Sheets

Gm

**Calibration Laboratory of
Schmid & Partner
Engineering AG**
Zeughausstrasse 43, 8004 Zurich, Switzerland



S Schweizerischer Kalibrierdienst
C Service suisse d'étalonnage
S Servizio svizzero di taratura
S Swiss Calibration Service

Accredited by the Swiss Accreditation Service (SAS)

Accreditation No.: **SCS 0108**

The Swiss Accreditation Service is one of the signatories to the EA
Multilateral Agreement for the recognition of calibration certificates

Client **RF Exposure Lab**

Certificate No: **D2450V2-881_Aug15**

CALIBRATION CERTIFICATE

Object **D2450V2 - SN: 881**

Calibration procedure(s) **QA CAL-05.v9**
Calibration procedure for dipole validation kits above 700 MHz

Calibration date: **August 10, 2015**

This calibration certificate documents the traceability to national standards, which realize the physical units of measurements (SI).
The measurements and the uncertainties with confidence probability are given on the following pages and are part of the certificate.

All calibrations have been conducted in the closed laboratory facility: environment temperature (22 ± 3)°C and humidity < 70%.

Calibration Equipment used (M&TE critical for calibration)

Primary Standards	ID #	Cal Date (Certificate No.)	Scheduled Calibration
Power meter EPM-442A	GB37480704	07-Oct-14 (No. 217-02020)	Oct-15
Power sensor HP 8481A	US37292783	07-Oct-14 (No. 217-02020)	Oct-15
Power sensor HP 8481A	MY41092317	07-Oct-14 (No. 217-02021)	Oct-15
Reference 20 dB Attenuator	SN: 5058 (20k)	01-Apr-15 (No. 217-02131)	Mar-16
Type-N mismatch combination	SN: 5047.2 / 06327	01-Apr-15 (No. 217-02134)	Mar-16
Reference Probe ES3DV3	SN: 3205	30-Dec-14 (No. ES3-3205_Dec14)	Dec-15
DAE4	SN: 601	18-Aug-14 (No. DAE4-601_Aug14)	Aug-15
Secondary Standards	ID #	Check Date (in house)	Scheduled Check
RF generator R&S SMT-06	100005	04-Aug-99 (in house check Oct-13)	In house check: Oct-16
Network Analyzer HP 8753E	US37390585 S4206	18-Oct-01 (in house check Oct-14)	In house check: Oct-15

Calibrated by: **Name** **Michael Weber** **Function** **Laboratory Technician**

Signature

M Weber

Approved by: **Katja Pokovic** **Technical Manager**

Katja Pokovic

Issued: August 12, 2015

This calibration certificate shall not be reproduced except in full without written approval of the laboratory.



Accredited by the Swiss Accreditation Service (SAS)

The Swiss Accreditation Service is one of the signatories to the EA
Multilateral Agreement for the recognition of calibration certificates

Accreditation No.: **SCS 0108**

Glossary:

TSL	tissue simulating liquid
ConvF	sensitivity in TSL / NORM x,y,z
N/A	not applicable or not measured

Calibration is Performed According to the Following Standards:

- IEEE Std 1528-2013, "IEEE Recommended Practice for Determining the Peak Spatial-Averaged Specific Absorption Rate (SAR) in the Human Head from Wireless Communications Devices: Measurement Techniques", June 2013
- IEC 62209-1, "Procedure to measure the Specific Absorption Rate (SAR) for hand-held devices used in close proximity to the ear (frequency range of 300 MHz to 3 GHz)", February 2005
- IEC 62209-2, "Procedure to determine the Specific Absorption Rate (SAR) for wireless communication devices used in close proximity to the human body (frequency range of 30 MHz to 6 GHz)", March 2010
- KDB 865664, "SAR Measurement Requirements for 100 MHz to 6 GHz"

Additional Documentation:

- DASY4/5 System Handbook

Methods Applied and Interpretation of Parameters:

- Measurement Conditions:** Further details are available from the Validation Report at the end of the certificate. All figures stated in the certificate are valid at the frequency indicated.
- Antenna Parameters with TSL:** The dipole is mounted with the spacer to position its feed point exactly below the center marking of the flat phantom section, with the arms oriented parallel to the body axis.
- Feed Point Impedance and Return Loss:** These parameters are measured with the dipole positioned under the liquid filled phantom. The impedance stated is transformed from the measurement at the SMA connector to the feed point. The Return Loss ensures low reflected power. No uncertainty required.
- Electrical Delay:** One-way delay between the SMA connector and the antenna feed point. No uncertainty required.
- SAR measured:** SAR measured at the stated antenna input power.
- SAR normalized:** SAR as measured, normalized to an input power of 1 W at the antenna connector.
- SAR for nominal TSL parameters:** The measured TSL parameters are used to calculate the nominal SAR result.

The reported uncertainty of measurement is stated as the standard uncertainty of measurement multiplied by the coverage factor $k=2$, which for a normal distribution corresponds to a coverage probability of approximately 95%.

Measurement Conditions

DASY system configuration, as far as not given on page 1.

DASY Version	DASY5	V52.8.8
Extrapolation	Advanced Extrapolation	
Phantom	Modular Flat Phantom	
Distance Dipole Center - TSL	10 mm	with Spacer
Zoom Scan Resolution	dx, dy, dz = 5 mm	
Frequency	2450 MHz \pm 1 MHz	

Head TSL parameters

The following parameters and calculations were applied.

	Temperature	Permittivity	Conductivity
Nominal Head TSL parameters	22.0 °C	39.2	1.80 mho/m
Measured Head TSL parameters	(22.0 \pm 0.2) °C	38.1 \pm 6 %	1.87 mho/m \pm 6 %
Head TSL temperature change during test	< 0.5 °C	----	----

SAR result with Head TSL

SAR averaged over 1 cm³ (1 g) of Head TSL	Condition	
SAR measured	250 mW input power	13.7 W/kg
SAR for nominal Head TSL parameters	normalized to 1W	53.5 W/kg \pm 17.0 % (k=2)

SAR averaged over 10 cm³ (10 g) of Head TSL	condition	
SAR measured	250 mW input power	6.43 W/kg
SAR for nominal Head TSL parameters	normalized to 1W	25.4 W/kg \pm 16.5 % (k=2)

Body TSL parameters

The following parameters and calculations were applied.

	Temperature	Permittivity	Conductivity
Nominal Body TSL parameters	22.0 °C	52.7	1.95 mho/m
Measured Body TSL parameters	(22.0 \pm 0.2) °C	50.6 \pm 6 %	2.03 mho/m \pm 6 %
Body TSL temperature change during test	< 0.5 °C	----	----

SAR result with Body TSL

SAR averaged over 1 cm³ (1 g) of Body TSL	Condition	
SAR measured	250 mW input power	13.4 W/kg
SAR for nominal Body TSL parameters	normalized to 1W	52.1 W/kg \pm 17.0 % (k=2)

SAR averaged over 10 cm³ (10 g) of Body TSL	condition	
SAR measured	250 mW input power	6.27 W/kg
SAR for nominal Body TSL parameters	normalized to 1W	24.7 W/kg \pm 16.5 % (k=2)

Appendix (Additional assessments outside the scope of SCS 0108)

Antenna Parameters with Head TSL

Impedance, transformed to feed point	$54.5 \Omega + 2.4 j\Omega$
Return Loss	- 26.2 dB

Antenna Parameters with Body TSL

Impedance, transformed to feed point	$50.9 \Omega + 4.4 j\Omega$
Return Loss	- 27.0 dB

General Antenna Parameters and Design

Electrical Delay (one direction)	1.154 ns
----------------------------------	----------

After long term use with 100W radiated power, only a slight warming of the dipole near the feedpoint can be measured.

The dipole is made of standard semirigid coaxial cable. The center conductor of the feeding line is directly connected to the second arm of the dipole. The antenna is therefore short-circuited for DC-signals. On some of the dipoles, small end caps are added to the dipole arms in order to improve matching when loaded according to the position as explained in the "Measurement Conditions" paragraph. The SAR data are not affected by this change. The overall dipole length is still according to the Standard.

No excessive force must be applied to the dipole arms, because they might bend or the soldered connections near the feedpoint may be damaged.

Additional EUT Data

Manufactured by	SPEAG
Manufactured on	August 18, 2010

Extended Calibration

Usage of SAR dipoles calibrated less than 3 years ago but more than 1 year ago were confirmed in maintaining return loss (< -20 dB, within 20% of prior calibration) and impedance (within 5 ohm from prior calibration) requirements per extended calibrations in KDB Publication 865664 D01 v01r04.

D2450V2 SN: 881 - Head						
Date of Measurement	Return Loss (dB)	$\Delta\%$	Impedance Real (Ω)	$\Delta\Omega$	Impedance Imaginary ($j\Omega$)	$\Delta\Omega$
8/10/2015	-26.2		54.5		2.4	
8/9/2016	-25.4	-3.1	52.8	-1.7	2.9	0.5
8/10/2017	-26.8	2.3	53.4	-1.1	2.6	0.2

D2450V2 SN: 881 - Body						
Date of Measurement	Return Loss (dB)	$\Delta\%$	Impedance Real (Ω)	$\Delta\Omega$	Impedance Imaginary ($j\Omega$)	$\Delta\Omega$
8/10/2015	-27.0		50.9		4.4	
8/9/2016	-27.5	1.9	51.6	0.7	5.2	0.8
8/10/2017	-26.4	-2.2	50.2	-0.7	4.9	0.5

DASY5 Validation Report for Head TSL

Date: 10.08.2015

Test Laboratory: SPEAG, Zurich, Switzerland

DUT: Dipole 2450 MHz; Type: D2450V2; Serial: D2450V2 - SN: 881

Communication System: UID 0 - CW; Frequency: 2450 MHz

Medium parameters used: $f = 2450$ MHz; $\sigma = 1.87$ S/m; $\epsilon_r = 38.1$; $\rho = 1000$ kg/m³

Phantom section: Flat Section

Measurement Standard: DASY5 (IEEE/IEC/ANSI C63.19-2011)

DASY52 Configuration:

- Probe: ES3DV3 - SN3205; ConvF(4.54, 4.54, 4.54); Calibrated: 30.12.2014;
- Sensor-Surface: 3mm (Mechanical Surface Detection)
- Electronics: DAE4 Sn601; Calibrated: 18.08.2014
- Phantom: Flat Phantom 5.0 (front); Type: QD000P50AA; Serial: 1001
- DASY52 52.8.8(1222); SEMCAD X 14.6.10(7331)

Dipole Calibration for Head Tissue/Pin=250 mW, d=10mm/Zoom Scan (7x7x7)/Cube 0:

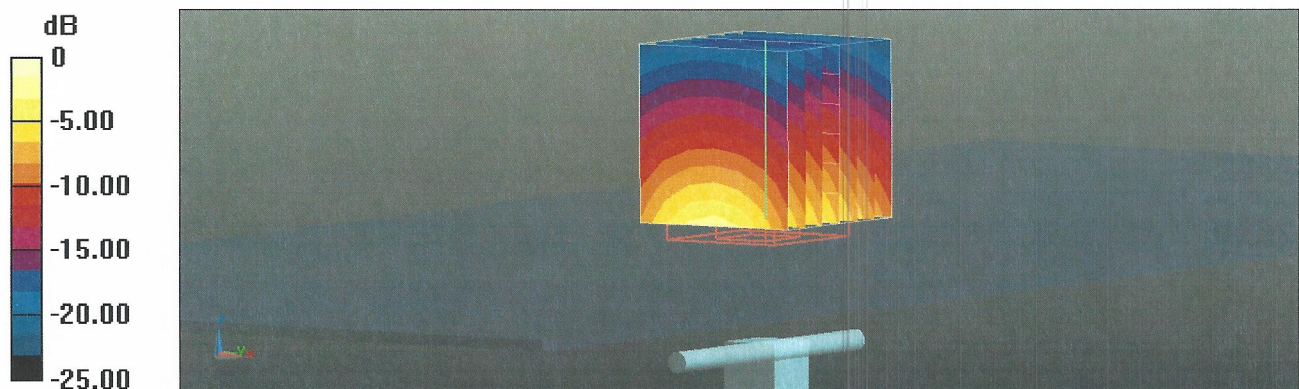
Measurement grid: dx=5mm, dy=5mm, dz=5mm

Reference Value = 101.8 V/m; Power Drift = 0.02 dB

Peak SAR (extrapolated) = 28.0 W/kg

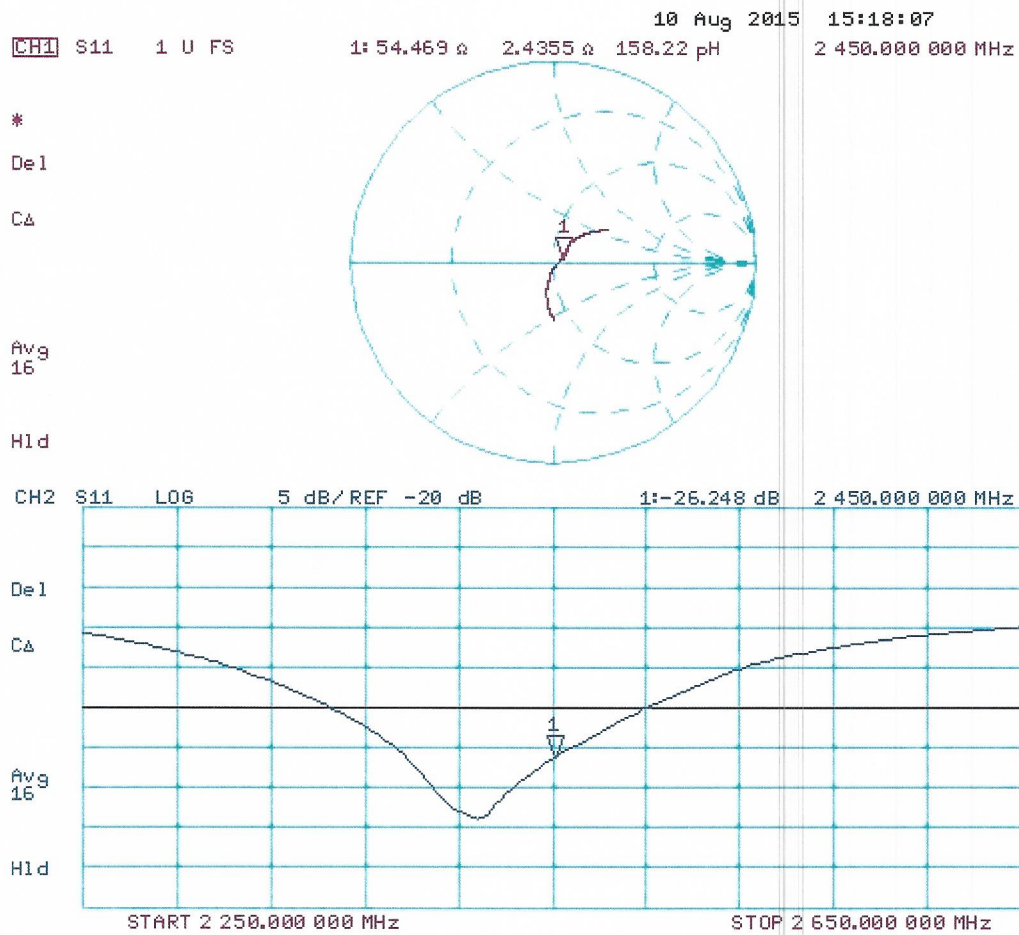
SAR(1 g) = 13.7 W/kg; SAR(10 g) = 6.43 W/kg

Maximum value of SAR (measured) = 18.1 W/kg



0 dB = 18.1 W/kg = 12.58 dBW/kg

Impedance Measurement Plot for Head TSL



DASY5 Validation Report for Body TSL

Date: 10.08.2015

Test Laboratory: SPEAG, Zurich, Switzerland

DUT: Dipole 2450 MHz; Type: D2450V2; Serial: D2450V2 - SN: 881

Communication System: UID 0 - CW; Frequency: 2450 MHz

Medium parameters used: $f = 2450$ MHz; $\sigma = 2.03$ S/m; $\epsilon_r = 50.6$; $\rho = 1000$ kg/m³

Phantom section: Flat Section

Measurement Standard: DASY5 (IEEE/IEC/ANSI C63.19-2011)

DASY52 Configuration:

- Probe: ES3DV3 - SN3205; ConvF(4.32, 4.32, 4.32); Calibrated: 30.12.2014;
- Sensor-Surface: 3mm (Mechanical Surface Detection)
- Electronics: DAE4 Sn601; Calibrated: 18.08.2014
- Phantom: Flat Phantom 5.0 (back); Type: QD000P50AA; Serial: 1002
- DASY52 52.8.8(1222); SEMCAD X 14.6.10(7331)

Dipole Calibration for Body Tissue/Pin=250 mW, d=10mm/Zoom Scan (7x7x7)/Cube 0:

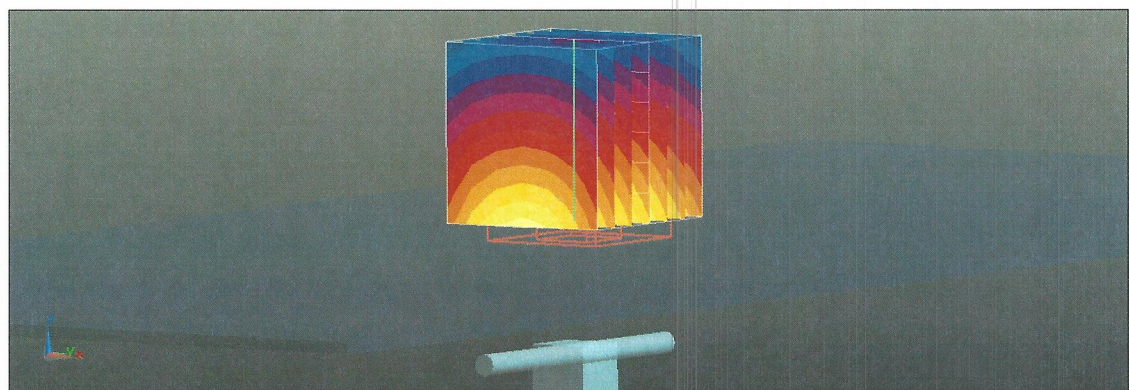
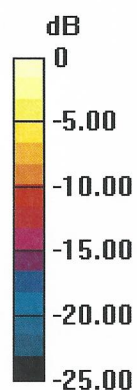
Measurement grid: dx=5mm, dy=5mm, dz=5mm

Reference Value = 96.26 V/m; Power Drift = -0.05 dB

Peak SAR (extrapolated) = 27.7 W/kg

SAR(1 g) = 13.4 W/kg; SAR(10 g) = 6.27 W/kg

Maximum value of SAR (measured) = 17.7 W/kg



0 dB = 17.7 W/kg = 12.48 dBW/kg

Impedance Measurement Plot for Body TSL

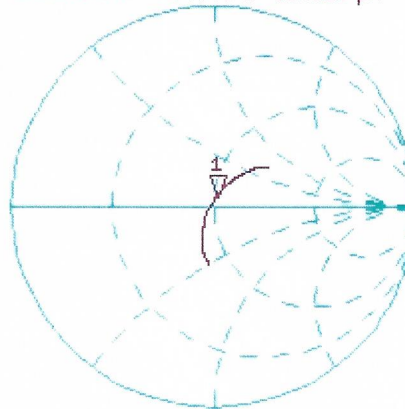
10 Aug 2015 15:17:39
CH1 S11 1 U FS 1: 50.879 Ω 4.4199 Ω 287.12 μH 2 450.000 000 MHz

*
De1

CA

Avg
16

H1d



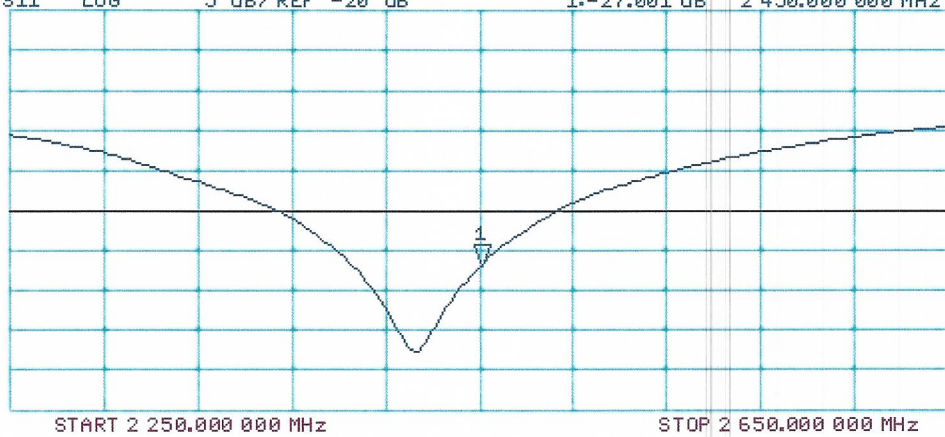
CH2 S11 LOG 5 dB/REF -20 dB 1:-27.001 dB 2 450.000 000 MHz

De1

CA

Avg
16

H1d



gm

**Calibration Laboratory of
Schmid & Partner
Engineering AG**
Zeughausstrasse 43, 8004 Zurich, Switzerland



S Schweizerischer Kalibrierdienst
C Service suisse d'étalonnage
S Servizio svizzero di taratura
S Swiss Calibration Service

Accredited by the Swiss Accreditation Service (SAS)
The Swiss Accreditation Service is one of the signatories to the EA
Multilateral Agreement for the recognition of calibration certificates

Accreditation No.: **SCS 0108**

Client **RF Exposure Lab**

Certificate No: **D5GHzV2-1119_Aug15**

CALIBRATION CERTIFICATE

Object **D5GHzV2 - SN: 1119**

Calibration procedure(s) **QA CAL-22.v2**
Calibration procedure for dipole validation kits between 3-6 GHz

Calibration date: **August 11, 2015**

This calibration certificate documents the traceability to national standards, which realize the physical units of measurements (SI).
The measurements and the uncertainties with confidence probability are given on the following pages and are part of the certificate.

All calibrations have been conducted in the closed laboratory facility: environment temperature (22 ± 3)°C and humidity < 70%.

Calibration Equipment used (M&TE critical for calibration)

Primary Standards	ID #	Cal Date (Certificate No.)	Scheduled Calibration
Power meter EPM-442A	GB37480704	07-Oct-14 (No. 217-02020)	Oct-15
Power sensor HP 8481A	US37292783	07-Oct-14 (No. 217-02020)	Oct-15
Power sensor HP 8481A	MY41092317	07-Oct-14 (No. 217-02021)	Oct-15
Reference 20 dB Attenuator	SN: 5058 (20k)	01-Apr-15 (No. 217-02131)	Mar-16
Type-N mismatch combination	SN: 5047.2 / 06327	01-Apr-15 (No. 217-02134)	Mar-16
Reference Probe EX3DV4	SN: 3503	30-Dec-14 (No. EX3-3503_Dec14)	Dec-15
DAE4	SN: 601	18-Aug-14 (No. DAE4-601_Aug14)	Aug-15
Secondary Standards	ID #	Check Date (in house)	Scheduled Check
RF generator R&S SMT-06	100005	04-Aug-99 (in house check Oct-13)	In house check: Oct-16
Network Analyzer HP 8753E	US37390585 S4206	18-Oct-01 (in house check Oct-14)	In house check: Oct-15

Calibrated by: **Name**
Israe Elnaouq **Function**
Laboratory Technician

Approved by: **Katja Pokovic** **Technical Manager**

Signature
Israe Elnaouq
Katja Pokovic

Issued: August 11, 2015

This calibration certificate shall not be reproduced except in full without written approval of the laboratory.



Accredited by the Swiss Accreditation Service (SAS)
The Swiss Accreditation Service is one of the signatories to the EA
Multilateral Agreement for the recognition of calibration certificates

Accreditation No.: **SCS 0108**

Glossary:

TSL	tissue simulating liquid
ConvF	sensitivity in TSL / NORM x,y,z
N/A	not applicable or not measured

Calibration is Performed According to the Following Standards:

- a) IEEE Std 1528-2013, "IEEE Recommended Practice for Determining the Peak Spatial-Averaged Specific Absorption Rate (SAR) in the Human Head from Wireless Communications Devices: Measurement Techniques", June 2013
- b) IEC 62209-2, "Procedure to determine the Specific Absorption Rate (SAR) for wireless communication devices used in close proximity to the human body (frequency range of 30 MHz to 6 GHz)", March 2010
- c) KDB 865664, "SAR Measurement Requirements for 100 MHz to 6 GHz"

Additional Documentation:

- d) DASY4/5 System Handbook

Methods Applied and Interpretation of Parameters:

- *Measurement Conditions:* Further details are available from the Validation Report at the end of the certificate. All figures stated in the certificate are valid at the frequency indicated.
- *Antenna Parameters with TSL:* The dipole is mounted with the spacer to position its feed point exactly below the center marking of the flat phantom section, with the arms oriented parallel to the body axis.
- *Feed Point Impedance and Return Loss:* These parameters are measured with the dipole positioned under the liquid filled phantom. The impedance stated is transformed from the measurement at the SMA connector to the feed point. The Return Loss ensures low reflected power. No uncertainty required.
- *Electrical Delay:* One-way delay between the SMA connector and the antenna feed point. No uncertainty required.
- *SAR measured:* SAR measured at the stated antenna input power.
- *SAR normalized:* SAR as measured, normalized to an input power of 1 W at the antenna connector.
- *SAR for nominal TSL parameters:* The measured TSL parameters are used to calculate the nominal SAR result.

The reported uncertainty of measurement is stated as the standard uncertainty of measurement multiplied by the coverage factor $k=2$, which for a normal distribution corresponds to a coverage probability of approximately 95%.

Measurement Conditions

DASY system configuration, as far as not given on page 1.

DASY Version	DASY5	V52.8.8
Extrapolation	Advanced Extrapolation	
Phantom	Modular Flat Phantom V5.0	
Distance Dipole Center - TSL	10 mm	with Spacer
Zoom Scan Resolution	dx, dy = 4.0 mm, dz = 1.4 mm	Graded Ratio = 1.4 (Z direction)
Frequency	5200 MHz ± 1 MHz 5300 MHz ± 1 MHz 5500 MHz ± 1 MHz 5600 MHz ± 1 MHz 5800 MHz ± 1 MHz	

Head TSL parameters at 5200 MHz

The following parameters and calculations were applied.

	Temperature	Permittivity	Conductivity
Nominal Head TSL parameters	22.0 °C	36.0	4.66 mho/m
Measured Head TSL parameters	(22.0 ± 0.2) °C	35.5 ± 6 %	4.53 mho/m ± 6 %
Head TSL temperature change during test	< 0.5 °C	----	----

SAR result with Head TSL at 5200 MHz

SAR averaged over 1 cm³ (1 g) of Head TSL	Condition	
SAR measured	100 mW input power	8.11 W/kg
SAR for nominal Head TSL parameters	normalized to 1W	80.8 W/kg ± 19.9 % (k=2)

SAR averaged over 10 cm³ (10 g) of Head TSL	condition	
SAR measured	100 mW input power	2.32 W/kg
SAR for nominal Head TSL parameters	normalized to 1W	23.1 W/kg ± 19.5 % (k=2)

Head TSL parameters at 5300 MHz

The following parameters and calculations were applied.

	Temperature	Permittivity	Conductivity
Nominal Head TSL parameters	22.0 °C	35.9	4.76 mho/m
Measured Head TSL parameters	(22.0 ± 0.2) °C	35.4 ± 6 %	4.63 mho/m ± 6 %
Head TSL temperature change during test	< 0.5 °C	----	----

SAR result with Head TSL at 5300 MHz

SAR averaged over 1 cm³ (1 g) of Head TSL	Condition	
SAR measured	100 mW input power	8.46 W/kg
SAR for nominal Head TSL parameters	normalized to 1W	84.3 W / kg ± 19.9 % (k=2)

SAR averaged over 10 cm³ (10 g) of Head TSL	condition	
SAR measured	100 mW input power	2.42 W/kg
SAR for nominal Head TSL parameters	normalized to 1W	24.1 W/kg ± 19.5 % (k=2)

Head TSL parameters at 5500 MHz

The following parameters and calculations were applied.

	Temperature	Permittivity	Conductivity
Nominal Head TSL parameters	22.0 °C	35.6	4.96 mho/m
Measured Head TSL parameters	(22.0 ± 0.2) °C	35.1 ± 6 %	4.82 mho/m ± 6 %
Head TSL temperature change during test	< 0.5 °C	----	----

SAR result with Head TSL at 5500 MHz

SAR averaged over 1 cm³ (1 g) of Head TSL	Condition	
SAR measured	100 mW input power	8.50 W/kg
SAR for nominal Head TSL parameters	normalized to 1W	84.6 W/kg ± 19.9 % (k=2)

SAR averaged over 10 cm³ (10 g) of Head TSL	condition	
SAR measured	100 mW input power	2.42 W/kg
SAR for nominal Head TSL parameters	normalized to 1W	24.1 W/kg ± 19.5 % (k=2)

Head TSL parameters at 5600 MHz

The following parameters and calculations were applied.

	Temperature	Permittivity	Conductivity
Nominal Head TSL parameters	22.0 °C	35.5	5.07 mho/m
Measured Head TSL parameters	(22.0 ± 0.2) °C	34.9 ± 6 %	4.93 mho/m ± 6 %
Head TSL temperature change during test	< 0.5 °C	----	----

SAR result with Head TSL at 5600 MHz

SAR averaged over 1 cm ³ (1 g) of Head TSL	Condition	
SAR measured	100 mW input power	8.46 W/kg
SAR for nominal Head TSL parameters	normalized to 1W	84.2 W/kg ± 19.9 % (k=2)

SAR averaged over 10 cm ³ (10 g) of Head TSL	condition	
SAR measured	100 mW input power	2.41 W/kg
SAR for nominal Head TSL parameters	normalized to 1W	24.0 W/kg ± 19.5 % (k=2)

Head TSL parameters at 5800 MHz

The following parameters and calculations were applied.

	Temperature	Permittivity	Conductivity
Nominal Head TSL parameters	22.0 °C	35.3	5.27 mho/m
Measured Head TSL parameters	(22.0 ± 0.2) °C	34.7 ± 6 %	5.14 mho/m ± 6 %
Head TSL temperature change during test	< 0.5 °C	----	----

SAR result with Head TSL at 5800 MHz

SAR averaged over 1 cm ³ (1 g) of Head TSL	Condition	
SAR measured	100 mW input power	8.10 W/kg
SAR for nominal Head TSL parameters	normalized to 1W	80.6 W/kg ± 19.9 % (k=2)

SAR averaged over 10 cm ³ (10 g) of Head TSL	condition	
SAR measured	100 mW input power	2.31 W/kg
SAR for nominal Head TSL parameters	normalized to 1W	23.0 W/kg ± 19.5 % (k=2)

Body TSL parameters at 5200 MHz

The following parameters and calculations were applied.

	Temperature	Permittivity	Conductivity
Nominal Body TSL parameters	22.0 °C	49.0	5.30 mho/m
Measured Body TSL parameters	(22.0 ± 0.2) °C	47.9 ± 6 %	5.43 mho/m ± 6 %
Body TSL temperature change during test	< 0.5 °C	----	----

SAR result with Body TSL at 5200 MHz

SAR averaged over 1 cm³ (1 g) of Body TSL	Condition	
SAR measured	100 mW input power	7.77 W/kg
SAR for nominal Body TSL parameters	normalized to 1W	77.4 W/kg ± 19.9 % (k=2)

SAR averaged over 10 cm³ (10 g) of Body TSL	condition	
SAR measured	100 mW input power	2.17 W/kg
SAR for nominal Body TSL parameters	normalized to 1W	21.6 W/kg ± 19.5 % (k=2)

Body TSL parameters at 5300 MHz

The following parameters and calculations were applied.

	Temperature	Permittivity	Conductivity
Nominal Body TSL parameters	22.0 °C	48.9	5.42 mho/m
Measured Body TSL parameters	(22.0 ± 0.2) °C	47.7 ± 6 %	5.56 mho/m ± 6 %
Body TSL temperature change during test	< 0.5 °C	----	----

SAR result with Body TSL at 5300 MHz

SAR averaged over 1 cm³ (1 g) of Body TSL	Condition	
SAR measured	100 mW input power	7.79 W/kg
SAR for nominal Body TSL parameters	normalized to 1W	77.6 W/kg ± 19.9 % (k=2)

SAR averaged over 10 cm³ (10 g) of Body TSL	condition	
SAR measured	100 mW input power	2.17 W/kg
SAR for nominal Body TSL parameters	normalized to 1W	21.6 W/kg ± 19.5 % (k=2)

Body TSL parameters at 5500 MHz

The following parameters and calculations were applied.

	Temperature	Permittivity	Conductivity
Nominal Body TSL parameters	22.0 °C	48.6	5.65 mho/m
Measured Body TSL parameters	(22.0 ± 0.2) °C	47.3 ± 6 %	5.82 mho/m ± 6 %
Body TSL temperature change during test	< 0.5 °C	----	----

SAR result with Body TSL at 5500 MHz

SAR averaged over 1 cm³ (1 g) of Body TSL	Condition	
SAR measured	100 mW input power	8.30 W/kg
SAR for nominal Body TSL parameters	normalized to 1W	82.6 W/kg ± 19.9 % (k=2)

SAR averaged over 10 cm³ (10 g) of Body TSL	condition	
SAR measured	100 mW input power	2.30 W/kg
SAR for nominal Body TSL parameters	normalized to 1W	22.9 W/kg ± 19.5 % (k=2)

Body TSL parameters at 5600 MHz

The following parameters and calculations were applied.

	Temperature	Permittivity	Conductivity
Nominal Body TSL parameters	22.0 °C	48.5	5.77 mho/m
Measured Body TSL parameters	(22.0 ± 0.2) °C	47.2 ± 6 %	5.95 mho/m ± 6 %
Body TSL temperature change during test	< 0.5 °C	----	----

SAR result with Body TSL at 5600 MHz

SAR averaged over 1 cm³ (1 g) of Body TSL	Condition	
SAR measured	100 mW input power	8.10 W/kg
SAR for nominal Body TSL parameters	normalized to 1W	80.7 W/kg ± 19.9 % (k=2)

SAR averaged over 10 cm³ (10 g) of Body TSL	condition	
SAR measured	100 mW input power	2.25 W/kg
SAR for nominal Body TSL parameters	normalized to 1W	22.4 W/kg ± 19.5 % (k=2)

Body TSL parameters at 5800 MHz

The following parameters and calculations were applied.

	Temperature	Permittivity	Conductivity
Nominal Body TSL parameters	22.0 °C	48.2	6.00 mho/m
Measured Body TSL parameters	(22.0 ± 0.2) °C	46.9 ± 6 %	6.23 mho/m ± 6 %
Body TSL temperature change during test	< 0.5 °C	----	----

SAR result with Body TSL at 5800 MHz

SAR averaged over 1 cm ³ (1 g) of Body TSL	Condition	
SAR measured	100 mW input power	7.91 W/kg
SAR for nominal Body TSL parameters	normalized to 1W	78.8 W/kg ± 19.9 % (k=2)

SAR averaged over 10 cm ³ (10 g) of Body TSL	condition	
SAR measured	100 mW input power	2.19 W/kg
SAR for nominal Body TSL parameters	normalized to 1W	21.8 W/kg ± 19.5 % (k=2)

Extended Calibration

Usage of SAR dipoles calibrated less than 3 years ago but more than 1 year ago were confirmed in maintaining return loss (< -20 dB, within 20% of prior calibration) and impedance (within 5 ohm from prior calibration) requirements per extended calibrations in KDB Publication 865664 D01 v01r04.

D5GHzV2 SN: 1119 - Head							
Date of Measurement	Frequency	Return Loss (dB)	Δ%	Impedance (Ω)	ΔΩ	Impedance Imaginary (jΩ)	ΔΩ
8/11/2015	5200 MHz	-21.5		51.6		-8.4	
8/10/2016		-21.3	-0.9	51.2	-0.4	-8.7	-0.3
8/11/2017		-22.1	2.8	50.8	-0.8	-8.1	0.3
8/11/2015	5300 MHz	-27.8		51.4		-3.9	
8/10/2016		-26.4	-5.0	49.8	-1.6	-4.8	-0.9
8/11/2017		-26.9	-3.2	50.2	-1.2	-4.2	-0.3
8/11/2015	5500 MHz	-25.8		54.2		-3.4	
8/10/2016		-24.3	-5.8	52.6	-1.6	-3.9	-0.5
8/11/2017		-25.2	-2.3	53.7	-0.5	-4.4	-1.0
8/11/2015	5600 MHz	-24.3		56.3		-1.5	
8/10/2016		-23.9	-1.6	55.0	-1.3	-2.1	-0.6
8/11/2017		-23.5	-3.3	55.9	-0.4	-1.8	-0.3
8/11/2015	5800 MHz	-23.4		56.6		-2.8	
8/10/2016		-24.3	3.8	54.9	-1.7	-4.1	-1.3
8/11/2017		-24.6	5.1	55.3	-1.3	-3.5	-0.7
D5GHzV2 SN: 1119 - Body							
Date of Measurement	Frequency	Return Loss (dB)	Δ%	Impedance Real (Ω)	ΔΩ	Impedance Imaginary (jΩ)	ΔΩ
8/11/2015	5200 MHz	-22.8		51.6		-7.2	
8/10/2016		-21.5	-5.7	51.2	-0.4	-7.9	-0.7
8/11/2017		-22.2	-2.6	50.8	-0.8	-7.5	-0.3
8/11/2015	5300 MHz	-30.8		51.1		-2.7	
8/10/2016		-29.6	-3.9	51.3	0.2	-3.2	-0.5
8/11/2017		-29.3	-4.9	50.2	-0.9	-2.4	0.3
8/11/2015	5500 MHz	-27.4		54.3		-1.3	
8/10/2016		-26.3	-4.0	53.3	-1.0	-2.0	-0.7
8/11/2017		-27.8	1.5	52.5	-1.8	-1.7	-0.4
8/11/2015	5600 MHz	-24.4		56.4		-0.1	
8/10/2016		-23.6	-3.3	55.9	-0.5	-0.9	-0.8
8/11/2017		-24.5	0.4	56.9	0.5	-0.5	-0.4
8/11/2015	5800 MHz	-23.1		57.5		-0.9	
8/10/2016		-23.9	3.5	56.6	-0.9	-1.1	-0.2
8/11/2017		-24.2	4.8	57.6	0.1	-1.2	-0.3

Appendix (Additional assessments outside the scope of SCS 0108)

Antenna Parameters with Head TSL at 5200 MHz

Impedance, transformed to feed point	51.6 Ω - 8.4 j Ω
Return Loss	- 21.5 dB

Antenna Parameters with Head TSL at 5300 MHz

Impedance, transformed to feed point	51.4 Ω - 3.9 j Ω
Return Loss	- 27.8 dB

Antenna Parameters with Head TSL at 5500 MHz

Impedance, transformed to feed point	54.2 Ω - 3.4 j Ω
Return Loss	- 25.8 dB

Antenna Parameters with Head TSL at 5600 MHz

Impedance, transformed to feed point	56.3 Ω - 1.5 j Ω
Return Loss	- 24.3 dB

Antenna Parameters with Head TSL at 5800 MHz

Impedance, transformed to feed point	56.6 Ω - 2.8 j Ω
Return Loss	- 23.4 dB

Antenna Parameters with Body TSL at 5200 MHz

Impedance, transformed to feed point	51.6 Ω - 7.2 j Ω
Return Loss	- 22.8 dB

Antenna Parameters with Body TSL at 5300 MHz

Impedance, transformed to feed point	51.1 Ω - 2.7 j Ω
Return Loss	- 30.8 dB

Antenna Parameters with Body TSL at 5500 MHz

Impedance, transformed to feed point	54.3 Ω - 1.3 j Ω
Return Loss	- 27.4 dB

Antenna Parameters with Body TSL at 5600 MHz

Impedance, transformed to feed point	56.4 Ω - 0.1 j Ω
Return Loss	- 24.4 dB

Antenna Parameters with Body TSL at 5800 MHz

Impedance, transformed to feed point	57.5 Ω - 0.9 j Ω
Return Loss	- 23.1 dB

General Antenna Parameters and Design

Electrical Delay (one direction)	1.206 ns
----------------------------------	----------

After long term use with 100W radiated power, only a slight warming of the dipole near the feedpoint can be measured.

The dipole is made of standard semirigid coaxial cable. The center conductor of the feeding line is directly connected to the second arm of the dipole. The antenna is therefore short-circuited for DC-signals. On some of the dipoles, small end caps are added to the dipole arms in order to improve matching when loaded according to the position as explained in the "Measurement Conditions" paragraph. The SAR data are not affected by this change. The overall dipole length is still according to the Standard.

No excessive force must be applied to the dipole arms, because they might bend or the soldered connections near the feedpoint may be damaged.

Additional EUT Data

Manufactured by	SPEAG
Manufactured on	September 08, 2011

DASY5 Validation Report for Head TSL

Date: 10.08.2015

Test Laboratory: SPEAG, Zurich, Switzerland

DUT: Dipole 5GHz; Type: D5GHzV2; Serial: D5GHzV2 - SN: 1119

Communication System: UID 0 - CW; Frequency: 5200 MHz, Frequency: 5300 MHz, Frequency: 5500 MHz, Frequency: 5600 MHz, Frequency: 5800 MHz

Medium parameters used: $f = 5200$ MHz; $\sigma = 4.53$ S/m; $\epsilon_r = 35.5$; $\rho = 1000$ kg/m³, Medium parameters used: $f = 5300$ MHz; $\sigma = 4.63$ S/m; $\epsilon_r = 35.4$; $\rho = 1000$ kg/m³, Medium parameters used: $f = 5500$ MHz; $\sigma = 4.82$ S/m; $\epsilon_r = 35.1$; $\rho = 1000$ kg/m³, Medium parameters used: $f = 5600$ MHz; $\sigma = 4.93$ S/m; $\epsilon_r = 34.9$; $\rho = 1000$ kg/m³, Medium parameters used: $f = 5800$ MHz; $\sigma = 5.14$ S/m; $\epsilon_r = 34.7$; $\rho = 1000$ kg/m³

Phantom section: Flat Section

Measurement Standard: DASY5 (IEEE/IEC/ANSI C63.19-2011)

DASY52 Configuration:

- Probe: EX3DV4 - SN3503; ConvF(5.51, 5.51, 5.51); Calibrated: 30.12.2014, ConvF(5.21, 5.21, 5.21); Calibrated: 30.12.2014, ConvF(5.12, 5.12, 5.12); Calibrated: 30.12.2014, ConvF(4.92, 4.92, 4.92); Calibrated: 30.12.2014, ConvF(4.9, 4.9, 4.9); Calibrated: 30.12.2014;
- Sensor-Surface: 1.4mm (Mechanical Surface Detection)
- Electronics: DAE4 Sn601; Calibrated: 18.08.2014
- Phantom: Flat Phantom 5.0 (front); Type: QD000P50AA; Serial: 1001
- DASY52 52.8.8(1222); SEMCAD X 14.6.10(7331)

Dipole Calibration for Head Tissue/Pin=100mW, dist=10mm, f=5200 MHz/Zoom Scan, dist=1.4mm (8x8x7)/Cube 0: Measurement grid: dx=4mm, dy=4mm, dz=1.4mm

Reference Value = 66.84 V/m; Power Drift = -0.00 dB

Peak SAR (extrapolated) = 29.5 W/kg

SAR(1 g) = 8.11 W/kg; SAR(10 g) = 2.32 W/kg

Maximum value of SAR (measured) = 18.6 W/kg

Dipole Calibration for Head Tissue/Pin=100mW, dist=10mm, f=5300 MHz/Zoom Scan, dist=1.4mm (8x8x7)/Cube 0: Measurement grid: dx=4mm, dy=4mm, dz=1.4mm

Reference Value = 67.35 V/m; Power Drift = -0.03 dB

Peak SAR (extrapolated) = 32.1 W/kg

SAR(1 g) = 8.46 W/kg; SAR(10 g) = 2.42 W/kg

Maximum value of SAR (measured) = 19.8 W/kg

Dipole Calibration for Head Tissue/Pin=100mW, dist=10mm, f=5500 MHz/Zoom Scan, dist=1.4mm (8x8x7)/Cube 0: Measurement grid: dx=4mm, dy=4mm, dz=1.4mm

Reference Value = 66.30 V/m; Power Drift = -0.00 dB

Peak SAR (extrapolated) = 33.6 W/kg

SAR(1 g) = 8.5 W/kg; SAR(10 g) = 2.42 W/kg

Maximum value of SAR (measured) = 20.2 W/kg

Dipole Calibration for Head Tissue/Pin=100mW, dist=10mm, f=5600 MHz/Zoom Scan, dist=1.4mm (8x8x7)/Cube 0: Measurement grid: dx=4mm, dy=4mm, dz=1.4mm

Reference Value = 65.73 V/m; Power Drift = 0.00 dB

Peak SAR (extrapolated) = 33.5 W/kg

SAR(1 g) = 8.46 W/kg; SAR(10 g) = 2.41 W/kg

Maximum value of SAR (measured) = 20.0 W/kg

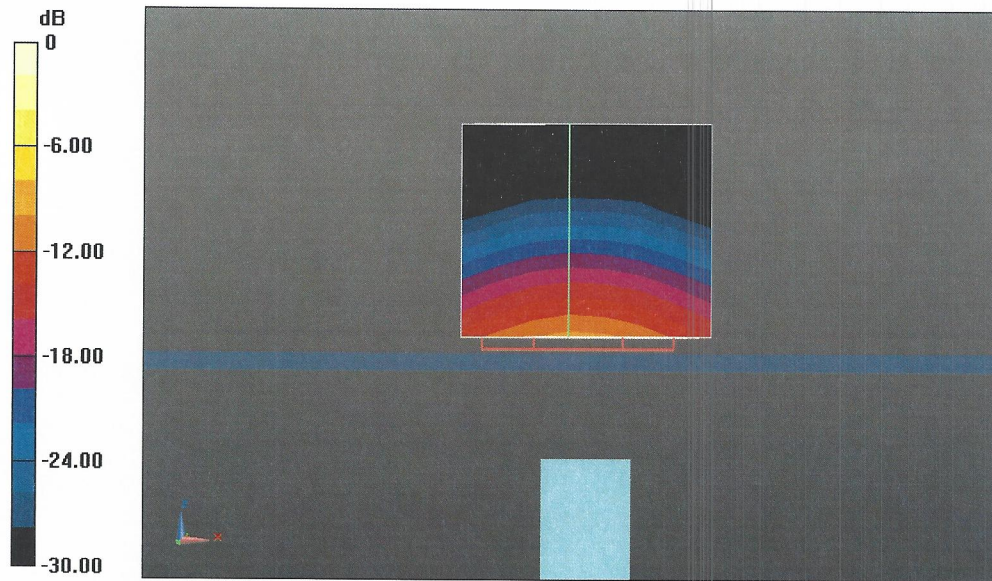
Dipole Calibration for Head Tissue/Pin=100mW, dist=10mm, f=5800 MHz/Zoom Scan, dist=1.4mm (8x8x7)/Cube 0: Measurement grid: dx=4mm, dy=4mm, dz=1.4mm

Reference Value = 63.40 V/m; Power Drift = -0.00 dB

Peak SAR (extrapolated) = 33.5 W/kg

SAR(1 g) = 8.1 W/kg; SAR(10 g) = 2.31 W/kg

Maximum value of SAR (measured) = 19.7 W/kg



0 dB = 18.6 W/kg = 12.70 dBW/kg

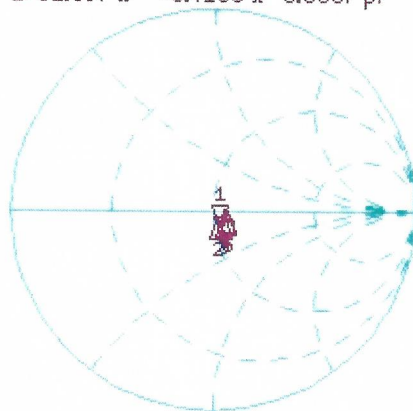
Impedance Measurement Plot for Head TSL

10 Aug 2015 14:44:08
 [CH1] S11 1 U FS 1: 51.607 Ω -8.4160 Ω 3.6367 pF 5 200.000 000 MHz

*
 Del
 Cor

Avg
 16

H1d



CH1 Markers

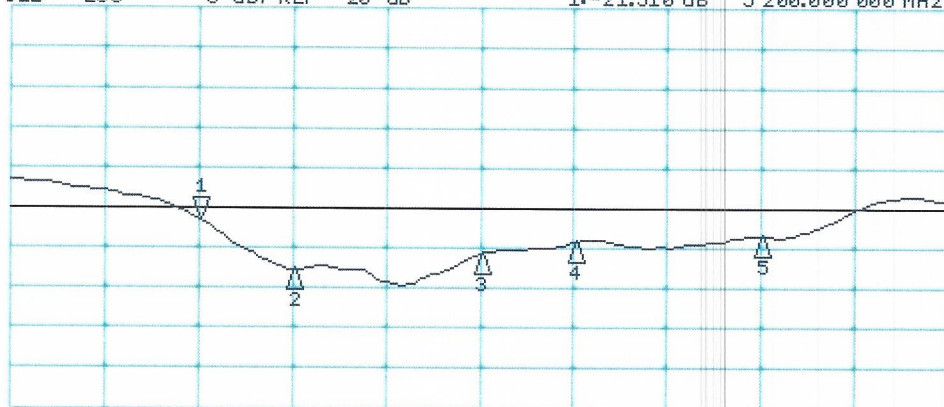
2: 51.441 Ω
 -3.8633 Ω
 5.30000 GHz
 3: 54.195 Ω
 -3.3574 Ω
 5.50000 GHz
 4: 56.303 Ω
 -1.5313 Ω
 5.60000 GHz
 5: 56.602 Ω
 -2.8145 Ω
 5.80000 GHz

CH2 S11 LOG 5 dB/REF -20 dB 1: -21.510 dB 5 200.000 000 MHz

Del
 Cor

Avg
 16

H1d



CH2 Markers

2: -27.822 dB
 5.30000 GHz
 3: -25.751 dB
 5.50000 GHz
 4: -24.294 dB
 5.60000 GHz
 5: -23.440 dB
 5.80000 GHz

START 5 000.000 000 MHz

STOP 6 000.000 000 MHz

DASY5 Validation Report for Body TSL

Date: 11.08.2015

Test Laboratory: SPEAG, Zurich, Switzerland

DUT: Dipole 5GHz; Type: D5GHzV2; Serial: D5GHzV2 - SN: 1119

Communication System: UID 0 - CW; Frequency: 5200 MHz, Frequency: 5300 MHz, Frequency: 5500 MHz, Frequency: 5600 MHz, Frequency: 5800 MHz

Medium parameters used: $f = 5200$ MHz; $\sigma = 5.43$ S/m; $\epsilon_r = 47.9$; $\rho = 1000$ kg/m³, Medium parameters used: $f = 5300$ MHz; $\sigma = 5.56$ S/m; $\epsilon_r = 47.7$; $\rho = 1000$ kg/m³, Medium parameters used: $f = 5500$ MHz; $\sigma = 5.82$ S/m; $\epsilon_r = 47.3$; $\rho = 1000$ kg/m³, Medium parameters used: $f = 5600$ MHz; $\sigma = 5.95$ S/m; $\epsilon_r = 47.2$; $\rho = 1000$ kg/m³, Medium parameters used: $f = 5800$ MHz; $\sigma = 6.23$ S/m; $\epsilon_r = 46.9$; $\rho = 1000$ kg/m³

Phantom section: Flat Section

Measurement Standard: DASY5 (IEEE/IEC/ANSI C63.19-2011)

DASY52 Configuration:

- Probe: EX3DV4 - SN3503; ConvF(4.95, 4.95, 4.95); Calibrated: 30.12.2014, ConvF(4.78, 4.78, 4.78); Calibrated: 30.12.2014, ConvF(4.45, 4.45, 4.45); Calibrated: 30.12.2014, ConvF(4.35, 4.35, 4.35); Calibrated: 30.12.2014, ConvF(4.32, 4.32, 4.32); Calibrated: 30.12.2014;
- Sensor-Surface: 1.4mm (Mechanical Surface Detection)
- Electronics: DAE4 Sn601; Calibrated: 18.08.2014
- Phantom: Flat Phantom 5.0 (back); Type: QD000P50AA; Serial: 1002
- DASY52 52.8.8(1222); SEMCAD X 14.6.10(7331)

Dipole Calibration for Body Tissue/Pin=100mW, dist=10mm, f=5200 MHz/Zoom Scan, dist=1.4mm (8x8x7)/Cube 0: Measurement grid: dx=4mm, dy=4mm, dz=1.4mm

Reference Value = 60.11 V/m; Power Drift = 0.01 dB

Peak SAR (extrapolated) = 30.4 W/kg

SAR(1 g) = 7.77 W/kg; SAR(10 g) = 2.17 W/kg

Maximum value of SAR (measured) = 18.1 W/kg

Dipole Calibration for Body Tissue/Pin=100mW, dist=10mm, f=5300 MHz/Zoom Scan, dist=1.4mm (8x8x7)/Cube 0: Measurement grid: dx=4mm, dy=4mm, dz=1.4mm

Reference Value = 59.89 V/m; Power Drift = -0.01 dB

Peak SAR (extrapolated) = 31.4 W/kg

SAR(1 g) = 7.79 W/kg; SAR(10 g) = 2.17 W/kg

Maximum value of SAR (measured) = 18.3 W/kg

Dipole Calibration for Body Tissue/Pin=100mW, dist=10mm, f=5500 MHz/Zoom Scan, dist=1.4mm (8x8x7)/Cube 0: Measurement grid: dx=4mm, dy=4mm, dz=1.4mm

Reference Value = 60.26 V/m; Power Drift = 0.00 dB

Peak SAR (extrapolated) = 35.5 W/kg

SAR(1 g) = 8.3 W/kg; SAR(10 g) = 2.3 W/kg

Maximum value of SAR (measured) = 19.9 W/kg

Dipole Calibration for Body Tissue/Pin=100mW, dist=10mm, f=5600 MHz/Zoom Scan, dist=1.4mm (8x8x7)/Cube 0: Measurement grid: dx=4mm, dy=4mm, dz=1.4mm

Reference Value = 59.24 V/m; Power Drift = 0.01 dB

Peak SAR (extrapolated) = 35.5 W/kg

SAR(1 g) = 8.1 W/kg; SAR(10 g) = 2.25 W/kg

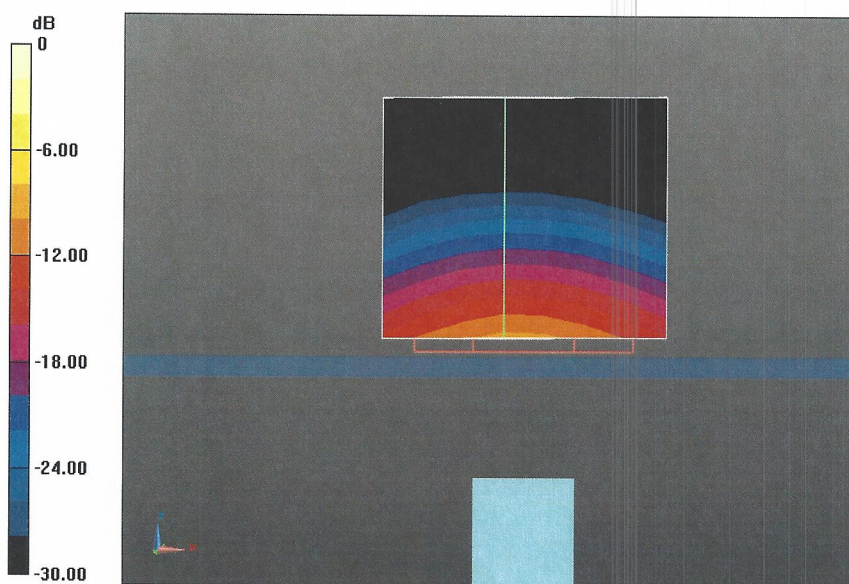
Dipole Calibration for Body Tissue/Pin=100mW, dist=10mm, f=5800 MHz/Zoom Scan, dist=1.4mm (8x8x7)/Cube 0: Measurement grid: dx=4mm, dy=4mm, dz=1.4mm

Reference Value = 57.15 V/m; Power Drift = 0.02 dB

Peak SAR (extrapolated) = 36.5 W/kg

SAR(1 g) = 7.91 W/kg; SAR(10 g) = 2.19 W/kg

Maximum value of SAR (measured) = 19.6 W/kg



0 dB = 18.1 W/kg = 12.58 dBW/kg