

ANNEX A Graph Results

GSM850 Head

Date: 10/29/2024

Electronics: DAE4 Sn1331

Medium: H700-6000M

Medium parameters used: $f = 825 \text{ MHz}$; $\sigma = 0.851 \text{ S/m}$; $\epsilon_r = 44.266$; $\rho = 1000 \text{ kg/m}^3$

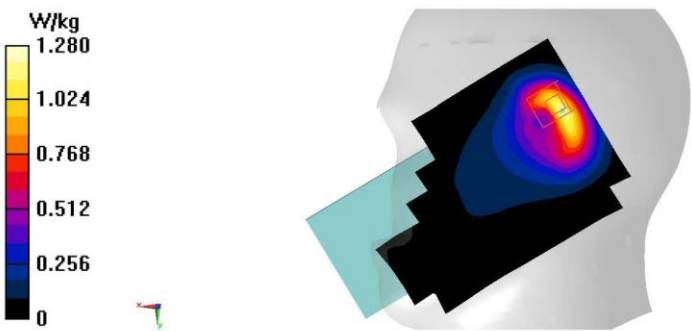
Ambient Temperature: 23.3°C Liquid Temperature: 22.5°C

Communication System: UID 0, GSM 850 GPRS-3 (0) Frequency: 824.2 MHz Duty Cycle: 1:2.66993

Probe: EX3DV4 - SN7673 ConvF(10.45, 10.45, 10.45)

Area Scan (81x141x1): Interpolated grid: $dx=1.500 \text{ mm}$, $dy=1.500 \text{ mm}$
Maximum value of SAR (interpolated) = 1.22 W/kg

Zoom Scan (6x5x7)/Cube 0: Measurement grid: $dx=8\text{mm}$, $dy=8\text{mm}$, $dz=5\text{mm}$
Reference Value = 23.20 V/m; Power Drift = -0.13 dB
Peak SAR (extrapolated) = 2.96 W/kg
SAR(1 g) = 0.924 W/kg; SAR(10 g) = 0.385 W/kg
Maximum value of SAR (measured) = 1.28 W/kg



GSM850 Body

Date: 10/29/2024

Electronics: DAE4 Sn1331

Medium: H700-6000M

Medium parameters used: $f = 825$ MHz; $\sigma = 0.851$ S/m; $\epsilon_r = 44.266$; $\rho = 1000$ kg/m³

Ambient Temperature: 23.3°C Liquid Temperature: 22.5°C

Communication System: UID 0, GSM 850 Glass 12 (0) Frequency: 824.2 MHz Duty Cycle: 1:1.99986

Probe: EX3DV4 - SN7673 ConvF(10.45, 10.45, 10.45)

Area Scan (81x81x1): Interpolated grid: $dx=1.500$ mm, $dy=1.500$ mm

Maximum value of SAR (interpolated) = 0.458 W/kg

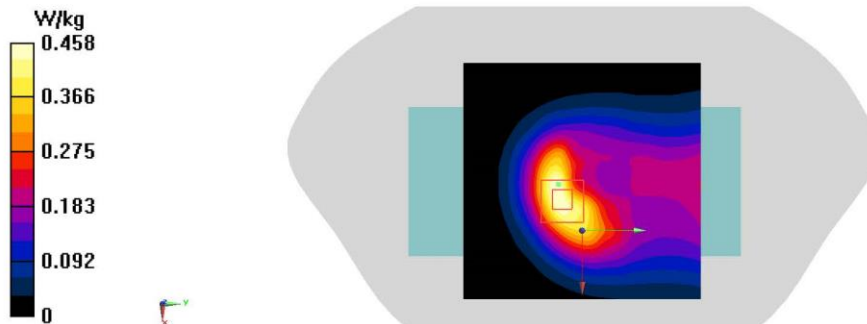
Zoom Scan (6x5x7)/Cube 0: Measurement grid: $dx=8$ mm, $dy=8$ mm, $dz=5$ mm

Reference Value = 16.11 V/m; Power Drift = -0.06 dB

Peak SAR (extrapolated) = 0.805 W/kg

SAR(1 g) = 0.445 W/kg; SAR(10 g) = 0.256 W/kg

Maximum value of SAR (measured) = 0.663 W/kg



GSM1900 Head

Date: 11/12/2024

Electronics: DAE4 Sn1331

Medium: H700-6000M

Medium parameters used (interpolated): $f = 1850.2$ MHz; $\sigma = 1.405$ S/m; $\epsilon_r = 41.871$; $\rho = 1000$ kg/m³

Ambient Temperature: 23.3°C Liquid Temperature: 22.5°C

Communication System: UID 0, GSM 1900 GPRS-3 (0) Frequency: 1850.2 MHz Duty Cycle: 1:2.66993

Probe: EX3DV4 - SN7673 ConvF(8.1, 8.1, 8.1);

Area Scan (81x141x1): Interpolated grid: $dx=1.500$ mm, $dy=1.500$ mm

Maximum value of SAR (interpolated) = 0.657 W/kg

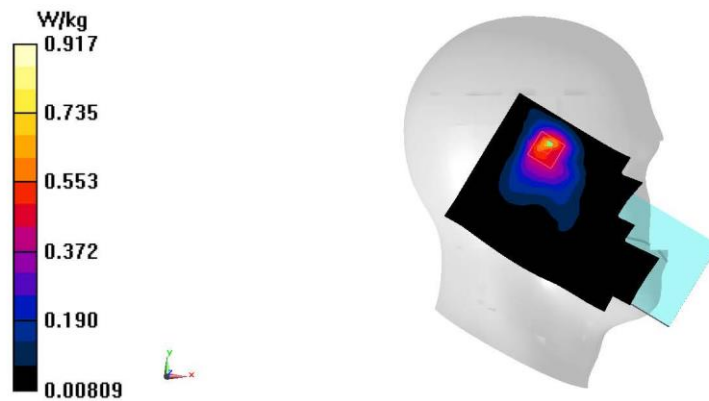
Zoom Scan (6x6x7)/Cube 0: Measurement grid: $dx=8$ mm, $dy=8$ mm, $dz=5$ mm

Reference Value = 11.51 V/m; Power Drift = -0.02 dB

Peak SAR (extrapolated) = 1.15 W/kg

SAR(1 g) = 0.574 W/kg; SAR(10 g) = 0.304 W/kg

Maximum value of SAR (measured) = 0.917 W/kg



GSM1900 Body

Date: 11/12/2024

Electronics: DAE4 Sn1331

Medium: H700-6000M

Medium parameters used: $f = 1880$ MHz; $\sigma = 1.427$ S/m; $\epsilon_r = 41.859$; $\rho = 1000$ kg/m³

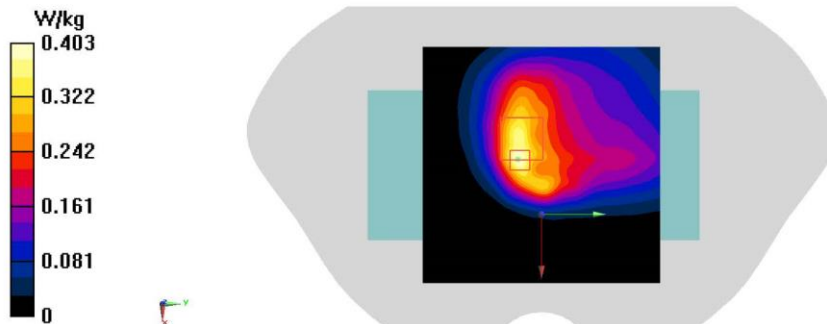
Ambient Temperature: 23.3°C Liquid Temperature: 22.5°C

Communication System: UID 0, GSM 1900 GPRS12 (0) Frequency: 1880 MHz Duty Cycle: 1:1.99986

Probe: EX3DV4 - SN7673 ConvF(8.1, 8.1, 8.1)

Area Scan (81x81x1): Interpolated grid: $dx=1.500$ mm, $dy=1.500$ mm
Maximum value of SAR (interpolated) = 0.403 W/kg

Zoom Scan (6x5x7)/Cube 0: Measurement grid: $dx=8$ mm, $dy=8$ mm, $dz=5$ mm
Reference Value = 13.70 V/m; Power Drift = -0.04 dB
Peak SAR (extrapolated) = 0.657 W/kg
SAR(1 g) = 0.334 W/kg; SAR(10 g) = 0.189 W/kg
Maximum value of SAR (measured) = 0.518 W/kg



WCDMA1900 Head

Date: 11/12/2024

Electronics: DAE4 Sn1331

Medium: H700-6000M

Medium parameters used: $f = 1880$ MHz; $\sigma = 1.427$ S/m; $\epsilon_r = 41.859$; $\rho = 1000$ kg/m³

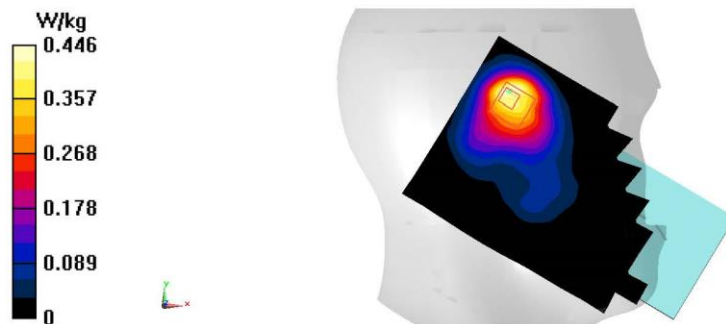
Ambient Temperature: 23.3°C Liquid Temperature: 22.5°C

Communication System: UID 0, WCDMA 1900 (0) Frequency: 1880 MHz Duty Cycle: 1:1

Probe: EX3DV4 - SN7673 ConvF(8.1, 8.1, 8.1)

Area Scan (81x141x1): Interpolated grid: $dx=1.500$ mm, $dy=1.500$ mm
Maximum value of SAR (interpolated) = 0.446 W/kg

Zoom Scan (6x6x7)/Cube 0: Measurement grid: $dx=8$ mm, $dy=8$ mm, $dz=5$ mm
Reference Value = 9.675 V/m; Power Drift = 0.06 dB
Peak SAR (extrapolated) = 0.537 W/kg
SAR(1 g) = 0.292 W/kg; SAR(10 g) = 0.169 W/kg
Maximum value of SAR (measured) = 0.432 W/kg



WCDMA1900 Body

Date: 11/12/2024

Electronics: DAE4 Sn1331

Medium: H700-6000M

Medium parameters used (interpolated): $f = 1907.6$ MHz; $\sigma = 1.446$ S/m; $\epsilon_r = 41.761$; $\rho = 1000$ kg/m³

Ambient Temperature: 23.3°C Liquid Temperature: 22.5°C

Communication System: UID 0, WCDMA 1900 (0) Frequency: 1907.6 MHz Duty Cycle: 1:1

Probe: EX3DV4 - SN7673 ConvF(8.1, 8.1, 8.1)

Area Scan (81x81x1): Interpolated grid: $dx=1.500$ mm, $dy=1.500$ mm

Maximum value of SAR (interpolated) = 0.916 W/kg

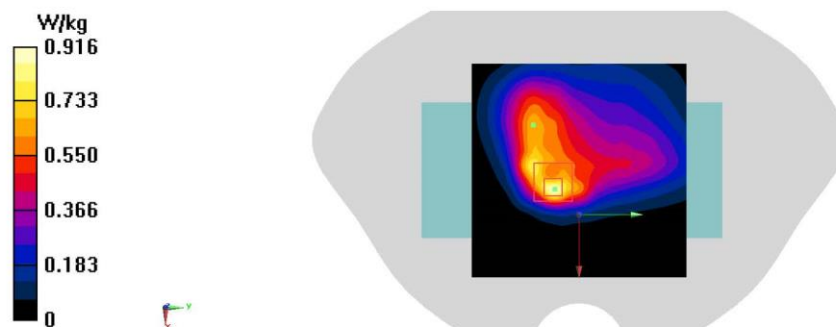
Zoom Scan (5x5x7)/Cube 0: Measurement grid: $dx=8$ mm, $dy=8$ mm, $dz=5$ mm

Reference Value = 16.74 V/m; Power Drift = -0.09 dB

Peak SAR (extrapolated) = 1.09 W/kg

SAR(1 g) = 0.554 W/kg; SAR(10 g) = 0.296 W/kg

Maximum value of SAR (measured) = 0.887 W/kg



WCDMA1700 Head

Date: 11/9/2024

Electronics: DAE4 Sn1331

Medium: H700-6000M

Medium parameters used (interpolated): $f = 1712.4$ MHz; $\sigma = 1.32$ S/m; $\epsilon_r = 42.131$; $\rho = 1000$ kg/m³

Ambient Temperature: 23.3°C Liquid Temperature: 22.5°C

Communication System: UID 0, WCDMA 1700 Band4 (0) Frequency: 1712.4 MHz Duty Cycle: 1:1

Probe: EX3DV4 - SN7673 ConvF(8.45, 8.45, 8.45)

Area Scan (81x141x1): Interpolated grid: $dx=1.500$ mm, $dy=1.500$ mm

Maximum value of SAR (interpolated) = 0.628 W/kg

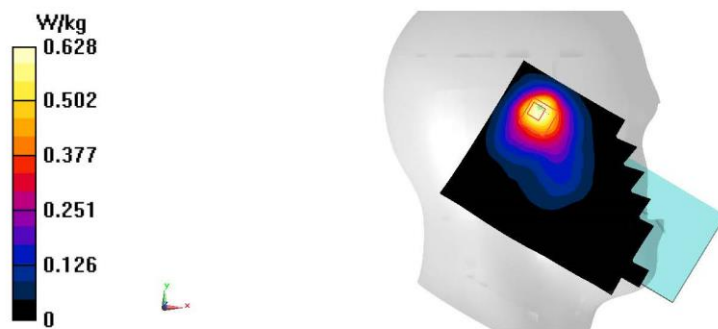
Zoom Scan (6x6x7)/Cube 0: Measurement grid: $dx=8$ mm, $dy=8$ mm, $dz=5$ mm

Reference Value = 9.479 V/m; Power Drift = 0.14 dB

Peak SAR (extrapolated) = 0.780 W/kg

SAR(1 g) = 0.428 W/kg; SAR(10 g) = 0.241 W/kg

Maximum value of SAR (measured) = 0.636 W/kg



WCDMA1700 Body

Date: 11/9/2024

Electronics: DAE4 Sn1331

Medium: H700-6000M

Medium parameters used (interpolated): $f = 1712.4$ MHz; $\sigma = 1.32$ S/m; $\epsilon_r = 42.131$; $\rho = 1000$ kg/m³

Ambient Temperature: 23.3°C Liquid Temperature: 22.5°C

Communication System: UID 0, WCDMA 1700 Band4 (0) Frequency: 1712.4 MHz Duty Cycle: 1:1

Probe: EX3DV4 - SN7673 ConvF(8.45, 8.45, 8.45)

Area Scan (81x81x1): Interpolated grid: $dx=1.500$ mm, $dy=1.500$ mm

Maximum value of SAR (interpolated) = 1.07 W/kg

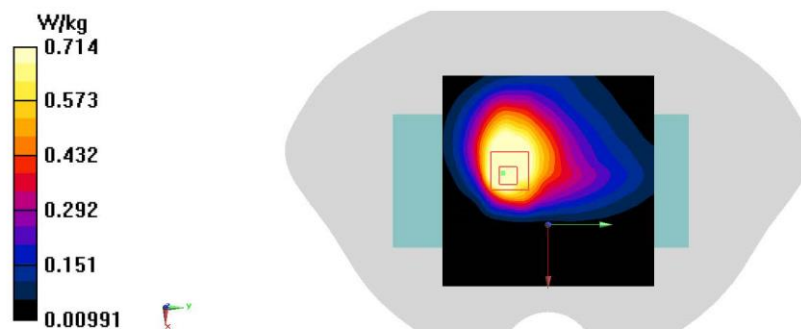
Zoom Scan 2 (6x5x7)/Cube 0: Measurement grid: $dx=8$ mm, $dy=8$ mm, $dz=5$ mm

Reference Value = 15.02 V/m; Power Drift = 0.08 dB

Peak SAR (extrapolated) = 0.930 W/kg

SAR(1 g) = 0.484 W/kg; SAR(10 g) = 0.259 W/kg

Maximum value of SAR (measured) = 0.714 W/kg



WCDMA850 Head

Date: 10/29/2024

Electronics: DAE4 Sn1331

Medium: H700-6000M

Medium parameters used (interpolated): $f = 826.4$ MHz; $\sigma = 0.851$ S/m; $\epsilon_r = 44.26$; $\rho = 1000$ kg/m³

Ambient Temperature: 23.3°C Liquid Temperature: 22.5°C

Communication System: UID 0, WCDMA 850 (0) Frequency: 826.4 MHz Duty Cycle: 1:1

Probe: EX3DV4 - SN7673 ConvF(10.45, 10.45, 10.45)

Area Scan (81x141x1): Interpolated grid: $dx=1.500$ mm, $dy=1.500$ mm

Maximum value of SAR (interpolated) = 0.772 W/kg

Zoom Scan (7x6x7)/Cube 0: Measurement grid: $dx=8$ mm, $dy=8$ mm, $dz=5$ mm

Reference Value = 18.59 V/m; Power Drift = 0.14 dB

Peak SAR (extrapolated) = 1.05 W/kg

SAR(1 g) = 0.427 W/kg; SAR(10 g) = 0.225 W/kg

Maximum value of SAR (measured) = 0.752 W/kg



WCDMA850 Body

Date: 10/29/2024

Electronics: DAE4 Sn1331

Medium: H700-6000M

Medium parameters used (interpolated): $f = 826.4$ MHz; $\sigma = 0.851$ S/m; $\epsilon_r = 44.26$; $\rho = 1000$ kg/m³

Ambient Temperature: 23.3°C Liquid Temperature: 22.5°C

Communication System: UID 0, WCDMA 850 (0) Frequency: 826.4 MHz Duty Cycle: 1:1

Probe: EX3DV4 - SN7673 ConvF(10.45, 10.45, 10.45)

Area Scan (81x81x1): Interpolated grid: $dx=1.500$ mm, $dy=1.500$ mm

Maximum value of SAR (interpolated) = 0.460 W/kg

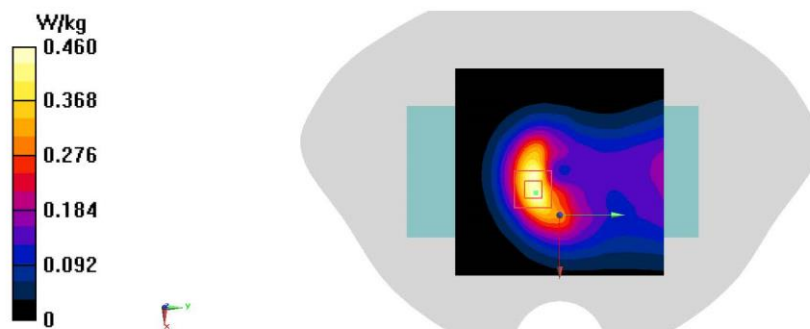
Zoom Scan (5x5x7)/Cube 0: Measurement grid: $dx=8$ mm, $dy=8$ mm, $dz=5$ mm

Reference Value = 11.26 V/m; Power Drift = -0.01 dB

Peak SAR (extrapolated) = 0.570 W/kg

SAR(1 g) = 0.306 W/kg; SAR(10 g) = 0.174 W/kg

Maximum value of SAR (measured) = 0.461 W/kg



LTEB2 Head

Date: 11/12/2024

Electronics: DAE4 Sn1331

Medium: H700-6000M

Medium parameters used: $f = 1880$ MHz; $\sigma = 1.427$ S/m; $\epsilon_r = 41.859$; $\rho = 1000$ kg/m³

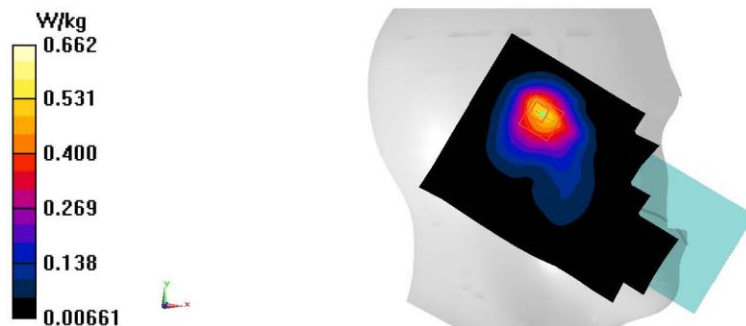
Ambient Temperature: 23.3°C Liquid Temperature: 22.5°C

Communication System: UID 0, LTE Band2(20MB) (0) Frequency: 1880 MHz Duty Cycle: 1:1

Probe: EX3DV4 - SN7673 ConvF(8.1, 8.1, 8.1)

Area Scan (81x141x1): Interpolated grid: $dx=1.500$ mm, $dy=1.500$ mm
Maximum value of SAR (interpolated) = 0.536 W/kg

Zoom Scan (6x5x7)/Cube 0: Measurement grid: $dx=8$ mm, $dy=8$ mm, $dz=5$ mm
Reference Value = 10.32 V/m; Power Drift = 0.17 dB
Peak SAR (extrapolated) = 0.850 W/kg
SAR(1 g) = 0.472 W/kg; SAR(10 g) = 0.270 W/kg
Maximum value of SAR (measured) = 0.662 W/kg



LTE B2 Body

Date: 11/12/2024

Electronics: DAE4 Sn1331

Medium: H700-6000M

Medium parameters used: $f = 1900$ MHz; $\sigma = 1.439$ S/m; $\epsilon_r = 41.791$; $\rho = 1000$ kg/m³

Ambient Temperature: 23.3°C Liquid Temperature: 22.5°C

Communication System: UID 0, LTE Band2(20MB) (0) Frequency: 1900 MHz Duty Cycle: 1:1

Probe: EX3DV4 - SN7673 ConvF(8.1, 8.1, 8.1);

Area Scan (81x81x1): Interpolated grid: $dx=1.500$ mm, $dy=1.500$ mm

Maximum value of SAR (interpolated) = 0.535 W/kg

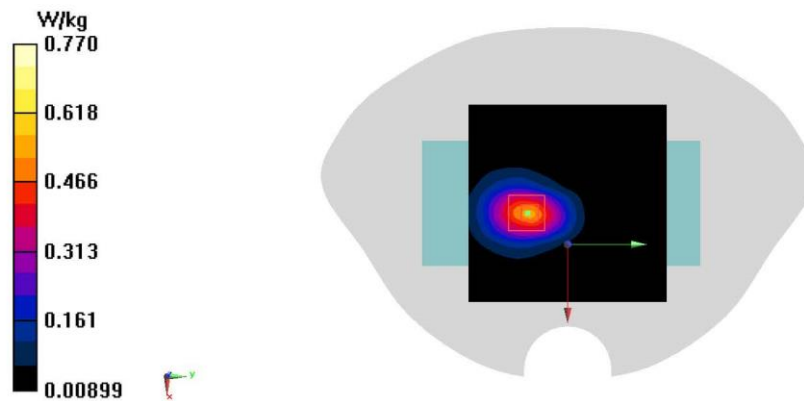
Zoom Scan (5x5x7)/Cube 0: Measurement grid: $dx=8$ mm, $dy=8$ mm, $dz=5$ mm

Reference Value = 10.98 V/m; Power Drift = -0.01 dB

Peak SAR (extrapolated) = 0.920 W/kg

SAR(1 g) = 0.520 W/kg; SAR(10 g) = 0.289 W/kg

Maximum value of SAR (measured) = 0.770 W/kg



LTEB4 Head

Date: 11/9/2024

Electronics: DAE4 Sn1331

Medium: H700-6000M

Medium parameters used (interpolated): $f = 1732.5$ MHz; $\sigma = 1.329$ S/m; $\epsilon_r = 42.084$; $\rho = 1000$ kg/m³

Ambient Temperature: 23.3°C Liquid Temperature: 22.5°C

Communication System: UID 0, LTE Band4 (0) Frequency: 1732.5 MHz Duty Cycle: 1:1

Probe: EX3DV4 - SN7673 ConvF(8.45, 8.45, 8.45)

Area Scan (81x141x1): Interpolated grid: $dx=1.500$ mm, $dy=1.500$ mm

Maximum value of SAR (interpolated) = 0.475 W/kg

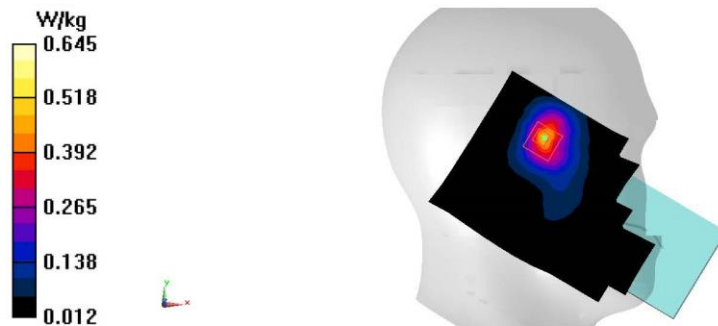
Zoom Scan (5x5x7)/Cube 0: Measurement grid: $dx=8$ mm, $dy=8$ mm, $dz=5$ mm

Reference Value = 6.580 V/m; Power Drift = -0.14 dB

Peak SAR (extrapolated) = 0.805 W/kg

SAR(1 g) = 0.430 W/kg; SAR(10 g) = 0.229 W/kg

Maximum value of SAR (measured) = 0.645 W/kg



LTE B4 Body

Date: 11/9/2024

Electronics: DAE4 Sn1331

Medium: H700-6000M

Medium parameters used (interpolated): $f = 1732.5$ MHz; $\sigma = 1.329$ S/m; $\epsilon_r = 42.084$; $\rho = 1000$ kg/m³

Ambient Temperature: 23.3°C Liquid Temperature: 22.5°C

Communication System: UID 0, LTE Band4 (0) Frequency: 1732.5 MHz Duty Cycle: 1:1

Probe: EX3DV4 - SN7673 ConvF(8.45, 8.45, 8.45)

Area Scan (81x81x1): Interpolated grid: dx=1.500 mm, dy=1.500 mm

Maximum value of SAR (interpolated) = 0.345 W/kg

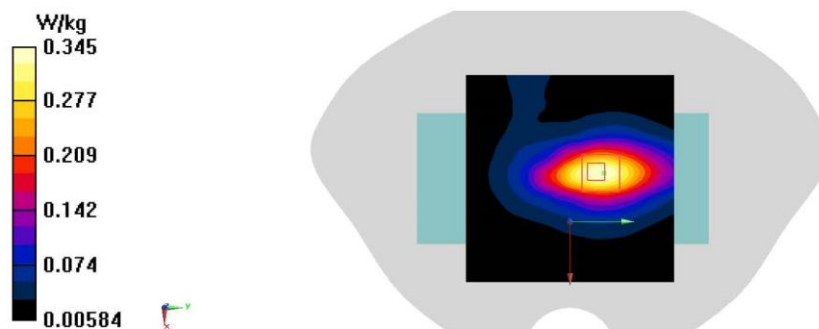
Zoom Scan (5x5x7)/Cube 0: Measurement grid: dx=8mm, dy=8mm, dz=5mm

Reference Value = 11.94 V/m; Power Drift = 0.04 dB

Peak SAR (extrapolated) = 0.425 W/kg

SAR(1 g) = 0.243 W/kg; SAR(10 g) = 0.142 W/kg

Maximum value of SAR (measured) = 0.358 W/kg



LTE B5 Head

Date: 10/29/2024

Electronics: DAE4 Sn1331

Medium: H700-6000M

Medium parameters used (interpolated): $f = 836.5$ MHz; $\sigma = 0.857$ S/m; $\epsilon_r = 44.217$; $\rho = 1000$ kg/m³

Ambient Temperature: 23.3°C Liquid Temperature: 22.5°C

Communication System: UID 0, LTE Band5 (0) Frequency: 836.5 MHz Duty Cycle: 1:1

Probe: EX3DV4 - SN7673 ConvF(10.45, 10.45, 10.45)

Area Scan (81x141x1): Interpolated grid: $dx=1.500$ mm, $dy=1.500$ mm

Maximum value of SAR (interpolated) = 0.839 W/kg

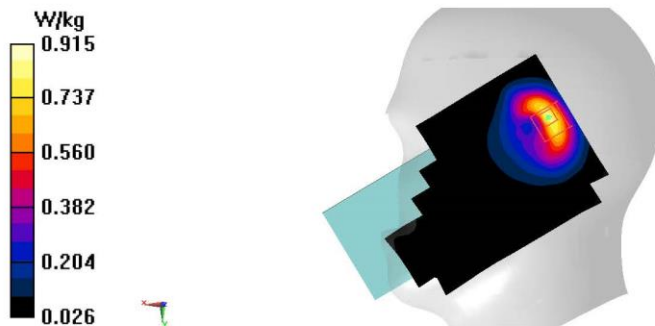
Zoom Scan (5x5x7)/Cube 0: Measurement grid: $dx=8$ mm, $dy=8$ mm, $dz=5$ mm

Reference Value = 18.13 V/m; Power Drift = 0.03 dB

Peak SAR (extrapolated) = 1.16 W/kg

SAR(1 g) = 0.515 W/kg; SAR(10 g) = 0.272 W/kg

Maximum value of SAR (measured) = 0.915 W/kg



LTE B5 Body

Date: 10/29/2024

Electronics: DAE4 Sn1331

Medium: H700-6000M

Medium parameters used (interpolated): $f = 836.5$ MHz; $\sigma = 0.857$ S/m; $\epsilon_r = 44.217$; $\rho = 1000$ kg/m³

Ambient Temperature: 23.3°C Liquid Temperature: 22.5°C

Communication System: UID 0, LTE Band5 (0) Frequency: 836.5 MHz Duty Cycle: 1:1

Probe: EX3DV4 - SN7673 ConvF(10.45, 10.45, 10.45)

Area Scan (81x81x1): Interpolated grid: dx=1.500 mm, dy=1.500 mm

Maximum value of SAR (interpolated) = 0.491 W/kg

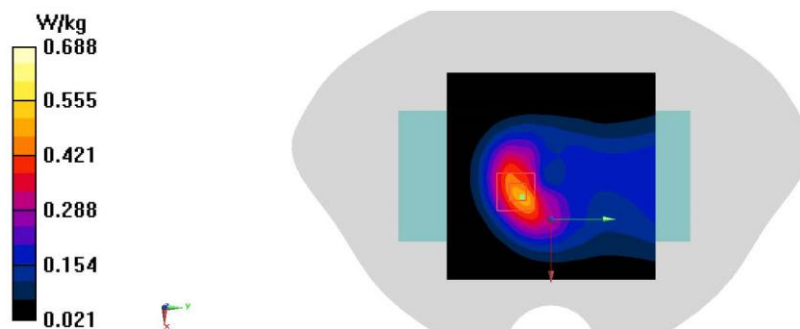
Zoom Scan (5x5x7)/Cube 0: Measurement grid: dx=8mm, dy=8mm, dz=5mm

Reference Value = 12.49 V/m; Power Drift = -0.02 dB

Peak SAR (extrapolated) = 0.864 W/kg

SAR(1 g) = 0.476 W/kg; SAR(10 g) = 0.271 W/kg

Maximum value of SAR (measured) = 0.688 W/kg



LTE B7 Head

Date: 11/15/2024

Electronics: DAE4 Sn1331

Medium: H700-6000M

Medium parameters used: $f = 2535$ MHz; $\sigma = 2.005$ S/m; $\epsilon_r = 40.672$; $\rho = 1000$ kg/m³

Ambient Temperature: 23.3°C Liquid Temperature: 22.5°C

Communication System: UID 0, LTE Band7-20M (0) Frequency: 2535 MHz Duty Cycle: 1:1

Probe: EX3DV4 - SN7673 ConvF(7.44, 7.44, 7.44)

Area Scan (101x171x1): Interpolated grid: $dx=1.200$ mm, $dy=1.200$ mm
Maximum value of SAR (interpolated) = 1.17 W/kg

Zoom Scan (7x7x7)/Cube 0: Measurement grid: $dx=5$ mm, $dy=5$ mm, $dz=5$ mm
Reference Value = 5.398 V/m; Power Drift = 0.14 dB
Peak SAR (extrapolated) = 1.60 W/kg
SAR(1 g) = 0.648 W/kg; SAR(10 g) = 0.295 W/kg
Maximum value of SAR (measured) = 1.18 W/kg



LTE B7 Body

Date: 11/15/2024

Electronics: DAE4 Sn1331

Medium: H700-6000M

Medium parameters used: $f = 2535$ MHz; $\sigma = 2.005$ S/m; $\epsilon_r = 40.672$; $\rho = 1000$ kg/m³

Ambient Temperature: 23.3°C Liquid Temperature: 22.5°C

Communication System: UID 0, LTE Band7-20M (0) Frequency: 2535 MHz Duty Cycle: 1:1

Probe: EX3DV4 - SN7673 ConvF(7.44, 7.44, 7.44);

Area Scan (101x101x1): Interpolated grid: $dx=1.200$ mm, $dy=1.200$ mm

Maximum value of SAR (interpolated) = 0.813 W/kg

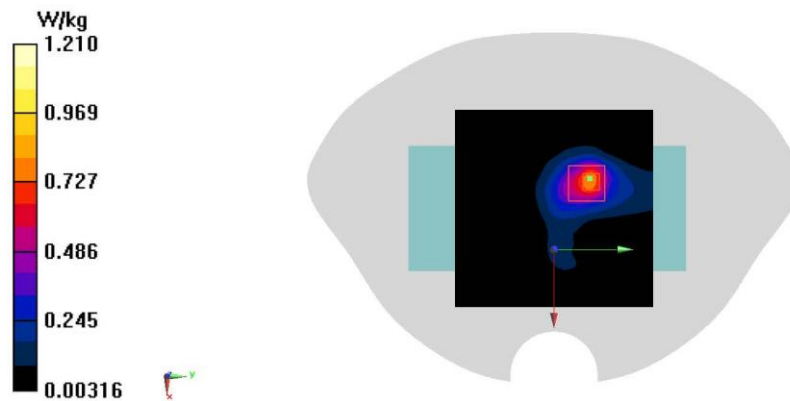
Zoom Scan (7x7x7)/Cube 0: Measurement grid: $dx=5$ mm, $dy=5$ mm, $dz=5$ mm

Reference Value = 10.25 V/m; Power Drift = 0.07 dB

Peak SAR (extrapolated) = 1.63 W/kg

SAR(1 g) = 0.712 W/kg; SAR(10 g) = 0.323 W/kg

Maximum value of SAR (measured) = 1.21 W/kg



LTE B12 Head

Date: 10/25/2024

Electronics: DAE4 Sn1331

Medium: H700-6000M

Medium parameters used (interpolated): $f = 707.5$ MHz; $\sigma = 0.844$ S/m; $\epsilon_r = 44.64$; $\rho = 1000$ kg/m³

Ambient Temperature: 23.3°C Liquid Temperature: 22.5°C

Communication System: UID 0, LTE Band12 (0) Frequency: 707.5 MHz Duty Cycle: 1:1

Probe: EX3DV4 - SN7673 ConvF(10.45, 10.45, 10.45)

Area Scan (81x141x1): Interpolated grid: $dx=1.500$ mm, $dy=1.500$ mm

Maximum value of SAR (interpolated) = 0.862 W/kg

Zoom Scan (5x5x7)/Cube 0: Measurement grid: $dx=8$ mm, $dy=8$ mm, $dz=5$ mm

Reference Value = 19.47 V/m; Power Drift = 0.07 dB

Peak SAR (extrapolated) = 1.61 W/kg

SAR(1 g) = 0.684 W/kg; SAR(10 g) = 0.371 W/kg

Maximum value of SAR (measured) = 1.22 W/kg



LTE B12 Body

Date: 10/25/2024

Electronics: DAE4 Sn1331

Medium: H700-6000M

Medium parameters used (interpolated): $f = 707.5$ MHz; $\sigma = 0.844$ S/m; $\epsilon_r = 44.64$; $\rho = 1000$ kg/m³

Ambient Temperature: 23.3°C Liquid Temperature: 22.5°C

Communication System: UID 0, LTE Band12 (0) Frequency: 707.5 MHz Duty Cycle: 1:1

Probe: EX3DV4 - SN7673 ConvF(10.45, 10.45, 10.45);

Area Scan (81x121x1): Interpolated grid: $dx=1.500$ mm, $dy=1.500$ mm

Maximum value of SAR (interpolated) = 0.366 W/kg

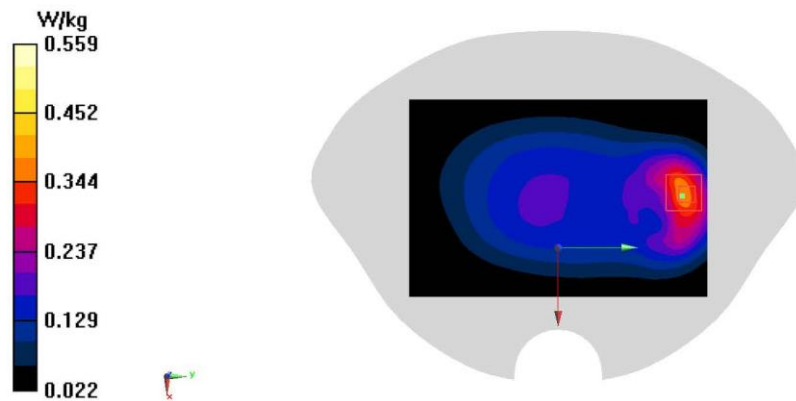
Zoom Scan (5x5x7)/Cube 0: Measurement grid: $dx=8$ mm, $dy=8$ mm, $dz=5$ mm

Reference Value = 14.10 V/m; Power Drift = 0.12 dB

Peak SAR (extrapolated) = 0.693 W/kg

SAR(1 g) = 0.356 W/kg; SAR(10 g) = 0.202 W/kg

Maximum value of SAR (measured) = 0.559 W/kg



LTE B13 Head

Date: 10/25/2024

Electronics: DAE4 Sn1331

Medium: H700-6000M

Medium parameters used (interpolated): $f = 782$ MHz; $\sigma = 0.875$ S/m; $\epsilon_r = 44.383$; $\rho = 1000$ kg/m³

Ambient Temperature: 23.3°C Liquid Temperature: 22.5°C

Communication System: UID 0, LTE Band13 (0) Frequency: 782 MHz Duty Cycle: 1:1

Probe: EX3DV4 - SN7673 ConvF(10.45, 10.45, 10.45)

Area Scan (81x141x1): Interpolated grid: $dx=1.500$ mm, $dy=1.500$ mm

Maximum value of SAR (interpolated) = 0.891 W/kg

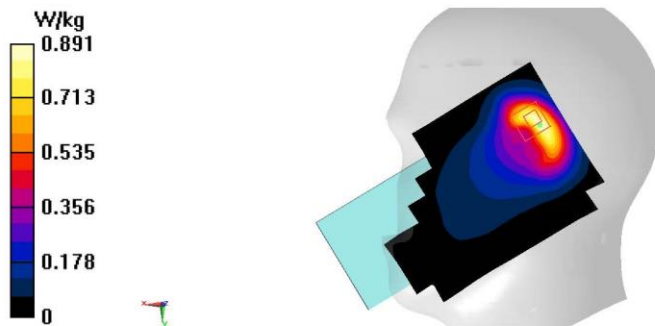
Zoom Scan (6x5x7)/Cube 0: Measurement grid: $dx=8$ mm, $dy=8$ mm, $dz=5$ mm

Reference Value = 18.57 V/m; Power Drift = 0.03 dB

Peak SAR (extrapolated) = 1.42 W/kg

SAR(1 g) = 0.591 W/kg; SAR(10 g) = 0.315 W/kg

Maximum value of SAR (measured) = 1.06 W/kg



LTE B13 Body

Date: 10/25/2024

Electronics: DAE4 Sn1331

Medium: H700-6000M

Medium parameters used (interpolated): $f = 782 \text{ MHz}$; $\sigma = 0.875 \text{ S/m}$; $\epsilon_r = 44.383$; $\rho = 1000 \text{ kg/m}^3$

Ambient Temperature: 23.3°C Liquid Temperature: 22.5°C

Communication System: UID 0, LTE Band13 (0) Frequency: 782 MHz Duty Cycle: 1:1

Probe: EX3DV4 - SN7673 ConvF(10.45, 10.45, 10.45);

Area Scan (81x81x1): Interpolated grid: $dx=1.500 \text{ mm}$, $dy=1.500 \text{ mm}$

Maximum value of SAR (interpolated) = 0.392 W/kg

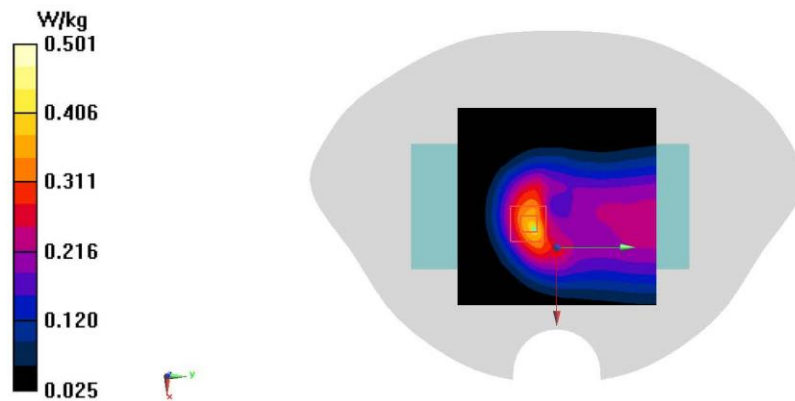
Zoom Scan (5x5x7)/Cube 0: Measurement grid: $dx=8\text{mm}$, $dy=8\text{mm}$, $dz=5\text{mm}$

Reference Value = 13.53 V/m; Power Drift = 0.00 dB

Peak SAR (extrapolated) = 0.652 W/kg

SAR(1 g) = 0.357 W/kg; SAR(10 g) = 0.208 W/kg

Maximum value of SAR (measured) = 0.501 W/kg



LTE B14 Head

Date: 10/25/2024

Electronics: DAE4 Sn1331

Medium: H700-6000M

Medium parameters used (interpolated): $f = 793$ MHz; $\sigma = 0.881$ S/m; $\epsilon_r = 44.334$; $\rho = 1000$ kg/m³

Ambient Temperature: 23.3°C Liquid Temperature: 22.5°C

Communication System: UID 0, LTE Band14 (0) Frequency: 793 MHz Duty Cycle: 1:1

Probe: EX3DV4 - SN7673 ConvF(10.45, 10.45, 10.45)

Area Scan (81x141x1): Interpolated grid: $dx=1.500$ mm, $dy=1.500$ mm

Maximum value of SAR (interpolated) = 0.867 W/kg

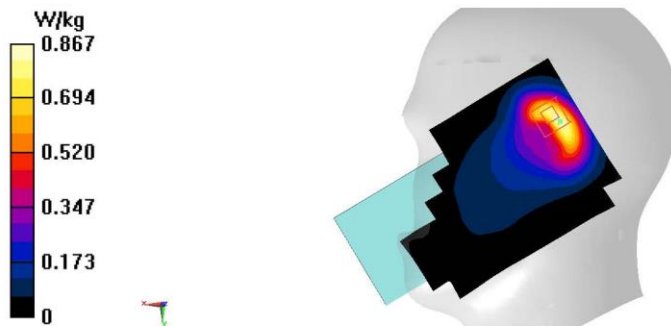
Zoom Scan (6x5x7)/Cube 0: Measurement grid: $dx=8$ mm, $dy=8$ mm, $dz=5$ mm

Reference Value = 17.42 V/m; Power Drift = 0.15 dB

Peak SAR (extrapolated) = 1.31 W/kg

SAR(1 g) = 0.557 W/kg; SAR(10 g) = 0.297 W/kg

Maximum value of SAR (measured) = 0.931 W/kg



LTE B14 Body

Date: 10/25/2024

Electronics: DAE4 Sn1331

Medium: H700-6000M

Medium parameters used (interpolated): $f = 793$ MHz; $\sigma = 0.881$ S/m; $\epsilon_r = 44.334$; $\rho = 1000$ kg/m³

Ambient Temperature: 23.3°C Liquid Temperature: 22.5°C

Communication System: UID 0, LTE Band14 (0) Frequency: 793 MHz Duty Cycle: 1:1

Probe: EX3DV4 - SN7673 ConvF(10.45, 10.45, 10.45);

Area Scan (81x81x1): Interpolated grid: $dx=1.500$ mm, $dy=1.500$ mm

Maximum value of SAR (interpolated) = 0.362 W/kg

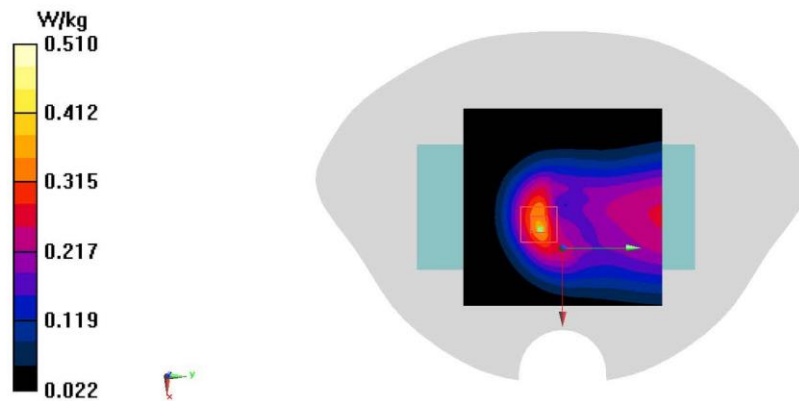
Zoom Scan (5x5x7)/Cube 0: Measurement grid: $dx=8$ mm, $dy=8$ mm, $dz=5$ mm

Reference Value = 13.06 V/m; Power Drift = 0.15 dB

Peak SAR (extrapolated) = 0.618 W/kg

SAR(1 g) = 0.342 W/kg; SAR(10 g) = 0.199 W/kg

Maximum value of SAR (measured) = 0.510 W/kg



LTE B25 Head

Date: 11/12/2024

Electronics: DAE4 Sn1331

Medium: H700-6000M

Medium parameters used (interpolated): $f = 1882.5$ MHz; $\sigma = 1.428$ S/m; $\epsilon_r = 41.853$; $\rho = 1000$ kg/m³

Ambient Temperature: 23.3°C Liquid Temperature: 22.5°C

Communication System: UID 0, LTE Band25 (0) Frequency: 1882.5 MHz Duty Cycle: 1:1

Probe: EX3DV4 - SN7673 ConvF(8.1, 8.1, 8.1)

Area Scan (81x141x1): Interpolated grid: $dx=1.500$ mm, $dy=1.500$ mm

Maximum value of SAR (interpolated) = 0.562 W/kg

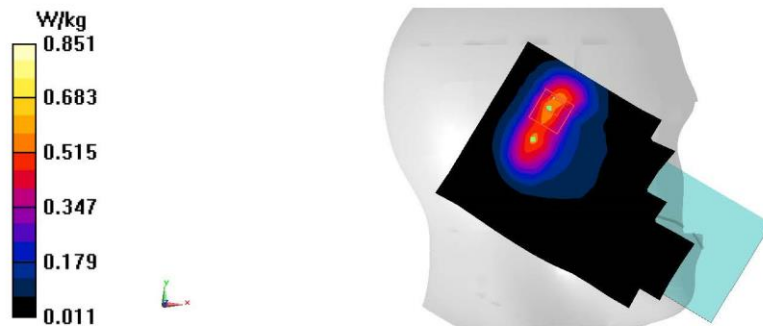
Zoom Scan (6x6x7)/Cube 0: Measurement grid: $dx=8$ mm, $dy=8$ mm, $dz=5$ mm

Reference Value = 17.01 V/m; Power Drift = 0.12 dB

Peak SAR (extrapolated) = 1.11 W/kg

SAR(1 g) = 0.571 W/kg; SAR(10 g) = 0.302 W/kg

Maximum value of SAR (measured) = 0.851 W/kg



LTE B25 Body

Date: 11/12/2024

Electronics: DAE4 Sn1331

Medium: H700-6000M

Medium parameters used (interpolated): $f = 1882.5$ MHz; $\sigma = 1.428$ S/m; $\epsilon_r = 41.853$; $\rho = 1000$ kg/m³

Ambient Temperature: 23.3°C Liquid Temperature: 22.5°C

Communication System: UID 0, LTE Band25 (0) Frequency: 1882.5 MHz Duty Cycle: 1:1

Probe: EX3DV4 - SN7673 ConvF(8.1, 8.1, 8.1)

Area Scan (81x81x1): Interpolated grid: dx=1.500 mm, dy=1.500 mm

Maximum value of SAR (interpolated) = 0.875 W/kg

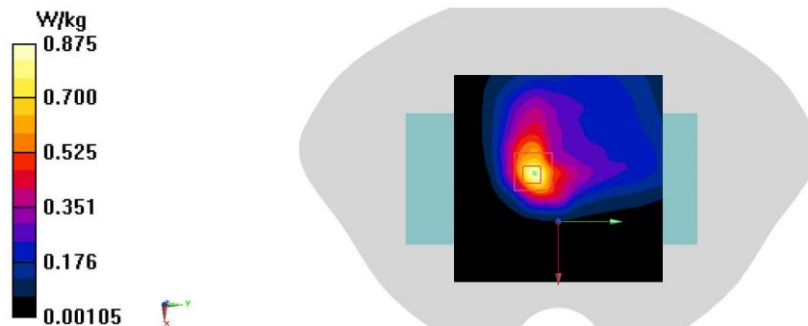
Zoom Scan (5x5x7)/Cube 0: Measurement grid: dx=8mm, dy=8mm, dz=5mm

Reference Value = 15.85 V/m; Power Drift = -0.01 dB

Peak SAR (extrapolated) = 0.972 W/kg

SAR(1 g) = 0.498 W/kg; SAR(10 g) = 0.266 W/kg

Maximum value of SAR (measured) = 0.746 W/kg



LTE B26 Head

Date: 10/29/2024

Electronics: DAE4 Sn1331

Medium: H700-6000M

Medium parameters used (interpolated): $f = 831.5$ MHz; $\sigma = 0.854$ S/m; $\epsilon_r = 44.24$; $\rho = 1000$ kg/m³

Ambient Temperature: 23.3°C Liquid Temperature: 22.5°C

Communication System: UID 0, LTE Band26 (0) Frequency: 831.5 MHz Duty Cycle: 1:1

Probe: EX3DV4 - SN7673 ConvF(10.45, 10.45, 10.45)

Area Scan (81x141x1): Interpolated grid: $dx=1.500$ mm, $dy=1.500$ mm

Maximum value of SAR (interpolated) = 0.905 W/kg

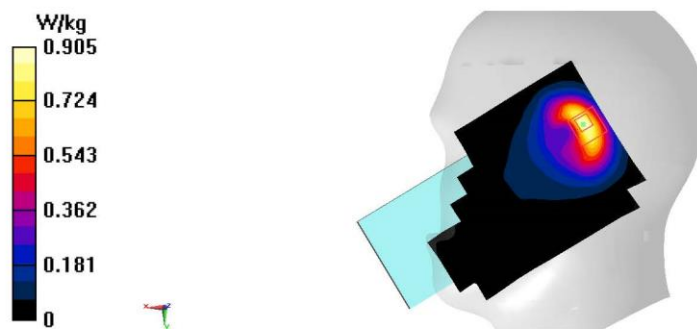
Zoom Scan (5x5x7)/Cube 0: Measurement grid: $dx=8$ mm, $dy=8$ mm, $dz=5$ mm

Reference Value = 20.12 V/m; Power Drift = -0.03 dB

Peak SAR (extrapolated) = 1.25 W/kg

SAR(1 g) = 0.547 W/kg; SAR(10 g) = 0.288 W/kg

Maximum value of SAR (measured) = 0.967 W/kg



LTE B26 Body

Date: 10/29/2024

Electronics: DAE4 Sn1331

Medium: H700-6000M

Medium parameters used (interpolated): $f = 831.5$ MHz; $\sigma = 0.854$ S/m; $\epsilon_r = 44.24$; $\rho = 1000$ kg/m³

Ambient Temperature: 23.3°C Liquid Temperature: 22.5°C

Communication System: UID 0, LTE Band26 (0) Frequency: 831.5 MHz Duty Cycle: 1:1

Probe: EX3DV4 - SN7673 ConvF(10.45, 10.45, 10.45)

Area Scan (81x81x1): Interpolated grid: $dx=1.500$ mm, $dy=1.500$ mm

Maximum value of SAR (interpolated) = 0.477 W/kg

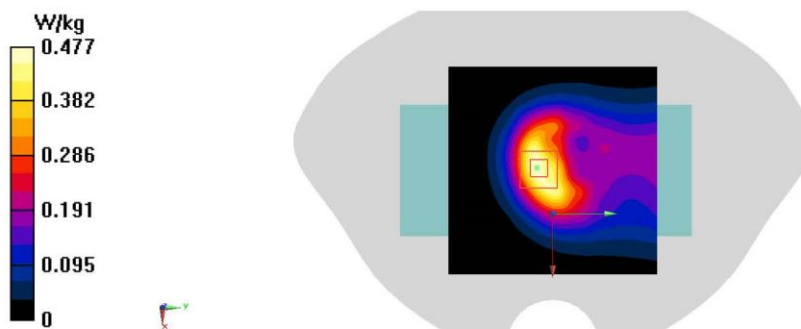
Zoom Scan (5x5x7)/Cube 0: Measurement grid: $dx=8$ mm, $dy=8$ mm, $dz=5$ mm

Reference Value = 19.01 V/m; Power Drift = -0.02 dB

Peak SAR (extrapolated) = 0.662 W/kg

SAR(1 g) = 0.360 W/kg; SAR(10 g) = 0.205 W/kg

Maximum value of SAR (measured) = 0.547 W/kg



LTE B30 Head

Date: 11/14/2024

Electronics: DAE4 Sn1331

Medium: H700-6000M

Medium parameters used: $f = 2310$ MHz; $\sigma = 1.737$ S/m; $\epsilon_r = 41.11$; $\rho = 1000$ kg/m³

Ambient Temperature: 23.3°C Liquid Temperature: 22.5°C

Communication System: UID 0, LTE Band30 (0) Frequency: 2310 MHz Duty Cycle: 1:1

Probe: EX3DV4 - SN7673 ConvF(7.85, 7.85, 7.85)

Area Scan (81x141x1): Interpolated grid: $dx=1.500$ mm, $dy=1.500$ mm
Maximum value of SAR (interpolated) = 1.73 W/kg

Zoom Scan (5x5x7)/Cube 0: Measurement grid: $dx=8$ mm, $dy=8$ mm, $dz=5$ mm
Reference Value = 11.85 V/m; Power Drift = 0.04 dB
Peak SAR (extrapolated) = 2.08 W/kg
SAR(1 g) = 1.07 W/kg; SAR(10 g) = 0.536 W/kg
Maximum value of SAR (measured) = 1.54 W/kg



LTE B30 Body

Date: 11/14/2024

Electronics: DAE4 Sn1331

Medium: H700-6000M

Medium parameters used: $f = 2310 \text{ MHz}$; $\sigma = 1.737 \text{ S/m}$; $\epsilon_r = 41.11$; $\rho = 1000 \text{ kg/m}^3$

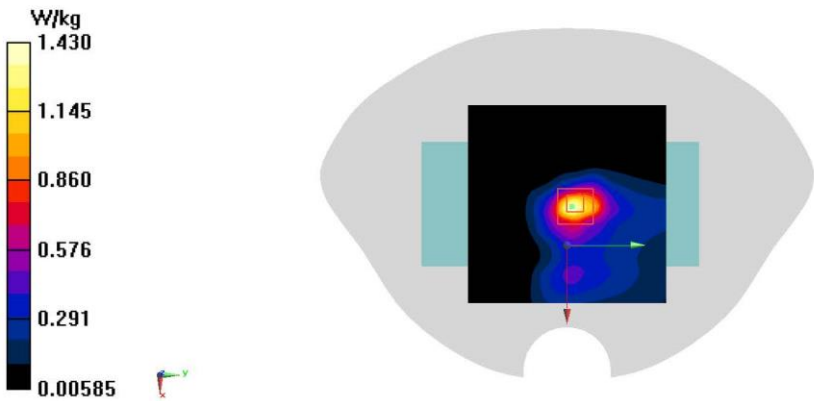
Ambient Temperature: 23.3°C Liquid Temperature: 22.5°C

Communication System: UID 0, LTE Band30 (0) Frequency: 2310 MHz Duty Cycle: 1:1

Probe: EX3DV4 - SN7673 ConvF(7.85, 7.85, 7.85);

Area Scan (81x81x1): Interpolated grid: $dx=1.500 \text{ mm}$, $dy=1.500 \text{ mm}$
Maximum value of SAR (interpolated) = 1.43 W/kg

Zoom Scan (5x5x7)/Cube 0: Measurement grid: $dx=8\text{mm}$, $dy=8\text{mm}$, $dz=5\text{mm}$
Reference Value = 23.26 V/m; Power Drift = -0.09 dB
Peak SAR (extrapolated) = 1.79 W/kg
SAR(1 g) = 0.890 W/kg; SAR(10 g) = 0.428 W/kg
Maximum value of SAR (measured) = 1.43 W/kg



LTE B38 Head

Date: 11/15/2024

Electronics: DAE4 Sn1331

Medium: H700-6000M

Medium parameters used: $f = 2595$ MHz; $\sigma = 2.055$ S/m; $\epsilon_r = 40.555$; $\rho = 1000$ kg/m³

Ambient Temperature: 23.3°C Liquid Temperature: 22.5°C

Communication System: UID 0, LTE Band38 20M (0) Frequency: 2595 MHz Duty Cycle: 1:1.5787

Probe: EX3DV4 - SN7673 ConvF(7.44, 7.44, 7.44)

Area Scan (101x171x1): Interpolated grid: $dx=1.200$ mm, $dy=1.200$ mm
Maximum value of SAR (interpolated) = 0.922 W/kg

Zoom Scan (8x8x7)/Cube 0: Measurement grid: $dx=5$ mm, $dy=5$ mm, $dz=5$ mm
Reference Value = 5.063 V/m; Power Drift = 0.18 dB
Peak SAR (extrapolated) = 1.30 W/kg
SAR(1 g) = 0.524 W/kg; SAR(10 g) = 0.237 W/kg
Maximum value of SAR (measured) = 0.975 W/kg



LTE B38 Body

Date: 11/15/2024

Electronics: DAE4 Sn1331

Medium: H700-6000M

Medium parameters used: $f = 2595$ MHz; $\sigma = 2.055$ S/m; $\epsilon_r = 40.555$; $\rho = 1000$ kg/m³

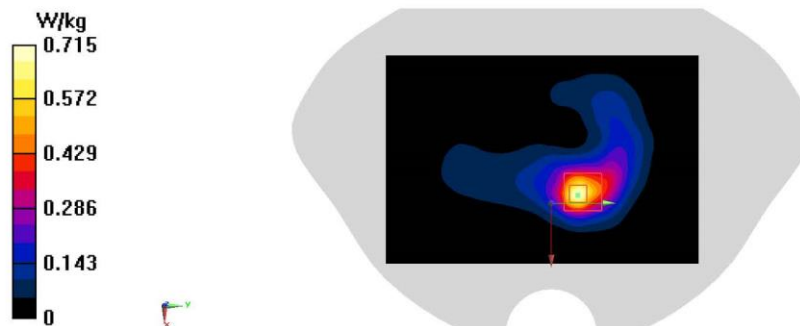
Ambient Temperature: 23.3°C Liquid Temperature: 22.5°C

Communication System: UID 0, LTE Band38 20M (0) Frequency: 2595 MHz Duty Cycle: 1:1.5787

Probe: EX3DV4 - SN7673 ConvF(7.44, 7.44, 7.44)

Area Scan (101x151x1): Interpolated grid: $dx=1.200$ mm, $dy=1.200$ mm
Maximum value of SAR (interpolated) = 0.715 W/kg

Zoom Scan (7x7x7)/Cube 0: Measurement grid: $dx=5$ mm, $dy=5$ mm, $dz=5$ mm
Reference Value = 8.110 V/m; Power Drift = -0.12 dB
Peak SAR (extrapolated) = 1.32 W/kg
SAR(1 g) = 0.575 W/kg; SAR(10 g) = 0.263 W/kg
Maximum value of SAR (measured) = 1.01 W/kg



LTE B41 pc2 Head

Date: 11/15/2024

Electronics: DAE4 Sn1331

Medium: H700-6000M

Medium parameters used (interpolated): $f = 2593$ MHz; $\sigma = 2.054$ S/m; $\epsilon_r = 40.55$; $\rho = 1000$ kg/m³

Ambient Temperature: 23.3°C Liquid Temperature: 22.5°C

Communication System: UID 0, LTE Band41 PC2 (0) Frequency: 2593 MHz Duty Cycle: 1:2.30994

Probe: EX3DV4 - SN7673 ConvF(7.44, 7.44, 7.44)

Area Scan (101x171x1): Interpolated grid: $dx=1.200$ mm, $dy=1.200$ mm

Maximum value of SAR (interpolated) = 1.01 W/kg

Zoom Scan (8x8x7)/Cube 0: Measurement grid: $dx=5$ mm, $dy=5$ mm, $dz=5$ mm

Reference Value = 5.365 V/m; Power Drift = 0.11 dB

Peak SAR (extrapolated) = 1.44 W/kg

SAR(1 g) = 0.575 W/kg; SAR(10 g) = 0.259 W/kg

Maximum value of SAR (measured) = 1.07 W/kg



LTE B41 pc2 Body

Date: 11/15/2024

Electronics: DAE4 Sn1331

Medium: H700-6000M

Medium parameters used (interpolated): $f = 2593$ MHz; $\sigma = 2.054$ S/m; $\epsilon_r = 40.55$; $\rho = 1000$ kg/m³

Ambient Temperature: 23.3°C Liquid Temperature: 22.5°C

Communication System: UID 0, LTE Band41 PC2 (0) Frequency: 2593 MHz Duty Cycle: 1:2.30994

Probe: EX3DV4 - SN7673 ConvF(7.44, 7.44, 7.44)

Area Scan (101x151x1): Interpolated grid: $dx=1.200$ mm, $dy=1.200$ mm

Maximum value of SAR (interpolated) = 1.07 W/kg

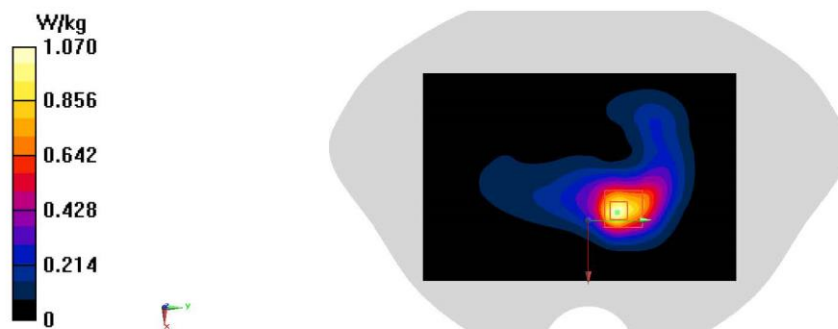
Zoom Scan (7x7x7)/Cube 0: Measurement grid: $dx=5$ mm, $dy=5$ mm, $dz=5$ mm

Reference Value = 10.42 V/m; Power Drift = -0.15 dB

Peak SAR (extrapolated) = 2.11 W/kg

SAR(1 g) = 0.920 W/kg; SAR(10 g) = 0.435 W/kg

Maximum value of SAR (measured) = 1.63 W/kg



LTE B41 pc3 Head

Date: 11/15/2024

Electronics: DAE4 Sn1331

Medium: H700-6000M

Medium parameters used (interpolated): $f = 2593$ MHz; $\sigma = 2.054$ S/m; $\epsilon_r = 40.55$; $\rho = 1000$ kg/m³

Ambient Temperature: 23.3°C Liquid Temperature: 22.5°C

Communication System: UID 0, LTE Band41 PC3 (0) Frequency: 2593 MHz Duty Cycle: 1:1.5787

Probe: EX3DV4 - SN7673 ConvF(7.44, 7.44, 7.44)

Area Scan (101x171x1): Interpolated grid: $dx=1.200$ mm, $dy=1.200$ mm

Maximum value of SAR (interpolated) = 0.764 W/kg

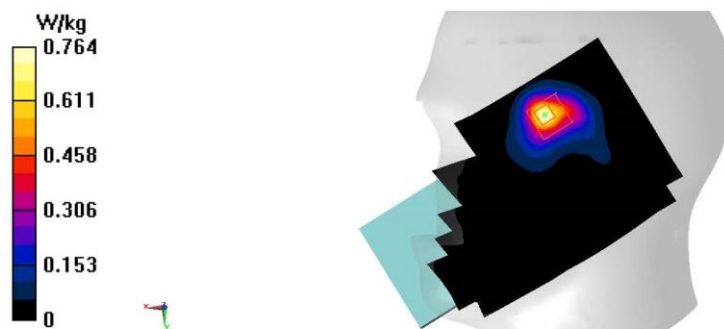
Zoom Scan (8x8x7)/Cube 0: Measurement grid: $dx=5$ mm, $dy=5$ mm, $dz=5$ mm

Reference Value = 4.372 V/m; Power Drift = 0.18 dB

Peak SAR (extrapolated) = 1.07 W/kg

SAR(1 g) = 0.429 W/kg; SAR(10 g) = 0.194 W/kg

Maximum value of SAR (measured) = 0.792 W/kg



LTE B41 pc3 Body

Date: 11/15/2024

Electronics: DAE4 Sn1331

Medium: H700-6000M

Medium parameters used (interpolated): $f = 2593$ MHz; $\sigma = 2.054$ S/m; $\epsilon_r = 40.55$; $\rho = 1000$ kg/m³

Ambient Temperature: 23.3°C Liquid Temperature: 22.5°C

Communication System: UID 0, LTE Band41 PC3 (0) Frequency: 2593 MHz Duty Cycle: 1:1.5787

Probe: EX3DV4 - SN7673 ConvF(7.44, 7.44, 7.44)

Area Scan (101x151x1): Interpolated grid: $dx=1.200$ mm, $dy=1.200$ mm

Maximum value of SAR (interpolated) = 0.700 W/kg

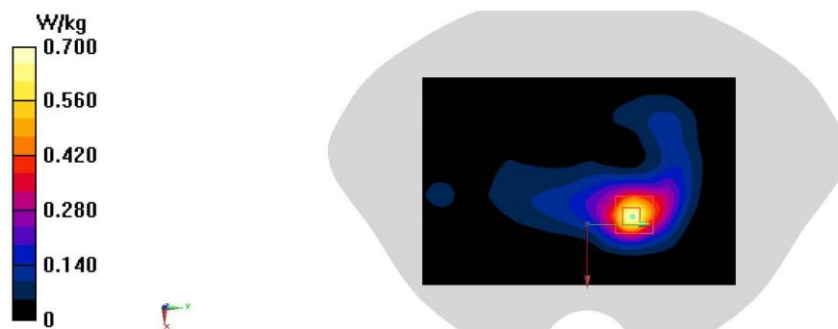
Zoom Scan (7x7x7)/Cube 0: Measurement grid: $dx=5$ mm, $dy=5$ mm, $dz=5$ mm

Reference Value = 7.300 V/m; Power Drift = -0.19 dB

Peak SAR (extrapolated) = 1.37 W/kg

SAR(1 g) = 0.591 W/kg; SAR(10 g) = 0.273 W/kg

Maximum value of SAR (measured) = 1.02 W/kg



LTE B66 Head

Date: 11/9/2024

Electronics: DAE4 Sn1331

Medium: H700-6000M

Medium parameters used: $f = 1745$ MHz; $\sigma = 1.338$ S/m; $\epsilon_r = 42.038$; $\rho = 1000$ kg/m³

Ambient Temperature: 23.3°C Liquid Temperature: 22.5°C

Communication System: UID 0, LTE Band66 (0) Frequency: 1745 MHz Duty Cycle: 1:1

Probe: EX3DV4 - SN7673 ConvF(8.45, 8.45, 8.45)

Area Scan (81x141x1): Interpolated grid: $dx=1.500$ mm, $dy=1.500$ mm
Maximum value of SAR (interpolated) = 0.451 W/kg

Zoom Scan (6x6x7)/Cube 0: Measurement grid: $dx=8$ mm, $dy=8$ mm, $dz=5$ mm
Reference Value = 7.208 V/m; Power Drift = -0.11 dB
Peak SAR (extrapolated) = 0.755 W/kg
SAR(1 g) = 0.410 W/kg; SAR(10 g) = 0.223 W/kg
Maximum value of SAR (measured) = 0.586 W/kg



LTEB66 Body

Date: 11/9/2024

Electronics: DAE4 Sn1331

Medium: H700-6000M

Medium parameters used: $f = 1770 \text{ MHz}$; $\sigma = 1.354 \text{ S/m}$; $\epsilon_r = 42.029$; $\rho = 1000 \text{ kg/m}^3$

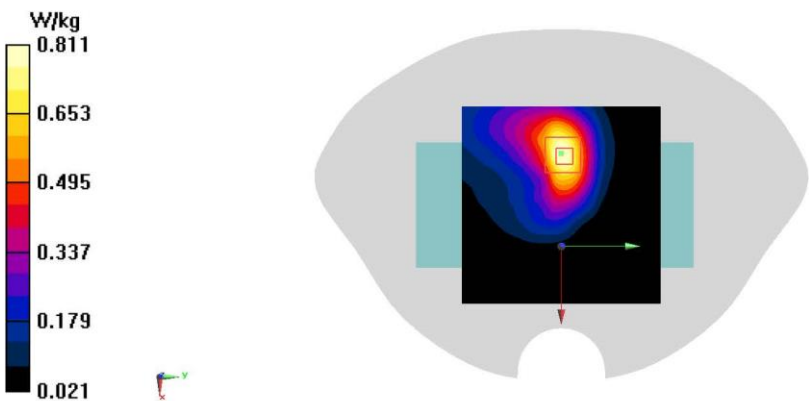
Ambient Temperature: 23.3°C Liquid Temperature: 22.5°C

Communication System: UID 0, LTE Band66 (0) Frequency: 1770 MHz Duty Cycle: 1:1

Probe: EX3DV4 - SN7673 ConvF(8.45, 8.45, 8.45);

Area Scan (81x81x1): Interpolated grid: $dx=1.500 \text{ mm}$, $dy=1.500 \text{ mm}$
Maximum value of SAR (interpolated) = 0.826 W/kg

Zoom Scan (5x5x7)/Cube 0: Measurement grid: $dx=8\text{mm}$, $dy=8\text{mm}$, $dz=5\text{mm}$
Reference Value = 13.36 V/m; Power Drift = 0.03 dB
Peak SAR (extrapolated) = 0.960 W/kg
SAR(1 g) = 0.582 W/kg; SAR(10 g) = 0.345 W/kg
Maximum value of SAR (measured) = 0.811 W/kg



LTE B71 Head

Date: 10/25/2024

Electronics: DAE4 Sn1331

Medium: H700-6000M

Medium parameters used (extrapolated): $f = 683$ MHz; $\sigma = 0.835$ S/m; $\epsilon_r = 44.684$; $\rho = 1000$ kg/m³

Ambient Temperature: 23.3°C Liquid Temperature: 22.5°C

Communication System: UID 0, LTE Band71 (0) Frequency: 683 MHz Duty Cycle: 1:1

Probe: EX3DV4 - SN7673 ConvF(10.45, 10.45, 10.45)

Area Scan (81x141x1): Interpolated grid: $dx=1.500$ mm, $dy=1.500$ mm

Maximum value of SAR (interpolated) = 0.707 W/kg

Zoom Scan (6x6x7)/Cube 0: Measurement grid: $dx=8$ mm, $dy=8$ mm, $dz=5$ mm

Reference Value = 16.47 V/m; Power Drift = 0.03 dB

Peak SAR (extrapolated) = 0.858 W/kg

SAR(1 g) = 0.351 W/kg; SAR(10 g) = 0.187 W/kg

Maximum value of SAR (measured) = 0.616 W/kg



LTE B71 Body

Date: 10/25/2024

Electronics: DAE4 Sn1331

Medium: H700-6000M

Medium parameters used (extrapolated): $f = 683$ MHz; $\sigma = 0.835$ S/m; $\epsilon_r = 44.684$; $\rho = 1000$ kg/m³

Ambient Temperature: 23.3°C Liquid Temperature: 22.5°C

Communication System: UID 0, LTE Band71 (0) Frequency: 683 MHz Duty Cycle: 1:1

Probe: EX3DV4 - SN7673 ConvF(10.45, 10.45, 10.45)

Area Scan (51x81x1): Interpolated grid: $dx=1.500$ mm, $dy=1.500$ mm

Maximum value of SAR (interpolated) = 0.195 W/kg

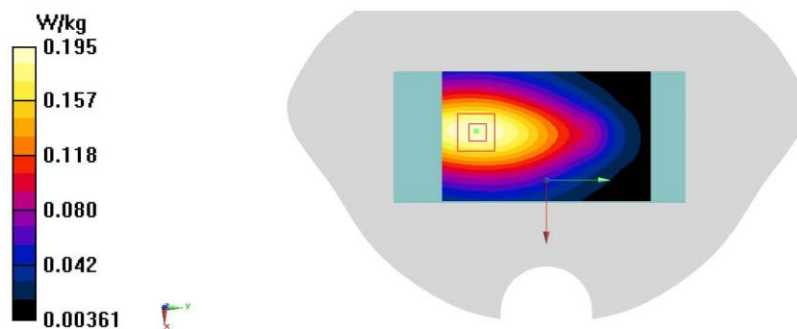
Zoom Scan (5x5x7)/Cube 0: Measurement grid: $dx=8$ mm, $dy=8$ mm, $dz=5$ mm

Reference Value = 12.76 V/m; Power Drift = 0.00 dB

Peak SAR (extrapolated) = 0.286 W/kg

SAR(1 g) = 0.190 W/kg; SAR(10 g) = 0.132 W/kg

Maximum value of SAR (measured) = 0.249 W/kg



N2 Head

Date: 11/12/2024

Electronics: DAE4 Sn1331

Medium: H700-6000M

Medium parameters used: $f = 1880$ MHz; $\sigma = 1.427$ S/m; $\epsilon_r = 41.859$; $\rho = 1000$ kg/m³

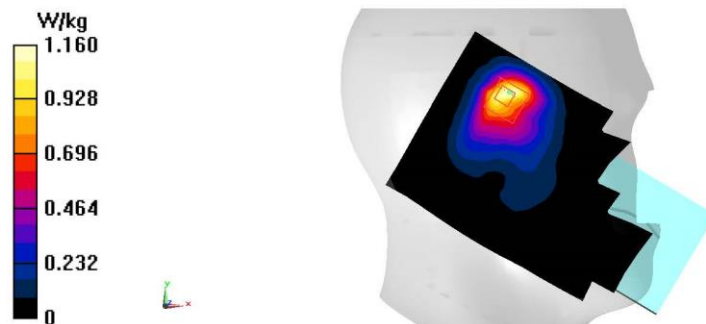
Ambient Temperature: 23.3°C Liquid Temperature: 22.5°C

Communication System: UID 0, 5G n2 (0) Frequency: 1880 MHz Duty Cycle: 1:1

Probe: EX3DV4 - SN7673 ConvF(8.1, 8.1, 8.1)

Area Scan (81x141x1): Interpolated grid: $dx=1.500$ mm, $dy=1.500$ mm
Maximum value of SAR (interpolated) = 1.16 W/kg

Zoom Scan (6x5x7)/Cube 0: Measurement grid: $dx=8$ mm, $dy=8$ mm, $dz=5$ mm
Reference Value = 12.99 V/m; Power Drift = 0.03 dB
Peak SAR (extrapolated) = 1.37 W/kg
SAR(1 g) = 0.689 W/kg; SAR(10 g) = 0.367 W/kg
Maximum value of SAR (measured) = 1.09 W/kg



N2 Body

Date: 11/12/2024

Electronics: DAE4 Sn1331

Medium: H700-6000M

Medium parameters used: $f = 1880$ MHz; $\sigma = 1.427$ S/m; $\epsilon_r = 41.859$; $\rho = 1000$ kg/m³

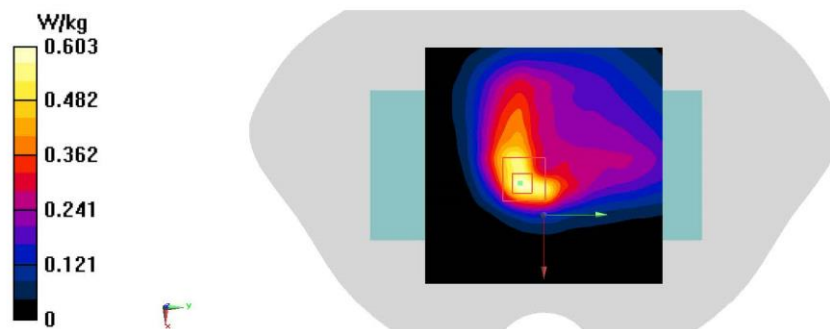
Ambient Temperature: 23.3°C Liquid Temperature: 22.5°C

Communication System: UID 0, 5G n2 (0) Frequency: 1880 MHz Duty Cycle: 1:1

Probe: EX3DV4 - SN7673 ConvF(8.1, 8.1, 8.1)

Area Scan (81x81x1): Interpolated grid: $dx=1.500$ mm, $dy=1.500$ mm
Maximum value of SAR (interpolated) = 0.603 W/kg

Zoom Scan (5x5x7)/Cube 0: Measurement grid: $dx=8$ mm, $dy=8$ mm, $dz=5$ mm
Reference Value = 13.93 V/m; Power Drift = -0.17 dB
Peak SAR (extrapolated) = 1.08 W/kg
SAR(1 g) = 0.550 W/kg; SAR(10 g) = 0.289 W/kg
Maximum value of SAR (measured) = 0.875 W/kg



N5 Head

Date: 10/29/2024

Electronics: DAE4 Sn1331

Medium: H700-6000M

Medium parameters used (interpolated): $f = 826.5$ MHz; $\sigma = 0.851$ S/m; $\epsilon_r = 44.26$; $\rho = 1000$ kg/m³

Ambient Temperature: 23.3°C Liquid Temperature: 22.5°C

Communication System: UID 0, 5G N5 (0) Frequency: 826.5 MHz Duty Cycle: 1:1

Probe: EX3DV4 - SN7673 ConvF(10.45, 10.45, 10.45)

Area Scan (81x141x1): Interpolated grid: $dx=1.500$ mm, $dy=1.500$ mm

Maximum value of SAR (interpolated) = 0.903 W/kg

Zoom Scan (5x5x7)/Cube 0: Measurement grid: $dx=8$ mm, $dy=8$ mm, $dz=5$ mm

Reference Value = 18.30 V/m; Power Drift = -0.08 dB

Peak SAR (extrapolated) = 1.27 W/kg

SAR(1 g) = 0.498 W/kg; SAR(10 g) = 0.252 W/kg

Maximum value of SAR (measured) = 0.937 W/kg

