

# Lenovo Tab Pen Pro

Quick Start Guide & Safety, Warranty

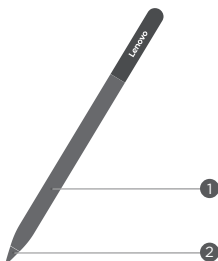
Lenovo



# Lenovo Tab Pen Pro AP600U

- The images in this guide are for reference only.
- Please refer to the actual.

## Overview



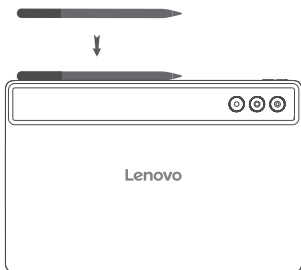
① 360° touch key

② Replaceable tip

## Pairing and charging

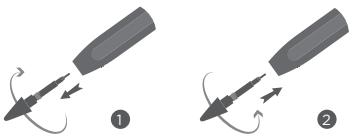
Before first use, turn on the tablet and then attach the pen to the charging area for pairing.

After use, attach the pen to the charging area for charging and storage.

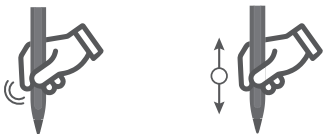


## Replacing the tip

1. Rotate the tip counterclockwise to remove it.
2. Rotate the new tip clockwise to secure it.



## Gesture touch control



- Double-tap the touch area of the pen body to switch between brush and eraser.
- Slide up on the touch area of the pen body to copy the selected content, slide down to paste the copied content.

Note: More function options in different scenarios



### Warning

- The firmware upgrade will require the pen to be magnetically attached to the paired tablet.
- The pen will enter the battery protection mode if it is not used for a long time. Charge the pen for 5-10 minutes before use.  
Note: If the tablet is powered off, you need to connect it to the charger for wireless pen charging.
- The tip may wear out during daily writing, especially on the rough film surface.
- Please be cautious when using the pen. The pen contains sensitive electronic components. Dropping it may cause damage.
- Keep the pen and detachable tips out of the reach of children. Otherwise, children may damage them or swallow the tips by mistake, which may cause suffocation or other risks.

# Important safety and handling information

## Plastic bag notice

**Danger:** Plastic bags can be dangerous. Keep plastic bags away from babies and children to avoid danger of suffocation.

## Safety instructions for parents and adult supervisors

The device is not a toy. As with all electrical products, precautions should be observed during handling and using of electrical products to reduce the risk of electric shock. If parents choose to allow children to use the device, they should caution his or her child about the potential hazard while using and handling the mobile device.

Parents should inspect the mobile device periodically for damage. Routinely check this mobile device to ensure that the device is working properly and is safe for children to use.

## Internal rechargeable battery warning

**Danger:** Do not attempt to replace the internal rechargeable lithium ion battery. Replacing the original battery with an incompatible type may result in an increased risk of personal injury or property damage due to explosion, excessive heat, or other risks. Do not attempt to disassemble or modify the battery.

Attempting to do so can cause a harmful explosion or battery fluid leakage.

When disposing of the battery, comply with all relevant local ordinances or regulations. Do not dispose the battery in municipal waste. Dispose used batteries according to the instructions.

The battery contains a small amount of harmful substances.

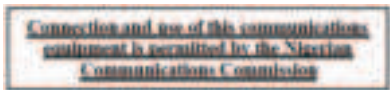
To avoid injury:

- Keep the battery away from open flames or other heat sources.
- Do not expose the battery to water, rain, or other corrosive liquids.
- Do not leave the battery in an environment with extremely high temperature.
- Avoid short-circuiting the battery.
- Do not leave the battery in an environment with extremely low air pressure. It may result in an explosion or the leakage of flammable liquid or gas from the battery. To extend battery life, we recommend charging the battery to at least 30% to 50% capacity each time, and recharging it every three months to prevent over discharge.

EurAsia compliance mark



Energy efficiency mark



Complies with  
IMDA Standards  
[Dealer's Licence No.]



XXX-XXXXXX

## Warranty and support information

### Lenovo Limited Warranty notice

This product is covered by the terms of the Lenovo Limited Warranty (LLW), version L5050010I02 08/2011. Read the LLW at [https://www.lenovo.com/warranty/llw\\_02](https://www.lenovo.com/warranty/llw_02). You can view the LLW in a number of languages from this Web site.

### Warranty information

Lenovo provides a warranty period for your device. To check the warranty status of your device purchase upgrades, go to <https://support.lenovo.com/warrantylookup>, and then select the product on-screen instructions.

### Get support

Visiting Lenovo's support website (<https://support.lenovo.com>) with the device serial number to get more Lenovo support options.

Consult Lenovo Community by visiting <http://forums.lenovo.com>

# Environmental, recycling, and disposal information

## General recycling statement

Lenovo encourages owners of information technology (IT) equipment to responsibly recycle their equipment when it is no longer needed. Lenovo offers a variety of programs and services to assist equipment owners in recycling their IT products. For information on recycling Lenovo products, go to <http://www.lenovo.com/recycling>.

## Important Battery Recycling & WEEE information



Don't dispose of your product or battery with your household waste. Refer to the User Guide that came with your product for further information, or go to <https://www.lenovo.com/recycling>

## Recycling information for Japan

Recycling and disposal information for Japan is available at: <http://www.lenovo.com/recycling/japan>

## Additional recycling statements

Additional information about recycling device components and batteries is in your User Guide. See "Accessing your User Guide" for details.

## Battery recycling marks

### Battery recycling information for Taiwan



### Battery recycling information for the United States and Canada



# Restriction of Hazardous Substances Directive (RoHS)

## Türkiye

Lenovo products sold in Türkiye, on or after June 1, 2009, meet the requirements of the former Republic of Türkiye Restriction of Hazardous Substances legislation from 30th of May 2008 and the Control of Waste Electrical and Electronic Equipment Regulations from 22nd of May 2012 (“Türkiye RoHS”).

Complies with the WEEE regulation.

## Ukraine

Lenovo products sold in Ukraine, on or after January 1, 2011, meet the requirements of the Technical Directive on Restriction of Hazardous Substances in Electric and Electronic Equipment enforced by the Government, Decision No 1057 dated 2008/12/03 (“Ukraine TR on RoHS”).

## India

Lenovo products sold in India, on or after May 1, 2012, meet the requirements of the India E-waste (Management) Rules (“IndiaRoHS”).

## Vietnam

Lenovo products sold in Vietnam, on or after September 23, 2011, meet the requirements of the Vietnam Circular 30/2011/TT-BCT (“Vietnam RoHS”).

## European Union(EU)/United Kingdom(UK)RoHS

This Lenovo product, with included parts(cables,cords,and so on)meets the requirements of EU Directive 2011/65/EU as amended by Directive 2015/863/EU and UK SI 2012 No. 3032 on the restriction of the use of certain hazardous substances in electrical and electronic equipment (“RoHS recast” or “RoHS 2” ). For more information about Lenovo progress on RoHS, go to: [https://www.lenovo.com/content/dam/lenovo/site-design/esg-document-library/global/corp-policies/materials/Lenovo\\_Commitment\\_to\\_RoHS.pdf](https://www.lenovo.com/content/dam/lenovo/site-design/esg-document-library/global/corp-policies/materials/Lenovo_Commitment_to_RoHS.pdf)

## Singapore

Lenovo products sold in Singapore, on or after June 1, 2017, meet the requirements of Government Gazette order No. S 263/2016 Restriction of Hazardous Substances in Electrical and Electronic Equipment in Singapore (“SG-RoHS”).



European Union (EU) / United Kingdom (UK)  
compliance statement




Lenovo (Singapore) Pte. Ltd declares that the radio equipment type: Wireless device is in compliance with EU Radio Equipment Directive 2014/53/EU  
Lenovo (Slovakia) Ltd declares that the radio equipment type: Wireless device is in compliance with UK Radio Equipment Regulation SI 2017 No. 1206.

The full text of the system declarations of conformity are available at:  
<https://www.lenovo.com/us/en/compliance/eu-doc> for EU  
and <https://www.lenovo.com/us/en/compliance/uk-doc> for UK.

This radio equipment operates with the following frequency bands and maximum radio-frequency power:

Model Name	Operating Frequency Range	Maximum RF output Power
Lenovo AP600U	2400-2483.5 MHz for BLE	<XXdBm
	XXX MHz for NFC	XXX dBuA/m at 3m distance
	XXX KHz	XXX dBuA/m at 3m distance

 The above information is for EU countries and UK. Please refer to the actual product for supported frequency

**Extreme heat or cold.** Don't use your device in temperatures below 0°C or above 45°C. Don't store/transport your device in temperatures below -20°C or above 60°C.

Lenovo



© Copyright Lenovo 2024.  
© Lenovo 2024.

V7.0\_20240730



7106500325

QFY

Made in China