

Installation

WiFi Adapter (For Windows)

Plug & Play automatically

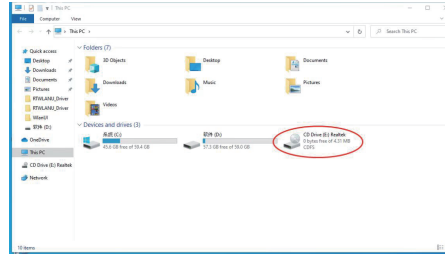
Step 1

Connect the USB interface of the WiFi adapter to computer USB port



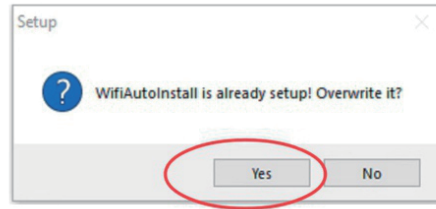
Step 2

The computer control panel opens the AutoPlay function or check "Driver_Disk" to install the driver software



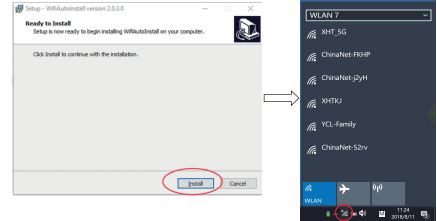
Step 3

Select proper file for your system "Windows"

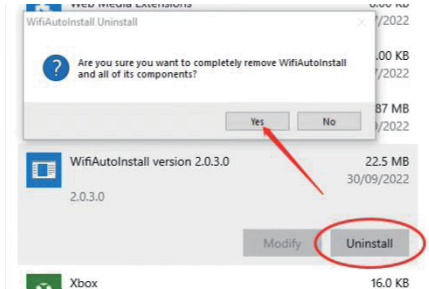


Step 4


Choose your network and enter the password

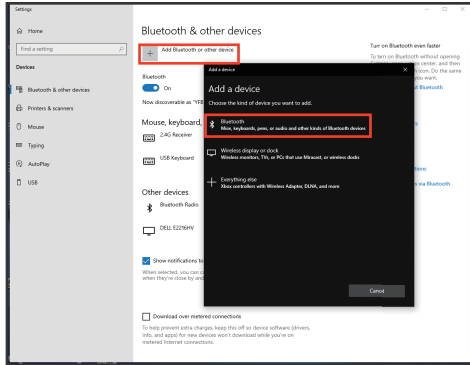


Note: Driver Uninstallation for Windows
Go to "Settings"----"Apps&features"----
WifiAutoInstall version *** "Uninstall"

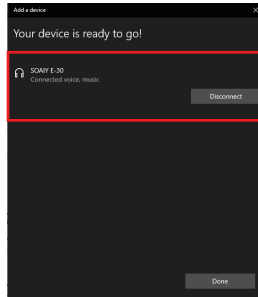
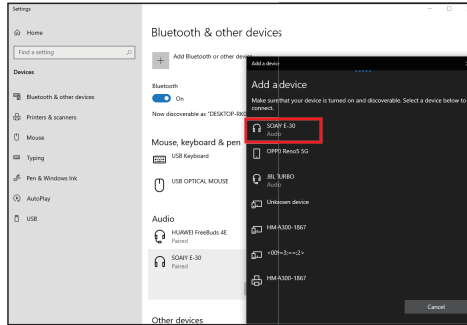


(Before use, Please install the "Driver_Disk" first)

1. Turn on Bluetooth on your device.
2. Double-click the icon  on status bar of the computer, click icon [+], then click [Bluetooth] to enter the Bluetooth devices list.

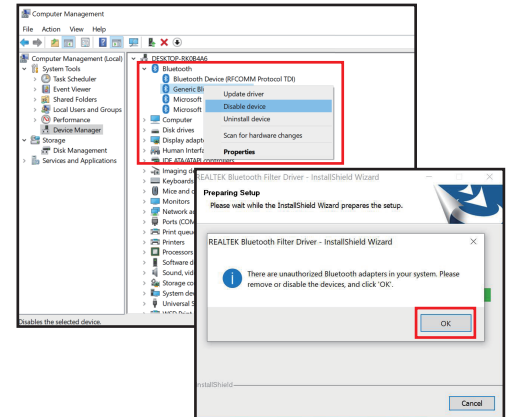


3. Find the device name in the list,click"connect"



Notices: If your computer has internal Bluetooth. Please disable it to avoid conflict. The operation is as follows:

- Plug out the adapter;
- Enter [Device Manager] to disable built-in Bluetooth function of the computer.
- Plug the adapter into the computer again, click [OK] on pop-up window to proceed with installation.



FCC warning statements:

This equipment has been tested and found to comply with the limits for a Class B digital device, pursuant to part 15 of the FCC Rules. These limits are designed to provide reasonable protection against harmful interference in a residential installation. This equipment generates, uses and can radiate radio frequency energy and, if not installed and used in accordance with the instructions, may cause harmful interference to radio communications. However, there is no guarantee that interference will not occur in a particular installation. If this equipment does cause harmful interference to radio or television reception, which can be determined by turning the equipment off and on, the user is encouraged to try to correct the interference by one or more of the following measures:

- Reorient or relocate the receiving antenna.
- Increase the separation between the equipment and receiver.
- Connect the equipment into an outlet on a circuit different from that to which the receiver is connected.
- Consult the dealer or an experienced radio/TV technician for help.

Caution: Any changes or modifications to this device not explicitly approved by manufacturer could void your authority to operate this equipment.

This device complies with part 15 of the FCC Rules. Operation is subject to the following two conditions: (1) This device may not cause harmful interference, and (2) this device must accept any interference received, including interference that may cause undesired operation.

The device has been evaluated to meet general RF exposure requirement This equipment complies with FCC radiation exposure limits set forth for an uncontrolled environment.