

Important Notices

Note! The products are manufactured by batches after performances have been strictly demonstrated and practically tested to verify meeting safety standards. For any use of remote-controlled model, the manufacturer or dealer won't bear any responsibility for accidents resulted from abnormal parts usage and wearing, improper assembling or operation under unsafe environment, please be sure to operate this product under safe environment.

Troubleshooting

Product Problem	The Solution
Excavator cannot start	<ol style="list-style-type: none"> 1. The power switch is off, please turn it on. 2. The battery is not installed correctly, please check the positive and negative poles of the battery to ensure that the battery is installed correctly. 3. The battery is exhausted, please charge the battery or replace with a new battery.
The remote control cannot be used	<ol style="list-style-type: none"> 1. The remote control battery is exhausted, please replace it with a new one. 2. The Excavator is not in the control range of the remote control, please keep it in the control range. 3. There is electromagnetic interference around, please take the toy to a spacious place for use.

Note: The surrounding electromagnetic wave interference may cause the Excavator to malfunction, you can restart the remote control car to operate again.

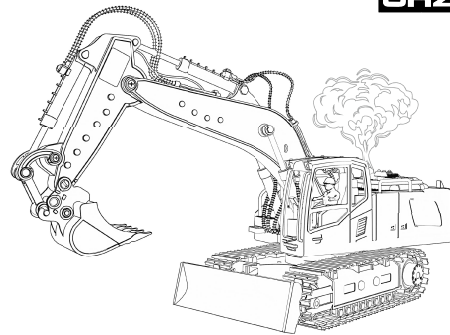


R/C EXCAVATOR

Instruction Manual

6+
AGES

2.4
GHz



17CH
Remote Control

This manual contains important information, please keep it properly.



Battery Precautions

- Toys use battery type: Excavator uses 1X3.7V rechargeable battery; remote control uses 2X1.5V "AA" non-rechargeable batteries (batteries not included);
- Non rechargeable batteries are not to be charged;
- Rechargeable batteries can only be charged under adult supervision;
- Rechargeable batteries are to be removed from the toys before being charged;
- Take out and put in the battery according to the label on the toy battery room;
- Only batteries of the same or equivalent type as recommended are to be used;
- Don't mix old and new batteries;
- Don't mix alkaline, standard (carbon zinc), or rechargeable (nickel cadmium) batteries;
- Exhausted batteries are to be removed from the toy. If it is not used for a long time, please take out the battery in the toy;
- The supply terminals are not to be short-circuited;
- This product can only be charged with the delivered USB charging cable, and it is not allowed to use USB charging cable that are not recommended. USB charging cable is not toys;
- The USB charging cable to be used with the product should be regularly examined for potential hazard, such as damage to the cable or cord, plug, enclosure of other parts and that in the event of such damage, the product must not be used until that damage had been properly removed.

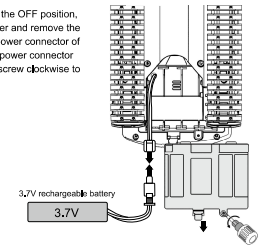
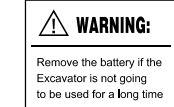
Flight Safety Guidelines

- Keep the small accessories away from kids to avoid accident, not suitable for children under 3 years.
- Don't play in dangerous places such as public roads, select a safe place for operating to avoid dangerous.
- Don't use this product on elevated places such as tables or counters, and avoid falling or heavy falls.
- Don't place this product in direct sunlight or high temperature places to avoid deformation or even damage caused by sun exposure and high temperature.
- Don't play on rainy days or water (mud) pits. Prevent being wetted by water, so as not to cause malfunction, if you accidentally get wet, please use a cloth with good water absorption to absorb the water.

-5-

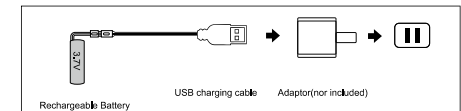
2. Excavator Battery Installation

Making sure that the power switch is in the OFF position, remove the screw from the battery cover and remove the battery compartment cover. Insert the power connector of the 3.7V rechargeable battery into the power connector of the excavator battery compartment, screw clockwise to close the battery compartment.



3. Excavator Battery Charging

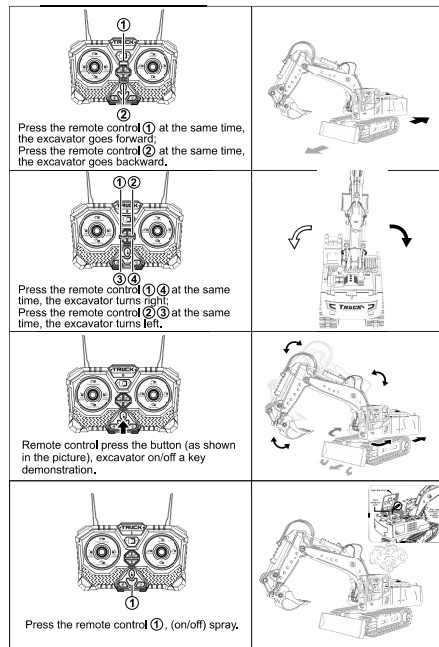
Insert the power connector of the battery into the USB charging cable, and then connect the USB charging cable to the adaptor or the USB port on the computer. When charging is proceeding, the red light keeps solid on, when charging is finished, the red light is off. The charging time is about 3-4 hours.



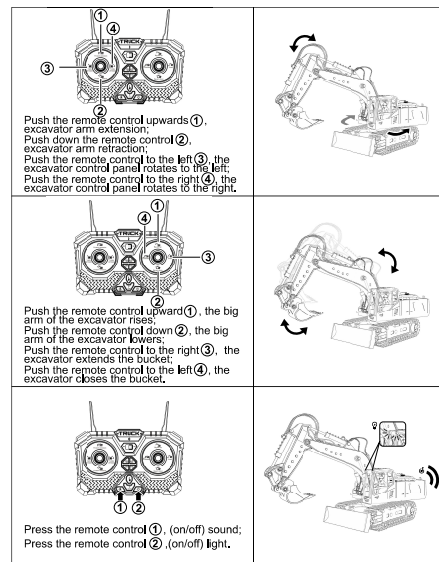
- Please check whether the adapter input voltage is consistent with the current voltage before charging;
- The output voltage of the adapter should be consistent with the battery voltage;
- When charging, it must be done under adult supervision;
- Keep away from flammable materials when charging, and have an adult watch over when charging.

-2-

Operation Demonstration



-3-



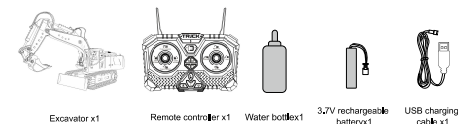
After using the product, please wipe the surface stains with a dry cloth to avoid damage to the components and prolong the service life of the product.

-4-

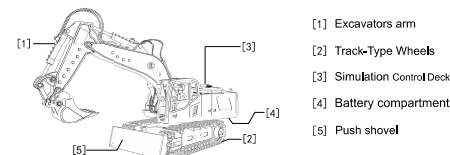
Preface

- Thank you for purchasing our product. Please read this manual carefully before use and retain it for future reference.

Product Configuration



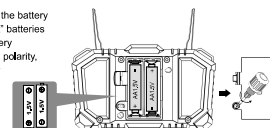
Major Parts Of The EXCAVATOR



Battery Installation And Use

1. Remote Control Battery Installation

Unscrew counter clockwise to open the battery compartment cover, install 2X1.5V "AA" batteries (batteries not included) into the battery compartment according to the given polarity, screw clockwise to close the battery compartment.



-1-

- Be careful not to touch the wheels with fingers, hair, clothes, etc., to avoid injury.
- When the battery of the r/c car or the remote control is low, the speed of the remote control car will slow down significantly. Please replace the battery or charge it in time.
- Please do not violently move the excavator digging arm by hand to avoid damage to the excavator.
- Don't break the remote control antenna to prevent injury.
- Maintenance: wipe the surface stains with a dry cloth.

NOTE

The hydraulic rods and crawlers of this product are easy to damage and fall off. If the parts are damaged or lost, you can purchase the same model parts from the manufacturer or dealer, and replace and install them yourself to ensure the complete structure of the product. Do not use parts of different models or different brands for installation to ensure the structural safety of the product.

-6-

FCC Warning

This device complies with part 15 of the FCC Rules. Operation is subject to the following two conditions: (1) This device may not cause harmful interference, and (2) this device must accept any interference received, including interference that may cause undesired operation.

Any Changes or modifications not expressly approved by the party responsible for compliance could void the user's authority to operate the equipment.

Note: This equipment has been tested and found to comply with the limits for a Class B digital device, pursuant to part 15 of the FCC Rules. These limits are designed to provide reasonable protection against harmful interference in a residential installation. This equipment generates uses and can radiate radio frequency energy and, if not installed and used in accordance with the instructions, may cause harmful interference to radio communications. However, there is no guarantee that interference will not occur in a particular installation. If this equipment does cause harmful interference to radio or television reception, which can be determined by turning the equipment off and on, the user is encouraged to try to correct the interference by one or more of the following measures:

- Reorient or relocate the receiving antenna.
- Increase the separation between the equipment and receiver.
- Connect the equipment into an outlet on a circuit different from that to which the receiver is connected.
- Consult the dealer or an experienced radio/TV technician for help.

The device has been evaluated to meet general RF exposure requirement. The device can be used in portable exposure condition without restriction.