

LORA Antenna

Features

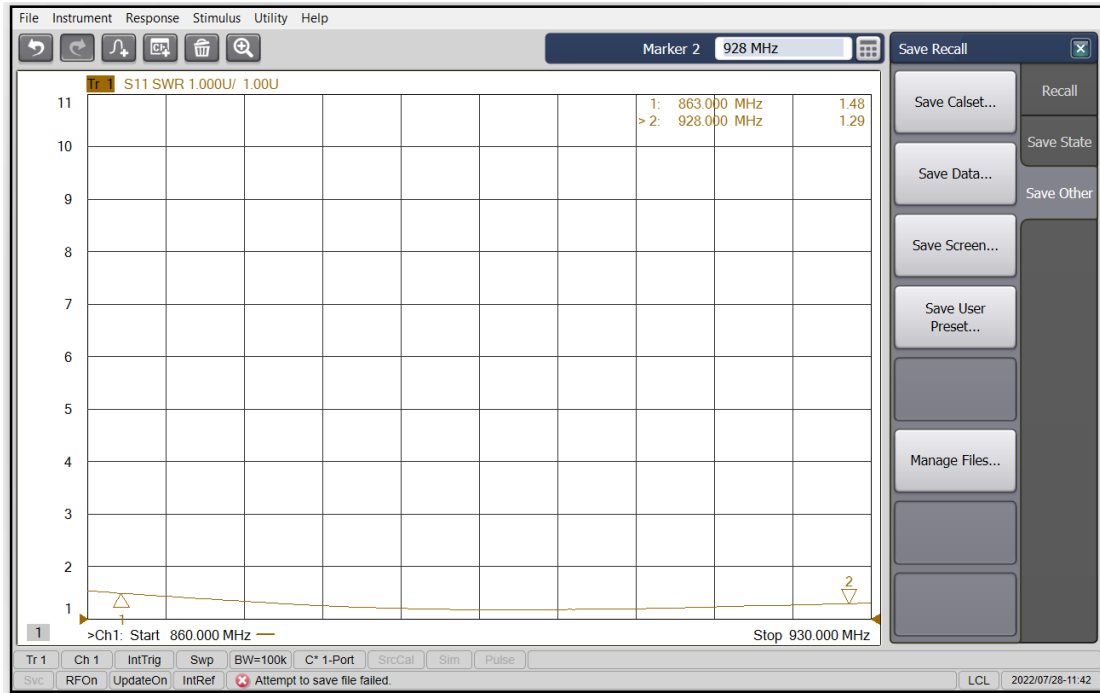
- ✦ Frequency Range: 863~928MHz
- ✦ Quite good VSWR
- ✦ Max Gain: 2.5dBi
- ✦ High efficiency
- ✦ Loop antenna
- ✦ Antenna Produced by RAK

Specifications

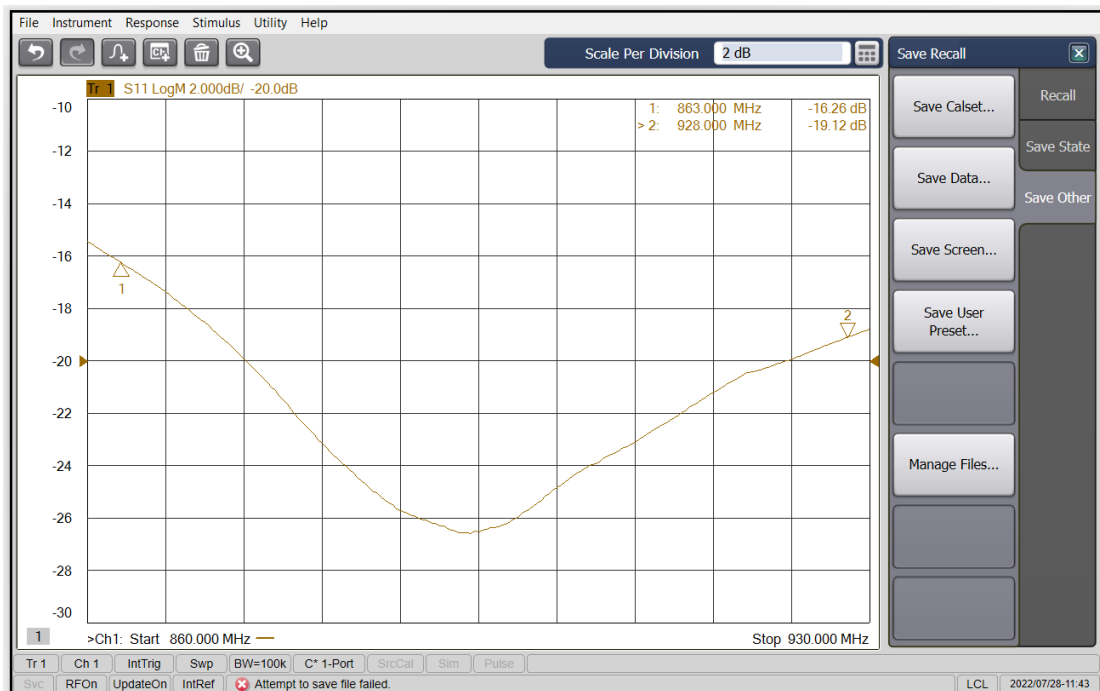
Electrical Specifications	Frequency Range	863MHz~928MHz
	Peak Gain	2.5 dBi
	VSWR	≤ 1.5
	Efficiency	>85%
	Feed Impedance	50 Ohms
	Polarization	Vertical
	Antenna type	print on board

Mechanical specifications	Dimensions (mm)	51mm x 16mm
	Operation Temp (°C)	-30°C ~ +75°C
	Humidity range	5%~95%

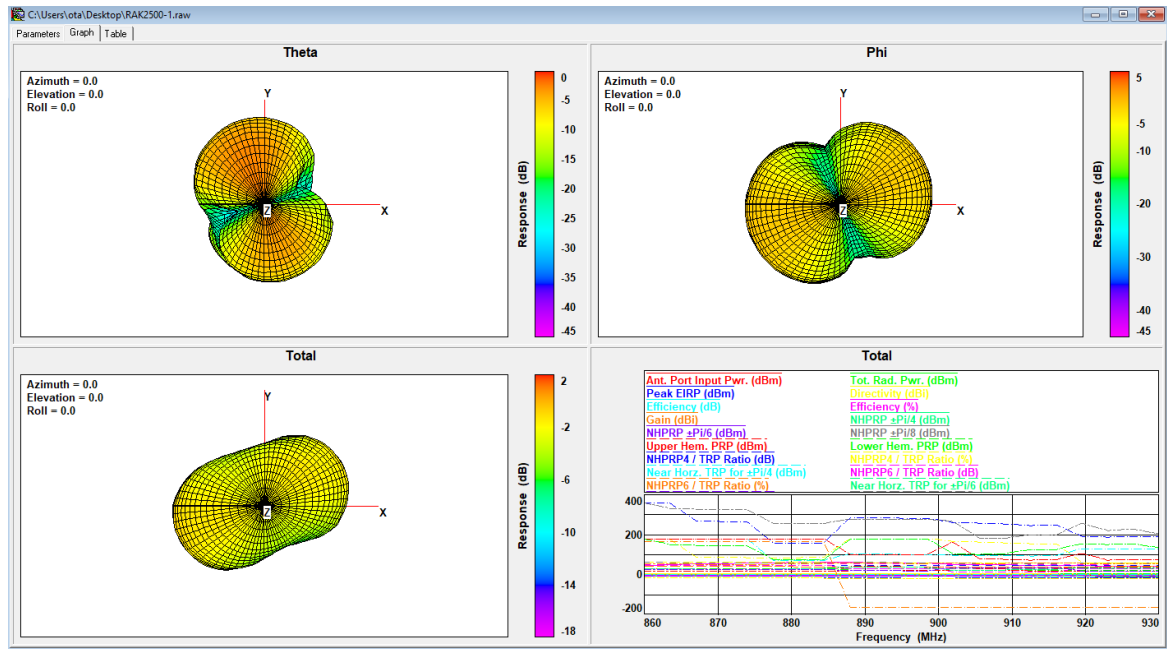
VSWR



S11



Radiation Patterns



LTE Antenna

Features

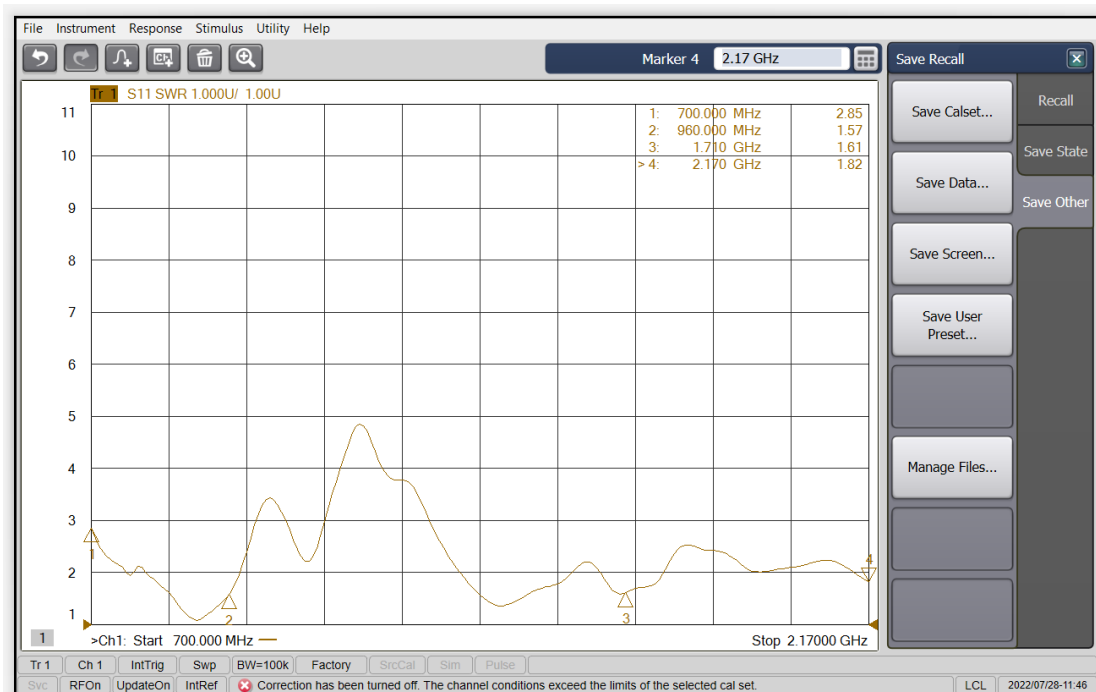
- ✦ Frequency Range: 700~960MHz , 1710~21700MHz
- ✦ Quite good VSWR
- ✦ Max Gain: 3dBi
- ✦ High efficiency
- ✦ Loop antenna
- ✦ Antenna Produced by RAK

Specifications

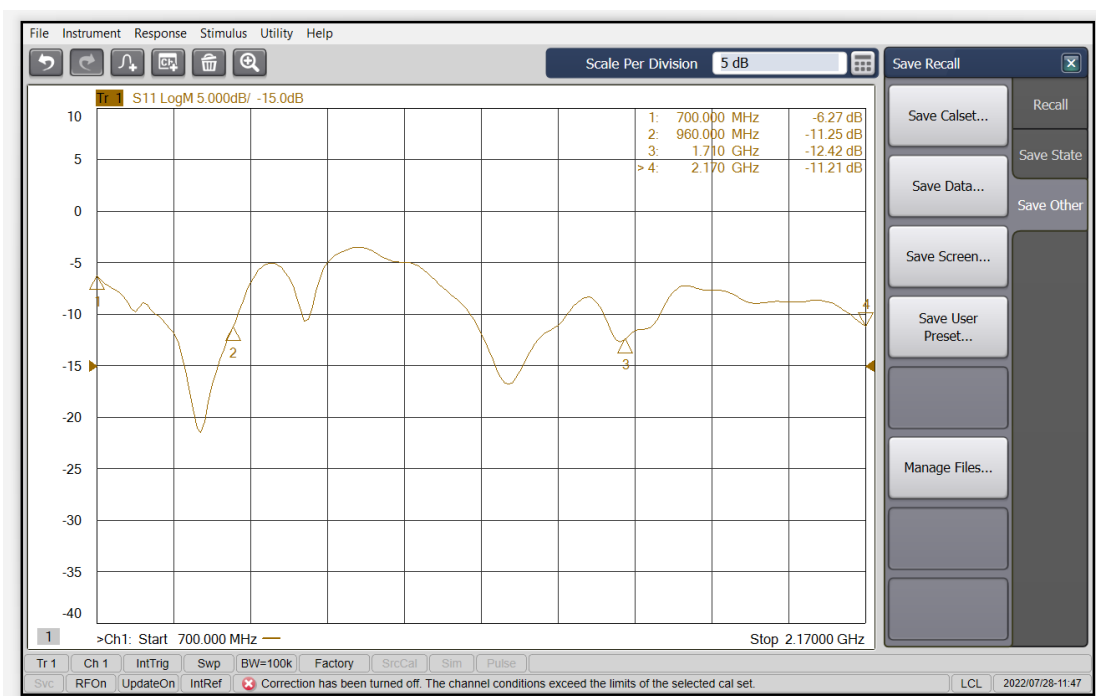
Electrical Specifications	Frequency Range	700MHz~960MHz 1710~21700MHz
	Peak Gain	3dBi
	VSWR	≤ 3
	Efficiency	>60%
	Feed Impedance	50 Ohms
	Polarization	Vertical
	Antenna type	print on board

Mechanical specifications	Dimensions (mm)	51mm x 16mm
	Operation Temp (°C)	-30°C ~ +75°C
	Humidity range	5%~95%

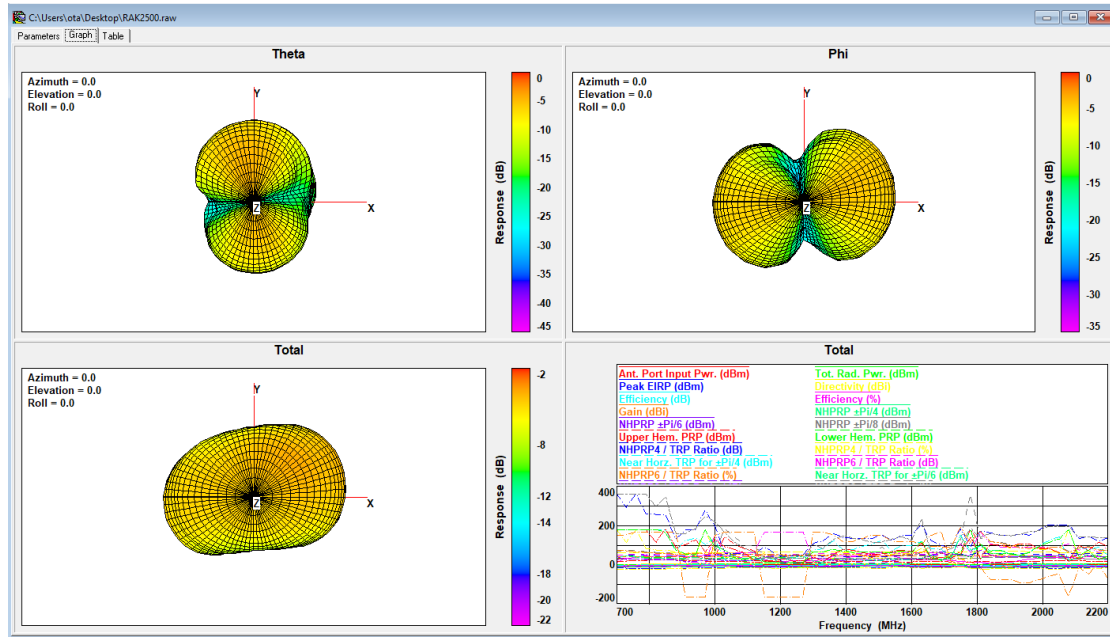
VSWR



S11



Radiation Patterns



WIFI Antenna

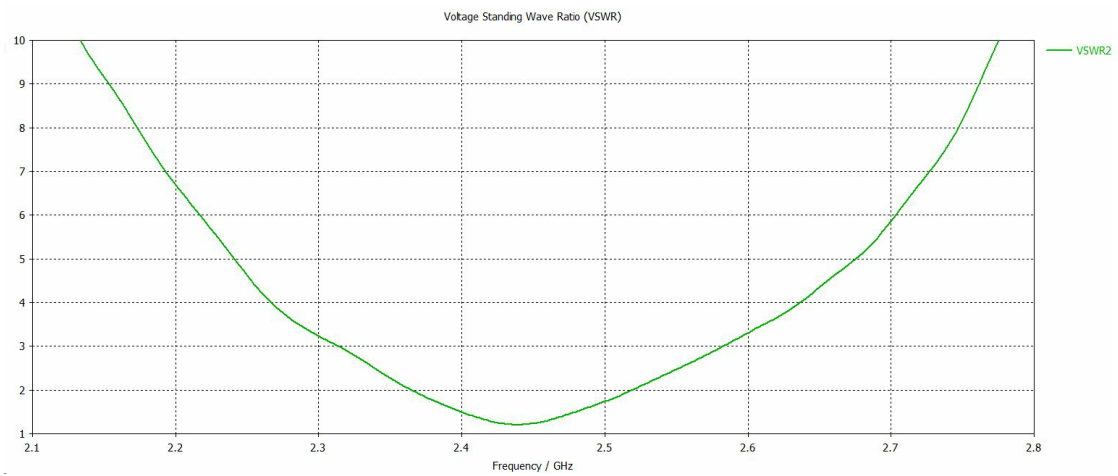
Features

- ✦ Frequency Range: 2400~2500MHz
- ✦ Quite good VSWR
- ✦ Max Gain: 2dBi
- ✦ High efficiency

Specifications

Electrical Specifications	Frequency Range	2400MHz~2500MHz
	Peak Gain	2 dBi
	VSWR	≤ 2.5
	Efficiency	>75%
	Feed Impedance	50 Ohms
	Polarization	Vertical
	Antenna type	print on board
Mechanical specifications	Dimensions (mm)	15mm x 3mm
	Operation Temp (°C)	-30°C ~ +75°C
	Humidity range	5%~95%

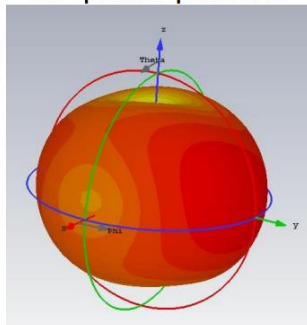
VSWR



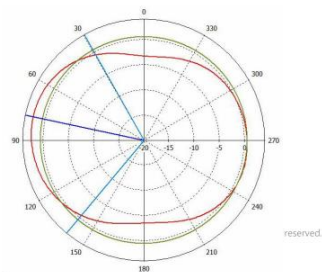
Radiation Patterns



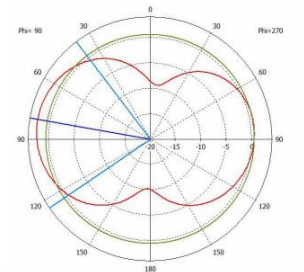
3D plane pattern



XY plane pattern



YZ plane pattern



Antenna position

