



SPECIFICATION

APPLICATION FOR APPROVAL

客户名称 CUSTOMER : 深圳市美高电子设备有限公司
客户案号 CS P/N : V3
零件名称 PART NAME : M05.08.V3000001
耀登案号 DEVE NO. : AUK02532B-WIFI2
零件料号 PART NAME : A73284-30
承认日期 DATE : Aug.2, 2024

客户确认:			
射频工程师	结构工程师	研发经理	产品经理
耀登电通科技(昆山)有限公司			
电气工程师	结构工程师	项目	核准
吕杰	孙涛	陈红雪	毛建军

总部

耀登電通科技(昆山)有限公司
江苏省昆山市周市镇迎宾路 15 号
TEL: 0512-57646998
FAX: 0512-57646168

Head Quarter

Auden Techno(KUNSHAN)CO.LTD
NO.15 YING-BIN ROAD, LUYANGTOWN, KUNSHAN, JIANGSU
CHINA

分公司:

耀登電通科技(昆山)有限公司西安分公司
西安市 高新区 唐延南路 10 号 中兴产业园 E1-04
TEL: 13382157879

Branch

Auden Techno(KUNSHAN)CO.LTD. Xi 'an branch
E1-04, zhongxing industrial park, no.10 tangyan south road,
high-tech zone, xi 'an

耀登電通科技(昆山)有限公司深圳分公司
地址: 深圳市南山区桃源街道红花岭工业区第五区 A 栋二楼
201-202 (南区)
TEL: 185 8845 5257

Auden Techno(KUNSHAN)CO.LTD. Shenzhen branch
Address: 201-202, 2nd floor, building A, zone 5, honghualing
industrial zone, taoyuan street, nanshan district, shenzhen
(southern district)

CONFIDENTIAL

This message contains information that may be confidential and privileged. Unless you are the addressee (or authorized to receive messages for the addressee), you can not use, copy or disclose to any third party or any information contained in the message. If you have received the message in error, please advise the sender by reply e-mail and delete the message. Nothing in this message should be interpreted as a digital or electronic signature that can be used to authenticate a contract or other legal document. Thank you very much.

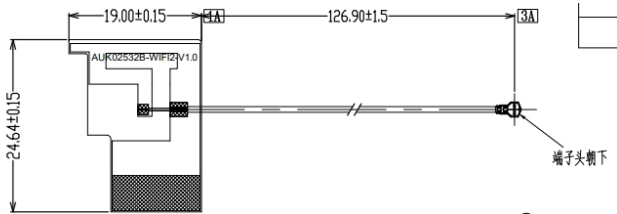
INDEX

- 一、 规格书封面 (Cover)
- 二、 规格书目录 (Index)
- 三、 天线基本参数 (The Basic Parameters)
- 四、 电气测试报告 (RF Performance Test Report)
- 五、 工程图纸 (Product Drawing)
- 六、 尺寸报告 (Dimensional check reports)
- 七、 可靠性测试报告 (Reliability test report)

CONFIDENTIAL

This message contains information that may be confidential and privileged. Unless you are the addressee (or authorized to receive messages for the addressee), you can not use, copy or disclose to any third party or any information contained in the message. If you have received the message in error, please advise the sender by reply e-mail and delete the message. Nothing in this message should be interpreted as a digital or electronic signature that can be used to authenticate a contract or other legal document. Thank you very much.

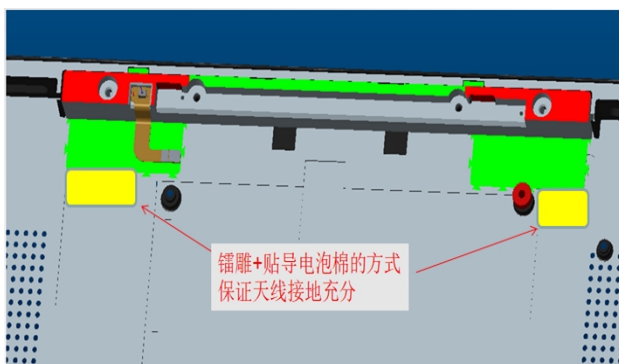
天线基本参数 (The Basic Parameters)

项目 (Item)	特性 (Specifications)
天线结构组成	FPC+CABLE
频率 (Frequency)	2.4g~WIFI6E
驻波比 (V. S. W. R)	≤ 3
增益 (Gain)	≤ 3
极化方式 (Polarization)	线极化
特性阻抗 (Impedance)	50 Ω
塑胶材质 (Plastic material)	无
接头形式 (joint type)	4 代端子+Cable
工作温度 (Operation temperature)	-40°C to 85°C
储存温度 (Storage temperature)	-40°C to 85°C
湿度 (humidity)	Non-condensing 65°C 95% RH
天线图片	 <p>The technical drawing illustrates the antenna assembly with the following dimensions and labels:</p> <ul style="list-style-type: none">Top horizontal dimension: 19.00±0.15Right horizontal dimension: 126.90±1.5Left vertical dimension: 24.64±0.15Component label: AU102532B-WIFI2V1.0Reference point: 端子头朝下 (Terminal head facing down)

CONFIDENTIAL

This message contains information that may be confidential and privileged. Unless you are the addressee (or authorized to receive messages for the addressee), you can not use, copy or disclose to any third party or any information contained in the message. If you have received the message in error, please advise the sender by reply e-mail and delete the message. Nothing in this message should be interpreted as a digital or electronic signature that can be used to authenticate a contract or other legal document. Thank you very much.

天线组装位置（图片仅供参考组装）



电气测试报告（RF Performance Test Report）

WIFI2-V.S.W.R

**CONFIDENTIAL**

This message contains information that may be confidential and privileged. Unless you are the addressee (or authorized to receive messages for the addressee), you can not use, copy or disclose to any third party or any information contained in the message. If you have received the message in error, please advise the sender by reply e-mail and delete the message. Nothing in this message should be interpreted as a digital or electronic signature that can be used to authenticate a contract or other legal document. Thank you very much.

WIFI2-无源测试数据

freq (MHz)	Effi (%)	Gain	freq (MHz)	Effi (%)	Gain	freq (MHz)	Effi (%)	Gain
2400	31.47	0.35	5150	32.36	-0.09	5900	39.69	1.99
2410	31.06	0.33	5200	30.59	-1.12	6000	38.01	2.03
2420	31.16	0.49	5250	30.36	-1.02	6100	37.51	2.11
2430	32.14	0.97	5300	29.92	-0.89	6200	35.95	2.14
2440	33.35	1.42	5350	31.02	-0.53	6300	36.25	2.15
2450	34.48	1.74	5400	31.38	-0.33	6400	36.87	2.23
2460	35.30	1.83	5450	36.43	-0.04	6500	37.21	2.24
2470	35.53	1.84	5500	38.17	1.14	6600	36.95	2.15
2480	35.53	1.74	5550	37.20	1.00	6700	37.15	2.14
2490	35.17	1.54	5600	37.74	1.18	6800	36.25	1.99
2500	34.54	1.38	5650	36.46	0.89	6900	35.47	1.86
			5700	38.76	0.99	7000	34.84	1.77
			5750	39.39	1.05	7100	33.46	1.58
			5800	41.81	1.66	7200	32.29	1.46
			5850	42.97	1.90			

WIFI2-有源测试数据

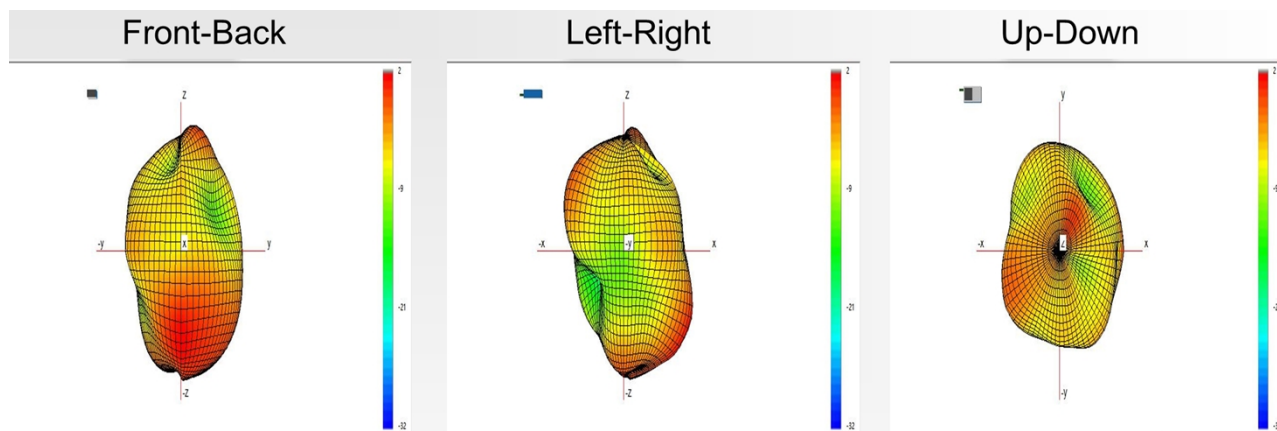
	channel	TRP	TIS
802.11a	36	12.48	-60.49
	100	12.59	-60.35
	157	13.68	-61.28
802.11b	1	10.46	-62.39
	7	10.18	-61.85
	11	10.32	-61.67

CONFIDENTIAL

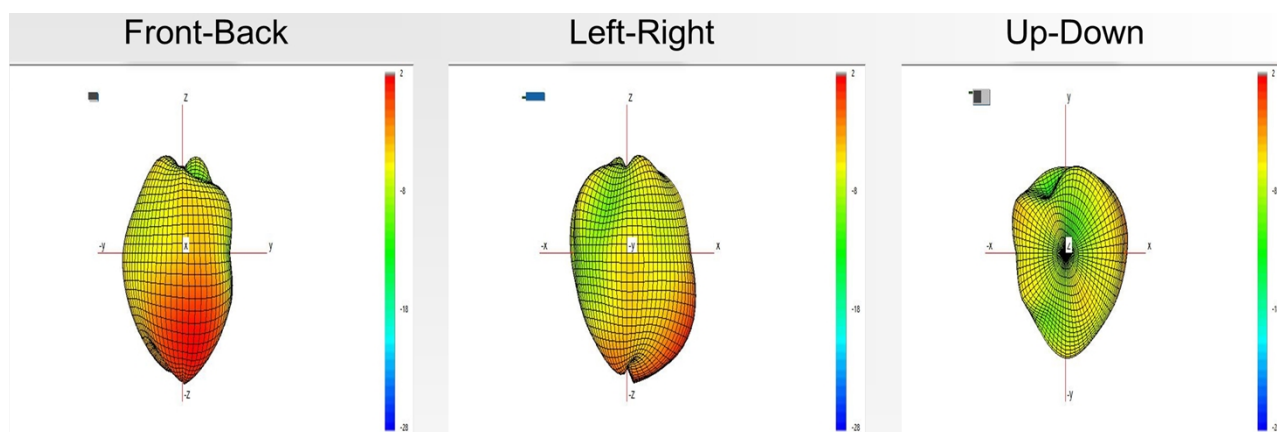
This message contains information that may be confidential and privileged. Unless you are the addressee (or authorized to receive messages for the addressee), you can not use, copy or disclose to any third party or any information contained in the message. If you have received the message in error, please advise the sender by reply e-mail and delete the message. Nothing in this message should be interpreted as a digital or electronic signature that can be used to authenticate a contract or other legal document. Thank you very much.

WIFI2-天线辐射 3D 图

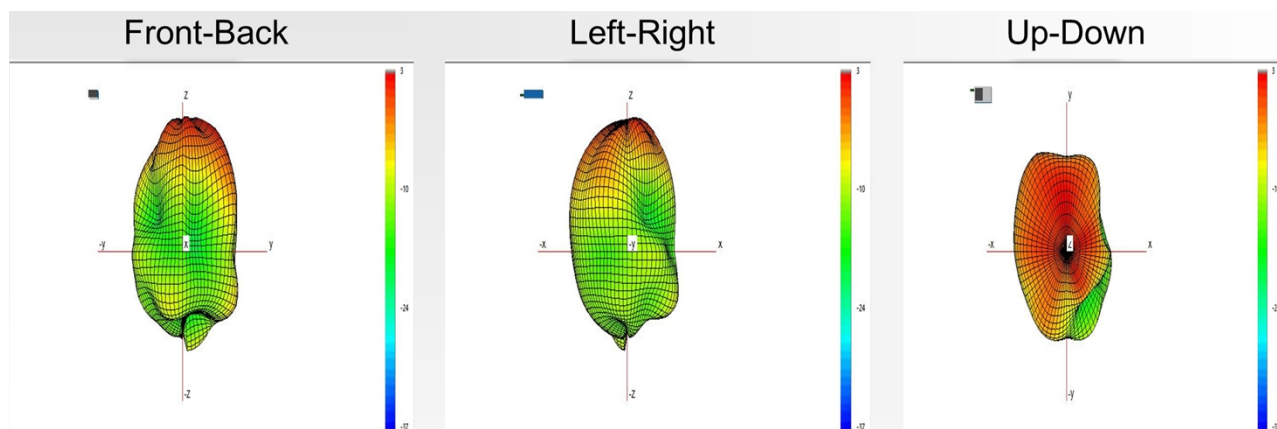
2450M:



5500M:



6525M:

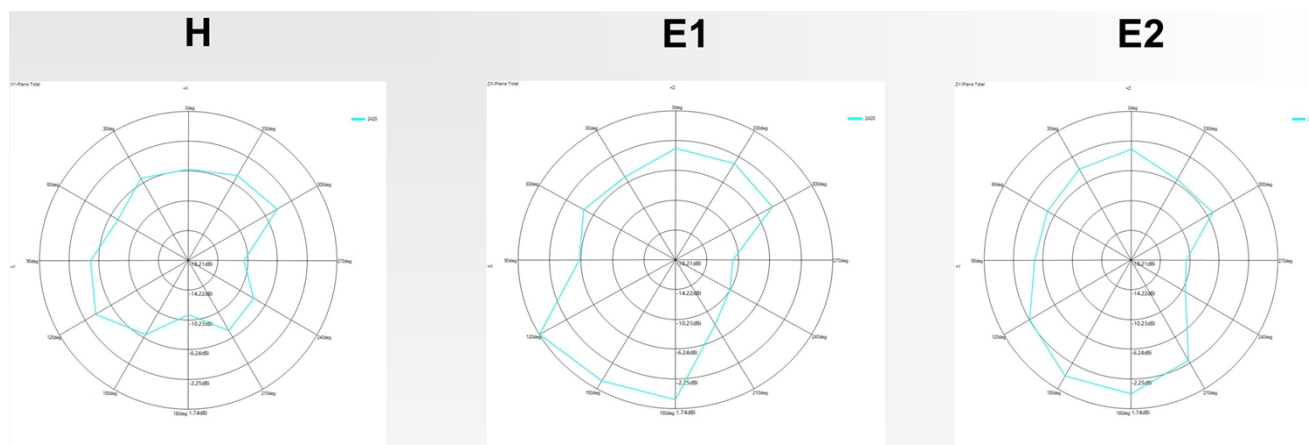


CONFIDENTIAL

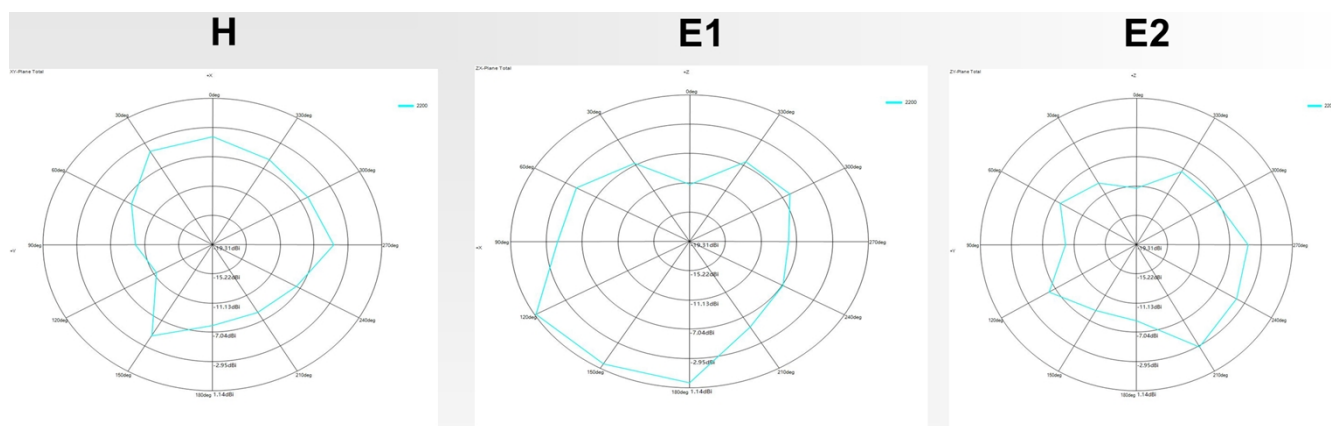
This message contains information that may be confidential and privileged. Unless you are the addressee (or authorized to receive messages for the addressee), you can not use, copy or disclose to any third party or any information contained in the message. If you have received the message in error, please advise the sender by reply e-mail and delete the message. Nothing in this message should be interpreted as a digital or electronic signature that can be used to authenticate a contract or other legal document. Thank you very much.

WIFI2-天线辐射 2D 图

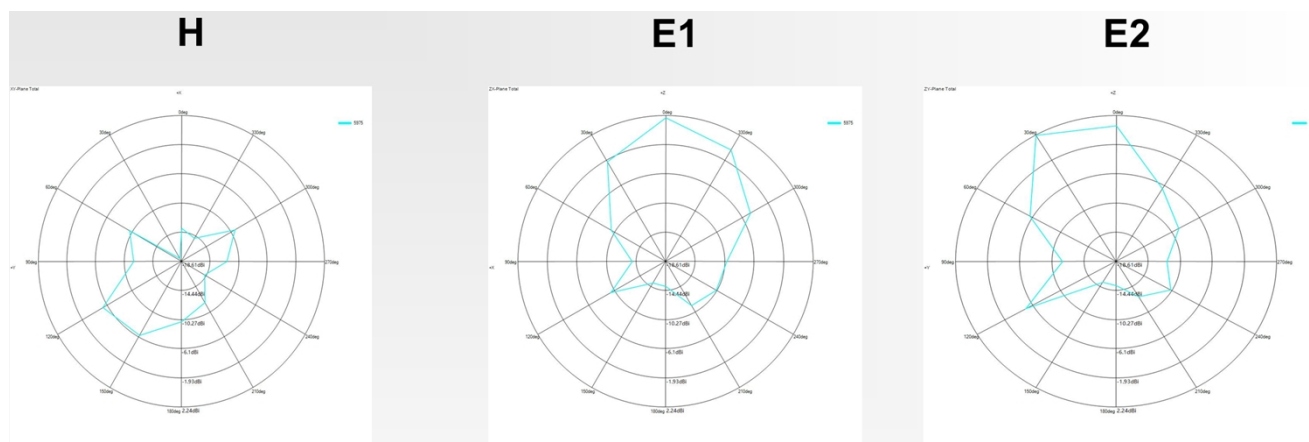
2450M:



5500M:



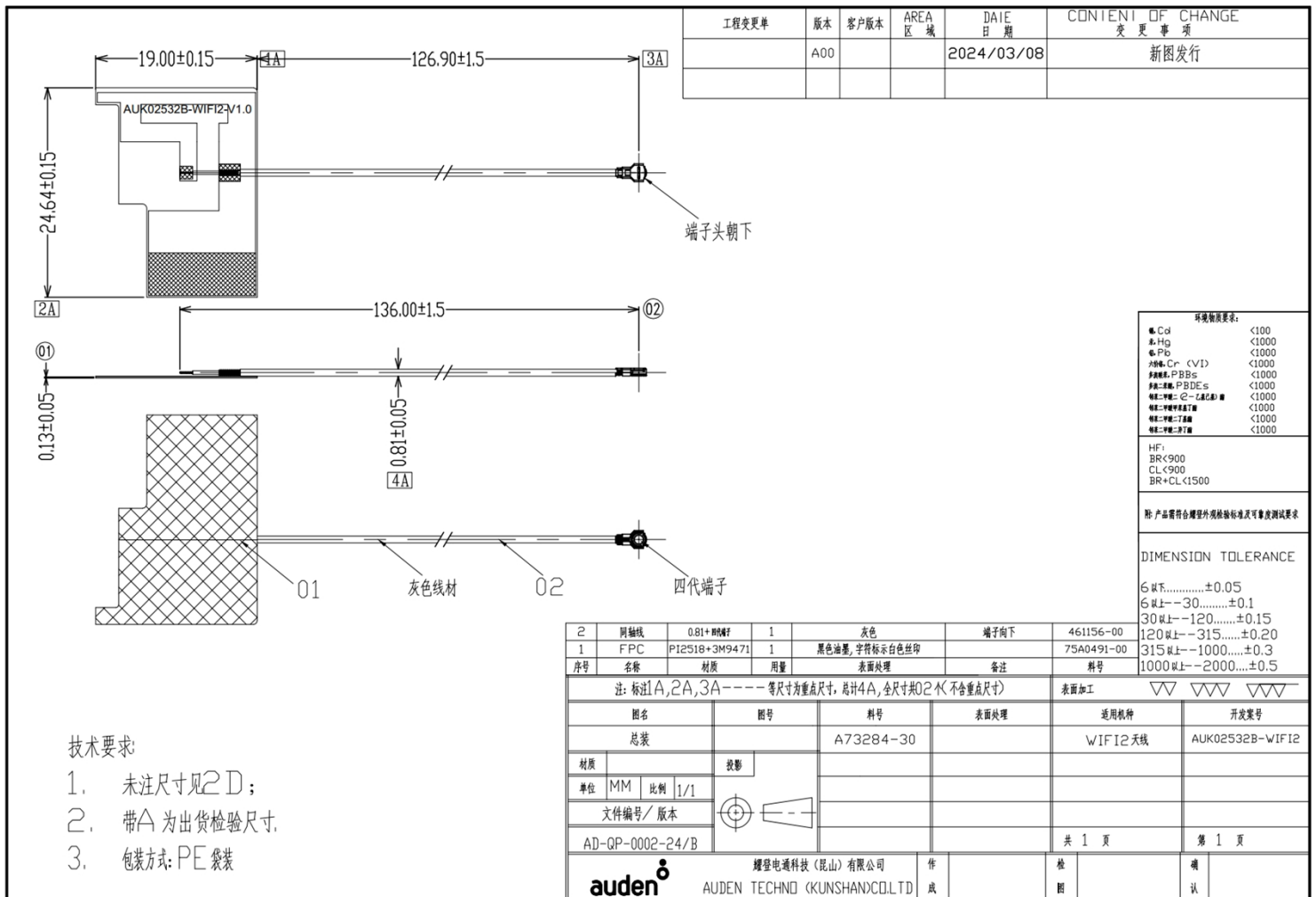
6525M:



CONFIDENTIAL

This message contains information that may be confidential and privileged. Unless you are the addressee (or authorized to receive messages for the addressee), you can not use, copy or disclose to any third party or any information contained in the message. If you have received the message in error, please advise the sender by reply e-mail and delete the message. Nothing in this message should be interpreted as a digital or electronic signature that can be used to authenticate a contract or other legal document. Thank you very much.

工程图纸 (Product Drawing)



CONFIDENTIAL

This message contains information that may be confidential and privileged. Unless you are the addressee (or authorized to receive messages for the addressee), you can not use, copy or disclose to any third party or any information contained in the message. If you have received the message in error, please advise the sender by reply e-mail and delete the message. Nothing in this message should be interpreted as a digital or electronic signature that can be used to authenticate a contract or other legal document. Thank you very much.