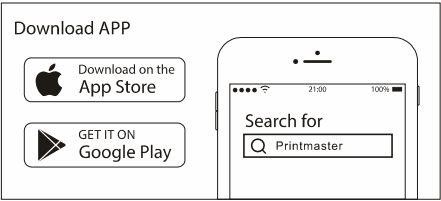
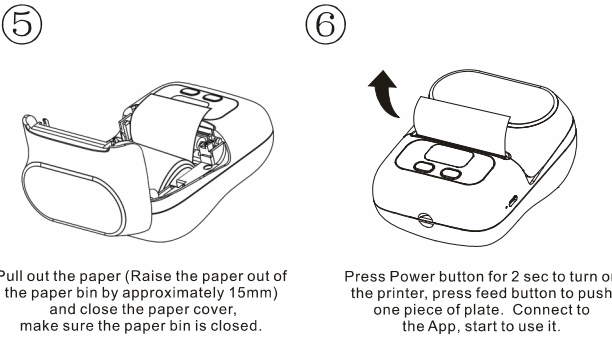
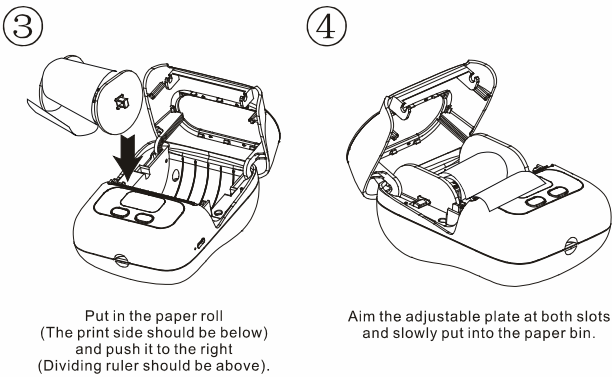
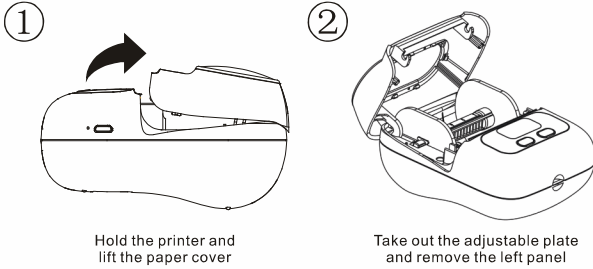


05. Search Printmaster on App Store or Google Play to Get the App



06. Installing the Paper Roll



07. Product Warranty Description

Thank you for choosing Printmaster.

- ① The free warranty period is 1 year from the date of purchase.
- ② Within 30 days from the date of user's receipt, the user can choose to return.

08. FCC STATEMENT

This device complies with Part 15 of the FCC Rules. Operation is subject to the following two conditions:

- ① This device may not cause harmful interference, and
- ② This device must accept any interference received, including interference that may cause undesired operation.

Warning: Changes or modifications not expressly approved by the party responsible for compliance could void the user's authority to operate the equipment.
NOTE: This equipment has been tested and found to comply with the limits for a Class B digital device, pursuant to Part 15 of the FCC Rules. These limits are designed to provide reasonable protection against harmful interference in a residential installation. This equipment generates uses and can radiate radio frequency energy and, if not installed and used in accordance with the instructions, may cause harmful interference to radio communications. However, there is no guarantee that interference will not occur in a particular installation. If this equipment does cause harmful interference to radio or television reception, which can be determined by turning the equipment off and on, the user is encouraged to try to correct the interference by one or more of the following measures:
Reorient or relocate the receiving antenna.
Increase the separation between the equipment and receiver.
Connect the equipment into an outlet on a circuit different from that to which the receiver is connected.
Consult the dealer or an experienced radio/TV technician for help.

FCC Radiation Exposure Statement:
This equipment complies with FCC radiation exposure limits set forth for an uncontrolled environment. This equipment should be installed and operated with minimum distance 20cm between the radiator & your body.

09. Non-warranty Regulations

The warranty is void under the following conditions:

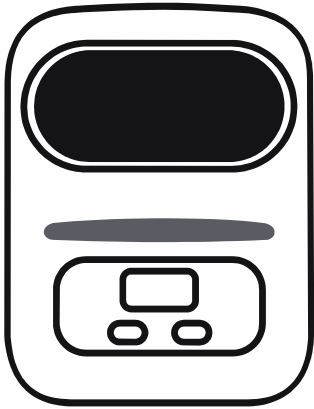
- ① Exceeding the warranty period.
- ② Not presenting the original warranty/maintenance card .
- ③ Presenting a damaged warranty/maintenance card (e.g.tearing or tampering), altering product information.
- ④ Damage caused by unauthorized repair, disassembling,etc.
- ⑤ Damage caused by human error.
- ⑥ Damage caused by natural disasters such as earthquakes, floods, windstorms, lightning strikes, or external disasters such as fires and house collapses.
- ⑦ Failure or damage caused by harsh conditions (oil, dust, moisture, direct sunlight etc.) or failure to use or care for as outlined by the instruction manual.

10. Warranty/Maintenance Card

☐ Replace ☐ Return ☐ Repair

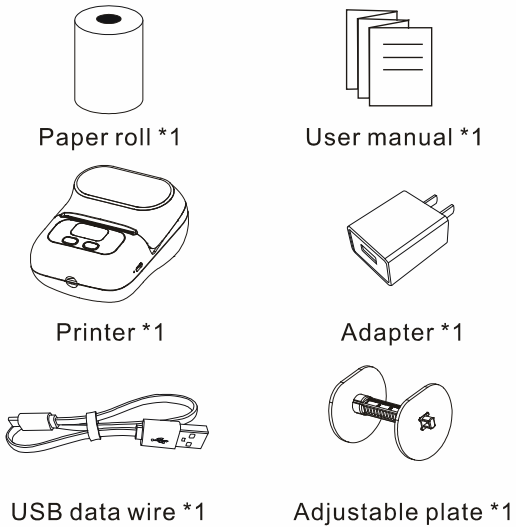
| | | | |
|--|------------------------|---------|---------------------|
| User Information | Name: | Gender: | Phone: |
| | Address: | | |
| Product Information | Date of purchase: | | |
| | Product order number: | | |
| | Product serial number: | | |
| Reason for Return: (Replace/ Repair/ Request Maintenance) | Fault description: | | |
| Maintenance Records: | Fault conditions: | | Maintenance staff: |
| | Processing situation: | | Repair date: |
| | Repair ticket number: | | Date of inspection: |

User Manual



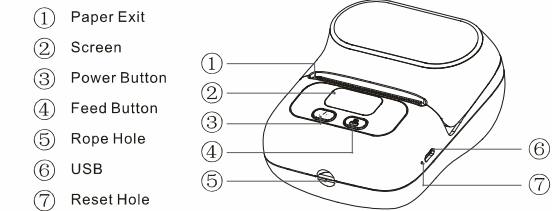
Please read this manual carefully before using this product and store it properly.

01. Inside Box



If anything is missing, please contact the supplier.

02. Product Description



Turn On/Off (1) Press Power Button for 2 seconds to turn on the printer.

(2) To turn it off, please press the Power Button for 2 seconds.

Feed: (1) Label paper: Press Feed Button to feed the tape to the proper place and get ready for printing next tape.

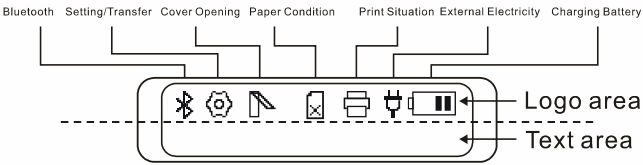
(2) Continuous paper: Press Feed Button to keep paper feeding, it will stop when you let go of the button.

System Setting: (1) Press Power Button for 1 second to switch to the setting interface.

(2) Press Feed Button for 1 second, scroll option list and select by pressing Power Button.

(3) Press Power Button for 2 seconds to go back to the main page.

03. Screen Information



Logo guidance

Bluetooth

When printer connects to Bluetooth, this logo will be light up. This logo will flash when the data is transferring.

Setting/Transfer

When you are using USB wire, this logo will be shown as ; If you press Power Button for a short time, it will be switched to Setting Mode, the logo will be shown as Setting Mode .

Cover Opening

It indicates that the paper cover is opened or not closed correctly. A message will appear, stating that the paper cover is opened.

Paper Condition

If the paper roll is not installed correctly, or there is insufficient paper, this logo will light up. A message will appear, stating that there is no paper. When the paper is detected, it will give you a confirmation so that you are able to proceed.

Print Condition

It will light up while the printer is printing or feeding.

External Electricity

It will light up when the printer is connected to a power source.

Charging Battery

Please charge your printer when the power display begins to flash.

Text Area

This area shows related text information.

Screen setting

| Options | Parameter |
|---------------------|---|
| Language | English, Chinese |
| Print concentration | 1(Lightest), 2, 3, 4(Light), 5, 6(Normal), 7, 8, 9, 10(Thick), 11, 12, 13, 14, 15(Thickest) |
| Print speed | 1(Slowest), 2(Slow), 3(Normal), 4(Fast), 5(Fastest) |
| Paper type | Interstitial paper, Continuous paper |
| Automatic shutdown | 5min, 15min, 30min, 1h, 2h, 4h, 8h, 24h, No shutdown |
| Restore settings | Press power button to restore |
| Firmware version | Display Firmware version |
| Device address | Display device address |

Screen hint

| Content | Condition |
|----------------------------|---|
| Shutdown... | Battery lower than 1% |
| Printing... | Printing regularly |
| Feeding... | Press Feed button |
| Overheated, please wait... | Print head is overheated |
| No paper detected... | No paper in the bin or paper is installed incorrectly |
| Cover opened... | The paper cover is opened |

04. Device Parameters

| | | |
|-----------------------|------------------------|---|
| Hardware | Name: | Smart label printer |
| | Model: | M110 |
| | Print technology: | Direct thermal |
| | Maximum print width: | 20-50mm |
| | Types of tape: | Thermosensitive label, thermosensitive continuous paper |
| | Label size: | 57mm Xφ50mm (Max width X Max diameter) |
| | Print speed: | 20-45mm/s (switchable, level 1-5) |
| | Print concentration: | switchable, level 1-15 |
| | Print resolution: | 203 dpi |
| | Life of print head: | 50KM |
| Operating Information | Connection type: | Bluetooth 4.0 |
| | | Micro USB |
| | Battery: | 1500mAh |
| | Printer size: | 4.5 X 3.4 X 2.5in. |
| | Input: | 5V = 2A |
| | Power supply mode: | Micro USB |
| | | Lithium battery |
| | Operating system: | Windows 7/8/10 |
| | | Android |
| | | iOS |
| Operating Information | Instruction set: | ESC/POS |
| | Bar code: | 1D bar code & 2D bar code |
| | Operating temperature: | 0°C - 50°C |
| | Storage temperature: | -20°C-60°C |
| | Operating humidity: | 20% - 85% |
| | Storage humidity: | 5% - 95%(Non condensation) |