

Functional Parameter

Loudspeaker - - - - - (Φ) 40mm
Loudspeaker Output - - - 5W THD=10%
Signal-to-Noise - - - - - ≥90dB
Responding Frequency - - 90Hz~20KHz
Power supply - - - - - DC5V±1000mA
Playing time - - - - - 10~15 hours

Features

- 1.Easy operation,elegant design.
- 2.Small size,great sound quality indoors and outdoors with a long battery life.
- 3.It connects wirelessly to your smartphone,tablet or other Bluetooth device,so you can listen to your music,videos or games anytime,anywhere.And it lets you play while it charges.
- 4.And the built-in speakerphone lets you take calls out loud,too.
- 5.Auxiliary port lets you connect other audio sources,like an MP3 player etc..

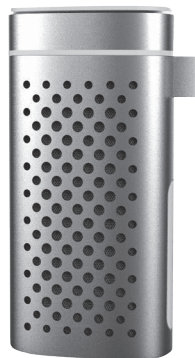


Made in China 300636 **Distributed By:** Collective Goods
282 Century Pl, Ste 2000 - Louisville, CO 80027 collectivegoods.com

FCC ID: 2AAL7-FM0111

Declaration ID: D023964

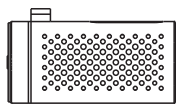
Manufacturer Name: FORM Electroincs Co., Ltd.



User Manual

Wireless Speaker
With Power Bank

Packing List



1 Speaker

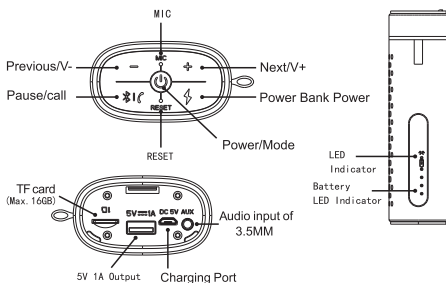


2 USB Cable



3 Manual

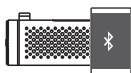
The Description Of The Product



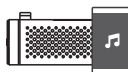
Operation

1. Speaker On/Off

- Pressing for 2 seconds-power on, will be under bluetooth pairing mode automatically.
- Pressing shortly, Mode Switch: Bluetooth /TF Card Reading/Aux-in



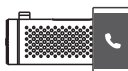
Indicator: Bluetooth Pairing Mode-Slow Flash Light
Still Indicator: bluetooth paired successfully
Music Playing: Slow Flash Light



2. Music Player

- Pressing shortly-Pause, pressing again- Continue to play.

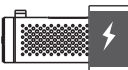
- Pressing "-" shortly-Previous, Long Pressing "-" -Volume Down.
- Pressing "+" shortly-Next, Long Pressing "+" -Volume Up.



3. Speakerphone

- Pressing shortly to take call when there have an incoming call, pressing it again to hang up.

- No incoming call, pressing twice shortly, will dial the last phone number automatically.



4. Power Bank Mode

- Pressing shortly, power bank function ON. Power Bank Function OFF after 5 seconds if there have no device connected.

-Switch to Power Bank Mode, the battery indicators show the battery capacity. Power Bank Mode Off, no any indicators. When Speaker Under Charging Mode, all the 4 indicators ON be fully charged.

FCC Warning Statement

Changes or modifications not expressly approved by the party responsible for compliance could void the user's authority to operate the equipment.

This equipment has been tested and found to comply with the limits for a Class B digital device, pursuant to Part 15 of the FCC Rules. These limits are designed to provide reasonable protection against harmful interference in a residential installation. This equipment generates uses and can radiate radio frequency energy and, if not installed and used in accordance with the instructions, may cause harmful interference to radio communications. However, there is no guarantee that interference will not occur in a particular installation. If this equipment does cause harmful interference to radio or television reception, which can be determined by turning the equipment off and on, the user is encouraged to try to correct the interference by one or more of the following measures: --Reorient or relocate the receiving antenna.

--Increase the separation between the equipment and receiver.

--Connect the equipment into an outlet on a circuit different from that to which the receiver is connected.

--Consult the dealer or an experienced radio/TV technician for help.