

## 1. Antenna Description:

|                 |                                    |
|-----------------|------------------------------------|
| Antenna type    | PCB antenna                        |
| Model           | INSR14                             |
| Frequency range | 2400-2500MHz                       |
| Manufacturer    | Ningbo Haishu Wade Crafts Co., Ltd |
| ANT Peak Gain   | 1.63 dBi                           |

## 2. Antenna Photo:

Length :13.15mm  
Width:3.76mm



### 3. Test Equipment & Conditions

#### 3.1 Test instrument

VSWR is tested using Agilent E5071B connected to a hand mechanism, and the status is free space.

#### 3.2 Test environment and methods

Dark room specifications: ETS-743

TD-SCDMA test equipment: StarPoint SP6010/Agilent 8960

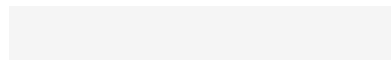
LTE-TDD/FDD-SCDMA test equipment: StarPoint SP8011/CMW500

WCDMA/GSM/CDMA test equipment: Agilent 8960

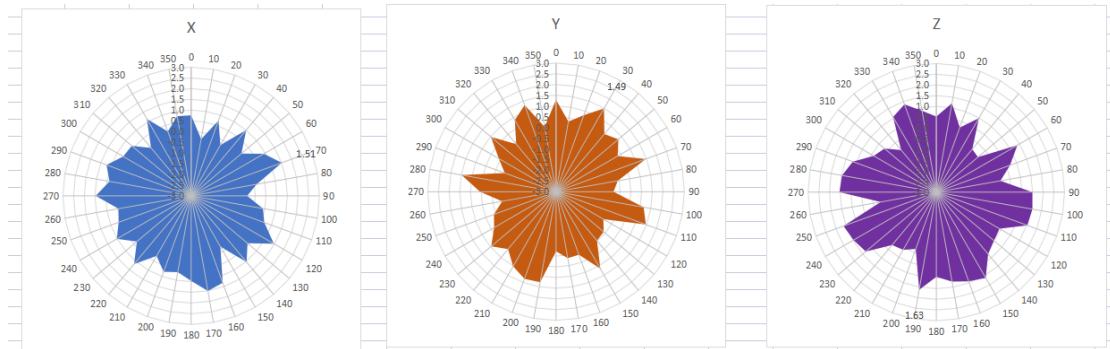
Passive efficiency testing equipment: Agilent Technologies E5071B



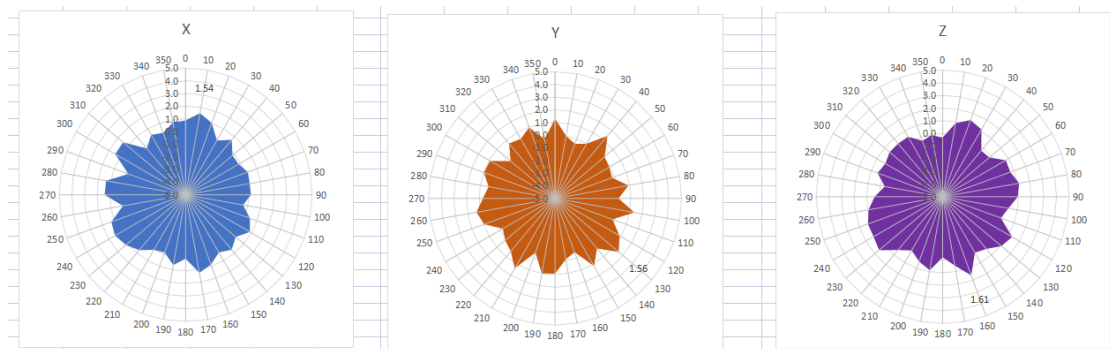
### 4 . Antenna Radiation Pattern



## 2400MHz



## 2450MHz



## 2500MHz

