

# Socket CF RFID Reader-Scan Card Series 6



## Dual-Function RFID & Bar Code Scanning Capabilities for Pocket PC Applications

As RFID begins to supplement barcodes in many applications, both technologies will co-exist for many years. Now you can add both high frequency RFID read/write and laser barcode scanning capabilities to your Pocket PC-based data collection application with Socket's CompactFlash RFID Reader-Scan Card. This dual-function product reads and writes to all ISO 15693 and many proprietary 13.56 MHz RFID tags and also scans all common linear barcodes.



Like all of Socket's Auto ID products, the CF RFID Reader-Scan Card is supported by SocketScan™ keyboard wedge software, which sends the RFID tag ID or bar coded data to any Windows application as virtual keystrokes — no custom programming needed! A small additional application allows reading and manual writing to the accessible memory blocks for demonstration purposes.

For developers who wish to embed control of the CF RFID Reader-Scan Card's functionality into their applications, an SDK is available. For more information, please visit: [www.socketcom.com/pdf/rfid/rfidsdk.pdf](http://www.socketcom.com/pdf/rfid/rfidsdk.pdf)

### Mobility Friendly™ Means Low Power

As with all of our products, Socket designed the Mobility Friendly CF RFID Reader-Scan Card to use minimal power. Drawing only 11 mA (36 mW) in idle mode, the CF RFID Reader-Scan Card will operate for hours without requiring you to recharge the batteries in your Pocket PC.



*Use the card for applications such as security identification and patient tracking.*

## FEATURES

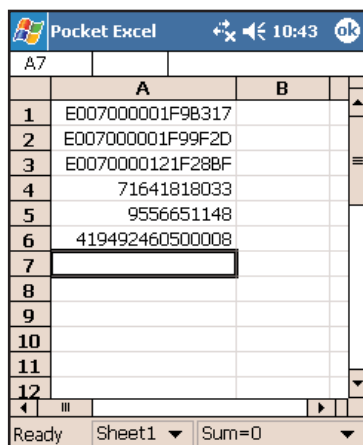
- Integrated Type II CF card and reader/scanner works in Type II CF slot of Pocket PCs
- High Frequency 13.56 MHz Reader/Writer
- Read range of about 2.5 inches (6.35 cm), depending on tag antenna size
- Reads all data from the most popular HF ISO15693 tags, such as ICode SLI/SL2, LRI512, my-d, Tag-It HF-I
- Reads all data from these proprietary HF tags: ICode 1, Tag-It HF, and PicoTag
- Reads multiple tag IDs simultaneously in Loop Mode
- Scans all commonly used linear bar codes
- Version 6M available with Class 1 laser for normal scanning conditions. Version 6P available with Class 2 laser for more demanding scanning applications
- Supported by the same SocketScan and SDK that supports all of Socket's bar code scanning products
- SocketScan software for Windows converts tag ID numbers into virtual keystrokes. Windows applications treat the data as if it were manually typed
- SocketScan lets you create prefixes and suffixes, such as Tab or Carriage Return, to further eliminate keystrokes during data collection
- This *Mobility Friendly* solution draws only a few milliamps of current in standby mode, extending the battery life of your Pocket PC
- No extra batteries or special power adapter required. The card gets power from the Pocket PC
- Works with Windows-based development tools, so you can easily create custom applications

# Socket

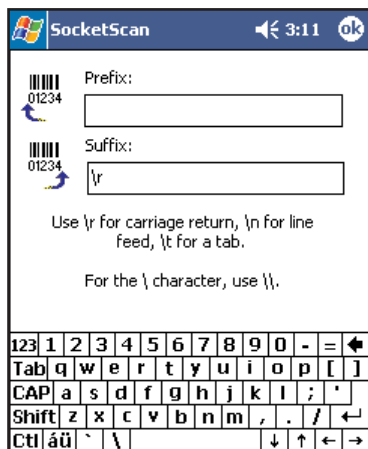
## CF RFID Reader-Scan Card

### Series 6

6M - Class 1 Laser SKU# RF5402-544  
6P - Class 2 Laser SKU# RF5405-632



SocketScan enters the tag ID or bar code data directly into any Windows program as if it were manually typed.



SocketScan lets you assign prefix and suffix characters to further eliminate manual keystrokes.

## SPECIFICATIONS:

### Physical Characteristics:

#### CompactFlash Card Size:

1.43 x 1.68 x 0.20 inches  
(36 x 42.7 x 5.0 mm)

#### Weight: 1.6 oz. (45 g)

#### Scanner Head Size:

1.76 x 1.93 x 0.82 inches  
(45 x 49 x 21 mm)

### Power Consumption (3.3 V):

Idle: 11 mA

RFID Reading/Writing: 52 mA

Scanning: 72 mA

Also operates at 5 V

### Environmental:

#### Operating Temperature:

-10 to +50°C (-4 to +122°F)

#### Storage Temperature:

-40 to +70°C (-40 to +158°F)

Humidity: 5-95% RH non-condensing

### Operating System Support:

Windows CE.NET v4.2 (Windows Mobile)

Compatibility: Windows COM port

### RFID Characteristics:

Frequency: 13.56 MHz (HF)

#### Maximum Read Range:

2.5 inches (6.35 cm), depending on tag antenna size

### HF RFID Tags Supported:

#### ISO15693:

ICODE SLI/SL2, LRI512, my-d, Tag-It HF-I

#### Proprietary:

ICODE 1, PicoTag, Tag-It HF

### Scanner Characteristics:

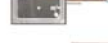
#### Laser Classes Available:

- Version 6M: Laser Class 1
- Version 6P: Laser Class 2

### Bar Codes



### RFID Tags



### Certification:

FCC: Part 15, Class B

CE: EN55024:1998

C-TICK: s.182

Warranty: 2 years

To learn more about RFID, please visit:

[www.socketcom.com/pdf/SocketandRFID.pdf](http://www.socketcom.com/pdf/SocketandRFID.pdf)

To learn more about Class 1 and Class 2 laser scanning, please visit:

[www.socketcom.com/pdf/TechBriefClass1Class2.pdf](http://www.socketcom.com/pdf/TechBriefClass1Class2.pdf)



## ADDITIONAL PRODUCT INFORMATION:

Website: [www.socketcom.com](http://www.socketcom.com)

### Sales Offices

### Corporate Headquarters

37400 Central Court  
Newark, CA 94560

Phone: 510-744-2700

Domestic Toll Free: 800-552-3300

Fax: 510-744-2727

Online: [www.socketcom.com/contact](http://www.socketcom.com/contact)

