

BLUETOOTH® SOUND REACTIVE RGB FIBER OPTIC CAR INTERIOR LIGHTING KIT

4pc Sound Reactive Multicolor LED lights with
Optical Fiber, Bluetooth App Control and Remote Control

Monster car fiber optical 4pk Operation Manual LT-1582 V1.0 1121

Introduction

These car interior LED accent lights are the perfect addition to light up any automobile interior. They require no hard wiring, simply connect the optical cable to each of the 4 lights, cut to your desired length, and then press the fibers into seams of the dashboard, doors, or seats to create the ideal lighting.

Features

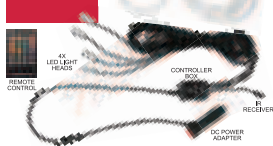
- Enhance your car interior with sleek and stylish fiber optic lights and dynamic, sound reactive lighting effects
- 2 x lights for front seat use with 72"1.8m cords + 2 x lights for back seat use with 144"3.6m cords
- 13.1ft4m of optical fiber and transparent tube, cuttable to desired length
- Easy DIY installation
- Control colors and flash modes with downloadable App or convenient IR remote control
- Powered with included 12V DC car adapter

What's Included

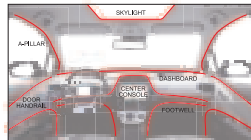
- 4pc Fiber Optic Lighting Kit with controller box and DC adapter
- 13.1ft4m Optical Fiber
- 13.1ft4m Transparent Installation Tube
- IR Remote Control (CR2025 Battery Included*)
- Controller Box Adhesive (optional)
- User Manual

⚠️ Avoid distracted driving - Do not adjust the color effects or installation of this product while driving

Installation



- Determine where you would like to install your lights, checking that the locations will be within reach of the wires to the LED light heads. Installation location ideas*:



1

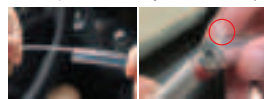
- Position the LED light heads in each location you would like to start a line of light. **Ensure that the wires for the lights do not interfere with steering wheel, doors, seatbelts, or any operation of the vehicle.** It is recommended to run the wires between seats in the center of the vehicle, under seat, and under floor mats where possible.

TIP: The light will travel brightly along the optical fiber for approximately 3.3ft/1m, longer if the fiber is kept in a straight line. Depending on your installation plan you may want to cut the fiber into 1m lengths and install on each light head, or you may find it better to light 2m lengths from both ends.



- Determine how you will install your lights. The optical fiber is designed to be inserted into the seams of the dashboard, doors, etc. without the need for adhesives or fasteners. The fiber can be installed directly or you can insert the fiber into the provided clear tubing for easier installation.

- Loosen the locking screw on the LED light head, insert the end of the optical fiber, and then tighten the screw securely.



2

- Once the fiber is attached to the LED heads, gently separate the panels of your dash or door and insert the fiber into the space between. When complete, cut the fiber and tube to fit.



NOTE: All vehicles are constructed differently. If you find that it is difficult to install the fiber in your vehicle you may want to use a tool to gently create space between the panels. Do not use any sharp or metallic tools as these could damage your vehicle or the fiber optic light kit.

- Plug the DC power adapter into your car's 12V DC power socket. Plug the other end of the DC adapter cord into the LED lighting controller box.



If desired, use the included adhesive tape to secure the controller box in place.

- To power on your LED lights, press the red power button on the end of DC adapter. The LED lights will illuminate.

NOTE: Most vehicles must be on to supply power to the 12V power socket.

4

Bluetooth® Setup

Before starting, check that your phone's Bluetooth and data connection are turned on.

- To download the Monster Smart App, scan the Android or iOS (Apple) QR code below with a QR code scanning app on your mobile device, or search for the Monster Smart app in the Apple or Google Play store. Download the App.



ANDROID

iOS

Monster Smart App supports iOS 10.0 or higher, and Android 4.4 or higher

- Press the red button on the DC power adapter to power on your LED lights, the button will illuminate red. Then press the button three times to enter pairing mode - the LED lights will begin flashing when it is ready to pair.
- Open the app and follow the instructions to add your lights. Look for the device name "Monster Fiber Optic Lights"
- Customize your LED lights with color and mode options, sound reactive music mode, and set schedules for lighting effects in the app.

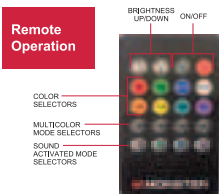
NOTE: After pairing successfully, the LED lights will automatically reconnect to the last paired device when powered on.

5



Operation Manual MODEL MLB7-2016 V1.0 1121

Remote Operation



- Press the red power button located on the DC plug, the LED power indicator will illuminate indicating there is power to the LED Accent Light.
- The battery for the remote control has already been installed. Before first use remove the clear battery insulating pull tab to operate.
- Turn on the LED Accent Light by pushing the ON button on the remote control.
- Select the desired color or the desired effect and push the corresponding button on the remote control. Set the desired color brightness using the buttons to increase/decrease the intensity of color.
- Push the OFF button to turn off the LED Accent Light.

NOTE: For best operation, point the IR remote towards the IR Receiver located on the LED lighting controller box.

6

Changing the remote control battery:

- The battery compartment is located on the narrow side of the remote control, press the release tab inwards and remove the tray
- Remove the empty battery and insert a 3V battery, type CR2025*, with the positive terminal pointing upwards
- Place the battery compartment back in the remote control so it locks in place

* The listed battery type may differ slightly from what is supplied. When replacing the battery, please verify the actual battery size in the remote control.

Coin / Button Cell Battery Cautions

- Keep batteries out of reach of small children or those that require supervision. Should a child, or someone, swallow a battery, consult a physician immediately.
- Install the battery with the correct polarity (+ and -)
- Dispose of batteries following your local regulations
- When discarding batteries, insulate the + and - terminals with a piece of insulating tape. When disposed of improperly, lithium batteries may short and pose a hazard.
- Keep batteries away from direct sunlight, high temperature, and high humidity

7

Safety Instructions

Please read and understand all instructions before using this product. If damage is caused by failure to follow the instructions, this warranty is null and void.

- Keep these instructions
- This product is not a toy. Keep out of reach of children.
- Do not drop, puncture, or attempt to disassemble this product
- Do not expose this product to dripping or splashing of drinks or liquids of any kind
- Avoid long exposure to direct sunlight, which may cause damage
- Do not expose this product to open flames
- Do not use this product in a strong magnetic field
- Do not use this unit for anything other than its intended user or purpose. Doing so may damage the device and void warranty.
- Use a clean, soft cloth to clean. Do not use any corrosive cleansers to clean
- This product is designed to be connected to a vehicle's 12V DC port only

⚠️ Avoid distracted driving - Do not adjust the color effects or installation of this product while driving

8

Customer Service

1 Year Limited Warranty
Scan QR code for warranty information

866-246-2008

customerservice@monsterilluminescence.com

In the event this product becomes defective, please do not return this product to your retailer.

Warning

Changes or modifications not expressly approved by the party responsible for compliance could void the user's warranty or authority to operate the equipment.

FCC Statement

This device complies with Part 15 of the FCC Rules. Operation is subject to the following two conditions: (1) this device may not cause harmful interference, and (2) this device must accept any interference received, including interference that may cause undesired operation.

FCC Radio Frequency Exposure Statement

The device has been evaluated to meet general RF exposure requirements. The device can be used in fixed or mobile condition. The minimum separation distance is 20cm.

The illustrated products and specifications may differ slightly from those supplied. The Monster logo is a registered trademark of Monster, Inc. in the U.S. and other countries and are used under license. All other brand names are trademarks of their respective owners. Vetteh Inc. Accessories, Inc. is affiliated with the respective owners of their trademarks. Licensed and Manufactured by Vetteh Inc. Accessories, Inc. South Plainfield, NJ 07080. Made in China.

Specifications

- Model: LT-1582
- FCC ID: 2AAPH-4-T-1582
- Voltage Supply: 12V
- Output: 1.5W
- remote control: 3V (1 x 3V battery, type CR2025*)

*The listed battery type may differ slightly from what is supplied. When replacing the battery, please verify the actual size in the remote control.

Need the Quick Start Guide in another language?

Besoin du guide de démarrage rapide dans une autre langue?

¿Necesita la guía de comienzo rápido en otro idioma?

Benötigen Sie die Schnellstartanleitung in einer anderen Sprache?

Serve la guida rapida in un'altra lingua?

Вам нужно Краткое руководство на другом языке?



www.monsterilluminescence.com/manuals/

This equipment has been tested and found to comply with the limits for a Class B digital device, pursuant to Part 15 of the FCC Rules. These limits are designed to provide reasonable protection against harmful interference in a residential installation. This equipment generates uses and can radiate radio frequency energy and, if not installed and used in accordance with the instructions, may cause harmful interference to radio communications. However, there is no guarantee that interference will not occur in a particular installation. If this equipment does cause harmful interference to radio or television reception, which can be determined by turning the equipment off and on, the user is encouraged to try to correct the interference by one or more of the following measures:

- Reorient or relocate the receiving antenna.
- Increase the separation between the equipment and receiver.
- Connect the equipment into an outlet on a circuit different from that to which the receiver is connected.
- Consult the dealer or an experienced radio/TV technician for help

This device complies with Part 15 of the FCC rules. Operation is subject to the following two conditions: 1) this device may not cause harmful interference, and 2) this device must accept any interference received, including interference that may cause undesired operation. Changes or modifications not expressly approved by the party responsible for compliance could void your authority to operate the equipment.

11