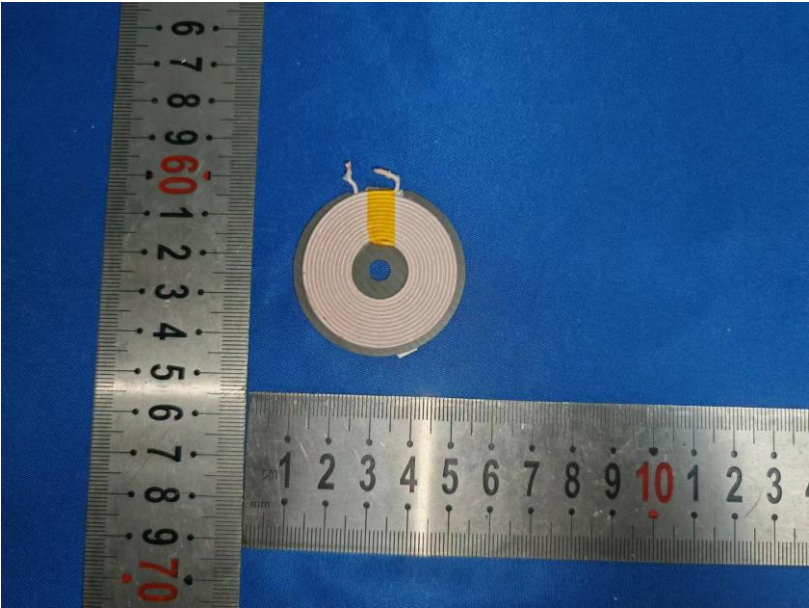


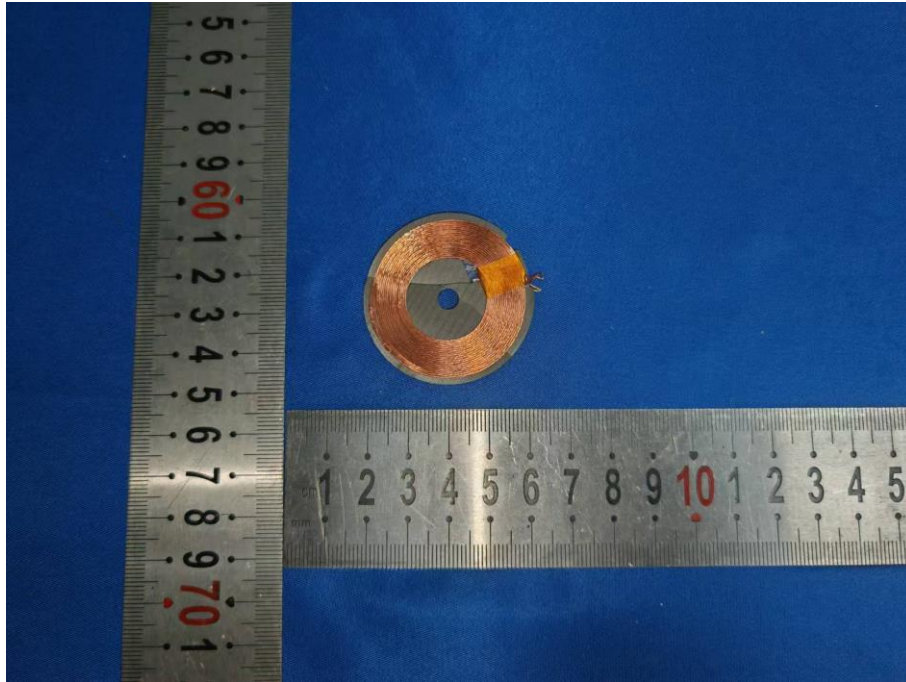
ANT PHTOT



L	W	H
38mm±0. 2	38mm±0. 2	0. 2mm±0. 1



L	W	H
20mm±0. 2	20mm±0. 2	0. 2mm±0. 1



L	W	H
38mm±0. 2	38mm±0. 2	0. 2mm±0. 1

All measurements were performed radiated and therefore additional antenna gain documentation is not required.