

250.00 mm

尺寸:250*210mm

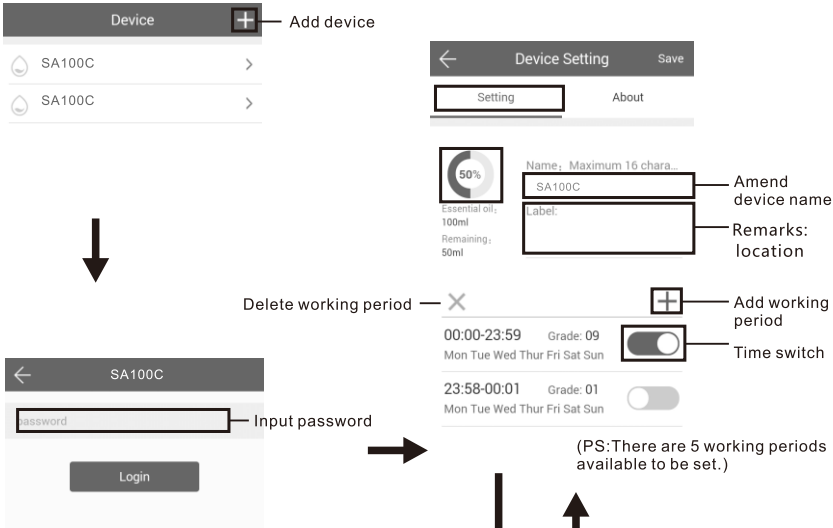
材质:铜版纸

Instructions

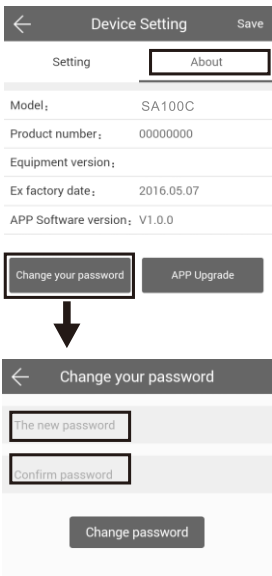
Where to get the app:
Please search "scent marketing" in Google play or App store and you will find it.



- Note:**
1. Please make sure that the Bluetooth function is turned on;
 2. Please make sure that the location function of the mobile phone is turned on.



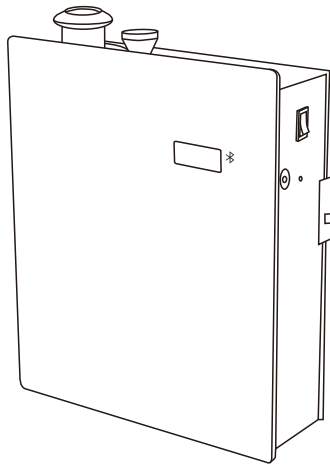
Amend password



If you forget the password, please press the reset button to restore the factory settings. The factory settings password is 8888.

PRODUCT MANUAL

SCENT MARKETING



Concentration and Consumption

Grade	Consume(ml/h)			Concentration	
	SA100C (150ml bottle)	SA250C (500ml bottle)	SA600C (1000ml bottle)	Working(s)	Stop(s)
G1	0.04	0.13	0.25	15s	300s
G2	0.07	0.25	0.50	15s	150s
G3	0.11	0.38	0.75	20s	120s
G4	0.15	0.51	1.00	20s	85s
G5	0.18	0.64	1.25	25s	80s
G6	0.22	0.76	1.50	30s	75s
G7	0.25	0.89	1.75	30s	60s
G8	0.29	1.02	2.00	30s	50s
G9	0.32	1.15	2.25	30s	40s
G10	0.36	1.27	2.50	30s	33s
G11	0.40	1.40	2.75	33s	30s
G12	0.44	1.53	3.00	40s	30s
G13	0.47	1.65	3.25	50s	30s
G14	0.51	1.78	3.50	60s	30s
G15	0.55	1.91	3.75	75s	30s
G16	0.58	2.04	4.00	80s	25s
G17	0.62	2.16	4.25	85s	20s
G18	0.65	2.29	4.50	120s	20s
G19	0.69	2.42	4.75	150s	15s
G20	0.72	2.54	5.00	300s	15s

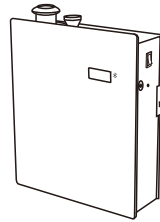
▲ up grade ▼ down grade

Note: 1. Above data is based on standard test oil.
2. Above data only for your reference, different oil may with different consumption.

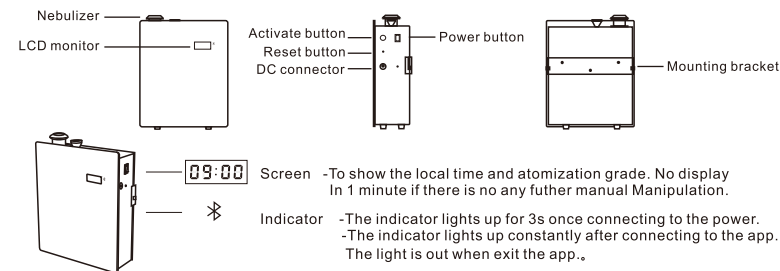
210.00 mm

SPECIFICATION

【 Model 】	SA100C/SA250C/SA600C
【 Size 】	180*210* 86.2 mm/200*280*85 mm/230*330*96mm
【 N.W. 】	2.1kg/3.6kg/4.7kg
【 Voltage 】	DC12V 1A/2A
【 Power 】	5W/8W/15W
【 Coverage 】	300m³ /1200m³ /2400m³
【 Capacity 】	150ml/480ml/1000ml

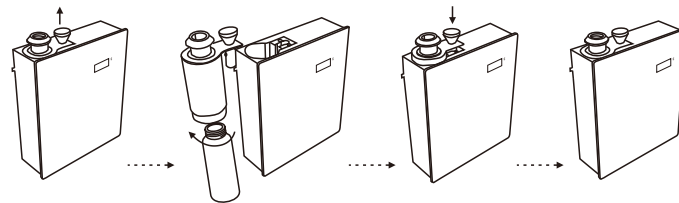


PTFE tape: 1. Tie up/ twine the atomized core when change a new one to machine.
2. Twine connector screwing to machine.



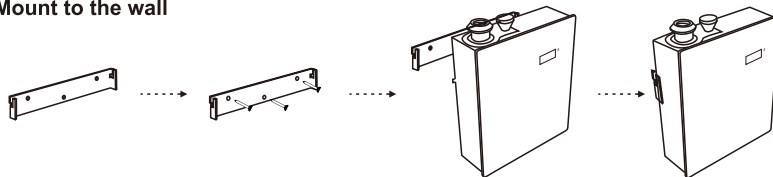
Installation

Bottle installation steps:



1. Pull out the bottle.
2. Unscrew the bottle and fill essential oil.
3. Insert the bottle.
4. Scent diffuser.

Mount to the wall

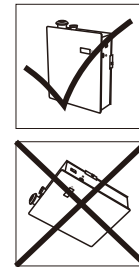


1. Choose a position.
2. Fasten the mounting bracket with nails.
3. Hang the machine.
4. Done.

NOTES

- ⚠ Shall not modify, disassemble or repair the machine if you're not a technician. Any failure happens, please contact relevant technician in time.
- ⚠ Avoiding get fire or electric shock, the power cord shall not be damaged, forced to be bended, yanked or under pressed by heavy objects, clipped or reprocessed.
- ⚠ Avoiding electric shock/ short out/ get fire any failures:
 - Shall not use the AC plug when it is damaged or un-matched with the socket;
 - Shall not wet the machine or the AC plug;
 - Shall not use overladen power socket, wire or broken plug.
- ⚠ Avoiding electric shock, shall not touch the wire or product shell when thundering or/and lightning.
- ⚠ Avoiding any abnormal conditions and damages, shall not disassemble the machine during operating.

1. After installation, please keep the machine vertical. Tilt or lie flatly may cause oil overflow. The machine efficiency may be affected if the circuit board is contaminated.
2. Shall not modify, disassemble or repair the machine arbitrarily. Any failure happens, please contact relevant technician in time.
3. When the machine is out of the working period, the display is still on but the machine stops working.
4. It is invalid to touch/tap button when machine is under lock status. No light or display on the screen.
5. If the screen displays messy, programs crash, please reset the machine by touch "ENT" button about 5 seconds till a short "beep" noise comes out.



TROUBLESHOOTING

Before asking to have the machine repaired, please try to diagnose the problem first following to bellow instructions.

Symptom	Remedy
Does not diffuse	-Check the power is on or off ; -If the machine is in "not working period", it stops diffuse; -The pump is damaged, change a new one.
Spray little	-Atomized nozzle may be blocked, diffuse with alcohol to do cleaning ; -Pump is aging, change a new one.
Spray liquid	-Atomized nozzle is damaged, change a new one; -Machine is tilted or lay flat, please make it stand onend.
Oil spill	-Bottle is loose, screw it to the right place.
Abnormal sound	-Pump is loose, install it correctly.
No display on screen	-The power is off; -Plugs is damaged, change a new plug ; -Display screen is damaged, change a new one.

EQUIPMENT CLEANING

The machine needs to be cleaned when below situations happen:

1. You're about to change to another essential oil;
2. The atomization volume becomes weak .

Cleaning steps:

1. Find a clean bottle and fill it with industrial alcohol.
2. Install this bottle to the machine and turn the machine on. Let it work for 5-10 minutes.
3. Turn off the electric, finish the cleaning.

FCC Warning

This device complies with Part 15 of the FCC Rules. Operation is subject to the following two conditions:

(1) This device may not cause harmful interference, and (2) this device must accept any interference received, including interference that may cause undesired operation.

NOTE 1: This equipment has been tested and found to comply with the limits for a Class B digital device, pursuant to part 15 of the FCC Rules. These limits are designed to provide reasonable protection against harmful interference in a residential installation. This equipment generates, uses and can radiate radio frequency energy and, if not installed and used in accordance with the instructions, may cause harmful interference to radio communications. However, there is no guarantee that interference will not occur in a particular installation. If this equipment does cause harmful interference to radio or television reception, which can be determined by turning the equipment off and on, the user is encouraged to try to correct the interference by one or more of the following measures:

- Reorient or relocate the receiving antenna.
- Increase the separation between the equipment and receiver.
- Connect the equipment into an outlet on a circuit different from that to which the receiver is connected.
- Consult the dealer or an experienced radio/TV technician for help.

NOTE 2: Any changes or modifications to this unit not expressly approved by the party responsible for compliance could void the user's authority to operate the equipment.

The device has been evaluated to meet general RF exposure requirement. The device can be used in portable exposure condition without restriction.