

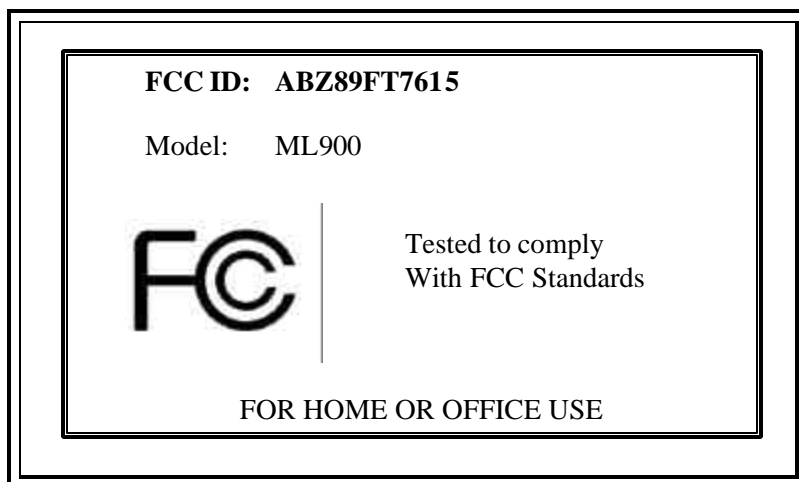
## **EXHIBIT B – Labeling Requirements**



### **Sample Label & Location**

New Labeling Requirements

Per 2.1074 & 15.19; Docket 95-19

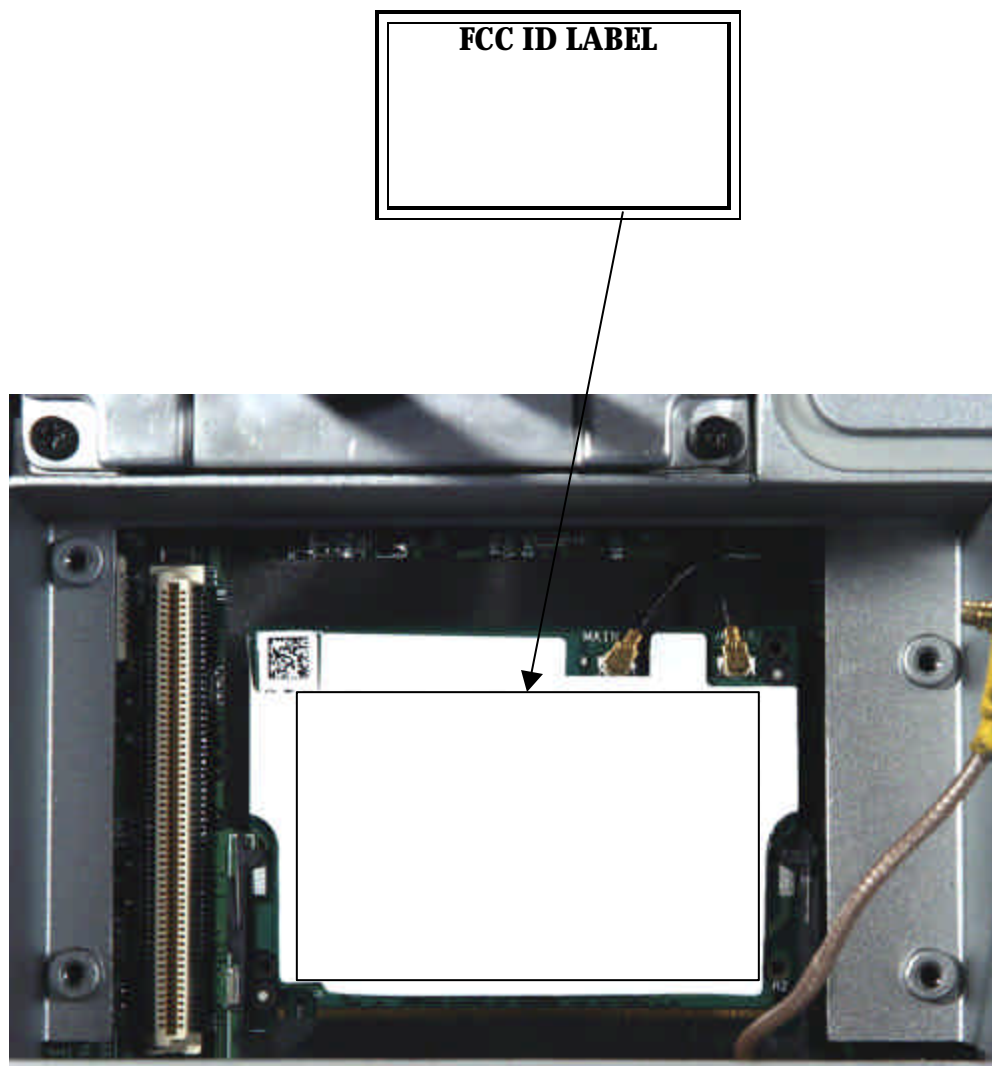
The sample label shown below shall be permanently affixed at a conspicuous location on the device; instruction manual or pamphlet supplied to the user and be readily visible to the purchaser at the time of purchase. However, when the device is so small wherein placement of the label with specified statement is not practical, only the trade name, FCC ID, and the FCC logo must be displayed on the device per Section 15.19 (b)(2).





PCTEST LAB TEST REPORT 15.407		<b>FCC CERTIFICATION REPORT</b>			Reviewed by: Quality Manager
Filename: 0603010127	Test Dates: March 6-10, 2006	EUT Type: Motorola A/B/G Wireless LAN Module for ML900 Series	FCC ID: ABZ89FT7615	Page 22 of 28	

## **EXHIBIT B – Labeling Requirements (Cont.)**

### **Sample Label & Location**



<b>PCTEST</b> LAB TEST REPORT 15.407		<b>FCC CERTIFICATION REPORT</b>		Reviewed by: Quality Manager
<b>Filename:</b> 0603010127	<b>Test Dates:</b> March 6-10, 2006	<b>EUT Type:</b> Motorola A/B/G Wireless LAN Module for ML900 Series	<b>FCC ID:</b> ABZ89FT7615	Page 23 of 28