

## W-CDMA Band II

Frequency: 1880 MHz; Duty Cycle: 1:1; Room Ambient Temperature: 24.0°C; Liquid Temperature: 23.0°C

Medium parameters used:  $f = 1880$  MHz;  $\sigma = 1.535$  S/m;  $\epsilon_r = 51.456$ ;  $\rho = 1000$  kg/m<sup>3</sup>

DASY5 Configuration:

- Area Scan Setting: Find Secondary Maximum Within: 2.0 dB and with a peak SAR value greater than 0.0012W/kg
- Electronics: DAE4 Sn1434; Calibrated: 4/16/2015
- Probe: EX3DV4 - SN3773; ConvF(6.96, 6.96, 6.96); Calibrated: 4/22/2015;
- Sensor-Surface: 2.5mm (Mechanical Surface Detection)
- Phantom: ELI v5.0 (A); Type: QDOVA001BB; Serial: 1213

**Rear/RMC Rel. 99 Ch 9400/Area Scan (8x10x1):** Measurement grid: dx=15mm, dy=15mm

Maximum value of SAR (measured) = 0.486 W/kg

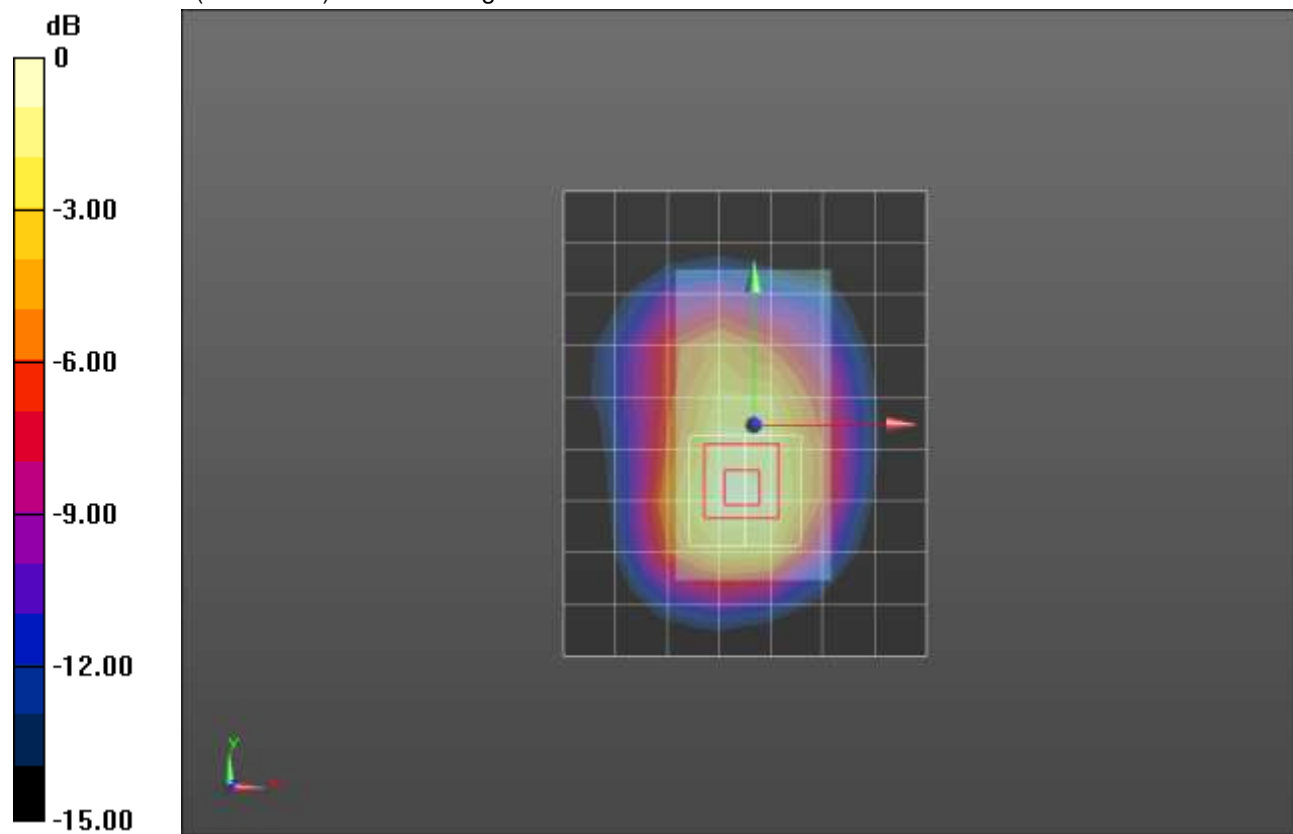
**Rear/RMC Rel. 99 Ch 9400/Zoom Scan (5x5x7)/Cube 0:** Measurement grid: dx=8mm, dy=8mm, dz=5mm

Reference Value = 18.11 V/m; Power Drift = -0.02 dB

Peak SAR (extrapolated) = 0.672 W/kg

**SAR(1 g) = 0.444 W/kg; SAR(10 g) = 0.272 W/kg**

Maximum value of SAR (measured) = 0.544 W/kg



0 dB = 0.544 W/kg = -2.64 dBW/kg

## W-CDMA Band II

Frequency: 1880 MHz; Duty Cycle: 1:1; Room Ambient Temperature: 24.0°C; Liquid Temperature: 23.0°C

Medium parameters used:  $f = 1880$  MHz;  $\sigma = 1.416$  S/m;  $\epsilon_r = 39.316$ ;  $\rho = 1000$  kg/m<sup>3</sup>

DASY5 Configuration:

- Area Scan Setting: Find Secondary Maximum Within: 2.0 dB and with a peak SAR value greater than 0.0012W/kg
- Electronics: DAE4 Sn1360; Calibrated: 3/12/2015
- Probe: EX3DV4 - SN3751; ConvF(7.14, 7.14, 7.14); Calibrated: 11/14/2014;
- Sensor-Surface: 2.5mm (Mechanical Surface Detection (Locations From Previous Scan Used)), Sensor-Surface: 2.5mm (Mechanical Surface Detection)
- Phantom: SAM; Type: QD000PCD; Serial: 1632

**Next-to-Mouth/RMC Rel. 99 Ch 9400/Area Scan (8x10x1):** Measurement grid: dx=15mm, dy=15mm

Maximum value of SAR (measured) = 0.262 W/kg

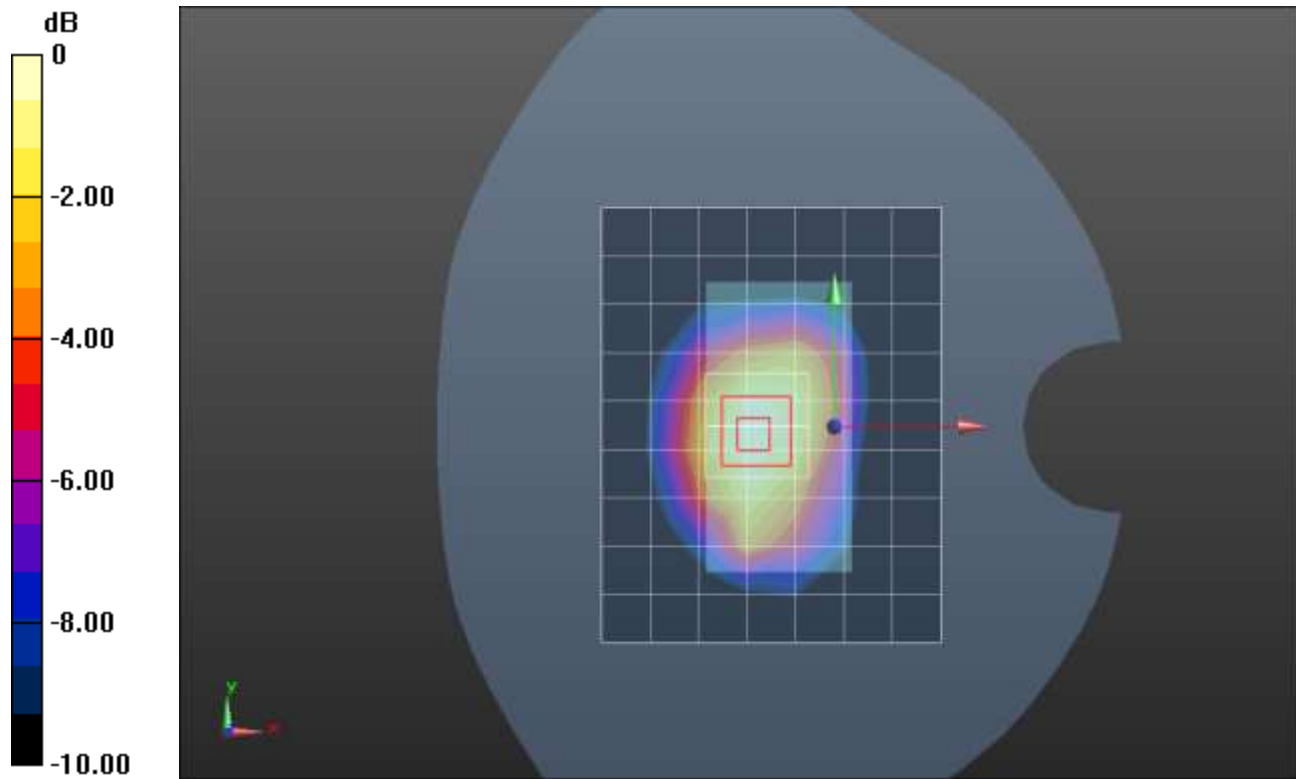
**Next-to-Mouth/RMC Rel. 99 Ch 9400/Zoom Scan (5x5x7)/Cube 0:** Measurement grid: dx=8mm, dy=8mm, dz=5mm

Reference Value = 13.707 V/m; Power Drift = 0.01 dB

Peak SAR (extrapolated) = 0.332 W/kg

**SAR(1 g) = 0.219 W/kg; SAR(10 g) = 0.138 W/kg**

Maximum value of SAR (measured) = 0.264 W/kg



0 dB = 0.264 W/kg = -5.78 dBW/kg

## W-CDMA Band V

Frequency: 826.4 MHz; Duty Cycle: 1:1; Room Ambient Temperature: 24.0°C; Liquid Temperature: 23.0°C

Medium parameters used (interpolated):  $f = 826.4$  MHz;  $\sigma = 0.997$  S/m;  $\epsilon_r = 53.299$ ;  $\rho = 1000$  kg/m<sup>3</sup>

DASY5 Configuration:

- Area Scan Setting: Find Secondary Maximum Within: 2.0 dB and with a peak SAR value greater than 0.0012W/kg
- Electronics: DAE4 Sn1434; Calibrated: 4/16/2015
- Probe: EX3DV4 - SN3773; ConvF(8.26, 8.26, 8.26); Calibrated: 4/22/2015;
- Sensor-Surface: 2.5mm (Mechanical Surface Detection)
- Phantom: ELI-B v5.0; Type: QDOVA001BB; Serial: 1215

**Front/RMC Rel. 99 Ch 4132/Area Scan (8x10x1):** Measurement grid: dx=15mm, dy=15mm

[Info: Interpolated medium parameters used for SAR evaluation.](#)

Maximum value of SAR (measured) = 1.15 W/kg

**Front/RMC Rel. 99 Ch 4132/Zoom Scan (6x6x7)/Cube 0:** Measurement grid: dx=8mm, dy=8mm, dz=5mm

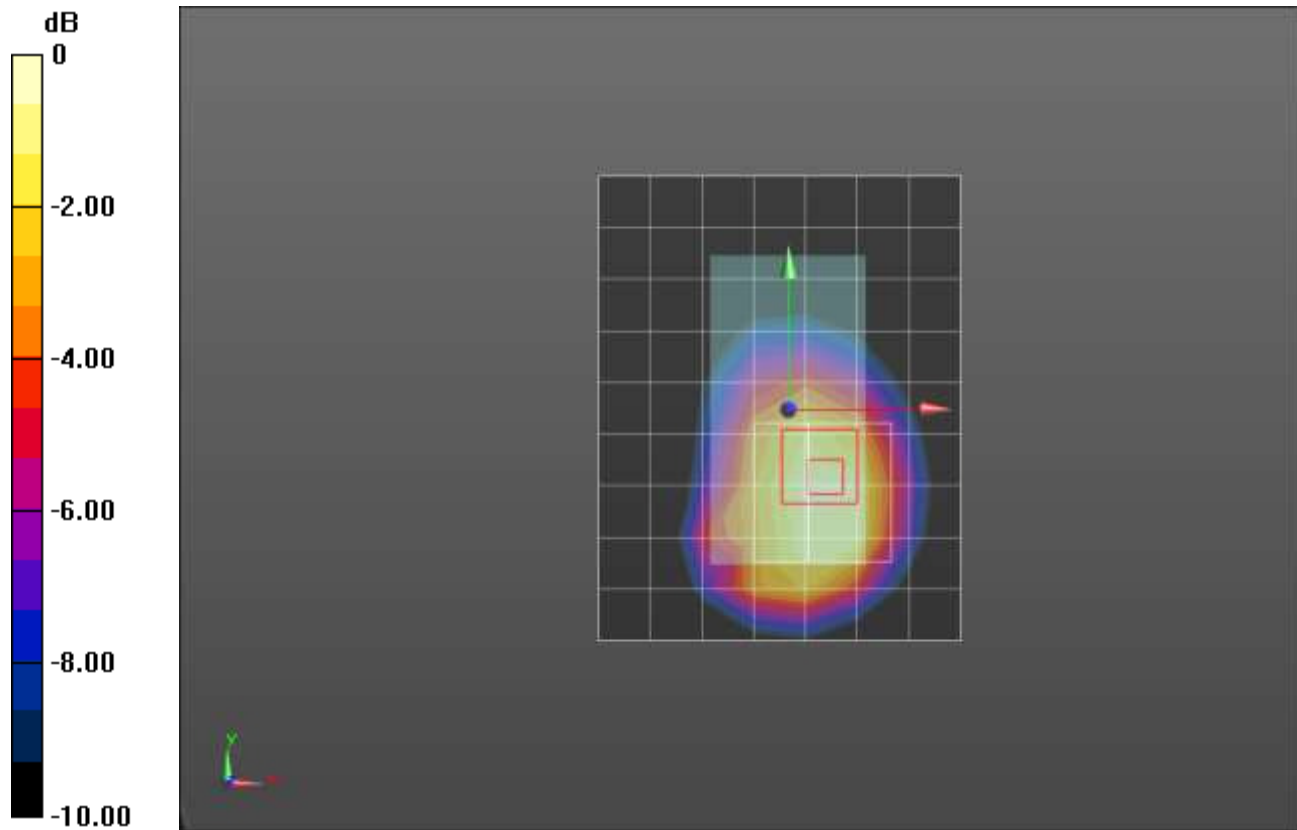
Reference Value = 34.17 V/m; Power Drift = -0.17 dB

Peak SAR (extrapolated) = 1.80 W/kg

**SAR(1 g) = 0.986 W/kg; SAR(10 g) = 0.618 W/kg**

[Info: Interpolated medium parameters used for SAR evaluation.](#)

Maximum value of SAR (measured) = 1.27 W/kg



0 dB = 1.27 W/kg = 1.04 dBW/kg

## W-CDMA Band V

Frequency: 836.6 MHz; Duty Cycle: 1:1; Room Ambient Temperature: 24.0°C; Liquid Temperature: 23.0°C

Medium parameters used (interpolated):  $f = 836.6$  MHz;  $\sigma = 0.9$  S/m;  $\epsilon_r = 40.397$ ;  $\rho = 1000$  kg/m<sup>3</sup>

DASY5 Configuration:

- Area Scan Setting: Find Secondary Maximum Within: 2.0 dB and with a peak SAR value greater than 0.0012W/kg
- Electronics: DAE4 Sn1357; Calibrated: 2/20/2015
- Probe: EX3DV4 - SN3901; ConvF(9.59, 9.59, 9.59); Calibrated: 1/27/2015;
- Sensor-Surface: 2.5mm (Mechanical Surface Detection)
- Phantom: SAM v5.0 (A); Type: QD000P40CD; Serial: 1602

**Front/RMC Rel. 99 Ch 4183 10mm/Area Scan (8x10x1):** Measurement grid: dx=15mm, dy=15mm

[Info: Interpolated medium parameters used for SAR evaluation.](#)

Maximum value of SAR (measured) = 0.389 W/kg

**Front/RMC Rel. 99 Ch 4183 10mm/Zoom Scan (5x5x7)/Cube 0:** Measurement grid: dx=8mm, dy=8mm, dz=5mm

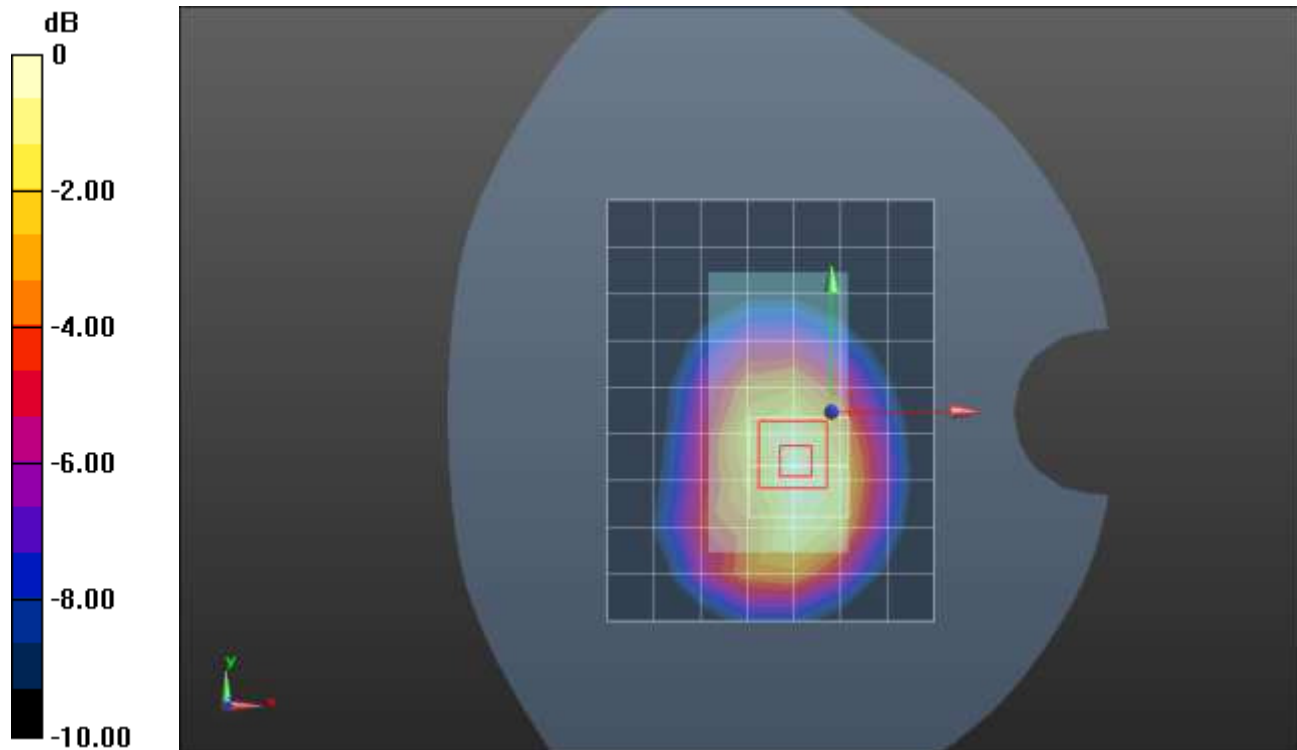
Reference Value = 21.28 V/m; Power Drift = 0.03 dB

Peak SAR (extrapolated) = 0.509 W/kg

**SAR(1 g) = 0.341 W/kg; SAR(10 g) = 0.223 W/kg**

[Info: Interpolated medium parameters used for SAR evaluation.](#)

Maximum value of SAR (measured) = 0.415 W/kg



0 dB = 0.415 W/kg = -3.82 dBW/kg